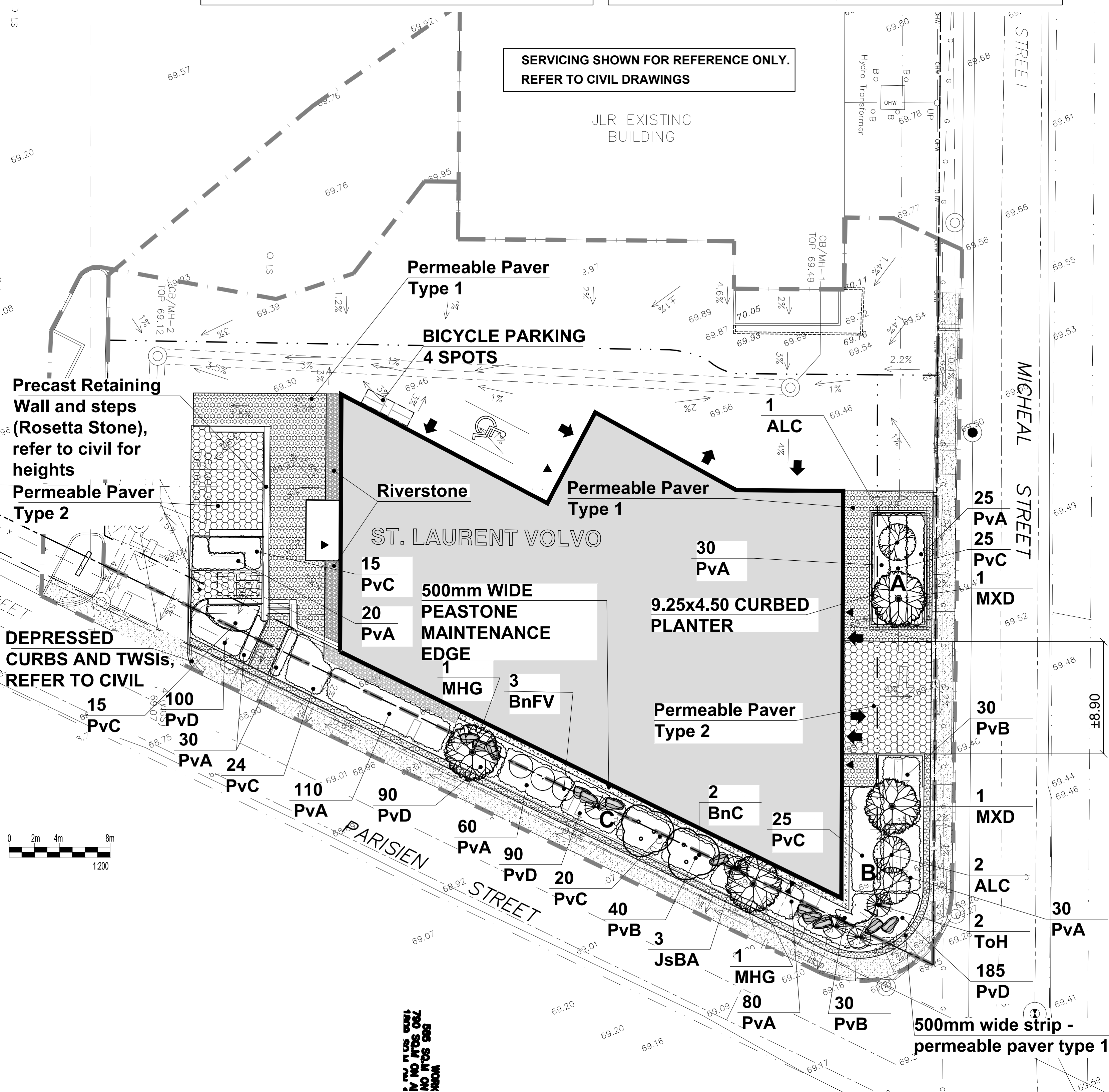


THIS PLAN IS ISSUED FOR SITE PLAN CONTROL ONLY. ADDITIONAL DETAILING AND SPECIFICATIONS ARE REQUIRED PRIOR TO TENDERING AND CONSTRUCTION.

PLAN TO BE READ IN CONJUNCTION WITH 'TREE CONSERVATION REPORT FOR 1300 MICHAEL STREET, OTTAWA' JANUARY 6, 2022 BY Andrew K. Boyd IFS ASSOCIATES.



| 1300 Michael | | | | |
|--|---------------|---|--------------------|--------------------------|
| Soil Volume Area, Tree Quantity and Size | Tree Quantity | OTTAWA Target Soil Volume (m ³) | Design Soil Volume | Soil Adequacy percentage |
| AREA A- 2 Ornamental trees | | | | |
| plant bed (31.6 sq m x 0.6 metre deep) | 2 | 18.0 | 19.0 | 105.33% |
| AREA B- 3 Ornamental trees, 2 columnar junipers/cedars* | | | | |
| plant bed (65 sq m x 0.45 metre deep) | 5 | 29.1 | 29.3 | 100.52% |
| AREA C - 4 Ornamental trees, 3 small ornamental trees,* 3 columnar junipers/cedars* | | | | |
| plant bed (114 sq m x 0.45 metre deep) | 10 | 49.7 | 51.3 | 103.32% |

* Small ornamental trees with growth to 8-15cm DBH, columnar conifers calculated using 'How much soil to grow a big tree' by DeepRoot as a guide

| Plant List | ID | Qty | Botanical Name | Common Name | Scheduled Size | Remarks |
|-----------------------------|-----|-----------------------------------|--------------------------------|---------------|----------------|---------|
| Trees | | | | | | |
| ALC | 3 | Amelanchier Laevis 'Cumulus' | Cumulus Allegheny Serviceberry | 50mm cal. | WB, Staked | |
| BnC | 2 | Betula nigra Clump | River Birch | 50mm cal. | WB, Staked | |
| MHG | 2 | Malus x 'Harvest Gold' | Harvest Gold Crabapple | 50mm cal. | WB, Staked | |
| MXD | | Malus X Dreamweaver | Dreamweaver Columnar Crabapple | 50mm cal. | WB, Staked | |
| Small trees / Shrubs | | | | | | |
| BnFV | 3 | Betula nigra 'Fox Valley' | Fox Valley River Birch | 125cm ht. | Potted | |
| JsBA | 3 | Juniperus scopulorum 'Blue Arrow' | Blue Arrow Juniper | 100 cm ht. | Potted | |
| ToH | 2 | Thuja occidentalis 'Holmstrup' | Holmstrup Cedar | 120cm ht. | B&B / Potted | |
| Perennials | | | | | | |
| PvA | 385 | Flowering perennials | | 150mm Pot | 50cm o.c. | |
| PvB | 100 | Flowering perennials | | 150mm Pot | 60cm o.c. | |
| PvC | 124 | Ornamental Grasses | | 150mm Pot | 70cm o.c. | |
| PvD | 470 | Ground Cover Perennials | | Plugs / Flats | 35cm o.c. | |

CONTRACTOR TO REPORT ANY DISCREPANCIES FOUND BETWEEN PLAN & PLANT LIST PRIOR TO PLANTING

Perennial types (invasive species such as Miscanthus are not to be planted)

PvA: Low to mid Flowering perennials up to 60cm ht (minimum 5 species mix): Cranesbill Geranium, Low Meadow Sage, Coral Bells, Dianthus, Phlox, Daylilies, Rudbeckia.

PvB: Tall Flowering Perennials (minimum 7 species mix): Shasta Daisy, Coneflower, Veronica, Tall Meadow and Russian Sage, Tall Phlox, Rudbeckia, Ostrich Fern, Joe Pye Weed, Turtlehead.

PvC: Ornamental Grasses (groupings): Feather Reed Grass, Switch Grass, Tufted Hairgrass

PvD: Ground Cover Perennials: varieties of Thyme, Stonecrop, low Sedum

LEGEND

- PROPOSED PLANTING
- PROPOSED PEASTONE MAINTENANCE EDGE
- PROPOSED RIVERSTONE
- PROPOSED STANDARD PAVERS
- PROPOSED PERMEABLE PAVER TYPE 1
- PROPOSED PERMEABLE PAVER TYPE 2
- A B C** SOIL VOLUME AREAS ID

GENERAL NOTES

- All general site information and conditions compiled from existing plans, surveys and consultant's field notes. Report all discrepancies prior to any work. No responsibility is born by the Consultant for unknown subsurface conditions.
- The location of the utilities is approximate only, and the exact location should be determined by consulting the municipal authorities and utility companies concerned. The Contractor shall prove the location of utilities and shall be responsible for adequate protection from damage.
- All dimensions shown are to be verified on site prior to any construction. No deviations are to be made from the layouts as shown on this plan without prior consultation with the Landscape Architect and Owner.
- No other trees to be removed without prior approval by Landscape Architect.

| No. | ISSUE | DATE |
|-----|---------------------------------|------------|
| 7 | | |
| 6 | | |
| 5 | | |
| 4 | | |
| 3 | Site Plan Control re-submission | Dec. 20/22 |
| 2 | Site Plan Control re-submission | Jul. 26/22 |
| 1 | Site Plan Control submission | Jan. 12/22 |

SCALE: AS SHOWN

brian k. clark
ARCHITECT

141 Catherine Street, Suite 102
Ottawa, Ontario K2P 1C3
TEL: (613) 238-7412 • FAX: 238-1799
Email: bkclarkarchitect@on.aibn.com

Ruhland & Associates Ltd

200-1750 Courtwood Crescent, Ottawa, Ontario K3C 2B5
P: (613) 224-4744 x 232 F: (613) 224-6131 info@ruhl.ca www.ruhl.ca

PROJECT NORTH:

PROFESSIONAL STAMP:

PROFESSIONAL STAMP:

PROFESSIONAL STAMP:

PROJECT: **VOLVO ST. LAURENT 1328 MICHAEL STREET OTTAWA, ONTARIO**

DRAWING: **LANDSCAPE PLAN**

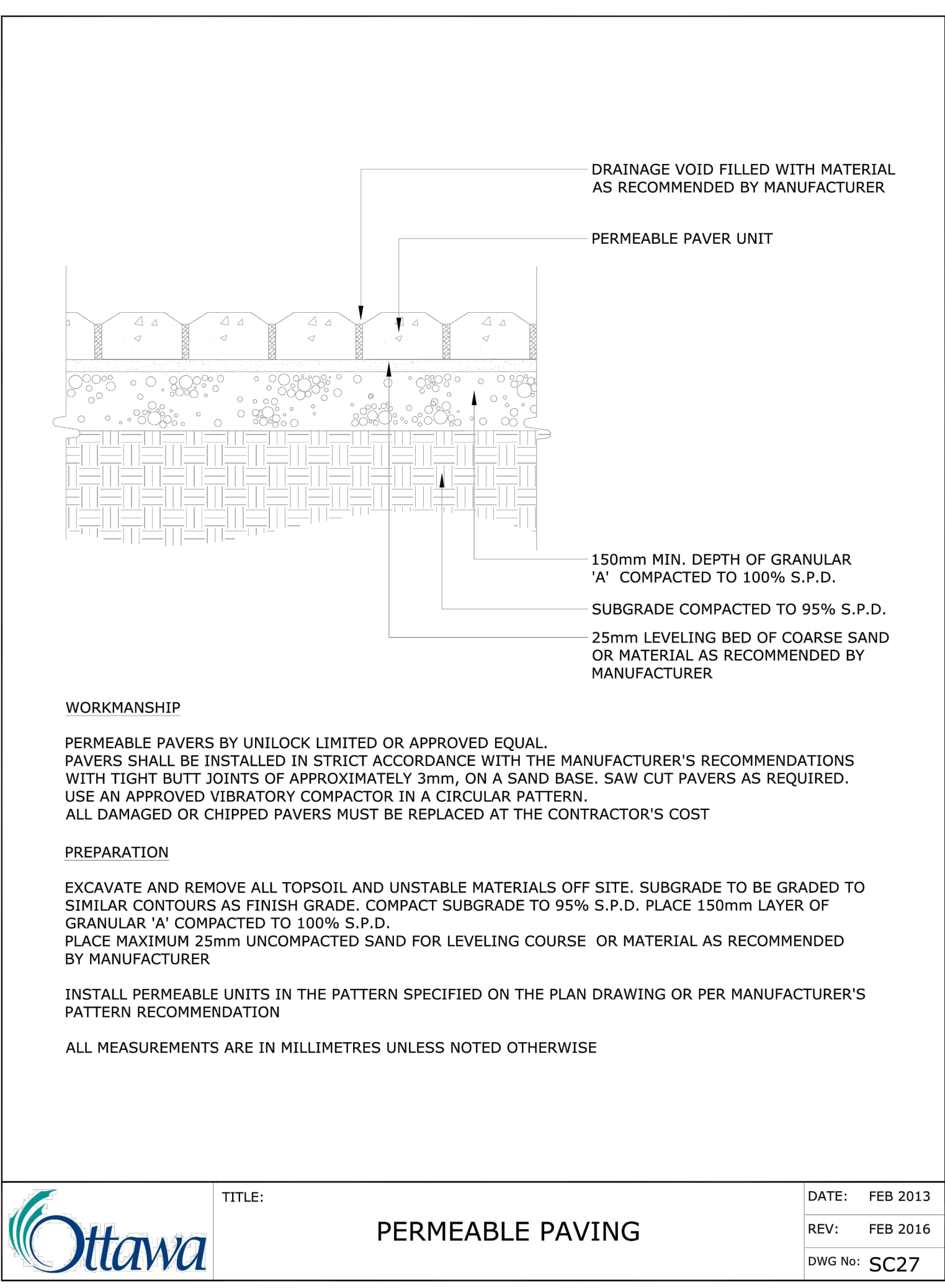
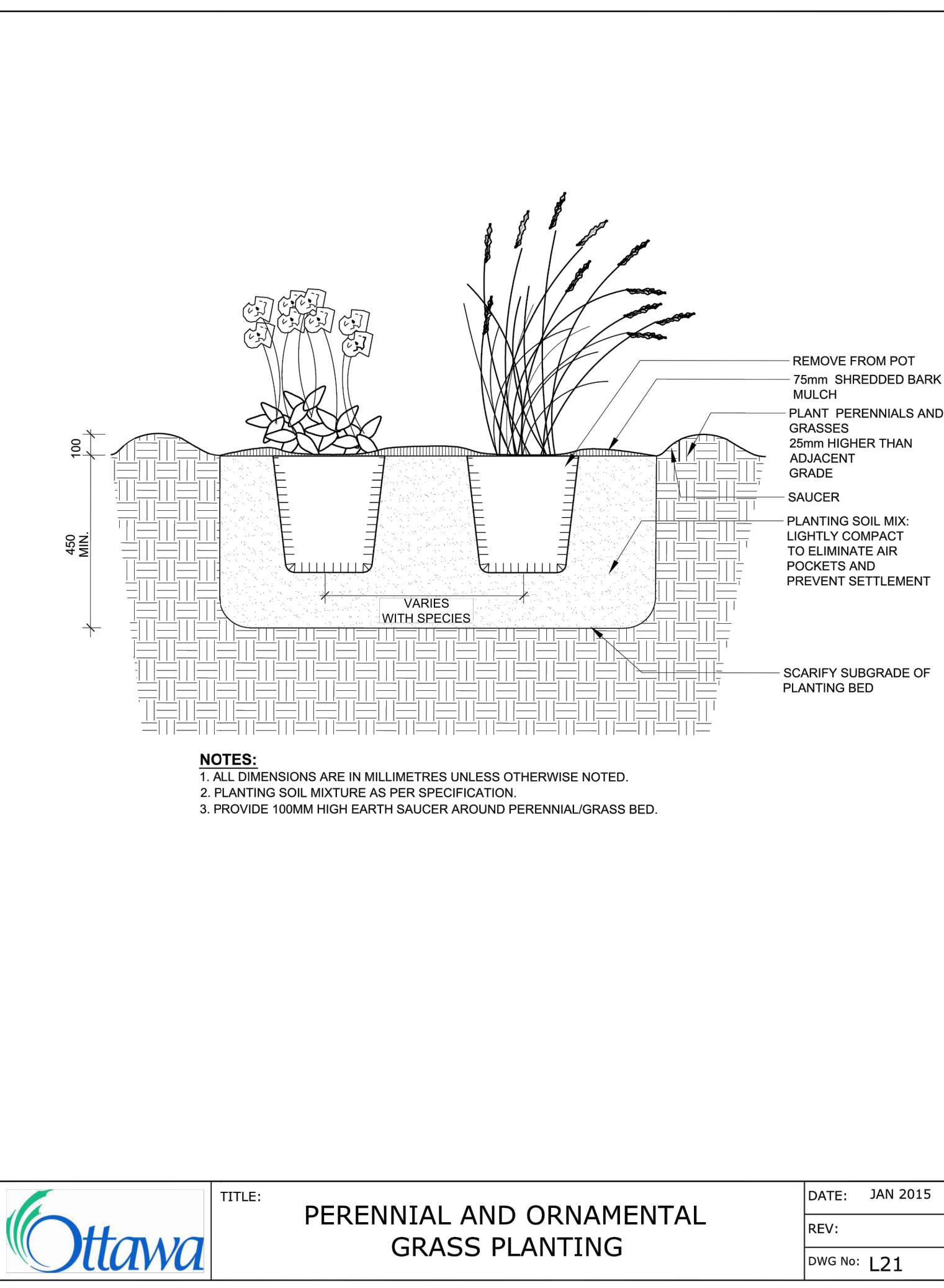
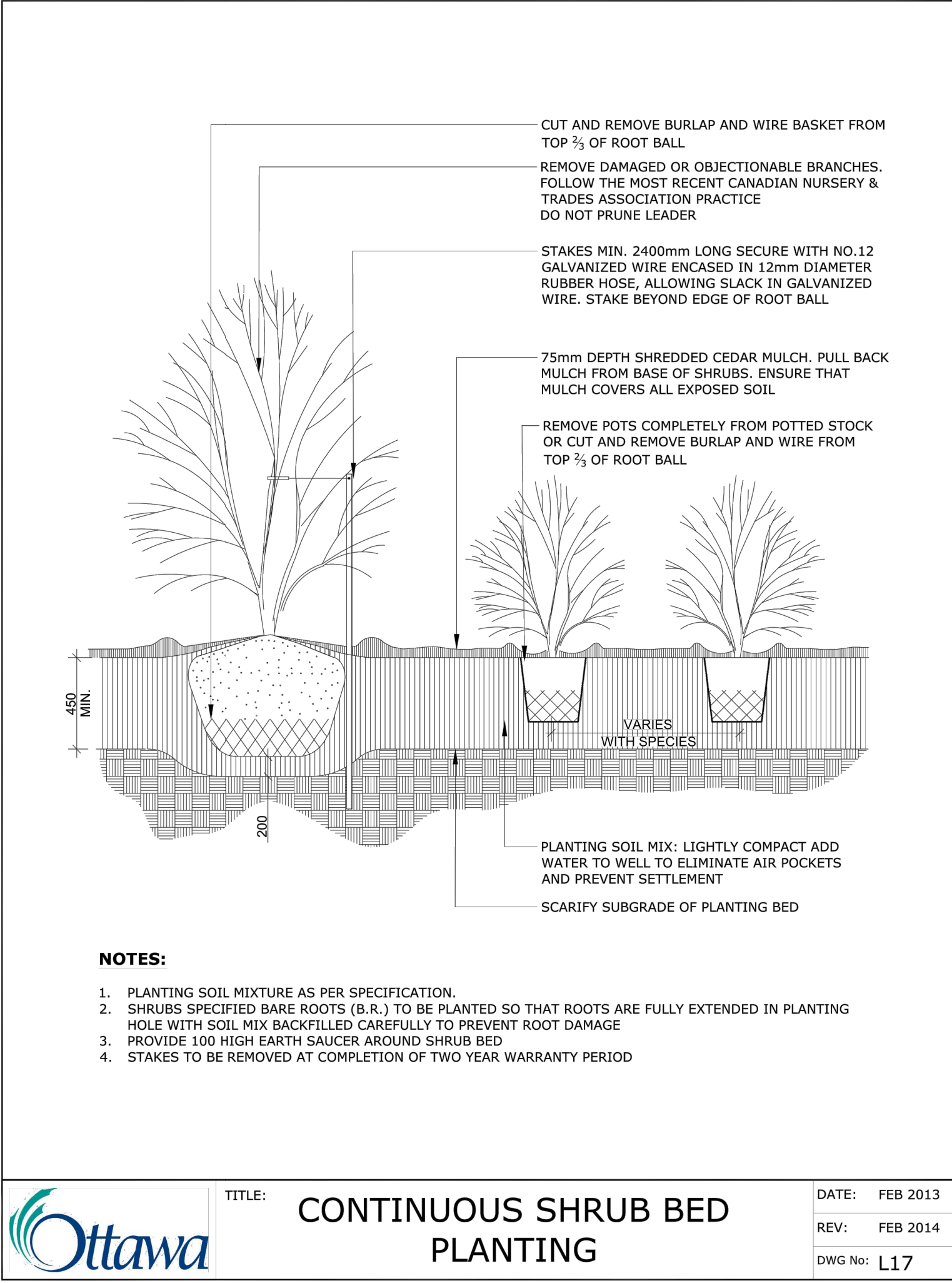
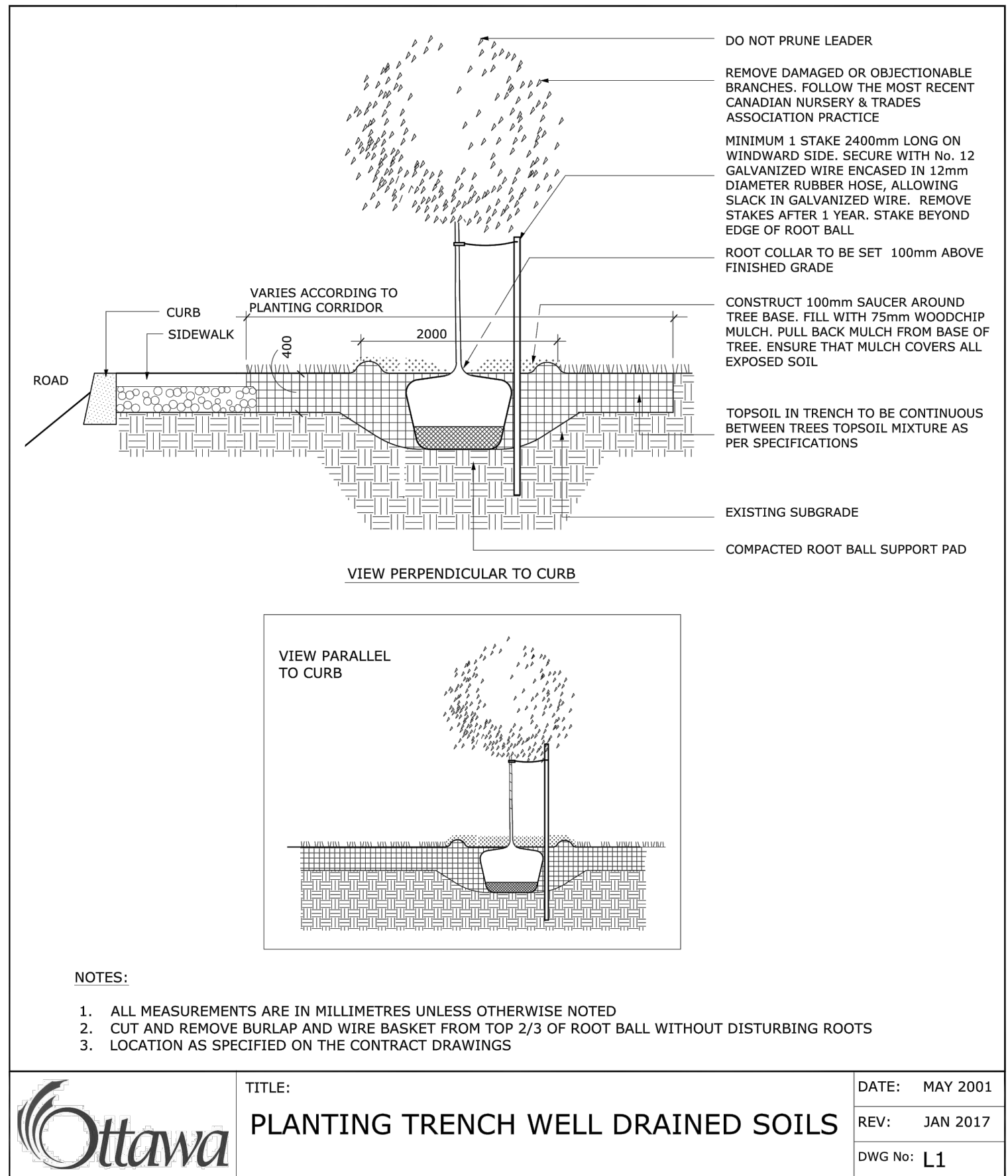
| | |
|---------------|-------------------------|
| DESIGN: M.R. | DRAWING NO: L-01 |
| DRAWN: M.M. | G-C NO: |
| CHECKED: M.R. | |
| PLOTTED: | |

File Location: C:\Users\Marina Makov\Documents\Projects_P\COMMERCIAL\2021\Volvo Dealership Addition\RA\SPC_TCR_21-1835_Volvo Saint Laurent Addition_2022.12.20.dwg Last Saved: December 13, 2021 Plotted: December 13, 2021

D07-12-22-0012

TREE SOIL VOLUME REQUIREMENTS:

- STANDARD TREE SOIL VOLUMES QUANTITIES INCLUDE THE TOP 900-1000mm OF SOIL/EXISTING SUBSOIL LAYER TO CALCULATE TOTAL SOIL VOLUMES REQUIRED BY CITY OF OTTAWA FOR SUSTAINABLE TREE GROWTH. WHERE LARGER SOFT AREAS ARE AVAILABLE, THE TOP 400-500mm LAYER IS USED TO CALCULATE SOIL VOLUMES.
- WHERE EXISTING MATERIAL BELOW THE SPECIFIED TOPSOIL IS NOT CONDUVIVE TO TREE GROWTH, AN ADDITIONAL LAYER OF PLANTING MEDIUM IS TO BE INSTALLED BELOW SPECIFIED TOPSOIL DEPTH TO OBTAIN 900-1000mm SOIL VOLUME DEPTH REQUIRED.
- REFER TO SOIL VOLUME CHART AND PLANS FOR AREA WHERE TREE SOIL VOLUMES ARE REQUIRED.



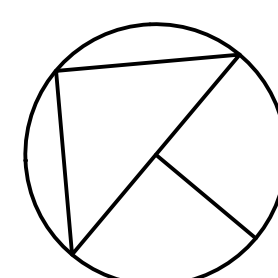
BASES FOR PERMEABLE PAVERS IN PEDESTRIAN AND VEHICULAR AREAS TO BE ADJUSTED TO SITE CONDITIONS AND AS PER GEOTECHNICAL RECOMMENDATIONS FOR PAVEMENT STRUCTURES AND PERMEABILITY REQUIREMENTS.

| | | |
|-----|---------------------------------|------------|
| 7 | | |
| 6 | | |
| 5 | | |
| 4 | | |
| 3 | Site Plan Control re-submission | Dec. 20/22 |
| 2 | Site Plan Control re-submission | Jul. 26/22 |
| 1 | Site Plan Control submission | Jan. 12/22 |
| No. | ISSUE | DATE |

SCALE: AS SHOWN

brian k. clark
A.R.C.H.I.T.E.C.T
 141 Catherine Street, Suite 102
 Ottawa, Ontario K2P 1C3
 TEL • (613) 238-7412 • FAX • 238-1799
 Email • bkclarkarchitect@on.aibn.com

Ruhland & Associates Ltd
 200-1750 Courtwood Crescent, Ottawa, Ontario K3C 2B5
 P (613) 224-4744 x 232 F (613) 224-1131 info@rnl.ca www.rnl.ca

PROJECT NORTH: 

PROFESSIONAL STAMP:

PROFESSIONAL STAMP:

PROFESSIONAL STAMP:

PROJECT: **VOLVO ST. LAURENT
 1328 MICHAEL STREET
 OTTAWA, ONTARIO**

DRAWING: **LANDSCAPE DETAILS**

DESIGN: M.R.
 DRAWN: M.M.
 CHECKED: M.R.
 PLOTTED:

DRAWING NO: **L-02**
 G-C NO: