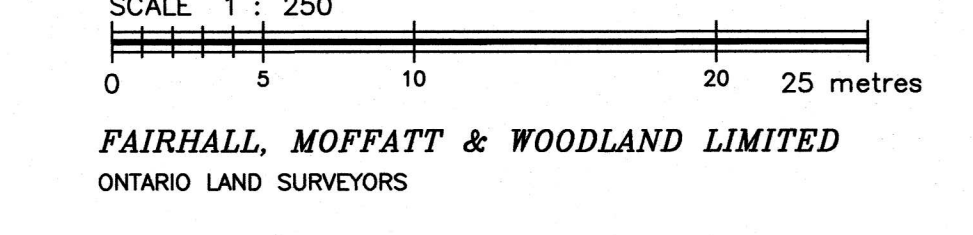
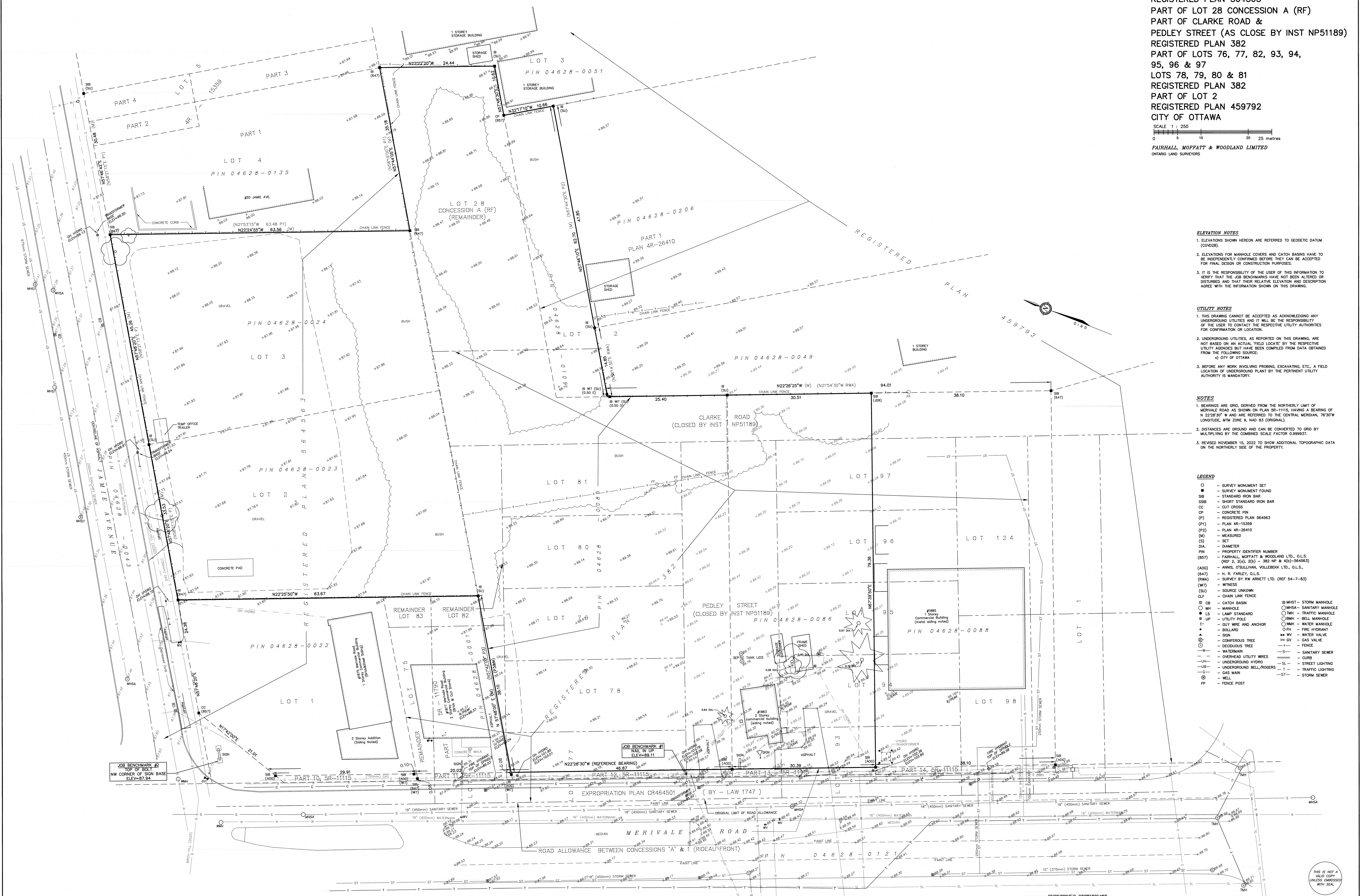


METRIC
DISTANCES AND ELEVATIONS SHOWN ON THIS PLAN ARE IN METRES
AND CAN BE CONVERTED TO FEET BY DIVIDING BY 0.3048

TOPOGRAPHIC PLAN OF
LOTS 2 AND 3
REGISTERED PLAN 564563
PART OF LOT 28 CONCESSION A (RF)
PART OF CLARKE ROAD &
PEDLEY STREET (AS CLOSE BY INST NP51189)
REGISTERED PLAN 382
PART OF LOTS 76, 77, 82, 93, 94,
95, 96 & 97
LOTS 78, 79, 80 & 81
REGISTERED PLAN 382
PART OF LOT 2
REGISTERED PLAN 459792
CITY OF OTTAWA



FAIRHALL, MOFFATT & WOODLAND LIMITED
ONTARIO LAND SURVEYORS



- ELEVATION NOTES**
- ELEVATIONS SHOWN HEREON ARE REFERRED TO GEODETIC DATUM (CGD028).
 - ELEVATIONS FOR MANHOLE COVERS AND CATCH BASINS HAVE TO BE INDEPENDENTLY CONFIRMED BEFORE THEY CAN BE ACCEPTED FOR FINAL DESIGN OR CONSTRUCTION PURPOSES.
 - IT IS THE RESPONSIBILITY OF THE USER OF THIS INFORMATION TO VERIFY THAT THE JOB BENCHMARKS HAVE NOT BEEN ALTERED OR DISTURBED AND THAT THEIR RELATIVE ELEVATION AND DESCRIPTION AGREE WITH THE INFORMATION SHOWN ON THIS DRAWING.

- UTILITY NOTES**
- THIS DRAWING CANNOT BE ACCEPTED AS ACKNOWLEDGING ANY UNDERGROUND UTILITIES AND IT WILL BE THE RESPONSIBILITY OF THE USER TO CONTACT THE RESPECTIVE UTILITY AUTHORITIES FOR CONFIRMATION OR LOCATION.
 - UNDERGROUND UTILITIES, AS REPORTED ON THIS DRAWING, ARE NOT BASED ON AN ACTUAL 'FIELD LOCATE' BY THE RESPECTIVE UTILITY AGENCIES BUT HAVE BEEN COMPILED FROM DATA OBTAINED FROM THE FOLLOWING SOURCE:
a) CITY OF OTTAWA
 - BEFORE ANY WORK INVOLVING PROBING, EXCAVATING, ETC., A FIELD LOCATION OF UNDERGROUND PLANT BY THE PERTINENT UTILITY AUTHORITY IS MANDATORY.

- NOTES**
- BEARINGS ARE GRID, DERIVED FROM THE NORTHERLY LIMIT OF MERIVALE ROAD AS SHOWN ON PLAN 50-11115, HAVING A BEARING OF N 22°28'30" W AND ARE REFERRED TO THE CENTRAL MERIDIAN, 76°30' W LONGITUDE, N.T.M. ZONE 9, NAD 83 (ORIGINAL).
 - DISTANCES ARE GROUND AND CAN BE CONVERTED TO GRID BY MULTIPLYING BY THE COMBINED SCALE FACTOR 0.999937.
 - REVISED NOVEMBER 15, 2022 TO SHOW ADDITIONAL TOPOGRAPHIC DATA ON THE NORTHERLY SIDE OF THE PROPERTY.

- LEGEND**
- - SURVEY MONUMENT SET
 - - SURVEY MONUMENT FOUND
 - SB - STANDARD IRON BAR
 - SSB - SHORT STANDARD IRON BAR
 - CC - CUT CROSS
 - CP - CONCRETE PIN
 - (P) - REGISTERED PLAN 564563
 - (P1) - PLAN 48-15359
 - (P2) - PLAN 48-26410
 - (M) - MEASURED
 - (S) - SET
 - DA - DIAMETER
 - FIN - PROPERTY IDENTIFIER NUMBER
 - (857) - FAIRHALL, MOFFATT & WOODLAND LTD., O.L.S. (REF 2-260-20) - 382 NP & 403-564943
 - (A00) - ANNIS, O'SULLIVAN, VOLLEBEKE LTD., O.L.S.
 - (847) - H. R. FARLEY, O.L.S.
 - (RWA) - SURVEY BY RW ARNETT LTD. (REF 54-7-83)
 - (WT) - WITNESS
 - (SU) - SOURCE UNKNOWN
 - CLF - CHAIN LINK FENCE
 - CB - CATCH BASIN
 - OH - MANHOLE
 - LS - LAMP STANDARD
 - UP - UTILITY POLE
 - W - CITY WIRE AND ANCHOR
 - B - BOLLARD
 - S - SIGN
 - CT - CONIFEROUS TREE
 - DT - DECIDUOUS TREE
 - W - WATERMAIN
 - OH - OVERHEAD UTILITY WIRES
 - UH - UNDERGROUND HYDRO
 - UB - UNDERGROUND BELL/ROGERS
 - G - GAS MAIN
 - M - WELL
 - FP - FENCE POST
 - MB - STORM MANHOLE
 - MSA - SANITARY MANHOLE
 - TMH - TRAFFIC MANHOLE
 - BMH - BELL MANHOLE
 - WMH - WATER MANHOLE
 - PH - FIRE HYDRANT
 - WV - WATER VALVE
 - GV - GAS VALVE
 - F - FENCE
 - S - SANITARY SEWER
 - C - CURB
 - SL - STREET LIGHTING
 - T - TRAFFIC LIGHTING
 - ST - STORM SEWER

SURVEYOR'S CERTIFICATE

I CERTIFY THAT:
1. THIS SURVEY AND PLAN ARE CORRECT AND IN ACCORDANCE WITH THE SURVEYS ACT, THE SURVEYORS ACT, THE LAND TITLES ACT AND THE REGULATIONS MADE UNDER THEM.
2. THE SURVEY WAS COMPLETED ON OCTOBER 26, 2022.

DATE: 10/26/22

JOHN H. GUTRI
ONTARIO LAND SURVEYOR

Fairhall Moffatt & Woodland
ONTARIO LAND SURVEYORS

STANDARD INFORMATION SERVICES
100-200 RIVER ROAD, SUITE 200, OTTAWA, ONTARIO K2K 1K8
TEL: (613) 991-2200 FAX: (613) 991-1166

Job No. AC21300
E365796 - N5022030
REFERENCE No. H01 - 382 NP
S:\N5022030\02213_topo.dwg (K0)

© COPYRIGHT 2022. REPRODUCTION, ALTERATION OR DISTRIBUTION OF THIS PLAN WITHOUT THE WRITTEN CONSENT OF FAIRHALL, MOFFATT & WOODLAND LIMITED IS PROHIBITED.