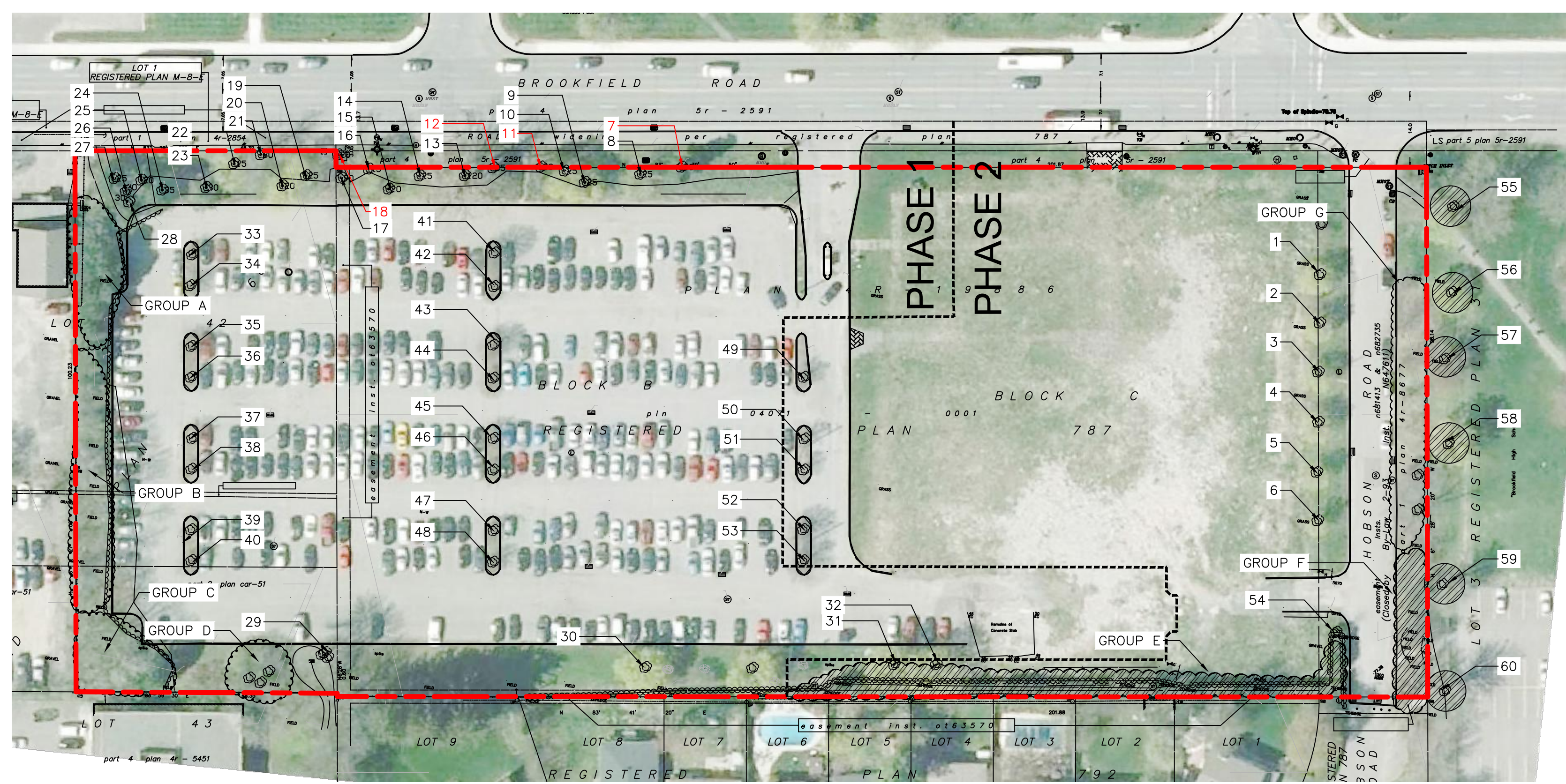
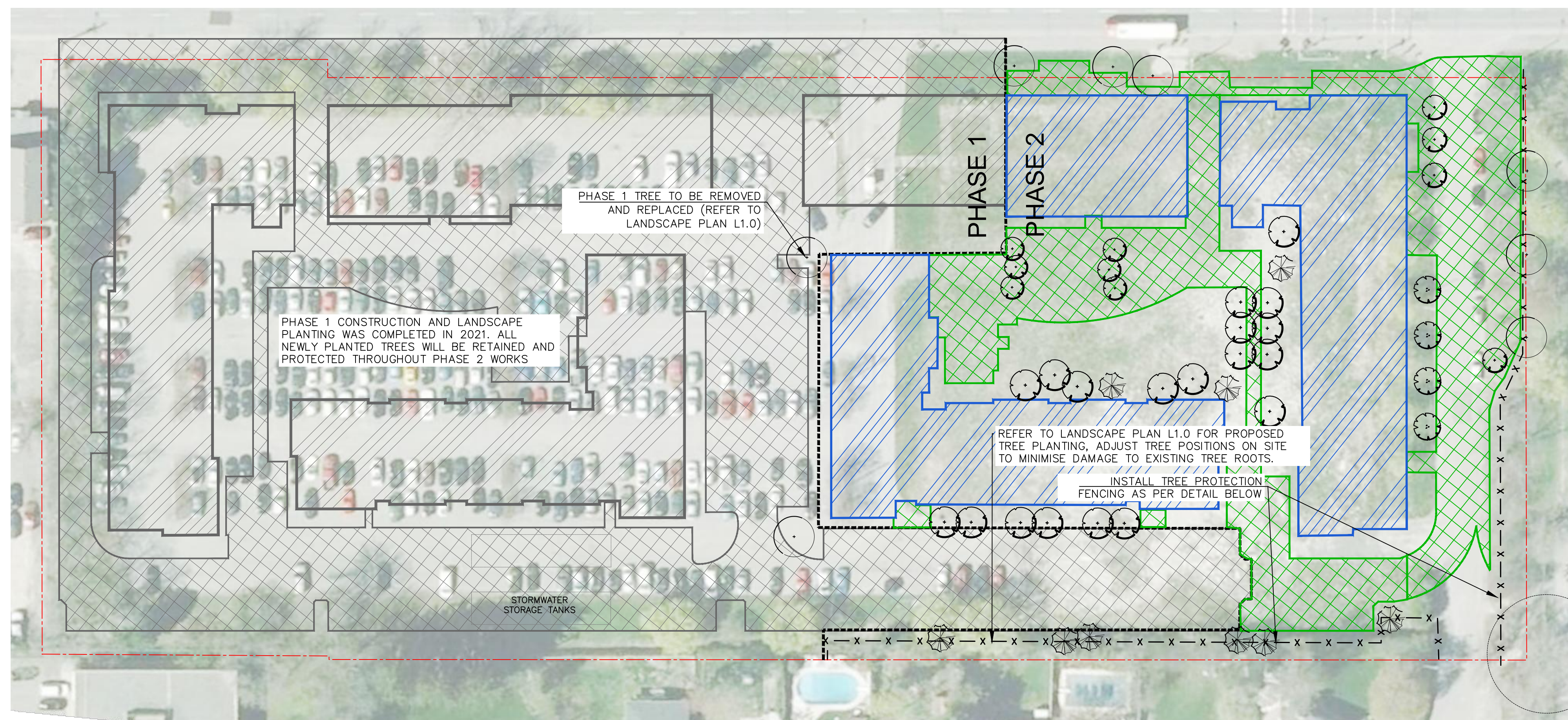


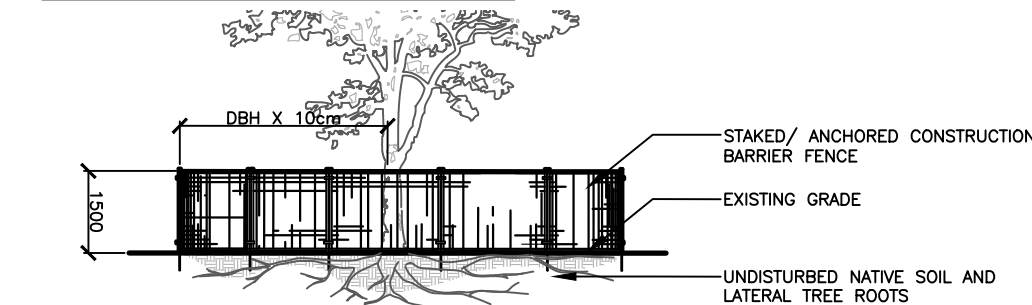
TREE CONSERVATION MAP 1 – AERIAL PHOTOGRAPHY:



TREE CONSERVATION MAP 2 – PROPOSED DEVELOPMENT:



TREE PROTECTION FENCING



NOTE:
THIS TCR WAS ORIGINALLY COMPLETED 27TH OCT 2017 FOR PHASE 1 OF BROOKFIELD RESIDENTIAL DEVELOPMENT. THE REPORT HAS BEEN REVIEWED AND UPDATED 2 JUNE 2022 FOR PHASE 2 OF THE DEVELOPMENT.

- NOTES:**
THE FOLLOWING PROTECTION MEASURES MUST BE IMPLEMENTED FOR RETAINED TREES, BOTH ON SITE AND ADJACENT SITES, PRIOR TO ANY TREE REMOVAL OR SITE WORKS AND MAINTAINED FOR THE DURATION OF CONSTRUCTION ON SITE.
- UNDER THE GUIDANCE OF AN ARBORIST, ERECT A FENCE AT THE CRITICAL ROOT ZONE (CRZ) OF TREES WHERE THE CRZ IS ESTABLISHED AS BEING 10 CENTIMETERS FROM THE TRUNK FOR EVERY CENTIMETER OF TRUNK DIAMETER AT BREAST HEIGHT. THE CRZ IS CALCULATED AS DBH X 10cm.
 - DO NOT PLACE ANY MATERIAL OR EQUIPMENT WITHIN THE CRZ OF THE TREE.
 - DO NOT RAISE OR LOWER THE GRADE WITHIN THE CRZ WITHOUT APPROVAL.
 - DO NOT ATTACH ANY SIGNS, NOTICES OR POSTERS TO ANY TREE.
 - TUNNEL OR BORE WHEN DIGGING WITHIN THE CRZ OF A TREE.
 - DO NOT DAMAGE THE ROOT SYSTEM, TRUNK, OR BRANCHES OF ANY TREE.
 - ENSURE THAT EXHAUST FLUES FROM ALL EQUIPMENT ARE NOT DIRECTED TOWARDS ANY TREE CANOPY.

TREE #	BOTANICAL NAME	COMMON NAME	CALIPER (cm)	CONDITION	HIGH QUALITY TREE	RARE TREE	COMMENTS	TO BE PRESERVED
1	Acer platanoides	Norway Maple	32	Good	No	No	Tree in good condition.	NO
2	Acer platanoides	Norway Maple	33	Good	No	No	Tree in good condition.	NO
3	Acer platanoides	Norway Maple	26	Good	No	No	Tree in good condition.	NO
4	Acer platanoides	Norway Maple	28	Good	No	No	Tree in good condition. Some crossed branches.	NO
5	Acer platanoides	Norway Maple	25	Good	No	No	Tree in good condition.	NO
6	Acer platanoides	Norway Maple	24	Good	No	No	Tree in good condition. Some minor damage at base.	NO
7	Picea pungens	Colorado Blue Spruce	32	Good	No	No	Tree is well formed and vigorous	NO
8	Acer platanoides	Norway Maple	32	Good	No	No	Tree in good condition. There are some very minor dead branches in the canopy.	NO
9	Acer platanoides	Norway Maple	30	Good	No	No	Tree in good condition. There is minor die back in the interior canopy	NO
10	Acer platanoides	Norway Maple	25	Good	No	No	Tree in good condition	NO
11	Picea pungens	Colorado Blue Spruce	26	Poor	No	No	There is substantial die back through out the canopy of this tree and at the terminus of many branches. The canopy of this tree is thinning.	NO
12	Picea pungens	Colorado Blue Spruce	27	Poor	No	No	There is substantial die back through out the canopy of this tree and at the terminus of many branches. The canopy of this tree is thinning.	NO
13	Populus deltoides	Eastern Cottonwood	120	Poor	No	No	Tree in poor condition as there is high volume of dead wood through out the canopy of this tree. Many of the dead limbs are of substantial size.	NO
14	Acer platanoides	Norway Maple	31	Good	No	No	Tree in good condition	NO
15	Acer platanoides	Norway Maple	31	Good / Mod	No	No	Tree in good to moderate condition. Some die back to lower branches.	NO
16	Acer platanoides	Norway Maple	32	Good	No	No	Tree in good condition	NO
17	Fraxinus pennsylvanica	Green Ash	49	Dead	No	No	Tree is dead, evidence of emerald ash borer (EAB).	NO
18	Fraxinus pennsylvanica	Green Ash	18	Dead	No	No	Tree is dead, evidence of EAB	NO
19	Acer platanoides	Norway Maple	30	Good	No	No	Tree in good condition	NO
20	Acer platanoides	Norway Maple	23	Moderate	No	No	Tree in good condition	NO
21	Fraxinus pennsylvanica	Green Ash	41	Dead	No	No	Tree is dead, evidence of EAB.	NO
22	Acer platanoides	Norway Maple	28	Good	No	No	Tree in good condition	NO

TREES ON CITY PROPERTY:

- # 7
- # 11
- # 12
- # 18

SITE DESCRIPTION:

JUST OVER ONE HALF OF THE SITE HAS BEEN DEVELOPED AS PART OF THE PHASE 1 WORKS FOR STUDENT APARTMENTS AND GROUND FLOOR COMMERCIAL LANDSCAPE TREE AND SHRUB PLANTING ASSOCIATED WITH THE PHASE 1 WORKS WAS COMPLETED IN 2021 AND WILL BE RETAINED AND PROTECTED DURING CONSTRUCTION OF PHASE 2. THE TREES LOCATED ON THIS SITE ARE COMPOSED OF A VARIETY OF SPECIES, AND ARE LOCATED PRIMARILY IN A HEDGE ROW AROUND THE PERIMETER OF THE PARKING LOT. THE SITE IS PRIMARILY FLAT WITH WATER BEING DRAINED OFF SITE THROUGH THE STREET DRAINAGE NETWORK.

NOTES:

- THE PROPOSED PHASE 2 DEVELOPMENT WILL BE COVERED BY APPROXIMATELY 3000m² NEW HARD SURFACE, WITH AN ADDITIONAL 3775m² BEING COVERED BY THE PROPOSED BUILDING FOOTPRINTS.
- THE DEVELOPMENT SITE IS NOT CONSIDERED OF PRIMARY OR SUPPORTING SIGNIFICANCE AS NATURAL LANDS IN THE GREENSPACE MASTER PLAN. DUE TO THE LOW ENVIRONMENTAL VALUE OF THE SITE, IT IS NOT EXPECTED THAT FURTHER DISTURBANCE WILL SIGNIFICANTLY IMPACT THE ECOLOGICAL FUNCTION OF THE SURROUNDING AREA.
- THERE IS A HEDGE ROW THAT SPANS THE WESTERN EDGE OF THE PROPERTY. THERE ARE QUITE DISTINCT GROUPINGS OF TREES IN THIS HEDGE ROW, AND THEY ARE CATEGORIZED BELOW.

GROUP A:

THIS GROUP IS COMPRISED OF PINUS NIGRA (AUSTRIAN PINE). THEY ARE REMOVED DURING PHASE 1 CONSTRUCTION, AND RANGE FROM 18 – 36 CM DBH.

GROUP B:

THIS GROUP CONSISTS OF PRIMARILY FRAXINUS PENNSYLVANICA (GREEN ASH) (THERE ARE 32) WHICH ARE ALL DEAD AND SHOW EVIDENCE OF THE EMERALD ASH BORER. THERE ARE ALSO TWO (2) ELAEAGNUS ANGSTIFOLIA (REMOVED DURING PHASE 1) THAT ARE IN MODERATE CONDITION. THEY HAVE DBHS RANGING FROM 10-18 CM. THERE ARE TWO (2) ULMUS PUMILA (SIBERIAN ELMS) THAT ARE IN MODERATE CONDITION WITH SOME MINOR DEAD BRANCHING IN THE CANOPY. THEIR DBH IS BETWEEN 14-22.

GROUP C:

THIS GROUP IS THE MOST DIVERSE IN THE HEDGE ROW. THERE ARE SEVEN (7) REMOVED DURING PHASE 1 (SIBERIAN ELMS). FOUR (4) OF THE REMOVED TREES ARE IN SEVERE DECLINE. THE REMAINING THREE ARE IN MODERATE TO POOR CONDITION AND RANGE FROM 24-28 CM DBH. THERE ARE FOUR (4) FRAXINUS PENNSYLVANICA THAT ARE DEAD AND SHOW EVIDENCE OF EAB. THEY RANGE FROM

23	Pinus nigra	Austrian Pine	30	Good	No	No	Tree in good condition. Has a very slight lean	NO
24	Pinus nigra	Austrian Pine	38	Good	No	No	Tree is in good condition, co-dominant stem at 3.0m height.	NO
25	Pinus nigra	Austrian Pine	27	Good	No	No	Tree is in good condition	NO
26	Pinus nigra	Austrian Pine	30	Good	No	No	Tree is in good condition	NO
27	Pinus nigra	Austrian Pine	30	Good	No	No	Tree is in good condition	NO
28	Pinus nigra	Austrian Pine	40	Good	No	No	Tree is in good condition, some die back of lower branches.	NO
29	Fraxinus pennsylvanica	Green Ash	26	Dead	No	No	Tree is dead, evidence of EAB.	NO
30	Acer platanoides	Norway Maple	23	Moderate	No	No	Large split in main branch union.	NO
31	Acer platanoides	Norway Maple	28	Good	No	No	Tree is in good condition	YES
32	Acer platanoides	Norway Maple	18	Poor	No	No	Tree has split at main branch union. Half of the tree is on the ground.	YES
33	Tilia cordata	Little Leaf Linden	22	Good	No	No	Tree in good condition. Has had the lower canopy branches trimmed.	NO
34	Tilia cordata	Little Leaf Linden	22	Good / Mod	No	No	Tree in good condition. Some die back in lower branches.	NO
35	Tilia cordata	Little Leaf Linden	22	Good	No	No	Tree in good condition. Has had the lower canopy branches trimmed.	NO
36	Tilia cordata	Little Leaf Linden	20	Moderate	No	No	Canopy is very thin with some damaged/dead branches.	NO
37	Tilia cordata	Little Leaf Linden	20	Good / Mod	No	No	Tree in good condition. Some die back in lower branches.	NO
38	Tilia cordata	Little Leaf Linden	20	Good	No	No	Tree in good condition. Has had the lower canopy branches trimmed.	NO
39	Tilia cordata	Little Leaf Linden	20	Good / Mod	No	No	Canopy is thin with some die back of lower branches.	NO
40	Tilia cordata	Little Leaf Linden	20	Good / Mod	No	No	A lower branch has dropped off and damaged trunk.	NO
41	Tilia cordata	Little Leaf Linden	28	Good	No	No	Tree in good condition. Has had the lower canopy branches trimmed.	NO
42	Tilia cordata	Little Leaf Linden	26	Moderate	No	No	Tree in good condition. Has had the lower canopy branches trimmed.	NO
43	Tilia cordata	Little Leaf Linden	24	Good	No	No	Tree in good condition. Has had the lower canopy branches trimmed.	NO
44	Tilia cordata	Little Leaf Linden	22	Good	No	No	Tree in good condition. Has had the lower canopy branches trimmed.	NO
45	Tilia cordata	Little Leaf Linden	20	Good / Mod	No	No	Canopy is thin with some die back of lower branches.	NO
46	Tilia cordata	Little Leaf Linden	20	Good	No	No	Tree in good condition. Has had the lower canopy branches trimmed.	NO
47	Tilia cordata	Little Leaf Linden	20	Good	No	No	Tree in good condition. Has had the lower canopy branches trimmed.	NO
48	Tilia cordata	Little Leaf Linden	20	Mod-Poor	No	No	Poor form. Die back of central leader.	NO
49	Tilia cordata	Little Leaf Linden	20	Good-Moderate	No	No	Tree in good condition. Has had the lower canopy branches trimmed.	NO
50	Tilia cordata	Little Leaf Linden	20	Good	No	No	Tree in good condition. Has had the lower canopy branches trimmed.	NO
51	Tilia cordata	Little Leaf Linden	19	Good / Mod	No	No	Tree is leaning slightly. Some die back of upper canopy.	NO
52	Tilia cordata	Little Leaf Linden	28	Good	No	No	Tree in good condition. Has had the lower canopy branches trimmed.	NO
53	Tilia cordata	Little Leaf Linden	28	Good / Mod	No	No	Damage at base of tree. Some die back in upper canopy.	NO
54	Ulmus pumila	Siberian Elm	18	Moderate	No	No	Tree crowded by cedar hedge, thin canopy.	NO
55	Acer saccharum	Sugar Maple	35	Moderate	No	No	30% canopy die back on outer branches.	Yes
56	Acer platanoides	Norway Maple	35	Good	No	No	Tree in good condition.	Yes
57	Acer saccharum	Sugar Maple	45	Good	No	No	Tree in good condition.	Yes
58	Acer saccharum	Sugar Maple	50	Good	No	No	Tree in good condition.	Yes
59	Ulmus pumila	Siberian Elm	80	Good / Mod	No	No	Tree in good condition. Some black spot on leaves, 15% canopy dieback.	Yes
60	Ulmus pumila	Siberian Elm	100	Good / Mod	No	No	Tree in good condition. Some black spot on leaves.	Yes

16-24 DBH. THREE (3) PINUS NIGRA (AUSTRIAN PINES) ARE ALSO LOCATED IN THIS GROUP. THEY ARE IN GOOD CONDITION AND RANGE FROM 14-32 DBH. THERE IS A LONE ACER (REMOVED DURING PHASE 1) (A MAPLE) THAT IS IN POOR CONDITION AND HAS A DBH OF 13 CM.

GROUP D:

THIS GROUP IS LOCATED ALONG THE SOUTHERN EDGE OF THE PARKING LOT. IT IS COMPRISED OF ACER NEGUNDO (MANITOBA MAPLE) AND ELAEAGNUS ANGSTIFOLIA. ALL TREES IN THIS GROUP ARE POORLY FORMED AND LEA (REMOVED DURING PHASE 1) REMOVED DURING PHASE 1. THEY RANGE IN SIZE FROM 12-22CM DBH.

GROUP E:

THIS GROUP IS COMPRISED OF PREDOMINANTLY ACER NEGUNDO (MANITOBA MAPLE), THUJA OCCIDENTALIS (WHITE CEDAR) AND SYRINGA SP. (COMMON LILAC). THE TREES RANGE IN SIZE FROM <10CM - 15CM DBH. GROUP E TO BE RETAINED.

GROUP F:

THIS GROUP IS LOCATED ON A BANK ALONG THE EASTERN EDGE OF HOBSON ROAD. IT IS COMPRISED OF FORTY EIGHT (48) ULMUS SP. (ELM) IN MODERATE TO GOOD CONDITION AND DBH RANGE FROM 10 - 25CM. THERE IS ALSO A LARGE AMOUNT OF RHAMMUS CATHARTICA (COMMON BUCKTHORN) AND TWO (2) CRATAEGUS SP. (HAWTHORN).

GROUP F TO BE RETAINED, APPROX 1.5m STRIP OF BUCKTHORN TO BE CLEARED FROM EDGE OF PAVEMENT TO ALLOW FOR NEW NATIVE SHRUB PLANTING ADJACENT TO PATH.

GROUP G:

THIS GROUP CONSISTS OF NINE (9) FRAXINUS SP. (ASH) THAT ARE ALL DEAD AND SHOW EVIDENCE OF EAB. TREES RANGE IN SIZE FROM 15-30CM DBH. GROUP G TO BE REMOVED AS REQUIRED FOR CONSTRUCTION LIMITS.

LEGEND:

- EXISTING TREE TO BE REMOVED
- EXISTING TREE TO REMAIN
- PROPERTY LINE
- PROPOSED NEW BUILDING FOOTPRINT – PHASE 2
- PROPOSED HARD SURFACING – PHASE 2
- BUILDING FOOTPRINT – PHASE 1
- HARD SURFACING – PHASE 1
- HEDGEROW TREE GROUPING
- PROPOSED DECIDUOUS TREE PLANTING
- PROPOSED CONIFEROUS TREE PLANTING
- PROPOSED TREE PROTECTION FENCE

03 18 JAN 2023	RE-ISSUED FOR PHASE 2 SPA
02 24 JUN 2022	ISSUED FOR PHASE 2 SPA
01 OCT 27, 2017	ISSUED FOR PHASE 1 SPA
no. date	revision

It is the responsibility of the appropriate contractor to check and verify all dimensions on site and report all errors and/or omissions to the architect.

All contractors must comply with all pertinent codes and by-laws.

Do not scale drawings.

This drawing may not be used for construction until signed.

Copyright reserved.

ASSOCIATION OF LANDSCAPE ARCHITECTS ONTARIO
MEMBER
CSW
319 McRae Avenue, Suite 502 Ottawa, Ontario K1Z 0B9
T: (613) 729-4536

Hobin Architecture Incorporated
63 Pamela Street
Ottawa, Ontario
Canada K1S 3K7
T: 613-238-7200
F: 613-235-2005
E: mail@hobinarc.com
hobinarc.com

THIS GROUP IS LOCATED ALONG THE SOUTHERN EDGE OF THE PARKING LOT. IT IS COMPRISED OF ACER NEGUNDO (MANITOBA MAPLE) AND ELAEAGNUS ANGSTIFOLIA. ALL TREES IN THIS GROUP ARE POORLY FORMED AND LEA (REMOVED DURING PHASE 1) REMOVED DURING PHASE 1. THEY RANGE IN SIZE FROM 12-22CM DBH.

613-238-7200 Fax: 613-235-2005
Email: mail@hobinarc.com

project
BROOKFIELD RESIDENCE APARTMENT BUILDING
770 BROOKFIELD ROAD, OTTAWA

drawing title
Phase 2 - TREE CONSERVATION REPORT

drawn	date	scale
SE	02.06.2022	1:500

project 1964-02
drawing no. **TCR1**