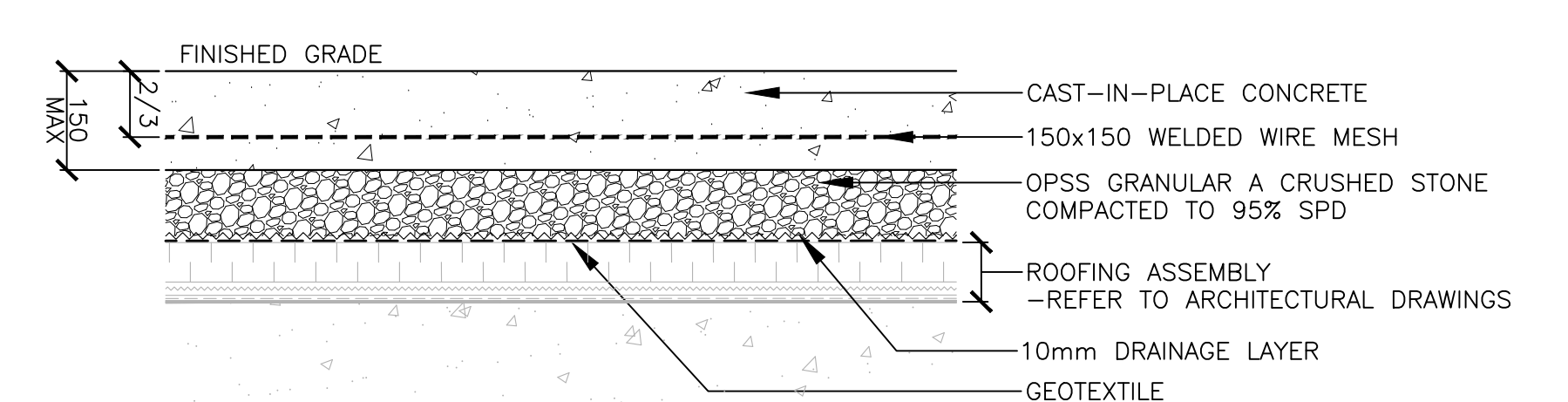
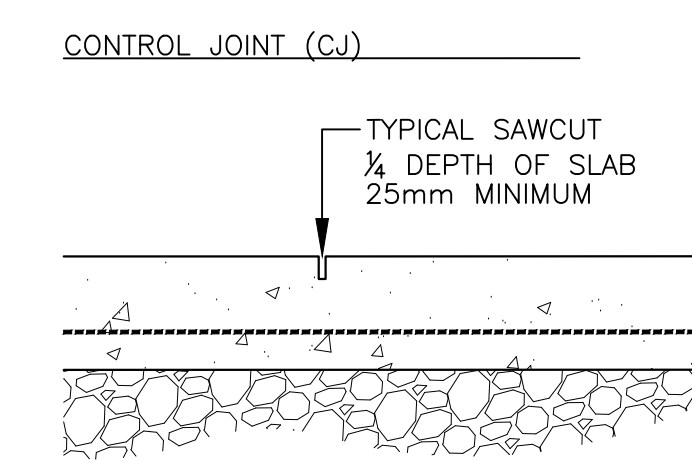


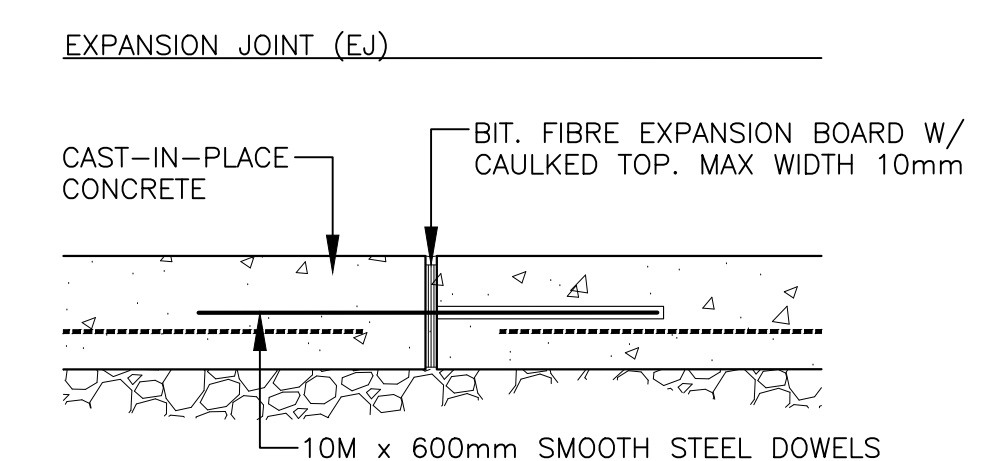
1 CONCRETE PAVING Scale: 1:10



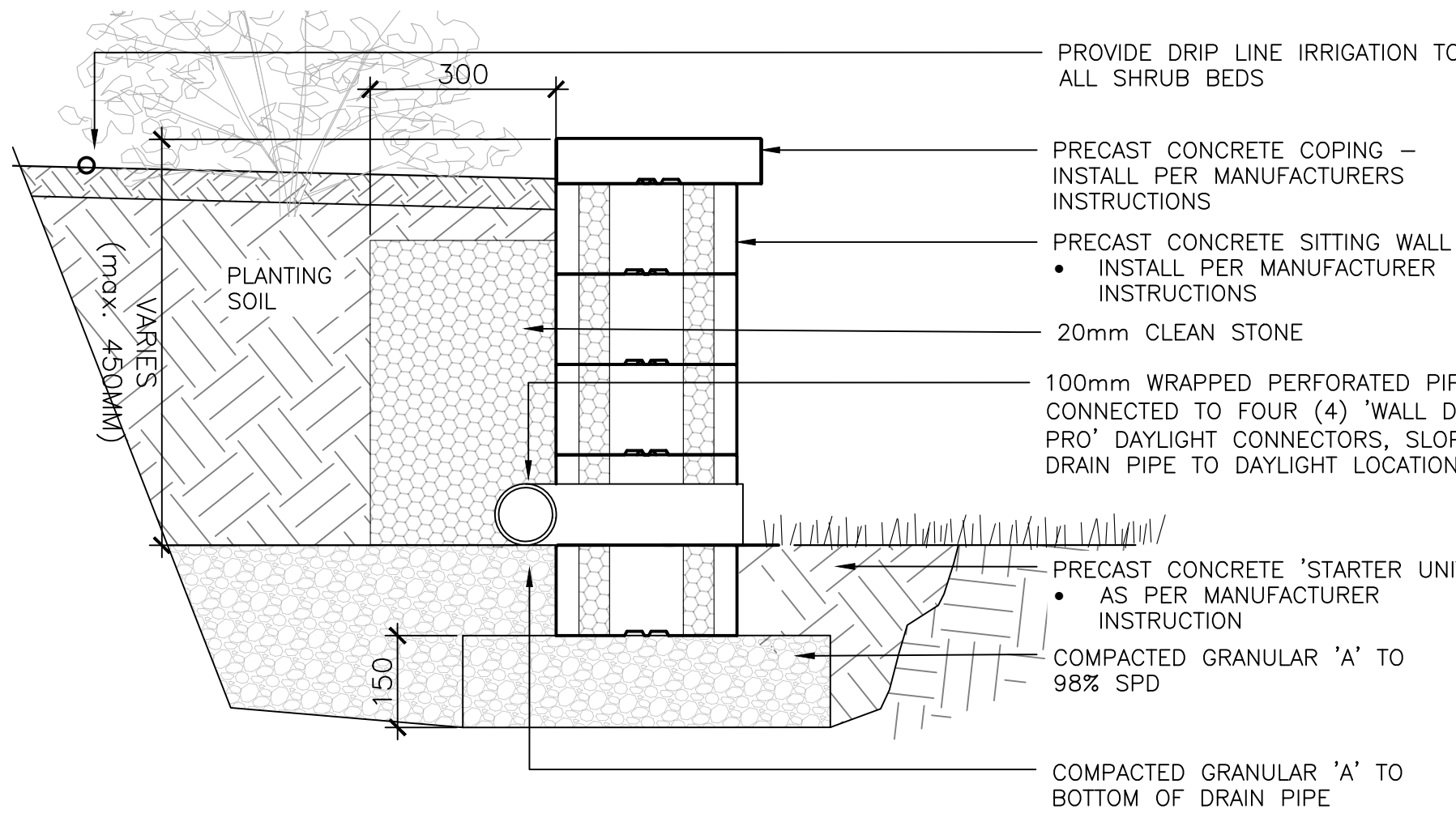
2 CONCRETE PAVING OVER ROOF DECK Scale: 1:10



CONTROL JOINT (CJ) NOTES:  
1. REFER TO DRAWINGS FOR JOINT LAYOUT  
2. SAWCUT WITHIN 48 HOURS OF POUR  
3. NO TOOLED EDGES



EXPANSION JOINT (EJ) NOTES:  
1. REFER TO DRAWINGS FOR JOINT LAYOUT  
2. ALL STEEL DOWELS TO BE EPOXY - COATED  
3. NO TOOLED EDGES



6 PRECAST CONCRETE WALL Scale: 1:10

PROVIDE DRIP LINE IRRIGATION TO ALL SHRUB BEDS

PRECAST CONCRETE COPING - INSTALL PER MANUFACTURER'S INSTRUCTIONS

PRECAST CONCRETE SITTING WALL - INSTALL PER MANUFACTURER'S INSTRUCTIONS

20mm CLEAN STONE

100mm WRAPPED PERFORATED PIPE, CONNECTED TO FOUR (4) 'WALL DRAIN PRO' DAYLIGHT CONNECTORS, SLOPE DRAIN PIPE TO DAYLIGHT LOCATIONS

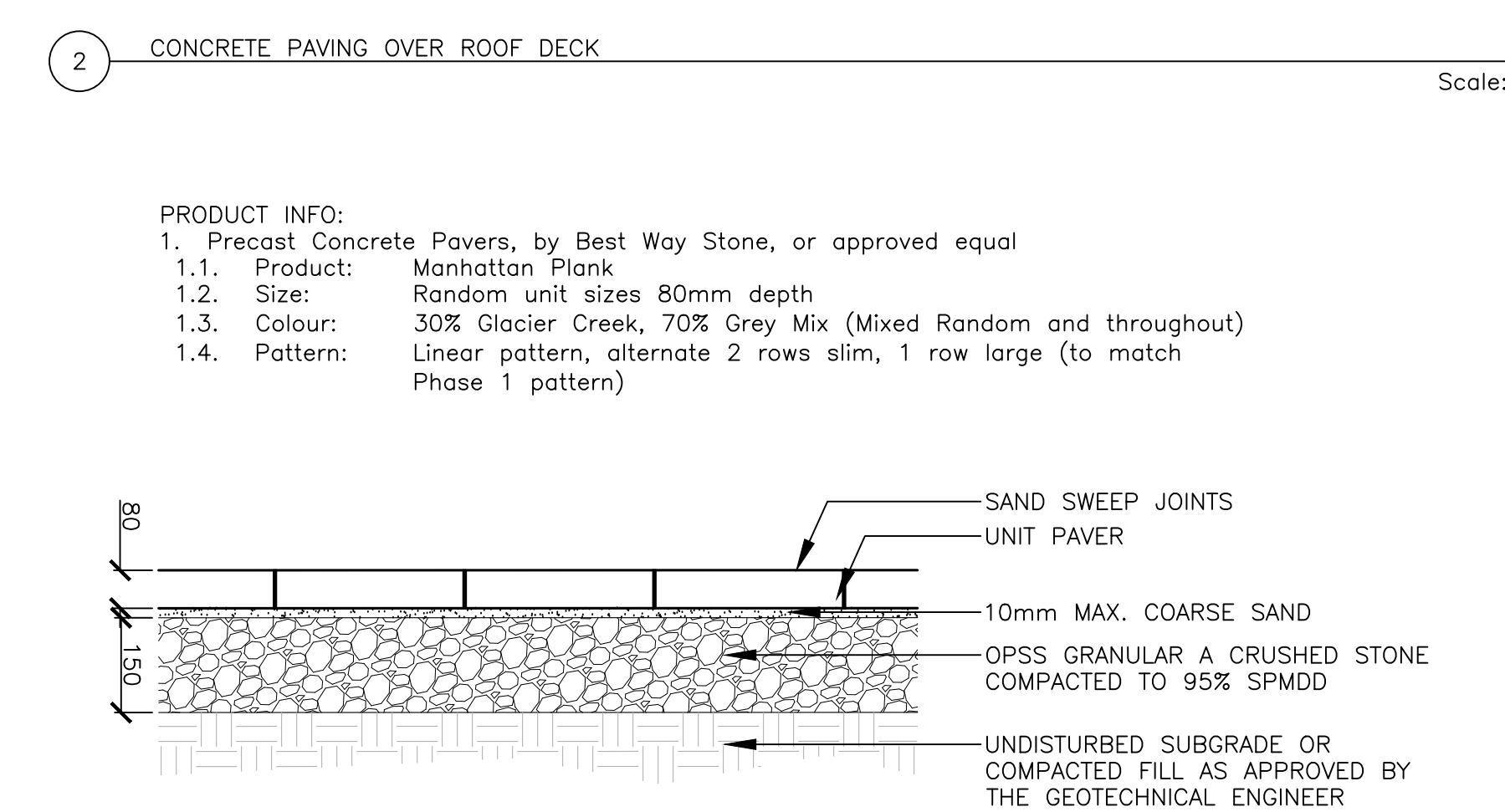
PRECAST CONCRETE 'STARTER UNIT' - AS PER MANUFACTURER INSTRUCTION

COMPACTED GRANULAR 'A' TO 98% SPD

COMPACTED GRANULAR 'A' TO BOTTOM OF DRAIN PIPE

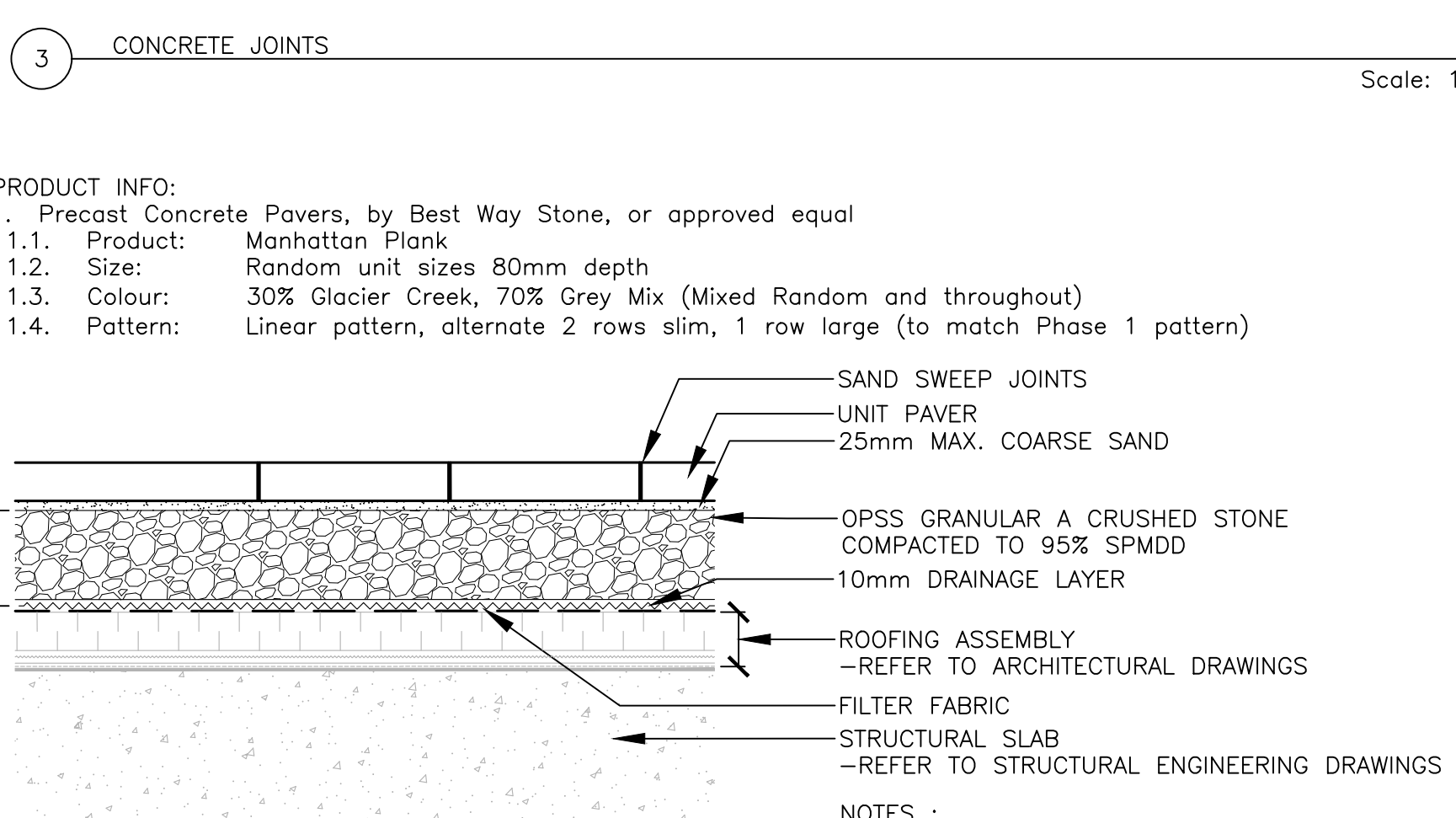
NOTES:  
• ALL VERTICAL WALL JOINTS TO BE STAGGERED  
• ALL CORNERS TO BE OVERLAPPED (NO MITRE CUTS)  
• SECURE ALL WALL UNITS WITH MASONRY ADHESIVE

PRODUCT INFO:  
1. Precast Walls, by Oaks Landscape Products, or approved equal  
1.1. Product: Nueva - 150 Wall units  
1.2. Size: Width of wall shall be 300mm  
1.3. Colour: Greyfield  
2. Precast Coping, by Oaks Landscape Products, or approved equal  
2.1. Product: Nueva Coping Unit  
2.2. Size: 600 x 75 x 340  
2.3. Colour: Marble Grey  
3. Wall Drain Pro Drainage pipe, by Great North Hardscape, or approved equal  
3.1. Product: Wall Drain Pro  
3.2. Size: 150mm height x 45mm width  
3.3. Colour: Grey



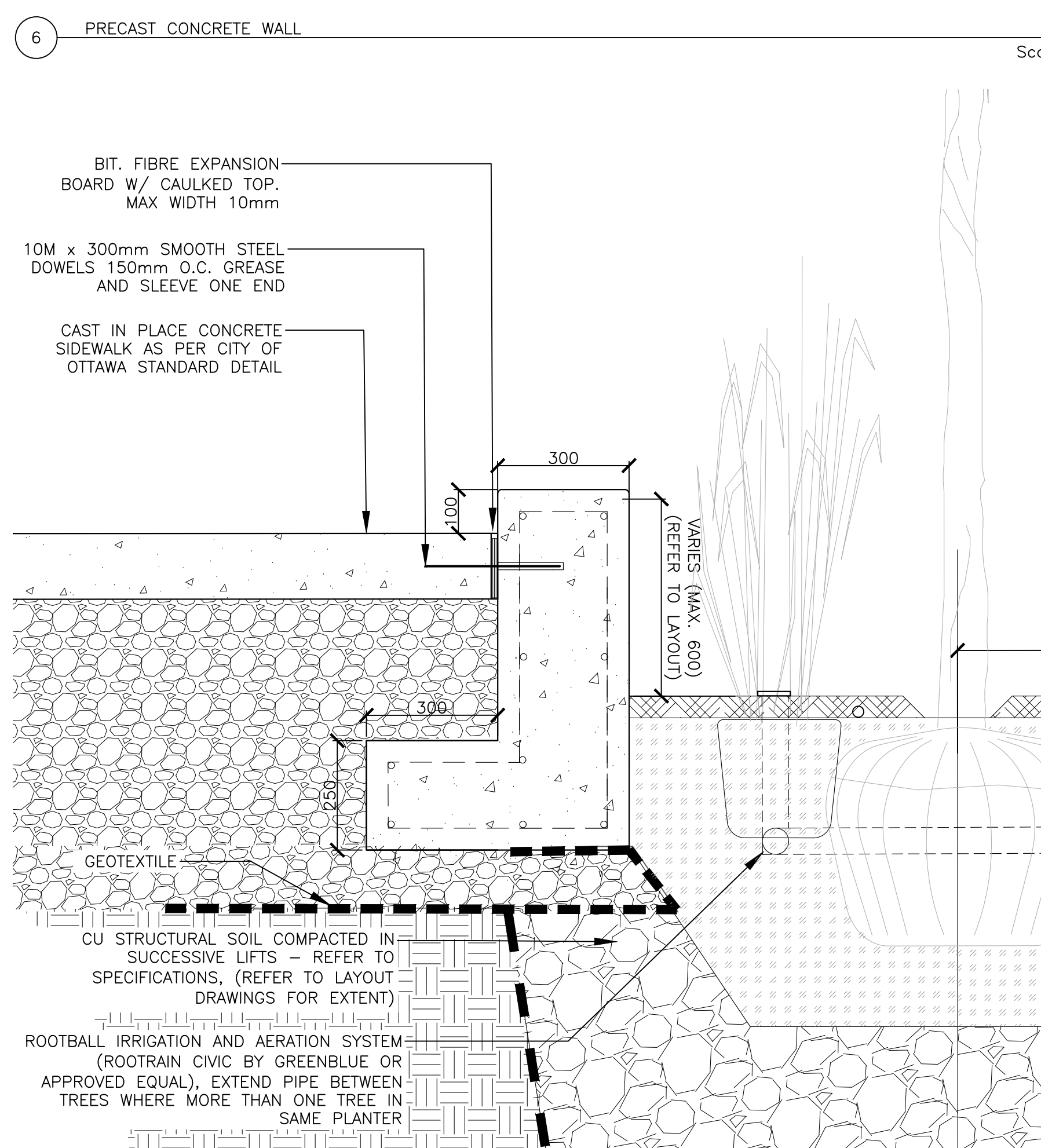
4 UNIT PAVING Scale: 1:10

PRODUCT INFO:  
1. Precast Concrete Pavers, by Best Way Stone, or approved equal  
1.1. Product: Manhattan Plank  
1.2. Size: Random unit sizes 80mm depth  
1.3. Colour: 30% Glacier Creek, 70% Grey Mix (Mixed Random and throughout)  
1.4. Pattern: Linear pattern, alternate 2 rows slim, 1 row large (to match Phase 1 pattern)



5 UNIT PAVING OVER ROOF DECK Scale: 1:10

PRODUCT INFO:  
1. Precast Concrete Pavers, by Best Way Stone, or approved equal  
1.1. Product: Manhattan Plank  
1.2. Size: Random unit sizes 80mm depth  
1.3. Colour: 30% Glacier Creek, 70% Grey Mix (Mixed Random and throughout)  
1.4. Pattern: Linear pattern, alternate 2 rows slim, 1 row large (to match Phase 1 pattern)



7 C.I.P. CONCRETE PLANTER WALL (AT BROOKFIELD ROAD) Scale: 1:10

BIT. FIBRE EXPANSION BOARD W/ CAULKED TOP. MAX WIDTH 10mm

10M x 300mm SMOOTH STEEL DOWELS 150mm O.C. GREASE AND SLEEVE ONE END

CAST IN PLACE CONCRETE SIDEWALK AS PER CITY OF OTTAWA STANDARD DETAIL

OPSS GRANULAR A CRUSHED STONE COMPACTED TO 95% SPMD

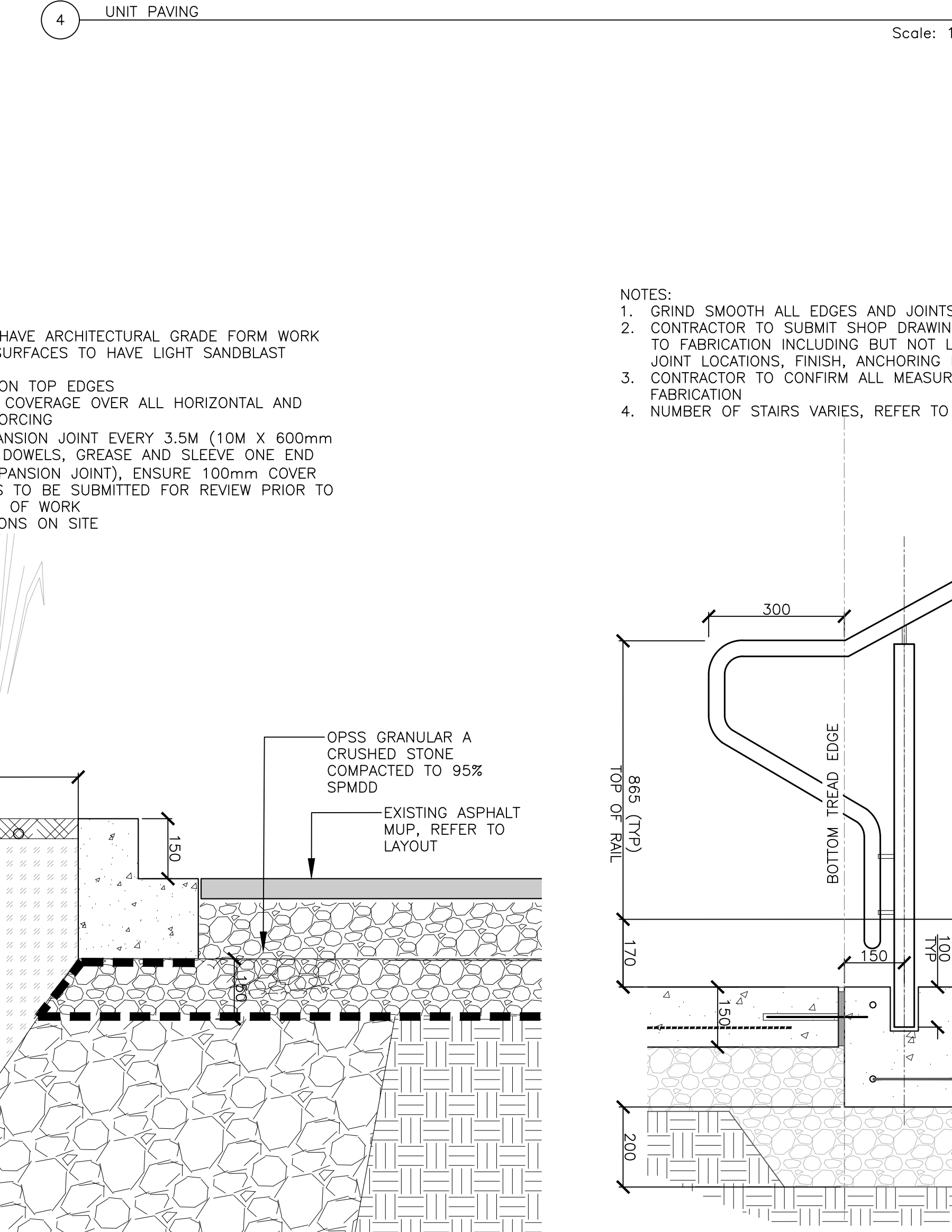
EXISTING ASPHALT MUP, REFER TO LAYOUT

GEOTEXTILE

CU STRUCTURAL SOIL COMPACTED IN SUCCESSIVE LIFTS - REFER TO SPECIFICATIONS, (REFER TO LAYOUT DRAWINGS FOR EXTENT)

ROOTBALL IRRIGATION AND AERATION SYSTEM (ROOTRAIN CIVIC BY GREENBLUE OR APPROVED EQUAL), EXTEND PIPE BETWEEN TREES WHERE MORE THAN ONE TREE IN SAME PLANTER

NOTES:  
1. ALL WALLS TO HAVE ARCHITECTURAL GRADE FORM WORK  
2. ALL EXPOSED SURFACES TO HAVE LIGHT SANDBLAST FINISH  
3. 10mm RADIUS ON TOP EDGES  
4. ENSURE 75mm COVERAGE OVER ALL HORIZONTAL AND VERTICAL REINFORCING  
5. BIT. FIBRE EXPANSION JOINT EVERY 3.5M (10M X 600mm SMOOTH STEEL DOWELS, GREASE AND SLEEVE ONE END (6 AT EACH EXPANSION JOINT), ENSURE 100mm COVER  
6. SHOP DRAWINGS TO BE SUBMITTED FOR REVIEW PRIOR TO COMMENCEMENT OF WORK  
7. VERIFY DIMENSIONS ON SITE



8 C.I.P. CONCRETE STEPS Scale: 1:10

50mm SAFETY STRIP  
• CARBORUNDUM / EPOXY MIX WITH RAISED TEXTURE SET INTO EACH TREAD  
• END SAFETY STRIP 150mm BEFORE END OF EACH TREAD  
• SLOPE TREADS TO FACE AT 1.0%  
• BROOM FINISH, ENSURE NON-SLIP SURFACE

15M NOSING BAR MIN 70mm COVER

ENLARGEMENT - STAIR NOSING

NOTES:  
1. GRIND SMOOTH ALL EDGES AND JOINTS  
2. CONTRACTOR TO SUBMIT SHOP DRAWINGS FOR APPROVAL PRIOR TO FABRICATION INCLUDING BUT NOT LIMITED TO EXPANSION JOINT LOCATIONS, FINISH, ANCHORING ETC.  
3. CONTRACTOR TO CONFIRM ALL MEASUREMENTS ON SITE PRIOR TO FABRICATION  
4. NUMBER OF STAIRS VARIES, REFER TO LAYOUT AND GRADING

HANDRAIL REFER TO DETAIL 8/12.2

316 SAE, MARINE GRADE STAINLESS STEEL POSTS  
• 50mm OUTSIDE DIA.  
• BRUSHED FINISH

EXPANSION JOINT  
• SMOOTH STEEL DOWEL INTO EXISTING CONCRETE

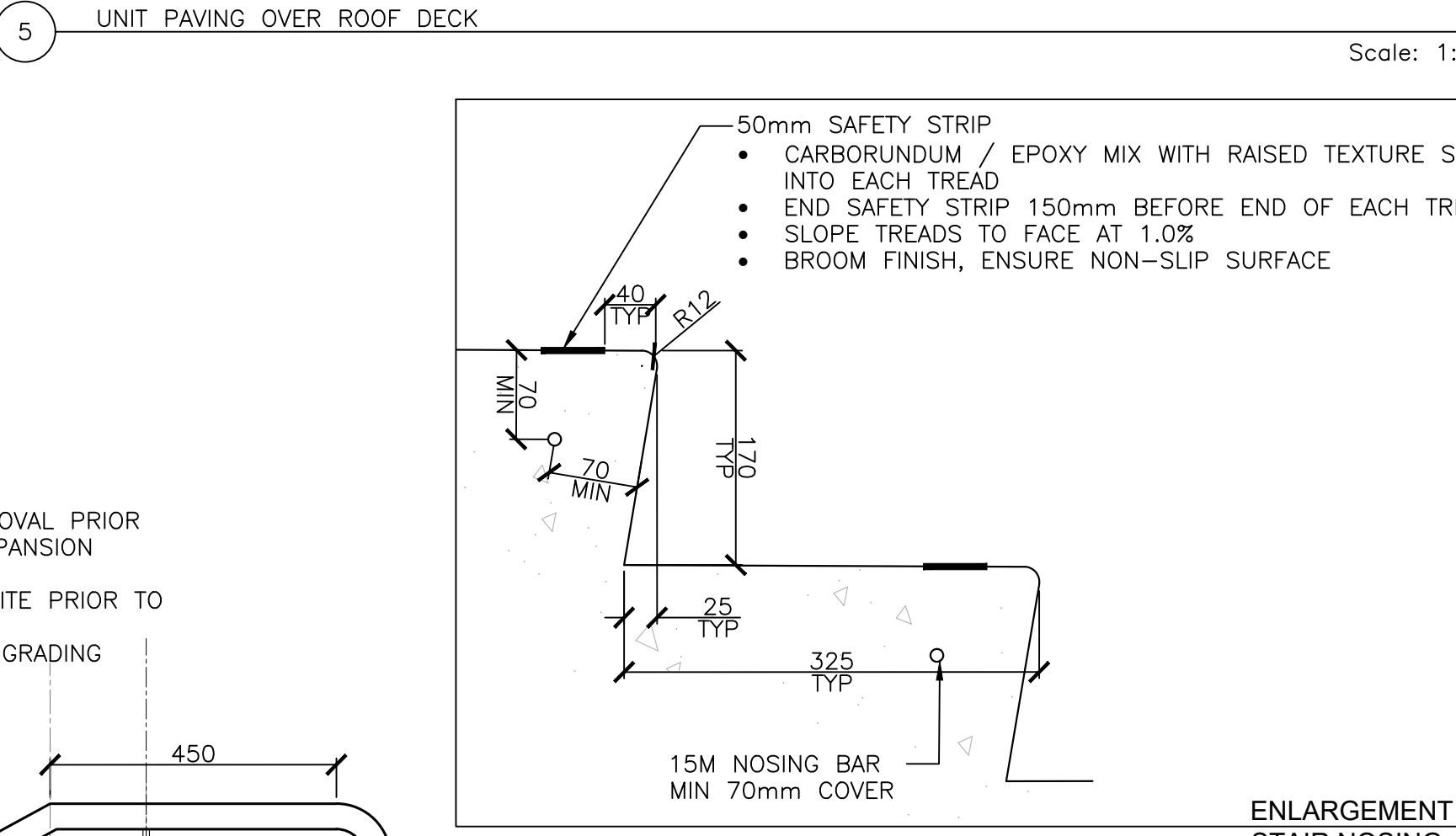
TACTILE WALKING SURFACE INDICATOR (TWSI) AS PER CITY OF OTTAWA STANDARD DETAILS

SECURE POSTS WITH NON-SHRINK GROUT IN CORED HOLE(TYP)

GRANULAR 'A' COMPACTED TO 98% SPMD

COMPACTED FILL OR UNDISTURBED SUBGRADE AS APPROVED BY GEOTECHNICAL ENGINEER

CONTINUOUS 15M REBAR 300mm O.C EACH WAY  
• MAINTAIN MIN 70mm COVER



9 C.I.P. CONCRETE PLANTER WALL (AT BROOKFIELD ROAD) Scale: 1:10

NOTES:  
1. REFER TO DRAWINGS FOR JOINT LAYOUT  
2. SAWCUT WITHIN 48 HOURS OF POUR  
3. NO TOOLED EDGES

NOTES:  
1. REFER TO DRAWINGS FOR JOINT LAYOUT  
2. ALL STEEL DOWELS TO BE EPOXY - COATED  
3. NO TOOLED EDGES

PRODUCT INFO:  
1. Precast Concrete Pavers, by Best Way Stone, or approved equal  
1.1. Product: Manhattan Plank  
1.2. Size: Random unit sizes 80mm depth  
1.3. Colour: 30% Glacier Creek, 70% Grey Mix (Mixed Random and throughout)  
1.4. Pattern: Linear pattern, alternate 2 rows slim, 1 row large (to match Phase 1 pattern)

2 18.01.2023 RE-ISSUED FOR SPA

1 24.06.2022 ISSUED FOR SPA

no. date revision

It is the responsibility of the appropriate contractor to check and verify all dimensions on site and report all errors and/or omissions to the architect.

All contractors must comply with all pertinent codes and by-laws.

Do not scale drawings.

This drawing may not be used for construction until signed.

Copyright reserved.

Landscape Architecture  
Urban Design  
Recreation and Park  
Planning  
Environmental Planning  
Arboret

CSW  
319 McRae Avenue, Suite 502 Ottawa, Ontario K1Z 0B9  
T: (613) 729-4536

Hobin Architecture Incorporated  
63 Pamela Street  
Ottawa, Ontario  
Canada K1S 3K7  
T: 613-238-7200  
F: 613-235-2005  
E: email@hobinarc.com  
hobinarc.com

HOBIN ARCHITECTURE

project  
BROOKFIELD RESIDENCE APARTMENT BUILDING  
770 BROOKFIELD ROAD, OTTAWA

drawing title  
PHASE 2 LANDSCAPE DETAILS

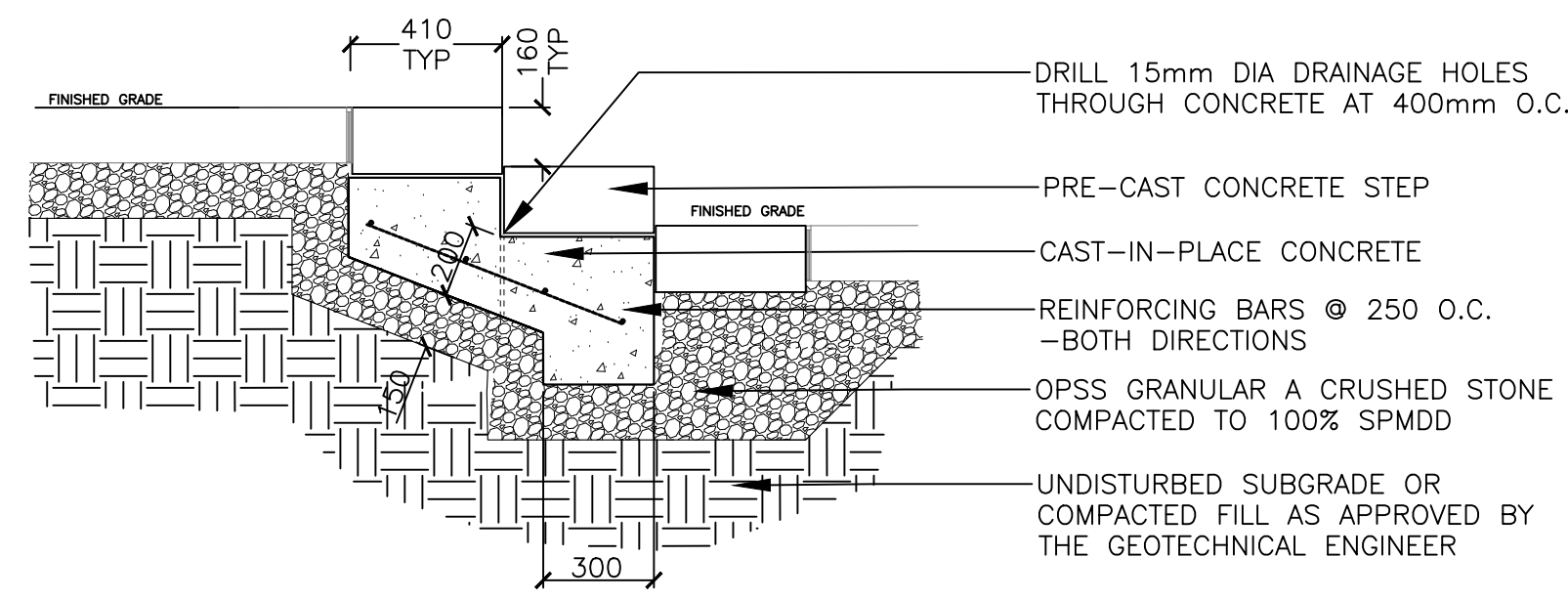
drawn SE date JUNE 2022 scale AS SHOWN

project 1964-02 drawing no. L2.0

ASSOCIATION OF LANDSCAPE ARCHITECTS  
MEMBER  
DPA  
D07-12-22-0109

# 18830

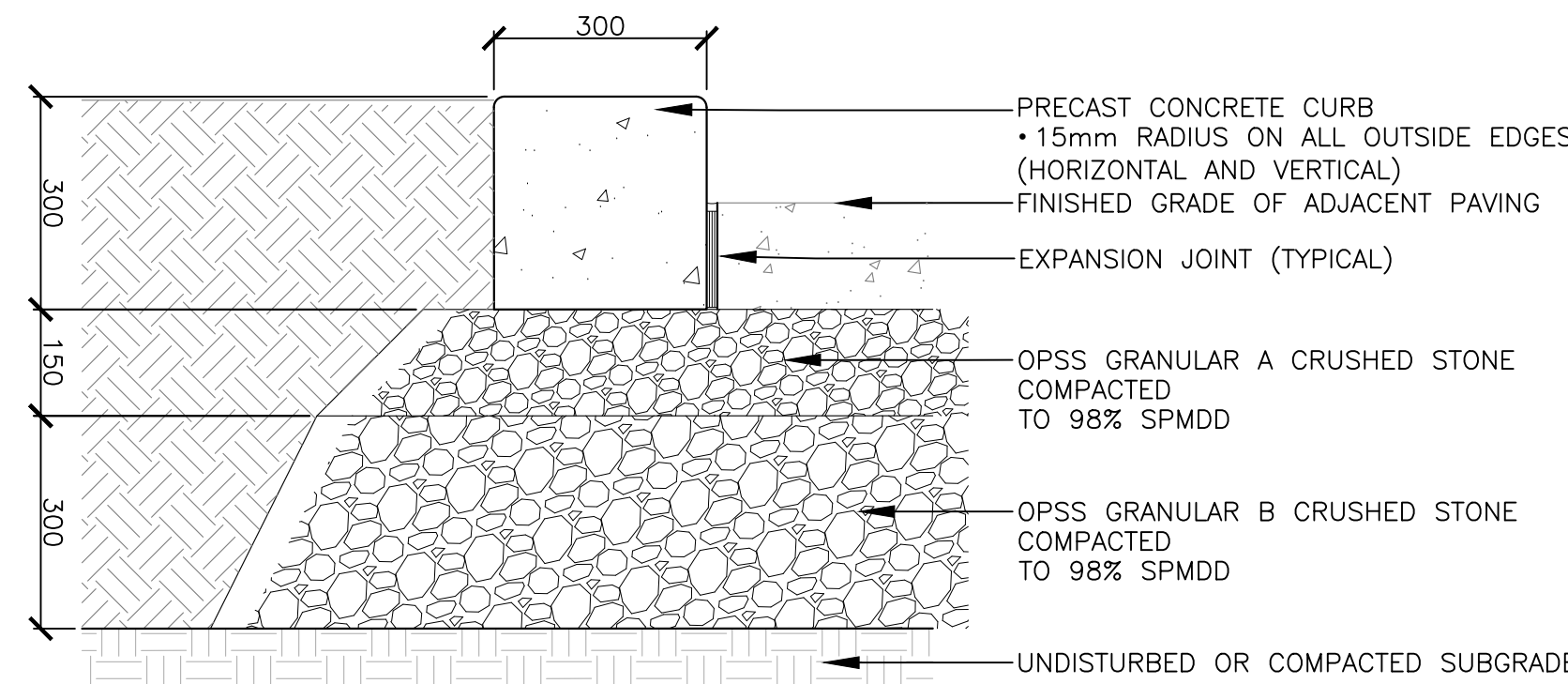




NOTES:  
 -GRANULAR BASE TO BE INSPECTED AND APPROVED BY GEOTECHNICAL ENG.  
 -ALL REINFORCING IN STAIRS TO BE 15M EPOXY-COATED  
 -MAINTAIN 70mm COVER OVER REINFORCING IN CONCRETE  
 -SECURE STEPS TO CONCRETE SLAB WITH MASONRY ADHESIVE

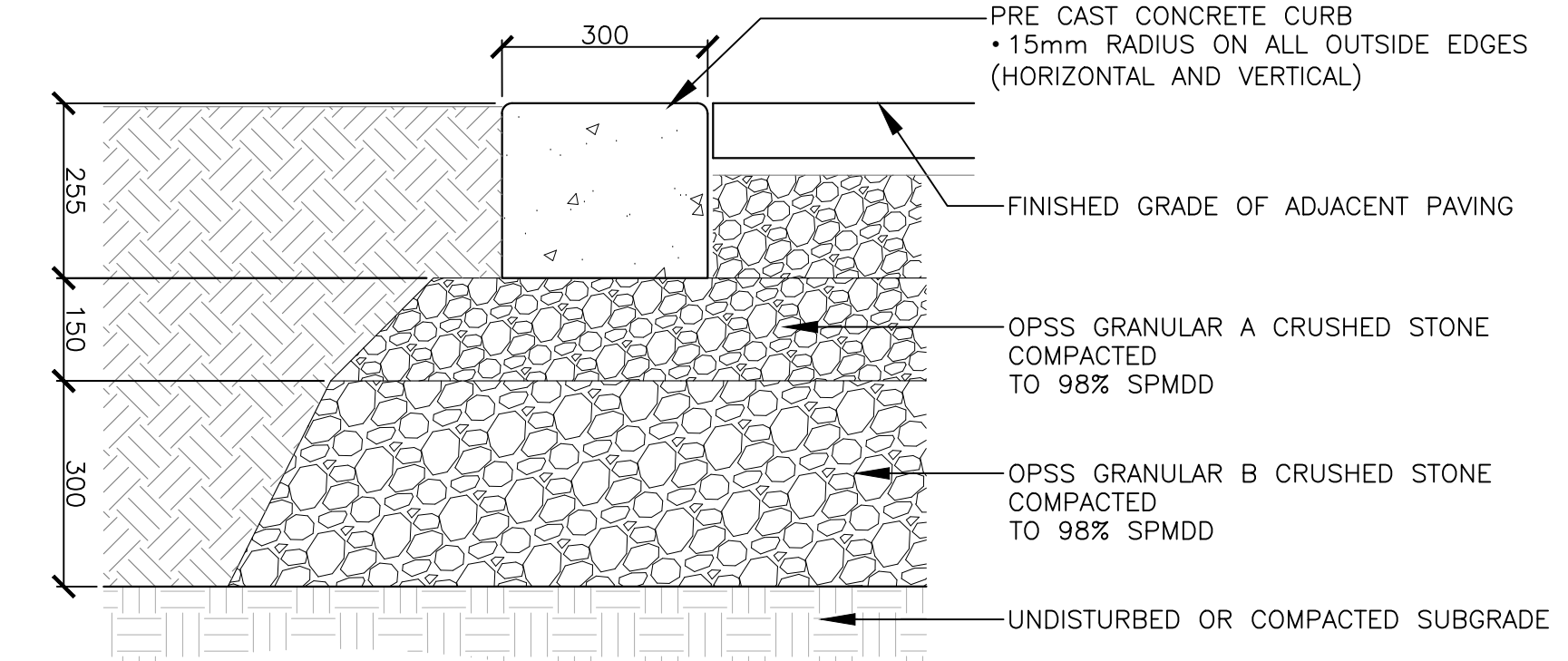
PRODUCT INFO:  
 1. Precast Concrete Steps, by Permacon, or approved equal  
 1.1. Product: Mega Melville Step  
 1.2. Size: 180mm x 406mm x 1219mm  
 1.3. Colour: Shaded Grey

1 PRECAST CONCRETE STEPS Scale: 1:10



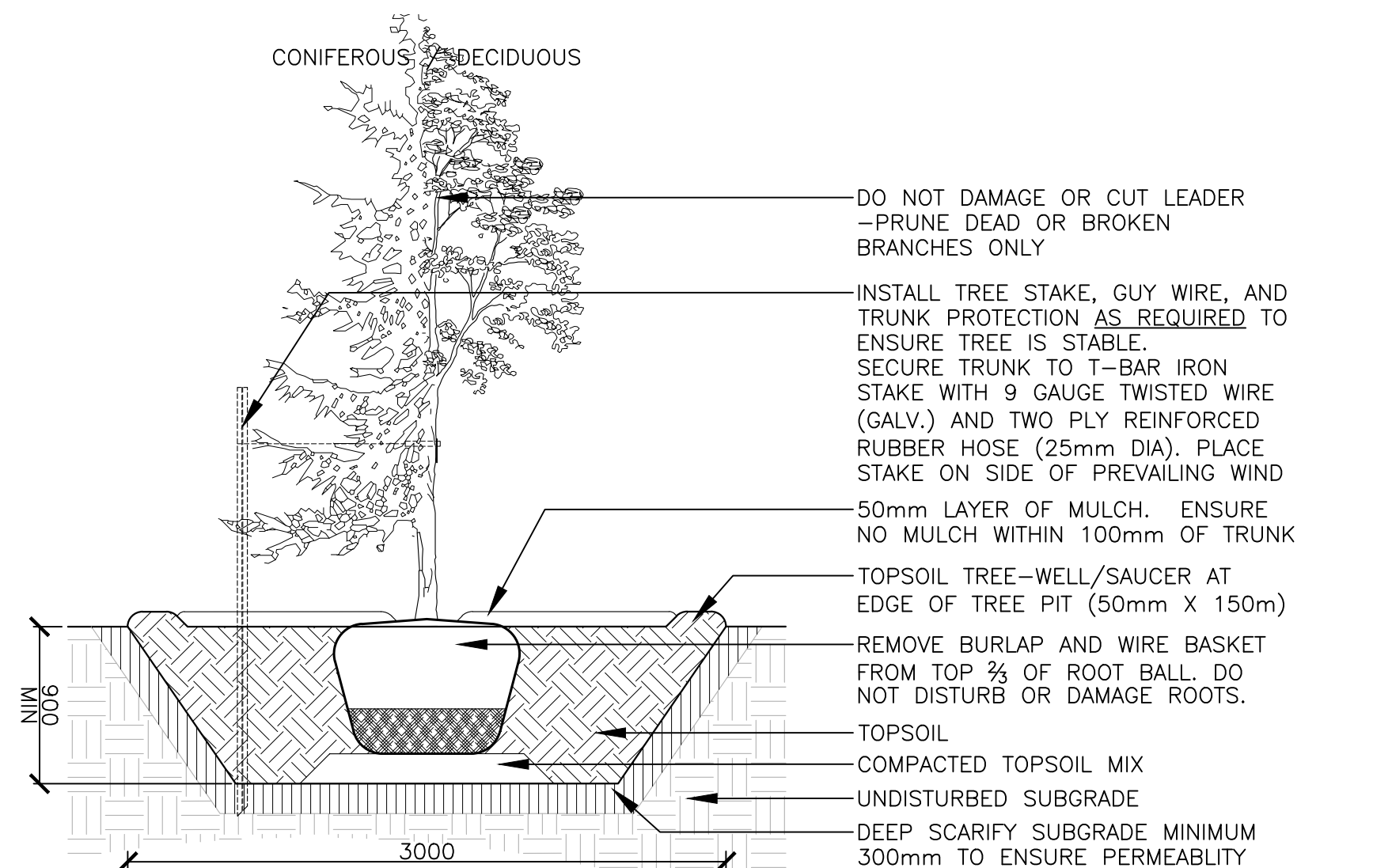
NOTES:  
 • EXCAVATION AND SUBGRADE CONDITION TO BE REVIEWED BY GEOTECHNICAL ENGINEER

5 LANDSCAPE CURB Scale: 1:30



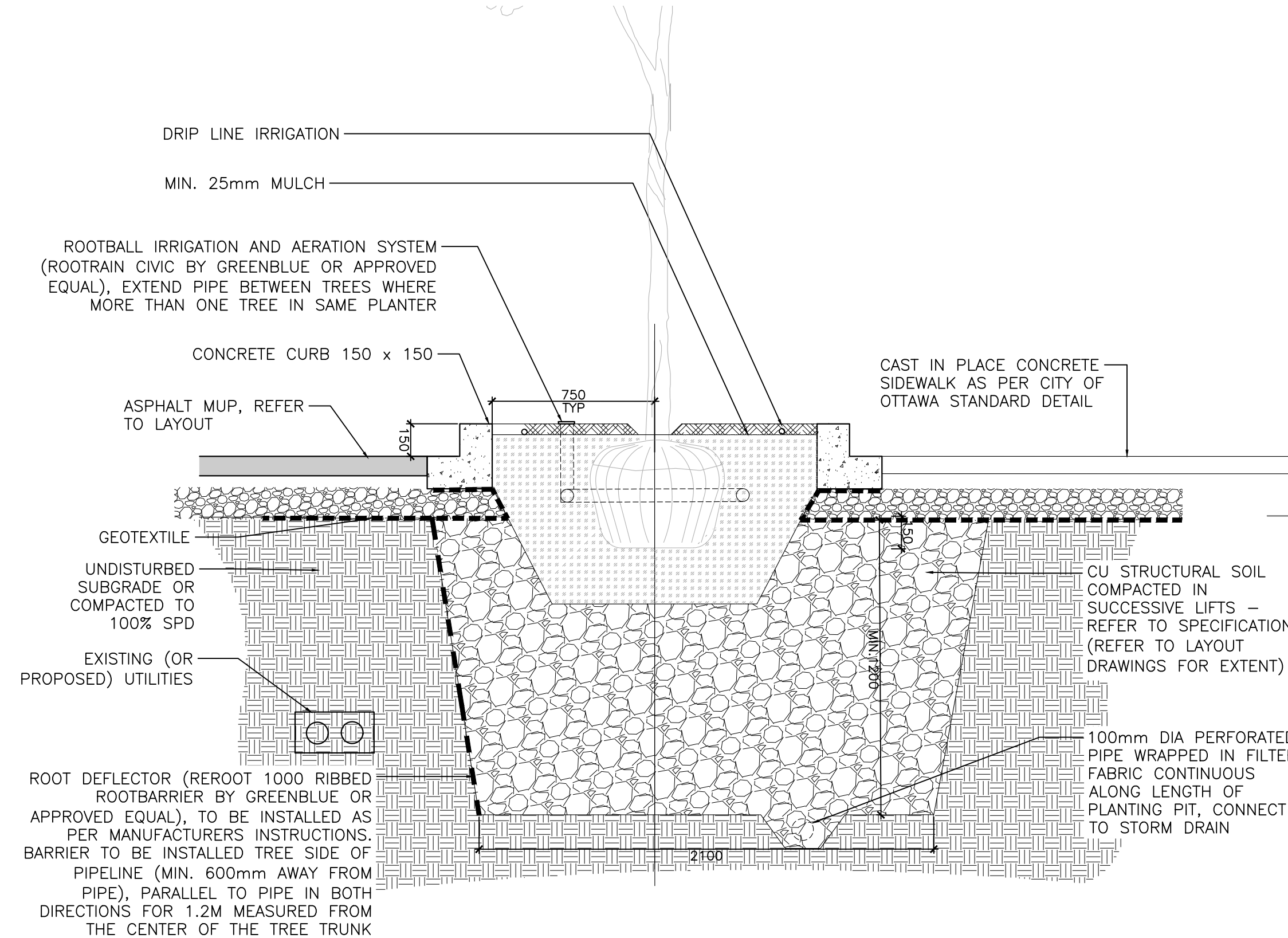
NOTES:  
 • EXCAVATION AND SUBGRADE CONDITION TO BE REVIEWED BY GEOTECHNICAL ENGINEER

6 FLUSH LANDSCAPE CURB Scale: 1:30

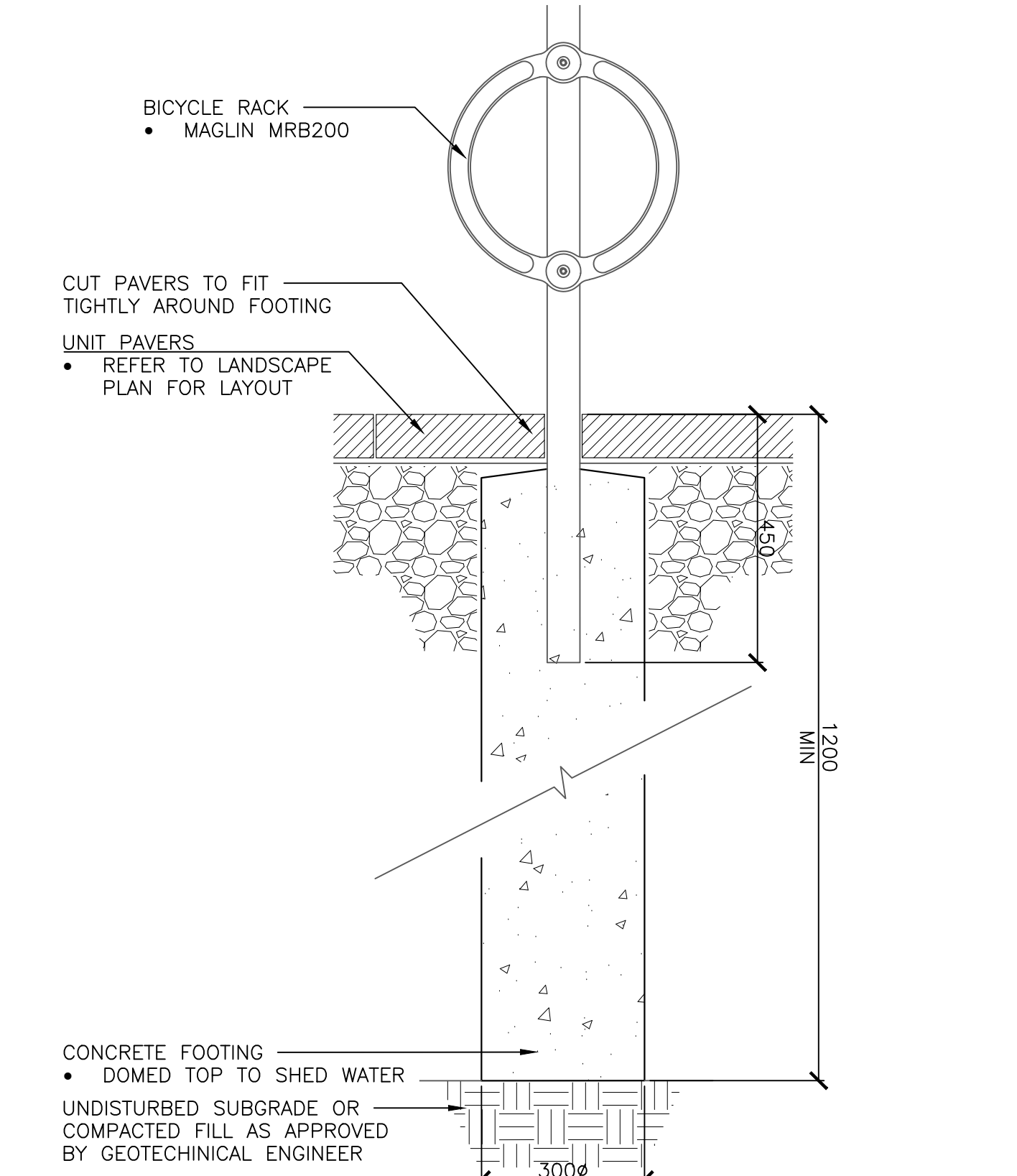


NOTES:  
 • TREE STAKES ARE GENERALLY ARE TO BE USED FOR CONDITIONS WHERE THE INSTALLED TREE IS UNSTABLE AND/OR BECOMES UNSTABLE  
 • ALLOW 10mm TO 25mm SLACK ON GUY WIRE SUPPORT FOR TREE  
 • TOP OF ROOT BALL TO RETAIN SAME ELEVATION AS GROWING CONDITIONS  
 • REMOVE STAKES ONE YEAR AFTER INSTALL  
 • INSTALL STAKE BEYOND EDGE OF ROOT BALL

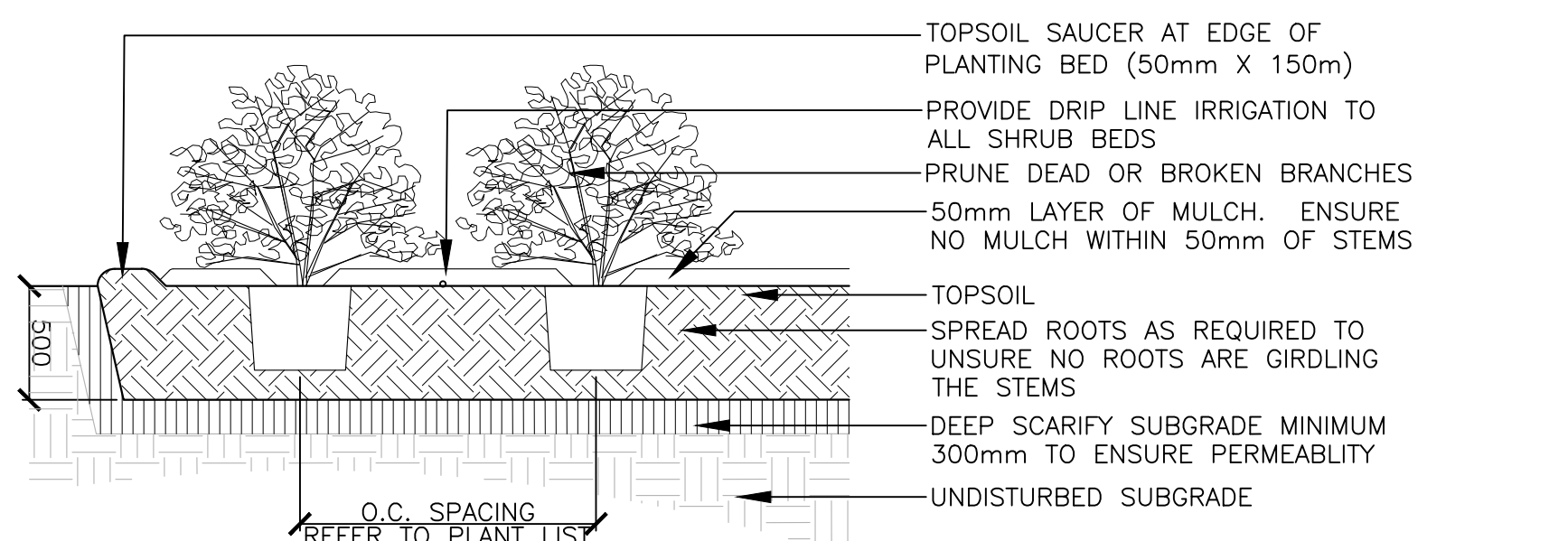
2 TREE PLANTING Scale: 1:30



7 TREE PLANTING IN STRUCTURAL SOIL Scale: 1:20

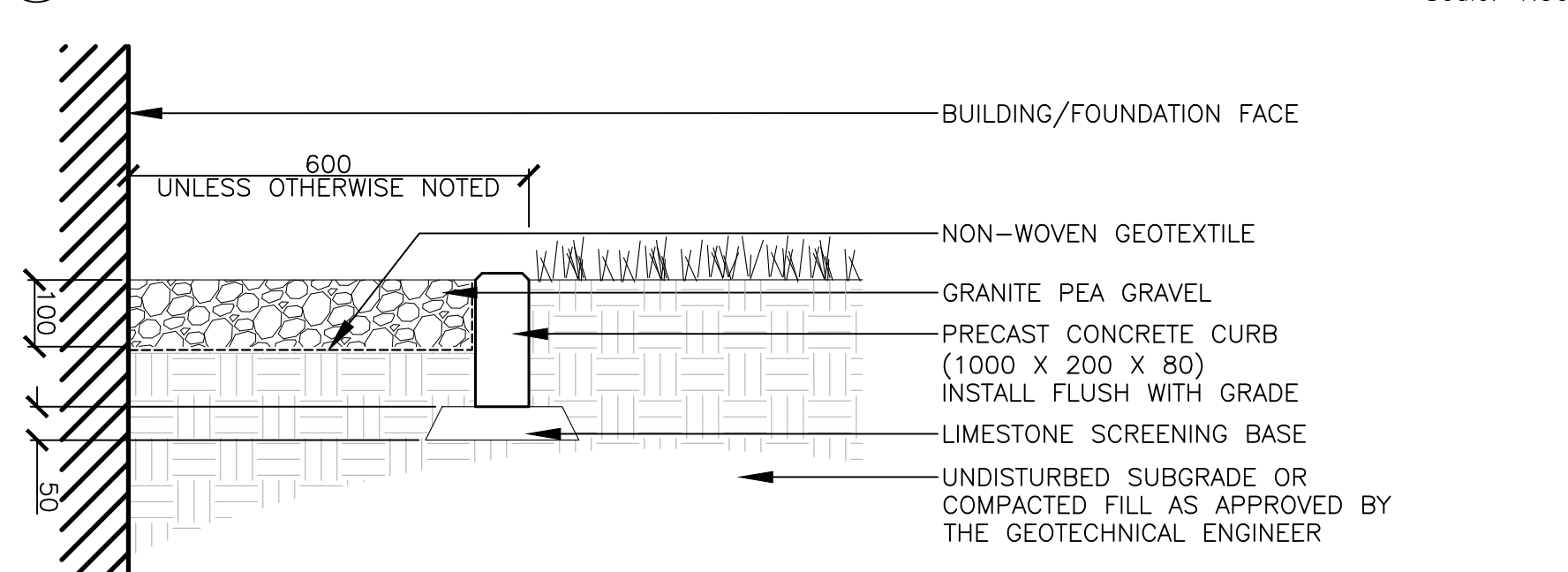


8 BICYCLE RING Scale: 1:10

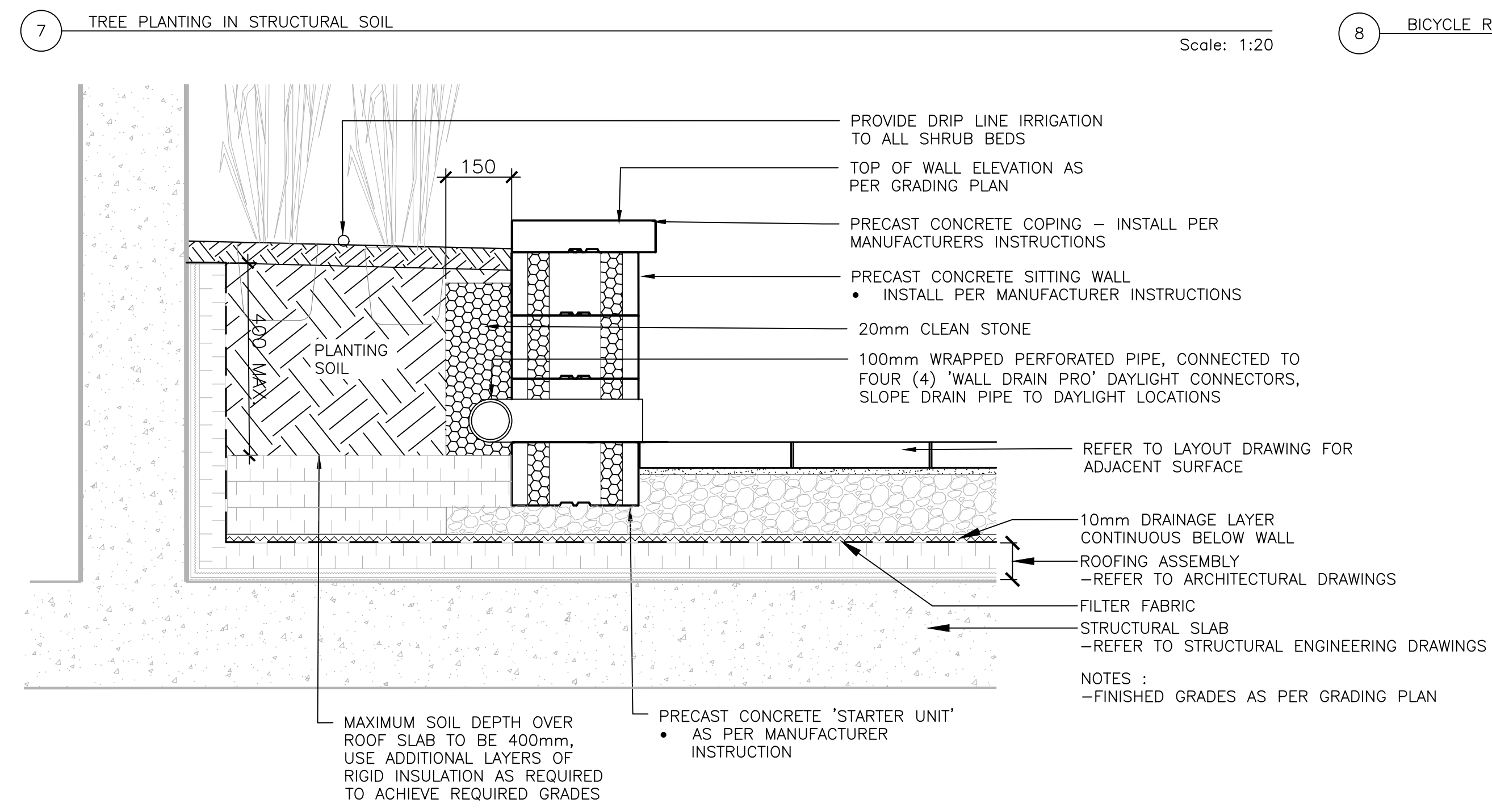


NOTES:  
 • TOP OF ROOT BALL TO RETAIN SAME ELEVATION AS GROWING CONDITIONS

3 SHRUB PLANTING Scale: 1:30



4 MAINTENANCE EDGE Scale: 1:10



9 PRE-CAST CONCRETE PLANTER WALL Scale: 1:10

NOTES:  
 • ALL VERTICAL WALL JOINTS TO BE STAGGERED  
 • ALL CORNERS TO BE OVERLAPPED (NO MITRE CUTS)  
 • SECURE ALL WALL UNITS WITH MASONRY ADHESIVE

PRODUCT INFO:  
 1. Precast Walls, by Oaks Landscape Products, or approved equal  
 1.1. Product: Nueva - 150 Wall units  
 1.2. Size: Width of wall shall be 300mm  
 1.3. Colour: Greyfield  
 2. Precast Coping, by Oaks Landscape Products, or approved equal  
 2.1. Product: Nueva Coping Unit  
 2.2. Size: 600 x 75 x 340  
 2.3. Colour: Marble Grey  
 3. Wall Drain Pro Drainage pipe, by Great North Hardscape, or approved equal  
 3.1. Product: Wall Drain Pro  
 3.2. Size: 150mm height x 45mm width  
 3.3. Colour: Grey

no.	date	revision
2	18-01-2023	RE-ISSUED FOR SPA
1	24.06.2022	ISSUED FOR SPA

It is the responsibility of the appropriate contractor to check and verify all dimensions on site and report all errors and/or omissions to the architect.

All contractors must comply with all pertinent codes and by-laws.

Do not scale drawings.

This drawing may not be used for construction until signed.

Copyright reserved.

**CSW**  
 Landscape Architecture  
 Urban Design  
 Recreation and Park Planning  
 Environmental Planning  
 Arborist  
 319 McRae Avenue, Suite 502 Ottawa, Ontario K1Z 0B9  
 T: (613) 729-4536

**Hobin Architecture Incorporated**  
 63 Pamela Street  
 Ottawa, Ontario  
 Canada K1S 3K7  
 T: 613-238-7200  
 F: 613-235-2005  
 E: email@hobinarc.com  
 hobinarc.com

project  
**BROOKFIELD RESIDENCE**  
 APARTMENT BUILDING  
 770 BROOKFIELD ROAD, OTTAWA

drawing title  
**PHASE 2**  
 LANDSCAPE DETAILS

drawn	date	scale
SE	JUNE 2022	AS SHOWN

project  
 1964-02  
 drawing no.

**L2.1**

