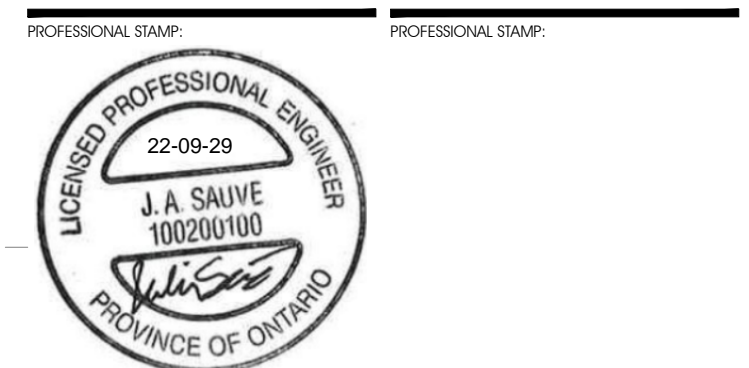


| NUMBER | REVISION | DATE (MM/DD/YYYY) |
|--------|---------------------------------------|--------------------|
| 1 | ISSUED FOR SITE PLAN CONTROL - REV. 3 | SEPTEMBER 29, 2022 |
| 2 | ISSUED FOR 66% REVIEW | JULY 15, 2022 |
| 3 | ISSUED FOR SITE PLAN CONTROL - REV. 2 | JUNE 7, 2022 |
| 4 | ISSUED FOR SITE PLAN APPROVAL | DECEMBER 16, 2021 |



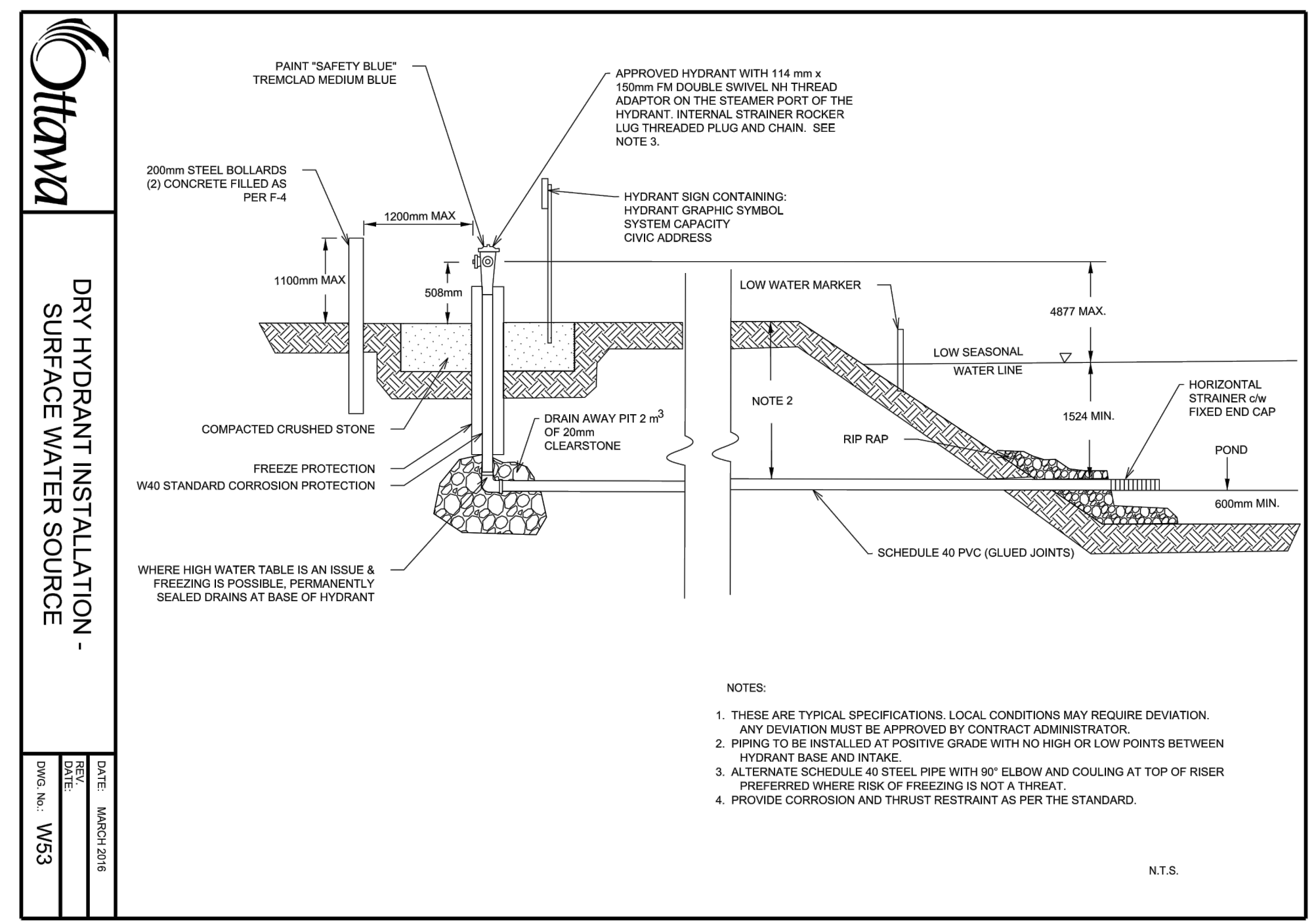
FASTFRATE OTTAWA WAREHOUSE AND DISTRIBUTION FACILITY

SCALE: NONE

SOMME ST, OTTAWA, ON

| | |
|-------------------|--|
| PROJECT TITLE: | FASTFRATE OTTAWA WAREHOUSE AND DISTRIBUTION FACILITY |
| SCALE: | NONE |
| DRAWING TITLE: | DETAILS |
| DRAWN BY: | D.CANN |
| DATE: | |
| REVIEWED BY: | J.SAUVÉ |
| APPROVED BY: | |
| PRINT DATE: | |
| ISSUED DATE: | NOVEMBER 26, 2021 |
| CLIENT PROJECT #: | |
| DRAWING NUMBER: | C015 |
| REVISION NUMBER: | |
| PROJECT #: | A001083 |

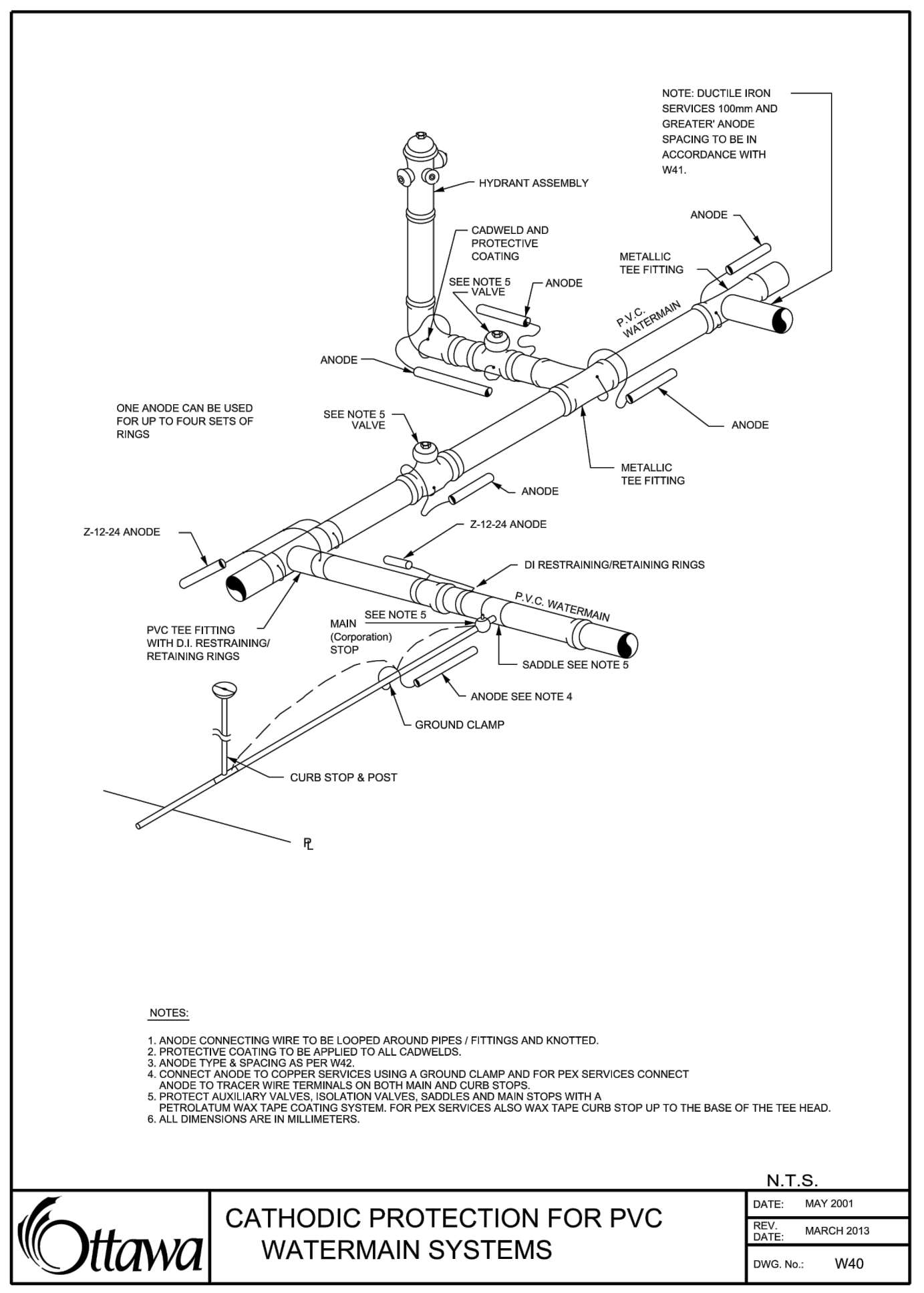
DO NOT SCALE THE DRAWINGS. USE DIMENSIONS ONLY. THE CONTRACTOR IS RESPONSIBLE FOR VERIFYING ALL DIMENSIONS AND CARRYING THE BURDEN OF ANY DISCREPANCIES BEFORE CONSTRUCTION COMMENCES. THE DRAWINGS TO BE READ IN CONJUNCTION WITH ALL STRUCTURAL, MECHANICAL, ELECTRICAL, CIVIL AND OTHER CONSULTANT DRAWINGS. NO DRAWING SHALL BE USED FOR CONSTRUCTION PURPOSES UNLESS SOLED BY THE ARCHITECT. COPYRIGHT RESERVED. ALL PARTS OF THIS DRAWING ARE THE EXCLUSIVE PROPERTY OF THE ARCHITECT AND SHALL NOT BE REPRODUCED WITHOUT THE EXPRESSED PERMISSION FROM THE ARCHITECT.



Ottawa

DRY HYDRANT INSTALLATION - SURFACE WATER SOURCE

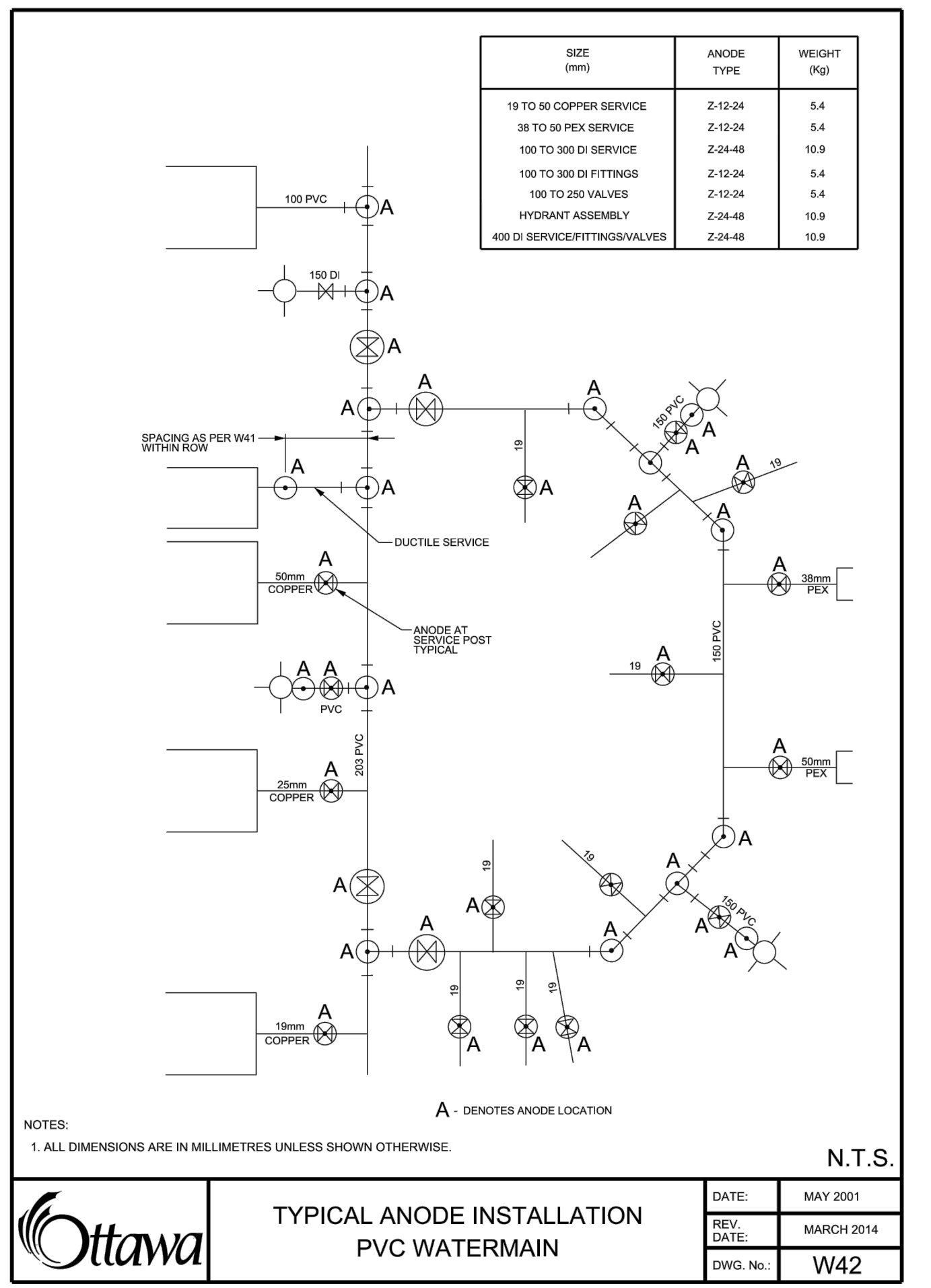
DATE: MARCH 2014
REV. DATE: MARCH 2014
DWG. No.: W53



Ottawa

CATHODIC PROTECTION FOR PVC WATERMAIN SYSTEMS

DATE: MAY 2001
REV. DATE: MARCH 2013
DWG. No.: W40



Ottawa

TYPICAL ANODE INSTALLATION PVC WATERMAIN

DATE: MAY 2001
REV. DATE: MARCH 2014
DWG. No.: W42

APPROVED
By Adam Brown at 9:40 am, Feb 07, 2023

Adam Brown

ADAM BROWN
MANAGER, DEVELOPMENT REVIEW - RURAL PLANNING, REAL ESTATE & ECONOMIC DEVELOPMENT DEPARTMENT, CITY OF OTTAWA

C:\CIM+PLUS\CIM+AC\10\0101_PROJECTS\AA\AA001\000\AA01\499\AA01\083_FASTFRATE WAREHOUSE DEVELOPMENT\400\460_CIVIL