

RECORD OF REVISIONS

| NO. | REVISION | DATE (MM/DD/YYYY) |
|-----|-------------------------------------|--------------------|
| 1 | ISSUED FOR SITE PLAN CONTROL REV. 3 | SEPTEMBER 29, 2022 |
| 2 | ISSUED FOR 60% REVIEW | JULY 15, 2022 |
| 3 | ISSUED FOR SITE PLAN CONTROL REV. 2 | JUNE 7, 2022 |
| 4 | ISSUED FOR SITE PLAN APPROVAL | DECEMBER 16, 2021 |

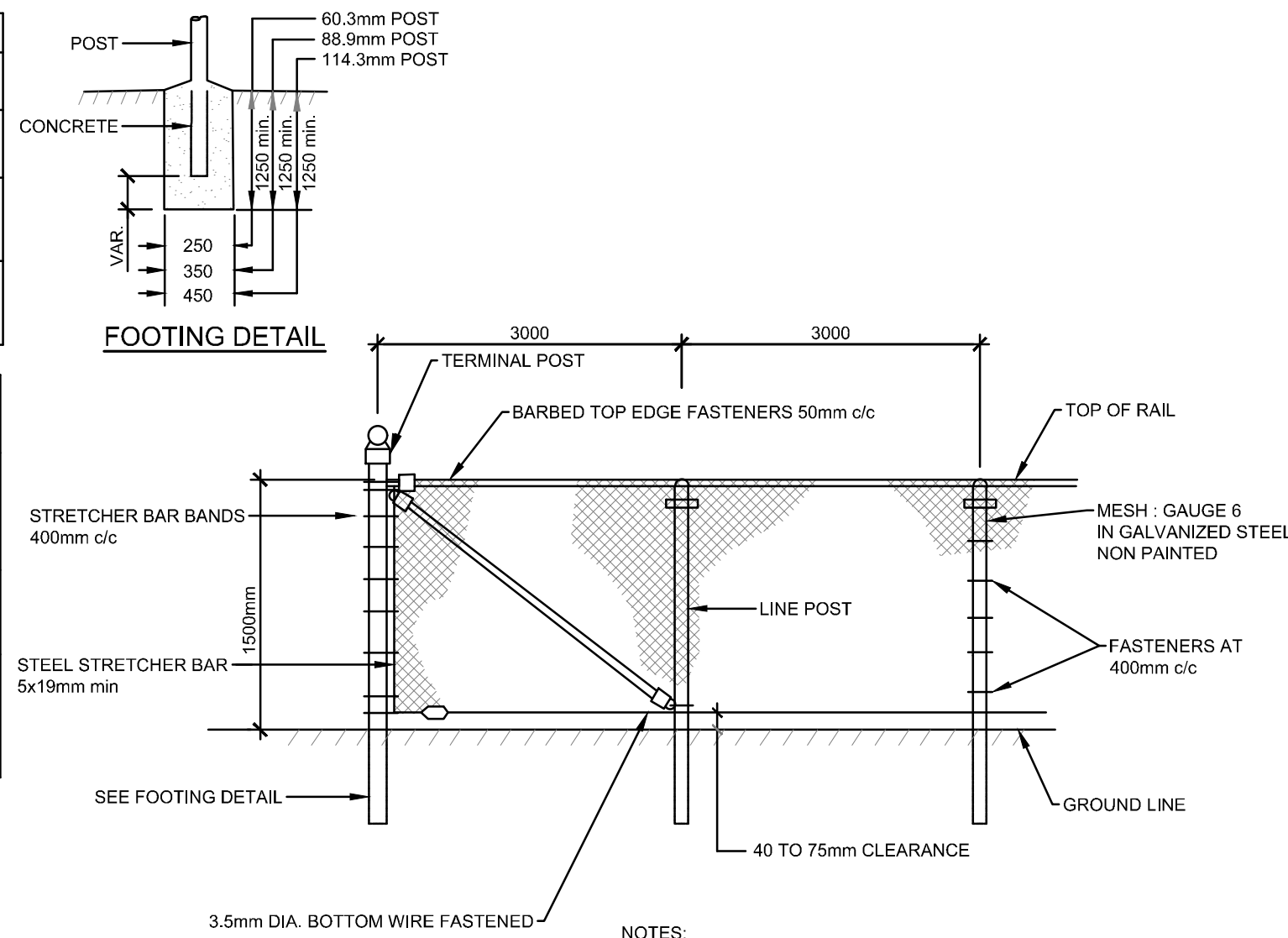
POST DETAILS

| POST TYPE | OUTSIDE DIA. (mm) | POST LENGTH | | SLEEVES |
|--------------------------------|-------------------|--------------|---------------------|---------|
| | | STANDARD (m) | RETAINING WALLS (m) | |
| LINE POST | 60.3 | 2.6 | 2.0 | 88.9 |
| END, CORNER, OR STRAINING POST | 88.9 | 2.9 | 2.3 | 114.3 |

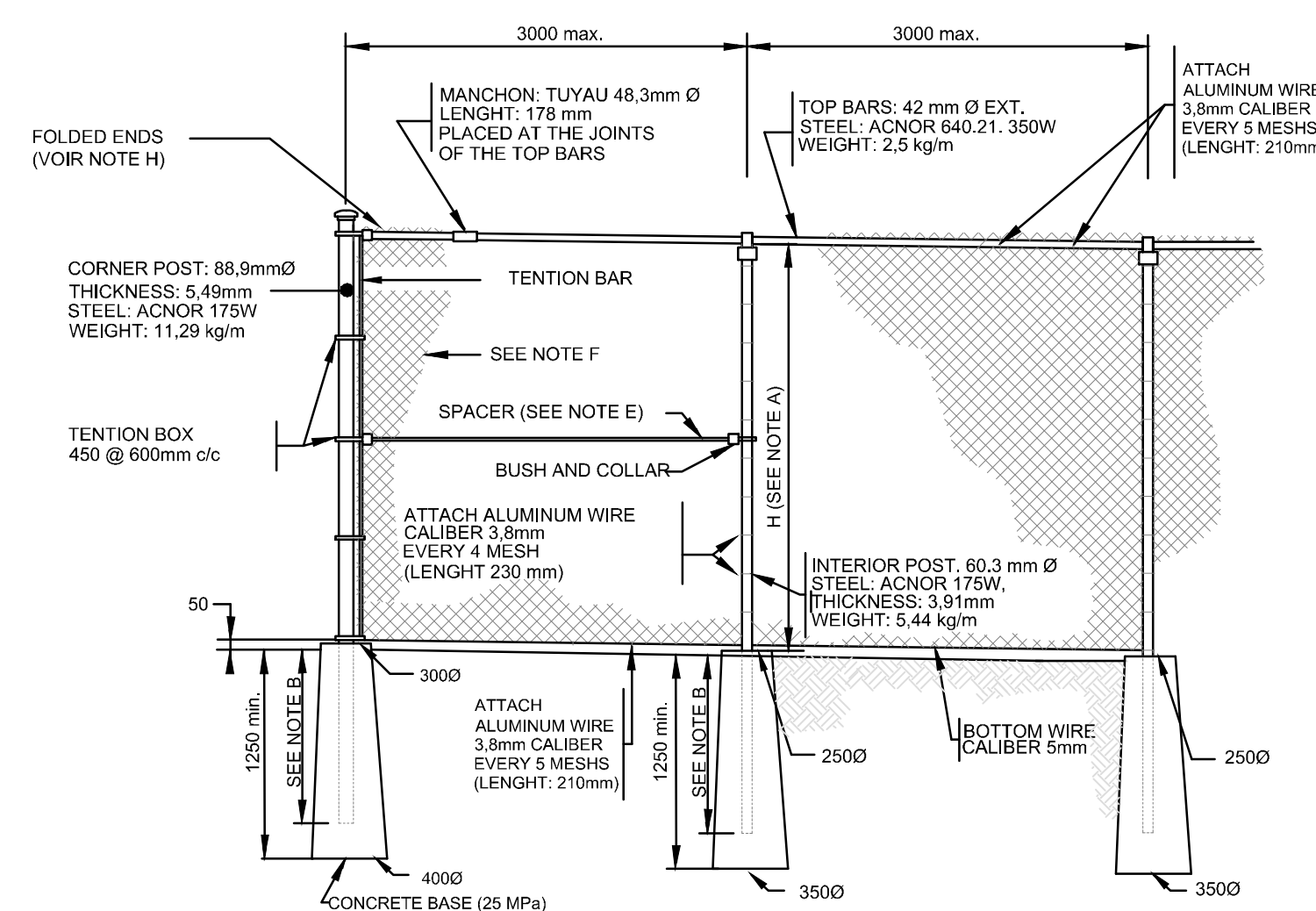
GATE AND GATE POST DETAILS

| GATE TYPE AND MAX. OPENING (m) | FRAME MEMBER REINFORC. MIN. OUT. DIA. (mm) | POST DIA. MIN. OD (mm) | LENGTH STANDART (m) |
|--|--|------------------------|---------------------|
| SINGLE SWING 3.0 DOUBLE SWING 6.0 | 42.9 | 88.9 | 2.6 |
| SINGLE SWING 4.5 SINGLE SWING 6.0 DOUBLE SWING 9.0 | 48.3 | 114.3 | 2.9 |

NOTE:
GATE LEAVES GREATER THAN 3.6m IN WIDTH ARE SUPPLIED WITH DIAGONAL BRACES.

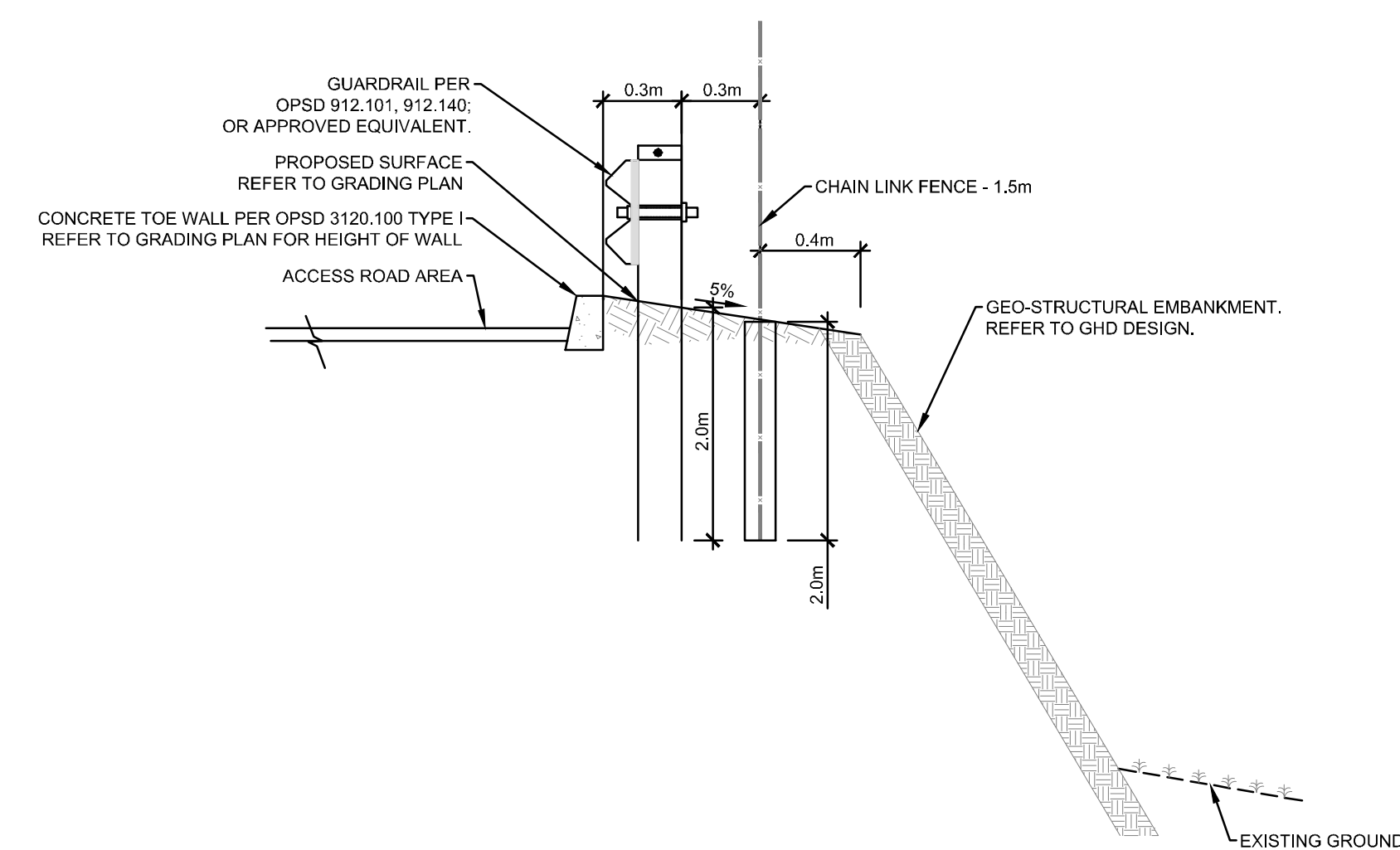


- NOTES:
1. ALL FASTENERS MADE OF GALVANIZED STEEL (NO ALUMINUM)
 2. TOP OF RAIL TYPE "KNUCKLE/KNUCKLE" (NO POINTY EDGE)



- NOTES:
- A. FENCE HEIGHT: 1.5 m.
 - B. LENGTH OF UNDERGROUND POLES: 1.1 m
 - C. CORNER POST: 88.9 mm Ø WITH TWO SPACERS.
 - D. REINFORCING POST: 88.9 mm Ø EVERY 60 m WITH TWO SPACERS.
 - E. SPACERS: 42.2 mm Ø, 350W ACNOR STEEL.
 - F. GALVANIZED GRILLING-008, COVERED WITH VINYL (BLACK) FOR A TOTAL GAUGE #8E-008, CONFORMS TO CAN/CSG-138.1 (TYPE 1, CATEGORY A, MEDIUM STYLE) SPACING OF 50mm X 50mm.
 - G. ALL METAL PARTS ARE GALVANIZED.
 - H. THE ENDS OF THE MESHES AT THE TOP AND BOTTOM MUST BE FOLDED INWARDS SO AS NOT TO HAVE PRICKLY TIPS.
 - I. THE WIRE MESH AND METAL PARTS MUST BE BLACK WITH PVC STRAP "SUPER PRIVACY" (BLACK) IN THE PLACES INDICATED ON THE OVERALL PLAN
 - J. MEASUREMENTS ARE IN MILLIMETRES

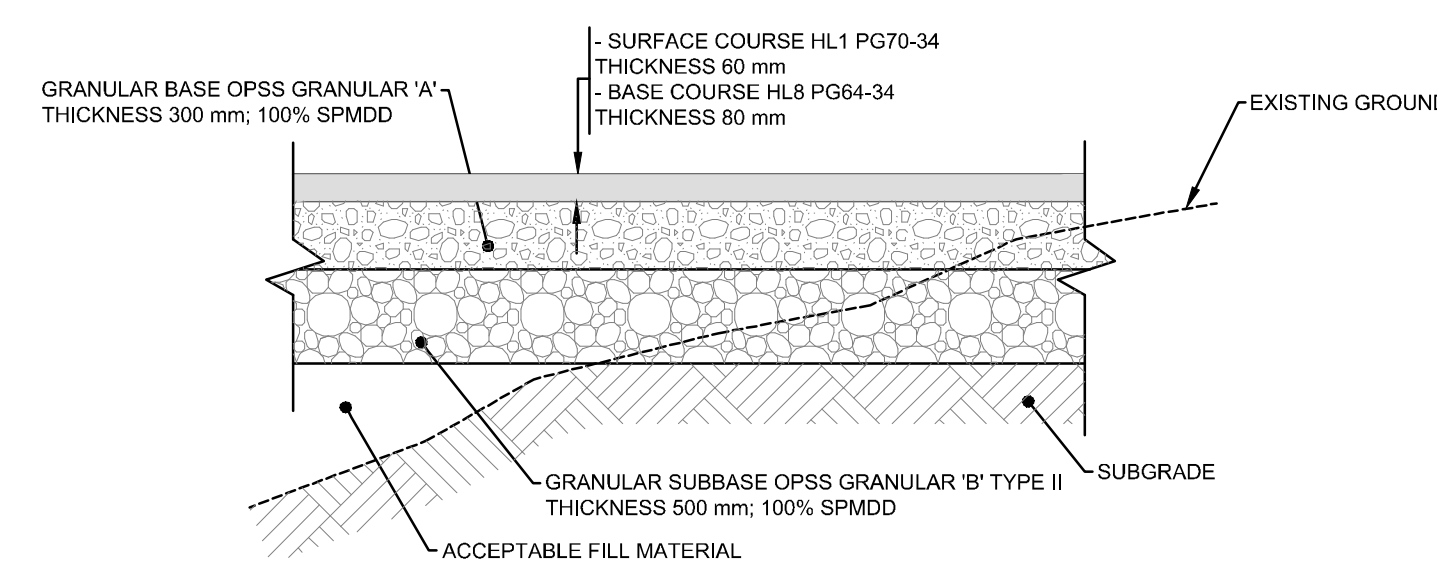
126 CHAIN LINK FENCE
AUCUNE / NTS



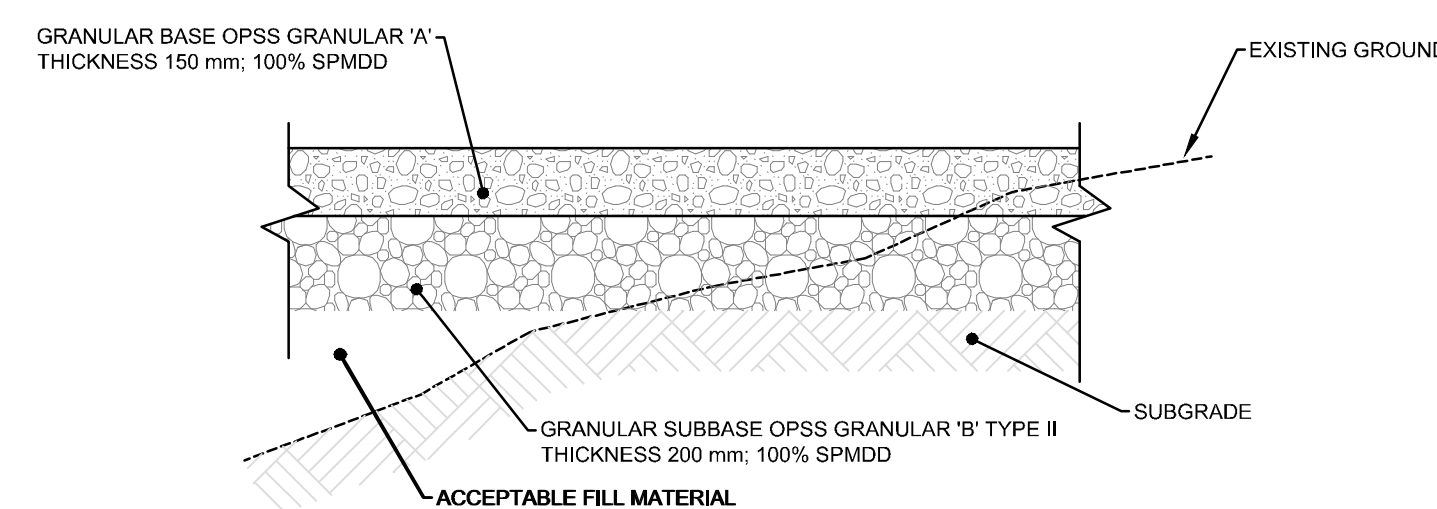
NOTES:
- INSTALLATION OF GUARDRAIL AND FENCE POSTS BY AUGERING STRICTLY PROHIBITED.

138 TYPICAL SECTION - EMBANKMENT, GUARDRAIL AND FENCE
AUCUNE / NTS

141A GALVANIZED METAL MESH FENCE 1.8m HIGH
AUCUNE / NTS



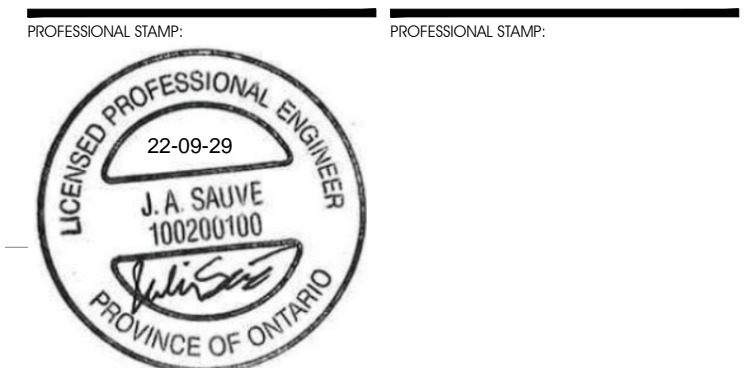
202 TYPICAL SECTION - GRANULAR FOUNDATION AND ASPHALT PAVEMENT (HEAVY DUTY)
AUCUNE / NTS



202A TYPICAL SECTION - GRANULAR PAD
AUCUNE / NTS

APPROVED
By Adam Brown at 9:37 am, Feb 07, 2023

ADAM BROWN
MANAGER, DEVELOPMENT REVIEW - RURAL
PLANNING, REAL ESTATE & ECONOMIC DEVELOPMENT
DEPARTMENT, CITY OF OTTAWA



PROJECT TITLE:
FASTFRATE OTTAWA WAREHOUSE AND DISTRIBUTION FACILITY
SCALE: NONE
SOMME ST, OTTAWA, ON

DETAILS

DRAWN BY: D.CANN DRAWING NUMBER: C011
DATE: J.SAUVÉ
REVIEWED BY: J.SAUVÉ
APPROVED BY: J.SAUVÉ
PRINT DATE: NOVEMBER 26, 2021 REVISION NUMBER:
ISSUED DATE: PROJECT #:
CLIENT PROJECT #: A001083

DO NOT SCALE THE DRAWING. USE DIMENSIONS ONLY. THE CONTRACTOR IS RESPONSIBLE FOR VERIFYING ALL DIMENSIONS AND TYPING. THE ARCHITECT IS NOT RESPONSIBLE FOR ANY CONSTRUCTION ERRORS. THE DRAWING IS TO BE READ IN CONJUNCTION WITH ALL STRUCTURAL, MECHANICAL, ELECTRICAL, CIVIL, AND OTHER CONSULTANT DRAWINGS. THIS DRAWING SHALL NOT BE USED FOR CONSTRUCTION PURPOSES UNLESS SOLELY BY THE ARCHITECT. COPYRIGHT RESERVED. ALL PARTS OF THIS DRAWING ARE THE EXCLUSIVE PROPERTY OF THE ARCHITECT AND SHALL NOT BE REPRODUCED WITHOUT THE EXPRESSED PERMISSION FROM THE ARCHITECT.