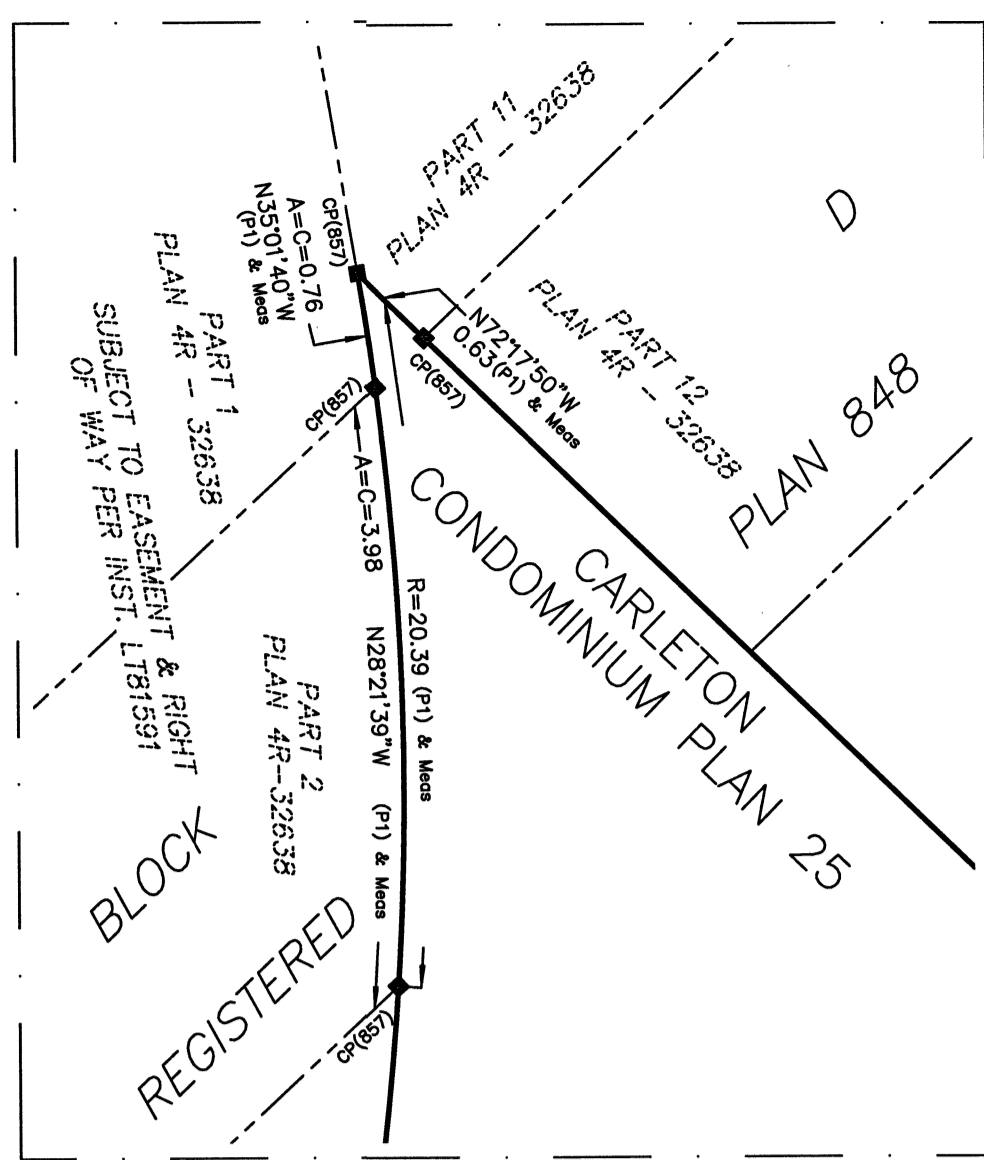


Notes & Legend

- Denotes
- Survey Monument Planted
 - Survey Monument Found
 - SIB Standard Iron Bar
 - SSIB Short Standard Iron Bar
 - IB Iron Bar
 - CP Concrete Pin
 - (W/R) Witness
 - Meas Measured
 - (OU) Origin Unknown
 - (P1) Plan 4R-32638
 - MH-ST Maintenance Hole (Storm)
 - MH-S Maintenance Hole (Sanitary)
 - MH-U Maintenance Hole (Unidentified)
 - UGS Underground Storm Sewer (By Others)
 - UWS Underground Sanitary Sewer (By Others)
 - UGW Underground Water (By Others)
 - UGP Underground Power (By Others)
 - UGB Underground Bell (By Others)
 - UGG Underground Gas (By Others)
 - UGR Underground Rogers (By Others)
 - UGU Underground Unknown (By Others)
 - S Sign
 - CB Catch Basin
 - LS Light Standard
 - FH Fire Hydrant
 - TB Cable Terminal Box
 - MW Monitoring Well
 - D Diameter
 - CLF Chain Link Fence
 - INV Invert
 - T/G Top of Grate
 - TP/Fdn Top of Foundation
 - C/L Centreline
 - RCC Removable Concrete Curb
 - +65.00 Location of Elevations
 - +65.00 Top of Concrete Curb Elevation
 - Property Line
 - Deciduous Tree - The Symbol shown denotes location and trunk diameter only. Size of its root system/overhead canopy may be smaller/larger than the symbol size depicted on this plan.
 - Coniferous Tree - The Symbol shown denotes location and trunk diameter only. Size of its root system/overhead canopy may be smaller/larger than the symbol size depicted on this plan.

Site Benchmark
Between 2041 & 2044 Arrowsmith Drive
(Top of Spindle) Elevation=72.89

DETAIL
Scale 1:50

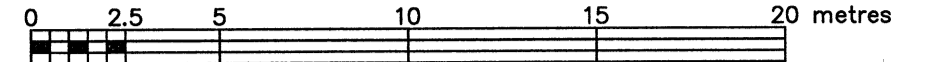


TOPOGRAPHIC PLAN OF SURVEY OF

PART OF BLOCK D
REGISTERED PLAN 848
CITY OF OTTAWA

FARLEY, SMITH & DENIS SURVEYING LTD. 2022

Scale 1: 200



Metric Note

Distances on this plan are in metres and can be converted to feet by dividing by 0.3048.

Bearing Note

Bearings hereon are grid bearings derived from the Can-Net Real Time Network and are referred to the Central Meridian of MTM Zone 9 (76°30' West Longitude) Nad-83 (Original).

Elevation Notes

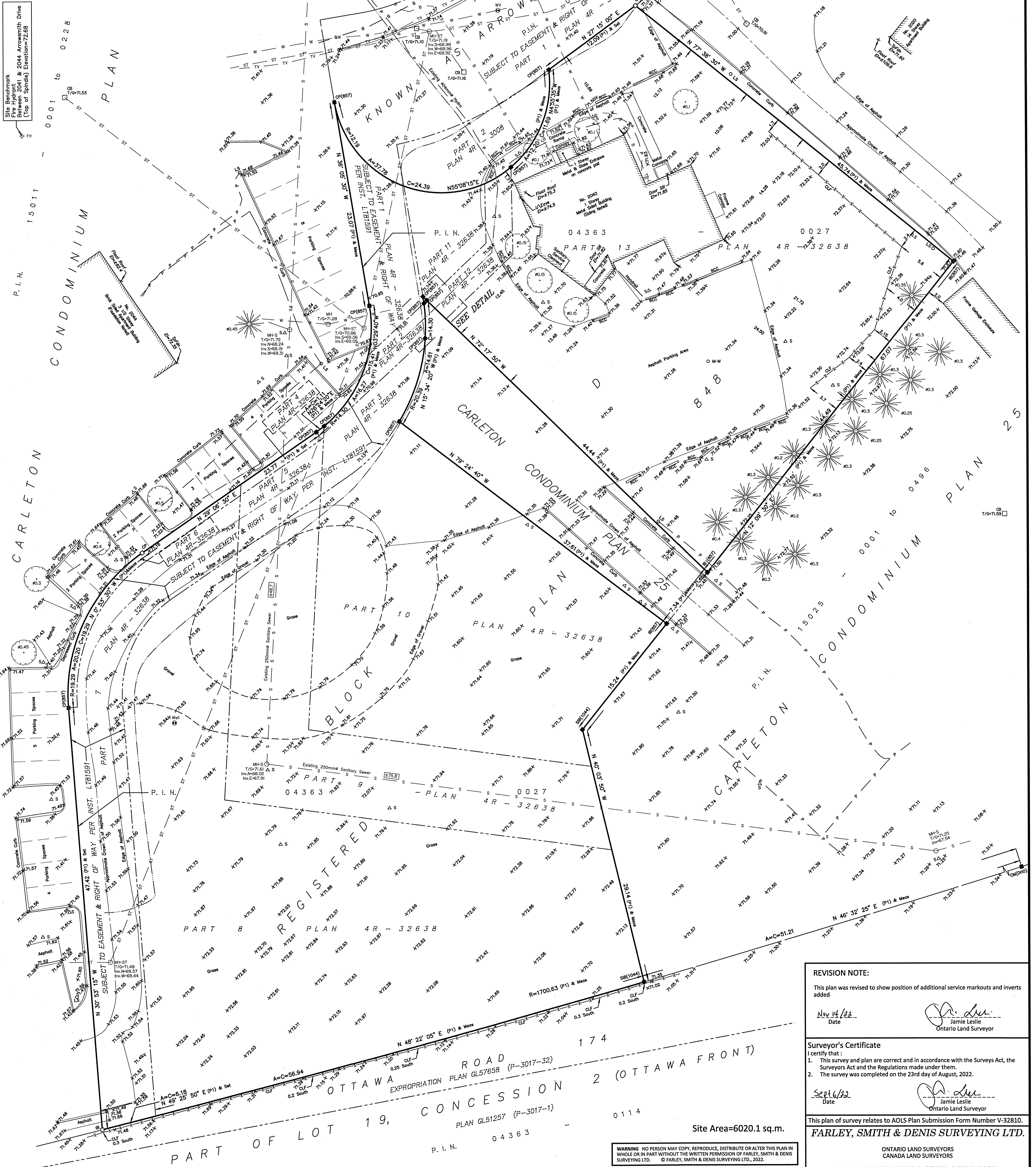
- Elevations shown are geodetic and are referred to Geodetic Datum CGVD-1928 :1978. (Monument No. 199434761)
- It is the responsibility of the user of this information to verify that the job benchmark has not been altered or disturbed and that its relative elevation and description agrees with the information shown on this drawing.

Utility Notes

- This drawing cannot be accepted as acknowledging all of the utilities and it will be the responsibility of the user to contact the respective utility authorities for confirmation.
- Only visible surface utilities were located.
- Underground utility data derived from markouts by others & City of Ottawa utility sheet reference: E-25-25
- Sanitary and storm sewer grades and inverts were derived from: Field measurement
- A field location of underground plant by the pertinent utility authority is mandatory before any work involving breaking ground, probing, excavating etc.

CARLETON CONDOMINIUM PLAN 25

P. I. N. 15025 - 0001 to 0496



REVISION NOTE:
This plan was revised to show position of additional service markouts and inverts added
Date Nov 14/22
Signature: *Jamie Leslie*
Ontario Land Surveyor

Surveyor's Certificate
I certify that:
1. This survey and plan are correct and in accordance with the Surveys Act, the Surveyors Act and the Regulations made under them.
2. The survey was completed on the 23rd day of August, 2022.
Date Sept 6/22
Signature: *Jamie Leslie*
Ontario Land Surveyor

This plan of survey relates to AOLS Plan Submission Form Number V-32810.
FARLEY, SMITH & DENIS SURVEYING LTD.
ONTARIO LAND SURVEYORS
CANADA LAND SURVEYORS

Unit 275, 30 COLONNADE ROAD, OTTAWA, ONTARIO K2E 7J6
TEL: (613) 727-8226 E-mail: fdsurveys@bellnet.ca

WARNING: NO PERSON MAY COPY, REPRODUCE, DISTRIBUTE OR ALTER THIS PLAN IN WHOLE OR IN PART WITHOUT THE WRITTEN PERMISSION OF FARLEY, SMITH & DENIS SURVEYING LTD.
© FARLEY, SMITH & DENIS SURVEYING LTD., 2022.