

PART OF LOT 16
REGISTERED PLAN 353
PART OF LOT 34
CONCESSION A (RIDEAU FRONT)
GEOGRAPHIC TOWNSHIP OF NEPEAN
CITY OF OTTAWA

FARLEY, SMITH & DENIS SURVEYING LTD. 2021

Scale 1: 250
0 2.5 5 7.5 10 12.5 15 20 25 metres

Metric Note
Distances on this plan are in metres and can be converted to feet by dividing by 0.3048.

Distance Note
Distances shown on this plan are ground distances and can be converted to grid distances by multiplying by the combined scale factor of 0.9993.

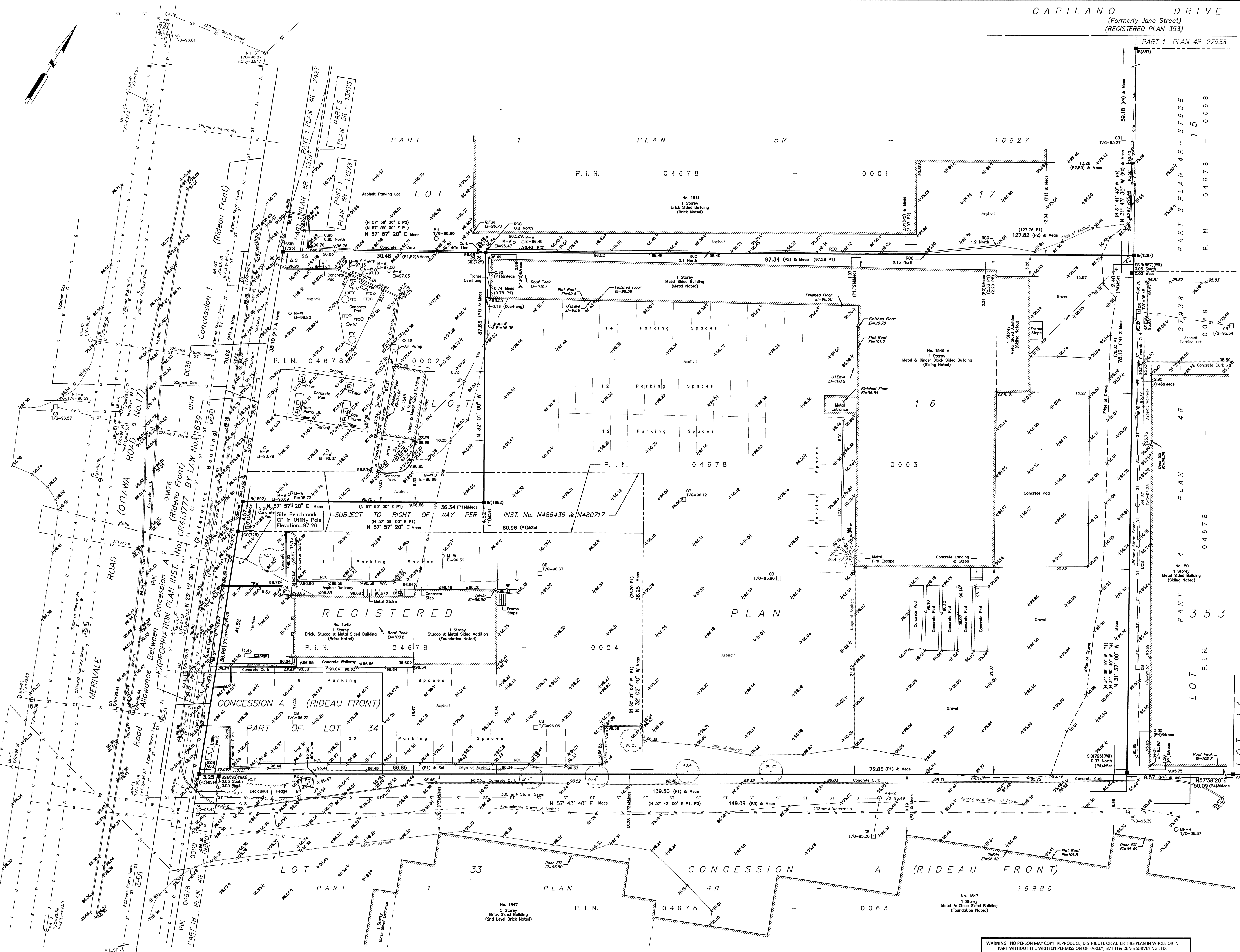
Bearing Note
Bearings hereon are grid bearings derived from the Can-Net Real Time Network and are referred to the Central Meridian of MTM Zone 9 (76°30' West Longitude) Nad-83 (Original).

For bearing comparisons, a rotation of 0°03'00" clockwise was applied to bearings on P1.
For bearing comparisons, a rotation of 0°32'00" counter-clockwise was applied to bearings on P4.

Elevation Notes
1. Elevations shown are geodetic and are referred to Geodetic Datum CGVD-1928 :1978.
2. Elevations derived from Control Monument No. 3702, Index No. 67 having a published elevation of 96.951m.
3. It is the responsibility of the user of this information to verify that the job benchmark has not been altered or disturbed and that its relative elevation and description agrees with the information shown on this drawing.

Utility Notes
1. This drawing cannot be accepted as acknowledging all of the utilities and it will be the responsibility of the user to contact the respective utility authorities for confirmation.
2. Only visible surface utilities were located.
3. Underground utility data derived from City of Ottawa utility sheet reference: L-04-06, L-04-12, 7432, 10151, 10158.
4. Sanitary and storm sewer grades and inverts were compiled from: Field measurement.
5. A field location of underground plant by the pertinent utility authority is mandatory before any work involving breaking ground, probing, excavating etc.

Notes & Legend table with symbols for Survey Monument Planted, Survey Monument Found, Standard Iron Bar, Short Standard Iron Bar, Iron Bar, Cut Cross, Witness, Measured, Plan by (725) dated November 23, 1988, Plan by (SG) revised July 5, 2011, Plan by (SG) dated February 27, 2014, Plan by (857) dated July 21, 2016, Plan by (1287) dated November 4, 1987, Maintenance Hole (Storm), Maintenance Hole (Sanitary), Maintenance Hole (Bell), Maintenance Hole (Water), Maintenance Hole (Hydro), Maintenance Hole (Unidentified), Valve Chamber (Watermain), Undergound Storm Sewer, Undergound Sanitary Sewer, Undergound Water, Undergound Power, Undergound Gas, Undergound Bell, Overhead Wires, Undergound Cable TV, Deciduous Tree, Coniferous Tree, Top of Concrete Curb Elevation/Retaining Walls, Monitoring Well, Vent Pipe, Fuel Tank Filler Cap, Gas Meter, Bollard, Sign, Cable Terminal Box, Hydro Terminal Box, Testing Pit, Invert, Top of Gate, Elevation, Underside of Eave, Top of Foundation, Centreline, Removable Concrete Curb, Timber Retaining Wall, Board Fence, Bottom of Slope.



Surveyor's Certificate
I certify that:
1. This survey and plan are correct and in accordance with the Surveys Act, the Surveyors Act and the Regulations made under them.
2. The survey was completed on the 1st day of October, 2021.

Date: October 4, 2021
Signature: Jamie Leslie
Ontario Land Surveyor

FARLEY, SMITH & DENIS SURVEYING LTD.

Ontario Land Surveyors
CANADA LAND SURVEYORS
Unit 275, 30 COLONNADE ROAD, OTTAWA, ONTARIO K2E 7J6
TEL. (613) 727-8226 E-mail: fdsurvey@belinec.ca

WARNING: NO PERSON MAY COPY, REPRODUCE, DISTRIBUTE OR ALTER THIS PLAN IN WHOLE OR IN PART WITHOUT THE WRITTEN PERMISSION OF FARLEY, SMITH & DENIS SURVEYING LTD.
© FARLEY, SMITH & DENIS SURVEYING LTD., 2021.

File No.: 443-21