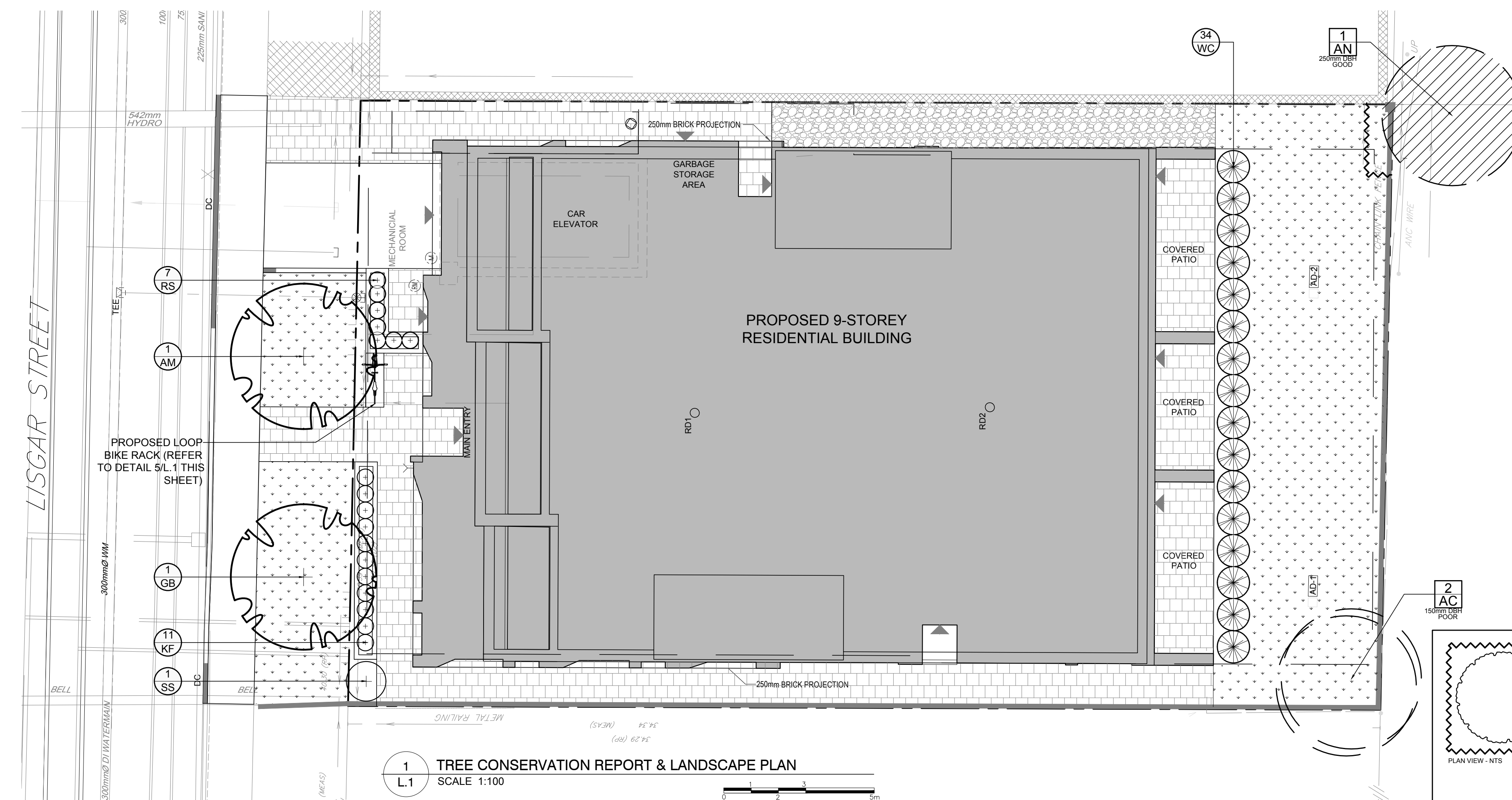


CLIENT:
230 LISGAR STREET INC.

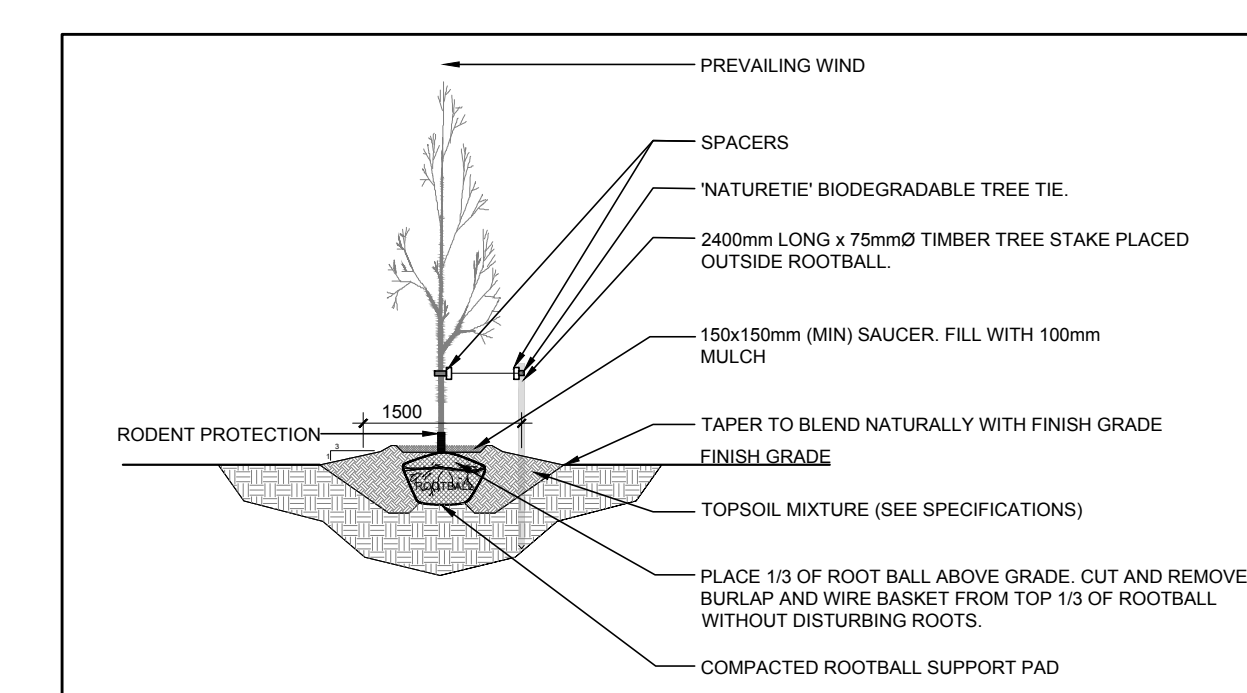
CONSULTANTS
ARCHITECTS
project1 studio
Project1 Studio Incorporated
(613) 844-9939 | info@project1studio.ca

CIVIL ENGINEERS
NOVATECH
Engineers, Planners & Landscape Architects
Suite 200, 240 Michael Cowpland Drive
Ottawa, Ontario, Canada K2M 1P6
Telephone: (613) 254-9643
Facsimile: (613) 254-5867
Website: www.novatech-eng.com

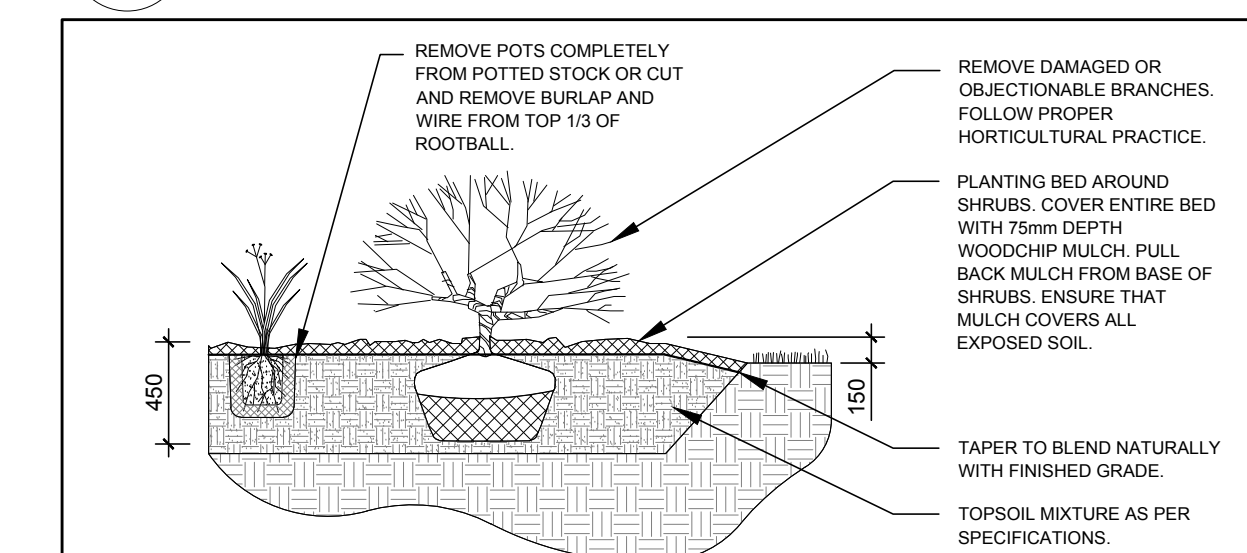
- LEGEND**
- PROPOSED DECIDUOUS TREE
 - PROPOSED SHRUBS / PERENNIALS
 - PROPOSED RIVERSTONE
 - PROPOSED SOD
 - PROPOSED PRECAST CONCRETE PAVERS
 - TREE PROTECTION FENCE
 - PROPOSED LOOP BIKE RACK
 - EXISTING TREE TO REMAIN
 - EXISTING TREE TO BE REMOVED



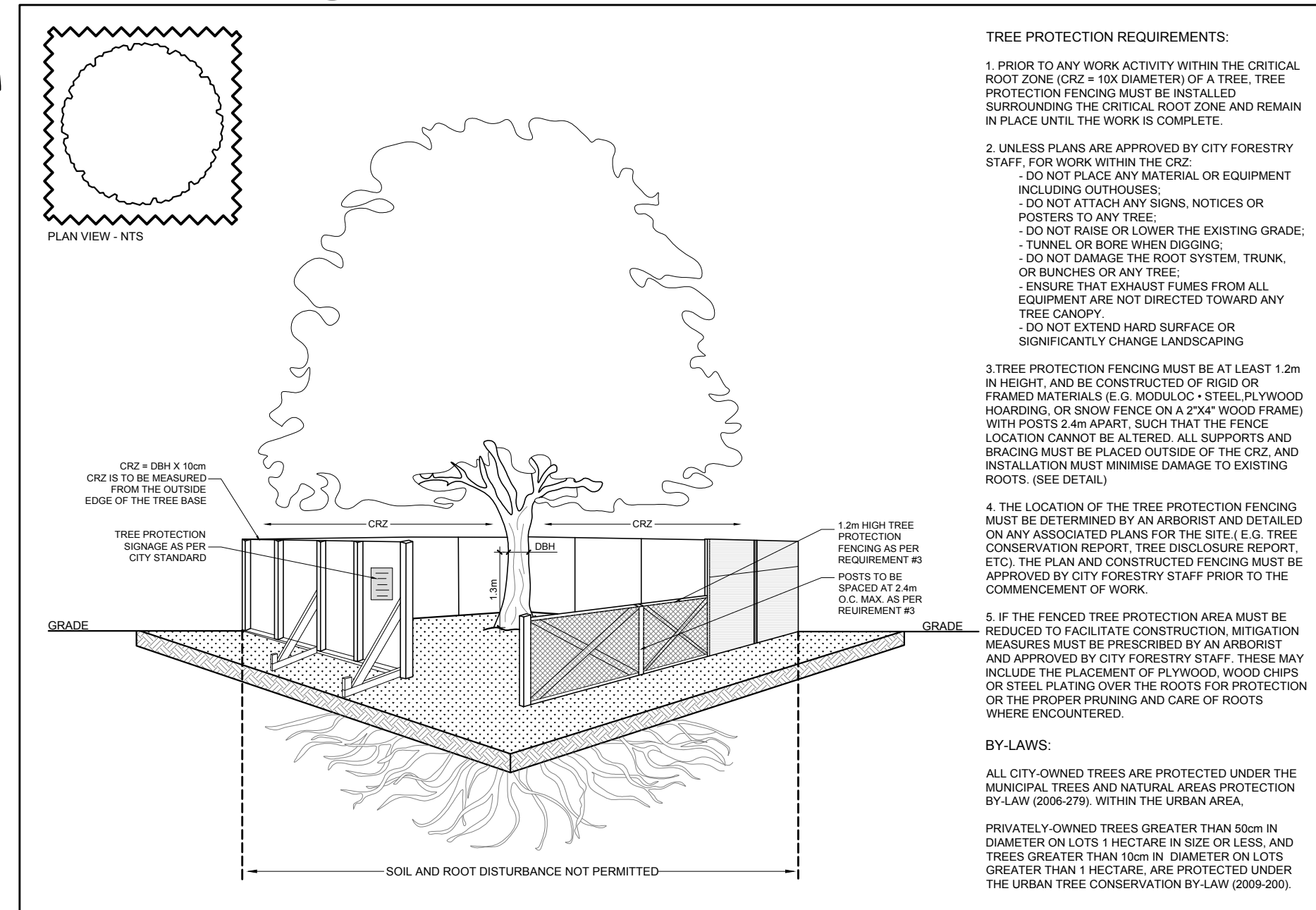
1 TREE CONSERVATION REPORT & LANDSCAPE PLAN
SCALE: 1:100



2 DECIDUOUS TREE PLANTING
SCALE: NTS



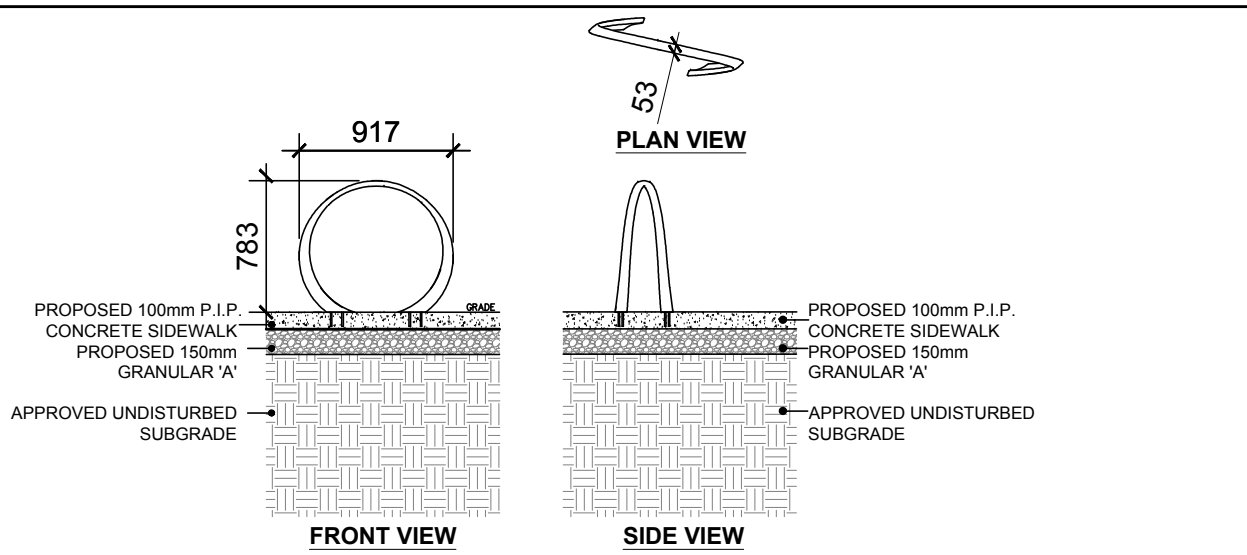
3 SHRUB / PERENNIAL PLANTING
SCALE: NTS



TREE PROTECTION REQUIREMENTS:

- PRIOR TO ANY WORK ACTIVITY WITHIN THE CRITICAL ROOT ZONE (CRZ = 10x DIAMETER) OF A TREE, TREE PROTECTION FENCING MUST BE INSTALLED SURROUNDING THE CRITICAL ROOT ZONE AND REMAIN IN PLACE UNTIL THE WORK IS COMPLETE.
 - DO NOT PLACE ANY MATERIAL OR EQUIPMENT INCLUDING OUTRIGGERS.
 - DO NOT ATTACH ANY SIGNS, NOTICES OR POSTERS TO ANY TREE.
 - DO NOT RAISE OR LOWER THE EXISTING GRADE, TUNNEL, OR BORE WHEN DIGGING.
 - DO NOT DAMAGE THE ROOT SYSTEM, TRUNK, OR BRANCHES OF ANY TREE.
 - ENSURE THAT EXHAUST FUMES FROM ALL EQUIPMENT ARE NOT DIRECTED TOWARD ANY TREE CANOPY.
 - DO NOT EXTEND HARD SURFACE OR SIGNIFICANTLY CHANGE LANDSCAPING.
- UNLESS PLANS ARE APPROVED BY CITY FORESTRY STAFF, FOR WORK WITHIN THE CRZ:
 - DO NOT PLACE ANY MATERIAL OR EQUIPMENT INCLUDING OUTRIGGERS.
 - DO NOT ATTACH ANY SIGNS, NOTICES OR POSTERS TO ANY TREE.
 - DO NOT RAISE OR LOWER THE EXISTING GRADE, TUNNEL, OR BORE WHEN DIGGING.
 - DO NOT DAMAGE THE ROOT SYSTEM, TRUNK, OR BRANCHES OF ANY TREE.
 - ENSURE THAT EXHAUST FUMES FROM ALL EQUIPMENT ARE NOT DIRECTED TOWARD ANY TREE CANOPY.
 - DO NOT EXTEND HARD SURFACE OR SIGNIFICANTLY CHANGE LANDSCAPING.
- TREE PROTECTION FENCING MUST BE AT LEAST 1.2m IN HEIGHT, AND BE CONSTRUCTED OF RIGID OR FRAMED MATERIALS (E.G. WOOD/OC, STEEL, PL WOOD HOARDING, OR SNOW FENCE ON A 2"x4" WOOD FRAME) WITH POSTS 2.4m APART, SUCH THAT THE FENCE LOCATION CANNOT BE ALTERED. ALL SUPPORTS AND BRACING MUST BE PLACED OUTSIDE OF THE CRZ, AND INSTALLATION MUST MINIMIZE DAMAGE TO EXISTING ROOTS. (SEE DETAIL).
- IF THE FENCED TREE PROTECTION AREA MUST BE REDUCED TO FACILITATE CONSTRUCTION MITIGATION MEASURES MUST BE PRESCRIBED BY AN ARBORIST AND APPROVED BY CITY FORESTRY STAFF. THESE MAY INCLUDE THE PLACEMENT OF PLYWOOD, WOOD CHIPS, OR STEEL PLATING OVER THE ROOTS FOR PROTECTION OR THE PROPER PRUNING AND CARE OF ROOTS WHERE ENCOUNTERED.

4 TREE PROTECTION FENCING
SCALE: NTS



NOTES:

- "S" COLLECTION - LOOP BIKE RACK AS AVAILABLE FROM WWW.LANDSCAPEORNS.COM OR APPROVED EQUAL.
- INSTALL AS PER MANUFACTURER'S SPECIFICATIONS FOR "EMBEDDED MOUNT".
- INSTALL 1000mm ON-CENTRE 1000mm FROM BUILDING OR PATHWAY.
- COLORS TO BE SELECTED FROM A STANDARD RANGE OF COLOURS.

5 LOOP BIKE RACK
SCALE: NTS

- GENERAL NOTES:**
- It is the responsibility of the appropriate contractor or official to report any errors, omissions or discrepancies on this plan with actual site conditions to the Landscape Architect before proceeding with construction.
 - The contractor is to notify all utility companies and authorities prior to any excavation and ascertain locations of underground services.
 - The contractor is to reinstate all areas and items damaged as a result of construction activity.
 - The contractor is to comply with all pertinent codes and by-laws.
 - The contractor is to maintain a positive surface run-off throughout the entire construction period.
 - The Landscape Architect is not responsible for subsurface conditions.
 - The contractor is to identify all existing trees to remain on site with the Landscape Architect prior to construction.
 - The contractor is to stake the proposed location of all plant material in conjunction with the Landscape Architect prior to excavation.
 - Minimum distances for selected deciduous trees are as follows:
 - Building Foundations 7.5m
 - Sidewalks 1.5m
 - Public Streets 2.5m
 - Underground Infrastructure 2.0m
 - All trees within 1m of underground utility trenches are to be excavated by hand.
 - Remove all protective wrapping from tree trunks after installation.
 - Staking of trees shall only be performed if necessary.
 - Ensure that mulch is pulled back a min. distance of 75mm from base of tree trunk.

EXISTING TREE LIST

KEY	QTY	BOTANICAL NAME	COMMON NAME	SIZE	CONDITION	REMARKS
TREES						
AC	2	Amelanchier canadensis	Serviceberry	150mm DBH	Poor	To be removed
AN	1	Acer negundo	Manitoba Maple	250mm DBH	Good	To remain

PROPOSED PLANT LIST

KEY	QTY	BOTANICAL NAME	COMMON NAME	SIZE	CONDITION	REMARKS
TREES						
AM	1	Acer x freemanii 'Armstrong'	Armstrong Maple	60mm ø	B&B	
GB	1	Ginkgo biloba 'Princeton Sentry'	Princeton Sentry Ginkgo	60mm ø	B&B	Male tree
SHRUBS						
SS	1	Sorbaria sorbifolia	Ural False Spirea	800mm ht.	Potted	
WC	34	Thuja occidentalis 'Clumps'	White Cedar Clumps	1.5m Ht.	Bare root	3 trunks or more

PERENNIALS AND ORNAMENTAL GRASSES

KF	11	Calamagrostis 'Karl Foerster'	Feather Reed Grass	250mm pot	Potted	600mm o.c.
RS	7	Hemerocallis 'Ruby Stella'	Ruby Stella Daylily	100mm pot	Potted	400mm o.c.

No.	Issue	Date	ML	JL
1	ISSUED FOR SITE PLAN CONTROL	11/22/2022		

JAMES B. LENOX & ASSOCIATES INC.
LANDSCAPE ARCHITECTS
3332 CARLING AVE. OTTAWA, ONTARIO K2M 1S8
Tel: (613) 722-5168 Fax: (866) 343-3942

PROJECT
PROPOSED NINE STOREY RESIDENTIAL BUILDING
230-232 LISGAR STREET, OTTAWA ON

DRAWING
TREE CONSERVATION REPORT & LANDSCAPE PLAN

STAMP

SCALE
AS SHOWN

START DATE
SEPTEMBER 2022

PROJECT NO.

PROJECT NORTH

DRAWING NO.
L.1

PLOT SIZE ARCH-D