



**Goodkey, Weedmark
& Associates Limited**

Consulting Engineers

1688 Woodward Dr.
Ottawa, ON
Canada
K2C 3R8

Tel. 613-727-5111
info@gwal.com
www.gwal.com

Principal, Partners & Associates
F.W.A. Bann, P.Eng.
R. Lefebvre, P.Eng., LEED® AP
D.R. Vyas, P.Eng., MIEEE
S. Hamilton, P.Eng.
J. Moffat, P.Eng.
E. Pérusse, P.Eng., ing.
R. Boivin, P.Eng., ing.
R. Leonard, P.Eng.
M. Sarasin, P.Eng.

Executive Consultants
A. Bogdanowicz, P.Eng.
M.G. Carriere, C.E.T.
R.J. McIntyre, P.Eng.

August 6, 2021

VIA E-MAIL

Civitas Architecture Inc.
14 Chamberlain Avenue
Suite 301
Ottawa, Ontario
K1S 1V9

**ATTENTION: MR. DOUGLAS RANCIER, B.ARCH., DIPL. ARCH. TECH., OAA,
MRAIC, LEED® AP, PRINCIPAL, DESIGN ARCHITECT**

**SUBJECT: 301 SOMME ST., OTTAWA
FASTFRATE OTTAWA - NEW FACILITY
OUR PROJECT NO. 2020-514**

Dear Sir:

We have designed the site lighting for the new facility located at 301 Somme Street in accordance with the following guidelines as requested by the City of Ottawa:

1. It must be designed using only fixtures that meet the criteria for Full Cut-Off (Sharp cut-off) Classification, as recognized by the Illuminating Engineering Society of North America (IESNA or IES), and;
2. It must result in minimal light spillage onto adjacent properties. As a guideline, 0.5 fc is normally the maximum allowable spillage.
3. In addition to the above requirements, the design also provides 0.0 fc of light spillage along the south property line adjacent to Highway 417, in accordance with the Ministry of Transportations requirements.

Yours very truly,

GOODKEY, WEEDMARK & ASSOCIATES LIMITED



James Moffat, P.Eng.
Partner, Senior Electrical Engineer
JM/md



FASTFRATE OTTAWA - NEW FACILITY

301 SOMME STREET, OTTAWA, ON.
ELECTRICAL

CLIENT LOGO:



KEY PLAN:

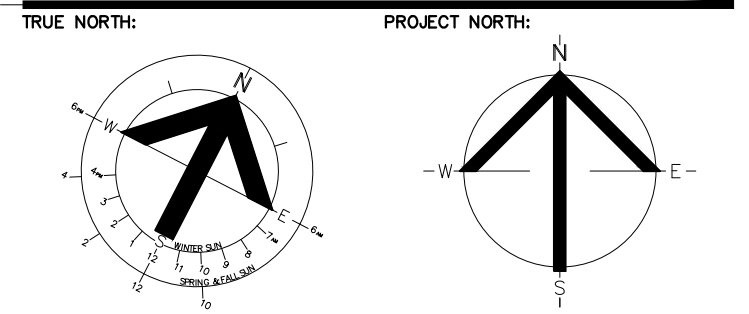
DRAWING LIST	
SYMBOL	DESCRIPTION
E1	ELECTRICAL TITLE SHEET
E2	ELECTRICAL LIGHTING SITE PLAN NEW WORK

LIGHTING LEGEND	
SYMBOL	DESCRIPTION
	DOWNLIGHT FIXTURE - TYPE AS SHOWN
	WALL MOUNTED LIGHT FIXTURE - TYPE AS SHOWN
	LIGHT STANDARD SMALL AREA LIGHT - TYPE AS SHOWN

LINETYPE LEGEND	
LINETYPE	DESCRIPTION
---	NEW WORK
- - - - -	UNDEGROUND CONDUIT

LIGHTING FIXTURE SCHEDULE								
TYPE	DESCRIPTION	CATALOG NUMBER	LAMPS PER FIXTURE			VOLT	MOUNTING	REMARKS
			QTY	TYPE	WATTS			
1	GARDOO SITE & AREA ECOFORM ECF-S SMALL AREA LIGHT	ECF-S-48L-900-NW-G2-AR-4-UNV-BL-IMR03-HIS-BZ	14	LED	135	4000K	347V	POLE MOUNTED
2	GARDOO SITE & AREA ECOFORM ECF-S SMALL AREA LIGHT	ECF-S-32L-700-NW-G2-AR-3-UNV-BL-IMR03-HIS-BZ	3	LED	73	4000K	347V	POLE MOUNTED
3	GARDOO SITE & AREA ECOFORM ECF-S SMALL AREA LIGHT	ECF-S-32L-700-NW-G2-AR-4-UNV-BL-IMR03-BZ	7	LED	73	4000K	347V	POLE MOUNTED
4	GARDOO WALL MOUNTED SCONCE 121	121-32L-1000-NW-G4-4-UNV-BL-IMR03-BZ	11	LED	107	4000K	347V	WALL MOUNTED
5	LIGHTOLIER DOWNLIGHTING EASYLYTE	Z4RDL20835W0WHZ10U 4RN	54	LED	20	3500K	347V	RECESSED

NOTES:
1. ALL ACRYLIC LENSES SHALL BE MINIMUM 0.125" THICK.
2. COORDINATE AIMING OF ADJUSTABLE FIXTURES WITH INTERIOR DESIGNER AND CLIENT.



PRELIMINARY
NOT FOR CONSTRUCTION

RECORD OF REVISIONS:	
6	
5	
4	
3	
2	
1	ISSUED FOR SITE PLAN APPROVAL 08/13/21
	ISSUED FOR SITE PLAN 08/06/21

NUMBER: REVISION: DATE: (MM/DD/YY)
ISSUE:

PROFESSIONAL STAMP: PROFESSIONAL STAMP:



CIVITAS ARCHITECTURE INC. OTTAWA, ON :
5 4 3 2 1 7 4 8 2
14 CHAMBERLAIN AVENUE, SUITE 101 CANADA K1S 1V8
WWW.CIVITAS-INC.CA



GOODKEY WEEDMARK & ASSOCIATES LIMITED
1688 Woodward Dr. 613 727-5111 Voice
Ottawa Ontario 613 727-5115 Fax
Canada K2C 3R8 www.gwal.com Web

PROJECT TITLE:
FASTFRATE OTTAWA
NEW FACILITY

301 SOMME STREET

DRAWING TITLE:

ELECTRICAL
TITLE SHEET

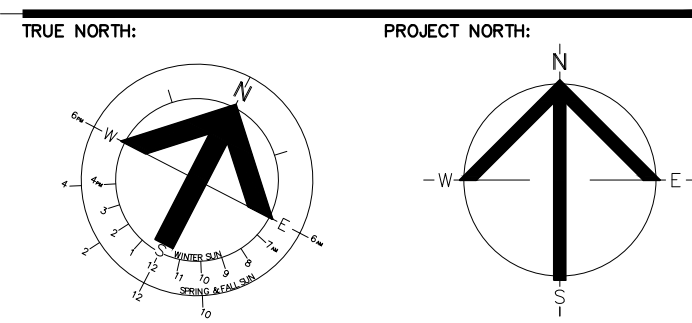
DRAWN BY:	N.YARASKAVITCH	DRAWING NUMBER:	
DATE:	21/08/06		
REVIEWED BY:	J.MOFFAT		
APPROVED BY:	J.MOFFAT		E1
PRINT DATE:		REVISION NUMBER:	
ISSUED DATE:	21/08/06		
CLIENT PROJECT #:		PROJECT #:	2020-514



DO NOT SCALE THIS DRAWING. USE FIGURE DIMENSIONS ONLY. THE CONTRACTOR IS RESPONSIBLE FOR VERIFYING ALL DIMENSIONS AND NOTIFYING THE ARCHITECT OF ANY DISCREPANCIES BEFORE CONSTRUCTION COMMENCES. THIS DRAWING IS TO BE READ IN CONJUNCTION WITH ALL STRUCTURAL, MECHANICAL, ELECTRICAL, CIVIL AND OTHER CONSULTANT DRAWINGS. THIS DRAWING SHALL NOT BE USED FOR CONSTRUCTION PURPOSES UNLESS SIGNED BY THE ARCHITECT. COPYRIGHT RESERVED. ALL PARTS OF THIS DRAWING ARE THE EXCLUSIVE PROPERTY OF THE ARCHITECT.



KEY PLAN:



PRELIMINARY
NOT FOR CONSTRUCTION

RECORD OF REVISIONS:

6		
5		
4		
3		
2		
1		
0		

ISSUED FOR SITE PLAN APPROVAL 08/13/21
ISSUED FOR SITE PLAN 08/06/21

NUMBER: REVISION: DATE: (MM/DD/YY)

PROFESSIONAL STAMP: PROFESSIONAL STAMP:



CIVITAS ARCHITECTURE INC. OTTAWA, ON
5 14 CHAMBERLAIN AVENUE, SUITE 101 CANADA K1S 1V8
WWW.CIVITAS-INC.CA



GOODKEY WEEDMARK & ASSOCIATES LIMITED
1688 Woodward Dr. Ottawa, Ontario Canada K2C 3R8
613 727-5111 Voice
613 727-5115 Fax
www.gwal.com Web

PROJECT TITLE:
FASTFRATE OTTAWA
NEW FACILITY

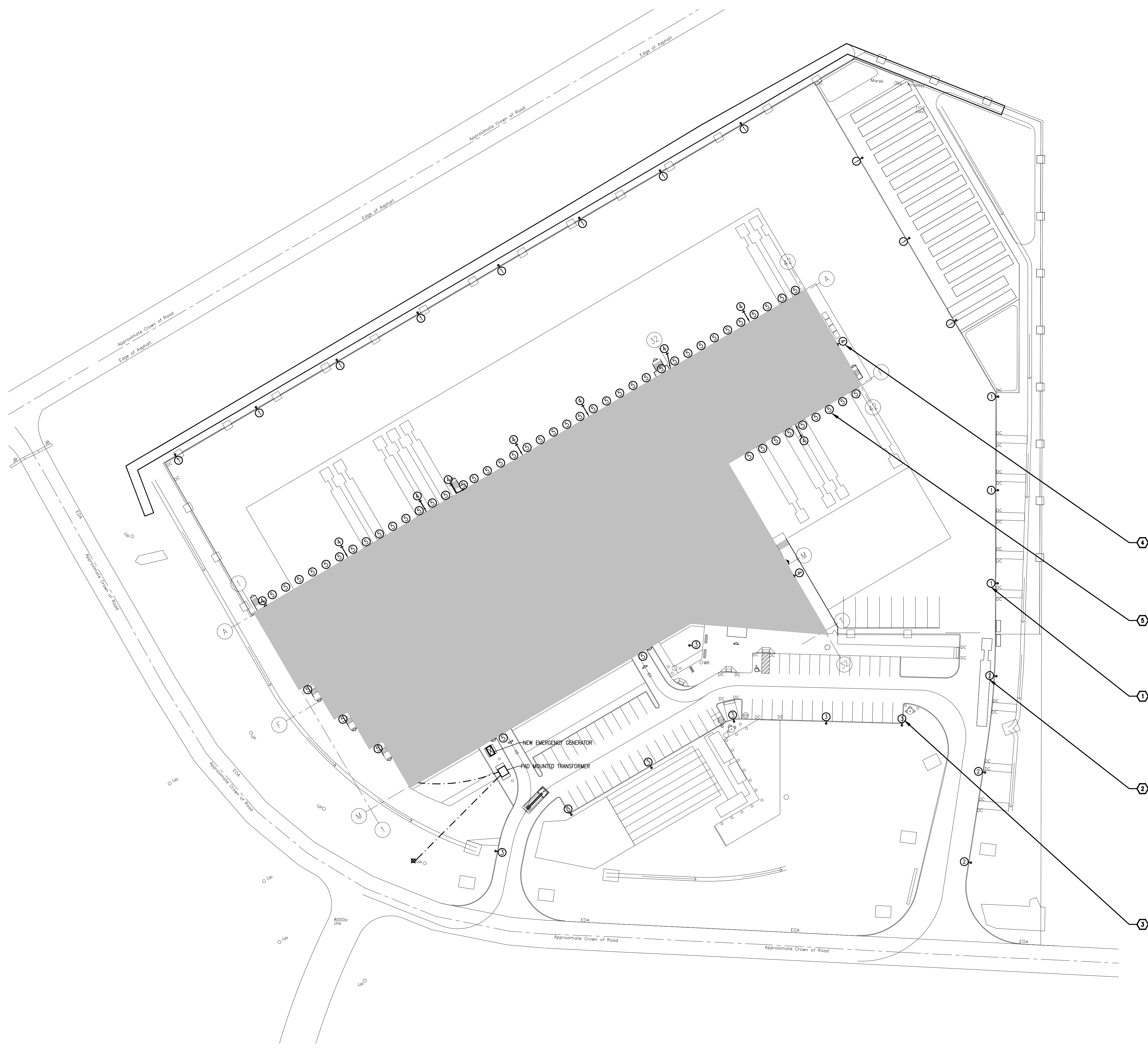
301 SOMME STREET

DRAWING TITLE:
**ELECTRICAL
LIGHTING AND UTILITY
SITE PLAN**

DRAWN BY:	N.YARASKAVITCH	DRAWING NUMBER:	
DATE:	21/08/06		
REVIEWED BY:	J.MORFAT		
APPROVED BY:	J.MORFAT		E2
PRINT DATE:		REVISION NUMBER:	
ISSUED DATE:	21/08/06		
CLIENT PROJECT #:		PROJECT #:	2020-514

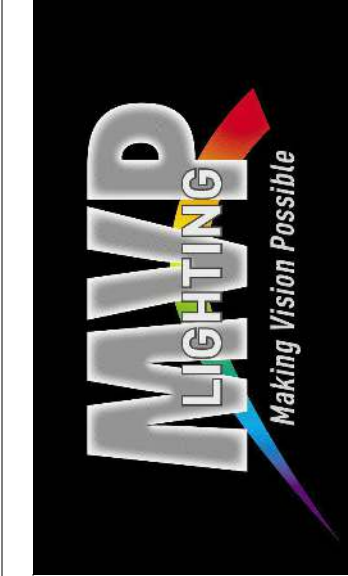
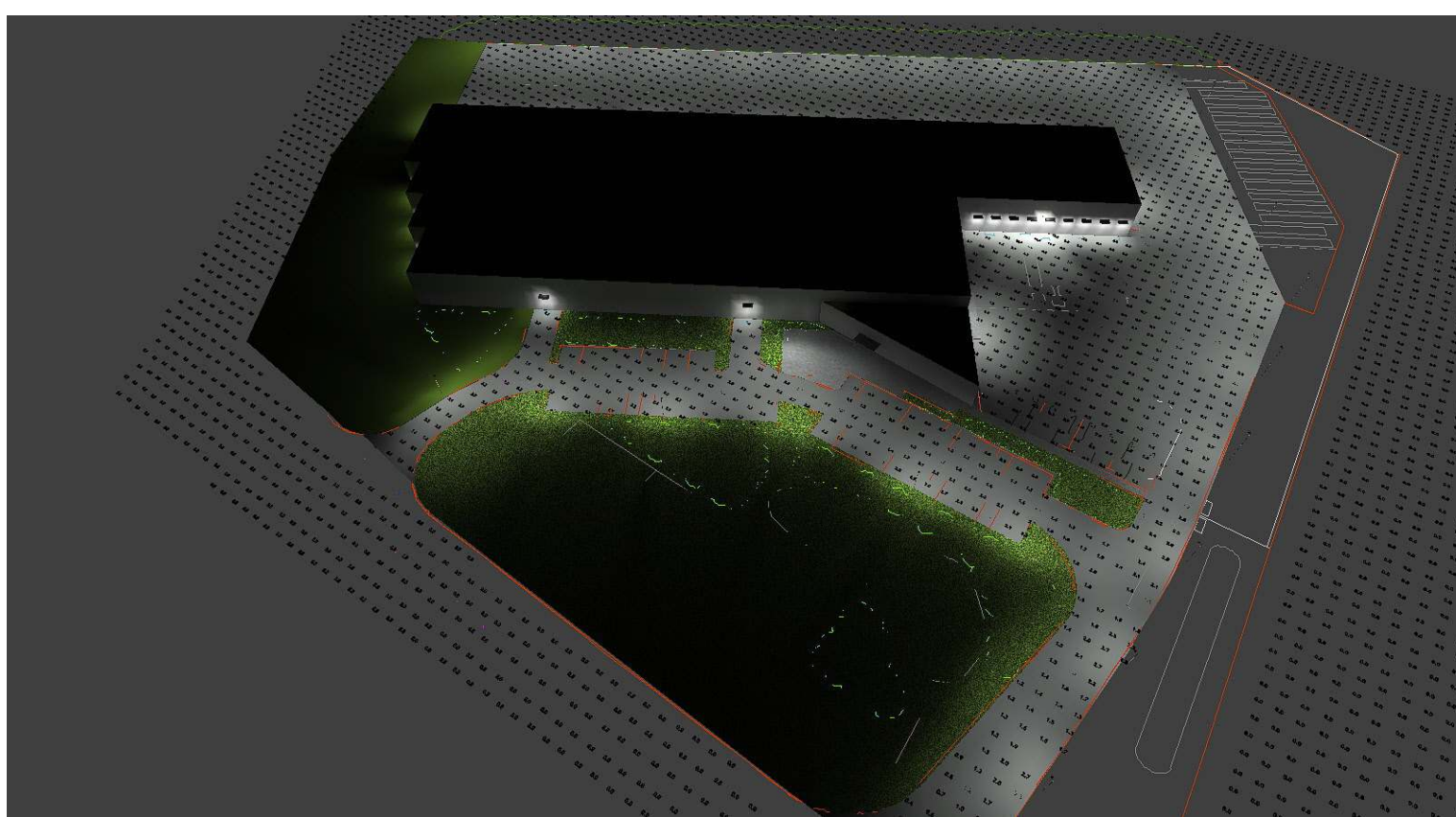
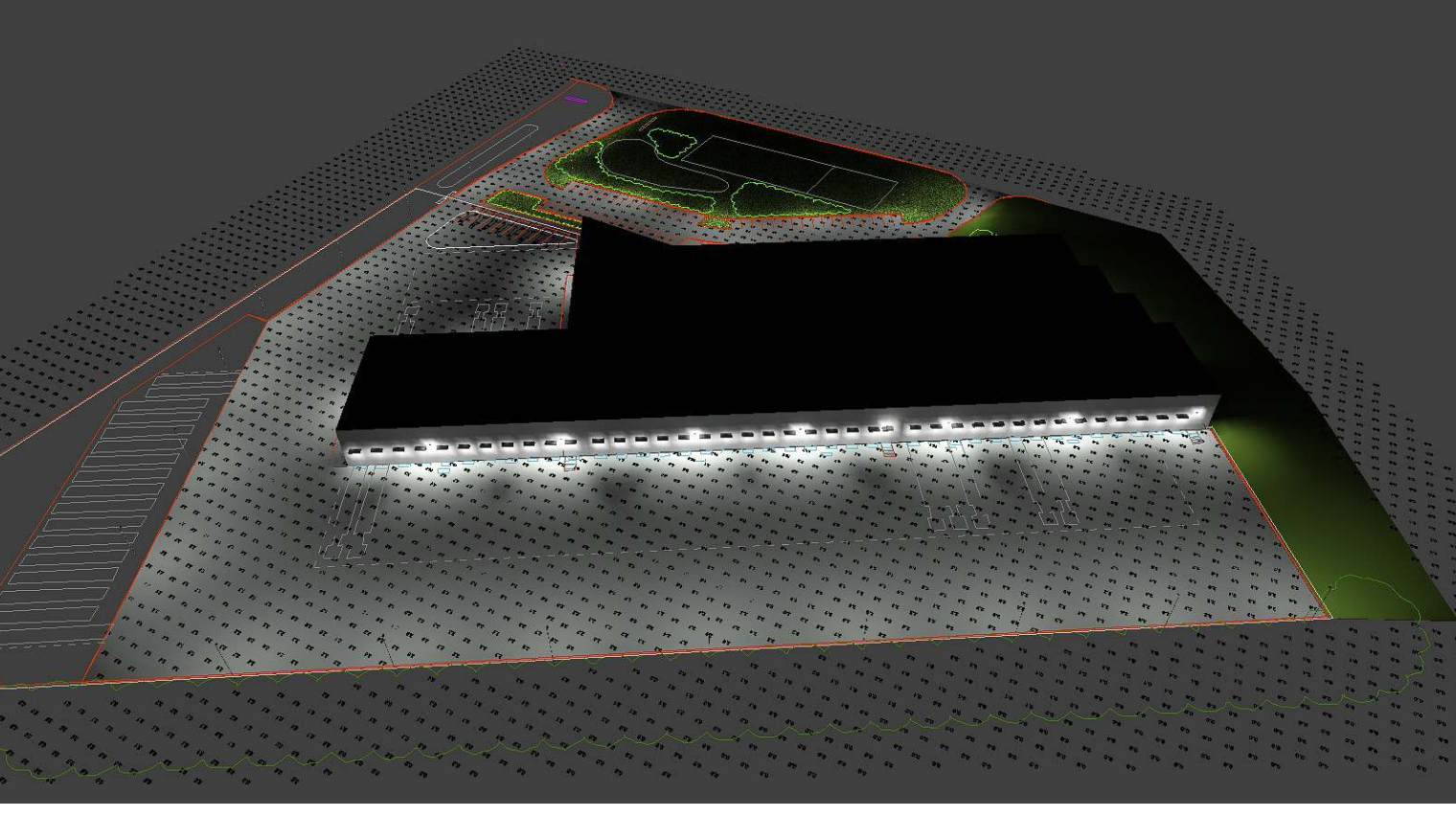
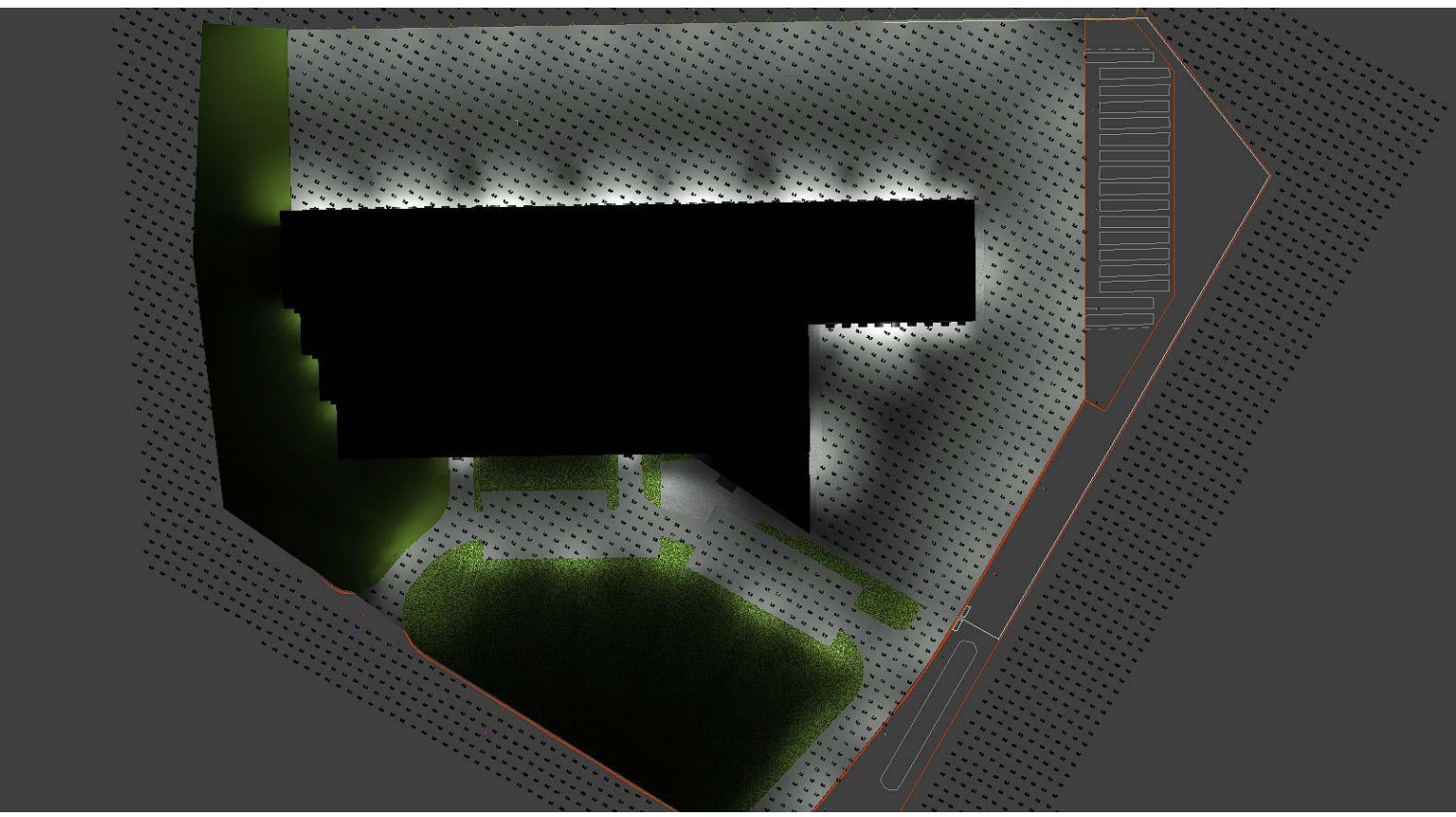
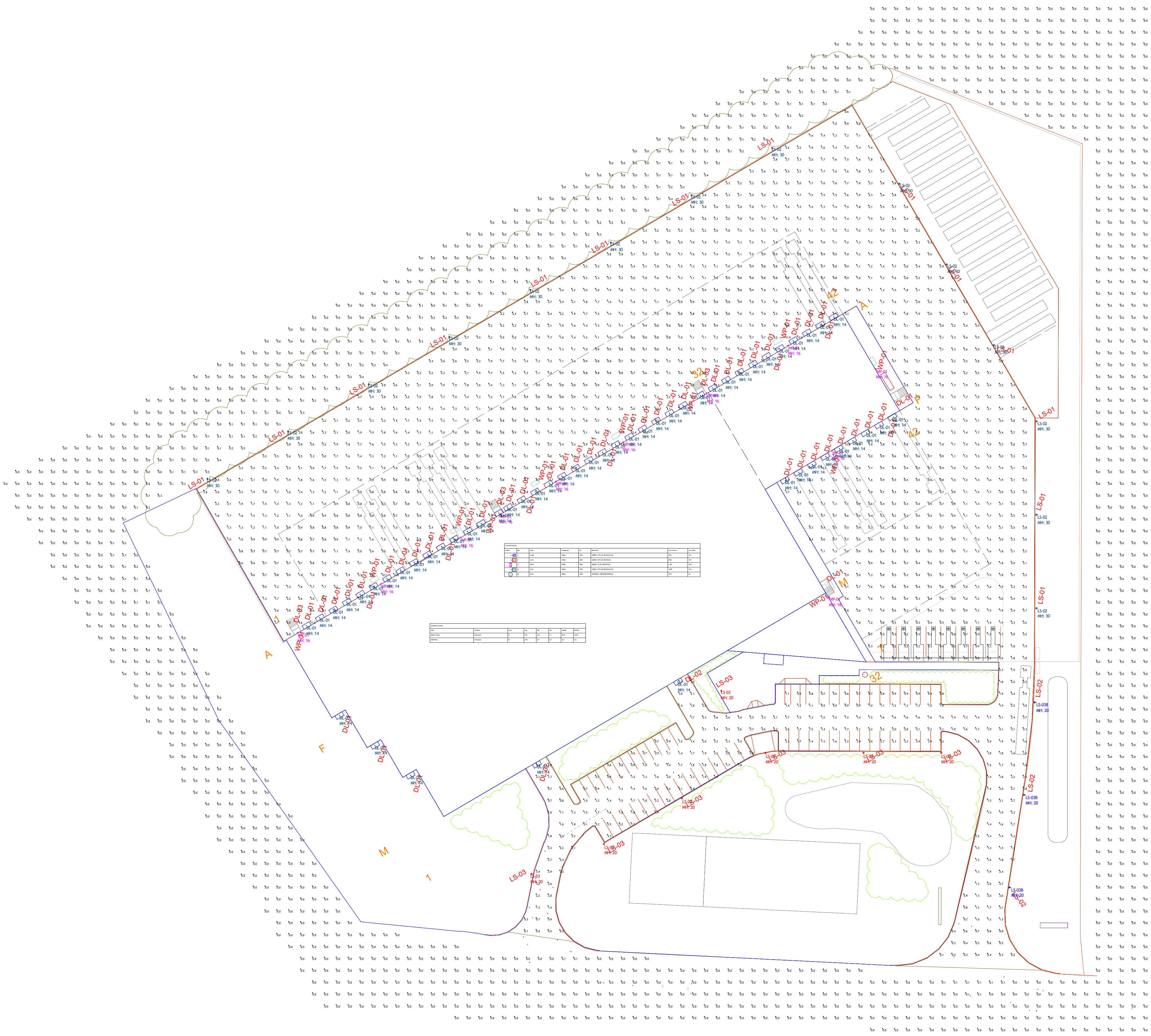
DO NOT SCALE THIS DRAWING. USE FIGURE DIMENSIONS ONLY. THE CONTRACTOR IS RESPONSIBLE FOR VERIFYING ALL DIMENSIONS AND NOTIFYING THE ARCHITECT OF ANY DISCREPANCIES BEFORE CONSTRUCTION COMMENCES. THIS DRAWING IS TO BE READ IN CONJUNCTION WITH ALL STRUCTURAL, MECHANICAL, ELECTRICAL, CIVIL AND OTHER CONSULTANT DRAWINGS. THIS DRAWING SHALL NOT BE USED FOR CONSTRUCTION PURPOSES UNLESS SIGNED BY THE ARCHITECT. COPYRIGHT RESERVED. ALL PARTS OF THIS DRAWING ARE THE EXCLUSIVE PROPERTY OF THE ARCHITECT.

- DRAWING NOTES**
- TYPICAL:** PROVIDE NEW TYPE (1) LIGHT FIXTURE C/W CONDUIT AND WIRE AND CONNECT TO NEW TIME CLOCK SYSTEM AND NEW EXTERIOR LIGHTING CIRCUIT. COORDINATE EXACT LOCATION, MOUNTING AND MOUNTING HEIGHT ON SITE WITH CLIENT REPRESENTATIVE AND ARCHITECT.
 - TYPICAL:** PROVIDE NEW TYPE (2) LIGHT FIXTURE C/W CONDUIT AND WIRE AND CONNECT TO NEW TIME CLOCK SYSTEM AND NEW EXTERIOR LIGHTING CIRCUIT. COORDINATE EXACT LOCATION, MOUNTING AND MOUNTING HEIGHT ON SITE WITH CLIENT REPRESENTATIVE AND ARCHITECT.
 - TYPICAL:** PROVIDE NEW TYPE (3) LIGHT FIXTURE C/W CONDUIT AND WIRE AND CONNECT TO NEW TIME CLOCK SYSTEM AND NEW EXTERIOR LIGHTING CIRCUIT. COORDINATE EXACT LOCATION, MOUNTING AND MOUNTING HEIGHT ON SITE WITH CLIENT REPRESENTATIVE AND ARCHITECT.
 - TYPICAL:** PROVIDE NEW TYPE (4) LIGHT FIXTURE C/W MOTION SENSOR, CONDUIT AND WIRE AND CONNECT TO NEW EXTERIOR LIGHTING CIRCUIT. COORDINATE EXACT LOCATION, MOUNTING AND MOUNTING HEIGHT ON SITE WITH CLIENT REPRESENTATIVE AND ARCHITECT.
 - TYPICAL:** PROVIDE NEW TYPE (5) LIGHT FIXTURE C/W CONDUIT AND WIRE AND CONNECT TO NEW TIME CLOCK SYSTEM AND NEW EXTERIOR LIGHTING CIRCUIT. COORDINATE EXACT LOCATION, MOUNTING AND MOUNTING HEIGHT ON SITE WITH CLIENT REPRESENTATIVE AND ARCHITECT.



1 SITE PLAN
E2 1:500





MVP LIGHTING
 Stewart Impney | Principal
 o: 613-800-9909 ext #3
 c: 613-282-0997

Drawn By:
 Checked By:
 Date:2021-07-08
 Scale:

FASTFRATE SITE
 MVPFST10708B