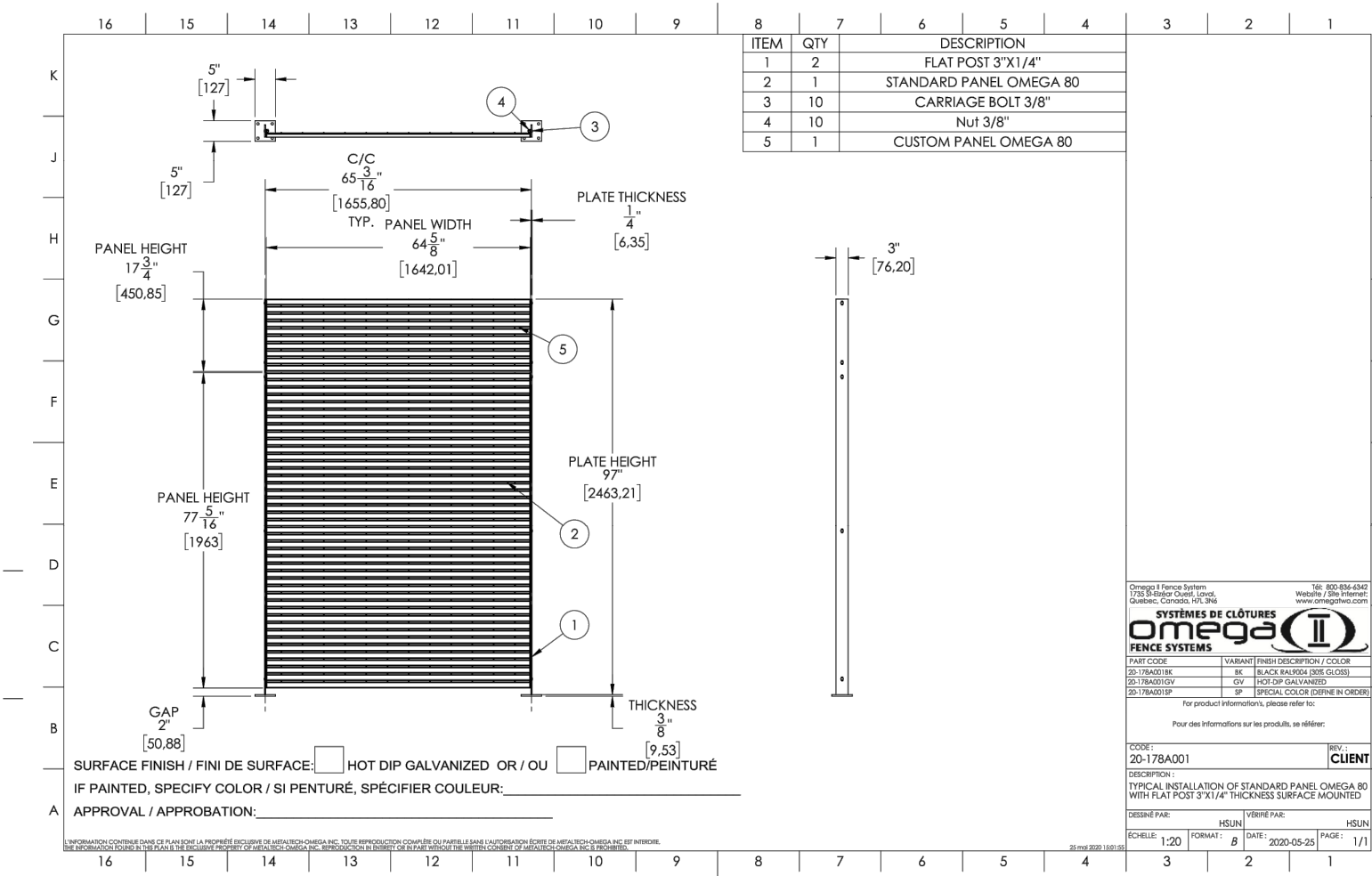
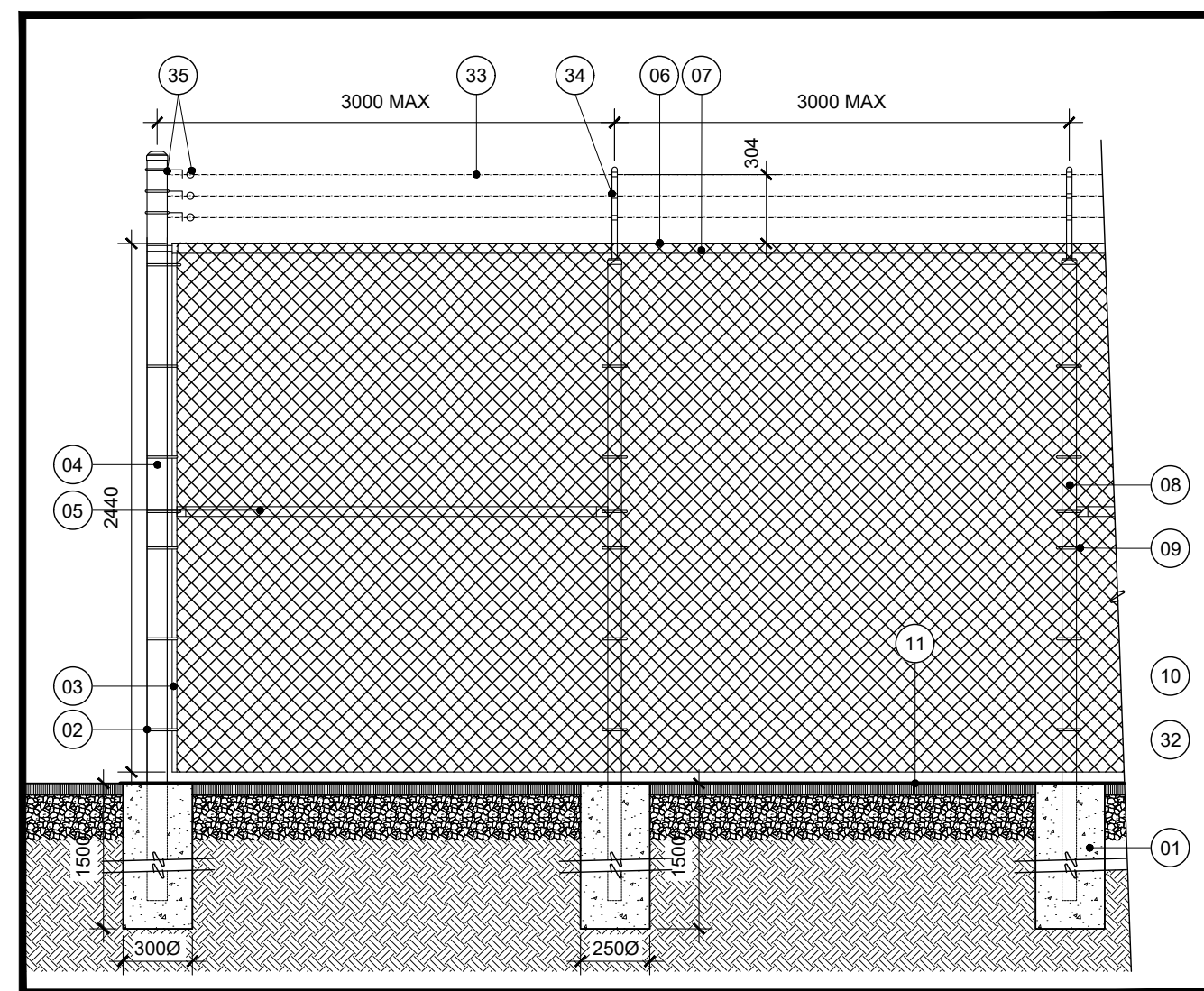


ARCHITECTURAL FENCING DETAILS

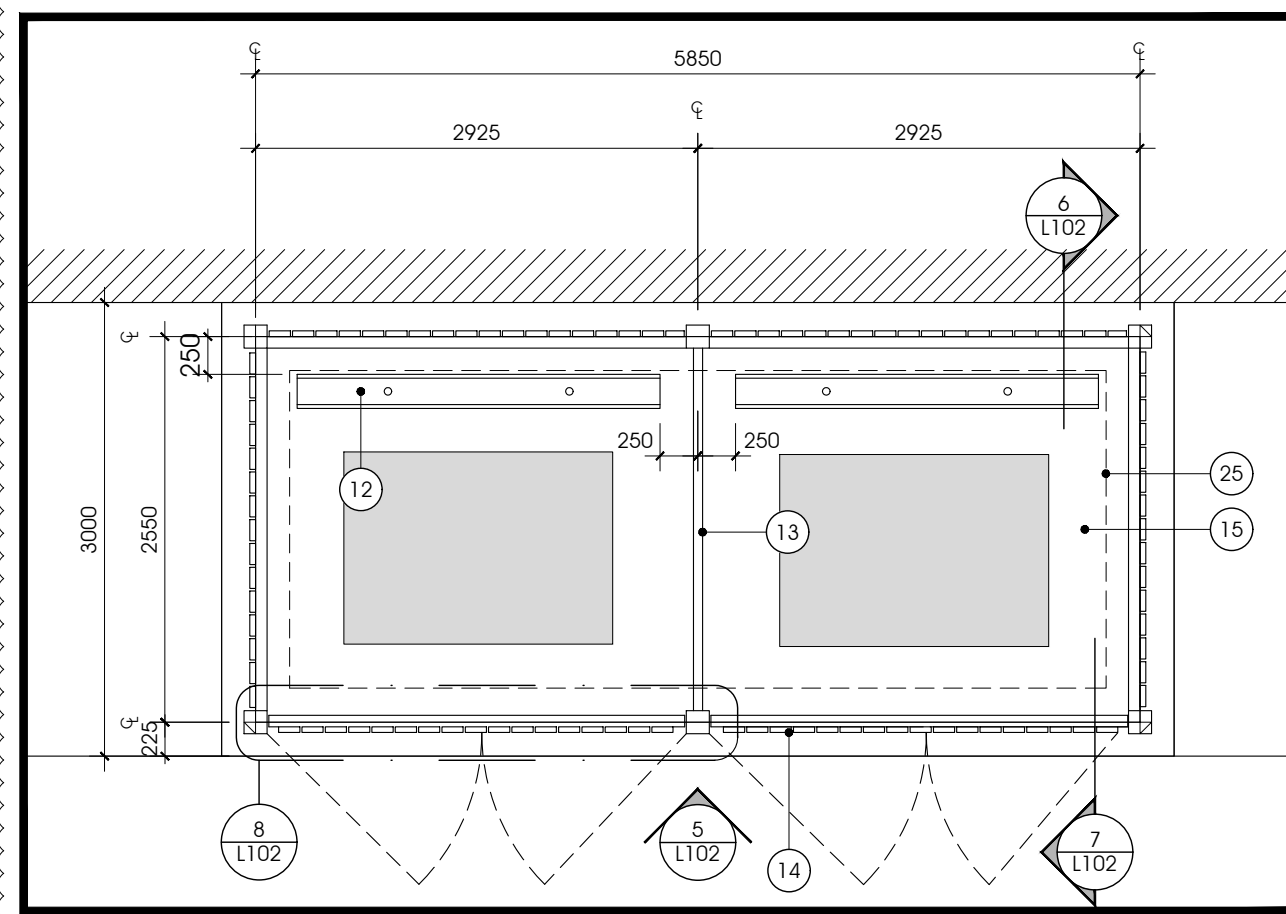


CHAIN-LINK FENCING DETAIL

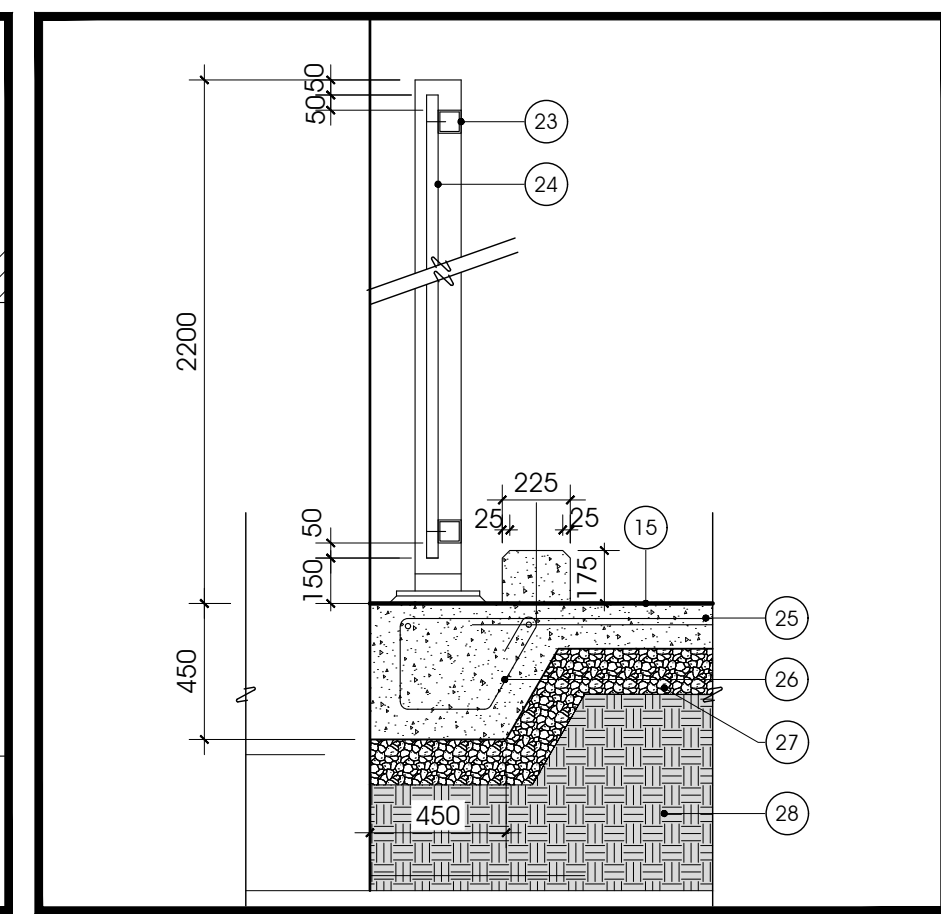


3 CHAINLINK FENCE WITH BARBED WIRE DETAIL  
L102 1:30

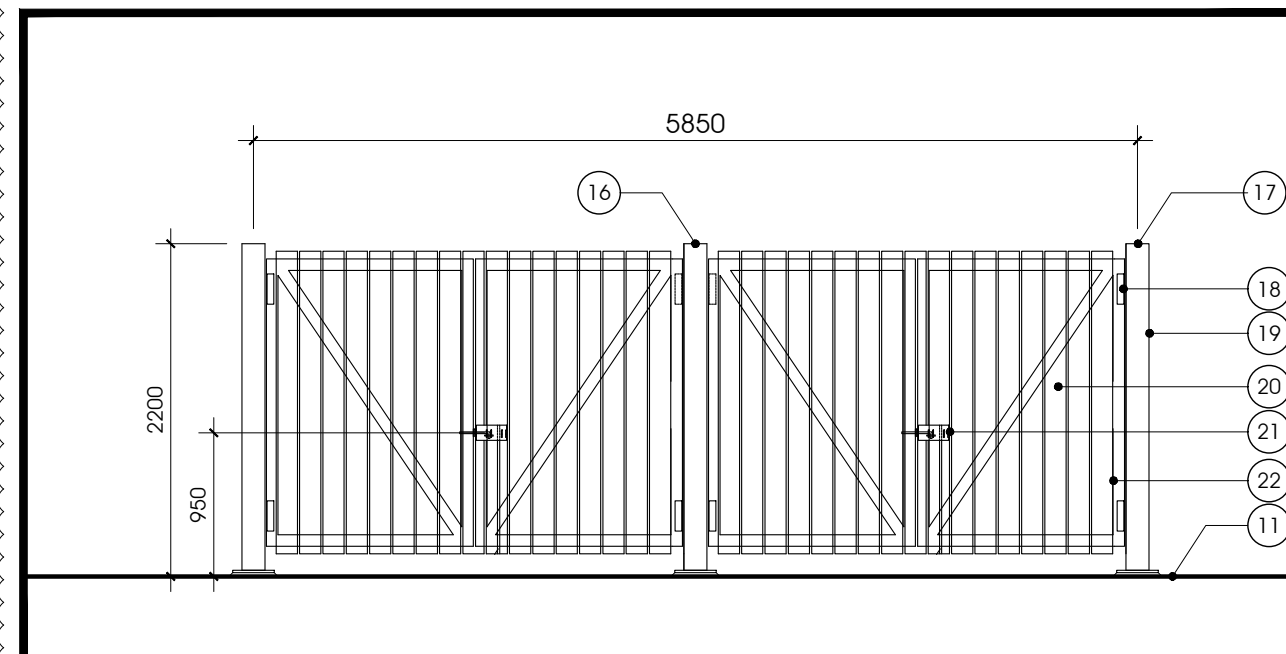
GARBAGE ENCLOSURE DETAILS



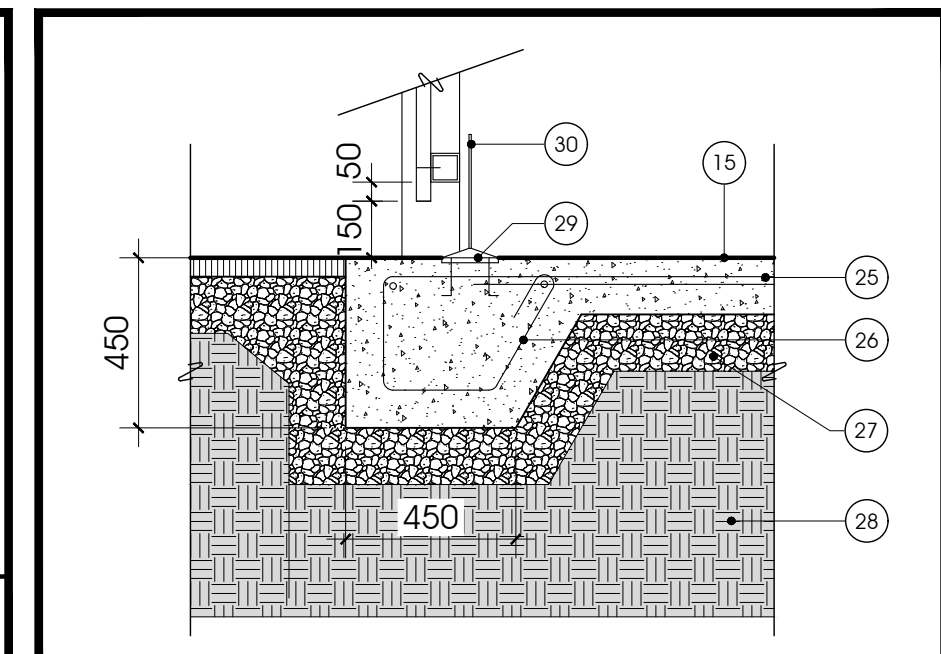
4 GARBAGE ENCLOSURE PLAN VIEW  
L102 1:50



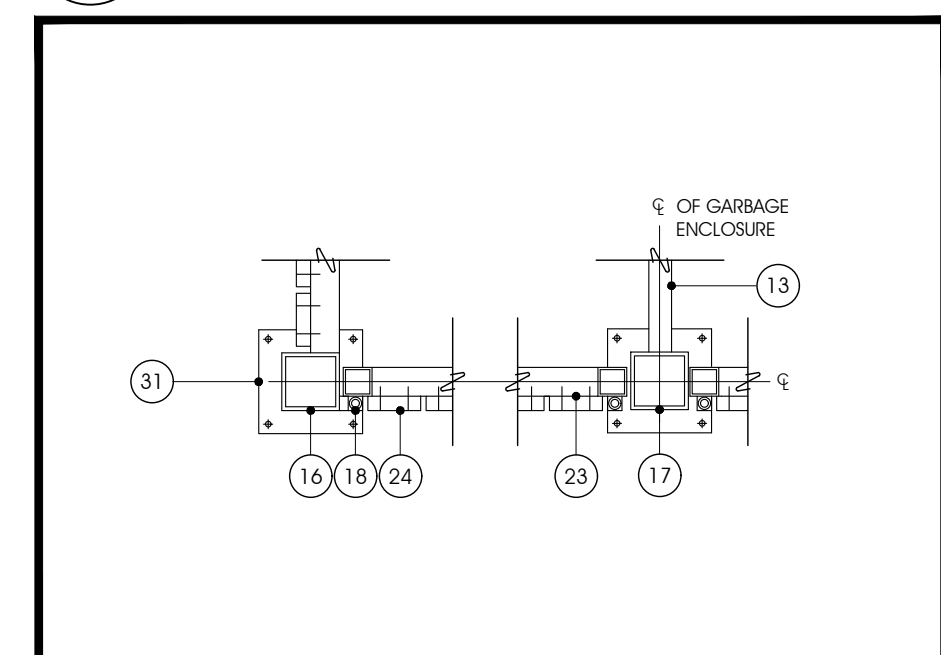
6 GARBAGE ENCLOSURE DETAIL  
L102 1:25



5 GARBAGE ENCLOSURE FRONT ELEVATION  
L102 1:50



7 GARBAGE ENCLOSURE DETAILS  
L102 1:20



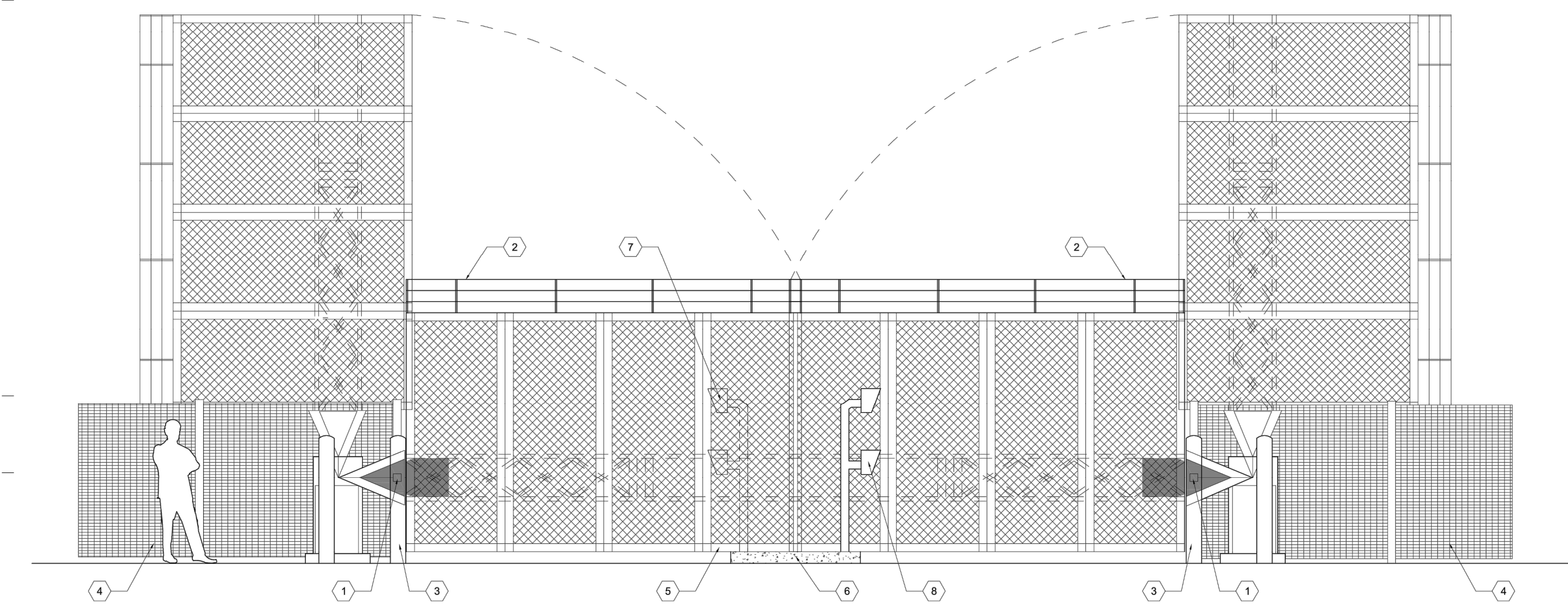
8 GARBAGE ENCLOSURE GATE PLAN  
L102 1:20

**OMEGA ARCHITECTURAL SINGLE SWING GATE MODEL GPM20**  
Barrière Omega Architecturale à battant simple modèle GPM20

GATE POST DIMENSIONS		
PANEL (H)	OPENING	POST
4' 5" & 6"	3' to 8'	3" x 3" 11 ga
8"	3' to 7'	3" x 3" 11 ga
4"	9' to 16'	4" x 4" 11 ga
5"	9' to 13'	4" x 4" 11 ga
6"	9' to 12'	4" x 4" 11 ga
8"	8' to 9'	4" x 4" 11 ga
5"	14' to 16'	6" x 6" 3/4"
6"	13' to 30'	6" x 6" 3/4"
8"	10' to 26'	6" x 6" 3/4"

Omega II Fence Systems  
1735 Blvd. St-Elzear West  
Laval, Québec  
H7L 3N6  
Tel: 450-686-9800  
1-800-836-8342  
Fax: 450-681-6318  
www.omegatwo.com

VEHICLE GATE: DUAL DIRECTION CHOP GATE DETAIL



VEHICLE GATE DETAIL NOTES

- UNIT RELAY (UR) ON EITHER SIDE OF THE GATE OPENING ON THE SECURED SIDE.
- CHOP GATE WITH FIDS ANTI-CLIMB SENSORS; EACH TO BE 2.4m TALL AND 4.8m WIDE.
- BOLLARD ON EITHER SIDE OF THE GATE.
- ARCHITECTURAL FENCE. SEE DETAILS L102.
- DUAL HEIGHT PEDESTAL (P) WITH LONG-RANGE CREDENTIAL READERS / INTERCOMS.
- MEDIAN OF GATE.
- INTERCOM SYSTEM AT HEIGHT REQUIRED FOR TRUCKS.
- INTERCOM SYSTEM AT HEIGHT REQUIRED FOR CARS.

DRAWING NOTES, L102

- CYLINDRICAL CONCRETE FOOTING, TO CSA 30MPC CLASS F-1.
- TENSION BANDS
- TENSION BAR 5 x 20mm, GALVANIZED STEEL
- 90mm O.D. TERMINAL AND CORNER POST WITH POST TOP, LENGTHENED TO RECEIVE BARBED WIRE
- 43mm O.D. BRACE RAIL
- KNUCKLED TOP EDGE
- 43mm O.D. TOP RAIL
- 60mm O.D. LINE POST
- WIRE FASTENERS 400mm O/C, SINGLE STRAND GALVANIZED, 5mm
- BOTTOM WIRE FASTENED 450mm OC
- FINISHED GRADE
- PRECAST CONCRETE CURB 2400mm LONG, ANCHOR TO CONCRETE SIDEWALK WITH DOWELS.
- 50x50mm HSS AT 1200mm HEIGHT.
- PROVIDE AT EACH GATE VERTICAL BOLT GUIDES TO ENGAGE INTO GATE HASP
- NEW CONCRETE SIDEWALK SLAB, REFER TO CIVIL
- 2200mm HIGH POST HSS, 152.4 x 152.4 x 7.95mm THICK.
- HSS 152.4 x 152.4 x 7.95mm THICK WELD CAP ON TOP.
- HEAVY DUTY CUSTOM PIVOT HINGE.
- CLOSE OFF TOP OF ALL STEEL POSTS (TYP).
- 38 x 140mm TIMBER FACING, STAINED.
- SURFACE BOLT, SEE DETAIL 7/L102.
- GATE CONSTRUCTION, HSS 76.2 x 76.2 x 4.78mm THICK ON FOUR SIDES AND DRILL FOR THE MEMBERS, PRE-DRILL AS REQUIRED FOR TIMBER FACING (TO SUIT LATCHING DEVICE).
- HSS 76.2 x 76.2 x 4.78mm, 78mm FRAMING TOP AND BOTTOM, PRE-DRILL AS REQUIRED FOR FASTENING OF TIMBER FACING.
- 38 x 140mm TIMBER FACING WITH 10mm SPACING.
- LINE OF 450mm SLAB THICKENING ALL SIDES.
- GRANULAR 'A', REFER TO CIVIL
- PREPARED AND APPROVED SUBGRADE
- 150 x 150 x 12.5mm STEEL PLATE ANCHORED IN CONCRETE.
- PROVIDE GALVANIZED STEEL DROP PIN AND HOLDING PIN FASTENED TO STEEL GATE FRAME ON SIDE OPPOSITE TO HINGE FOR LATCH.
- 275 x 275 x 16mm THICK BASE PLATE WELDED TO BOLLARD.
- 40-75mm CLEARANCE
- 3 - 2.3mm BARBED WIRE BARBS 150mm APART TYP.
- BARBED WIRE ARM, ANGLED TOWARDS OUTSIDE OF FENCED AREA
- BRACE BAND AND EYE HOOK

CLIENT LOGO: **FASTFRATE CBRE**

RECORD OF REVISIONS:

NO.	REVISION	DATE
1	ISSUED FOR SITE PLAN APPROVAL	2021-08-13
2	REVISED FOR SITE PLAN APPROVAL	2022-09-26

PROFESSIONAL STAMP: **ASSOCIATION OF LANDSCAPE ARCHITECTS ONTARIO**

**CIVITAS GROUP**  
ARCHITECTURE & LANDSCAPE ARCHITECTURE

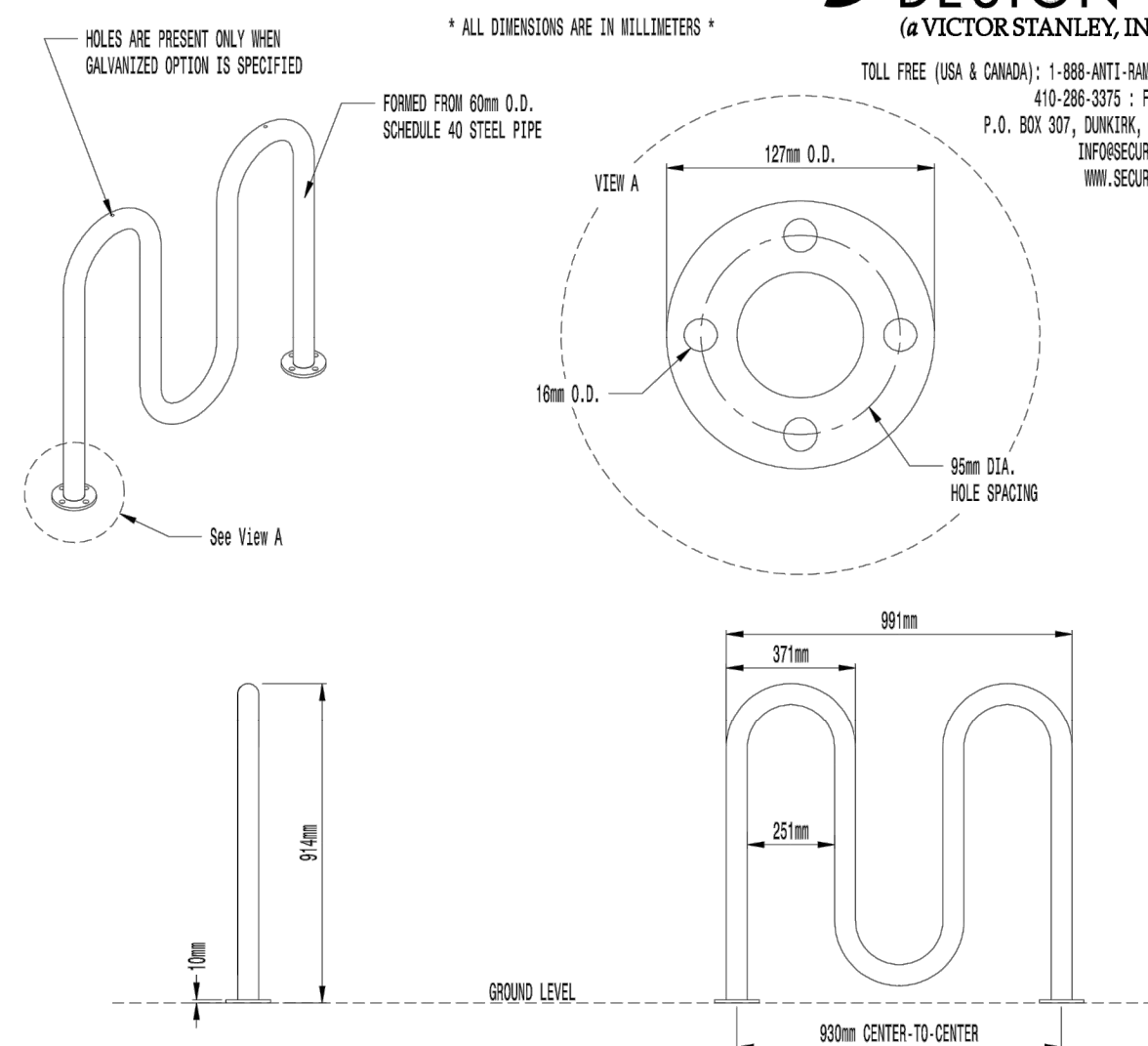
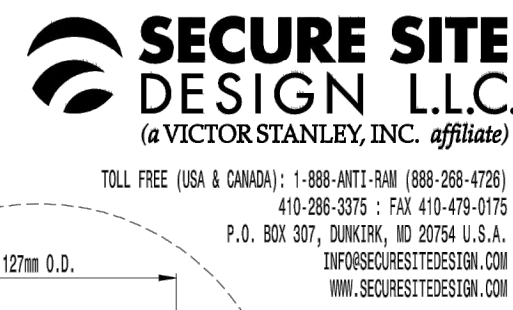
CIVITAS ARCHITECTURE INC. 14 CHAMBERLAIN AVENUE, SUITE 101 OTTAWA, ON CANADA K1S 1V9  
1-613-742-7482  
WWW.CIVITAS-INC.CA

PROJECT TITLE:  
**NEW WAREHOUSE & CROSS DOCK FACILITY**  
301 SOMME STREET, OTTAWA, ON

DRAWING TITLE:  
**FENCING AND GATE DETAILS**

DRAWN BY: P. ISAAC, J. TRINH  
DATE: 2022-07-27  
REVIEWED BY: S. PARENT  
APPROVED BY: D. MATICHUK  
ISSUED DATE: 2022-07-27  
DRAWING NUMBER: **L102**  
REVISION NUMBER: **1**  
PROJECT #:  
PROJECT #:

DO NOT SCALE THE DRAWINGS. USE FIGURE DIMENSIONS ONLY. THE CONTRACTOR IS RESPONSIBLE FOR VERIFYING ALL DIMENSIONS AND NOTIFYING THE ARCHITECT OF ANY DISCREPANCIES BEFORE CONSTRUCTION COMMENCES. THE DRAWINGS TO BE READ IN CONJUNCTION WITH ALL STRUCTURAL, MECHANICAL, ELECTRICAL, CIVIL AND OTHER CONSULTANT DRAWINGS. THIS DRAWING SHALL NOT BE USED FOR CONSTRUCTION PURPOSES UNLESS SIGNED BY THE ARCHITECT. COPYRIGHT RESERVED. ALL PARTS OF THE DRAWING ARE THE EXCLUSIVE PROPERTY OF THE ARCHITECT AND SHALL NOT BE USED WITHOUT THE EXPRESSED PERMISSION FROM THE ARCHITECT.



AVAILABLE OPTIONS:

**POWDER COATING**  
12 AVAILABLE COLORS, CUSTOM COLORS (INCLUDING THE RAL RANGE AT AN ADDITIONAL COST)  
ALL POWDER COAT FINISHES ARE DONE AT VICTOR STANLEY, INC. (VSI) TO MATCH THE VSI PRODUCT LINE)  
OTHER FINISHES: GALVANIZED (SPECIAL QUOTE NEEDED)

**NOTES:**  
1. DRAWINGS NOT TO SCALE. DO NOT SCALE DRAWINGS.  
2. ALL FABRICATED METAL COMPONENTS ARE STEEL, SHOTBLASTED, ETCHED, PHOSPHATIZED, PREHEATED, AND ELECTROSTATISTICALLY POWDER-COATED WITH T.O.I.C. POLYESTER POWDER COATINGS. PRODUCTS ARE FULLY CLEANED AND PREHEATED, PREHEATED AND COATED WHILE HOT TO FULL DRYNESS AND BULLO COATING FILM. COATED PARTS ARE THEN FULLY CURED TO COATING MANUFACTURER'S SPECIFICATIONS. THE THICKNESS OF THE RESULTING FINISH AVERAGES 8-10 MILS (200-250 MICROMETERS).  
3. IT IS NOT RECOMMENDED TO LOCATE ANCHOR BOLTS UNTIL THE BIKE RACK IS IN PLACE. THIS SECURE SITE DESIGN, L.L.C. PRODUCT MUST BE PERMANENTLY AFFIXED TO THE GROUND. CONSULT YOUR LOCAL CODES FOR REGULATIONS.  
4. ANCHOR BOLTS NOT PROVIDED BY SECURE SITE DESIGN L.L.C.  
5. ALL SPECIFICATIONS ARE SUBJECT TO CHANGE. CONTACT MANUFACTURER FOR DETAILS.  
6. THIS PRODUCT IS SHIPPED FULLY ASSEMBLED.

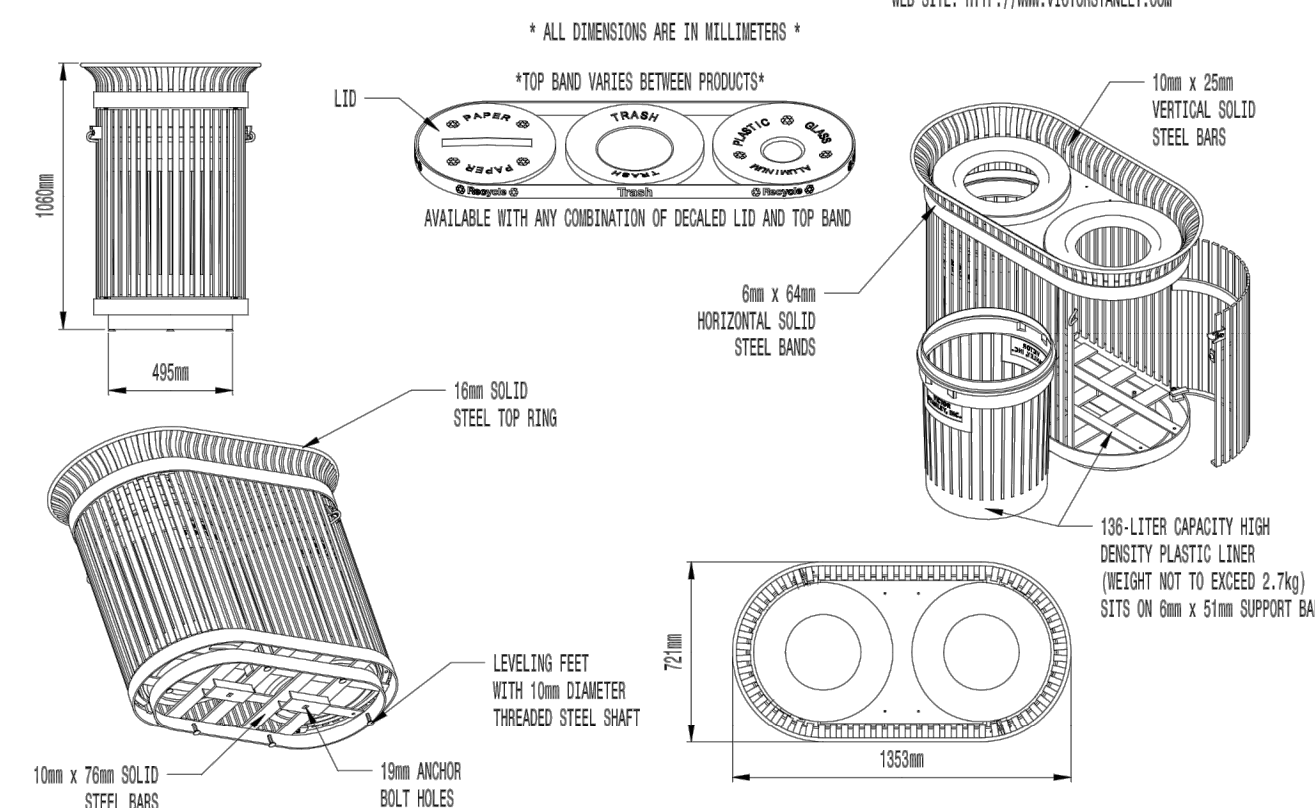
**MOUNTING**  
STANDARD IN-GROUND AND SURFACE (AS SHOWN)



COPYRIGHT 2011 SECURE SITE DESIGN, L.L.C. ALL RIGHTS RESERVED  
REV. 5/15/11 DRAWN R.J.C. 2010-323



P.O. DRAWER 300 - DUNCKIN, MD 20754 USA  
TOLL FREE: (800) 386-2579 (USA & CANADA)  
TEL: (301) 855-8300 - FAX: (410) 257-7579  
WEB SITE: HTTP://WWW.VICTORSTANLEY.COM



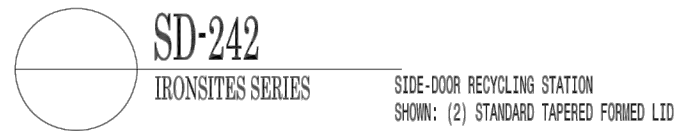
AVAILABLE OPTIONS:

**POWDER COATING**  
10 STANDARD COLORS, 2 OPTIONAL METALLIC COLORS, CUSTOM COLORS (INCLUDING THE RAL RANGE)

**SECURITY**  
STANDARD WITH LOCKABLE LATCH (AS SHOWN). AVAILABLE WITH OPTIONAL KEYS  
LOCK BOX. LID SOLID IN PLACE. AVAILABLE WITH OPTIONAL MOUNT WITH 3 IN-LINE ANCHOR HOLES AND OPTIONAL BOTTOM PLATE COVER.

**NOTES:**  
1. DRAWINGS NOT TO SCALE. DO NOT SCALE DRAWINGS.  
2. ALL FABRICATED METAL COMPONENTS ARE STEEL, SHOTBLASTED, ETCHED, PHOSPHATIZED, PREHEATED, AND ELECTROSTATISTICALLY POWDER-COATED WITH T.O.I.C. POLYESTER POWDER COATINGS. PRODUCTS ARE FULLY CLEANED AND PREHEATED, PREHEATED AND COATED WHILE HOT TO FULL DRYNESS AND BULLO FILM COATING. COATED PARTS ARE THEN FULLY CURED TO COATING MANUFACTURER'S SPECIFICATIONS. THE THICKNESS OF THE RESULTING FINISH AVERAGES 8-10 MILS (200-250 MICROMETERS).  
3. OIL IMPREGNATED BRONZE BUSHINGS AND STAINLESS STEEL FITTING PINS FOR DOOR MOVEMENT, STANDARD 6mm SOLID STEEL LATCH ASSEMBLY OR OPTIONAL PATENTED STAINLESS STEEL KEYS LOCK ASSEMBLY.  
4. THIS VICTOR STANLEY, INC. PRODUCT MUST BE PERMANENTLY AFFIXED TO THE GROUND. CONSULT YOUR LOCAL CODES FOR REGULATIONS.  
5. VICTOR STANLEY, INC. PLASTIC LINER LIDERS ARE BULGED ON TOOLING DESIGNED FOR AND OWNED BY VICTOR STANLEY, INC. THEY OFFER MAXIMUM CAPACITY AND STRENGTH WITH LIGHTWEIGHT CONSTRUCTION USING CRITICAL WELDED JOINTS, INTERNAL WINDINGS, AND HIGH-STRENGTH MATERIALS. THIS REDUCES HANDLING DIFFICULTY AND FACILITATES EASY EMPTYING AND STORAGE WHILE AFFORDING LONG SERVICE LIFE.  
6. ANCHOR BOLT NOT PROVIDED BY VICTOR STANLEY, INC.  
7. FOR HIGH SALT AMBIENT CLIMATES, HOT-DIP GALVANIZING BEFORE POWDER COATING IS AVAILABLE. HOT-DIP GALVANIZING IS PERFORMED FOR VICTOR STANLEY, INC. BY AN EXPERIENCED QUALIFIED FIRM TO WHICH PRODUCTS ARE SHIPPED FOR GALVANIZING. HOT-DIP GALVANIZING INCLUDES AN AGGRESSIVE PRE-TREATMENT AND IMMERSION IN A TANK OF CHARGED LIQUID ZINC AT OR AROUND 880°F (480°C). THE RESULTING SURFACE IS RESISTANT TO RUST BUT HAS SOME UNEVENNESS RESULTING FROM THE BONDING OF THE ZINC TO THE STEEL SURFACE. AS A RESULT, THE POWDER-COATING SURFACE FINISH OVER THAT GALVANIZED SURFACE MAY EXHIBIT BUMPS, UNEVENNESS, AND MAY NOT BE AS SMOOTH AS THE STANDARD FINISH; THIS UNEVEN AND INCONSISTENT FINISH IS NORMAL FOR GALVANIZING. CONTACT MANUFACTURER FOR DETAILS.  
8. ALL SPECIFICATIONS ARE SUBJECT TO CHANGE. CONTACT MANUFACTURER FOR DETAILS.  
9. THIS PRODUCT IS SHIPPED FULLY ASSEMBLED.

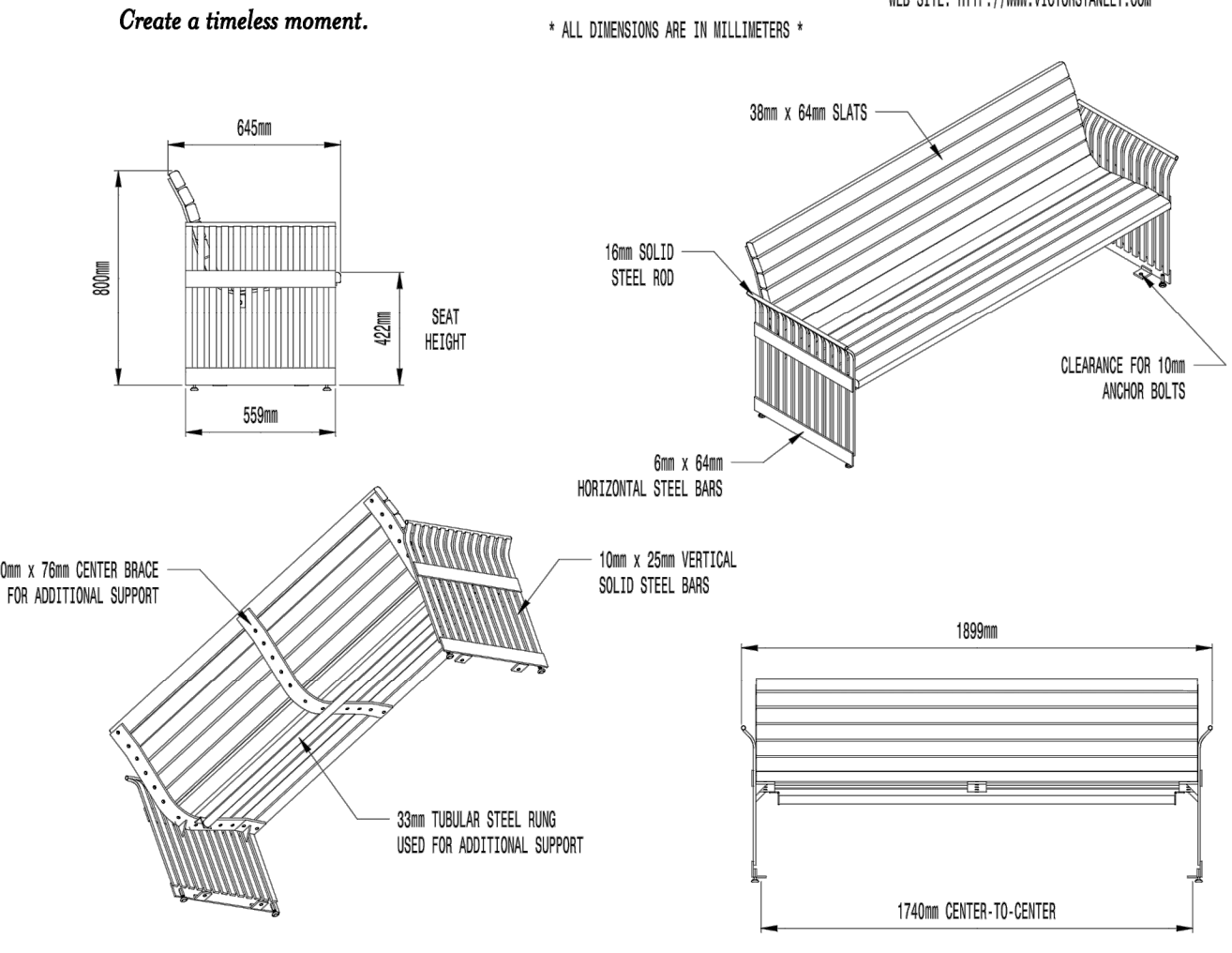
**LIDS**  
STANDARD WITH TAPERED FORMED LID (AS SHOWN). AVAILABLE WITH OPTIONAL DOME LID, DOME LID WITH ASHTRAY, BAIN BONNET LID, BAIN BONNET LID WITH ASHTRAY, CONVEY LID, CONVEY LID WITH SELF-CLOSING DOOR, ENCLOSED DOME LID, ENCLOSED DOME LID WITH STAINLESS STEEL ASHTRAY, AND RECYCLE LIDS. ASHTRAYS AVAILABLE WITH OPTIONAL ASHTRAY COVER.  
CUSTOM PLACES & DECALS  
AVAILABLE WITH STEEL PLAKES IN VARIOUS SIZES AND PRESSURE SENSITIVE VINYL OUTDOOR DECALS.



COPYRIGHT 2014 VICTOR STANLEY, INC. ALL RIGHTS RESERVED  
REV. 6/2/14 DRAWN C.B.B. 2014-510



P.O. DRAWER 300 - DUNCKIN, MD 20754 USA  
TOLL FREE: (800) 386-2579 (USA & CANADA)  
TEL: (301) 855-8300 - FAX: (410) 257-7579  
WEB SITE: HTTP://WWW.VICTORSTANLEY.COM



AVAILABLE OPTIONS:

**POWDER COATING**  
10 STANDARD COLORS, 2 OPTIONAL METALLIC COLORS, CUSTOM COLORS (INCLUDING THE RAL RANGE)

**SLAT TYPES**  
LPE WOOD (AS SHOWN) OR 2nd SITE SYSTEMS REINFORCED RECYCLED PLASTIC SLATS  
2nd SITE SYSTEMS COLORS: GRAY, MAPLE, CHERRY, AND WALNUT

**NOTES:**  
1. DRAWINGS NOT TO SCALE. DO NOT SCALE DRAWINGS.  
2. ALL FABRICATED METAL COMPONENTS ARE STEEL, SHOTBLASTED, ETCHED, PHOSPHATIZED, PREHEATED, AND ELECTROSTATISTICALLY POWDER-COATED WITH T.O.I.C. POLYESTER POWDER COATINGS. PRODUCTS ARE FULLY CLEANED AND PREHEATED, PREHEATED AND COATED WHILE HOT TO FULL DRYNESS AND BULLO COATING FILM. COATED PARTS ARE THEN FULLY CURED TO COATING MANUFACTURER'S SPECIFICATIONS. THE THICKNESS OF THE RESULTING FINISH AVERAGES 8-10 MILS (200-250 MICROMETERS).  
3. IT IS NOT RECOMMENDED TO LOCATE ANCHOR BOLTS UNTIL BENCH IS IN PLACE. THIS VICTOR STANLEY, INC. PRODUCT MUST BE PERMANENTLY AFFIXED TO THE GROUND. CONSULT YOUR LOCAL CODES FOR REGULATIONS.  
4. ANCHOR BOLTS NOT PROVIDED BY VICTOR STANLEY, INC.  
5. FOR HIGH SALT AMBIENT CLIMATES, HOT-DIP GALVANIZING BEFORE POWDER COATING IS AVAILABLE. HOT-DIP GALVANIZING IS PERFORMED FOR VICTOR STANLEY, INC. BY AN EXPERIENCED QUALIFIED FIRM TO WHICH PRODUCTS ARE SHIPPED FOR GALVANIZING. HOT-DIP GALVANIZING INCLUDES AN AGGRESSIVE PRE-TREATMENT AND IMMERSION IN A TANK OF CHARGED LIQUID ZINC AT OR AROUND 880°F (480°C). THE RESULTING SURFACE IS RESISTANT TO RUST BUT HAS SOME UNEVENNESS RESULTING FROM THE BONDING OF THE ZINC TO THE STEEL SURFACE. AS A RESULT, THE POWDER-COATING SURFACE FINISH OVER THAT GALVANIZED SURFACE MAY EXHIBIT BUMPS, UNEVENNESS, AND MAY NOT BE AS SMOOTH AS THE STANDARD FINISH; THIS UNEVEN AND INCONSISTENT FINISH IS NORMAL FOR GALVANIZING. CONTACT MANUFACTURER FOR DETAILS.  
6. ALL SPECIFICATIONS ARE SUBJECT TO CHANGE. CONTACT MANUFACTURER FOR DETAILS.  
7. THIS PRODUCT IS SHIPPED PARTIALLY UNASSEMBLED.



COPYRIGHT 2017 VICTOR STANLEY, INC. ALL RIGHTS RESERVED  
REV. 8/28/17 DRAWN V.F.T. 2017-735



KEY PLAN:

FILE NUMBER: PROJECT NUMBER:

RECORD OF REVISIONS:	
6	ISSUED FOR SITE PLAN APPROVAL
5	
4	
3	
2	
1	

ISSUED FOR SITE PLAN APPROVAL 2022-09-26

NUMBER: REVISION: DATE: (MM/DD/YYYY)

PROFESSIONAL STAMP:



CIVITAS ARCHITECTURE INC. OTTAWA, ON 1-613-742-7482  
14 CHAMBERLAIN AVENUE, SUITE 101 CANADA K1S 1V9 WWW.CIVITAS-INC.CA

CONSULTANT LOGO:

PROJECT TITLE:  
**NEW WAREHOUSE & CROSS DOCK FACILITY**  
301 SOMME STREET, OTTAWA, ON

DRAWING TITLE:  
**FENCING AND GATE DETAILS**

DRAWN BY: S. PARENT DRAWING NUMBER:  
DATE: 2022-09-26  
REVIEWED BY: S. PARENT  
APPROVED BY: D. MATICHUK  
PRINT DATE: REVISION NUMBER:  
ISSUED DATE: 2022-09-26

**L103**

CLIENT PROJECT #: PROJECT #:  
**2001**

DO NOT SCALE THE DRAWINGS. USE FIGURE DIMENSIONS ONLY. THE CONTRACTOR IS RESPONSIBLE FOR VERIFYING ALL DIMENSIONS AND NOTIFYING THE ARCHITECT OF ANY DISCREPANCIES BEFORE CONSTRUCTION COMMENCES. THE DRAWING IS TO BE READ IN CONJUNCTION WITH ALL STRUCTURAL, MECHANICAL, ELECTRICAL, CIVIL AND OTHER CONSULTANT DRAWINGS. THIS DRAWING SHALL NOT BE USED FOR CONSTRUCTION PURPOSES UNLESS SIGNED BY THE ARCHITECT. COPYRIGHT RESERVED. ALL PARTS OF THIS DRAWING ARE THE EXCLUSIVE PROPERTY OF THE ARCHITECT AND SHALL NOT BE USED WITHOUT THE EXPRESSED PERMISSION FROM THE ARCHITECT.