

DRAWING NOTES

- 1 BLUE TINTED THERMAL UNITS
- 2 SOLAR CONTROLLED STEEPLY C/W SOLI ORANGE THERMAL UNITS
- 3 KALI PANELS, SILVER METALLIC FINISH, TYPICAL
- 4 PROMINENT RIDGED METAL SLOPE, DARK GREY
- 5 SHOWROOM ENTRANCE AND VESTIBULE, PROXIMA WOOD GRAIN PANELS
- 6 CONTINUOUS LED STRIP LIGHTING AROUND PERIMETER
- 7 SHOP WINDOWS, CLEAR THERMAL UNITS C/W BUTT SILICONE JOINTS FINISH, TYPICAL
- 8 ALL ALUMINUM ENTRANCES AND O/H DOORS TO BE CLEAR ANODIZED FINISH, TYPICAL
- 9 PAINTED STEEL DOORS TO BE DARK GREY TO MATCH SLOPE
- 10 VOLVO WOODWORK AS PER VOLVO SIGN PROGRAM
- 11 COUNTERTOP WAVE SIGN AS PER VOLVO SIGN PROGRAM
- 12 SERVICE SIGN AS PER SIGN PROGRAM

NOTES

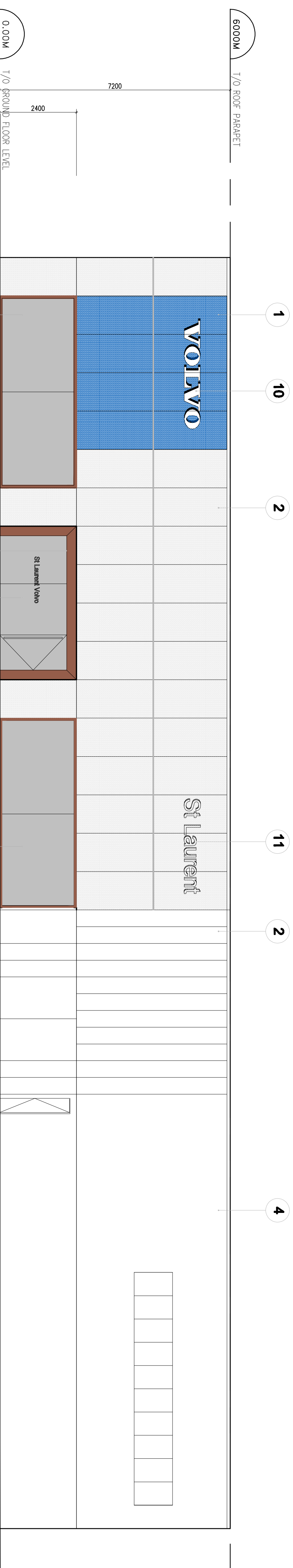
It is the responsibility of the appropriate authority to ensure that all drawings on site and report all errors and/or omissions to the Architect.
All contractors must comply with all pertinent codes and by-laws.
Do not scale drawings.
This drawing may not be used for construction until signed by the Architect.
Copyright reserved.

LOCATION MAP



LEGAL DESCRIPTION

PART OF LOTS 17 AND 18
REGISTERED PLAN 23
CITY OF OTTAWA



WEST ELEVATION

1 WEST ELEVATION
A005 SCALE: 1:75

no.	date	revision	Stamp:
3	29 JUL. 2022	ISSUED FOR REVIEW	
2	26 MAY 2022	ISSUED FOR REVIEW	
1	12 OCT. 2021	ISSUED FOR REVIEW	

brian k. clark
A·R·C·H·I·T·E·C·T
141 Catherine Street, Suite 102
Ottawa, Ontario K2P 1C3
TEL: (613) 235-7412 • FAX: 235-1799
Email: bksarchitect@omni.ca

VOLVO ST. LAURENT
1300 MICHAEL STREET
OTTAWA, ONTARIO

WEST ELEVATION

Project No: **1811** Drawn By: **DC** Scale: **1 : 75**
North Arrow: Date: **12-OCT-2021**
Drawing No: **A005**

DRAWING NOTES

- ① BLUE TINTED THERMAL UNITS
- ② SOLERA CURTAINWALL SYSTEM C/W SEMI OPAQUE THERMAL UNITS
- ③ ACM PANELS, SILVER METALLIC FINISH, TYPICAL
- ④ PREFINISHED RIBBED METAL SIDING, DARK GREY
- ⑤ SHOWROOM ENTRANCE AND VESTIBULE, PRODEMA WOOD GRAN PANELS
- ⑥ CONTINUOUS LED STRIP LIGHTING AROUND PERIMETER
- ⑦ SHOP WINDOWS, CLEAR THERMAL UNITS C/W BUTT SILICONE JOINTS
- ⑧ ALL ALUMINUM ENTRANCES AND O/H DOORS TO BE CLEAR ANODIZED FINISH, TYPICAL
- ⑨ PAINTED STEEL DOORS TO BE DARK GREY TO MATCH SIDING
- ⑩ VOLVO WOODMARK AS PER VOLVO SIGN PROGRAM
- ⑪ DEALERSHIP NAME SIGN AS PER VOLVO SIGN PROGRAM
- ⑫ SERVICE SIGN AS PER SIGN PROGRAM

NOTES

It is the responsibility of the appropriate contractor to check and verify all dimensions on site and report all errors and or omissions to the Architect.
 All contractors must comply with all pertinent codes and by-laws.
 Do not scale drawings.
 This drawing may not be used for construction until signed by the Architect.
 Copyright reserved.

LOCATION MAP



LEGAL DESCRIPTION

PART OF LOTS 17 AND 18
 REGISTERED PLAN 23
 CITY OF OTTAWA



EAST ELEVATION

1 EAST ELEVATION
 A007 SCALE: 1:75

no.	date	revision
3	26 JUL. 2022	ISSUED FOR REVIEW
2	26 MAY 2022	ISSUED FOR REVIEW
1	12 OCT. 2021	ISSUED FOR REVIEW

Stamp:

brian k. clark
ARCHITECT
 141 Catherine Street, Suite 102
 Ottawa, Ontario K2P 1C3
 TEL: (613) 238-7412 · FAX: 238-1799
 Email: bkclarkarchitect@on.albn.com

Project:
 VOLVO ST. LAURENT
 1300 MICHAEL STREET
 OTTAWA, ONTARIO

Ottawa Ontario
 Drawing:
EAST ELEVATION

Project No. 1811 Drawn By: DC Scale: 1 : 75
 Date: 12-OCT-2021
 North Arrow:

Drawing No. **A007**

D007-12-22-0012
18651

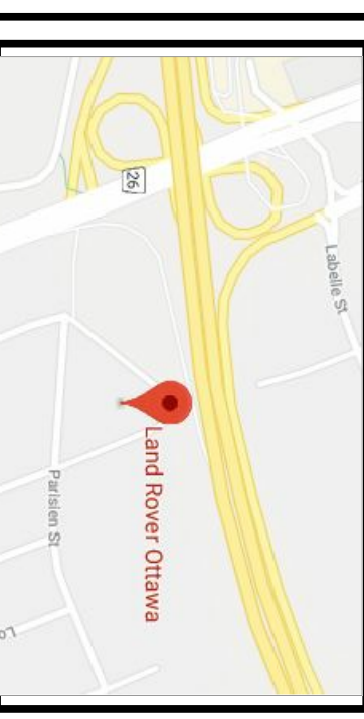
DRAWING NOTES

- 1 BLUE TINTED THERMAL UNITS
- 2 SOLAR CONTROLLED STEEL C/W S&W DOUBLE THERMAL UNITS
- 3 K&I PANELS, SILVER METALLIC FINISH, TYPICAL
- 4 PROMINENT HIBRID METAL STONE, DARK GREY
- 5 SHOWROOM ENTRANCE AND VESTIBULE, PROMINA WOOD GRAIN PANELS
- 6 CONTIGUOUS LED STRIP LIGHTING AROUND PERIMETER
- 7 SHOP WINDOWS, CLEAR THERMAL UNITS C/W BUTT SILICONE JOINTS FINISH, TYPICAL
- 8 ALL ALUMINIUM ENTRANCES AND O/H DOORS TO BE CLEAR ANODIZED FINISH, TYPICAL
- 9 PAINTED STEEL DOORS TO BE DARK GREY TO MATCH STONE
- 10 VOLVO WOODWORK AS PER VOLVO SIGN PROGRAM
- 11 GOLFESBERG WINE SIGN AS PER VOLVO SIGN PROGRAM
- 12 SERVICE SIGN AS PER SIGN PROGRAM

NOTES

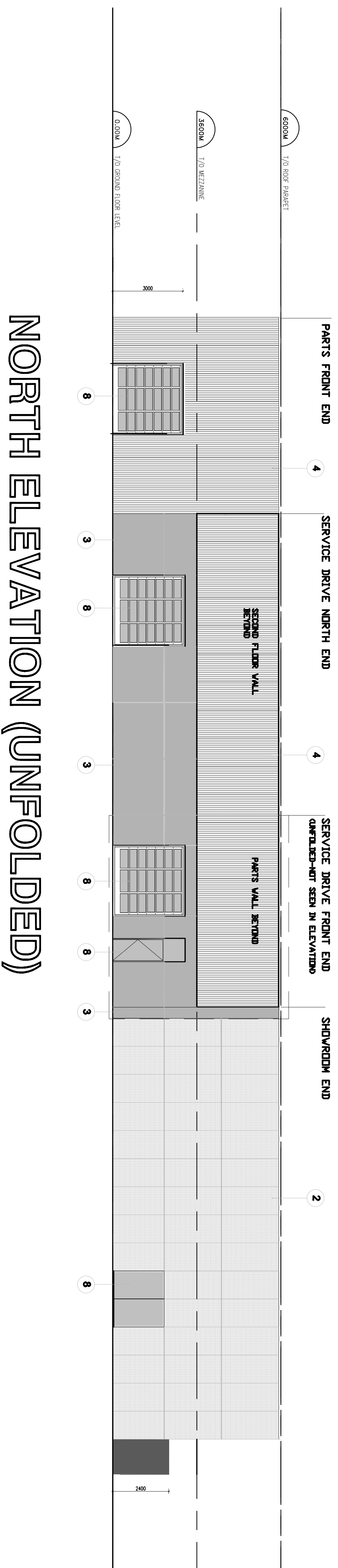
It is the responsibility of the appropriate authority to ensure that all information on site and report all errors and/or omissions to the Architect.
All contractors must comply with all pertinent codes and by-laws.
Do not scale drawings.
This drawing may not be used for construction until signed by the Architect.
Copyright reserved.

LOCATION MAP



LEGAL DESCRIPTION

PART OF LOTS 17 AND 18
REGISTERED PLAN 23
CITY OF OTTAWA



NORTH ELEVATION (UNFOLDED)

1 NORTH ELEVATION UNFOLDED
SCALE: 1:100
A008

no.	date	revision	Stamp:
3	28 JUL 2022	ISSUED FOR REVIEW	
2	26 MAY 2022	ISSUED FOR REVIEW	
1	12 OCT. 2021	ISSUED FOR REVIEW	

brian k. clark
A·R·C·H·I·T·E·C·T
141 Catherine Street, Suite 102
Ottawa, Ontario K2P 1C3
TEL: (613) 235-7412 • FAX: 235-1799
Email: bkc@architect.com

VOLVO ST. LAURENT
1300 MICHAEL STREET
OTTAWA, ONTARIO

NORTH ELEVATION
OTTAWA, ONTARIO

Project No: **1811** Drawn By: **DC** Scale: **1 : 100**
North Arrow: Date: **12-OCT-2021**
Drawing No: **A008**