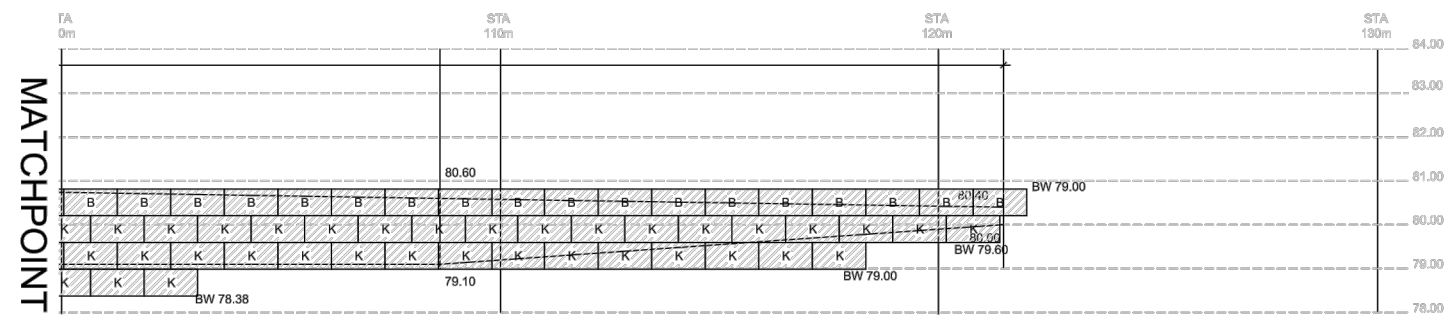
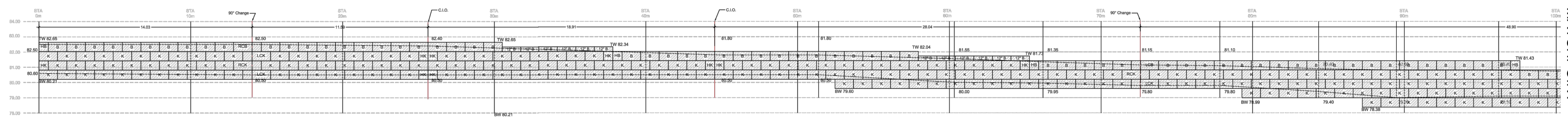


COPYRIGHT RESERVED
 THE CONTRACTOR SHALL VERIFY AND BE RESPONSIBLE OF ALL DIMENSIONS. DO NOT SCALE THE DRAWING. ANY ERRORS OR OMISSIONS SHALL BE REPORTED TO BLANCHARD LETENDRE ENGINEERING LTD. WITHOUT DELAY. THE CONTRACTOR'S ALL LEGS AND DRAWINGS ARE THE PROPERTY OF BLANCHARD LETENDRE ENGINEERING LTD. REPRODUCTION OR USE FOR ANY PURPOSE OTHER THAN THAT AUTHORIZED BY BLANCHARD LETENDRE ENGINEERING LTD. IS STRICTLY PROHIBITED.



MATCHPOINT

MATCHPOINT

NO.	DATE	DESCRIPTION

REVISIONS ISSUED:

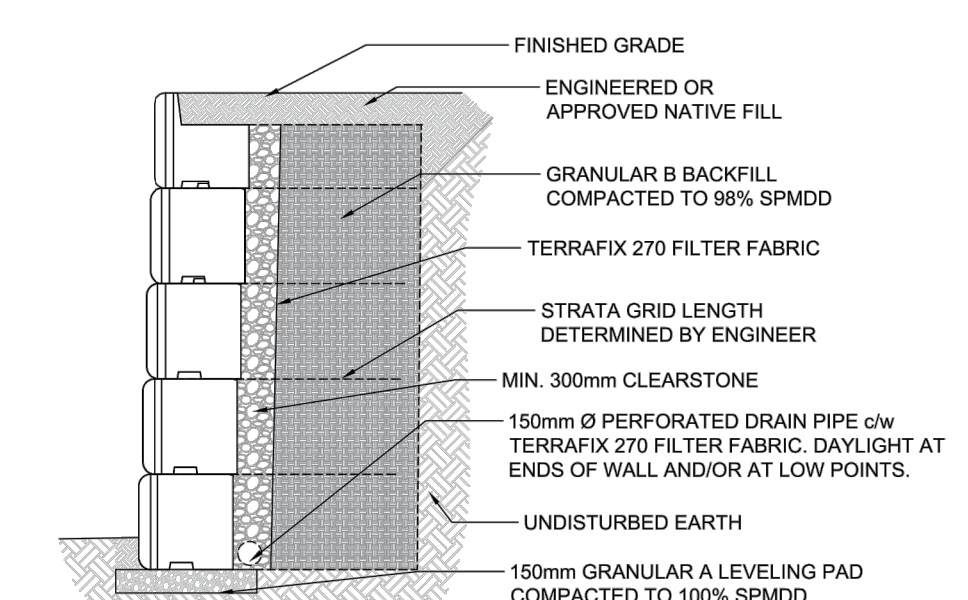
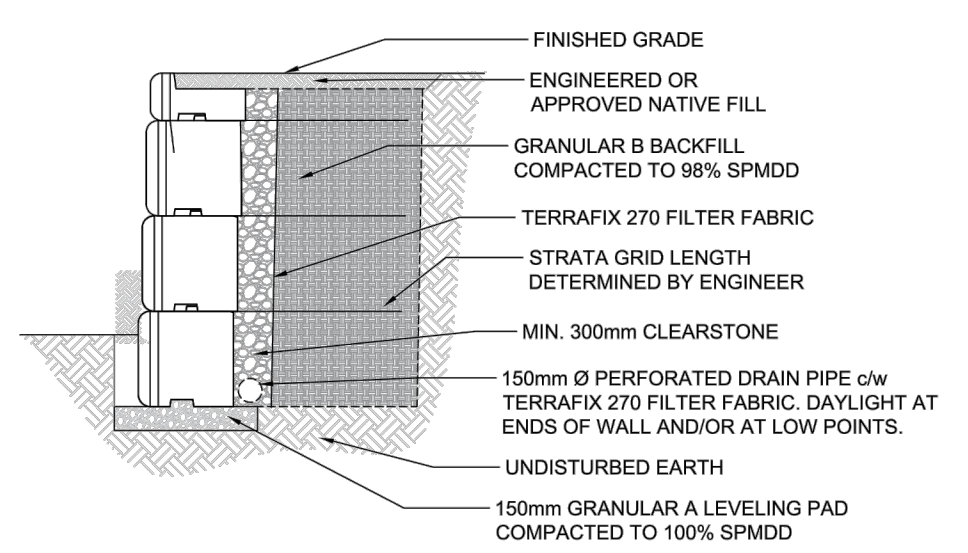
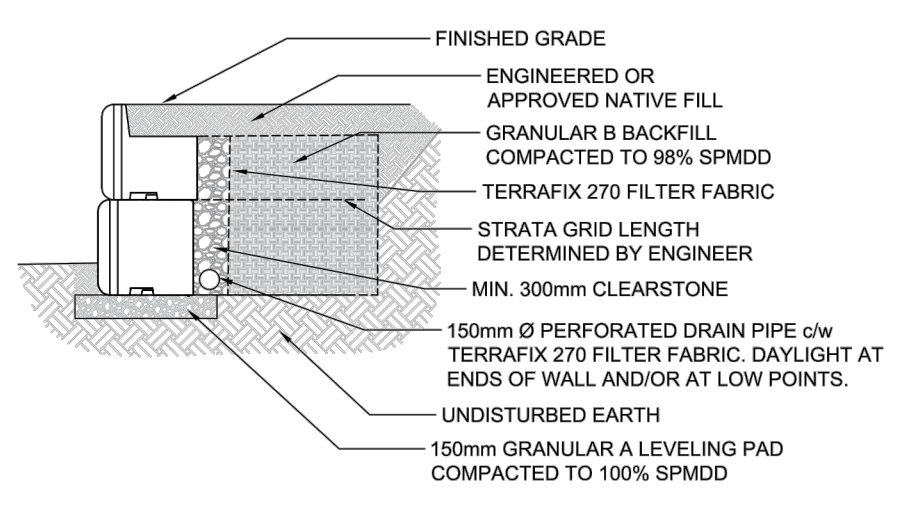
THIS DRAWING IS FOR CONSTRUCTION ONLY. IT IS NOT TO BE USED FOR CONSTRUCTION UNLESS APPROVED BY THE ENGINEER. ANY CHANGES TO THIS DRAWING MUST BE APPROVED BY THE ENGINEER. THIS DRAWING IS NOT TO BE USED FOR CONSTRUCTION UNLESS APPROVED BY THE ENGINEER. ANY CHANGES TO THIS DRAWING MUST BE APPROVED BY THE ENGINEER.

100 MATHEWSON BLVD. S. UNIT #201,
 MISSISSAUGA, ON L4Z 1A7
 Phone: (905) 840-9532
 Fax: (905) 840-9512



4765 16TH AVE. S. UNIT 101
 KING, ON L8E 4E4
 Phone: (905) 864-9658
 Fax: (905) 864-9618

PROJECT:	OLIGO DEVELOPMENTS
LOCATION:	996-B ST. AUGUSTIN RD. EMBRUN, ON
DRAWING DESCRIPTION:	ELEVATION, CROSS SECTIONS, & LAYOUT
REFERENCE:	BASED ON INFORMATION FOUND ON GRADING PLANS DATED 02-2021 BY: BF/EG/DATE: 02-2021
DRAWN BY:	DS
CHECKED BY:	
DATE STARTED:	2021-02-26
PROJECT NO.:	EST12897
SHEET NO.:	1



DNM Stone Terra™ PRELIMINARY BLOCK COUNT

12" BENCH	12'B	12
FULL BENCH	B	83
HALF BENCH	HB	4
LEFT BENCH	LCB	1
RIGHT BENCH	RCB	1
12" KEYED	12'K	0
FULL KEYED	K	254
HALF KEYED	HK	9
LEFT KEYED	LCK	3
RIGHT KEYED	RCK	2

SG350 - 5 ROLLS

GENERAL NOTES:

- THE FOLLOWING NOTES SHALL GOVERN UNLESS NOTED OTHERWISE ON THE DRAWINGS.
- THESE DRAWINGS ARE TO BE READ IN CONJUNCTION WITH ALL PROJECT DRAWINGS AND CONTRACT DOCUMENTS.
- PRIOR TO COMMENCING WORK THE CONTRACTOR WILL VERIFY ALL MEASUREMENTS AND CONDITIONS ON SITE AND REPORT TO THE ENGINEER ANY DISCREPANCIES OR UNSATISFACTORY CONDITIONS THAT MAY AFFECT THE PROPER COMPLETION OF WORK.
- SEE FIELD CONSTRUCTION MANUAL FOR INSTALLATION DETAILS.
- DRAWINGS ARE METRIC AND NOT TO BE SCALED.
- OUTSIDE CURVES WILL REQUIRE BACKS OF BLOCKS TO BE TRIMMED.
- CONTRACTORS CONSTRUCTION LOADS MUST NOT EXCEED THE ABOVE DESIGN LOADS. DESIGN LOADS MAY ONLY BE APPLIED AFTER THE WALL HAS BEEN INSTALLED AND APPROVED.

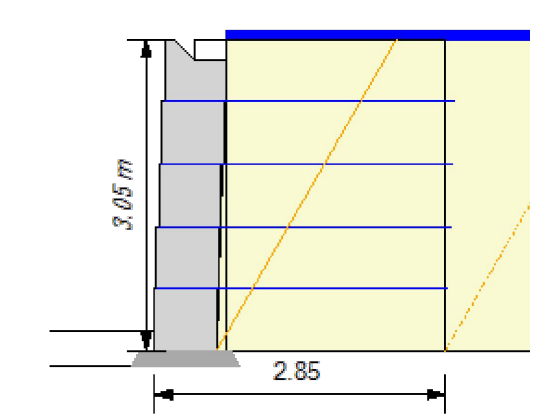
SOIL AND BACKFILL:

- SPECIFIED SOIL BEARING CAPACITY MUST BE VERIFIED BY A GEOTECHNICAL ENGINEER PRIOR TO COMMENCING CONSTRUCTION OF THE FOUNDATION. CONDITIONS FOUND TO BE UNSATISFACTORY IN BEARING CAPACITY MUST BE REPORTED TO THE PROJECT GEOTECHNICAL ENGINEER.
- FOUNDATIONS MUST BEAR ON SUITABLE MATERIAL.
- BACKFILL TO BE INSTALLED AND COMPACTED IN LIFTS NOT GREATER THAN 200mm WHERE HEAVY EQUIPMENT IS USED AND 150mm WHERE HAND OPERATED EQUIPMENT IS USED. HAND OPERATED EQUIPMENT MUST BE USED WHEN WITHIN 1m OF THE WALL.



REA Analysis

Project: Olgin Development
 Location: Ottawa
 Designer: ds
 Date: 2021-02-26
 Section: Section 1
 Design Method: CAN_CSA_S6
 Design Unit: StoneTerra



SOIL PARAMETERS

Reinforced Soil:	φ	coh	γ
30 deg	0.00 kNpsm	18.85 kNpcm	
Retained Soil:	30 deg	0.00 kNpsm	18.85 kNpcm
Foundation Soil:	30.00 deg	0.00 kNpsm	18.85 kNpcm

Leveling Pad: Crushed Stone

GEOMETRY

Design Height:	3.05 m	Live Load:	2.40 kNpsm
Wall Batter/Tilt:	2.4/ 0.00 deg	Live Load Offset:	0.00 m
Embedment:	0.20 m	Live Load Width:	6.00 m
Leveling Pad Depth:	0.15 m	Dead Load:	0.00 kNpsm
Slope Angle:	0.0 deg	Dead Load Offset:	0.0 m
Slope Length:	0.0 m	Dead Load Width:	0.00 m
Slope Toe Offset:	0.0 m	Leveling Pad Width:	0.91 m



RESULTS

CDR Sliding:	1.54 (fnd)	CDR Bearing:	3.61
Eccentricity (e/L):	0.13	Bearing:	83.09; srvc 71.37
FoS Connection:	1.68		

ID	Height	Length	Geogrid	Ta (Ta/Rt)	% Cvr	EP (Pa)	LL (Pa)	DL (Pa)	Tmax	CDR Str	Tallow	Cn	CDR Pk	CDR POI	CDR Slidg	Grid
1	2.44	2.85	SG350	32.04	100	3.30	1.25	0.00	4.54	7.05	11.31	2.49	1.74(3.30)	93.20	0.93	
2	1.83	2.85	SG350	32.04	100	5.85	0.83	0.00	6.68	4.80	15.62	2.34	2.64(5.85)	29.74	1.26	
3	1.22	2.85	SG350	32.04	100	8.77	0.83	0.00	9.59	3.34	19.93	2.08	3.33(8.77)	14.87	1.59	
4	0.61	2.85	SG350	32.04	100	11.68	0.83	0.00	12.51	2.56	21.06	1.68	2.74(11.68)	9.07(1.54)	1.91	

Column Descriptions:
 Ta: allowable geogrid strength
 Rc %: percent coverage for geosynthetics
 EP (Pa) internal active earth pressure
 LL (Pa) earth pressure due to live load surcharge
 DL (Pa) earth pressure due to dead load surcharge
 Tmax maximum earth pressure on geosynthetic layer
 FSstr factor of safety on geogrid strength (Ta/Tmax)
 Ta on allowable tension on the connection
 FS Pkon, factor of safety on the connection (Ta cn/Tmax)
 FS PO, factor of safety on pullout (Ta pullout/(Tmax - LL)
 Grid Embedment, depth of embedment beyond the theoretical failure plane.

ENGINEERING STAMP



#3	ISSUED FOR SPA	14/06/2022
#2	ISSUED FOR SPA	04/02/2022
#1	ISSUED FOR SPA	19/03/2021
NO.	REVISION	DATE (DDMMYYYY)

BLANCHARD LETENDRE ENGINEERING
 767, Notre Dame, Local 42, Embrun, Ontario,
 (613) 693-0700 K0A 1R1 blngengineering.ca

CLIENT:
BRIDOR DEVELOPMENTS
 996-B ST. AUGUSTIN RD.
 EMBRUN, ON

PROJECT:
NEW RESIDENTIAL DEVELOPMENT
 2380, 2396 CLEOROUX CRES,
 OTTAWA, ON

DRAWING:
DETAILS - 1

PAPER FORMAT:	24x36	PAGE:	C502
DRAWN BY:	BF + GB		
CHECKED BY:	GB		
DATE:	07-2022		
SCALE:			
PROJECT NUMBER:	20-305		