

Phase I ESA, Phase II ESA and RSC Property

PLAN OF SURVEY OF
PART OF BLOCKS B and C & PART OF HOBSON ROAD
 (Closed by By-law 2-93 Inst. N647611)
REGISTERED PLAN 787
 And
PART OF LOTS 42 and 43
REGISTERED PLAN 66
CITY OF OTTAWA
 Surveyed by Annis, O'Sullivan, Vollebek Ltd.

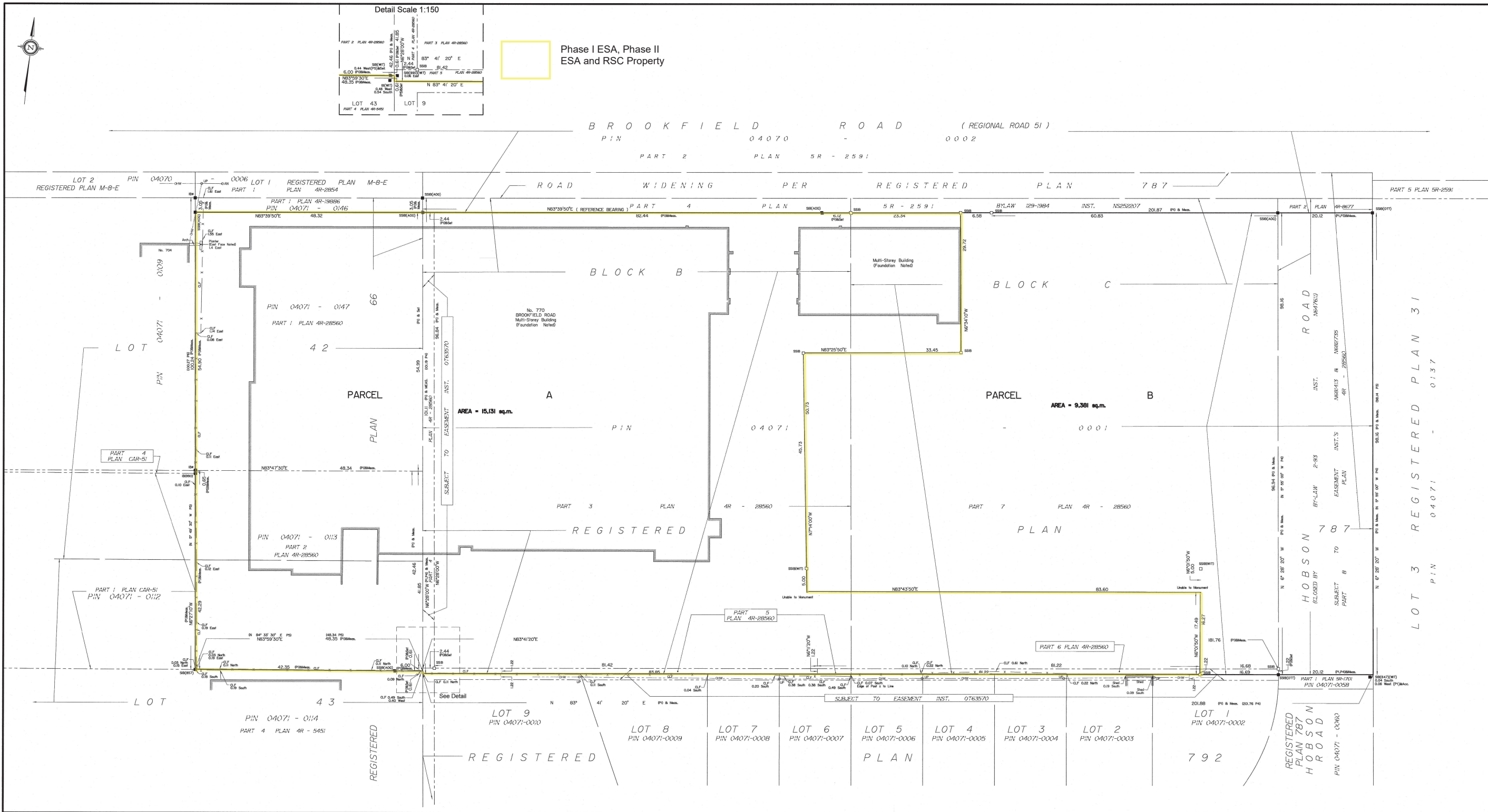


DISTANCES SHOWN ON THIS PLAN ARE IN METRES AND CAN BE CONVERTED TO FEET BY DIVIDING BY 3.2808

Surveyor's Certificate
 I CERTIFY THAT:
 1. This survey and plan are correct and in accordance with the Surveyors Act and the Regulations made under them.
 2. The survey was completed on the 30th day of November, 2020.
 Date: March 3, 2021
 Annis, O'Sullivan, Vollebek Ltd.
 Ontario Land Surveyor

- Notes & Legend
- D — Denotes Survey Monument Planted
 - S — Survey Monument Found
 - SB Standard Iron Bar
 - SSB Short Standard Iron Bar
 - IB Iron Bar
 - IBB Round Iron Bar
 - CP Concrete Pin
 - (WT) Witness
 - (ADG) Annis, O'Sullivan, Vollebek Ltd.
 - Meas. Measure
 - (P1) Plan 4R-19886
 - (P2) Plan 4R-28577
 - (P3) Registered Plan 787
 - (P4) Plan CAR-51
 - (P5) (B7) Plan, April 26, 2000
 - (P6) Plan 4R-28560
 - (P7) Board Fence
 - CLF Chain Link Fence
 - OW Overhead Wires
 - U Utility Pole
 - DZ Ditch
 - AK Accepted

Bearings are grid bearings, derived from northerly limit of Plan 4R-19886 having a bearing of N83°59'50"E and are referred to the Central Meridian of MTM Zone 8 (76°30' West Longitude) NAD83 (original).
 For bearing comparisons, a rotation of 0°34'10" counter-clockwise was applied to bearings on Registered Plan 787.
 For comparison purposes, bearings shown on Plan P1 are astronomic bearings.



ANNIS, O'SULLIVAN, VOLLEBEK LTD.
 14 Concourse Gate, Suite 500
 Nepean, ON K2E 7Z6
 Phone: (613) 727-8850 / Fax: (613) 727-1979
 Email: annis@anniso.com
 Ontario Land Surveyors Reg. No. 00063-19-31 P.L. 886 P.787 PDS 7