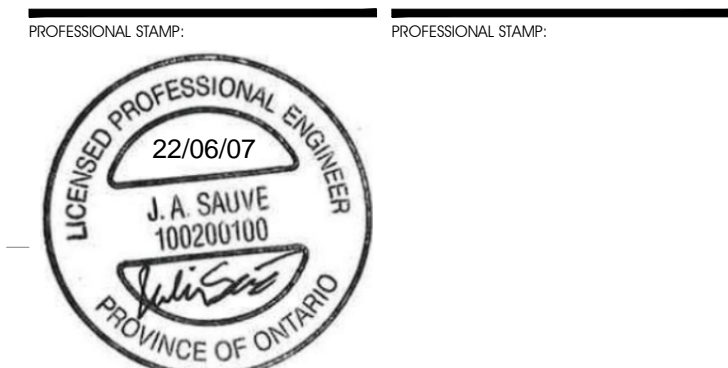


RECORD OF REVISIONS

NO.	REVISION	DATE
1	ISSUED FOR SITE PLAN CONTROL REV. 2	JUNE 7, 2022
2	ISSUED FOR SITE PLAN APPROVAL	DECEMBER 16, 2021

PRELIMINARY 33%
NOT FOR CONSTRUCTION



CIVITAS ARCHITECTURE INC. CIVITAS ON T. 613.742.7492
14 CHAMBERLAIN AVENUE, SUITE 101, CANADA K1S 1V9 WWW.CIVITAS-INC.CA
CONSULTANT LOGO

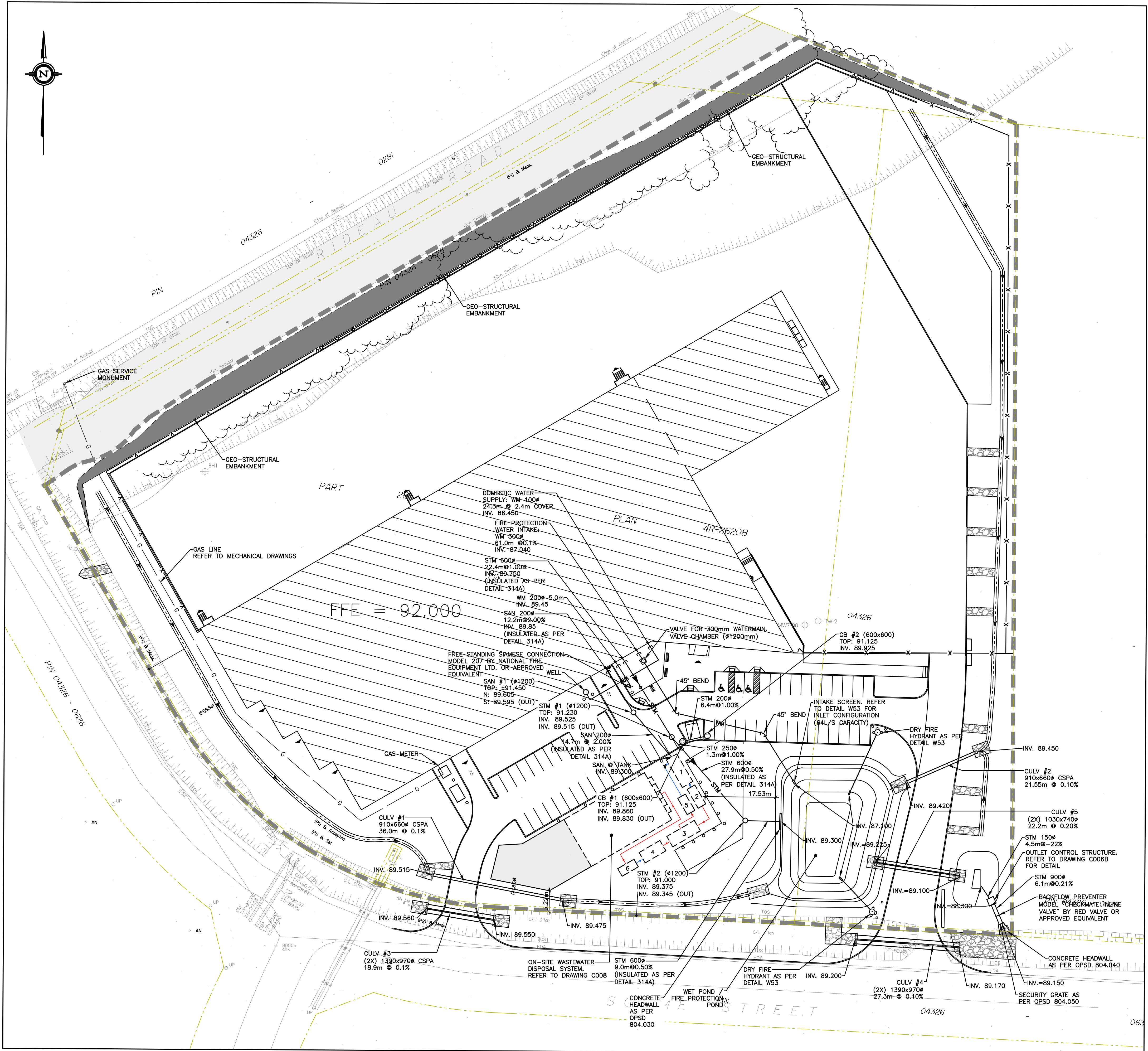
PROJECT TITLE:
FASTFRATE OTTAWA WAREHOUSE AND DISTRIBUTION FACILITY

SCALE: 1:500
SOMME ST. OTTAWA, ON

SITE SERVICING PLAN

DRAWN BY: D.CANN DRAWING NUMBER: **C007**
DATE: J.SAUVÉ
REVIEWED BY: J.SAUVÉ
APPROVED BY: J.SAUVÉ
ISSUED DATE: NOVEMBER 26, 2021 REVISION NUMBER:
CLIENT PROJECT #: **A001083** PROJECT #:

DO NOT SCALE THIS DRAWING. USE DIMENSIONS ONLY. THE CONTRACTOR IS RESPONSIBLE FOR VERIFYING ALL DIMENSIONS AND PROVIDING TO THE ARCHITECT OF ANY DISCREPANCIES BEFORE CONSTRUCTION COMMENCES. THE DRAWINGS TO BE READ IN CONJUNCTION WITH ALL STRUCTURAL, MECHANICAL, ELECTRICAL, CIVIL AND OTHER CONSULTANT DRAWINGS. THIS DRAWING SHALL BE USED FOR CONSTRUCTION PURPOSES AND SHALL BE THE ARCHITECT'S COPYRIGHT RESERVED. ALL PARTS OF THIS DRAWING ARE THE EXCLUSIVE PROPERTY OF THE ARCHITECT AND SHALL NOT BE USED WITHOUT THE EXPRESSED PERMISSION FROM THE ARCHITECT.



EXISTING

- SIB SURVEY MONUMENT PLANTED
- SSIB SURVEY MONUMENT FOUND
- IB STANDARD IRON BAR
- CC CUT CROSS
- CP CONCRETE PIN
- IB# ROUND IRON BAR
- SSIB* SHORT STANDARD IRON BAR
- IB* IRON BAR
- (WIT) WITNESS
- Meas. MEASURED
- (AOS) ANIS, O'SULLIVAN, VOLLEBEKK LTD.
- (P1) REGISTERED PLAN 4M-1388
- (P2) PLAN 4R-26208
- △ SIGN
- LS LIGHT STANDARD
- LP UTILITY POLE
- AN ANCHOR
- CSP NATURAL GAS LINE
- + 65.00 CORRUGATED STEEL PIPE
- C/L LOCATION OF ELEVATIONS
- PROPERTY LINE
- TOP OF SLOPE
- BOS BOTTOM OF SLOPE
- T/P TOP OF PIPE
- T/G TOP OF GRATE
- EOA EDGE OF ASPHALT
- JB JERSEY BARRIER
- OVERHEAD WIRES
- WORK LIMIT
- BH-1 BOREHOLE
- A WATERMAIN
- S SANITARY SEWER
- P STORM SEWER
- D DRAIN
- G GAS LINE (APPROX. LOC.)
- T UNDERGROUND TELEPHONE (APPROX. LOC.)
- CA UNDERGROUND CABLE (APPROX. LOC.)
- E UNDERGROUND ELECTRICITY (APPROX. LOC.)
- OVERHEAD WIRES
- LOT LINE
- RIGHT-OF-WAY LIMITS
- EASEMENT
- WORK LIMITS AREA
- TOP OF SLOPE
- DITCH CENTER
- BOTTOM OF SLOPE
- WOOD AREA
- GRADE CROSSING
- FLAGPOLE
- CATCHBASIN
- MANHOLE/CATCHBASIN
- MANHOLE
- FIRE HYDRANT
- VALVE
- REDUCER
- TEE
- VALVE CHAMBER
- PRIVATE UTILITIES (WATERMAIN)
- EXTERIOR WATER FAUCET
- SLUICeway
- NATURAL GAS VALVE
- SON
- STOP SIGN
- TRAFFIC LIGHT
- ELECTRICITY POLE
- TELEPHONE POLE
- ELECT.-TEL-STREET LIGHT POLE
- ELECT.-TEL-TRANSFORMER POLE
- PRIVATE STREET LIGHT
- ELECTRICITY MANHOLE
- SURVEY STATION
- ELEVATION
- DRAINAGE DIRECTION
- OVERLAND FLOW

LEGEND

- WM WATERMAIN
- SAN SANITARY SEWER
- STM STORM SEWER
- DRAIN
- GAS LINE (APPROX. LOC.)
- UNDERGROUND TELEPHONE (APPROX. LOC.)
- UNDERGROUND CABLE (APPROX. LOC.)
- OVERHEAD ELECTRICITY (APPROX. LOC.)
- LOT LINE
- RIGHT-OF-WAY LIMITS
- EASEMENT
- WORK LIMITS AREA
- TOP OF SLOPE
- DITCH CENTER
- BOTTOM OF SLOPE
- WOOD AREA
- GRADE CROSSING
- FLAGPOLE
- CATCHBASIN
- MANHOLE/CATCHBASIN
- MANHOLE
- FIRE HYDRANT
- VALVE
- REDUCER
- TEE
- VALVE CHAMBER
- PRIVATE UTILITIES (WATERMAIN)
- EXTERIOR WATER FAUCET
- SLUICeway
- NATURAL GAS VALVE
- SON
- STOP SIGN
- TRAFFIC LIGHT
- ELECTRICITY POLE
- TELEPHONE POLE
- ELECT.-TEL-STREET LIGHT POLE
- ELECT.-TEL-TRANSFORMER POLE
- PRIVATE STREET LIGHT
- ELECTRICITY MANHOLE
- SURVEY STATION
- ELEVATION
- DRAINAGE DIRECTION
- OVERLAND FLOW

PROPOSED

- WM WATERMAIN
- SAN SANITARY SEWER
- STM STORM SEWER
- DRAIN
- GAS LINE (APPROX. LOC.)
- UNDERGROUND TELEPHONE (APPROX. LOC.)
- UNDERGROUND CABLE (APPROX. LOC.)
- OVERHEAD ELECTRICITY (APPROX. LOC.)
- LOT LINE
- RIGHT-OF-WAY LIMITS
- EASEMENT
- WORK LIMITS AREA
- TOP OF SLOPE
- DITCH CENTER
- BOTTOM OF SLOPE
- WOOD AREA
- GRADE CROSSING
- FLAGPOLE
- CATCHBASIN
- MANHOLE/CATCHBASIN
- MANHOLE
- FIRE HYDRANT
- VALVE
- REDUCER
- TEE
- VALVE CHAMBER
- PRIVATE UTILITIES (WATERMAIN)
- EXTERIOR WATER FAUCET
- SLUICeway
- NATURAL GAS VALVE
- SON
- STOP SIGN
- TRAFFIC LIGHT
- ELECTRICITY POLE
- TELEPHONE POLE
- ELECT.-TEL-STREET LIGHT POLE
- ELECT.-TEL-TRANSFORMER POLE
- PRIVATE STREET LIGHT
- ELECTRICITY MANHOLE
- SURVEY STATION
- ELEVATION
- DRAINAGE DIRECTION
- OVERLAND FLOW

SEPTIC SYSTEM LEGEND

1. SEPTIC TANK, MIN. WORKING VOLUME OF 38,400 L
2. PUMPING CHAMBER, MIN. WORKING VOLUME OF 17,000 L
3. BASKET BIOFILTER TANK, 34000 L
4. WATERNOX-LS TANK, 18500 L
5. ALKALINITY TANK, 7,700 L
6. PUMPING CHAMBER, 4,800 L

- PRESSURIZED TANK LINES
- GRAVITY DRIVEN TANK LINES



NOTE OF CAUTION

THE GEODETIC COORDINATES OF EVERY ITEM INCLUDED AS PART OF THIS DOCUMENT HAVE NO LEGAL VALUE. THE SITE LAYOUT MUST BE COMPLETED USING THE OFFICIAL BENCHMARKS OF AN ACCREDITED LAND SURVEYOR.

THE UNDERGROUND FEATURES AND INFORMATION THAT APPEAR ON THE DRAWINGS WERE OBTAINED FROM THE PUBLIC UTILITY COMPANIES AND/OR FROM THE CITY EACH RESPECTIVELY.

ALL INFORMATION UNDER THE LEGEND 'EXISTING' IS FOR INFORMATION ONLY. COMPLETE OR EXACT LOCATION AND ELEVATION OF UNDERGROUND SERVICES ARE NOT GUARANTEED.

CERTAIN UNDERGROUND FEATURES ON PRIVATE PROPERTY ARE NOT SHOWN ON THE CURRENT DRAWING.

ANYONE WHO PROCEEDS WITH EXCAVATION WORK SHALL VERIFY THE EXACT LOCATION OF ALL UNDERGROUND FEATURES, BY EXPLORATORY EXCAVATIONS, AND SHALL ASSUME FULL RESPONSIBILITY IF THERE IS ANY DAMAGE THAT OCCURS DURING WORK.

THE CONTRACTOR WILL HAVE THE RESPONSIBILITY AND THE OBLIGATION TO VALIDATE, BY EXPLORATORY EXCAVATION, THE SIZE OF THE PUBLIC UTILITIES UNDERGROUND SERVICES AND TO WARN THE ENGINEER OF ANY CONFLICT WITH THE PROJECTED WORK.