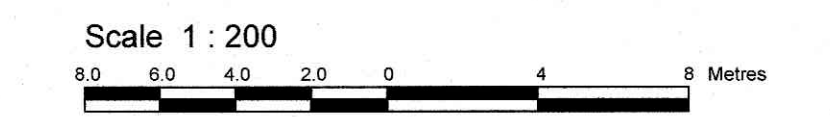


TOPOGRAPHICAL PLAN OF SURVEY OF  
**LOT 41,**  
**PART OF LOTS 42, 56 and 57**  
**REGISTERED PLAN 311**  
**CITY OF OTTAWA**  
 Surveyed by Annis, O'Sullivan, Vollebek Ltd.



Metric  
 DISTANCES SHOWN ON THIS PLAN ARE IN METRES AND  
 CAN BE CONVERTED TO FEET BY DIVIDING BY 0.3048

**Surveyor's Certificate**  
 I CERTIFY THAT:  
 1. This survey and plan are correct and in accordance with the Survey Act and the Regulations made under them.  
 2. The survey was completed on the 20th day of October, 2021.  
 Date: Oct 22/21  
 T. Hartwick  
 Ontario Land Surveyor

**Notes & Legend**

Denotes	
—	Survey Monument Planted
—	Survey Monument Found
SIB	Standard Iron Bar
SSIB	Short Standard Iron Bar
IB	Iron Bar
CC	Cut Cross
IBP	Iron Bar
SSIB*	0.3m Short Standard Iron Bar
(WIT)	Witness
Meas.	Measured
(AOG)	Annis, O'Sullivan, Vollebek Ltd.
(P1)	Registered Plan 311
(P2)	(857) Plan September 20, 2002
(P3)	(AOG) Plan September 17, 1986
(P4)	Plan SR-10159
(P5)	Plan 4R-515
(P6)	(1473) Plan July 14, 2003
(P7)	Plan SR-6510
(P8)	(JOB) Plan June 9, 1978
(P9)	(857) Plan September 20, 2002
(P10)	(AOG) Plan April 12, 2019
(NI)	(AOG) Field Notes September 15, 1986
(DI)	Instrument No. N574853
○ M-HST	Maintenance Hole (Storm Sewer)
○ M-HS	Maintenance Hole (Sanitary)
○ M-HB	Maintenance Hole (Bell)
MHT	Maintenance Hole (Traffic)
— OHW	Overhead Wires
□ CB	Catch Basin
□ G	Gas Meter
— G	Underground Gas as marked on Ground by others
— B	Underground Bell as marked on Ground by others
— P	Underground Hydro as marked on Ground by others
—	Board Fence
LP	Utility Pole
• AN	Anchor
○ LS	Light Standard
○	Diameter
+6.00	Location of Elevations
+6.07	Top of Curb / Planter Elevation
—	Property Line
—	Top of Grate
T/G	Top of Retaining Wall
WRW	Wooden Retaining Wall
○	Deciduous Tree
○	Coniferous Tree
○ M-W	Monitoring Well
DC	Depressed Curb
○ VC	Valve Chamber (Watermain)

**ELEVATION NOTES**  
 1. Elevations shown are geodetic and are referred to the CGVD28 geodetic datum.  
 2. It is the responsibility of the user of this information to verify that the job benchmark has not been altered or disturbed and that its relative elevation and description agrees with the information shown on this drawing.

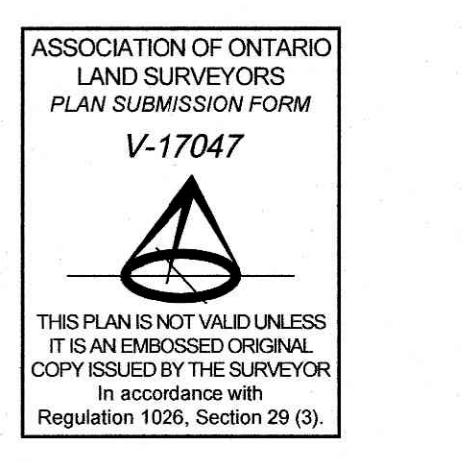
**UTILITY NOTES**  
 1. This drawing cannot be accepted as acknowledging all of the utilities and it will be the responsibility of the user to contact the respective utility authorities for confirmation.  
 2. Only visible surface utilities were located.  
 3. A field location of underground plant by the pertinent utility authority is mandatory before any work involving breaking ground, probing, excavating, etc.

Topographic data was collected under Winter Conditions.  
 Snow cover and ice preclude determining location and elevation of some topographical data that is otherwise visible.

Bearings are grid. Derived from Can-Net 2016 Real Time Network GPS observations and are referred to the Central Meridian of MTM Zone 9 (76°30' West Longitude) NAD-83 (original).

For comparison purposes, bearings shown on Plans P2, P3, P5 and P6 are astronomic bearings.

SITE AREA = 5433.2 m<sup>2</sup>



THIS PLAN IS NOT VALID UNLESS IT IS AN UNREPRODUCED ORIGINAL COPY ISSUED BY THE SURVEYOR in accordance with Regulation 1026, Section 29 (3).