

PAVEMENT DESIGN

40mm SUPERPAVE 12.5 ASPHALTIC CONCRETE
 50mm SUPERPAVE 19.0 ASPHALTIC CONCRETE
 150mm OPSS GRANULAR A CRUSHED STONE
 40mm OPSS GRANULAR B TYPE II

NOTE:
 ALL EXISTING BUILDINGS, BARNs,
 POST & WIRE FENCES, TREES,
 UTILITY WIRES, POLES AND
 CULVERTS WITHIN LOTS AND BLOCKS
 TO BE REMOVED, UNLESS
 OTHERWISE NOTED.

ANY DISTURBED AREA DURING
 CONSTRUCTION TO BE RESTORED TO
 THE ORIGINAL CONDITION OR BETTER
 TO THE SATISFACTION OF THE
 AUTHORITIES HAVING JURISDICTION

WRITTEN PERMISSION REQUIRED
 FOR WORK ON ADJACENT LANDS

NOTE
 FOR WATERMAIN STUBS, 2.4m
 MIN. COVER TO BE PROVIDED

NOTE:
 ALL WATERMAIN CONNECTIONS AND
 DECOMMISSIONING OF EXISTING WATERMANS
 TO BE COMPLETED BY CITY FORCES. TRENCH
 BACKFILL/REINSTATEMENT TO BE COMPLETED BY
 THE CONTRACTOR TO THE SATISFACTION OF THE
 CITY OF OTTAWA.

**NOTE: RE: TEST PIT/BOREHOLE
 EXCAVATIONS**
 ANY DISTURBED MATERIAL ENCOUNTERED
 BELOW THE SUBGRADE LEVEL WITHIN A
 BUILDING FOOTPRINT TO BE SUB-EXCAVATED
 AND BACKFILLED WITH COMPACTED ENGINEERED
 FILL AS PER GEOTECHNICAL ENGINEERS
 RECOMMENDATION.

CONTRACTOR TO VERIFY THE
 PRECISE LOCATIONS AND INVERT
 ELEVATIONS OF EX. UNDERGROUND
 SERVICES AND EX. UTILITIES PRIOR
 TO STARTING CONSTRUCTION

NOTE: CB
 FOR CATCHBASIN INFORMATION, REFER TO
 DRAWING No. 3 FOR DETAIL.

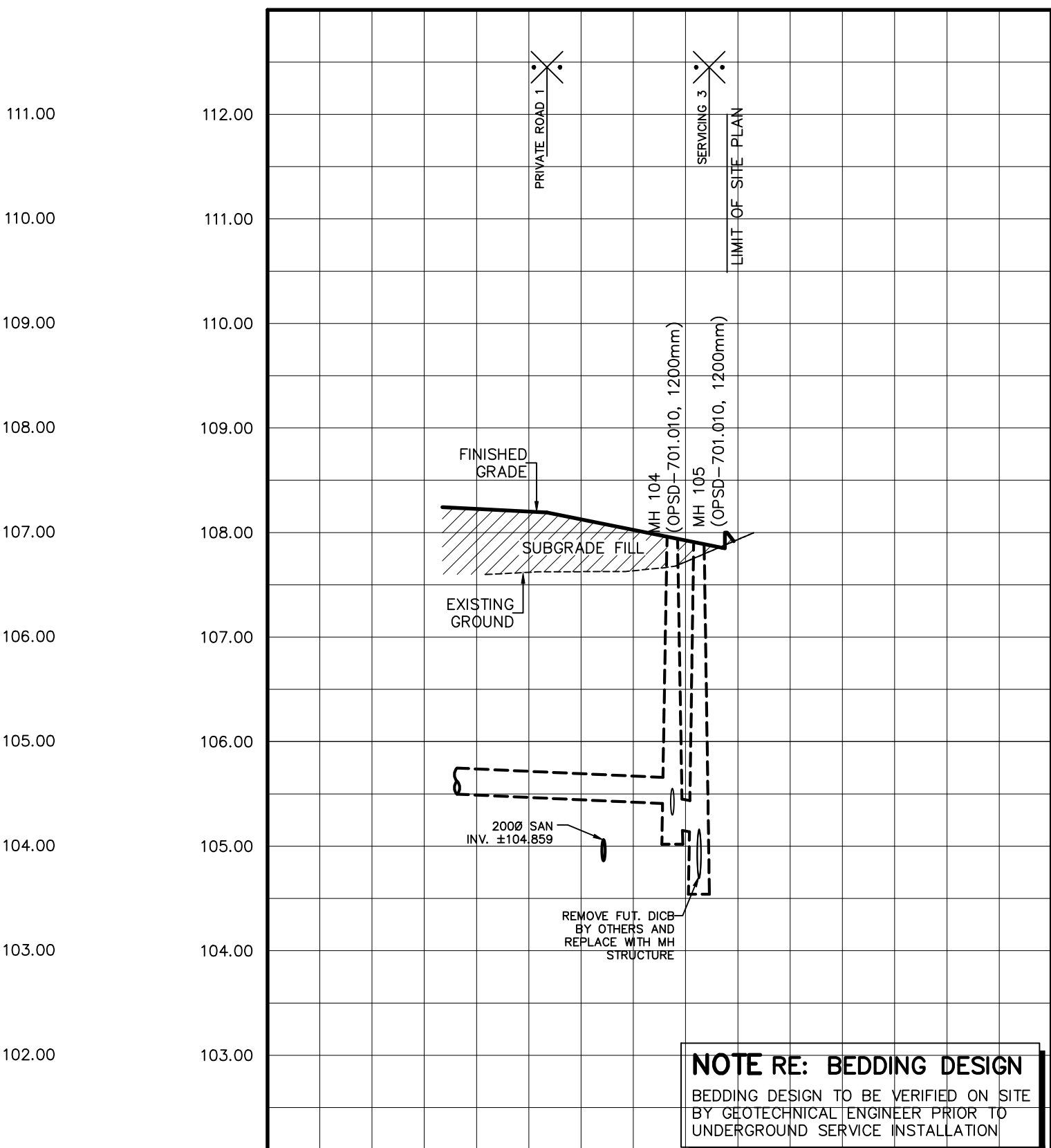
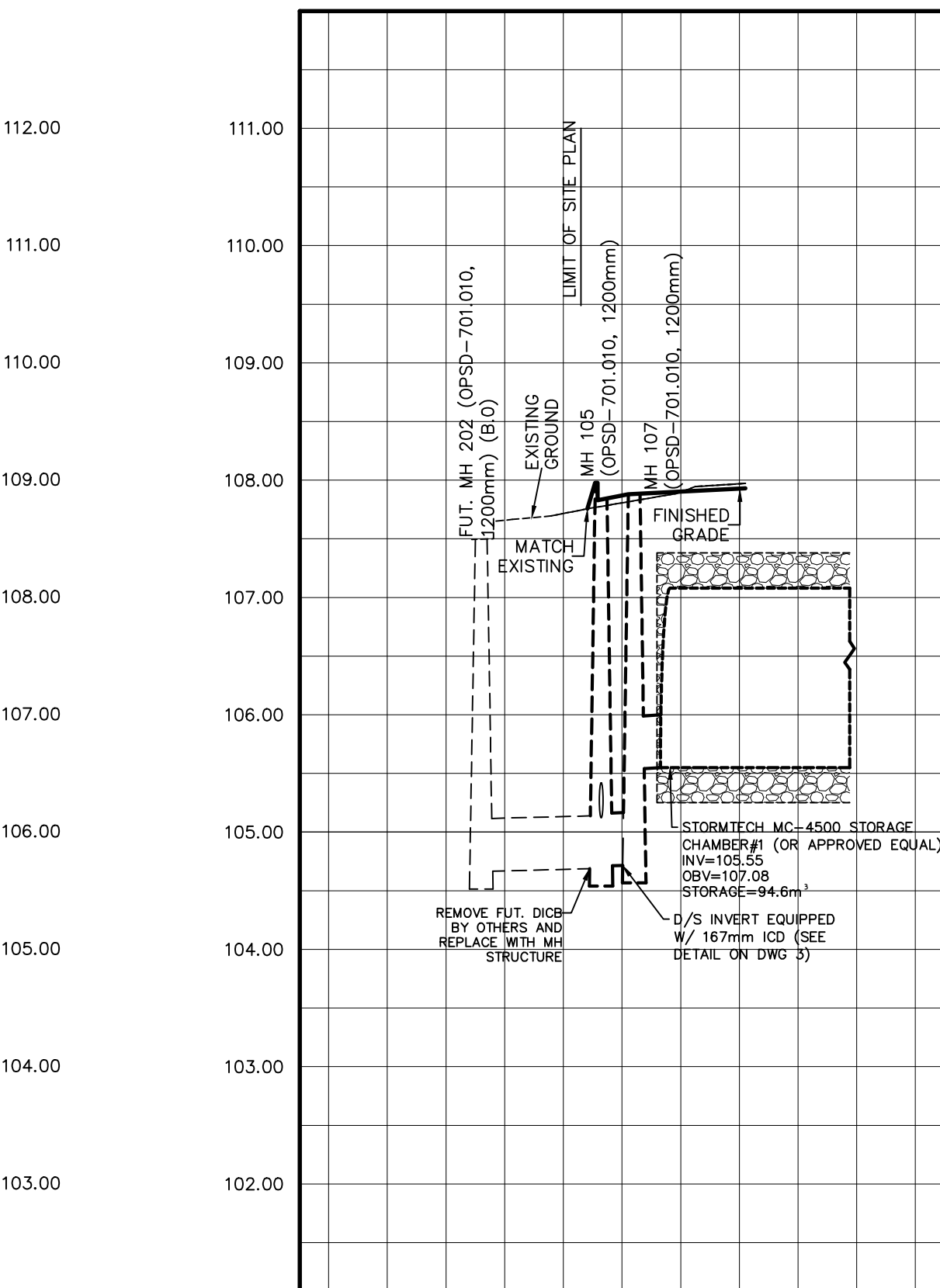
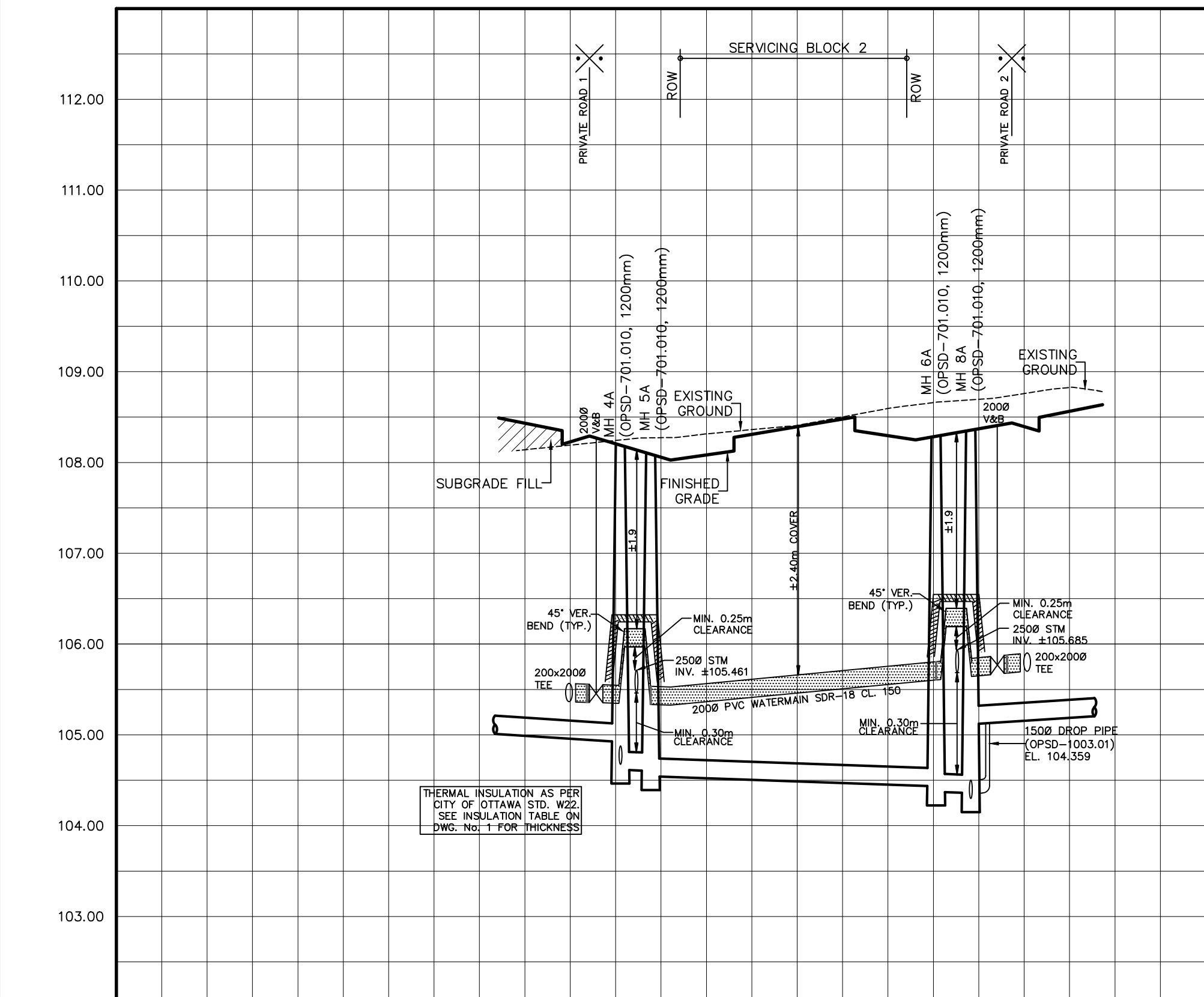
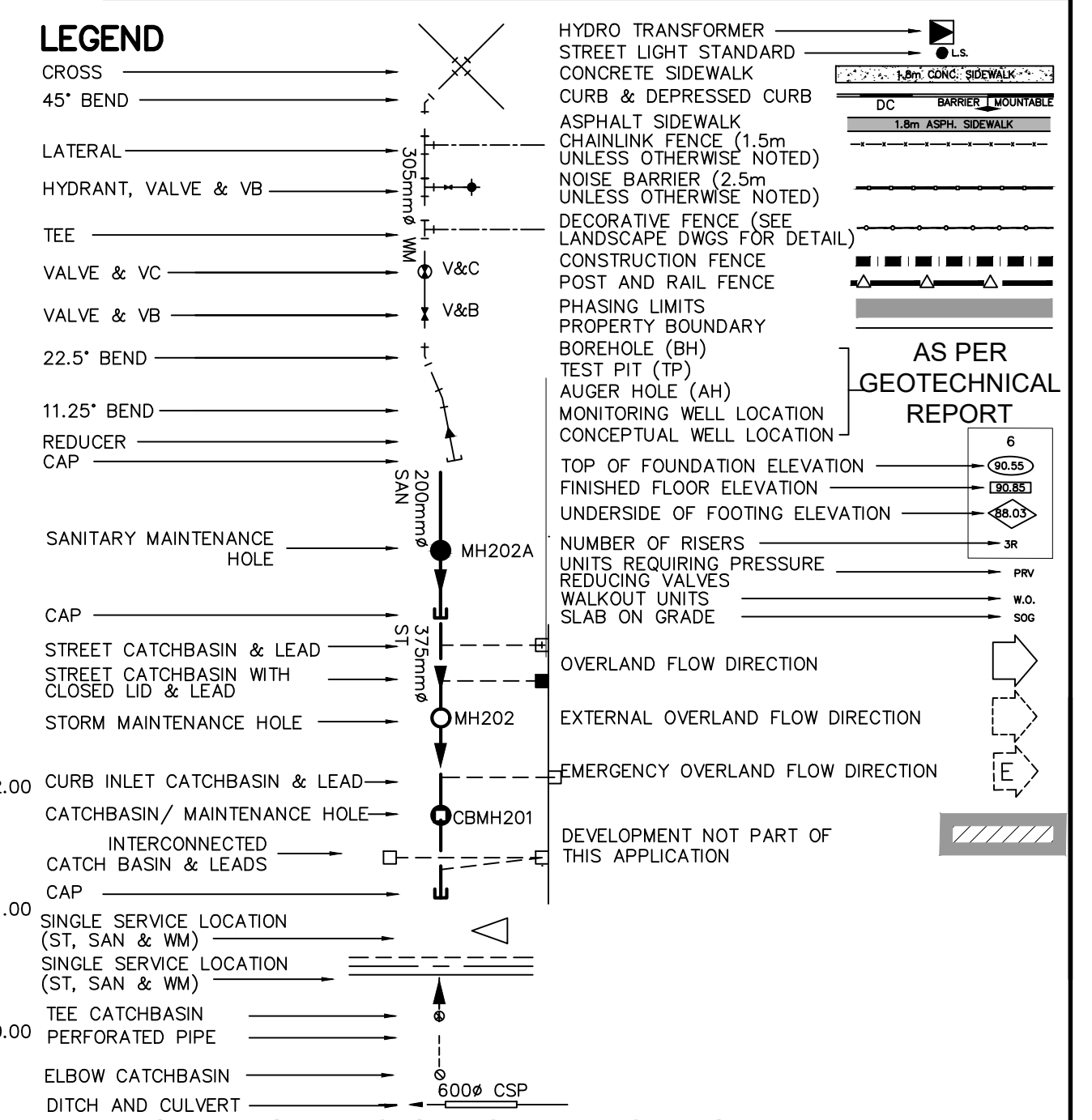
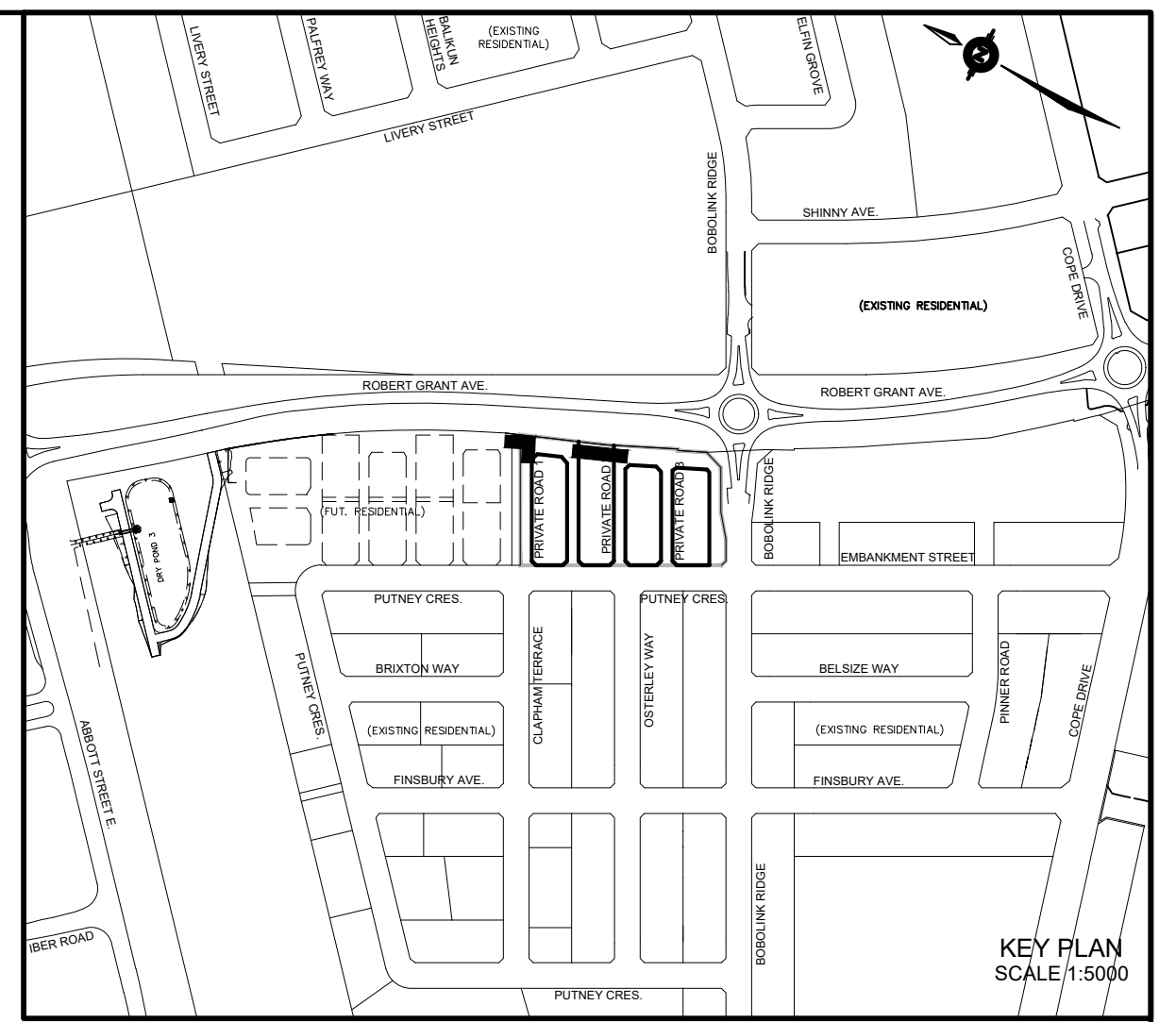
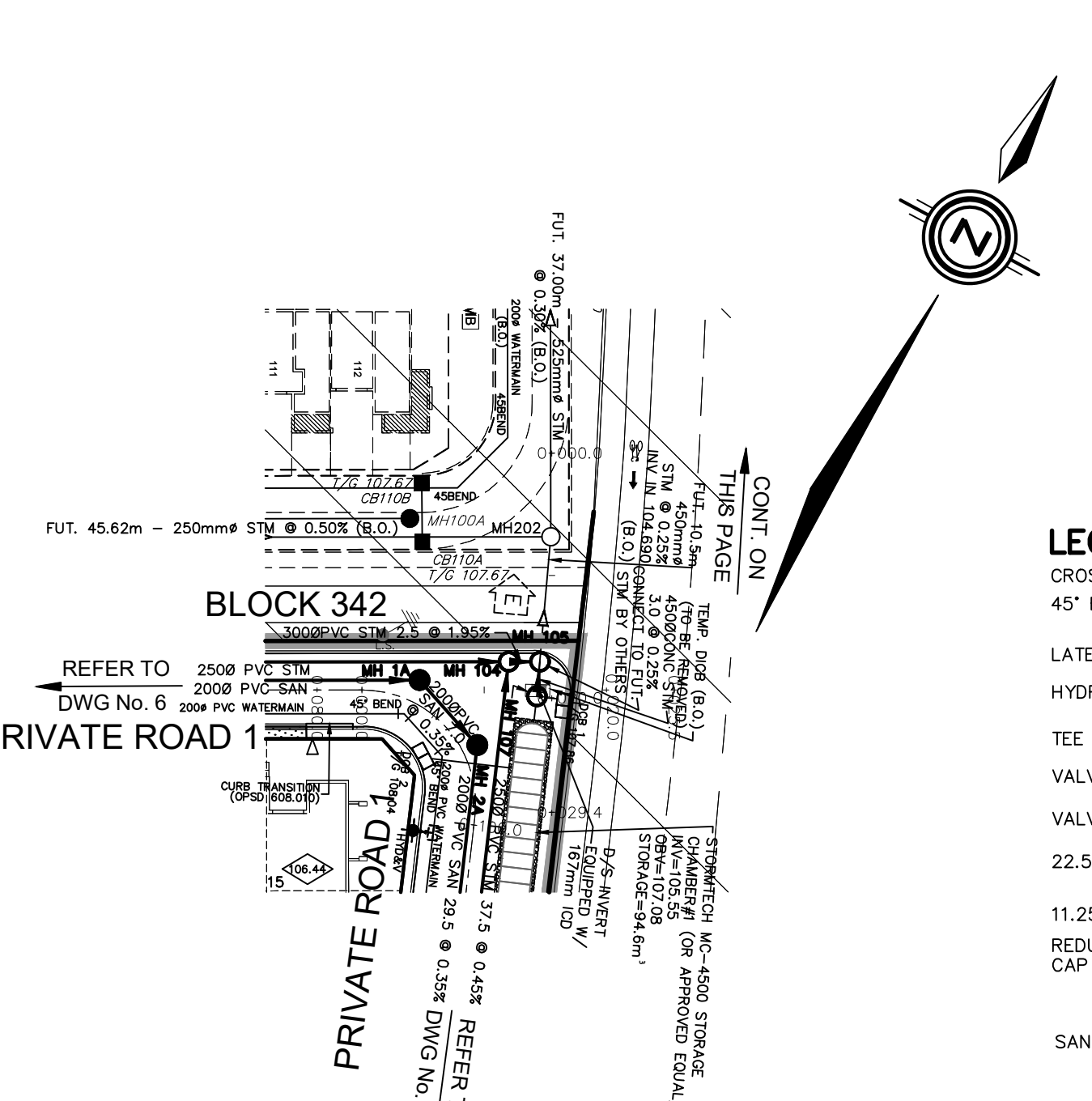
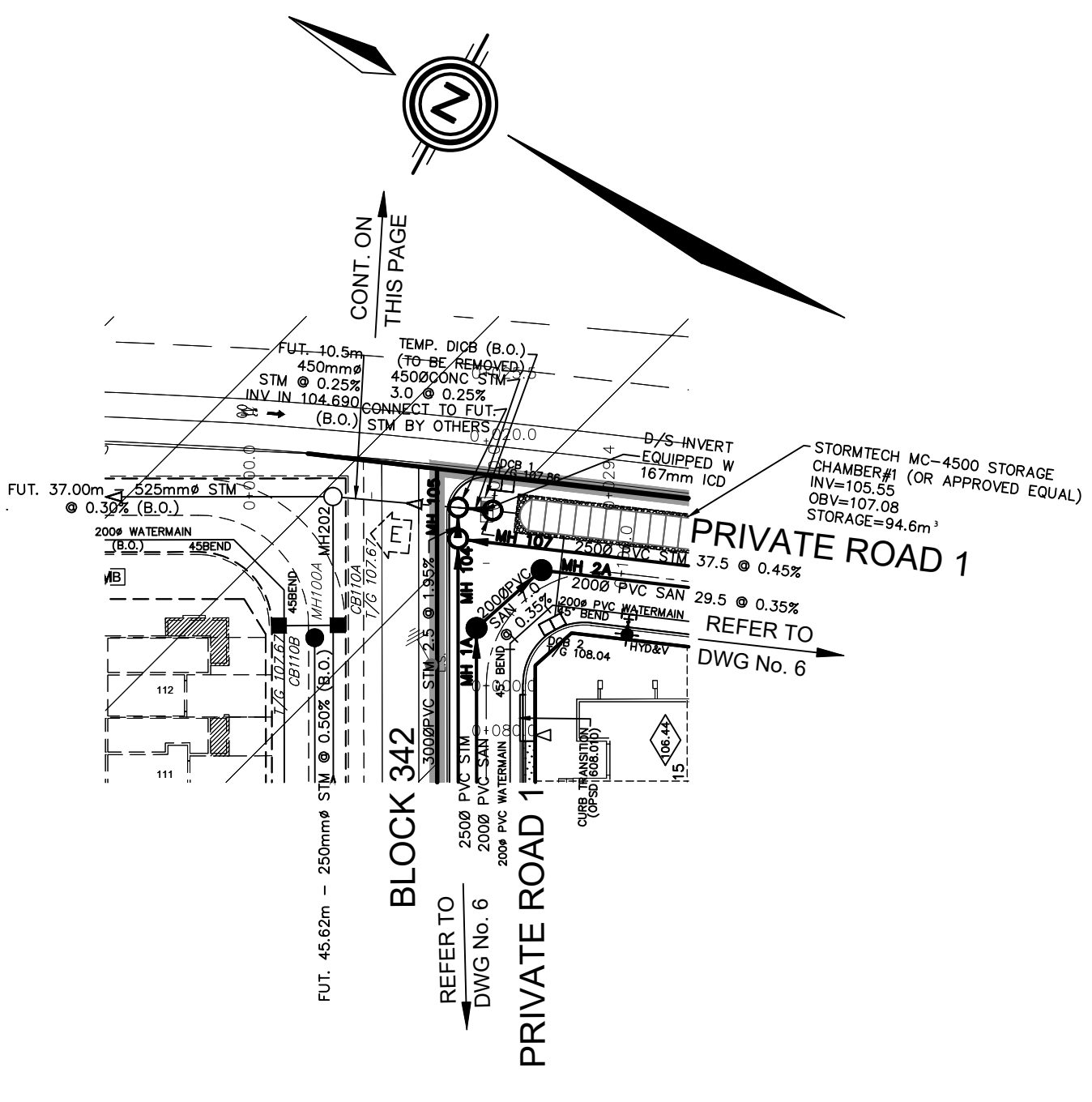
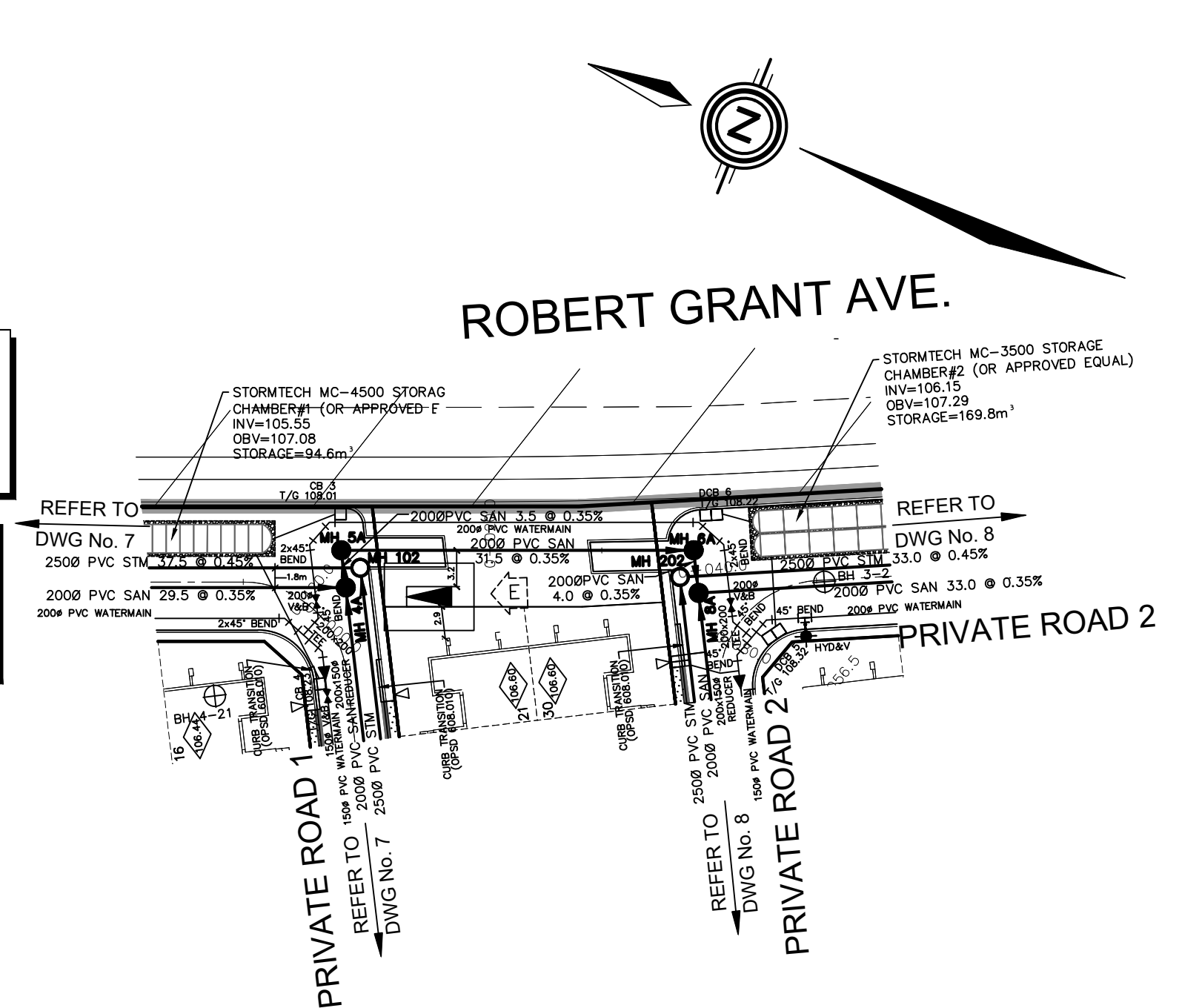
GRADING AND SERVICING FOR
 ADJACENT CONDO BLOCK WEST OF
 PROPERTY PER IBI GRADING AND
 SERVICING PLANS, RECEIVED AUGUST
 8, 2021.

GRADING FOR SUBDIVISION PER IBI
 PROJECT No. 27970 - REV 16,
 DATED JUNE 27, 2019.

SERVICING FOR SUBDIVISION PER IBI
 PROJECT No. 27970 - REV 18,
 DATED JANUARY 11, 2019.

COMPOSITE UTILITY PLAN OF
 SUBDIVISION PER IBI PROJECT No.
 27970 - REV 7, DATED NOVEMBER
 29, 2018.

NOTE
 UNDERGROUND STORAGE TANK VOLUMES
 EXCLUDE VOLUME IN THE BASE STONE BELOW
 THE INVERT OF THE STORAGE TANK



TOP OF WATERMAIN	2000 PVC SAN 77.0 @ 0.65% SDR-35 SW 104.927 N 104.675 NE 104.615 SE 104.543 S 104.543 108.297	2000 PVC SAN 31.5 @ 0.35% SDR-35 SW 104.433 N 104.373 NE 104.358 SE 104.299 S 104.299 108.277	2000 PVC SAN 4.0 @ 0.35% SDR-35 SW 104.603 N 104.543 NE 104.543 SE 104.543 S 104.543 108.345	2000 PVC SAN 73.0 @ 0.65% SDR-35 SW 104.927 N 104.675 NE 104.615 SE 104.543 S 104.543 108.297	2000 PVC SAN 31.5 @ 0.35% SDR-35 SW 104.433 N 104.373 NE 104.358 SE 104.299 S 104.299 108.277	2000 PVC SAN 4.0 @ 0.35% SDR-35 SW 104.603 N 104.543 NE 104.543 SE 104.543 S 104.543 108.345	PROPOSED GRADES	108.291 108.190 108.092 108.027 108.277 108.345 108.500 108.250 108.330 108.330 108.356 108.436
------------------	---	---	--	---	---	--	-----------------	--

TOP OF WATERMAIN	2000 PVC SAN 77.0 @ 0.65% SDR-35 SW 104.927 N 104.675 NE 104.615 SE 104.543 S 104.543 108.297	2000 PVC SAN 31.5 @ 0.35% SDR-35 SW 104.433 N 104.373 NE 104.358 SE 104.299 S 104.299 108.277	2000 PVC SAN 4.0 @ 0.35% SDR-35 SW 104.603 N 104.543 NE 104.543 SE 104.543 S 104.543 108.345	2000 PVC SAN 73.0 @ 0.65% SDR-35 SW 104.927 N 104.675 NE 104.615 SE 104.543 S 104.543 108.297	2000 PVC SAN 31.5 @ 0.35% SDR-35 SW 104.433 N 104.373 NE 104.358 SE 104.299 S 104.299 108.277	2000 PVC SAN 4.0 @ 0.35% SDR-35 SW 104.603 N 104.543 NE 104.543 SE 104.543 S 104.543 108.345	PROPOSED GRADES	107.510 107.510 107.510 107.510 107.510 107.510 107.510
------------------	---	---	--	---	---	--	-----------------	---

TOP OF WATERMAIN	2000 PVC SAN 77.0 @ 0.65% SDR-35 SW 104.927 N 104.675 NE 104.615 SE 104.543 S 104.543 108.297	2000 PVC SAN 31.5 @ 0.35% SDR-35 SW 104.433 N 104.373 NE 104.358 SE 104.299 S 104.299 108.277	2000 PVC SAN 4.0 @ 0.35% SDR-35 SW 104.603 N 104.543 NE 104.543 SE 104.543 S 104.543 108.345	2000 PVC SAN 73.0 @ 0.65% SDR-35 SW 104.927 N 104.675 NE 104.615 SE 104.543 S 104.543 108.297	2000 PVC SAN 31.5 @ 0.35% SDR-35 SW 104.433 N 104.373 NE 104.358 SE 104.299 S 104.299 108.277	2000 PVC SAN 4.0 @ 0.35% SDR-35 SW 104.603 N 104.543 NE 104.543 SE 104.543 S 104.543 108.345	PROPOSED GRADES	107.940 107.940 107.940 107.940 107.940 107.940 107.940
------------------	---	---	--	---	---	--	-----------------	---

NOT FOR CONSTRUCTION

1	S.L.M.	22-01-13	1st SUBMISSION
---	--------	----------	----------------

TOPOGRAPHIC INFORMATION
 TOPOGRAPHIC INFORMATION PROVIDED BY ANNIS, O'SULLIVAN, VOLLEBEKK LTD. PROJECT No. 22111-21 RECEIVED JUNE 24, 2021

LEGAL INFORMATION
 CALCULATED M-PLAN PROVIDED BY ANNIS, O'SULLIVAN, VOLLEBEKK LTD., PROJECT No. 22111-21, RECEIVED DECEMBER 13, 2021.

BENCH MARK
 SITE BENCHMARK #1, FIRE HYDRANT TOP OF SPINDLE
 ELEVATION = 109.78m
 SITE BENCHMARK #2, CP IN ASPHALT
 ELEVATION = 109.09

TAMARACK HOMES **BOBOLINK RIDGE BLOCK 343**

DSEL
 120 Ibor Road Unit 103
 Sillsville, Ontario, K2S 1E9
 Tel. (613) 836-0856
 Fax. (613) 836-7183
 www.DSEL.ca

S.L. MERRICK
 LICENSED PROFESSIONAL ENGINEER
 100186523
 22-01-13
 PROVINCE OF ONTARIO

Ottawa
 110 Laurier Ave W
 Ottawa, Ontario, K1P 1J1
 Tel. (613) 580-2400
 www.Ottawa.ca

PLAN AND PROFILE OF
SERVICING BLOCK
 (STA. 0+000.000 TO 0+060.000) & (STA. 0+000.000 TO 0+020.000) & (STA. 0+000.000 TO 0+020.000)

DRAWN BY: G.G.G. CHECKED BY: S.L.M. PROJECT No. **21-1261**
 DESIGNED BY: G.G.G. CHECKED BY: S.L.M.
 SCALE: HORZ. 1:50 VERT. 1:500

SHEET No. **11**

CITY PLAN No. XXXXX
 CITY FILE No. D07-XX-XX-XXXX