

PAVEMENT DESIGN

40mm SUPERPAVE 12.5 ASPHALTIC CONCRETE
 50mm SUPERPAVE 19.0 ASPHALTIC CONCRETE
 150mm OPSS GRANULAR A CRUSHED STONE
 400mm OPSS GRANULAR B TYPE II

NOTE:
 ALL EXISTING BUILDINGS, BARNs,
 POST & WIRE FENCES, TREES,
 UTILITY WIRES, POLES AND
 CULVERTS WITHIN LOTS AND BLOCKS
 TO BE REMOVED, UNLESS
 OTHERWISE NOTED.

NOTE
 FOR WATERMAIN LAYOUT AT DEAD-END
 STREETS REFER TO CITY STD. W37.2

NOTE
 UNDERGROUND STORAGE TANK VOLUMES
 EXCLUDE VOLUME IN THE BASE STONE BELOW
 THE INVERT OF THE STORAGE TANK

ANY DISTURBED AREA DURING
 CONSTRUCTION TO BE RESTORED TO
 ORIGINAL CONDITION OR BETTER
 TO THE SATISFACTION OF THE
 AUTHORITIES HAVING JURISDICTION

WRITTEN PERMISSION REQUIRED
 FOR WORK ON ADJACENT LANDS

NOTE
 FOR WATERMAIN STUBS, 2.4m
 MIN. COVER TO BE PROVIDED

NOTE:
 ALL WATERMAIN CONNECTIONS AND
 DECOMMISSIONING OF EXISTING WATERMANS
 TO BE COMPLETED BY CITY FORCES. TRENCH
 BACKFILL/REINSTATEMENT TO BE COMPLETED BY
 THE CONTRACTOR TO THE SATISFACTION OF THE
 CITY OF OTTAWA.

**NOTE: RE: TEST PIT/BOREHOLE
 EXCAVATIONS**
 ANY DISTURBED MATERIAL ENCOUNTERED
 BELOW THE SUBGRADE LEVEL WITHIN A
 BUILDING FOOTPRINT TO BE SUB-EXCAVATED
 AND BACKFILLED WITH COMPACTED ENGINEERED
 FILL AS PER GEOTECHNICAL ENGINEERS
 RECOMMENDATION.

CONTRACTOR TO VERIFY THE
 PRECISE LOCATIONS AND INVERT
 ELEVATIONS OF Ex. UNDERGROUND
 SERVICES AND Ex. UTILITIES PRIOR
 TO STARTING CONSTRUCTION

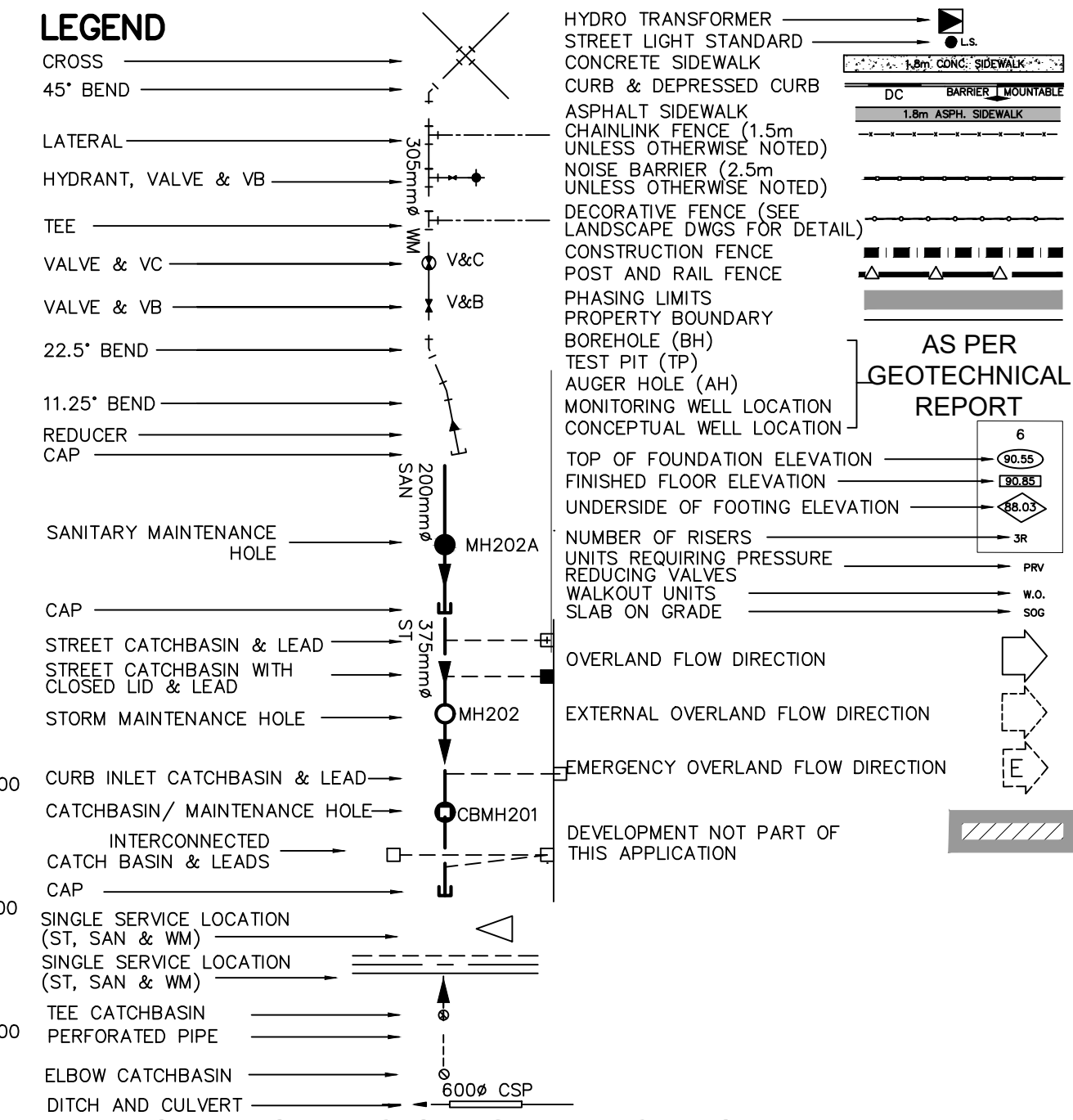
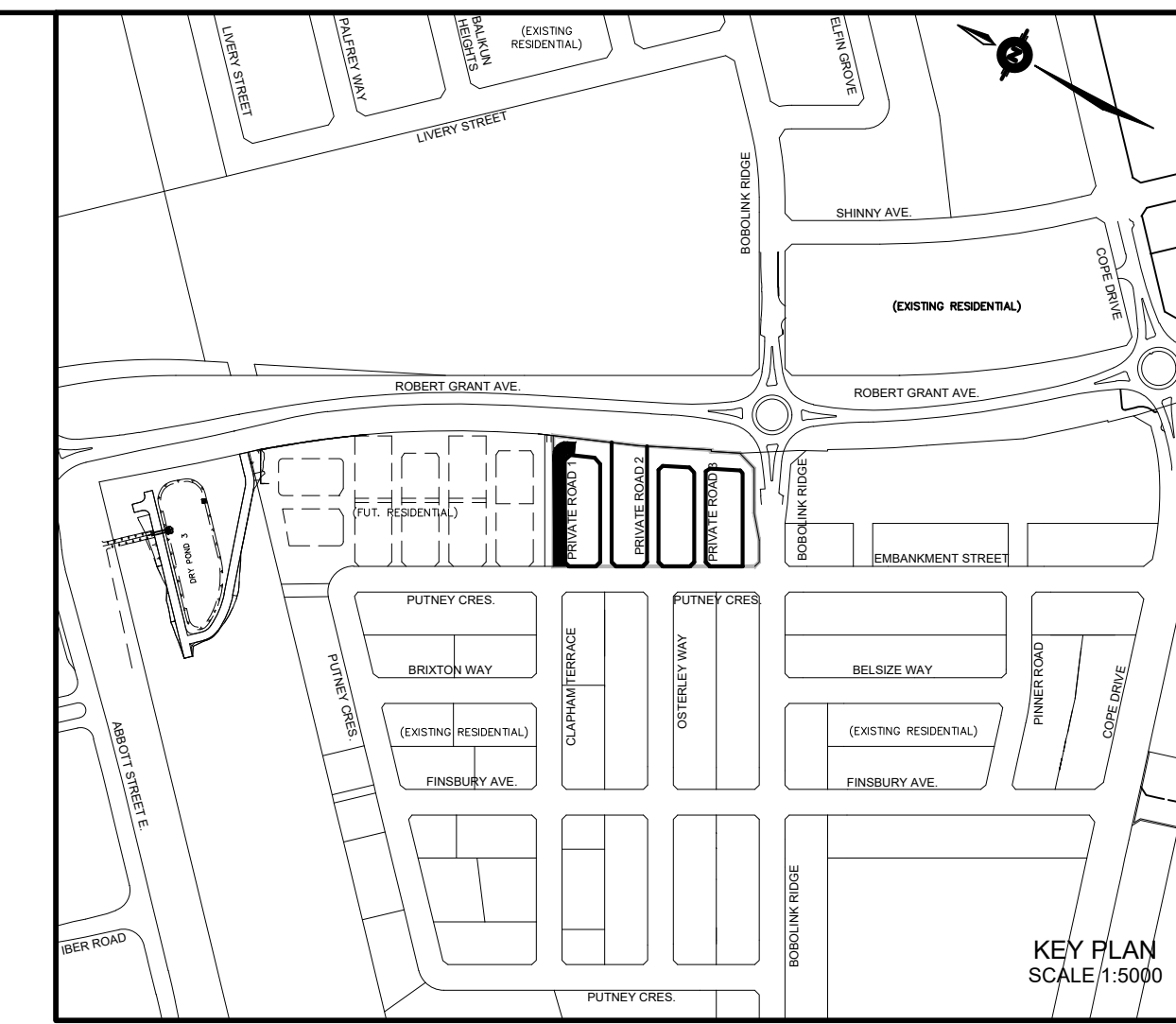
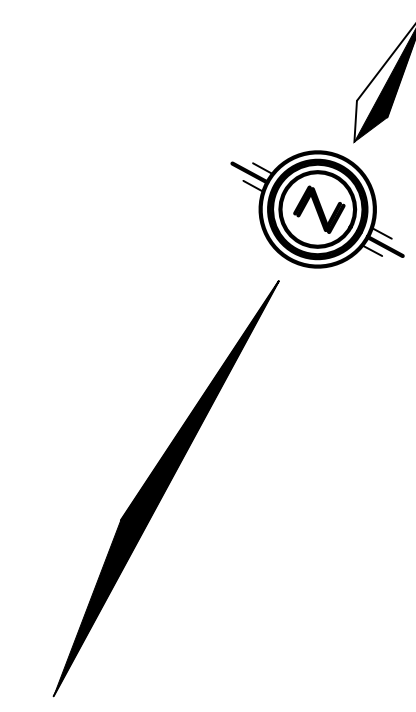
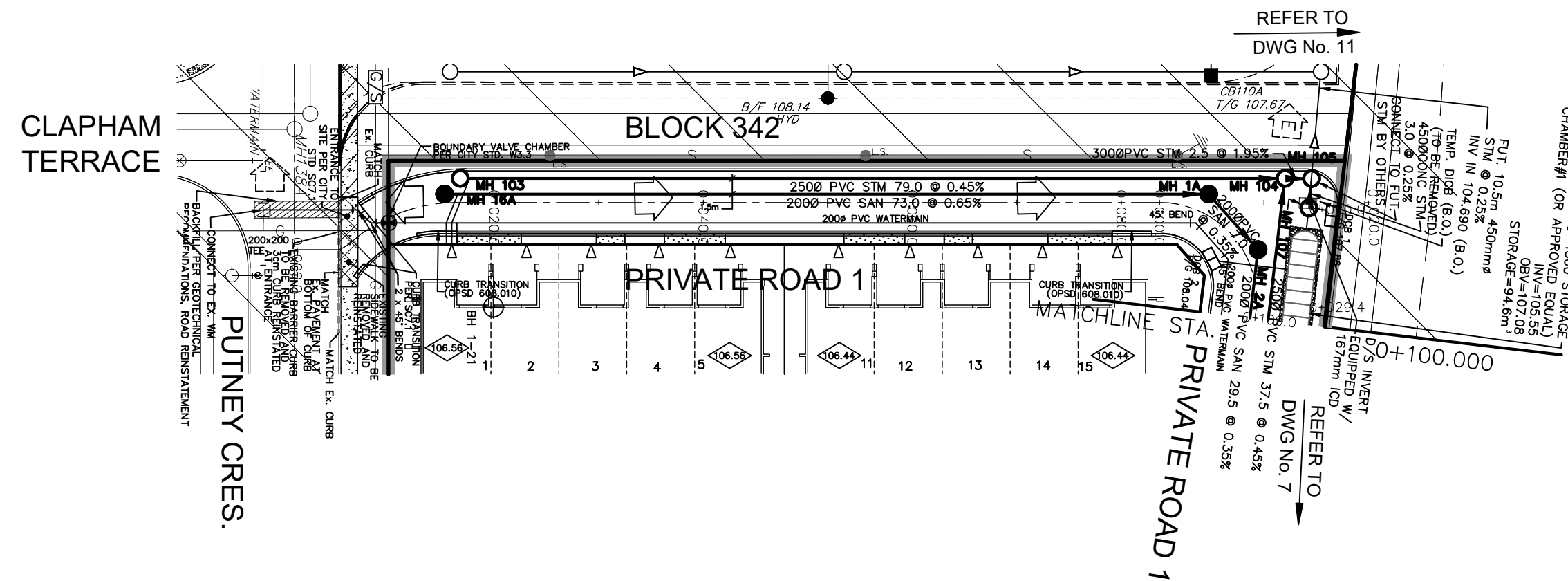
NOTE: CB
 FOR CATCHBASIN INFORMATION, REFER TO
 DRAWING No. 3 FOR DETAIL.

GRADING AND SERVICING FOR
 ADJACENT CONDO BLOCK WEST OF
 PROPERTY PER IBI GRADING AND
 SERVICING PLANS, RECEIVED AUGUST
 8, 2021.

GRADING FOR SUBDIVISION PER IBI
 PROJECT No. 27970 - REV 16,
 DATED JUNE 27, 2019.

SERVICING FOR SUBDIVISION PER IBI
 PROJECT No. 27970 - REV 16,
 DATED JANUARY 11, 2019.

COMPOSITE UTILITY PLAN OF
 SUBDIVISION PER IBI PROJECT No.
 27970 - REV 7, DATED NOVEMBER
 29, 2018.



NOT FOR CONSTRUCTION

No.	BY	DATE	DESCRIPTION
1	S.L.M.	22-01-13	1st SUBMISSION

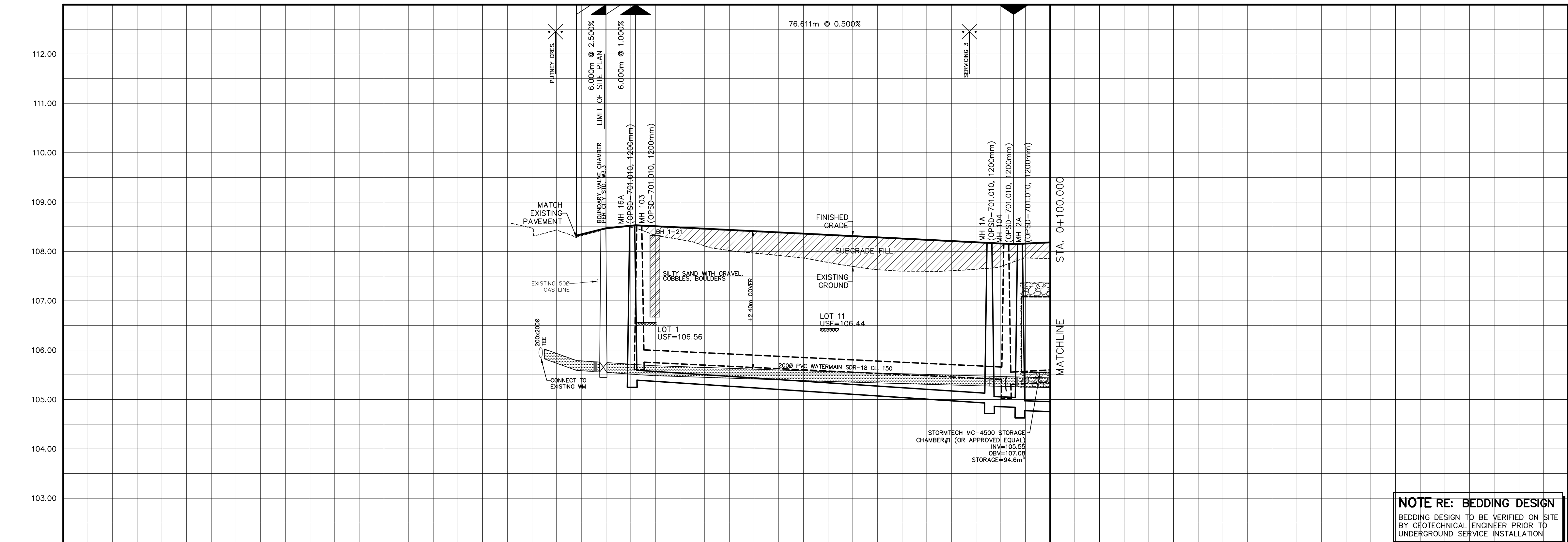
TOPOGRAPHIC INFORMATION
 TOPOGRAPHIC INFORMATION PROVIDED BY ANNIS, O'SULLIVAN, VOLLEBEKK LTD. PROJECT No. 22111-21 RECEIVED JUNE 24, 2021

LEGAL INFORMATION
 CALCULATED M-PLAN PROVIDED BY ANNIS, O'SULLIVAN, VOLLEBEKK LTD., PROJECT No. 22111-21. RECEIVED DECEMBER 13, 2021.

BENCH MARK
 SITE BENCHMARK #1, FIRE HYDRANT TOP OF SPINDLE
 ELEVATION = 109.78m
 SITE BENCHMARK #2, CP IN ASPHALT
 ELEVATION = 109.09

TAMARACK HOMES BOBOLINK RIDGE BLOCK 343

120 Iber Road Unit 103
 Slittsville, Ontario, K2S 1E9
 Tel. (613) 836-0856
 Fax. (613) 836-7183
 www.DSEL.ca



NOTE RE: BEDDING DESIGN
 BEDDING DESIGN TO BE VERIFIED ON SITE
 BY GEOTECHNICAL ENGINEER PRIOR TO
 UNDERGROUND SERVICE INSTALLATION

TOP OF WATERMAIN	SANITARY INVERT	STORM INVERT	PROPOSED GRADES	CENTERLINE CHAINAGE
108.2500 108.933 108.790 108.357 108.470 108.523 108.528 108.510 108.410 108.310 108.210 108.192 108.172 108.155 108.147 108.131 108.118	2000 PVC SAN 73.0 @ 0.65% SDR-35 2000 PVC SAN 7.0 @ 0.35% SDR-35	2500 PVC STM 79.0 @ 0.45% SDR-35	0+000.000- BC 0+003.999- CC 0+005.493- 0+009.999- 0+015.999- EC 0+016.391- 0+020.000- 0+040.000- 0+060.000- 0+080.000- BC 0+083.641- BC 0+083.648- 0+092.610- EC 0+099.443-	0+000.000 0+003.999 0+005.493 0+009.999 0+015.999 0+016.391 0+020.000 0+040.000 0+060.000 0+080.000 0+083.641 0+083.648 0+092.610 0+099.443

PLAN AND PROFILE OF
PRIVATE ROAD 1
 (STA. 0+000.000 TO 0+100.000)

© DSEL

DRAWN BY: G.G.G. CHECKED BY: S.L.M. PROJECT No. **21-1261**
 DESIGNED BY: G.G.G. CHECKED BY: S.L.M.
 SCALE: HORZ. 1:50 VERT. 1:500 SHEET No. **6**

110 Laurier Ave W
 Ottawa, Ontario, K1P 1J1
 Tel. (613) 580-2400
 www.Ottawa.ca

CITY PLAN No. XXXXX
 CITY FILE No. D07-XX-XX-XXXX