

NOTE:
A GEOTECHNICAL ENGINEER LICENSED IN THE PROVINCE OF ONTARIO IS TO INSPECT ALL SUBGRADE SURFACES FOR FOOTING AND PAVEMENT STRUCTURES PRIOR TO CONSTRUCTION

NOTE:
ALL EXISTING POST & WIRE FENCE, CULVERTS, UTILITY WIRE / POLES, TREES, SHRUBS ETC. WITHIN LOTS, BLOCKS AND ROADS TO BE REMOVED, UNLESS OTHERWISE NOTED

NOTE:
ALL SWALES SHALL BE 0.15m DEEP WITH 3:1 SIDE SLOPES UNLESS OTHERWISE INDICATED

NOTE:
FOR CROSS SECTIONS REFER TO DRAWING No. 13.

ANY DISTURBED AREA DURING CONSTRUCTION TO BE RESTORED TO THE ORIGINAL CONDITION OR BETTER TO THE SATISFACTION OF THE AUTHORITIES HAVING JURISDICTION

CONTRACTOR TO VERIFY THE PRECISE LOCATIONS AND INVERT ELEVATIONS OF EX. UNDERGROUND SERVICES AND EX. UTILITIES PRIOR TO STARTING CONSTRUCTION

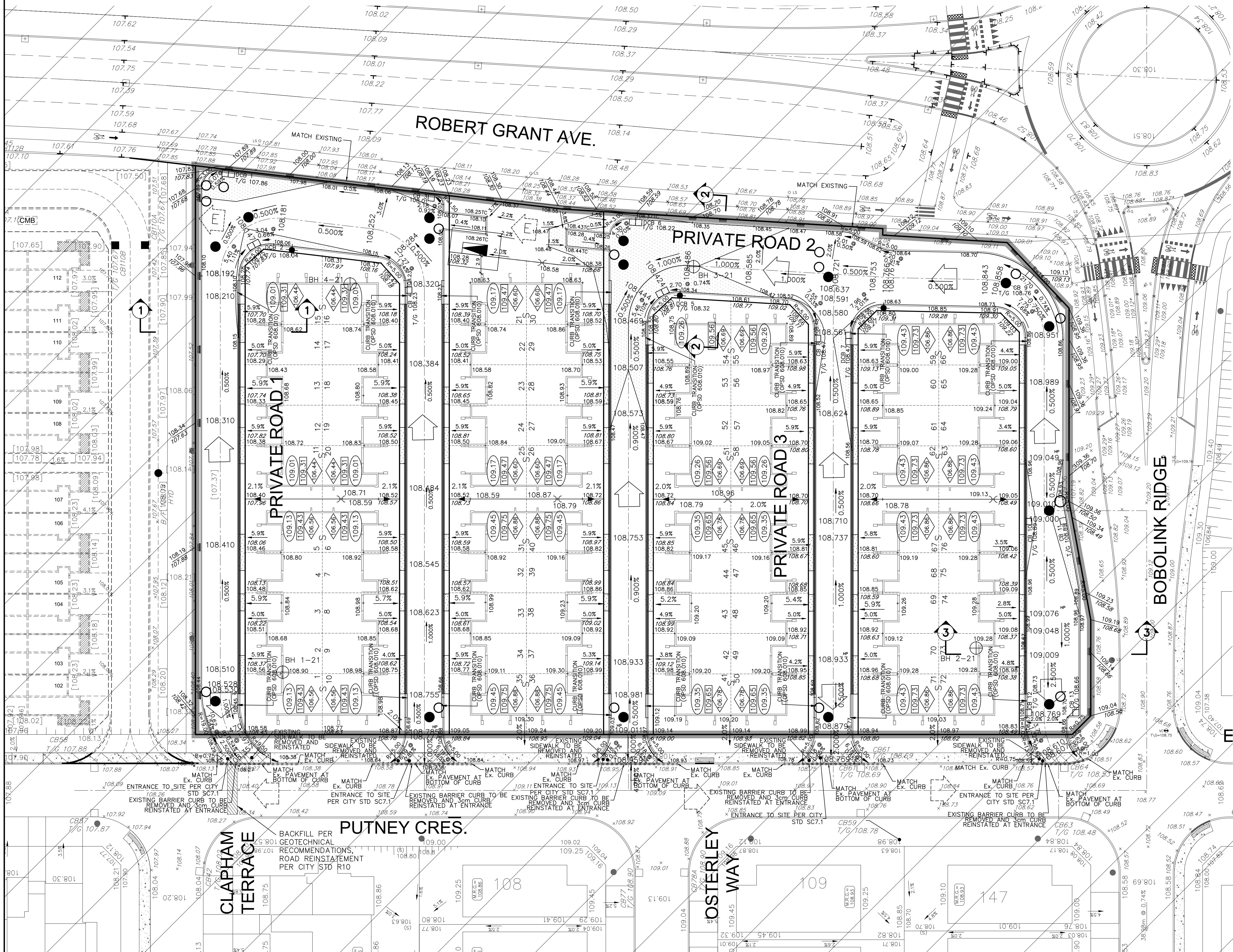
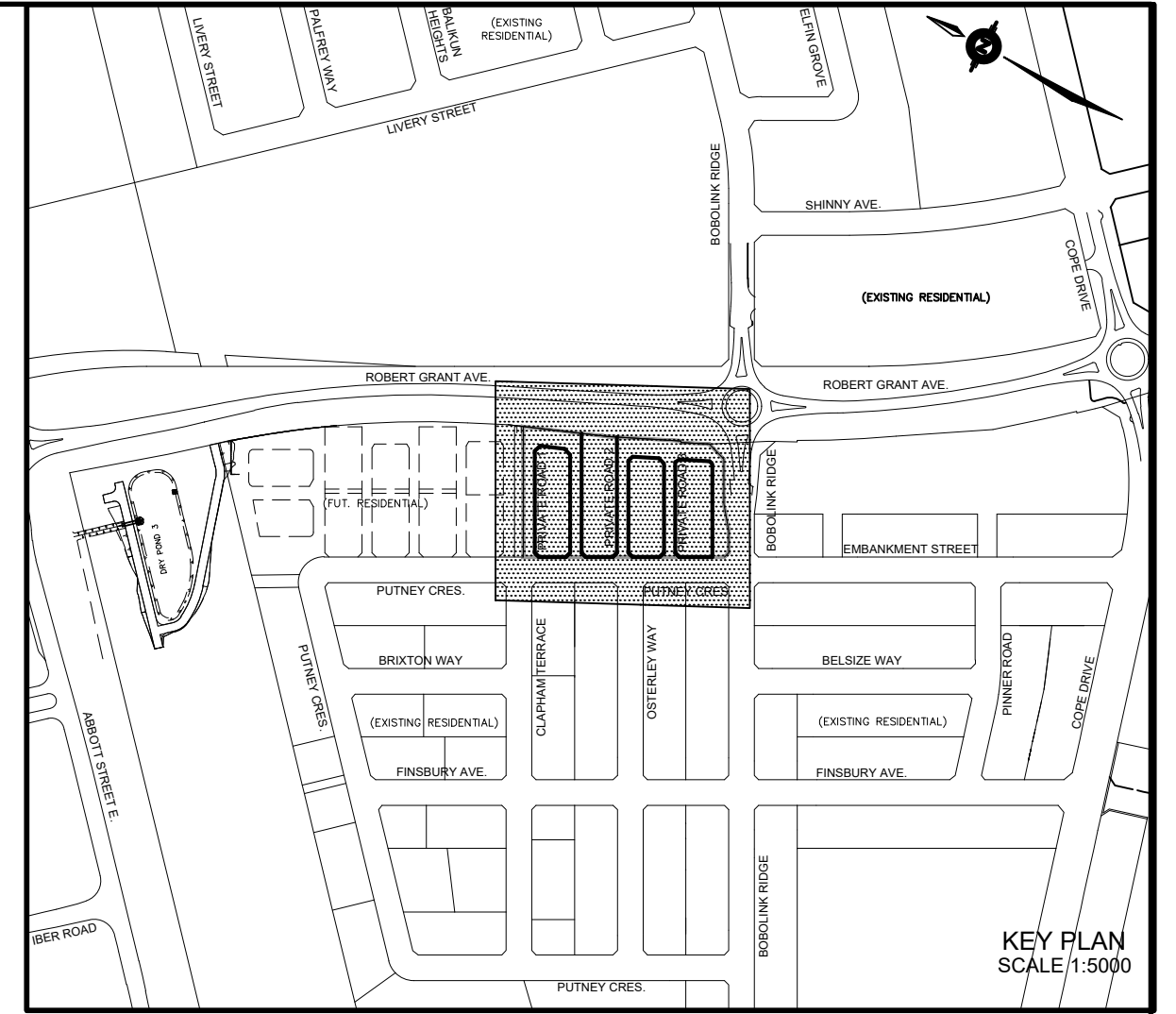
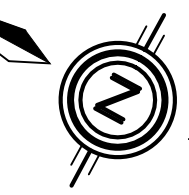
PERMISSION REQUIRED FOR WORK ON ADJACENT LANDS

GRADING AND SERVICING FOR ADJACENT CONDO BLOCK WEST OF PROPERTY PER IBI GRADING AND SERVICING PLANS, RECEIVED AUGUST 6, 2021.

GRADING FOR SUBDIVISION PER IBI PROJECT No. 27970 - REV 16, DATED JUNE 27, 2019.

SERVICING FOR SUBDIVISION PER IBI PROJECT No. 27970 - REV 18, DATED JANUARY 11, 2019.

COMPOSITE UTILITY PLAN OF SUBDIVISION PER IBI PROJECT No. 27970 - REV 7, DATED NOVEMBER 29, 2018.



LEGEND

PROPOSED ELEVATION	103.45	OVERLAND FLOW DIRECTION	
EXISTING ELEVATION	102.73	EXTERNAL OVERLAND FLOW DIRECTION	
FUTURE ELEVATION	[93.00]	EMERGENCY OVERLAND FLOW DIRECTION	
PROPOSED SWALE GRADE	1.5%	RETAINING WALL AND ELEVATIONS	
HIGH POINT	102.16	CHAIN LINK FENCE (1.5m UNLESS OTHERWISE NOTED)	
STREET CATCHBASIN		NOISE BARRIER (3.0m UNLESS OTHERWISE NOTED)	
STREET CATCHBASIN WITH CLOSED LID		DECORATIVE FENCE (SEE LANDSCAPE DWGS FOR DETAIL)	
CATCHBASIN MANHOLE		CONSTRUCTION FENCE	
HYDRANT, VALVE & VB		PROPERTY BOUNDARY	
VALVE & VB		UNITS REQUIRING WATER PRESSURE REDUCING VALVES	
BUILDING ENVELOPE		WALKOUT UNITS	
TOP OF FOUNDATION (TOF)		SLAB ON GRADE	
FINISHED FLOOR ELEVATION (FFE)		HYDRO SWITCHGEAR	
UNDERSIDE OF FOOTING ELEVATION (USF)		HYDRO TRANSFORMER	
UNITS REQUIRING WATER PRESSURE REDUCING VALVES		STREET LIGHT STANDARD	
WALKOUT UNITS		TACTILE WALKING SURFACE INDICATOR (AS PER CITY OF OTTAWA STD. SC6)	
SLAB ON GRADE		PREVIOUS PHASES / PHASES NOT PART OF CURRENT GRADING APPROVAL	
HYDRO SWITCHGEAR			
HYDRO TRANSFORMER			
STREET LIGHT STANDARD			
TACTILE WALKING SURFACE INDICATOR (AS PER CITY OF OTTAWA STD. SC6)			
PREVIOUS PHASES / PHASES NOT PART OF CURRENT GRADING APPROVAL			

NOT FOR CONSTRUCTION

1	S.L.M.	22-01-13	1st SUBMISSION
No.	BY	DATE	DESCRIPTION
TOPOGRAPHIC INFORMATION			
TOPOGRAPHIC INFORMATION PROVIDED BY ANNIS, O'SULLIVAN, VOLLEBEKK LTD. PROJECT No. 22111-21 RECEIVED JUNE 24, 2021			
LEGAL INFORMATION			
CALCULATED M-PLAN PROVIDED BY ANNIS, O'SULLIVAN, VOLLEBEKK LTD., PROJECT No. 22111-21. RECEIVED DECEMBER 13, 2021.			
BENCH MARK			
SITE BENCHMARK #1, FIRE HYDRANT TOP OF SPINDLE ELEVATION = 109.78m			
SITE BENCHMARK #2, CP IN ASPHALT ELEVATION = 109.09			
TAMARACK HOMES		BOBOLINK RIDGE BLOCK 343	

DSEL LICENSED PROFESSIONAL ENGINEER
 S.L. MERRICK
 10016623
 2022-01-13
 PROVINCE OF ONTARIO

Ottawa
 110 Laurier Ave W
 Ottawa, Ontario, K1P 1J1
 Tel. (613) 580-2400
 www.Ottawa.ca

GRADING PLAN

DRAWN BY:	G.G.G.	CHECKED BY:	S.L.M.	PROJECT No.	21-1261
DESIGNED BY:	G.G.G.	CHECKED BY:	S.L.M.	SHEET No.	12
SCALE:	1:300				

CITY PLAN No. XXXXX
 CITY FILE No. D07-XX-XX-XXXX