

NOTE:
ALL WATERMAIN CONNECTIONS AND DECOMMISSIONING OF EXISTING WATERMANS TO BE COMPLETED BY CITY FORCES. TRENCH BACKFILL/REINSTATEMENT TO BE COMPLETED BY THE CONTRACTOR TO THE SATISFACTION OF THE CITY OF OTTAWA.

CONTRACTOR TO VERIFY THE PRECISE LOCATIONS AND INVERT ELEVATIONS OF EX. UNDERGROUND SERVICES AND EX UTILITIES PRIOR TO STARTING CONSTRUCTION

ANY DISTURBED AREA DURING CONSTRUCTION TO BE RESTORED TO THE ORIGINAL CONDITION OR BETTER TO THE SATISFACTION OF THE AUTHORITIES HAVING JURISDICTION

NOTE:
ALL EXISTING TREES, SHRUBS ETC. WITHIN LOTS, BLOCKS AND ROAD RIGHTS-OF-WAY TO BE REMOVED, UNLESS OTHERWISE NOTED

NOTE:
FOR WATERMAIN CROSSING BELOW AND ABOVE SEWERS, REFER TO CITY STD. W25 AND W25.2, RESPECTIVELY, WHERE APPLICABLE.

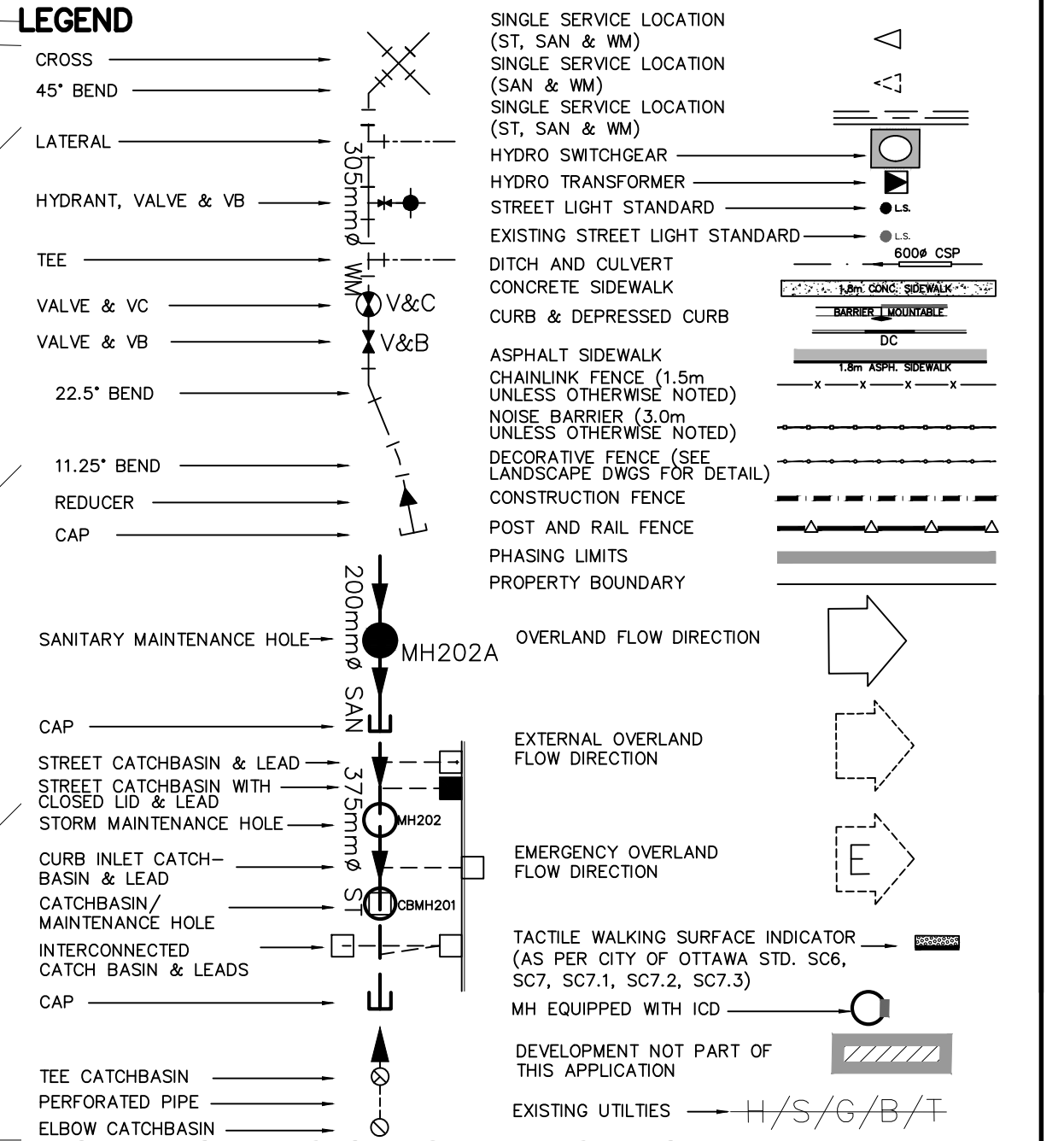
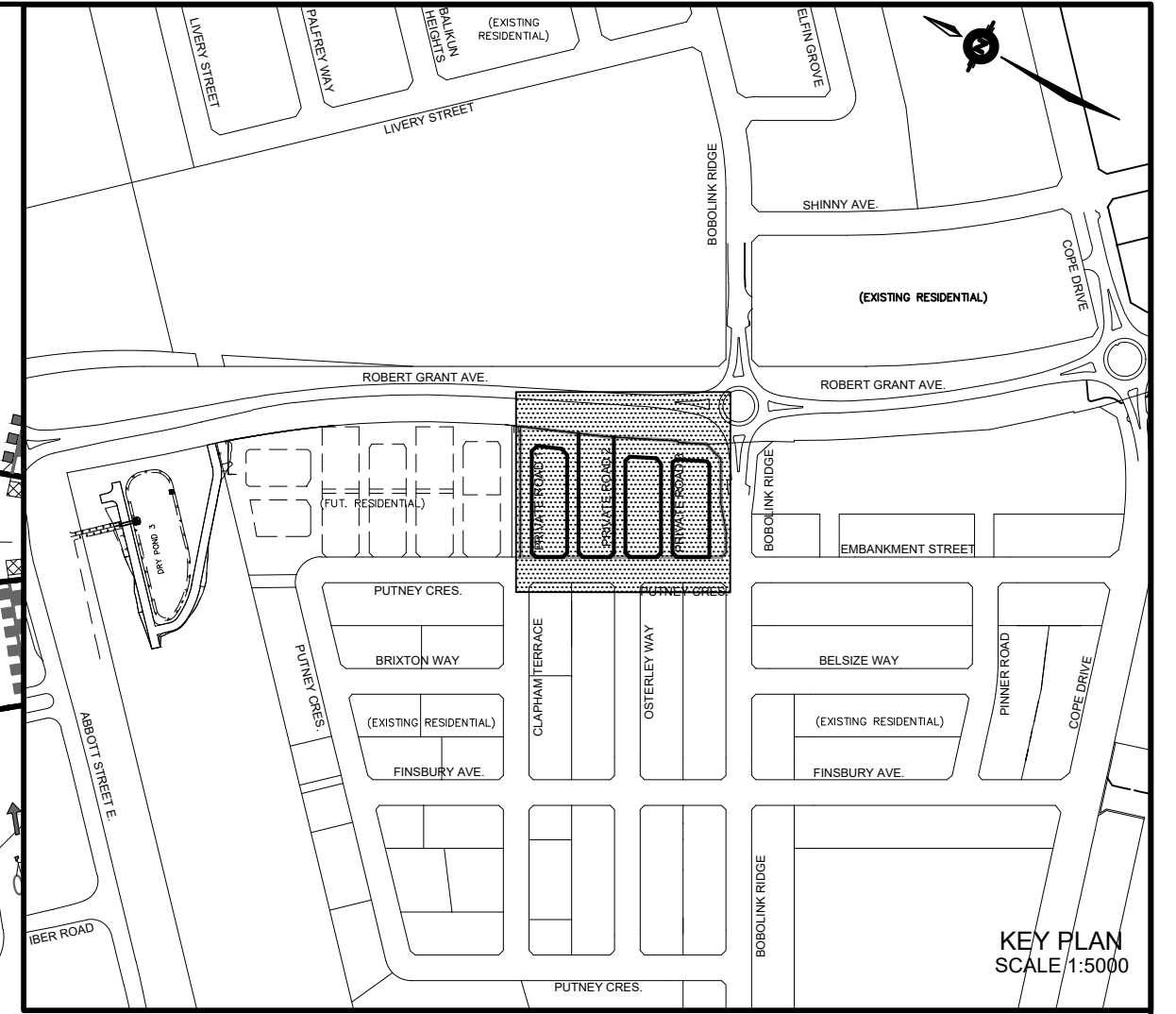
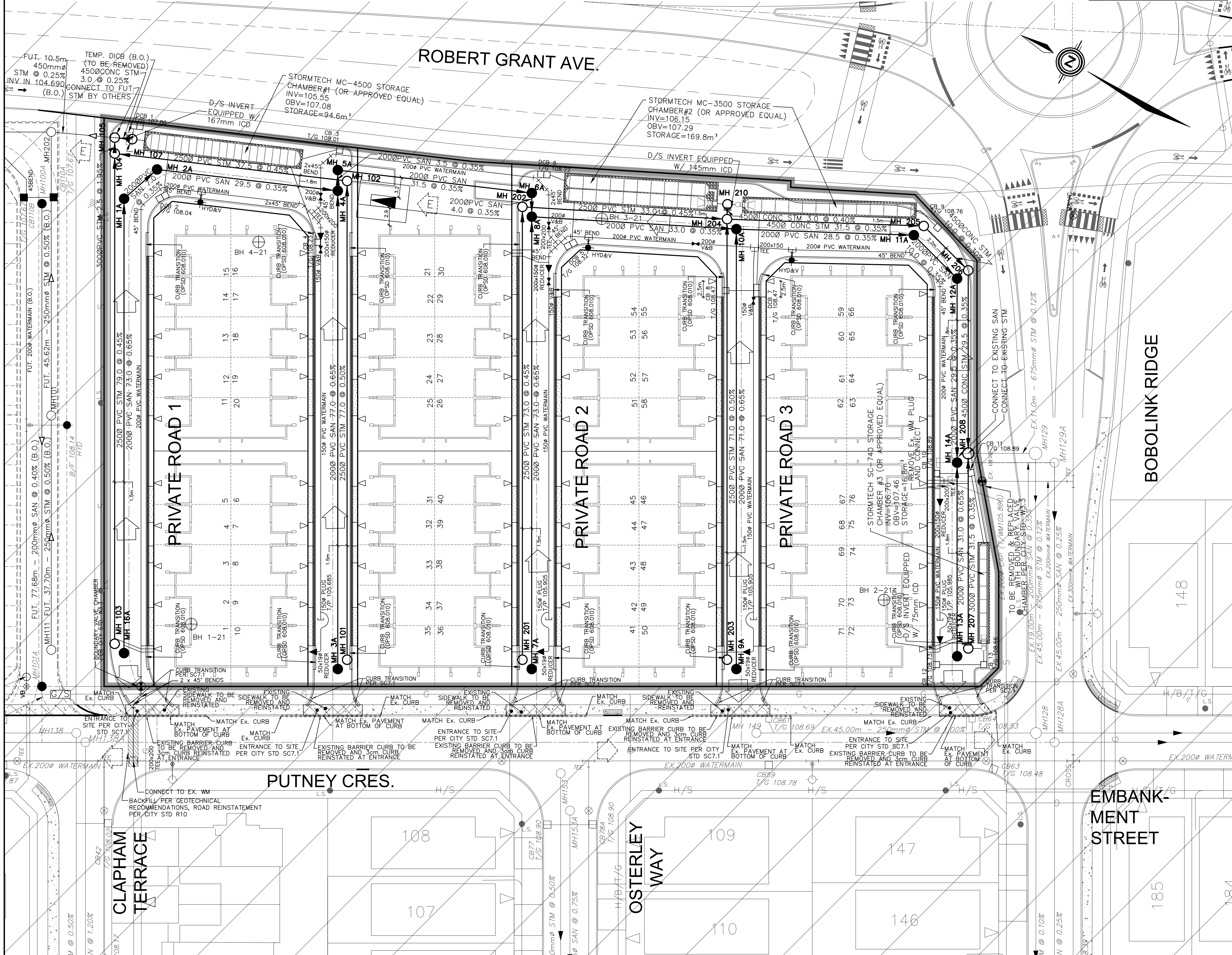
NOTE: RE: WATERMAIN / WATER SERVICE
1. INSULATION REQUIRED FOR WATERMAIN / WATER SERVICE WHERE THE SEPARATION BETWEEN WATERMAIN / WATER SERVICE AND OTHER SERVICES AND STRUCTURES IS LESS THAN 1.2m AND THE COVER IS LESS THAN 2.4m. REFER TO CITY STD. W23 FOR DETAIL.
2. FOR SERVICE INSTALLATION AT SEWER CROSSING, REFER TO CITY STD. W38 FOR DETAIL.

NOTE:
FOR WATERMAIN STUBS, 2.4m MIN. COVER TO BE PROVIDED

NOTE:
FOR WATERMAIN LAYOUT AT DEAD-END STREETS REFER TO CITY STD. W37.2

NOTE: RE: TEST PIT/BOREHOLE EXCAVATIONS
ANY DISTURBED MATERIAL ENCOUNTERED BELOW THE SUBGRADE LEVEL WITHIN A BUILDING FOOTPRINT TO BE SUB-EXCAVATED AND BACKFILLED WITH COMPACTED ENGINEERED FILL AS PER GEOTECHNICAL ENGINEERS RECOMMENDATION.

NOTE:
UNDERGROUND STORAGE TANK VOLUMES EXCLUDE VOLUME IN THE BASE STON BELOW THE INVERT OF THE STORAGE TANK



NOT FOR CONSTRUCTION

1	S.L.M.	22-01-13	1st SUBMISSION
No.	BY	DATE	DESCRIPTION

TOPOGRAPHIC INFORMATION
TOPOGRAPHIC INFORMATION PROVIDED BY ANNIS, O'SULLIVAN, VOLLEBEKK LTD. PROJECT No. 22111-21 RECEIVED JUNE 24, 2021

LEGAL INFORMATION
CALCULATED M-PLAN PROVIDED BY ANNIS, O'SULLIVAN, VOLLEBEKK LTD., PROJECT No. 22111-21. RECEIVED DECEMBER 13, 2021.

BENCH MARK
SITE BENCHMARK #1, FIRE HYDRANT TOP OF SPINDLE
ELEVATION = 109.78m
SITE BENCHMARK #2, CP IN ASPHALT
ELEVATION = 109.09

TAMARACK HOMES **BOBOLINK RIDGE BLOCK 343**

DSEL **PROFESSIONAL ENGINEER**
S.L. MERRICK
10166523
2022-01-13
PROVINCE OF ONTARIO

120 Ier Road Unit 103
Slitsville, Ontario, K2S 1E9
Tel. (613) 836-0856
Fax. (613) 836-7183
www.DSEL.ca

Ottawa

110 Laurier Ave W
Ottawa, Ontario, K1P 1J1
Tel. (613) 580-2400
www.Ottawa.ca

© DSEL

GENERAL PLAN

DRAWN BY: G.G.G.	CHECKED BY: S.L.M.	PROJECT No. 21-1261
DESIGNED BY: G.G.G.	CHECKED BY: S.L.M.	SHEET No. 5
SCALE: 1:300		

CITY PLAN No. XXXXX
CITY FILE No. D07-XX-XX-XXXX