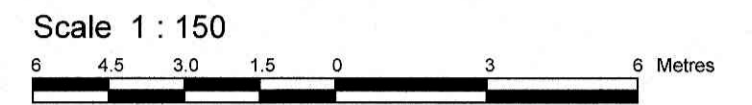


TOPOGRAPHICAL SKETCH OF  
**LOT 18 AND PART OF LOT 19**  
**REGISTERED PLAN 28**  
**CITY OF OTTAWA**

Prepared by Annis, O'Sullivan, Vollebek Ltd.  
 Field Work Completed May 14, 2018



**Metric**  
 DISTANCES SHOWN ON THIS PLAN ARE IN METRES AND  
 CAN BE CONVERTED TO FEET BY DIVIDING BY 0.3048

June 6, 2018  
 Date *A.J. Broxham*  
 Andrew J. Broxham, O.L.S.

**Notes & Legend**

Denotes

○ MH-ST	"	Maintenance Hole (Storm Sewer)
○ MH-S	"	Maintenance Hole (Sanitary)
□ CB	"	Catch Basin
⊕ VC	"	Valve Chamber (Watermain)
○ LS	"	Light Standard
○ FH	"	Fire Hydrant
⊕ WV	"	Water Valve
T/G	"	Top of Grade
∅	"	Diameter
+ 65.00	"	Location of Elevations
+ 65.00*	"	Top of Concrete Curb / Retaining wall Elevation
⊙	"	Deciduous Tree
BF	"	Board Fence
CLF	"	Chain Link Fence
CRW	"	Concrete Retaining Wall
MP	"	Metal Plate
— OHW —	"	Overhead Wires

Bearings are grid, referred to the Central Meridian of MTM Zone 9  
 ( 76°30' West Longitude ) NAD-83 (original).

SITE AREA = 1414 m<sup>2</sup>

*Saïde Sayah*  
 SAÏDE SAYAH  
 MANAGER, CENTRAL BRANCH  
 PLANNING, INFRASTRUCTURE & ECONOMIC  
 DEVELOPMENT DEPARTMENT, CITY OF OTTAWA

**APPROVED**  
 By Saïde Sayah at 5:51 pm, Jan 25, 2021

**ELEVATION NOTES**

- Elevations shown are geodetic and are referred to the CGVD28 geodetic datum.
- It is the responsibility of the user of this information to verify that the job benchmark has not been altered or disturbed and that its relative elevation and description agrees with the information shown on this drawing.

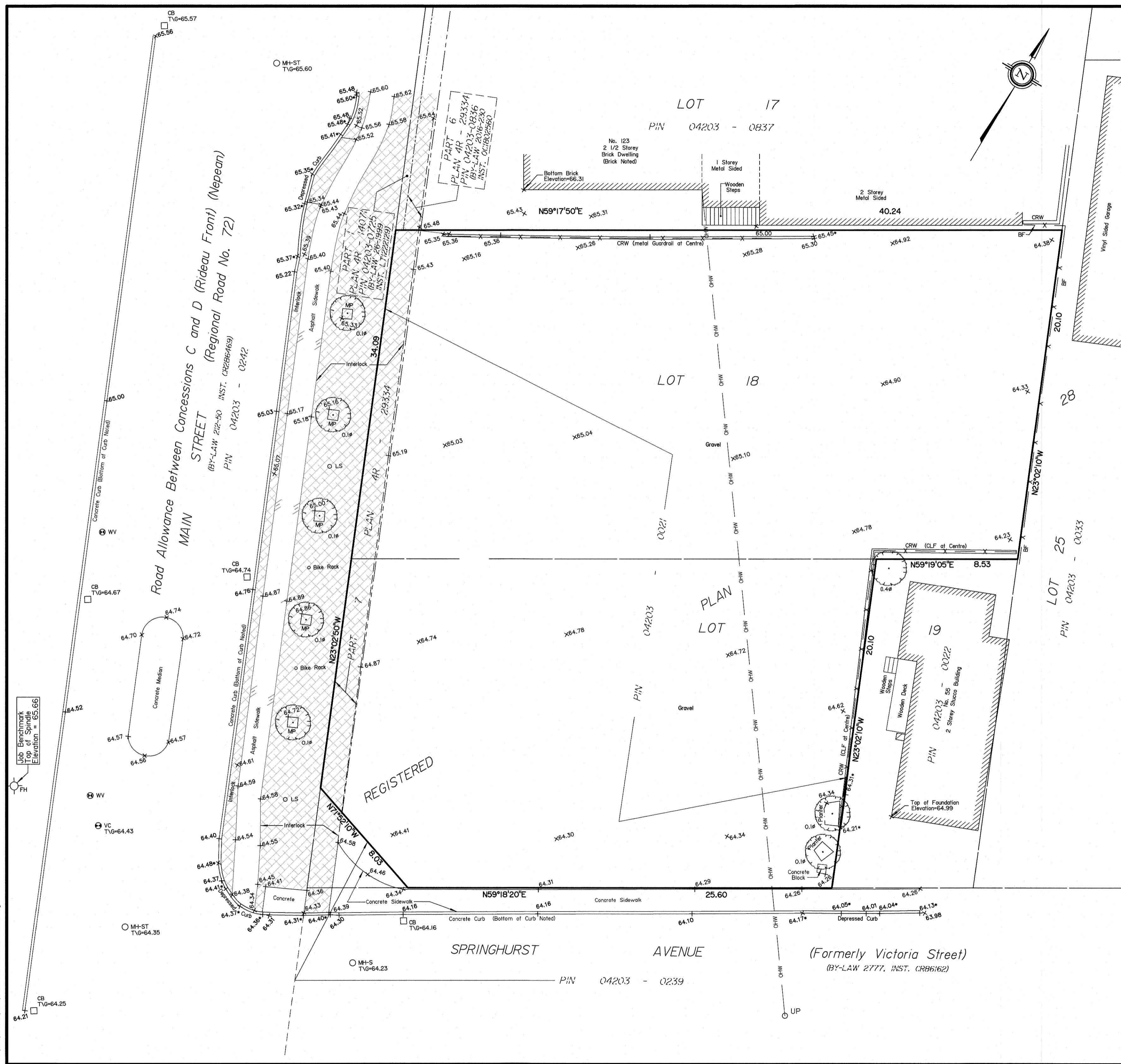
**UTILITY NOTES**

- This drawing cannot be accepted as acknowledging all of the utilities and it will be the responsibility of the user to contact the respective utility authorities for confirmation.
- Only visible surface utilities were located.
- A field location of underground plant by the pertinent utility authority is mandatory before any work involving breaking ground, probing, excavating etc.

© Annis, O'Sullivan, Vollebek Ltd., 2018. "THIS PLAN IS PROTECTED BY COPYRIGHT"

**ANNIS, O'SULLIVAN, VOLLEBEK LTD.**  
 14 Concourse Gate, Suite 500  
 Nepean, Ont. K2E 7S6  
 Phone: (613) 727-0850 / Fax: (613) 727-1079  
 Email: Nepean@avold.com

**Ontario Land Surveyors** Job No. 17941-18 Lot 18 Pt L1 19 PL 28 SK F FS



Y:\2018\17941-18 Lot 18 Pt L1 19 PL 28 SK F.dwg