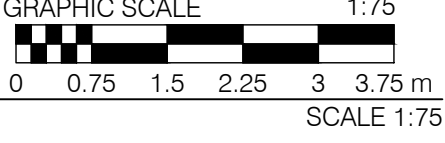
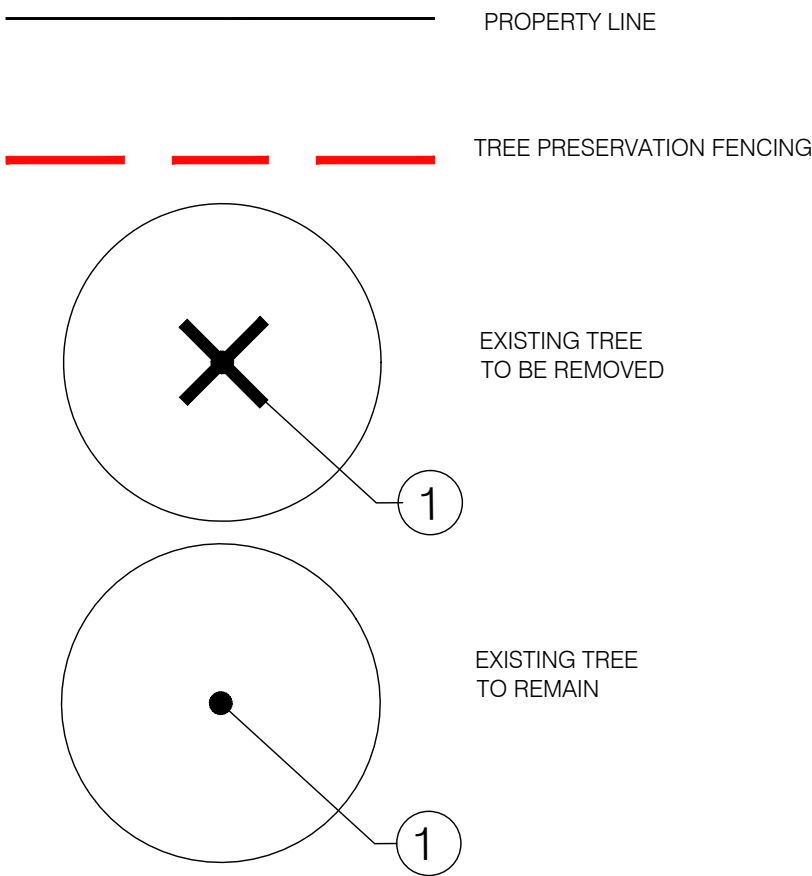




1 PRE-DEVELOPMENT VEGETATION MAP



LEGEND:



455 MCARTHUR AVE TREE INVENTORY				
NO.	SPECIES	DBH (CM)	HEALTH	COMMENTS
1	Norway maple / Acer platanoides	54.5	Fair	
2	Siberian Elm / Ulmus pumila	12	Fair	
3	Siberian Elm / Ulmus pumila	20	Fair	
4	Norway maple / Acer platanoides	19	Good	
5	Norway maple / Acer platanoides	16	Good	
6	Norway maple / Acer platanoides	19	Good	
7	Black Locust / Robinia pseudoacacia	29	Good	
8	Black Locust / Robinia pseudoacacia	21	Good	
9	Black Locust / Robinia pseudoacacia	32	Good	
10	Black Locust / Robinia pseudoacacia	24	Good	
11	Norway maple / Acer platanoides	21	Good	
12	Norway maple / Acer platanoides	19	Good	



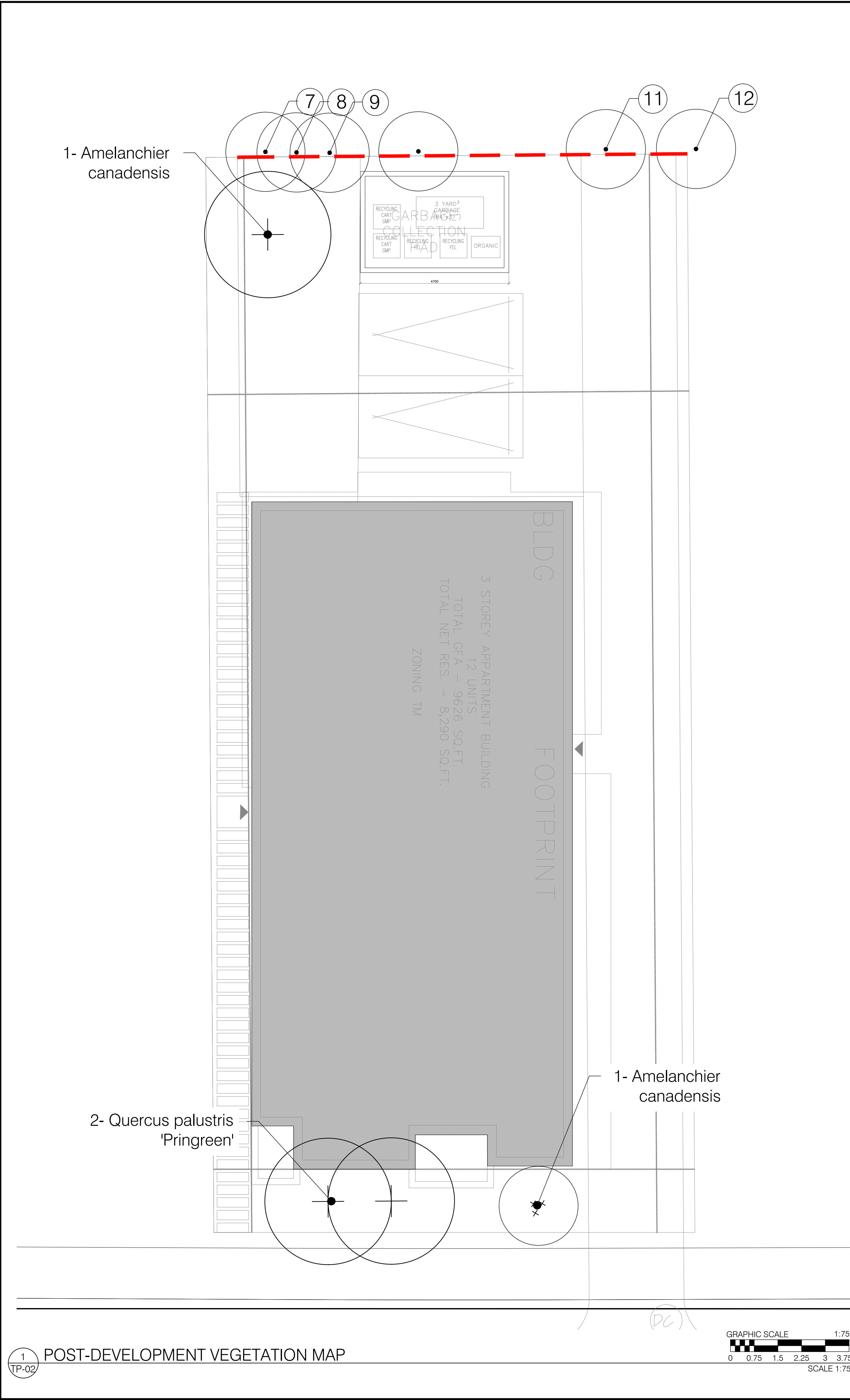
LOCATION PLAN. NTS.

1. ALL GENERAL SITE INFORMATION AND CONDITIONS COMPILED FROM EXISTING PLANS AND SURVEYS.
2. REFER TO ENGINEERING DRAWINGS FOR GRADING AND SERVING LAYOUTS.
3. THE LOCATION OF THE TREES SHOWN ON THIS PLAN IS APPROXIMATE AND SHALL NOT BE SCALED FROM THIS DRAWING. THE PLAN MUST BE READ IN CONJUNCTION WITH ALL ENGINEERING DRAWINGS AND THE RESTRICTIONS LISTED BELOW IN ORDER TO SITE EACH INDIVIDUAL TREE.
4. DO NOT SCALE THIS DRAWING.
5. REPORT ANY DISCREPANCIES PRIOR TO COMMENCING WORK. NO RESPONSIBILITY IS BORN BY THE CONSULTANT FOR UNKNOWN SUBSURFACE CONDITIONS.
6. CONTRACTOR TO CHECK AND VERIFY ALL DIMENSIONS ON SITE AND REPORT ANY ERRORS AND/OR OMISSIONS TO THE CONSULTANT.
7. REINSTATE ALL AREAS AND ITEMS DAMAGED AS A RESULT OF CONSTRUCTION ACTIVITIES TO THE SATISFACTION OF THE CONSULTANT, INCLUDING AREAS BEYOND THE PROPERTY LINE.
8. DRAWING MAY NOT BE USED FOR CONSTRUCTION UNTIL SIGNED BY LANDSCAPE ARCHITECT AS ISSUED FOR CONSTRUCTION.
9. THE ACCURACY OF THE POSITION OF UTILITIES IS NOT GUARANTEED.
10. INDIVIDUAL UTILITY COMPANY MUST BE CONTACTED FOR CONFIRMATION OF UTILITY EXISTENCE AND LOCATION PRIOR TO DIGGING.
11. THIS DRAWING IS AN INSTRUMENT OF SERVICE AND REQUIRES THE PERMISSION OF THE LANDSCAPE ARCHITECT FOR USE. COPYRIGHT IS RESERVED BY LASHLEY + ASSOCIATES CORPORATION.
12. THE INSTALLER SHALL ENSURE THAT ALL UTILITY LOCATES ARE OBTAINED PRIOR TO ANY EXCAVATION FOR LANDSCAPING.
13. THE LANDSCAPE ARCHITECT CERTIFIES THAT THE PROPOSED LOCATION OF TREES DOES NOT CONFLICT WITH INFRASTRUCTURE OR UTILITY INSTALLATIONS AS IDENTIFIED ON THE APPROVED COMPOSITE UTILITY PLAN AT THE TIME OF DRAWING PREPARATION.

3	2020-10-01	RE-ISSUED FOR SITE PLAN
2	2020-09-04	ISSUED FOR SITE PLAN
1	2020-08-27	ISSUED FOR REVIEW

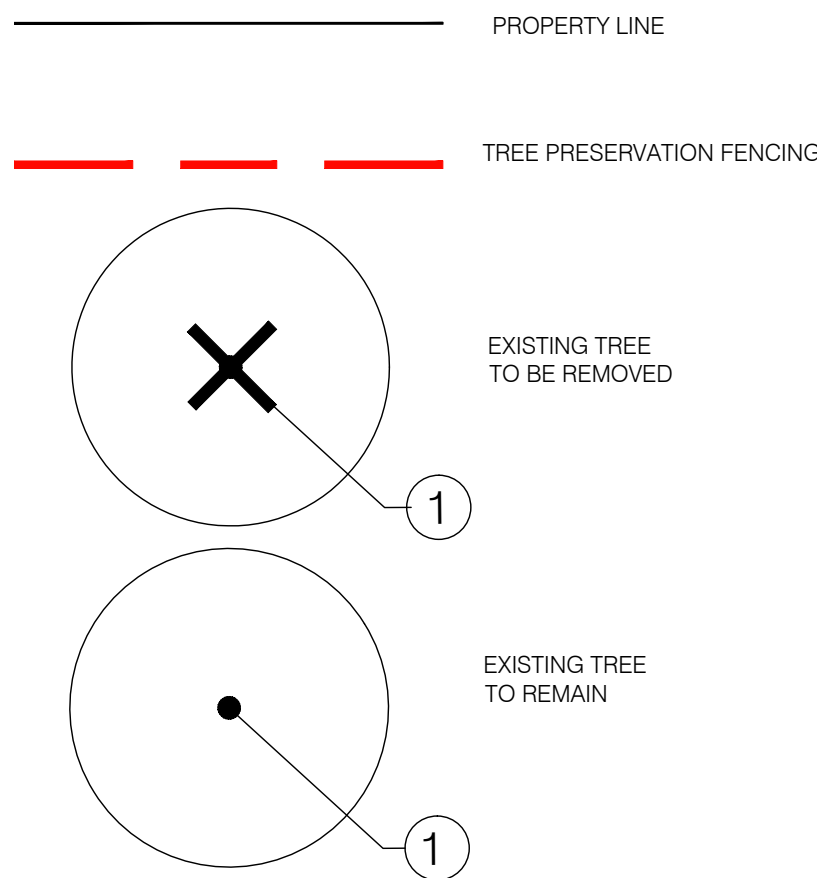
NO.	DATE	DESCRIPTION
SEAL:		
		NORTH:
<p>LASHLEY + ASSOCIATES LANDSCAPE ARCHITECTURE & SITE ENGINEERING 202-250 GLADSTONE AVENUE OTTAWA, ON K1Y 3E8 T 613 233 8579 F 613 233 4051 W LashleyLA.com</p>		

CONSULTANT:	
PROJECT:	
455 MCARTHUR MULTI RESIDENTIAL MCARTHUR AVENUE OTTAWA, ONTARIO	
DRAWING TITLE:	
PRE-DEVELOPMENT VEGETATION MAP	
DATE:	2020-08-27
SCALE:	1:75
DRAWN BY:	E.L.
LA PROJECT NO.	20775-1
DRAWING NO.:	
TP-01	



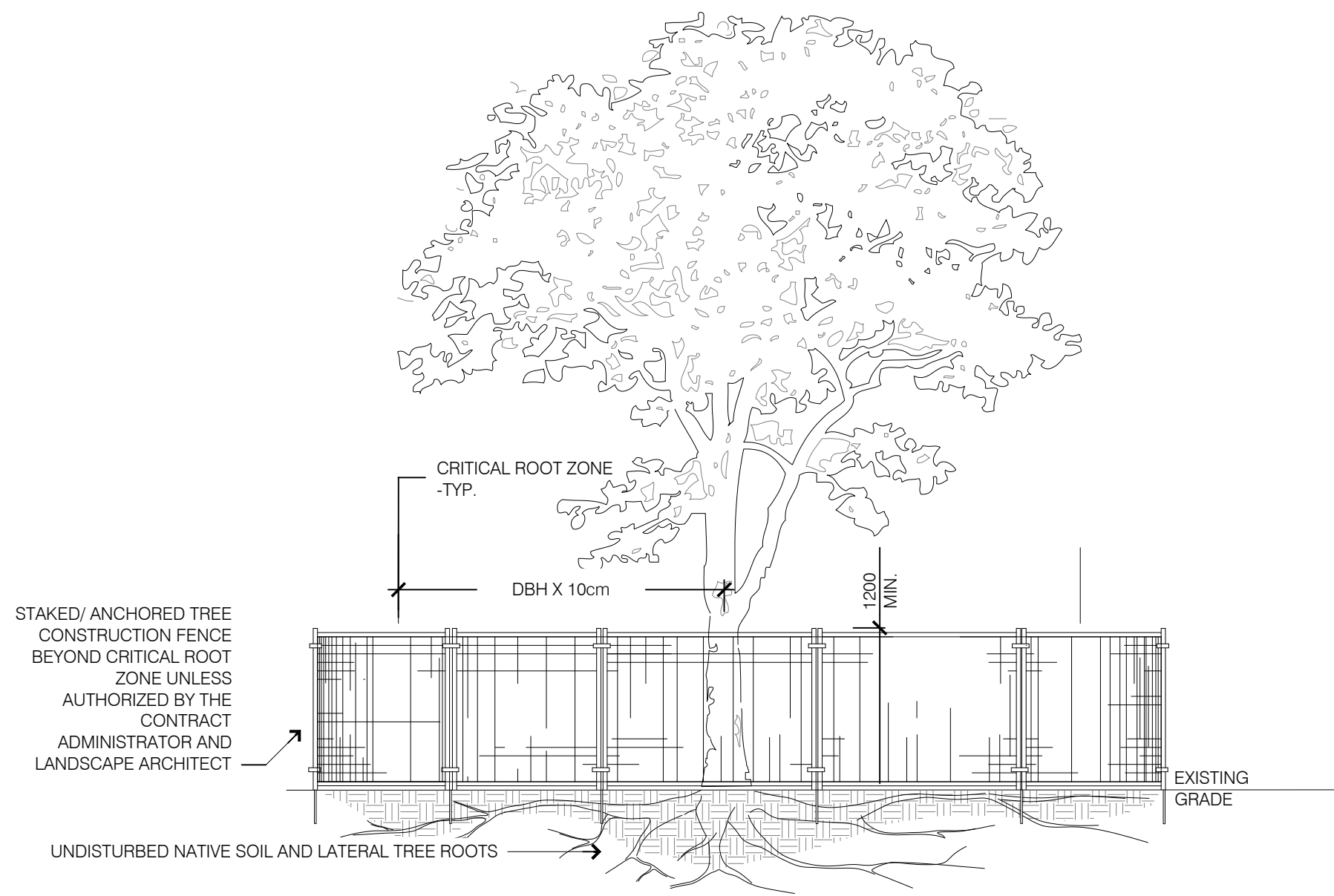
1 POST-DEVELOPMENT VEGETATION MAP
TP-02

LEGEND:



455 MCARTHUR AVE TREES TO BE RETAINED				
NO.	SPECIES	DBH (CM)	HEALTH	COMMENTS
7	Black Locust / Robinia pseudoacacia	29	Good	
8	Black Locust / Robinia pseudoacacia	21	Good	
9	Black Locust / Robinia pseudoacacia	32	Good	
10	Black Locust / Robinia pseudoacacia	24	Good	
11	Norway maple / Acer platanoides	21	Good	
12	Norway maple / Acer platanoides	19	Good	

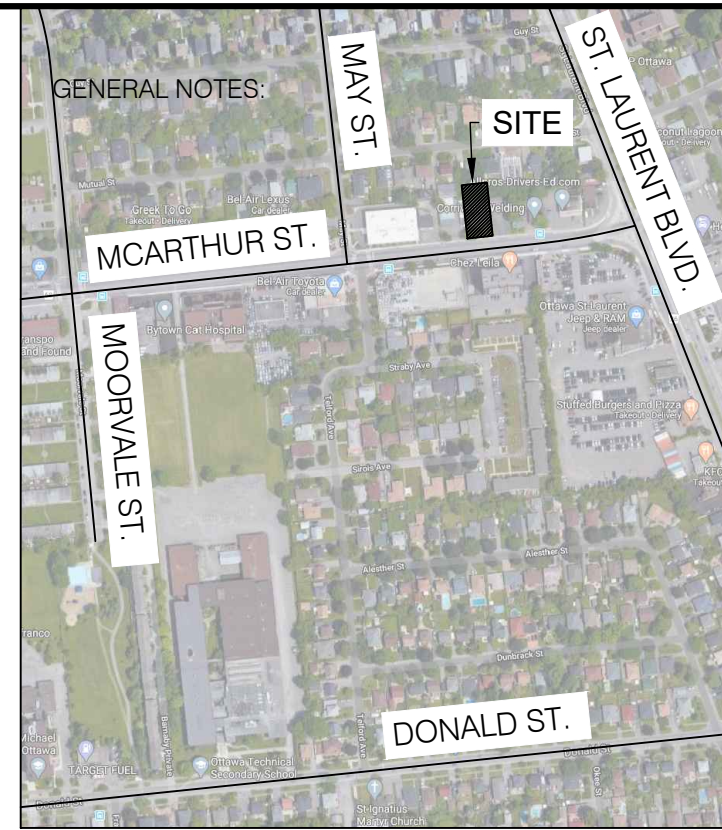
455 MCARTHUR AVE TREES TO BE REMOVED				
NO.	SPECIES	DBH (CM)	HEALTH	COMMENTS
1	Norway maple / Acer platanoides	54.5	Fair	
2	Siberian Elm / Ulmus pumila	12	Fair	
3	Siberian Elm / Ulmus pumila	20	Fair	
4	Norway maple / Acer platanoides	19	Good	
5	Norway maple / Acer platanoides	16	Good	
6	Norway maple / Acer platanoides	19	Good	



- NOTES:
THE FOLLOWING PROTECTION MEASURES MUST BE IMPLEMENTED FOR RETAINED TREES, BOTH WITHIN THE WORK AREA AND ON ADJACENT PARCELS.
- UNDER THE GUIDANCE OF AN ARBORIST, ERECT A FENCE AT THE CRITICAL ROOT ZONE (CRZ) OF TREES WHERE THE CRZ IS ESTABLISHED AS BEING 10 CENTIMETERS FROM THE TRUNK FOR EVERY CENTIMETER OF TRUNK DIAMETER AT BREAST HEIGHT.
 - TREE PROTECTION SHALL BE ERECTED TO PROVIDE A CONTINUOUS BARRICADE BETWEEN DESIGNATED TREES AND THE WORK AREA PRIOR TO CONSTRUCTION.
 - TUNNEL OR BORE WHEN DIGGING WITHIN THE CRZ OF A TREE.
 - ENSURE ALL EQUIPMENT AND CONSTRUCTION RELATED MATERIAL ARE NOT PLACED OR TEMPORARILY STORED WITHIN THE CRZ.
 - ENSURE EXHAUST FUMES FROM ALL EQUIPMENT ARE NOT DIRECTED TOWARDS ANY TREE'S CANOPY.
 - FLOODING OR DEPOSITION OF SEDIMENT SHALL BE PREVENTED WHERE TREES ARE LOCATED.
 - ALL DISTURBED ROOT SYSTEMS SHALL BE EXPOSED AND BACKFILLED IN ONE CONTINUOUS OPERATION TO MINIMIZE DESICCATION.
 - EXPOSED ROOTS SHALL BE KEPT CONTINUOUSLY MOIST DURING EXCAVATION.
 - REMOVE BROKEN AND DAMAGED ROOTS WITH SHARP PRUNING SHEARS.
 - THE TREE PROTECTION FENCE IS TEMPORARY, SHALL BE MAINTAINED AT ALL TIMES DURING CONSTRUCTION OPERATIONS, AND SHALL BE REMOVED UPON COMPLETION OF WORK WHEN AGREED TO BY THE CONTRACT ADMINISTRATOR AND LANDSCAPE ARCHITECT.

2 TREE PRESERVATION FENCING
TP-02

SCALE 1:75



LOCATION PLAN. NTS.

- ALL GENERAL SITE INFORMATION AND CONDITIONS COMPILED FROM EXISTING PLANS AND SURVEYS.
- REFER TO ENGINEERING DRAWINGS FOR GRADING AND SERVING LAYOUTS.
- THE LOCATION OF THE TREES SHOWN ON THIS PLAN IS APPROXIMATE AND SHALL NOT BE SCALED FROM THIS DRAWING. THE PLAN MUST BE READ IN CONJUNCTION WITH ALL ENGINEERING DRAWINGS AND THE RESTRICTIONS LISTED BELOW IN ORDER TO SITE EACH INDIVIDUAL TREE.
- DO NOT SCALE THIS DRAWING.
- REPORT ANY DISCREPANCIES PRIOR TO COMMENCING WORK. NO RESPONSIBILITY IS BORN BY THE CONSULTANT FOR UNKNOWN SUBSURFACE CONDITIONS.
- CONTRACTOR TO CHECK AND VERIFY ALL DIMENSIONS ON SITE AND REPORT ANY ERRORS AND/OR OMISSIONS TO THE CONSULTANT.
- REINSTATE ALL AREAS AND ITEMS DAMAGED AS A RESULT OF CONSTRUCTION ACTIVITIES TO THE SATISFACTION OF THE CONSULTANT, INCLUDING AREAS BEYOND THE PROPERTY LINE.
- DRAWING MAY NOT BE USED FOR CONSTRUCTION UNTIL SIGNED BY LANDSCAPE ARCHITECT AS ISSUED FOR CONSTRUCTION.
- THE ACCURACY OF THE POSITION OF UTILITIES IS NOT GUARANTEED.
- INDIVIDUAL UTILITY COMPANY MUST BE CONTACTED FOR CONFIRMATION OF UTILITY EXISTENCE AND LOCATION PRIOR TO DIGGING.
- THIS DRAWING IS AN INSTRUMENT OF SERVICE AND REQUIRES THE PERMISSION OF THE LANDSCAPE ARCHITECT FOR USE. COPYRIGHT IS RESERVED BY LASHLEY + ASSOCIATES CORPORATION.
- THE INSTALLER SHALL ENSURE THAT ALL UTILITY LOCATES ARE OBTAINED PRIOR TO ANY EXCAVATION FOR LANDSCAPING.
- THE LANDSCAPE ARCHITECT CERTIFIES THAT THE PROPOSED LOCATION OF TREES DOES NOT CONFLICT WITH INFRASTRUCTURE OR UTILITY INSTALLATIONS AS IDENTIFIED ON THE APPROVED COMPOSITE UTILITY PLAN AT THE TIME OF DRAWING PREPARATION.

3	2020-10-01	RE-ISSUED FOR SITE PLAN
2	2020-09-04	ISSUED FOR SITE PLAN
1	2020-08-27	ISSUED FOR REVIEW

NO.	DATE	DESCRIPTION
SEAL:		
		NORTH:
LASHLEY+ASSOCIATES LANDSCAPE ARCHITECTURE & SITE ENGINEERING 202-250 GLADSTONE AVENUE OTTAWA, ON K1Y 3E8 T 613 233 8579 F 613 233 4051 W LashleyLA.com		

CONSULTANT:

PROJECT:

**455 MCARTHUR
MULTI RESIDENTIAL**
MCARTHUR AVENUE
OTTAWA, ONTARIO

DRAWING TITLE:

POST-DEVELOPMENT
VEGETATION MAP

DATE:	2020-08-27	DRAWING NO.:	
SCALE:	1:100		
DRAWN BY:	S.X.		
LA PROJECT NO.	20775-1		

TP-02

