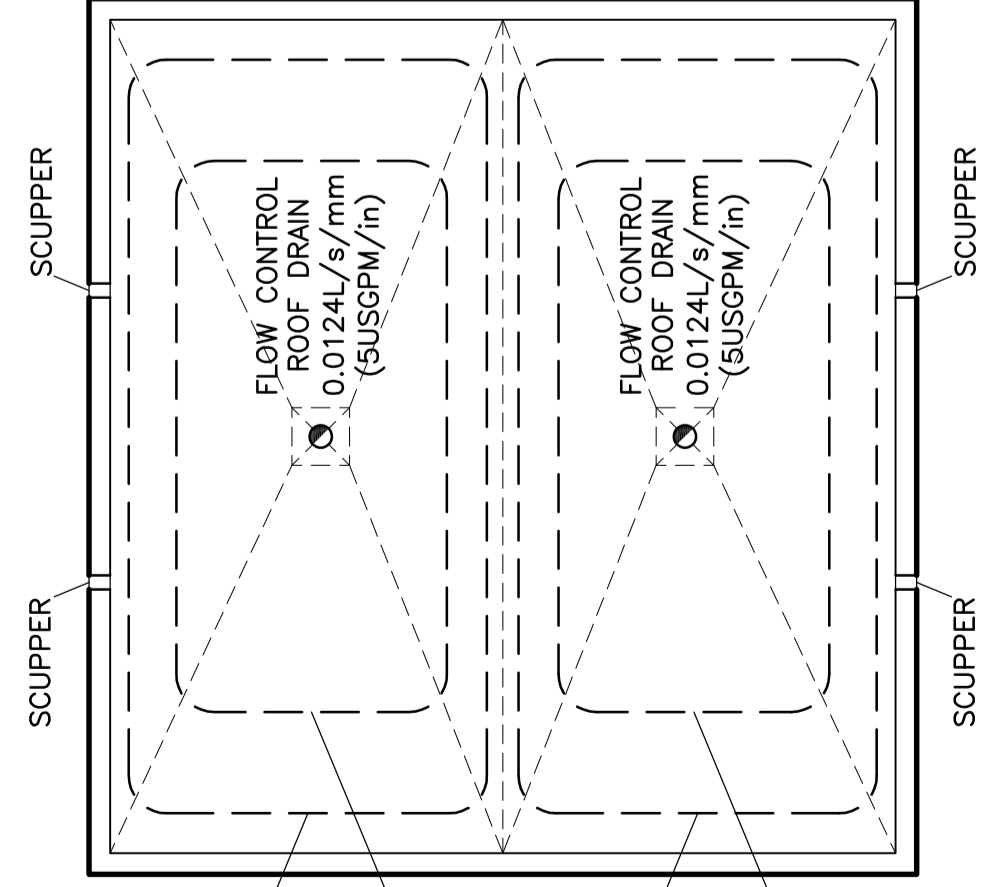
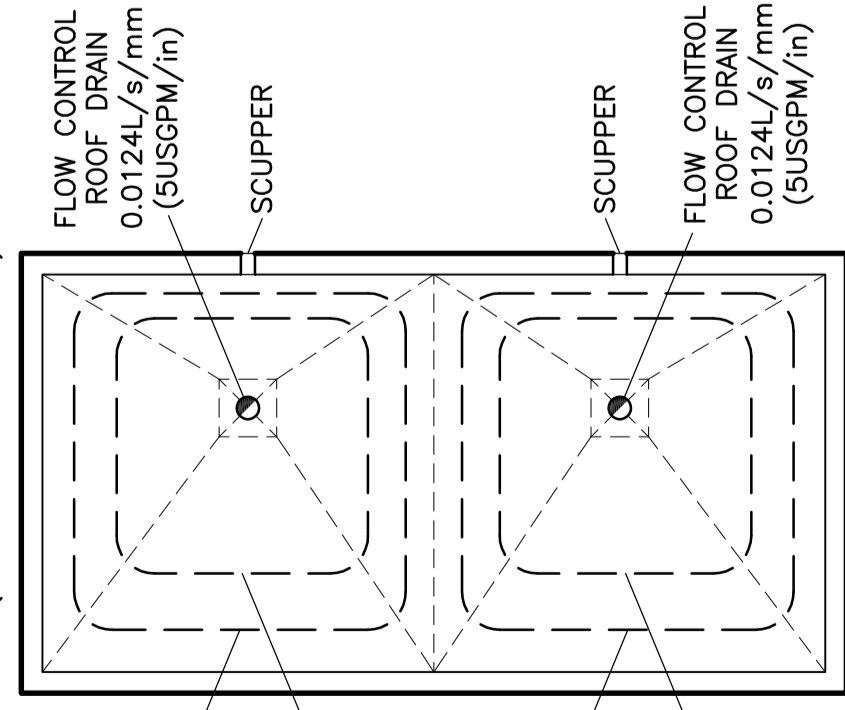


INSTALL A MINIMUM OF 4 SCUPPERS, EACH A MINIMUM 370mm WIDE. BOTTOM OF SCUPPERS SHALL BE 150mm ABOVE ROOF DRAINS (REFER TO ARCHITECTURAL FOR EXACT LOCATIONS AND DETAILS). ROOF SHALL BE DESIGNED TO CARRY THE LOAD OF WATER HAVING A 50mm DEPTH AT SCUPPER OR 200mm DEPTH AT ROOF DRAIN (REFER TO STRUCTURAL).



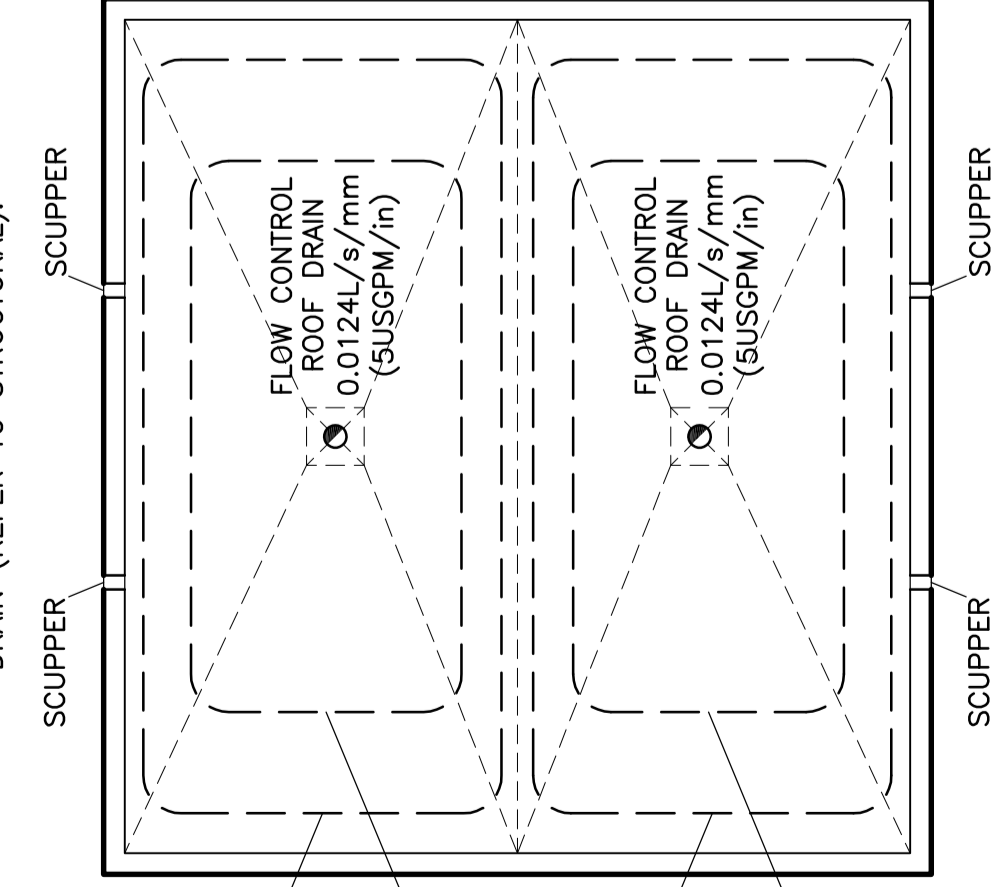
100 YEAR POND DEPTH AT ROOF DRAIN: 137mm  
5 YEAR POND DEPTH AT ROOF DRAIN: 104mm  
100 YEAR POND DEPTH AT ROOF DRAIN: 137mm  
5 YEAR POND DEPTH AT ROOF DRAIN: 104mm

INSTALL A MINIMUM OF 2 SCUPPERS, EACH A MINIMUM 370mm WIDE. BOTTOM OF SCUPPERS SHALL BE 150mm ABOVE ROOF DRAINS (REFER TO ARCHITECTURAL FOR EXACT LOCATIONS AND DETAILS). ROOF SHALL BE DESIGNED TO CARRY THE LOAD OF WATER HAVING A 50mm DEPTH AT SCUPPER OR 200mm DEPTH AT ROOF DRAIN (REFER TO STRUCTURAL).



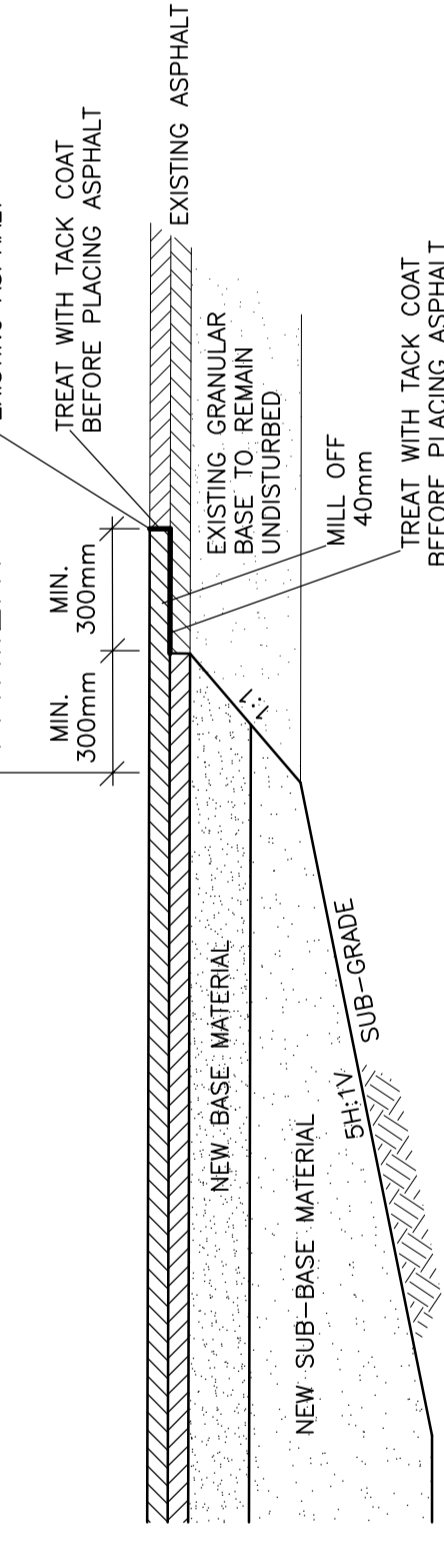
100 YEAR POND DEPTH AT ROOF DRAIN: 126mm  
5 YEAR POND DEPTH AT ROOF DRAIN: 94mm  
100 YEAR POND DEPTH AT ROOF DRAIN: 126mm  
5 YEAR POND DEPTH AT ROOF DRAIN: 94mm

INSTALL A MINIMUM OF 4 SCUPPERS, EACH A MINIMUM 370mm WIDE. BOTTOM OF SCUPPERS SHALL BE 150mm ABOVE ROOF DRAINS (REFER TO ARCHITECTURAL FOR EXACT LOCATIONS AND DETAILS). ROOF SHALL BE DESIGNED TO CARRY THE LOAD OF WATER HAVING A 50mm DEPTH AT SCUPPER OR 200mm DEPTH AT ROOF DRAIN (REFER TO STRUCTURAL).



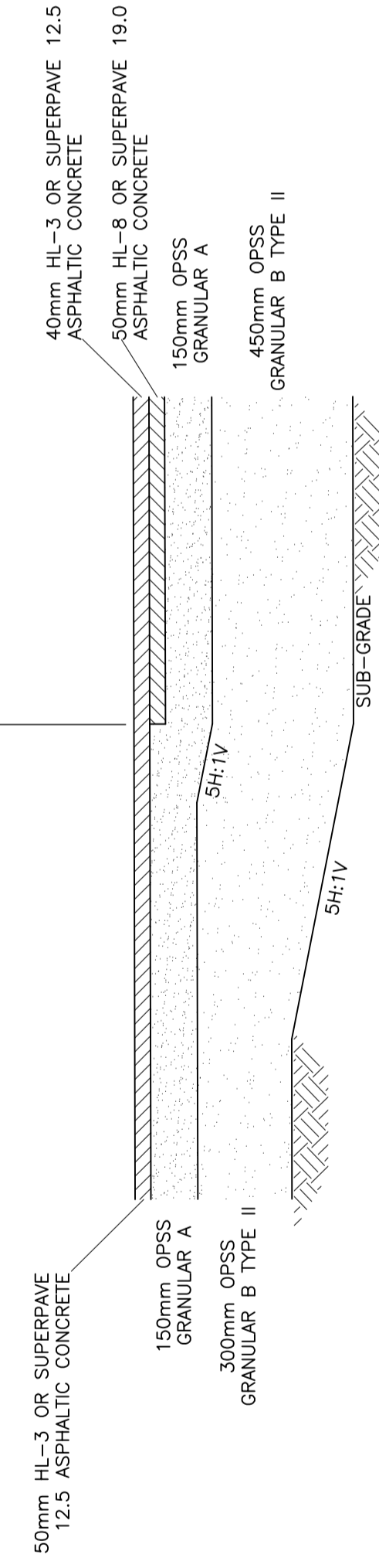
100 YEAR POND DEPTH AT ROOF DRAIN: 137mm  
5 YEAR POND DEPTH AT ROOF DRAIN: 104mm  
100 YEAR POND DEPTH AT ROOF DRAIN: 137mm  
5 YEAR POND DEPTH AT ROOF DRAIN: 104mm

### NEW EXISTING PAVEMENT TRANSITIONS



### PAVEMENT TRANSITIONS N.T.S.

### LIGHT DUTY HEAVY DUTY



### PAVEMENT STRUCTURE N.T.S.

### CATCH-BASIN & MANHOLE SCHEDULE

REF	TOP	SIZE	TYPE	INVERT AT INLET	INVERT AT OUTLET	NOTES
CB/MH-1A	64.16	1200mm	PRE-CAST CONCRETE CATCH-BASIN/MANHOLE	-	62.80	TO OPSD 701.010 & CITY OF OTTAWA STANDARDS - FRAME & COVER TO CITY OF OTTAWA DRAWING No. S25 & S28.1 OR OPSD 401.010
CB/MH-2A	64.15	1200mm	PRE-CAST CONCRETE CATCH-BASIN/MANHOLE	62.70(W)	62.70(N)	TO OPSD 701.010 & CITY OF OTTAWA STANDARDS - FRAME & COVER TO CITY OF OTTAWA DRAWING No. S25 & S28.1 OR OPSD 401.010
CB/MH-3A	64.20	1200mm	PRE-CAST CONCRETE CATCH-BASIN/MANHOLE	62.66(S)	62.66(NE)	TO OPSD 701.010 & CITY OF OTTAWA STANDARDS - FRAME & COVER TO CITY OF OTTAWA DRAWING No. S25 & S28.1 OR OPSD 401.010 INSTALL PLUG STYLE ICD IN OUTLET PIPE 8.41L/s @ 0.50m (±75mm DIA.) ORIFICE LOCATED AT BOTTOM OF PLUG
MH-4A	±64.39	1200mm	PRE-CAST CONCRETE MANHOLE	±62.64(SW) ±62.58(SE)	±62.58(NW)	TO OPSD 701.010 & CITY OF OTTAWA STANDARDS - FRAME & COVER TO CITY OF OTTAWA DRAWING No. S25 & S24.1 OR OPSD 401.010
CB/MH-1B	64.44	1200mm	PRE-CAST CONCRETE CATCH-BASIN/MANHOLE	-	62.90	TO OPSD 701.010 & CITY OF OTTAWA STANDARDS - FRAME & COVER TO CITY OF OTTAWA DRAWING No. S25 & S28.1 OR OPSD 401.010
CB/MH-2B	64.16	1200mm	PRE-CAST CONCRETE CATCH-BASIN/MANHOLE	-	62.91	TO OPSD 701.010 & CITY OF OTTAWA STANDARDS - FRAME & COVER TO CITY OF OTTAWA DRAWING No. S25 & S28.1 OR OPSD 401.010
CB/MH-3B	64.08	1200mm	PRE-CAST CONCRETE CATCH-BASIN/MANHOLE	62.86(N) 62.86(E)	62.86(S)	TO OPSD 701.010 & CITY OF OTTAWA STANDARDS - FRAME & COVER TO CITY OF OTTAWA DRAWING No. S25 & S28.1 OR OPSD 401.010 INSTALL PLUG STYLE ICD IN OUTLET PIPE 6.61L/s @ 0.31m (±75mm DIA.) ORIFICE LOCATED AT BOTTOM OF PLUG
CB-1C	64.04	600 x 600mm	PRE-CAST CONCRETE CATCH-BASIN	-	62.95	TO OPSD 705.010 & CITY OF OTTAWA STANDARDS - FRAME & COVER TO CITY OF OTTAWA DRAWING No. S19.1
CB/MH-2C	64.05	1200mm	PRE-CAST CONCRETE CATCH-BASIN/MANHOLE	62.88(W)	62.88(S)	TO OPSD 701.010 & CITY OF OTTAWA STANDARDS - FRAME & COVER TO CITY OF OTTAWA DRAWING No. S25 & S28.1 OR OPSD 401.010
CB/MH-3C	63.72	1200mm	PRE-CAST CONCRETE CATCH-BASIN/MANHOLE	-	62.92	TO OPSD 701.010 & CITY OF OTTAWA STANDARDS - FRAME & COVER TO CITY OF OTTAWA DRAWING No. S25 & S28.1 OR OPSD 401.010
CB/MH-4C	63.79	1200mm	PRE-CAST CONCRETE CATCH-BASIN/MANHOLE	62.81(N) 62.81(W)	62.81(S)	TO OPSD 701.010 & CITY OF OTTAWA STANDARDS - FRAME & COVER TO CITY OF OTTAWA DRAWING No. S25 & S28.1 OR OPSD 401.010 INSTALL PLUG STYLE ICD IN OUTLET PIPE 4.84L/s @ 0.31m (±75mm DIA.) ORIFICE LOCATED AT BOTTOM OF PLUG
MH-5C	64.00	SOLENO AQUA-SWIRL AS-2 (OGS) HDPE MANHOLE	OIL & GRIT SEPARATOR (OGS) HDPE MANHOLE	62.80(N)	62.80(S)	-

### WATER SERVICE PROFILE TABLE

MATERIAL: 50mm COPPER ASTM B88 TYPE "K" SOFT						
STATION	DESCRIPTION	GRADE ELEVATION	TOP OF PIPE	DEPTH OF COVER	COMMENTS	
A+00.0	T/S CONNECTION TO 200mm MUNICIPAL WATERMAIN AS PER CITY OF OTTAWA DRAWING No. W33	±64.52	±62.42	±2.10	50mm THICK INSULATION AS PER CITY OF OTTAWA DRAWING No. W22	
A+04.0	-	±64.39	±61.99	2.40	GRADE ELEVATION AT BOTTOM OF CURB	
A+12.4	38mm CURB STOP & SERVICE POST TO CITY OF OTTAWA STANDARDS	64.57	62.17	2.40	ON PROPERTY LINE	
A+13.3	-	64.60	62.20	2.40	CROSSING 300 ST INV. 62.76 WS TOP 62.20 - 560mm CLEARANCE (MIN. 500mm REQ'D)	
A+16.9	-	64.70	62.30	2.40	ENTRY INTO BUILDING 'A'	
MATERIAL: 38mm COPPER ASTM B88 TYPE "K" SOFT						
STATION	DESCRIPTION	GRADE ELEVATION	TOP OF PIPE	DEPTH OF COVER	COMMENTS	
B+00.0	T/S CONNECTION TO 200mm MUNICIPAL WATERMAIN AS PER CITY OF OTTAWA DRAWING No. W33	±64.48	±62.38	±2.10	50mm THICK INSULATION AS PER CITY OF OTTAWA DRAWING No. W22	
B+04.1	-	±64.35	±61.95	2.40	GRADE ELEVATION AT BOTTOM OF CURB	
B+12.6	38mm CURB STOP & SERVICE POST TO CITY OF OTTAWA STANDARDS	64.44	62.04	2.40	ON PROPERTY LINE	
B+13.3	-	64.51	62.11	2.40	CROSSING 300 ST INV. 62.89 WS TOP 62.11 - 780mm CLEARANCE (MIN. 500mm REQ'D)	
B+17.1	-	64.57	62.17	2.40	ENTRY INTO BUILDING 'B'	
MATERIAL: 50mm COPPER ASTM B88 TYPE "K" SOFT						
STATION	DESCRIPTION	GRADE ELEVATION	TOP OF PIPE	DEPTH OF COVER	COMMENTS	
C+00.0	T/S CONNECTION TO 200mm MUNICIPAL WATERMAIN AS PER CITY OF OTTAWA DRAWING No. W33	±64.31	±62.21	±2.10	50mm THICK INSULATION AS PER CITY OF OTTAWA DRAWING No. W22	
C+03.6	-	±64.30	±61.90	2.40	GRADE ELEVATION AT BOTTOM OF CURB	
C+12.3	38mm CURB STOP & SERVICE POST TO CITY OF OTTAWA STANDARDS	64.33	61.93	2.40	ON PROPERTY LINE	
C+15.1	-	64.41	62.01	2.40	CROSSING 300 ST INV. 62.85 WS TOP 62.01 - 840mm CLEARANCE (MIN. 500mm REQ'D)	
C+18.5	-	64.51	62.11	2.40	ENTRY INTO BUILDING 'C'	

### KEY PLAN



No.	DATE	REVISION
1	JUL 28-20	PRELIMINARY
2	AUG 26-20	ISSUED FOR COORDINATION
3	SEP 2-20	ISSUED FOR APPROVAL

**D. B. GRAY ENGINEERING INC.**  
 700 Long Point Circle  
 Ottawa, Ontario  
 416-425-8044  
 613-425-8044  
 dgray@dbgrayengineering.com

Project  
**SHERBOURNE DEVELOPMENT**  
**455-483 SHERBOURNE AVE**  
 OTTAWA, ONTARIO

### DETAILS & SCHEDULES

Engineer's Seal  
 D.B. GRAY  
 700 LONG POINT CIRCLE  
 OTTAWA, ONTARIO  
 SEP 2-2020  
 LIC 16505  
 P. ENG. (CIVIL)  
 NOT VALID UNLESS SIGNED & DATED

Drawn: D.B.G.  
 Hdr. Scale: -  
 Date: JUL 28-20  
 Job No.: 20043

Drawing No. **C-7**  
 of **8**