

LOTS 12, 13, 14, 15, 16 AND PART OF LOT 17 (North Slater Street) AND LOTS 14 & 15 (South Albert Street) REGISTERED PLAN 3922 CITY OF OTTAWA

Scale 1:200  
Metric  
DISTANCES SHOWN ON THIS PLAN ARE IN METRES AND CAN BE CONVERTED TO FEET BY DIVIDING BY 0.3048

Surveyor's Certificate  
I CERTIFY THAT:  
1. This survey and plan are correct and in accordance with the Surveyors Act, the Land Titles Act and the regulations made under them.  
2. The survey was completed on the 28th day of March, 2014.

Edward M. Lancaster  
Ontario Land Surveyor

Notes & Legend

Legend table listing symbols for Survey Monument Found, Standard Iron Bar, Iron Bar, Cut Cross, Concrete Pin, Witness, Measured, Annis, O'Sullivan, Vollebek Ltd., (AOG) Plan dated March 31, 2011, (AOG) Plan dated 1993 (Topo), Plan 4R-25778, Plan 4R-10209, Plan D-52, Maintenance Hole (Storm Sewer), Maintenance Hole (Sanitary), Maintenance Hole (Bell), Maintenance Hole (Traffic), Maintenance Hole (Hydro), Maintenance Hole (Gas), Valve Chamber (Watermain), Undergound Storm Sewer, Undergound Sanitary Sewer, Undergound Water, Undergound Power, Undergound Gas, Utility Pole, Light Standard, Catch Basin, Fire Hydrant, Water Valve, Water Stand Post, Gas Valve, Gas Meter, Traffic Signal Post, Deciduous Tree, Bollard, Sign, Chain Link Fence, Board Fence, Post and Wire, Wood Retaining Wall, Concrete Retaining Wall, Overhead Wires, Diameter, Location of Elevations, Top of Concrete Curb Elevation, Centreline, Property Line.

NOTE #1: The location of all Sight Triangles and Street Widening are Preliminary and must be approved by The City of Ottawa before any design work is undertaken.

SITE AREA: 0.4920 HECTARES

Topographic data was collected under Winter Conditions. Snow cover and ice preclude determining location and elevation of some topographical data that is otherwise visible.

ELEVATION NOTES

1. Elevations shown are geodetic and are referred to the CGVD28 geodetic datum.  
2. It is the responsibility of the user of this information to verify that the job benchmark has not been altered or disturbed and that it's relative elevation and description agrees with the information shown on this drawing.

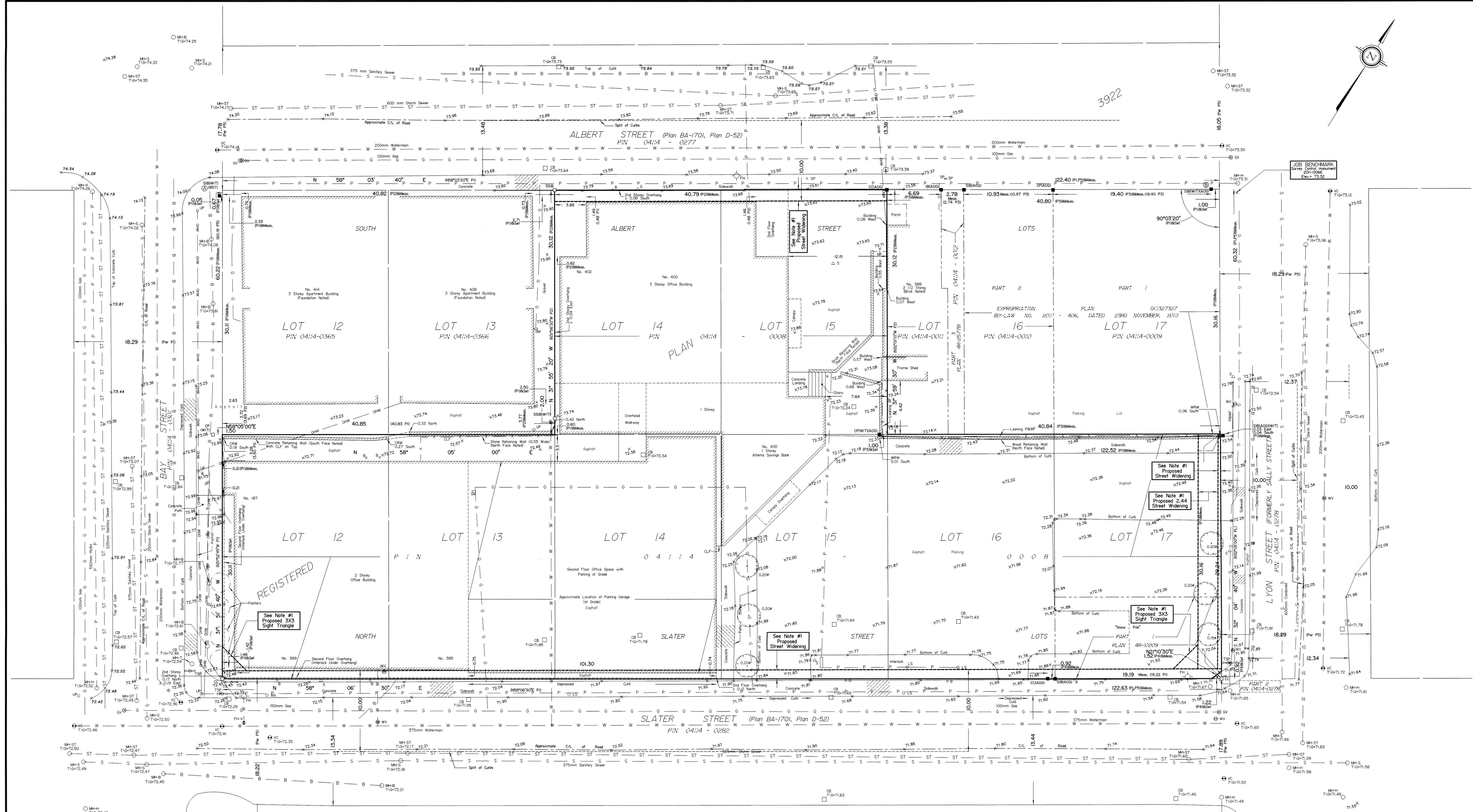
UTILITY NOTES

1. This drawing cannot be accepted as acknowledging all of the utilities and it will be the responsibility of the user to contact the respective utility authorities for confirmation.  
2. Only visible surface utilities were located.  
3. A field location of underground plant by the pertinent utility authority is mandatory before any work involving breaking ground, probing, excavating etc.  
4. Undergound Utilities shown on this plan are compiled from the City of Ottawa Plans D-11-18, D-11-19, D-11-24 & H-36-F.

Coordinate values are to urban accuracy in accordance with O. Reg. 216/10.

Point A Northing 5031142.75 Easting 366956.47  
Point B Northing 5031207.57 Easting 367059.18

Caution: Coordinates cannot, in themselves, be used to re-establish corners or boundaries shown on this plan.



ALBERT STREET (Plan BA-1701, Plan D-52) PIN 041/4 - 0277  
SLATER STREET (Plan BA-1701, Plan D-52) PIN 041/4 - 0282  
LOT 12 PIN 041/4-0365  
LOT 13 PIN 041/4-0366  
LOT 14 PIN 041/4-0367  
LOT 15 PIN 041/4-0368  
LOT 16 PIN 041/4-0010  
LOT 17 PIN 041/4-0009  
PLAN 041/4  
REGISTERED  
See Note #1 Proposed 3X3 Sight Triangle  
See Note #1 Proposed Street Widening  
See Note #1 Proposed 2.44 Street Widening  
See Note #1 Proposed 3X3 Sight Triangle