

METRIC
DISTANCES AND COORDINATES SHOWN ON THIS PLAN ARE IN METRES AND CAN BE CONVERTED TO FEET BY DIVIDING BY 0.3048

SCHEDULE			
PART	LOT	REG'D PLAN	PIN
1	ALL OF 17 (South Side of Albert Street)	3922	ALL OF 04114-0009
2	PART OF 16		ALL OF 04114-0010
3	(South Side of Albert Street)		ALL OF 04114-0012

PART 3 - SUBJECT TO EASEMENT PER INST. CR520019 & INST. CR492685

I REQUIRE THIS PLAN TO BE DEPOSITED UNDER THE LAND TITLES ACT.

PLAN 4R-25798

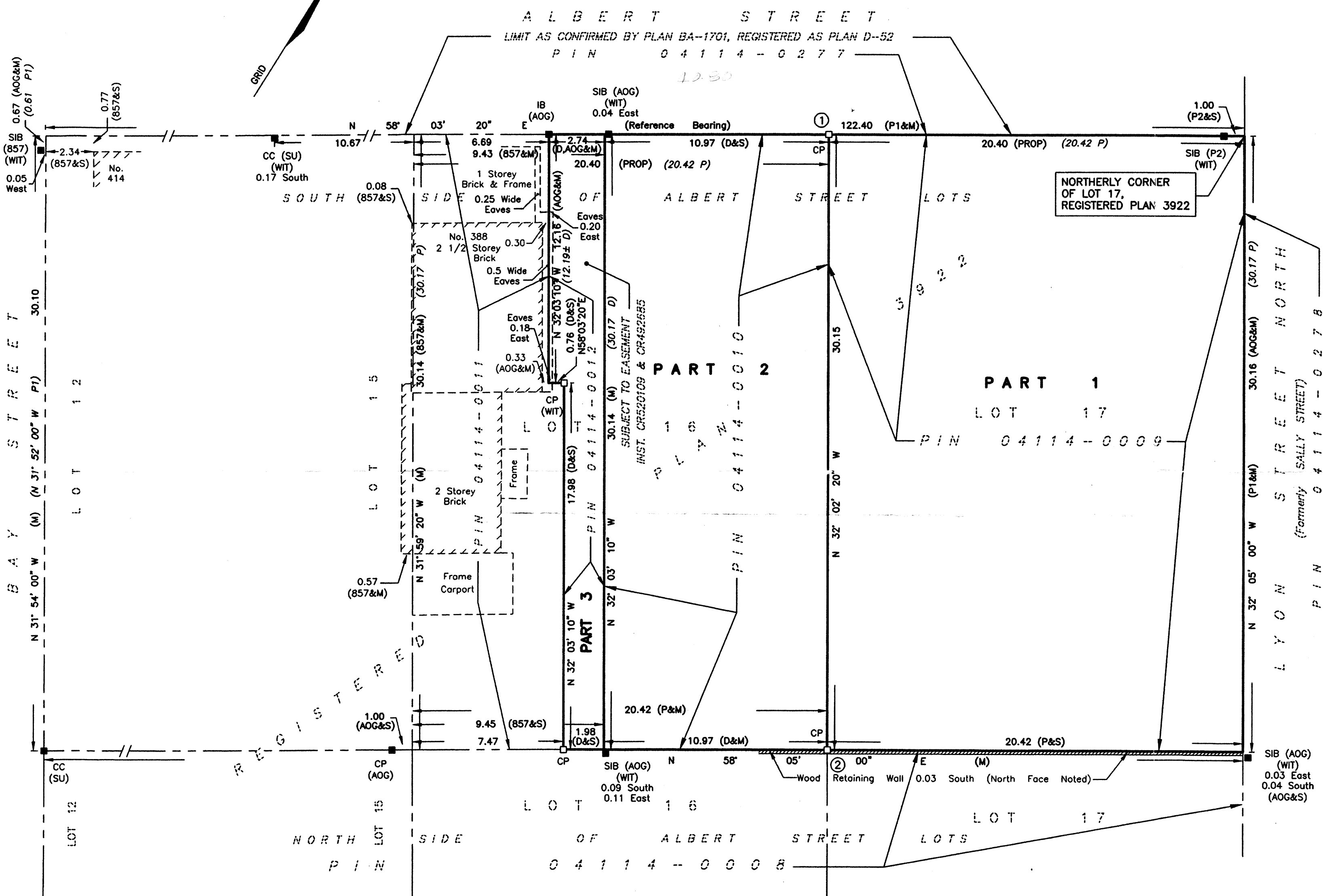
RECEIVED AND DEPOSITED

DATE NOV. 25, 2011

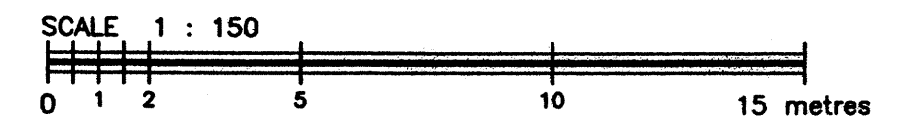
DATE Nov 25, 2011

DAVID W. WOODLAND, O.L.S.

LAND REGISTRAR FOR THE LAND TITLES DIVISION OF OTTAWA - CARLETON (N° 4)



PLAN OF SURVEY OF
LOT 17 & PART OF LOT 16
(SOUTH SIDE OF ALBERT STREET)
REGISTERED PLAN 3922
CITY OF OTTAWA



FAIRHALL, MOFFATT & WOODLAND LIMITED
ONTARIO LAND SURVEYORS

NOTES

- BEARINGS ARE GRID, DERIVED FROM THE SOUTHERLY LIMIT OF ALBERT STREET SHOWN ON PLAN D-52 AS HAVING A BEARING OF N 58° 03' 20" E AND ARE REFERRED TO THE CENTRAL MERIDIAN, 76°30'W LONGITUDE 3° MTM ZONE 9, (NAD83 ORIGINAL).
- DISTANCES ARE GROUND AND CAN BE CONVERTED TO GRID BY MULTIPLYING BY THE COMBINED SCALE FACTOR 0.99941.
- PPD H05 & PPD H06 REFER TO THIRD ORDER HORIZONTAL CONTROL MONUMENTS BY WEBSTER & SIMMONDS SURVEYING LTD., O.L.S. ESTABLISHED 1998.

LEGEND

- - SURVEY MONUMENT SET (SU) - SOURCE UNKNOWN
- - SURVEY MONUMENT FOUND (WIT) - WITNESS
- SIB - STANDARD IRON BAR PIN - PROPERTY IDENTIFIER NUMBER
- IB - IRON BAR
- CP - CONCRETE PIN
- CC - CUT CROSS
- (P) - REGISTERED PLAN 3922
- (P1) - PLAN BA-1701 (PLAN D-52)
- (P2) - PLAN 4R-10209
- (PROP) - PROPORTIONED
- (D) - INST. NS125216
- (S) - SET
- (M) - MEASURED
- (857) - FAIRHALL, MOFFATT & WOODLAND LIMITED, O.L.S. (REF. 336-3922, 412-3922 & 425-3922)
- (AOG) - ANNIS, O'SULLIVAN, VOLLEBEK LTD., O.L.S. (REF. 3922-62, JOB 11382-11)

SURVEYOR'S CERTIFICATE

- I CERTIFY THAT:
- THIS SURVEY AND PLAN ARE CORRECT AND IN ACCORDANCE WITH THE SURVEYS ACT, THE SURVEYORS ACT, THE LAND TITLES ACT AND THE REGULATIONS MADE UNDER THEM.
 - THE SURVEY WAS COMPLETED ON OCTOBER 14, 2011.

NOV. 25, 2011
DATE

DAVID W. WOODLAND
ONTARIO LAND SURVEYOR

COORDINATES WERE DERIVED FROM THIRD ORDER HORIZONTAL CONTROL MONUMENTS PPD H05 & PPD H04 MTM ZONE 9, NAD83 ORIGINAL.

COORDINATES HAVE BEEN DETERMINED TO AN URBAN ACCURACY IN ACCORDANCE WITH SECTION 14(2) OF O.REG 216/10.

POINT ID	NORTHING	EASTING
PPD H05	5031521.554	367109.315
PPD H04	5031438.192	366959.362
1	5031197.269	367042.729
2	5031171.712	367058.719

COORDINATES CANNOT IN THEMSELVES BE USED TO RE-ESTABLISH CORNERS OR BOUNDARIES SHOWN ON THIS PLAN.

CITY OF OTTAWA
SURVEYS & MAPPING FILE: 15846

	JOB No. P 3 9 1 0 0
	E 367051, N 5031186
Surveying and Land Information Services 100-600 TERRY FOX DRIVE, KANATA, ONTARIO K2L 4B6 TEL: (613) 591-2580 FAX: (613) 591-1495 www.fmw.on.ca	REFERENCE No. 546 - 3922 S:\J085\P39100\DWG5 2011-11-25 RP391P.DWG (nj)