

GENERAL NOTES

- 1. ALL WORKS AND MATERIALS SHALL CONFORM TO THE LATEST REVISION OF THE STANDARDS AND SPECIFICATIONS FOR THE CITY OF OTTAWA, ONTARIO PROVINCIAL STANDARD DRAWINGS (OPSD) AND SPECIFICATIONS (OPSS), WHERE APPLICABLE. LOCAL UTILITY STANDARDS AND MINISTRY OF TRANSPORTATION STANDARD DRAWINGS WILL APPLY WHERE REQUIRED.

WATERMAIN NOTES

- 1. ALL WATERMAIN INSTALLATION SHALL CONFORM TO THE LATEST REVISIONS OF THE CITY OF OTTAWA AND THE ONTARIO PROVINCIAL STANDARD DRAWINGS (OPSD) AND SPECIFICATIONS (OPSS).

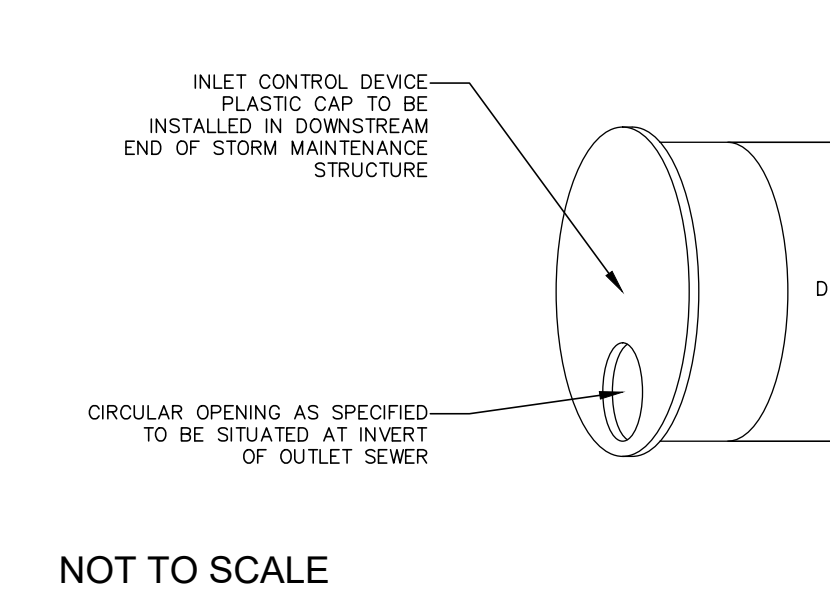
SANITARY AND STORM SEWER NOTES

- 1. LASER ALIGNMENT CONTROL TO BE UTILIZED ON ALL SEWER INSTALLATIONS.

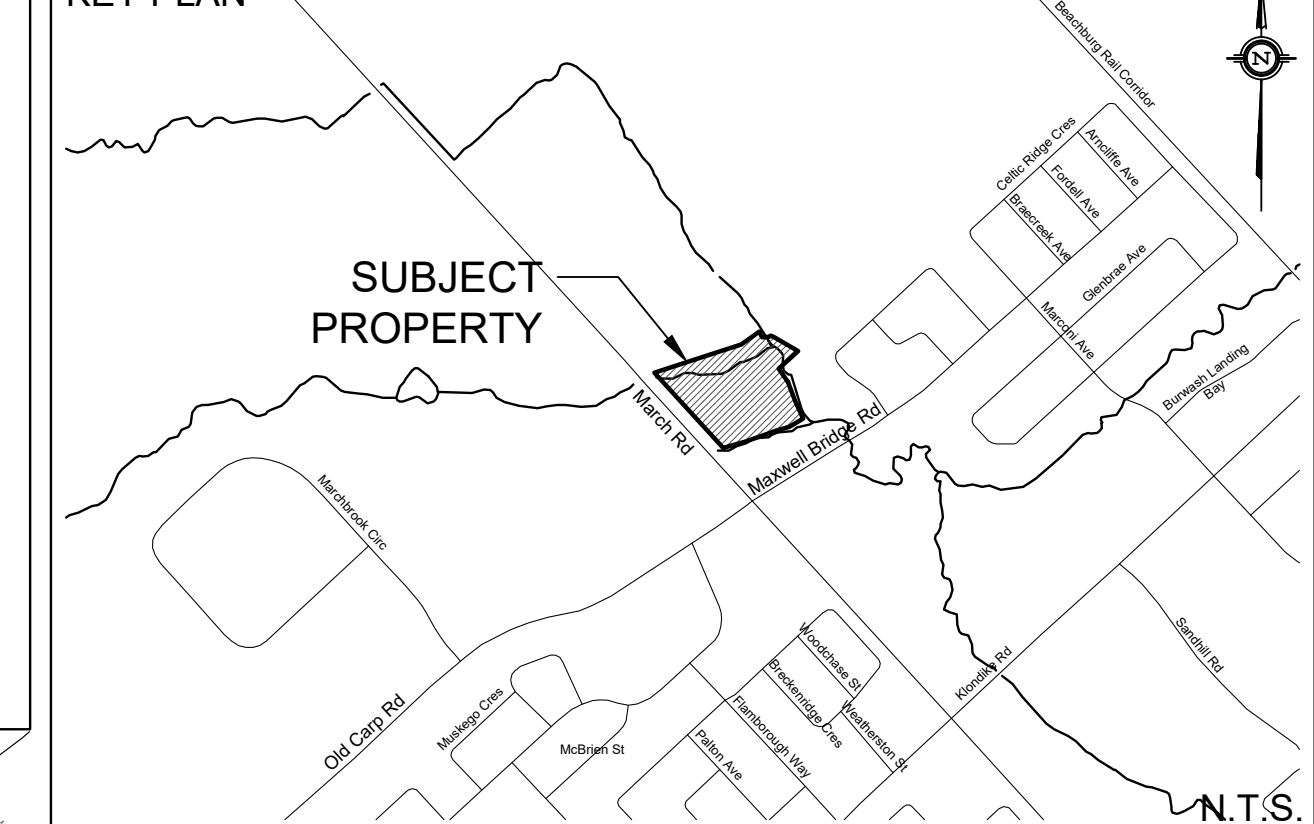
- 1. ALL SANITARY SEWER INSTALLATION SHALL CONFORM TO THE LATEST REVISIONS OF THE CITY OF OTTAWA AND THE ONTARIO PROVINCIAL STANDARD DRAWINGS (OPSD) AND SPECIFICATIONS (OPSS).

- 17. ALL REINFORCED CONCRETE STORM SEWER PIPE SHALL BE IN ACCORDANCE WITH CSA A257.2, OR LATEST AMENDMENT. ALL NON-REINFORCED CONCRETE STORM SEWER PIPE SHALL BE IN ACCORDANCE WITH CSA A257.1, OR LATEST AMENDMENT.

INLET CONTROL DEVICE (ICD) DETAIL



KEY PLAN



LEGEND

- PROPERTY LINE
PROPOSED WATERMAIN
PROPOSED SANITARY SEWER
PROPOSED STORM SEWER
PROPOSED PERFORATED SUBDRAIN

EXISTING UNDERGROUND SERVICES AND UTILITY LOCATIONS DERIVED FROM THE BEST AVAILABLE DATA. AS-CONSTRUCTED DRAWINGS, UTILITY DRAWINGS AND INFRASTRUCTURE MAPPING PROVIDED BY THE CITY OF OTTAWA.

CONTRACTOR TO CONFIRM ELEVATIONS AND LOCATIONS OF EXISTING UNDERGROUND SERVICES AND UTILITIES WITHIN THE RIGHT OF WAY PRIOR TO INSTALLATION OF SITE SERVICING INFRASTRUCTURE.

THE CONTRACTOR SHALL IMPLEMENT BEST MANAGEMENT PRACTICES, TO PROVIDE FOR PROTECTION OF THE AREA DRAINAGE SYSTEM AND THE RECEIVING WATERCOURSE, DURING CONSTRUCTION ACTIVITIES.

NOT FOR CONSTRUCTION

TOPOGRAPHIC INFORMATION
TOPOGRAPHIC INFORMATION PROVIDED BY STATICE GEOMATICS LTD.
PROJ. NO. 161613685-111
DATED JULY 10, 2017

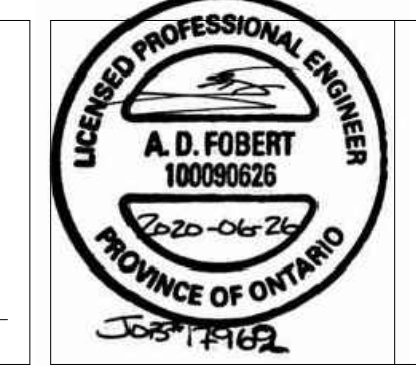
SITE PLAN INFORMATION
SITE PLAN PROVIDED BY GREYSTONE
PROJ. NO. 17300
DATED JUNE 26, 2020

GEOTECHNICAL STUDY
GEOTECHNICAL RECOMMENDATIONS PROVIDED BY PATERSON GROUP
PROJ. NO. PG5119-1
DATED NOVEMBER 13, 2019

SITE SERVICING AND STORMWATER MANAGEMENT STUDY
SERVICING AND STORMWATER MANAGEMENT RECOMMENDATIONS PROVIDED BY DSEL
PROJ. NO. 17-962
DATED JUNE 2020

BENCH MARK
TOP OF SPINDLE OF FIRE HYDRANT LOCATED AT MARCH ROAD AND MAXWELL BRIDGE ROAD INTERSECTION
ELEV=79.35

Table with 3 columns: No., BY, DESCRIPTION. Row 1: 1 B.N.C. 20.06.26 ISSUED FOR MUNICIPAL REVIEW.



PROJECT No. 17-962 REVIEWED BY

SITE SERVICING PLAN 910 MARCH ROAD

WEXFORD COMMERCIAL DEVELOPMENTS LTD. 6 Malabar Court Hamilton, Ontario, L9C 2B9 Tel. (289) 680-7711



DRAWN BY: B.N.C. CHECKED BY: A.D.F. DRAWING NO. SHEET NO.
DESIGNED BY: B.N.C. CHECKED BY: A.D.F.
SCALE: 1:500 DATE: JUNE 2020 SSP-1 3 of 4