

TOPOGRAPHIC SKETCH OF
LOT 6
REGISTERED PLAN 4M-615 AND
PART OF LOT 27
CONCESSION "A" (RIDEAU FRONT)
GEOGRAPHIC TOWNSHIP OF NEPEAN
CITY OF OTTAWA

FARLEY SMITH & DENIS SURVEYING LTD.
 2012

SCALE = 1: 500



METRIC NOTE

DISTANCES SHOWN ON THIS PLAN ARE IN METRES AND CAN BE CONVERTED TO FEET BY DIVIDING BY 0.3048.

BEARING NOTE

BEARINGS ARE ASTROMIC AND ARE REFERRED TO THE WESTERLY LIMIT OF TRISTAN COURT AS SHOWN ON REGISTERED PLAN 4M-615 HAVING A BEARING OF N32°15'30"W.

ELEVATION NOTE

- ELEVATIONS ARE GEODETIC AND ARE DERIVED FROM NCC CONTROL MONUMENT N° 019710637 HAVING AN ELEVATION OF 89.26 METRES.
- IT IS THE RESPONSIBILITY OF THE USER OF THIS INFORMATION TO VERIFY THAT THE JOB BENCHMARK HAS NOT BEEN ALTERED OR DISTURBED AND THAT ITS' RELATIVE ELEVATION AND DESCRIPTION AGREES WITH THE INFORMATION SHOWN ON THIS DRAWING.

I hereby certify this to be correct.

DATE JULY 25, 2012

RONALD A. DENIS
 ONTARIO LAND SURVEYOR

LEGEND

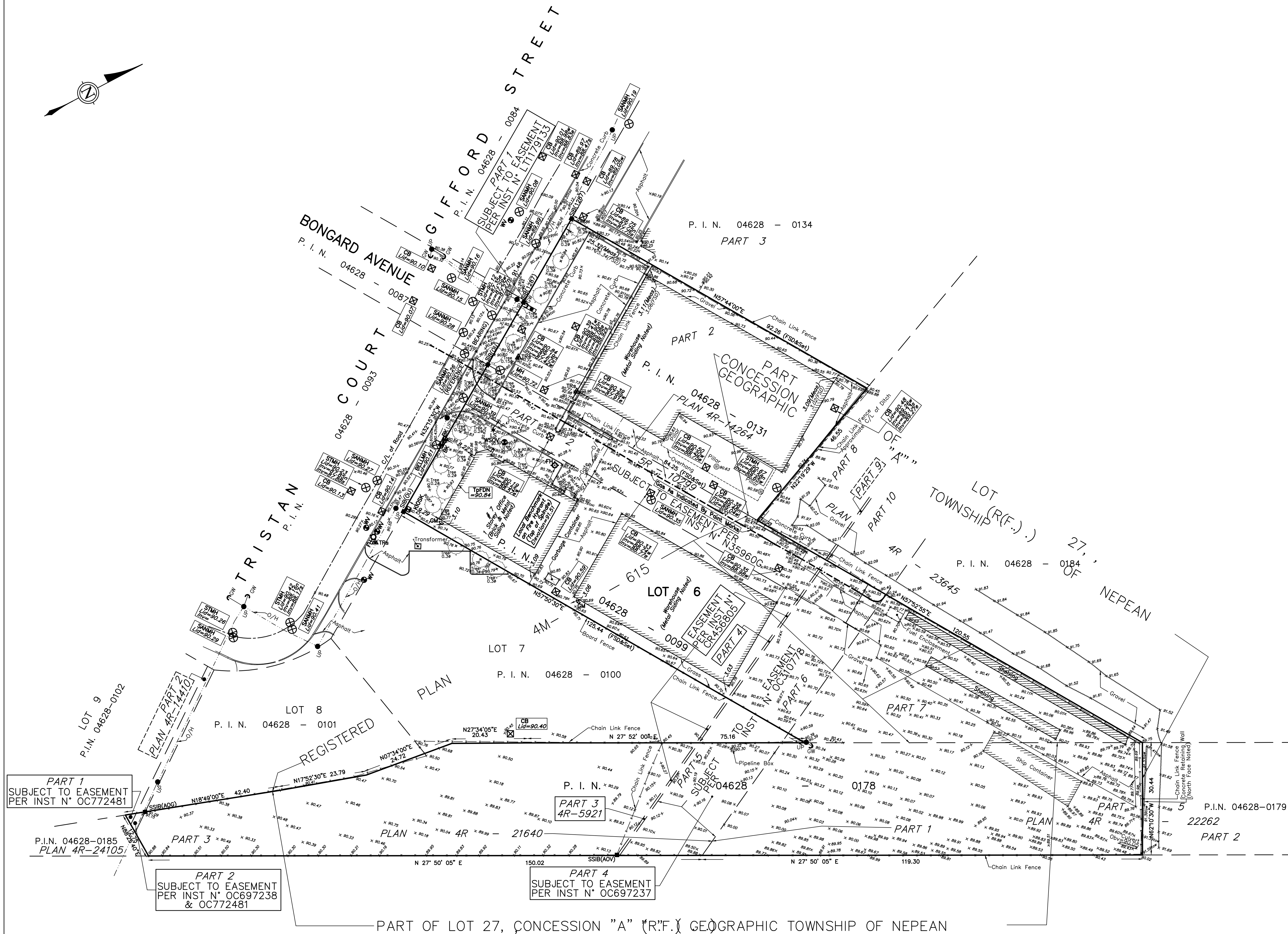
- SURVEY MONUMENT FOUND
- SURVEY MONUMENT SET
- SSIB STANDARD IRON BAR
- SSIS SHORT STANDARD IRON BAR
- IB IRON BAR
- x-x-x FENCE
- OU ORIGIN UNKNOWN
- Meas MEASURED
- 1287/1692/FSD FARLEY, SMITH & DENIS SURVEYING LTD. OCT. 19, 2001
- AOV ANNIS, O'SULLIVAN & VOLLEBEKK LTD.

NOTE:

UNLESS OTHERWISE SHOWN MONUMENTS, BEARING & DISTANCES PER 4R-21640 & 4R-22262

ADDITIONAL INFORMATION

- CB CATCH BASIN
- FH FIRE HYDRANT
- GV GAS VALVE
- WV WATER VALVE
- GM GAS METER
- LS LIGHT STANDARD
- UP UTILITY POLE
- GW GUY WIRE
- BK BELL KIOSK
- SANMH SANITARY SEWER MANHOLE
- STMH STORM SEWER MANHOLE
- Tra TRAFFIC/PEDESTRIAN SIGN
- O/H OVERHEAD WIRES
- U/G UNDERGROUND
- Dep.Curb DEPRESSED CURB
- toc TOP OF CURB ELEVATION
- tow TOP OF WALL ELEVATION
- ELV ELEVATION
- Inv INVERT ELEVATION
- Obv OBVERT ELEVATION
- CONC. CONCRETE
- Ø DIAMETER
- TpFDN TOP OF FOUNDATION ELEVATION
- F.F. FINISHED FLOOR ELEVATION
- N/A NOT APPLICABLE/NOT ACCESSIBLE
- C/L CENTRELINE
- BELL SERVICE
- STORM SERVICE
- SANITARY SERVICE
- WATER SERVICE
- GAS SERVICE
- TRAFFIC/HYDRO



PART OF LOT 27, CONCESSION "A" (R.F.) GEOGRAPHIC TOWNSHIP OF NEPEAN

CANADIAN NATIONAL RAILWAY
 P.I.N. 04628 - 0186

FARLEY, SMITH & DENIS SURVEYING LTD.

ONTARIO LAND SURVEYORS
 CANADA LANDS SURVEYORS