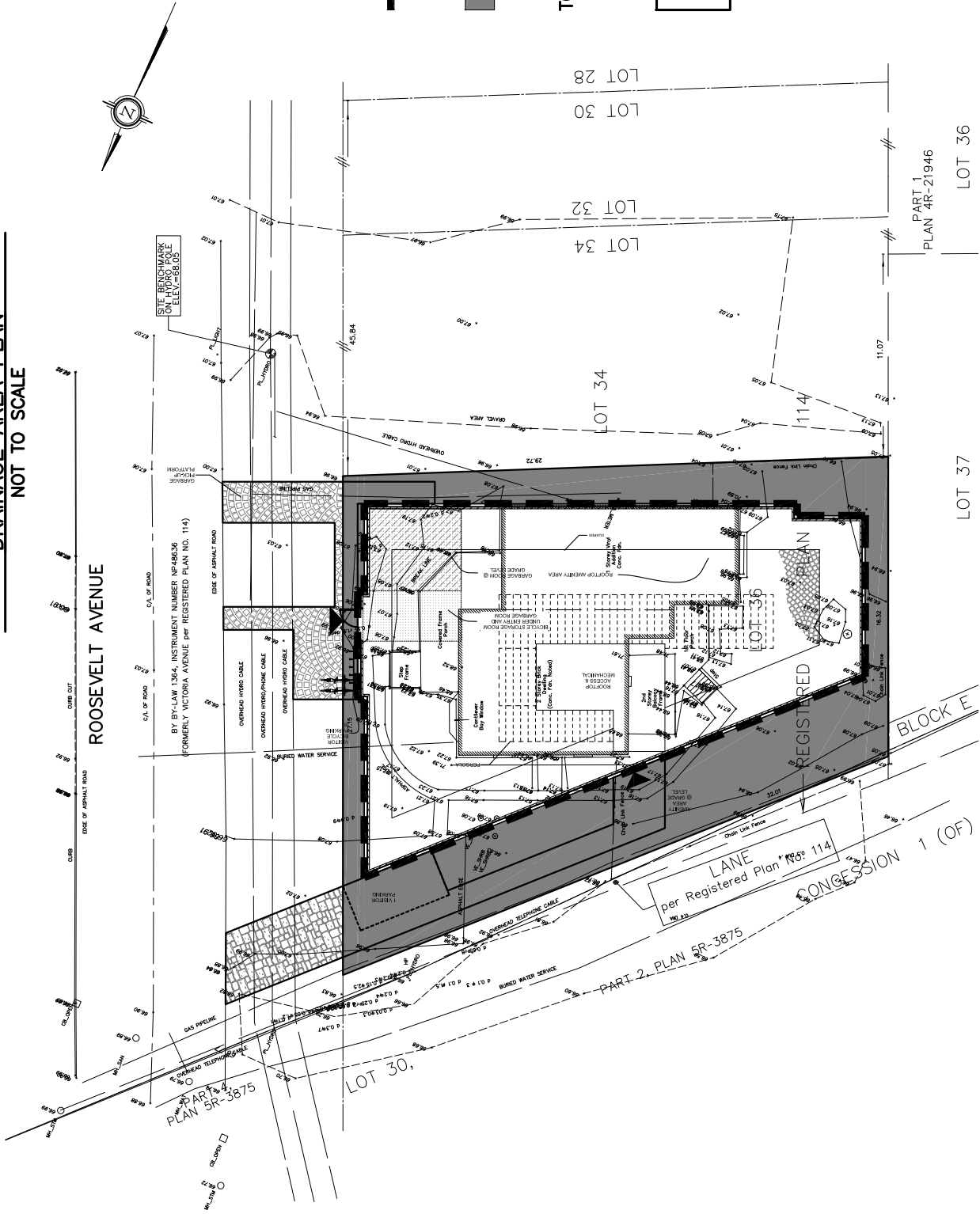


**PROPOSED 342 ROOSEVELT AVENUE
SITE DEVELOPMENT
DRAINAGE AREA PLAN
NOT TO SCALE**



LEGEND

— — — — —
**LIMIT OF CONTROLLED
 STORM DRAINAGE AREA
 =405.20 SQ. M**

■ ■ ■ ■ ■
**UNCONTROLLED
 STORM DRAINAGE AREA
 =240.5 SQ. M**

TOTAL AREA = 645.7 SQ. M

**POST-DEVELOPMENT SITE
 AVERAGE "C" = 0.70**

FIGURE 1