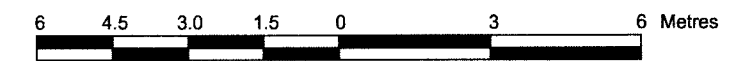


**LOT 13 AND PART OF LOT 14**  
**(East Side of Henderson Avenue)**  
**REGISTERED PLAN 37221**  
**CITY OF OTTAWA**

Surveyed by Annis, O'Sullivan, Vollebek Ltd.  
 Scale 1 : 150



**Metric**  
 DISTANCES SHOWN ON THIS PLAN ARE IN METRES AND CAN BE CONVERTED TO FEET BY DIVIDING BY 0.3048

**Surveyor's Certificate**

- I CERTIFY THAT:
- This survey and plan are correct and in accordance with the Surveys Act, the Surveyors Act and the Land Titles Act and the regulations made under them.
  - The survey was completed on the 9th day of August, 2017.

August 25/17  
 Date  
 V. Andrey Shelp  
 Ontario Land Surveyor

**PART 2**  
 THIS PLAN MUST BE READ IN CONJUNCTION WITH SURVEY REPORT DATED: August 25, 2017

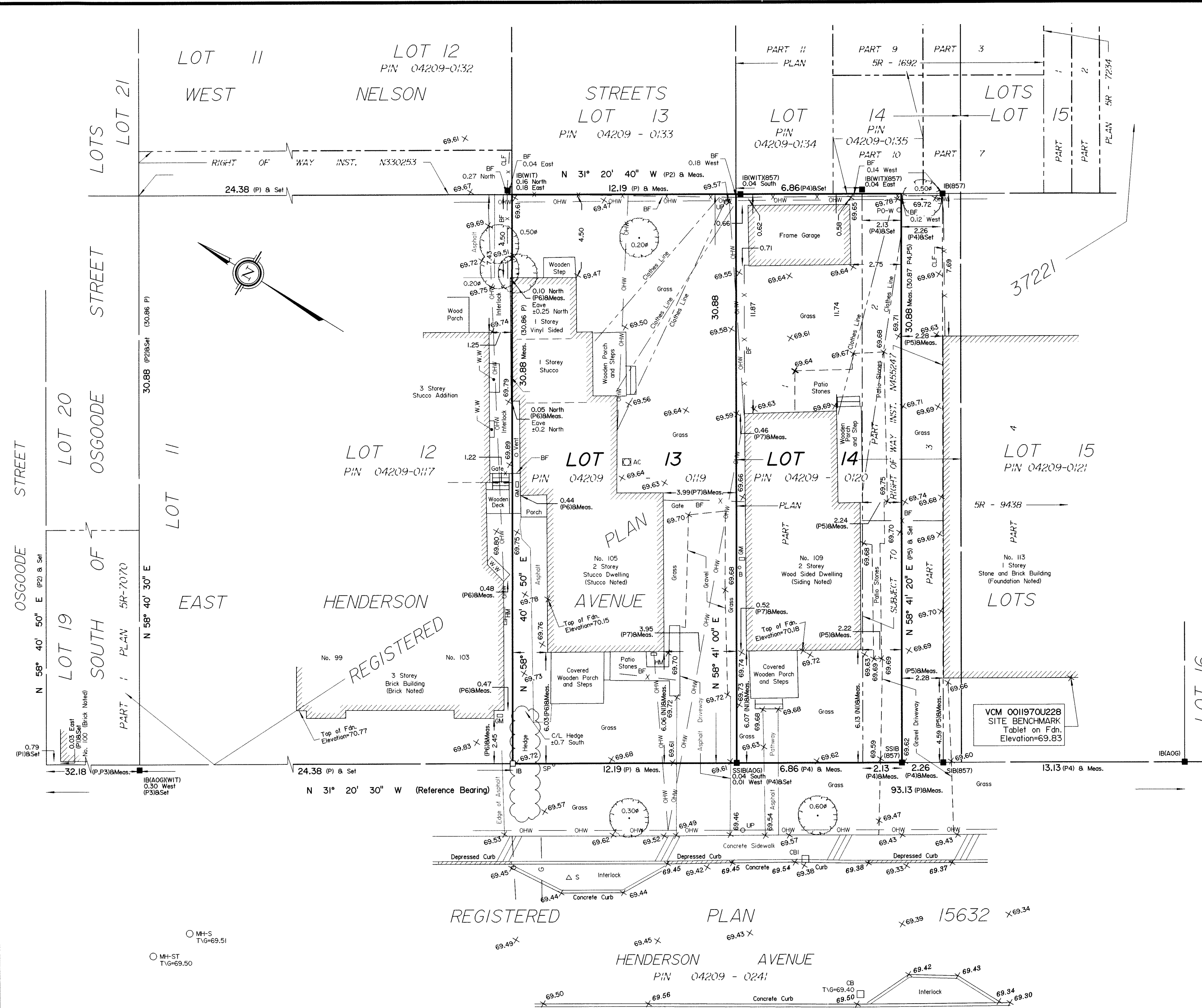
ANNIS, O'SULLIVAN, VOLLEBEK LTD. grants to T.C. United ("The Client"), their solicitors, mortgagees, and other related parties, permission to use original, signed, sealed copies of the Surveyor's Real Property Report in transactions involving The Client.

**Notes & Legend**

Denotes	
□	Survey Monument Planted
■	Survey Monument Found
SIB	Standard Iron Bar
SSIB	Short Standard Iron Bar
IB	Iron Bar
(WIT)	Witness
Meas.	Measured
(AOG)	Annis, O'Sullivan, Vollebek Ltd.
(P)	Registered Plan 37221
(P1)	(1319) Plan dated March 17, 1987
(P2)	(AOG) Plan dated June 11, 2014
(P3)	Plan 5R-7070
(P4)	Plan 5R-9438
(P5)	(AOG) Plan dated August 12, 2012
(P6)	(AOG) Plan dated July 30, 2012
(P7)	(AOG) Plan dated April 7, 1980
(NI)	(AOG) Field Notes dated October 2, 1979
○ MH-ST	Maintenance Hole (Storm Sewer)
○ MH-S	Maintenance Hole (Sanitary)
○ UP	Utility Pole
□ CB	Catch Basin
□ CBI	Catch Basin Inlet
○ SP	Water Stand Post
T/G	Top of Grate
□ HM	Hydro Meter
○	Deciduous Tree
○ B	Bollard
△ S	Sign
W.W	Window Well
BF	Board Fence
○ PO-W	Wood Pole
□ AC	Air Conditioner
□ GM	Gas Meter
∅	Diameter
+ 65.00	Location of Elevations
+ 65.00	Top of Concrete Curb Elevation
C/L	Centreline
Acc.	Accepted
Fdn.	Foundation
VCM	Vertical Control Monument
— OHW	Overhead Wires
— G	Underground Gas

**ASSOCIATION OF ONTARIO LAND SURVEYORS**  
 PLAN SUBMISSION FORM  
 2019977

THIS PLAN IS NOT VALID UNLESS IT IS AN EMBOSSED ORIGINAL COPY ISSUED BY THE SURVEYOR in accordance with Regulation 1026, Section 29 (3).



**ELEVATION NOTES**

- Elevations are geodetic and are referred to the vertical control monument No. 0011970U228 having an elevation of 69.83 (CGVD28 datum).
- It is the responsibility of the user of this information to verify that the job benchmark has not been altered or disturbed and that its relative elevation and description agrees with the information shown on this drawing.

**UTILITY NOTES**

- This drawing cannot be accepted as acknowledging all of the utilities and it will be the responsibility of the user to contact the respective utility authorities for confirmation.
- Only visible surface utilities were located.
- A field location of underground plant by the pertinent utility authority is mandatory before any work involving breaking ground, probing, excavating etc.

Bearings are grid bearings, derived from the easterly limit of Henderson Avenue derived from GPS observations shown to be N31°20'30"W and are referred to the Central Meridian of Zone 9 of the Ontario Coordinate System, Longitude 76°30' West (MTM NAD-83).

© Annis, O'Sullivan, Vollebek Ltd., 2017. "THIS PLAN IS PROTECTED BY COPYRIGHT"

**ANNIS, O'SULLIVAN, VOLLEBEK LTD.**  
 14 Concourse Gate, Suite 500  
 Nepean, Ont. K2E 7S6  
 Phone: (613) 727-0850 / Fax: (613) 727-1079  
 Email: Nepean@aovltd.com

Ontario Land Surveyors Job No. 19674-17 PT LTS 13 14 PL 37221 SRPR D2 A.M.