

GENERAL

- The Tree Management/Preservation Plan is to be read in conjunction with the associated Arborist Report prepared by IBI Group and shall not be utilized as a standalone document.
- All existing trees at property boundaries and on adjacent properties shall be preserved and protected. Where trees which are located at shared property boundaries or on adjacent properties are identified by this plan to sustain injury or require removal, the Owner of the adjacent property's written permission is required prior to any construction or removals works commence.

TREE PROTECTION FENCING

- The Contractor shall install Tree Protection Fencing (TPF) to protect trees identified for preservation.
- All TPF will conform with the detail(s) included on these plans. Where current governing Municipal/City standards differ, contact Project Arborist or Contract Administrator for direction.
- No substitutions of materials, products or quantities will be accepted without the prior written permission of the Project Arborist.
- Upon installation of the TPF, the Contractor shall contact the Project Arborist to review and approve the fencing and location(s) in writing prior to commencement of any site work.
- The TPF shall remain in the approved locations throughout the duration of the site works and shall not be moved at any time to accommodate construction or site work.
- The Contractor shall inspect TPF weekly and maintain as required through all stages of development/construction. The TPF shall be removed at the completion of all site works and disturbed areas shall be restored to original condition.

TREE PRESERVATION

- The Tree Protection Zone (TPZ) is protected and delineated by the TPF. The Contractor is not to proceed in uncertainty.
- Any potential or incurred injury/damage to adjacent trees(s) identified to be preserved shall be immediately reported to the Project Arborist and reviewed on site. Injury/damage includes any required arboricultural treatment including but not limited to: limb pruning, trunk damage, root exposure or required cutting/removal or any other activity that has the potential to harm the tree.
- The TPZ is not to be used for any type of storage including materials, equipment or stockpiles.
- No trenching or tunneling for underground services shall occur within the TPZ.
- Any equipment use within the TPZ will be restricted throughout all stages of development. This applies to TPZs within or outside of the project limit line.
- Absolutely no alteration of grades or construction activity is permitted within the TPF and TPZ. Absolutely no flushing of contaminant shall be permitted towards or within the TPZ.
- When working adjacent to trees to be preserved site preparation measures such as pruning for overhead clearance may be required. Preparatory pruning shall only be performed when completed by or under the direct supervision of an ISA Certified Arborist (or approved qualified person as approved by the Project Arborist).
- All pruning work shall be performed by a qualified individual and shall be in accordance with current horticultural practices including but not limited to:
 - Pruning cuts shall be made just beyond the branch collar and should be limited to thinning cuts. Heading cuts will only be accepted in specific cases as directed by an arborist and should be avoided where possible.
 - Pruning of all stems greater than 50 mm in diameter should be made with a three-cut method to avoid tearing living bark tissue.
 - No wound dressings shall be applied.
- Where soil excavation/grading work is required within the rooting zone of a tree to be preserved (the rooting zone often extends beyond the identified TPZ and can be 3 times the dripline radius or more):
 - Roots shall be cleanly severed before stripping and removing soil to avoid damage to the tree and the root system. Roots to be cut using appropriate equipment (i.e. trencher adapted to this specific use/chainsaw/root pruning machine). Roots may be severed using the clean edge of a straight excavator bucket under supervision of an ISA Certified Arborist.
 - No attempts to cut existing roots with the digging bucket of any heavy machinery will be permitted as it can cause the roots to tear and pull and be harmful to root regeneration and recovery.
 - Any exposed roots of a tree to be preserved with a diameter greater than 2.5cm (1 inch) shall be pruned back to the soil face.
 - An excavation area within the TPZ shall be backfilled immediately and/or roots shall be kept constantly moist with burlap covered with white plastic and checked a minimum of 2 times a day, for a maximum of 48 hours. If roots are to be exposed for a period greater than 48 hours, the exposed area shall be covered with a minimum of 150 mm (6 inches) of mulch and maintained in a moist condition during construction until the area can be properly backfilled.
- Trees shall not have any rigging cables, fencing, signage or hardware of any sort attached or wrapped around them.
- No contaminants or toxic materials shall be dumped or flushed where they may come into contact with the feeder roots of trees to be preserved.
- The Contractor will be held responsible for all avoidable damage to preserved trees during all stages of construction.
- Watering or other maintenance of trees to be preserved may be required if construction activities are observed to be causing stress or impacting health as determined by the Project Arborist.

TREE REMOVALS

- Prior to the commencement of tree removals, all trees designated for removal must be clearly identified in the field.
- Where possible, removals, chipping, and/or brush removal is to be completed outside the window of April 1 to August 31. This window accounts for active bird nesting and bat maternity roosting periods. Where removals must occur within the restricted activity window, nest and roosting habitat assessments to protect species protected under the Migratory Birds Convention Act, 1994 and Endangered Species Act, 2007. These surveys must be completed by a qualified biologist or ornithologist.
- Trees shall always be felled away from adjacent preserved trees to prevent avoidable damage to the crowns and stems

TREE INVENTORY TABLE

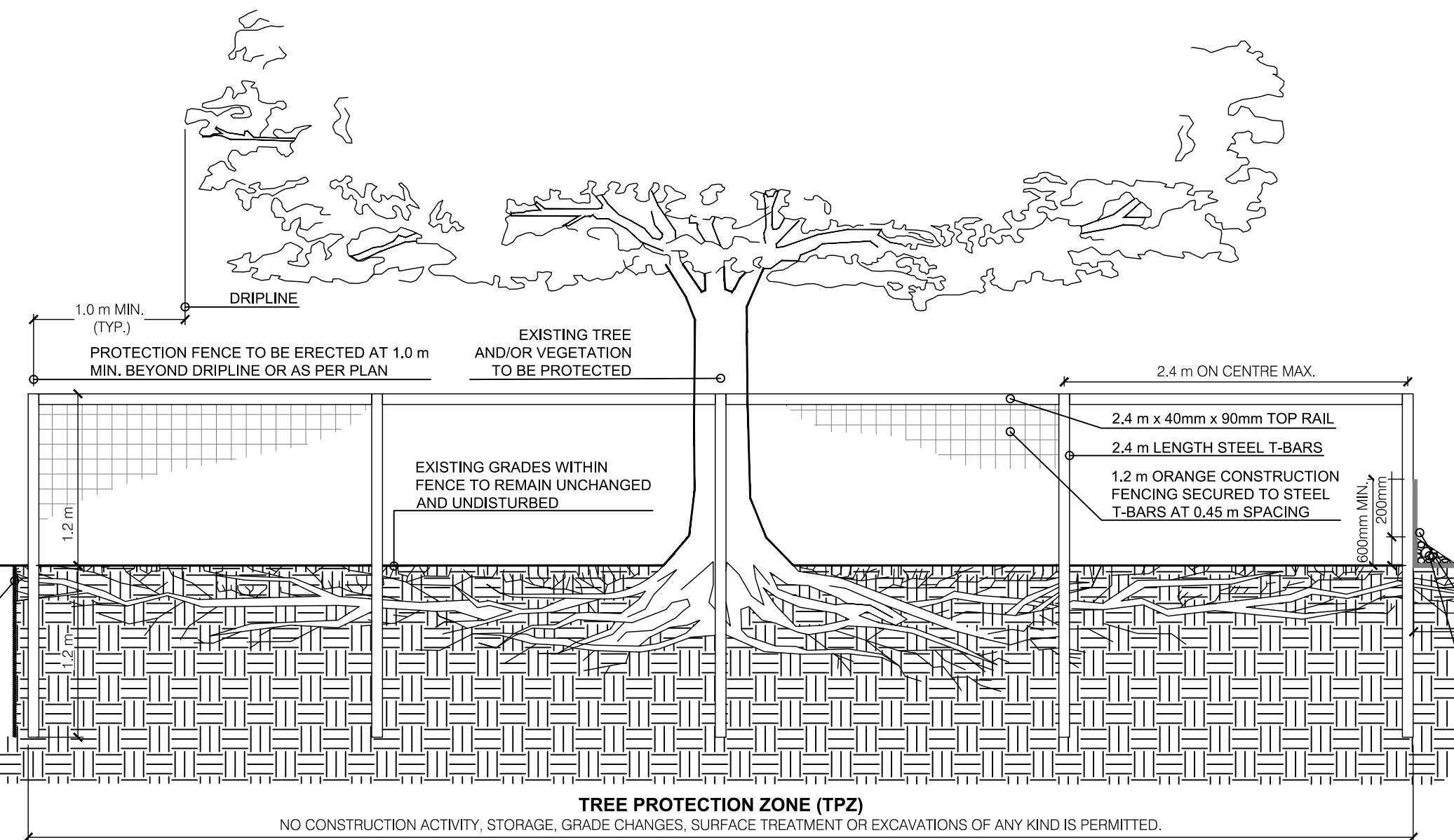
Tag #	Species	Common Name	Diameter at Breast Height (DBH) cm or range (cm)	Drip Line Radius (m)	Condition	Recommended Action	Notes
1	<i>Quercus rubra</i>	Red Oak	10	1.0	Very Good	Preserve and Protect	
2	<i>Quercus rubra</i>	Red Oak	10	1.0	Very Good	Remove	
3	<i>Quercus rubra</i>	Red Oak	10	2.5	Very Good	Remove	
4	<i>Quercus rubra</i>	Red Oak	11	1.5	Excellent	Remove	
5	<i>Picea glauca</i>	White Spruce	10	1.5	Excellent	Preserve and Protect	
6	<i>Picea glauca</i>	White Spruce	10	1.0	Very Good	Preserve and Protect	
7	<i>Picea glauca</i>	White Spruce	10	1.3	Very Good	Preserve and Protect	
8	<i>Picea glauca</i>	White Spruce	10	1.3	Excellent	Preserve and Protect	
9	<i>Picea glauca</i>	White Spruce	11	1.1	Very Good	Preserve and Protect	
10	<i>Picea glauca</i>	White Spruce	11	1.2	Very Good	Preserve and Protect	
11	<i>Picea glauca</i>	White Spruce	11	0.9	Excellent	Remove	
12	<i>Picea glauca</i>	White Spruce	12	1.0	Very Good	Preserve and Protect	

NOTES:

- ATTACHMENT OF FENCE TO TREES WILL NOT BE PERMITTED.
- ANY ROOTS EXPOSED IN CONSTRUCTION AREA ARE TO BE HAND PRUNED USING PROPER ARBORICULTURAL PRACTICES.
- UNDER NO CIRCUMSTANCES SHALL ANY CONSTRUCTION MATERIALS, EQUIPMENT OR VEHICLES BE PLACED WITHIN THE TREE PROTECTION ZONE.
- ALL TREE PROTECTION TO BE ERRECTED PRIOR TO ANY CONSTRUCTION ACTIVITY AND REMAIN IN PLACE UNTIL ALL CONSTRUCTION HAS BEEN COMPLETED. TREE PROTECTION FENCING TO BE REVIEWED AND APPROVED BY THE PROJECT ARBORIST PRIOR TO THE START OF ANY CONSTRUCTION. OBTAIN WRITTEN APPROVAL FROM CONTRACT ADMINISTRATOR PRIOR TO REMOVAL OF FENCING.
- ALL TREE PROTECTION FENCING SHALL BE REMOVED PRIOR TO PROJECT FINAL ACCEPTANCE.

PRUNE ANY ROOTS ENCOUNTERED DURING EXCAVATION BY CLEANLY SEVERING ROOTS PRIOR TO STRIPPING AND REMOVAL OF SOIL. ANY EXPOSED ROOTS <2.5cm SHALL BE PRUNED BACK TO SOIL FACE TO PREVENT FURTHER DAMAGE

EXCAVATED SUBGRADE (DEPTH VARIES)



1 TREE PROTECTION FENCE
TPP-1 N.T.S.

CLIENT
CHICK-FIL-A
BUILDING 17 333 HUNTMAR DRIVE,
KANATA, ONTARIO

COPYRIGHT
This drawing has been prepared solely for the intended use. Any reproduction or distribution for any purpose other than authorized by IBI Group is forbidden. Written dimensions shall have precedence over scaled dimensions. Contractors shall verify and be responsible for all dimensions and conditions on the job, and IBI Group shall be informed of any variations from the dimensions and conditions shown on the drawing. Shop drawings shall be submitted to IBI Group for general confirmation before proceeding with fabrication.
IBI Group Professional Services (Canada) Inc.
is a member of the IBI Group of companies.

ISSUES

No.	DESCRIPTION	DATE
1	FOR CLIENT REVIEW	2023.03.14
2	ISSUED FOR SPA	2023.06.01
3	ISSUED FOR SPA	2023.07.06

NOT FOR CONSTRUCTION

KEY PLAN
N.T.S.

LEGEND

- EXISTING DECIDUOUS TREE
- EXISTING CONIFEROUS TREE
- TREE TO BE PRESERVED
- TREE IDENTIFICATION TAGS
- TREE TO BE REMOVED
- TEMPORARY TREE PROTECTION FENCING

SEAL
ASSOCIATION OF LANDSCAPE ARCHITECTS
MEMBER
2023-07-06

SITE PLAN NUMBER

PRIME CONSULTANT
IBI GROUP
Suite 101 - 410 Albert Street
Waterloo ON N2L 3V3 Canada
Tel: 519 565 2255
ibi@ibigroup.com

PROJECT
CHICK-FIL-A
BUILDING 17 333 HUNTMAR DRIVE,
KANATA, ONTARIO

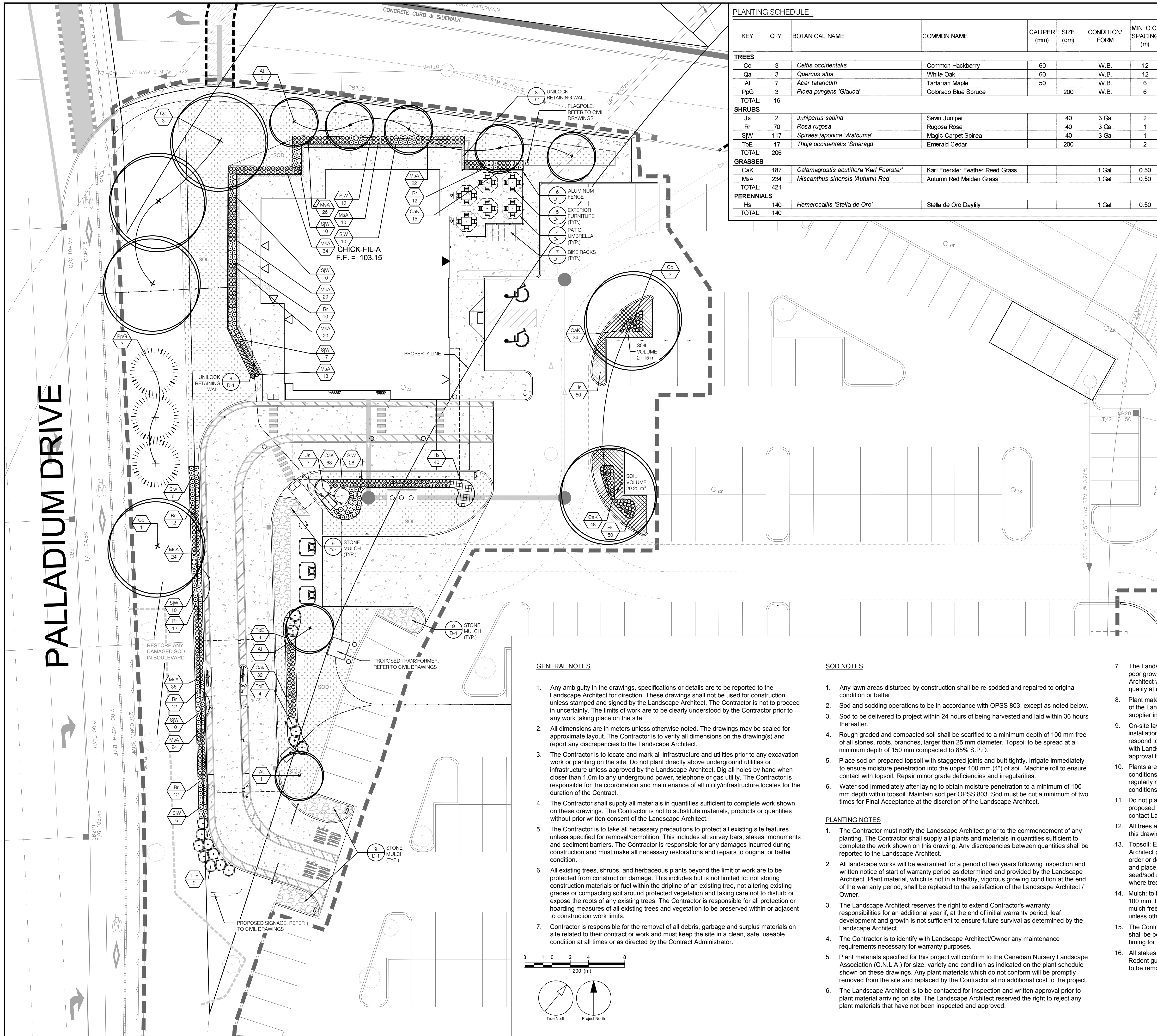
PROJECT NO: 141991
DRAWN BY: R.S.
PROJECT MGR: M.P.

CHECKED BY: M.P.
APPROVED BY: T.M.

SHEET TITLE
TREE PROTECTION PLAN

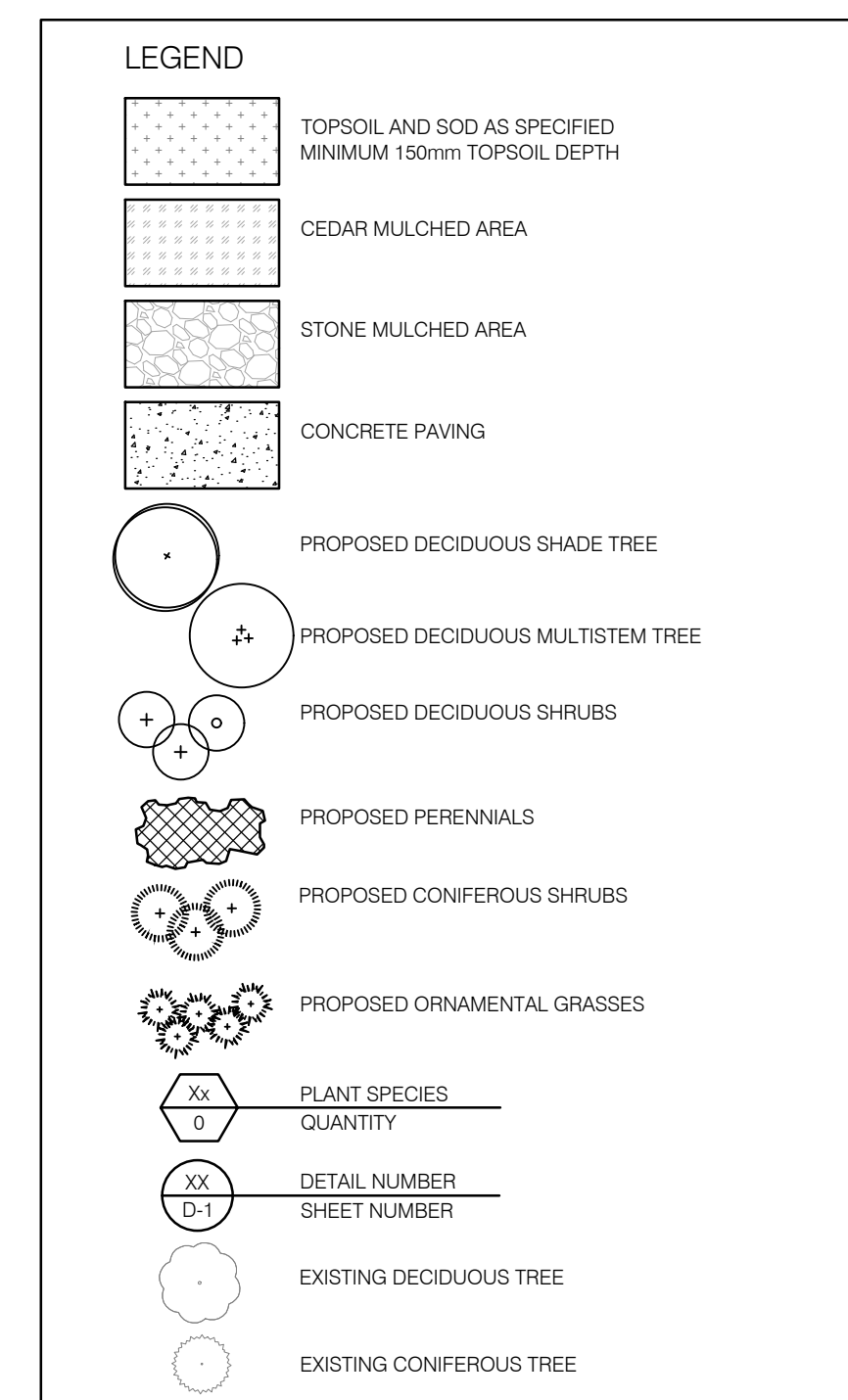
SHEET NUMBER TPP-1 **ISSUE** 3

File Location: Q:\141991_Chick-Fil-A_T.P.Production\7.03_Design\Landscaping\141991_TPP.dwg
Last Saved: July 16, 2023, by: Rishika Shetty
Plotted: Tuesday, July 18, 2023 11:07:21 AM by: Rishika Shetty



PLANTING SCHEDULE :

KEY	QTY.	BOTANICAL NAME	COMMON NAME	CALIPER (mm)	SIZE (cm)	CONDITION/FORM	MIN. O.C. SPACING (m)
TREES							
Co	3	<i>Celtis occidentalis</i>	Common Hackberry	60		W.B.	12
Qa	3	<i>Quercus alba</i>	White Oak	60		W.B.	12
At	7	<i>Acer tataricum</i>	Tartarian Maple	50		W.B.	6
PpG	3	<i>Picea pungens 'Glauca'</i>	Colorado Blue Spruce	200		W.B.	6
TOTAL:	16						
SHRUBS							
Js	2	<i>Juniperus sabina</i>	Savin Juniper	40		3 Gal.	2
Rr	70	<i>Rosa rugosa</i>	Rugosa Rose	40		3 Gal.	1
SjW	117	<i>Spiraea japonica 'Walburna'</i>	Magic Carpet Spirea	40		3 Gal.	1
ToE	17	<i>Thuja occidentalis 'Smaragd'</i>	Emerald Cedar	200			2
TOTAL:	206						
GRASSES							
CaK	187	<i>Calamagrostis acutiflora 'Karl Foerster'</i>	Karl Foerster Feather Reed Grass			1 Gal.	0.50
Msa	234	<i>Miscanthus sinensis 'Autumn Red'</i>	Autumn Red Maiden Grass			1 Gal.	0.50
TOTAL:	421						
PERENNIALS							
Hs	140	<i>Hemerocallis 'Stella de Oro'</i>	Stella de Oro Daylily			1 Gal.	0.50
TOTAL:	140						



CLIENT
CHICK-FIL-A

BUILDING 17 333 HUNTMAR DRIVE,
KANATA, ONTARIO

COPYRIGHT
This drawing has been prepared solely for the intended use. This any reproduction or distribution for any purpose other than that authorized by IBI Group is forbidden. While dimensions shall have precedence over scaled dimensions, Contractor shall verify and be responsible for all dimensions and conditions on the job, and IBI Group shall be informed of any variations from the dimensions and conditions shown on the drawing. Shop drawings shall be submitted to IBI Group for general conformance before proceeding with fabrication.

IBI Group Professional Services (Canada) Inc.
is a member of the IBI Group of companies.

ISSUES

No.	DESCRIPTION	DATE
1	FOR CLIENT REVIEW	2023.03.14
2	ISSUED FOR SPA	2023.06.01
3	ISSUED FOR SPA	2023.07.06

NOT FOR CONSTRUCTION

KEY PLAN
N.T.S.

CONSULTANTS

SEAL

ASSOCIATION OF LANDSCAPE ARCHITECTS
PROF. MEMBER
2023-07-06

SITE PLAN NUMBER

PRIME CONSULTANT
IBI GROUP
Suite 101 - 410 Albert Street
Waterloo ON N2L 3V3 Canada
tel 519 585 2255
ibigroup.com

PROJECT
CHICK-FIL-A

BUILDING 17 333 HUNTMAR DRIVE,
KANATA, ONTARIO

PROJECT NO:
141991

DRAWN BY:
R.S.

CHECKED BY:
M.P.

PROJECT MGR:
M.P.

APPROVED BY:
T.M.

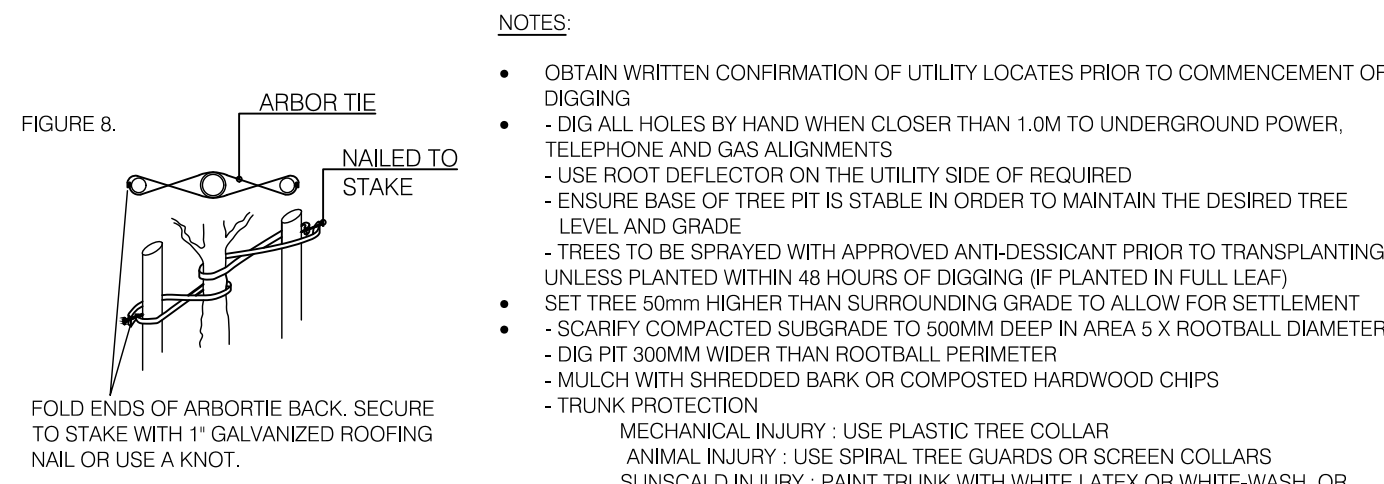
SHEET TITLE
LANDSCAPE PLAN

SHEET NUMBER
LP-1

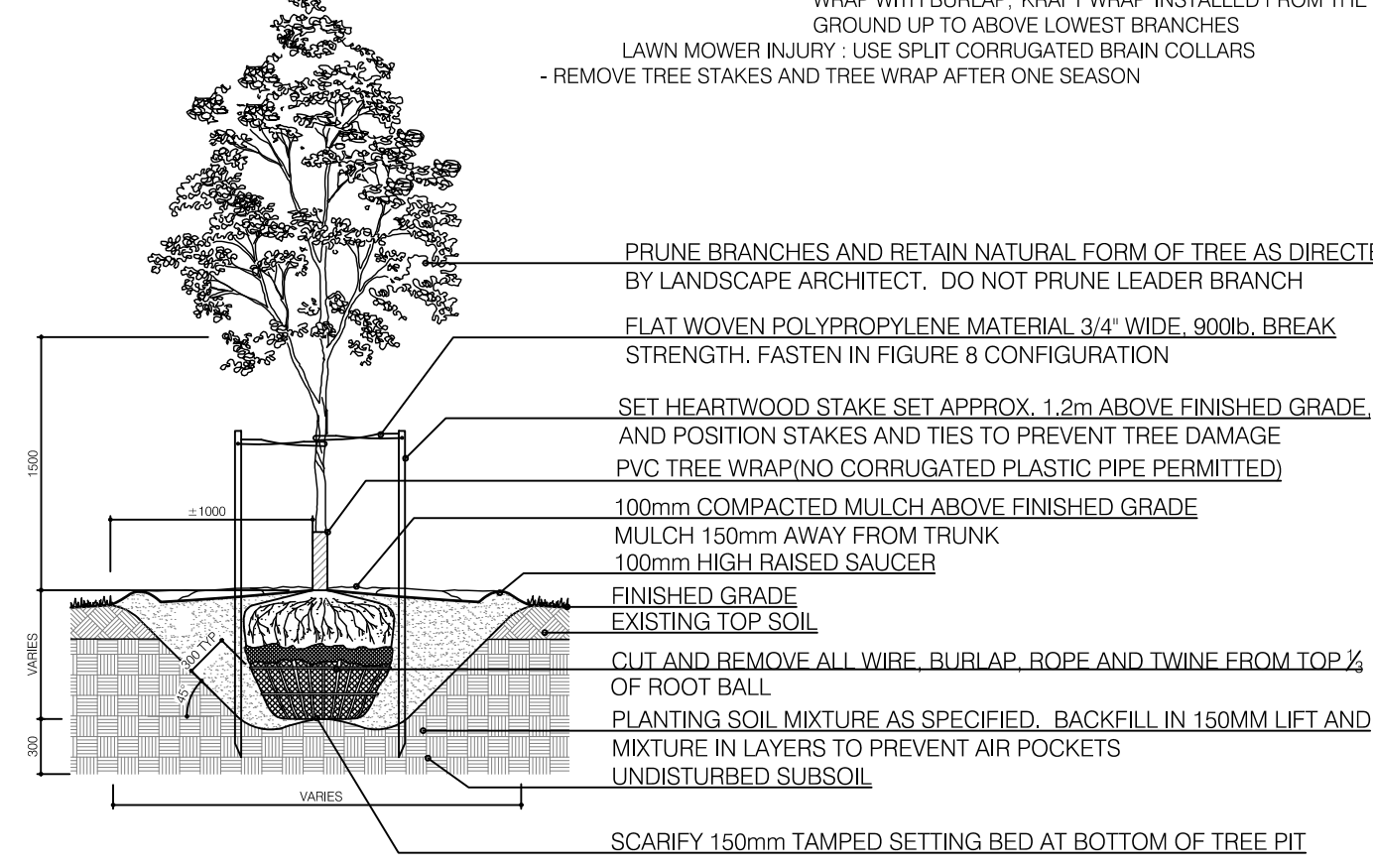
ISSUE
3

- GENERAL NOTES**
- Any ambiguity in the drawings, specifications or details are to be reported to the Landscape Architect for direction. These drawings shall not be used for construction unless stamped and signed by the Landscape Architect. The Contractor is not to proceed in uncertainty. The limits of work are to be clearly understood by the Contractor prior to any work taking place on the site.
 - All dimensions are in meters unless otherwise noted. The drawings may be scaled for approximate layout. The Contractor is to verify all dimensions on the drawing(s) and report any discrepancies to the Landscape Architect.
 - The Contractor is to locate and mark all infrastructure and utilities prior to any excavation work or planting on the site. Do not plant directly above underground utilities or infrastructure unless approved by the Landscape Architect. Dig all holes by hand when closer than 1.0m to any underground power, telephone or gas utility. The Contractor is responsible for the coordination and maintenance of all utility/infrastructure locates for the duration of the Contract.
 - The Contractor shall supply all materials in quantities sufficient to complete work shown on these drawings. The Contractor is not to substitute materials, products or quantities without prior written consent of the Landscape Architect.
 - The Contractor is to take all necessary precautions to protect all existing site features unless specified for removal/demolition. This includes all survey bars, stakes, monuments and sediment barriers. The Contractor is responsible for all protection or hoarding measures of all existing trees and vegetation to be preserved within or adjacent to construction work limits.
 - Contractor is responsible for the removal of all debris, garbage and surplus materials on site related to their contract or work and must keep the site in a clean, safe, useable condition at all times or as directed by the Contract Administrator.
- SOIL NOTES**
- Any lawn areas disturbed by construction shall be re-sodded and repaired to original condition or better.
 - Sod and sodding operations to be in accordance with OPSS 803, except as noted below.
 - Sod to be delivered to project within 24 hours of being harvested and laid within 36 hours thereafter.
 - Rough graded and compacted soil shall be scarified to a minimum depth of 100 mm free of all stones, roots, branches, larger than 25 mm diameter. Topsoil to be spread at a minimum depth of 150 mm compacted to 85% S.P.D.
 - Place sod on prepared topsoil with staggered joints and butt tightly. Irrigate immediately to ensure moisture penetration into the upper 100 mm (4") of soil. Machine roll to ensure contact with topsoil. Repair minor grade deficiencies and irregularities.
 - Water sod immediately after laying to obtain moisture penetration to a minimum of 100 mm depth within topsoil. Maintain sod per OPSS 803. Sod must be cut a minimum of two times for Final Acceptance at the discretion of the Landscape Architect.
- PLANTING NOTES**
- The Contractor must notify the Landscape Architect prior to the commencement of any planting. The Contractor shall supply all plants and materials in quantities sufficient to complete the work shown on this drawing. Any discrepancies between quantities shall be reported to the Landscape Architect.
 - All landscape works will be warranted for a period of two years following inspection and written notice of start of warranty period as determined and provided by the Landscape Architect. Plant material, which is not in a healthy, vigorous growing condition at the end of the warranty period, shall be replaced to the satisfaction of the Landscape Architect / Owner.
 - The Landscape Architect reserves the right to extend Contractor's warranty responsibilities for an additional year if, at the end of initial warranty period, leaf development and growth is not sufficient to ensure future survival as determined by the Landscape Architect.
 - The Contractor is to identify with Landscape Architect/Owner any maintenance requirements necessary for warranty purposes.
 - Plant materials specified for this project will conform to the Canadian Nursery Landscape Association (C.N.L.A.) for size, variety and condition as indicated on the plant schedule shown on these drawings. Any plant materials which do not conform will be promptly removed from the site and replaced by the Contractor at no additional cost to the project.
 - The Landscape Architect is to be contacted for inspection and written approval prior to plant material arriving on site. The Landscape Architect reserved the right to reject any plant materials that have not been inspected and approved.

- The Landscape Architect reserves the right to refuse acceptance of any plant displaying poor growth habits, injury or disease. Any plant material that is rejected by the Landscape Architect will be promptly removed from the site and replaced with material of acceptable quality at no additional charge to the project.
- Plant materials collected from wild sources will not be accepted without written approval of the Landscape Architect. The Landscape Architect reserves the right to require that supplier invoices be submitted for inspection and approval prior to acceptance.
- On-site layout of the plant materials to be approved by the Landscape Architect prior to installation. Minor field adjustments to plant material locations may be necessary to respond to the locations of existing plants and site conditions. The Contractor to review with Landscape Architect where relocations are necessary. The Contractor must receive approval from Landscape Architect prior to installation.
- Plants are not to be installed during extreme heat, drought, or other undesirable conditions. Thoroughly water all plants immediately after installation. The Contractor shall regularly monitor site conditions and water as required to ensure healthy growth conditions throughout the duration of the warranty period.
- Do not plant directly in centerline of drainage swales or depression areas. Where proposed planting locations conflict with constructed swales or low-lying wet areas, contact Landscape Architect for direction.
- All trees and shrubs are to be planted in accordance with the planting details shown on this drawing.
- Topsoil: Each source of topsoil, imported or native to be approved by Landscape Architect prior to use. Submit topsoil analysis/test results to Landscape Architect prior to order or delivery to site. Testing to be in accordance with Contract specifications. Supply and place topsoil in accordance with OPSS 802 to a minimum depth of 150mm in seed/sod areas, 600mm depth in perennial shrub planting beds, and 1000mm depth where trees are supported, unless otherwise specified.
- Mulch: to be spread uniformly around the base of trees and shrubs to a minimum depth of 100 mm. Do not place mulch in direct contact with trunk or stem(s). Allow a 100 mm mulch free zone at trunk/stems. Shrubs to be in continuously mulched planting beds unless otherwise specified.
- The Contractor is to remove dead or damaged branches on trees or shrubs. All pruning shall be performed in accordance with standard horticultural practices and appropriate timing for each species.
- All stakes and associated ties are to be removed after the first full growing season. Rodent guards are to be removed at the conclusion of the warranty period. Gatorbags are to be removed for winter months.

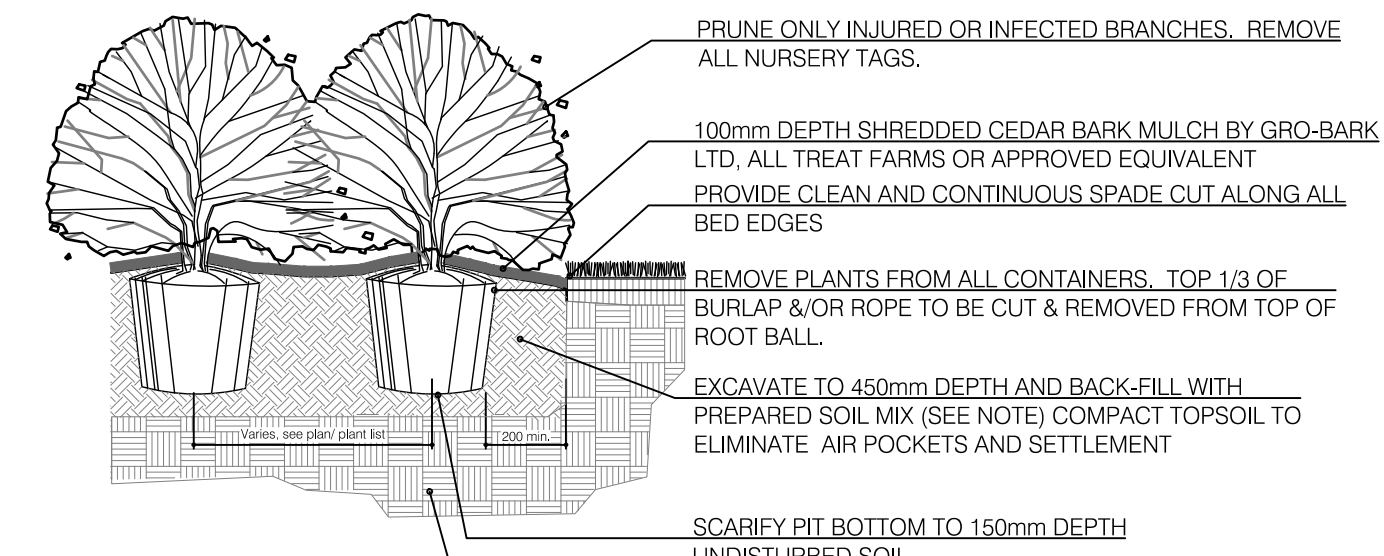


- NOTES:**
- OBTAIN WRITTEN CONFIRMATION OF UTILITY LOCATES PRIOR TO COMMENCEMENT OF DIGGING
 - DIG ALL HOLES BY HAND WHEN CLOSER THAN 1.0M TO UNDERGROUND POWER, TELEPHONE AND GAS ALIGNMENTS
 - USE ROOT DEFLECTOR ON THE UTILITY SIDE OF REQUIRED
 - ENSURE BASE OF TREE PIT IS STABLE IN ORDER TO MAINTAIN THE DESIRED TREE LEVEL AND GRADE
 - TREES TO BE SPRAYED WITH APPROVED ANTI-DESICCANT PRIOR TO REPLANTING UNLESS PLANTED WITHIN 48 HOURS OF DIGGING (IF PLANTED IN FULL LEAF)
 - SET TREE 50mm HIGHER THAN SURROUNDING GRADE TO ALLOW FOR SETTLEMENT
 - SCARIFY COMPACTED SUBGRADE TO 500MM DEEP IN AREA 5 X ROOTBALL DIAMETER
 - DIG PIT 300MM WIDER THAN ROOTBALL PERIMETER
 - MULCH WITH SHREDDDED BARK OR COMPOSTED HARDWOOD CHIPS
 - TRUNK PROTECTION
 - MECHANICAL INJURY - USE PLASTIC TREE COLLAR
 - ANIMAL INJURY - USE SPIRAL TREE GUARDS OR SCREEN COLLARS
 - SUNSCALD INJURY - PAINT TRUNK WITH WHITE LATEX OR WHITE-WASH OR WRAP WITH BURLAP, KRAFT WRAP INSTALLED FROM THE GROUND UP TO ABOVE LOWEST BRANCHES
 - LAWN MOWER INJURY - USE SPLIT CORRUGATED BRASS COLLARS
 - REMOVE TREE STAKES AND TREE WRAP AFTER ONE SEASON



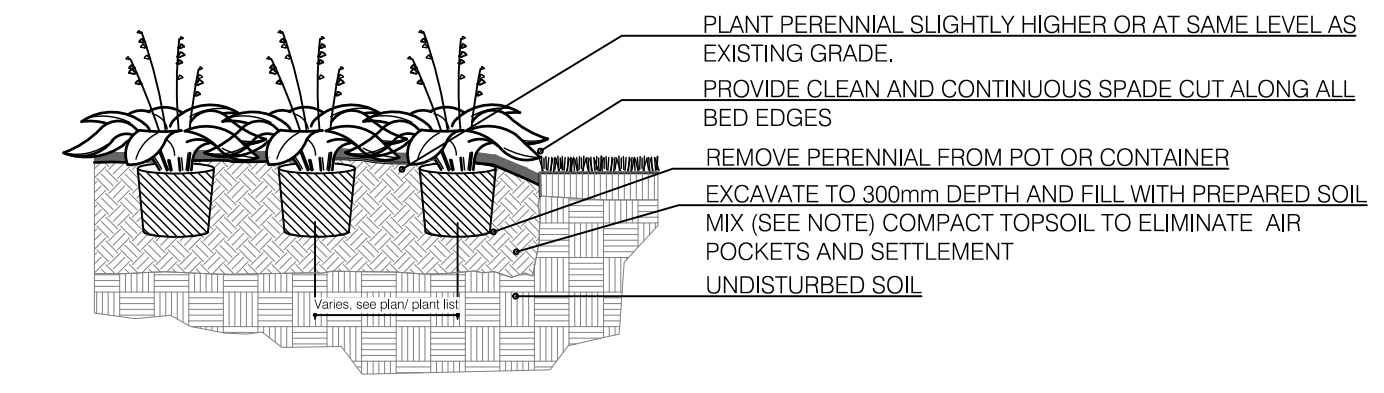
- NOTES:**
- PRUNE BRANCHES AND RETAIN NATURAL FORM OF TREE AS DIRECTED BY LANDSCAPE ARCHITECT. DO NOT PRUNE LEADER BRANCH
 - FLAT WOVEN POLYPROPYLENE MATERIAL 3/4" WIDE, 900lb BREAK STRENGTH. FASTEN IN FIGURE 6 CONFIGURATION
 - SET HEARTWOOD STAKE SET APPROX. 1.2m ABOVE FINISHED GRADE, AND POSITION STAKES AND TIES TO PREVENT TREE DAMAGE
 - PVC TREE WRAPPING CORRUGATED PLASTIC PIPE PERMITTED
 - 100mm COMPACTED MULCH ABOVE FINISHED GRADE
 - MULCH 150mm AWAY FROM TRUNK
 - 100mm HIGH RAISED SAUCER
 - FINISHED GRADE EXISTING TOP SOIL
 - CUT AND REMOVE ALL WIRE, BURLAP, ROPE AND TWINE FROM TOP 1/2 OF ROOT BALL
 - PLANTING SOIL MIXTURE AS SPECIFIED. BACKFILL IN 150MM LIFT AND MIXTURE IN LAYERS TO PREVENT AIR POCKETS
 - UNDISTURBED SUBSOIL
 - SCARIFY 150mm TAMPED SETTING BED AT BOTTOM OF TREE PIT

1 BALLED & BURLAPPED/WIRE BASKET DECIDUOUS TREE
D-1 N.T.S.



- NOTES:**
- SOIL MIXTURE: FOUR (4) PARTS NATIVE SOIL, ONE (1) PART WELL ROTTED COMPOST.
 - SAUCER SHALL BE SOAKED WITH WATER AND MULCHED IMMEDIATELY FOLLOWING PLANTING.
 - ALL DIMENSIONS ARE IN mm.
 - IN POORLY DRAINED SOILS PLANT SHRUB SLIGHTLY HIGHER THAN ADJACENT GRADE.
 - ALL PLANTS TO BE STRAIGHT AND PLANTED VERTICALLY REGARDLESS OF SLOPE.

2 BALLED AND BURLAPPED/POTTED SHRUB
D-1 N.T.S.



- NOTES:**
- SOIL MIXTURE: FOUR (4) PARTS NATIVE SOIL, ONE (1) PART WELL ROTTED COMPOST.
 - SAUCER SHALL BE SOAKED WITH WATER AND MULCHED IMMEDIATELY FOLLOWING PLANTING.
 - ALL DIMENSIONS ARE IN mm.
 - CUT AND REMOVE CONTAINER. SCARIFY ROOTBALL SIDES.
 - ALL PLANTS TO BE STRAIGHT AND PLANTED VERTICALLY REGARDLESS OF SLOPE.
- CONTRACTOR SHALL PROVIDE 75mm MULCH FOR ALL PERENNIALS EXCEPT GROUNDCOVERS UNLESS SPECIFIED OTHERWISE.

3 CONTAINER GROWN PERENNIAL/GRASS
D-1 N.T.S.

PATIO UMBRELLA

Manufacturer:
TUUCI

Contact Information:
TriMark
508-399-2400
www.trimarkusa.com

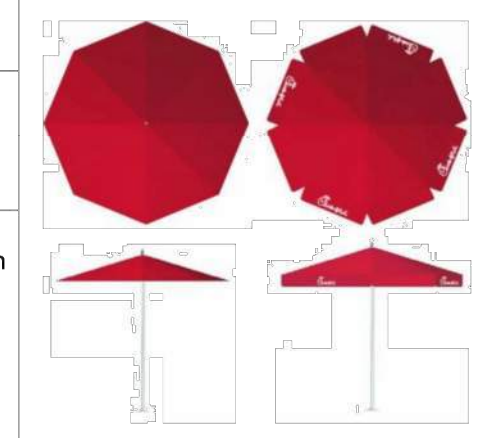
Standard Description:
An aluminum frame umbrella for use on Restaurant patios. Available in the market profile (no logo) or the valence profile (w/ logo).

Dimensions: 7.5' - Canopy: 94" overall height, 88" overall width, 76" from floor to bottom edge of canopy
9' - Canopy: 92" overall height, 105" overall width, 66" from floor to bottom of canopy, 10" valence height

Colors: Canopy- Jockey Red; Post- Polished Titanium Aluminum

Product Used In:
Concepts: All
Prototype: All

Ordering Information:
Model #: 7'-6" Market Profile
9'-0" Valence Profile



DESIGN	12500	PATIO UMBRELLA	09.17.18
	PST		1/1

EXTERIOR FURNITURE – SQUARE SEAT CLUSTER

Manufacturer:
Benchmark Contract Furniture

Contact Information:
Benchmark Contract Furniture
904-246-5060
www.benchmarkcontractfurniture.com

Standard Description:
A cluster of seating for use on restaurant patio when attached chairs are required. Available with as three-top or four-top. Three-top option allows room for a wheelchair to approach the table.

Table Size: Three-Seat- 40"x40"
Four-Seat- 36"x36"

Overall Size: Three-Seat- 82"x61"
Four-Seat- 78"x78"

Seats: Swivel seats with water jet Chick-fil-A logo

Finish: RAL 49 / 66220 (C34 Bronze One coat)

Product Used In:
Concepts: All
Prototype: All

Ordering Information:
Model #: Three-top- A930-4040-CMPS-CFA
Four-top- A930-3636-CMPS-CFA



DESIGN	12500	SQUARE SEAT CLUSTER	09.17.18
	PST		1/1

5 EXTERIOR FURNITURE
D-1 N.T.S.

FENCE- ALUMINUM

Manufacturer:
Ultra Aluminum Mfg.

Contact Information:
Ultra Aluminum Mfg.
517-548-6755

Standard Description:
For use around exterior patio

Ratings: Meets AAME 2604-5 standards for UV protection

Dimensions: Post- 2", 2 1/2", or 3" square
Panel- 6'-0" wide x 3'-0", 3'-6", 4'-0", or 4'-6" high

Finish: Satin Bronze

Product Used In:
Concepts: All
Prototype: All
Palette: All

Ordering Information:
UAF 200- Flat Top



DESIGN	02870	FENCE- ALUMINUM	05.09.18
	PST		1/1

6 ALUMINUM FENCE
D-1 N.T.S.

BIKE RACK

Manufacturer:
Belson Outdoors

Contact Information:
Belson Outdoors
800-323-5664
sales@belson.com

Standard Description:
Orion In-ground or surface mount steel bike rack

Dimensions: 40"L x 33"H x 2-3/8" round tube

Finish: Black Powder Coated

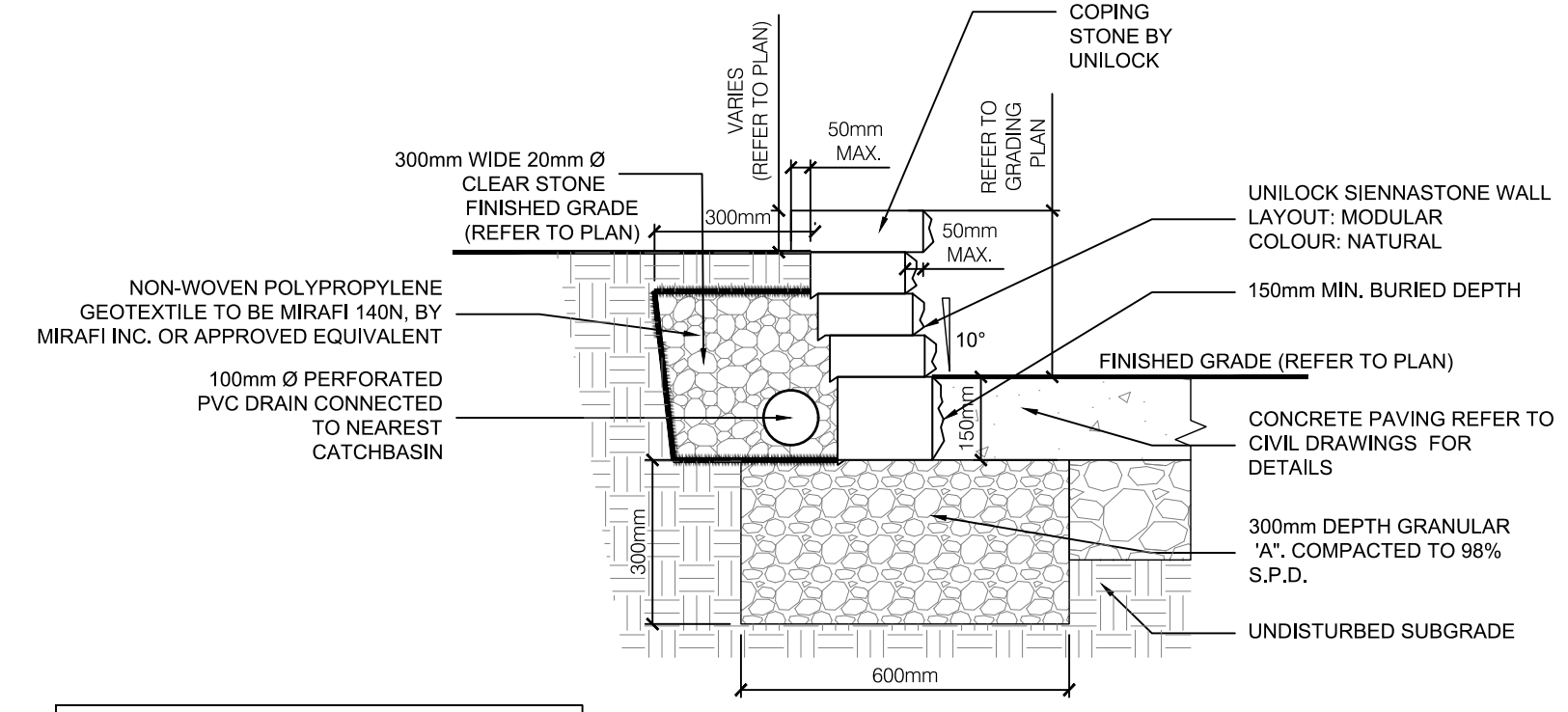
Product Used In:
Concepts: FSR, In-Line, Licensee
Prototype: All
Palette: All

Ordering Information:
In Ground: ORN-2-IG-P
Surface Mount: ORN-2-SF-P



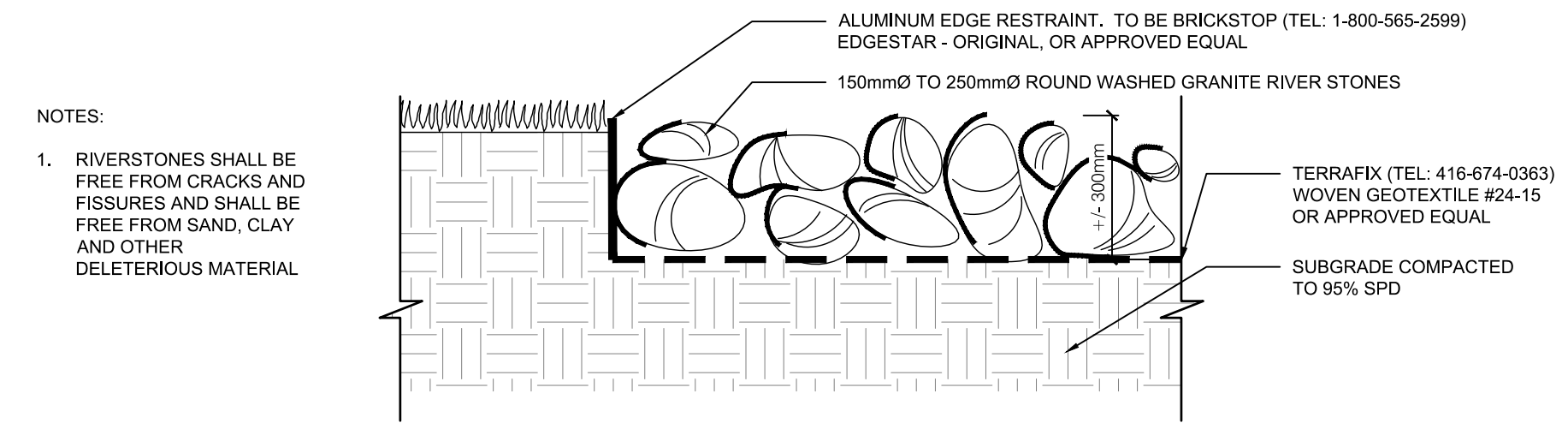
DESIGN	02870	BIKE RACK	05.09.18
	PST		1/1

7 BIKE RACK
D-1 N.T.S.



- NOTES:**
- ALL STONE UNITS AND WALL TO BE PERFECTLY LEVEL (HORIZONTALLY & VERTICALLY).
 - INSTALL IN ACCORDANCE WITH MANUFACTURER'S SPECIFICATIONS.
 - SEE GRADING PLANS FOR ELEVATIONS
 - SHOULD WALL EXCEED BUILDING CODE REQUIREMENTS, STRUCTURAL ENGINEER WILL BE REQUIRED.
 - FINISHED GRADE SHOULD BE TO BOTTOM OF CAP STONE.
- SPECIFICATIONS:**
SUPPLIER: UNILOCK
PRODUCT: SIENASTONE™ VERTICAL
FINISH: CLASSIC
COLOUR: NATURAL
SIZE: 1200 X 925 X 185mm
WEBSITE: https://commercial.unilock.com/
PHONE: 905-427-8448

8 UNILOCK RETAINING WALL DETAIL
D-1 N.T.S.



- NOTES:**
- RIVERSTONES SHALL BE FREE FROM CRACKS AND FISSURES AND SHALL BE FREE FROM SAND, CLAY AND OTHER DELETERIOUS MATERIAL

9 STONE MULCH
D-1 N.T.S.

CLIENT
CHICK-FIL-A

BUILDING 17 333 HUNTMAR DRIVE,
KANATA, ONTARIO

COPYRIGHT
This drawing has been prepared solely for the intended use. No reproduction or distribution for any purpose other than that authorized by IBI Group is permitted. IBI Group shall have precedence over scaled dimensions. Contractors shall verify and be responsible for all dimensions and conditions on the job, and IBI Group shall be informed of any variations from the dimensions and conditions shown on the drawing. Shop drawings shall be submitted to IBI Group for general conformance before proceeding with fabrication.

IBI Group Professional Services (Canada) Inc.
is a member of the IBI Group of companies.

ISSUES	No.	DESCRIPTION	DATE
	1	FOR CLIENT REVIEW	2023.03.14
	2	ISSUED FOR SPA	2023.06.01
	3	ISSUED FOR SPA	2023.07.06

CONSULTANTS

CONTRACTOR SHALL PROVIDE 75mm MULCH FOR ALL PERENNIALS EXCEPT GROUNDCOVERS UNLESS SPECIFIED OTHERWISE.

ASSOCIATION OF LANDSCAPE ARCHITECTS
ONARIO
MEMBER
283-07-06
TIMOTHY J. MCCORMACK

SITE PLAN NUMBER

PRIME CONSULTANT
IBI GROUP
Suite 101 - 410 Albert Street
Waterloo ON N2L 3V3 Canada
tel 519 585 2255
ibigroup.com

PROJECT
CHICK-FIL-A

BUILDING 17 333 HUNTMAR DRIVE,
KANATA, ONTARIO

PROJECT NO:
141991

DRAWN BY: R.S.	CHECKED BY: M.P.
PROJECT MGR: M.P.	APPROVED BY: T.M.

SHEET TITLE
LANDSCAPE DETAILS

SHEET NUMBER D-1	ISSUE 3
----------------------------	-------------------

SCALE CHECK

File Location: Q:\1141991_Chick-Fil-A_17.d; Production\7_03_Design\Landscapes\141991_L.dwg
Last Saved: July 12, 2023, by Raahika.Shenoy
Plotted: Tuesday, July 18, 2023 11:08:08 AM by Raahika.Shenoy