

Distances shown on this plan are ground distances and can be converted to grid distances by multiplying by the combined scale factor of 0.99994.

Bearings are MTM grid, derived from simultaneous GPS observations from monument A to B, shown hereon, having a bearing of N58°40'10" E and are referred to the Central Meridian of MTM Zone 9 (76°30' West Longitude) MTM NAD-83 (original).

Coordinate values are to urban accuracy in accordance with O. Reg. 216/10.

. Point A Northing 5032783.57 Easting 369146.71  
 . Point B Northing 5032835.90 Easting 369232.76

Caution: Coordinates cannot, in themselves, be used to re-establish corners or boundaries shown on this plan.

**Metric**

**DISTANCES AND COORDINATES SHOWN ON THIS PLAN ARE IN METRES AND CAN BE CONVERTED TO FEET BY DIVIDING BY 0.3048.**

**NOTICE OF APPLICATION**

No. OC

I REQUIRE THIS PLAN TO BE DEPOSITED UNDER THE LAND TITLES ACT.

DATE: \_\_\_\_\_

EDWARD M. LANCASTER  
 ONTARIO LAND SURVEYOR

**PLAN 4R-**

RECEIVED AND DEPOSITED DATE: \_\_\_\_\_

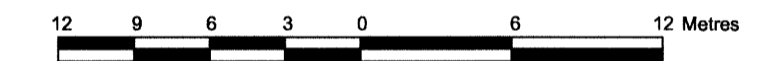
LAND REGISTRAR FOR THE LAND TITLES DIVISION OF OTTAWA-CARLETON NO. 4.

**SCHEDULE**

PART	ALL OF LOTS	REGISTERED PLAN	ALL OF PIN
1	43 TO 47 (BOTH INCLUSIVE) (SOUTH RIDEAU STREET) AND 44 (NORTH BESSERER STREET)	6	04212-0304

**PLAN OF SURVEY OF LOTS 43, 44, 45, 46, 47 ( SOUTH RIDEAU STREET ) And LOT 44 (NORTH BESSERER STREET) REGISTERED PLAN 6 CITY OF OTTAWA**  
 Surveyed by Annis, O'Sullivan, Vollebakk Ltd.

Scale 1 : 300



**Surveyor's Certificate**

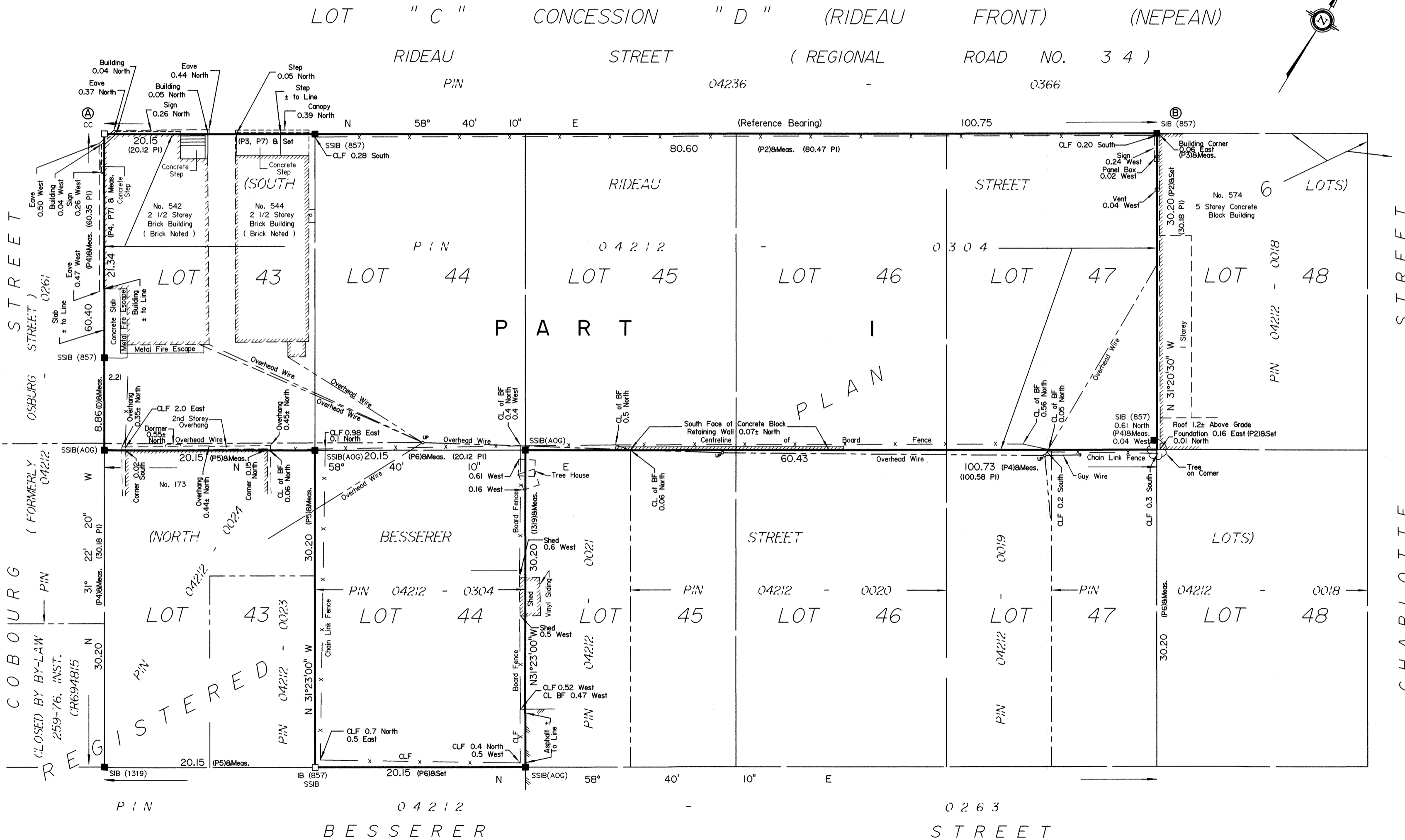
I CERTIFY THAT:

- This survey and plan are correct and in accordance with the Surveys Act, the Surveyors Act, the Land Titles Act and the regulations made under them.
- The survey was completed on the 27th day of September, 2012.

*October 2nd 2012*  
 Date *Edward M. Lancaster*  
 Edward M. Lancaster  
 Ontario Land Surveyor

**Notes & Legend**

- Denotes Survey Monument Planted
- Denotes Survey Monument Found
- SIB Standard Iron Bar
- SSIB Short Standard Iron Bar
- IB Iron Bar
- CC Cut Cross
- (WIT) Witness
- (AOG) Annis, O'Sullivan, Vollebakk Ltd.
- Meas. Measured
- BF Board Fence
- CL Centreline
- UP Utility Pole
- CLF Chain Link Fence
- D Inst. No. NS209045
- (P1) Historically Assumed Dimensions of Registered Plan 6
- (P2) Plan by (647), dated May 29, 1972
- (P3) Notes by (725), dated Sept. 6, 1958
- (P4) Plan by (857), dated Oct. 7, 1988
- (P5) Plan by (1319), dated Jan. 30, 1992
- (P6) Plan by (AOG), dated Dec. 8, 2003
- (P7) Plan by (857), dated Dec. 13, 1994



**ANNIS, O'SULLIVAN, VOLLEBEKK LTD.**  
 14 Concourse Gate, Suite 500  
 Nepean, Ont. K2E 7S6  
 Phone: (613) 727-0850 / Fax: (613) 727-1079  
 Email: Nepean@aovltd.com  
 Ontario Land Surveyors  
 Job No. 13241-12, Richcraft Lts 44-47 RP6 R DI N