

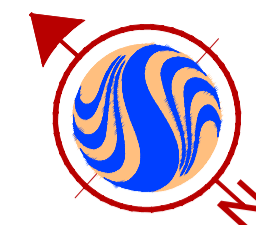
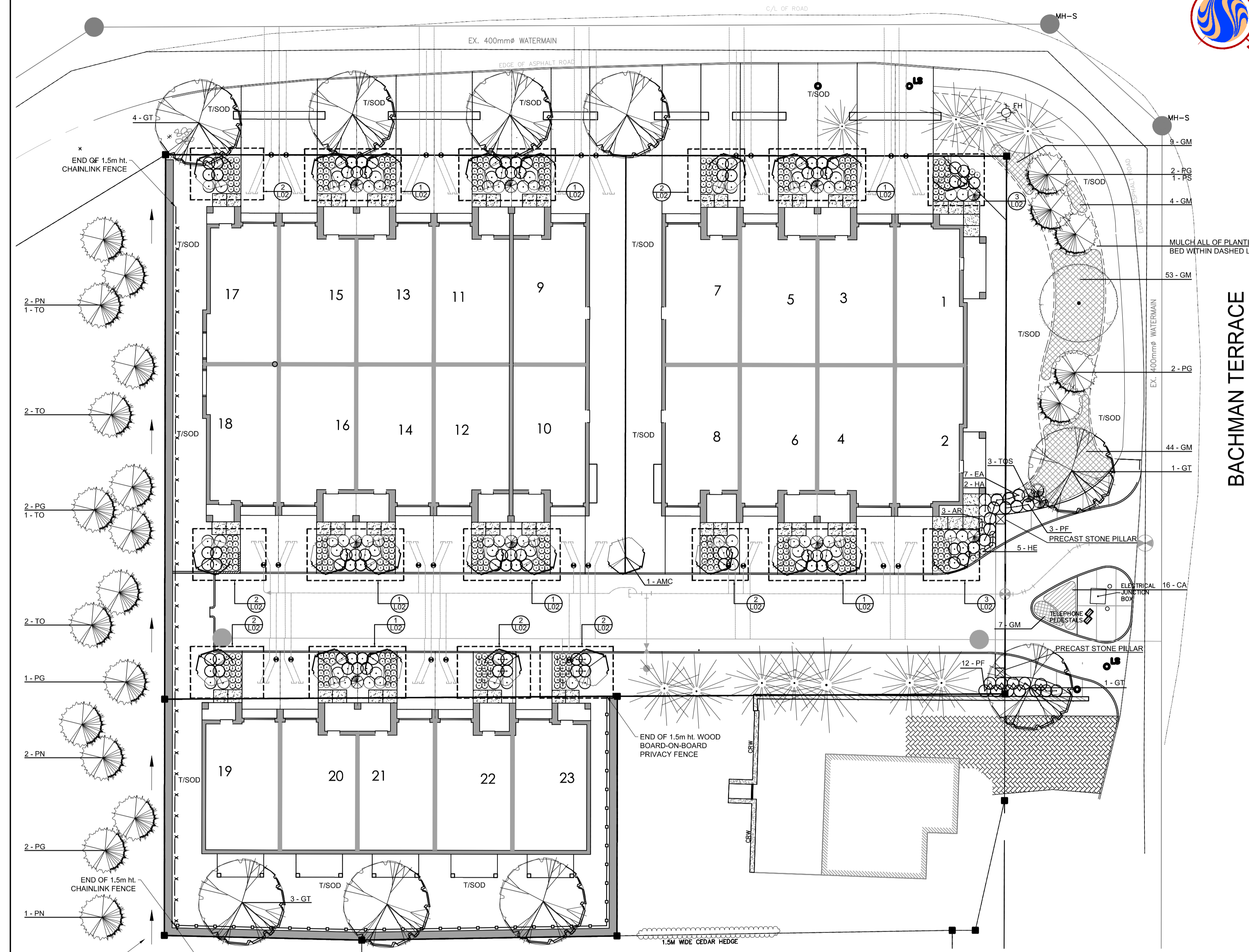
# BACHMAN TERRACE

Stantec  
1331 Clyde Avenue  
Ottawa, ON, Canada  
Tel. 1 (613) 724-4420  
www.stantec.com

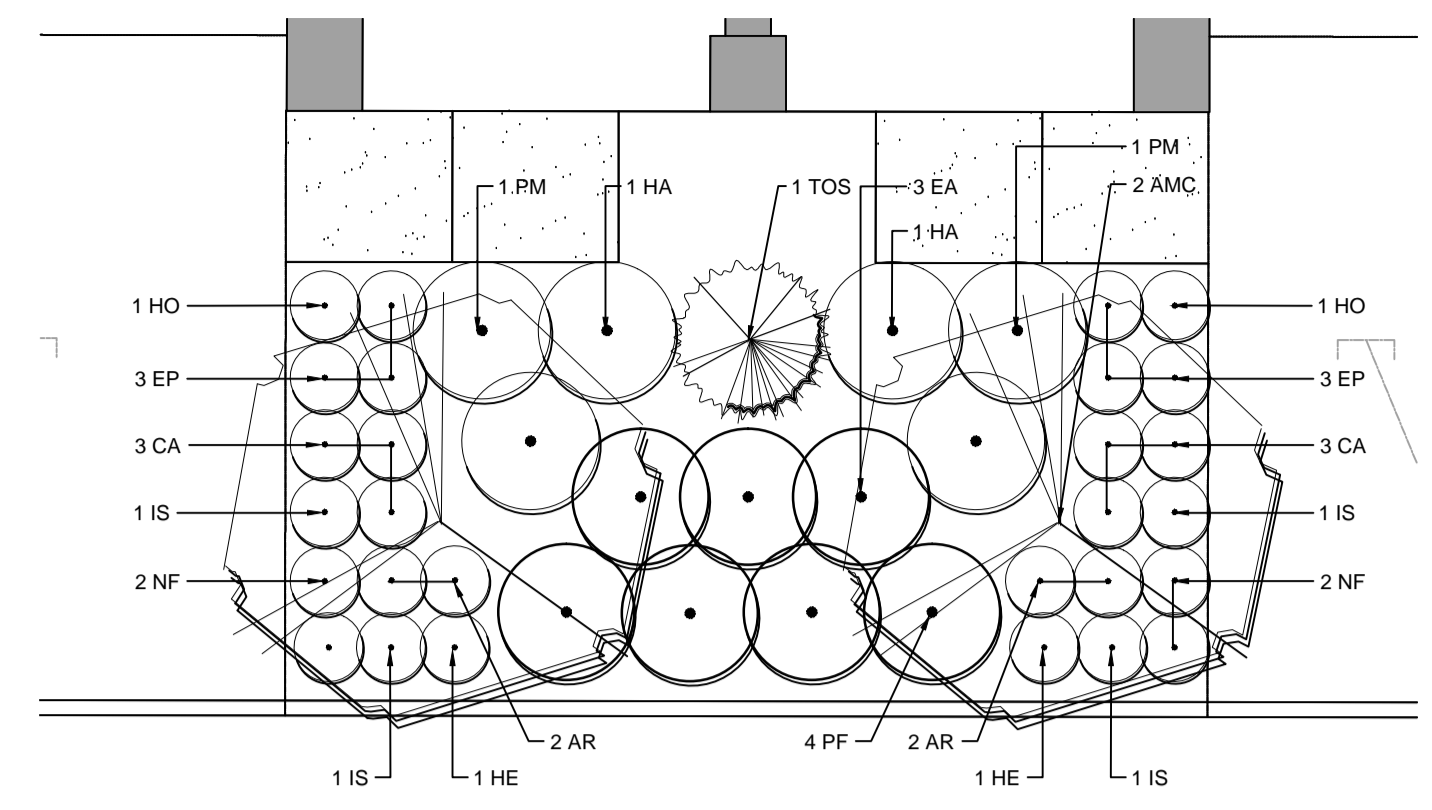
Copyright Reserved

The Contractor shall verify and be responsible for all dimensions. DO NOT scale the drawing - any errors or omissions shall be reported to Stantec without delay.  
The Copyrights to all designs and drawings are the property of Stantec. Reproduction or use for any purpose other than that authorized by Stantec is forbidden.

Consultants

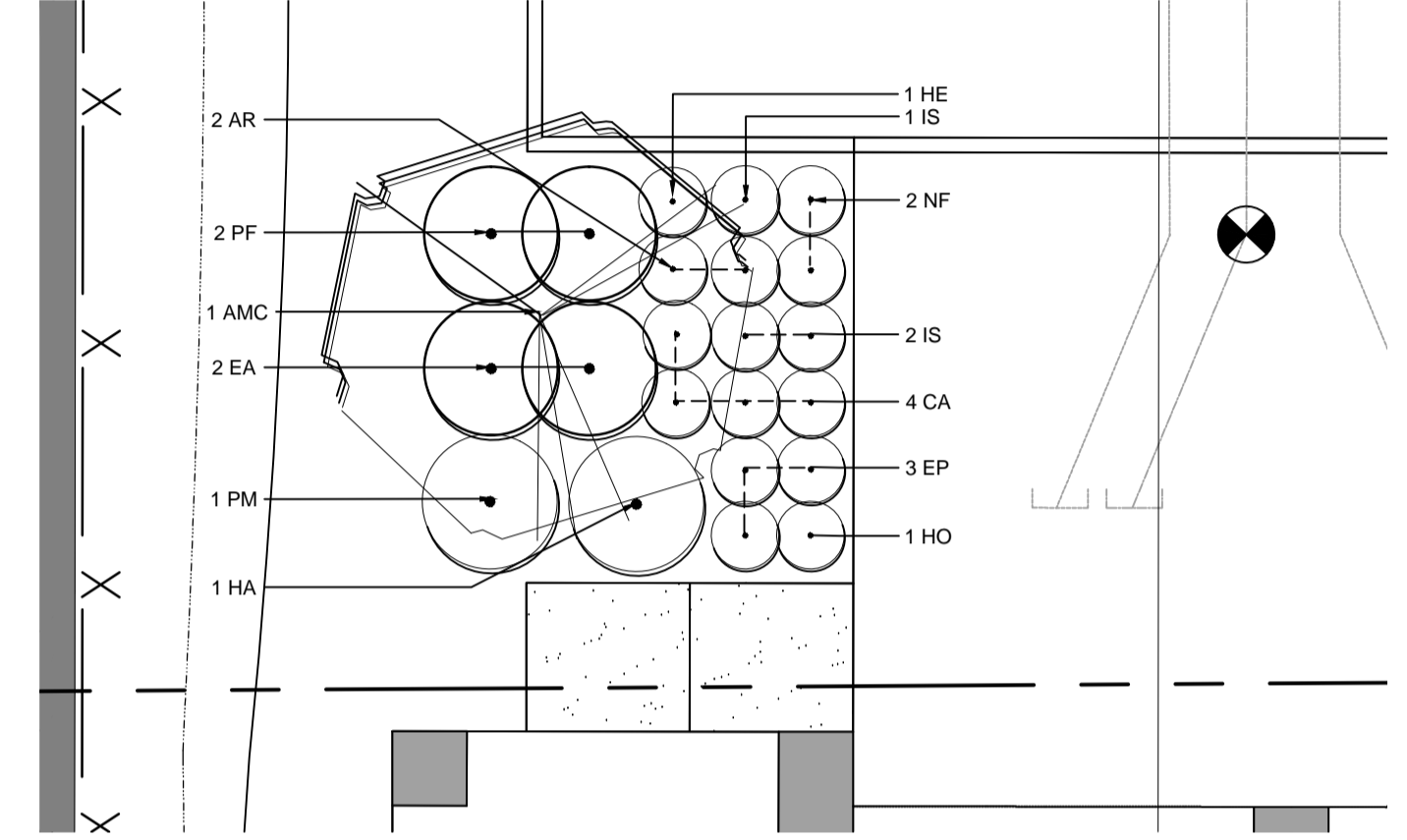


BACHMAN TERRACE



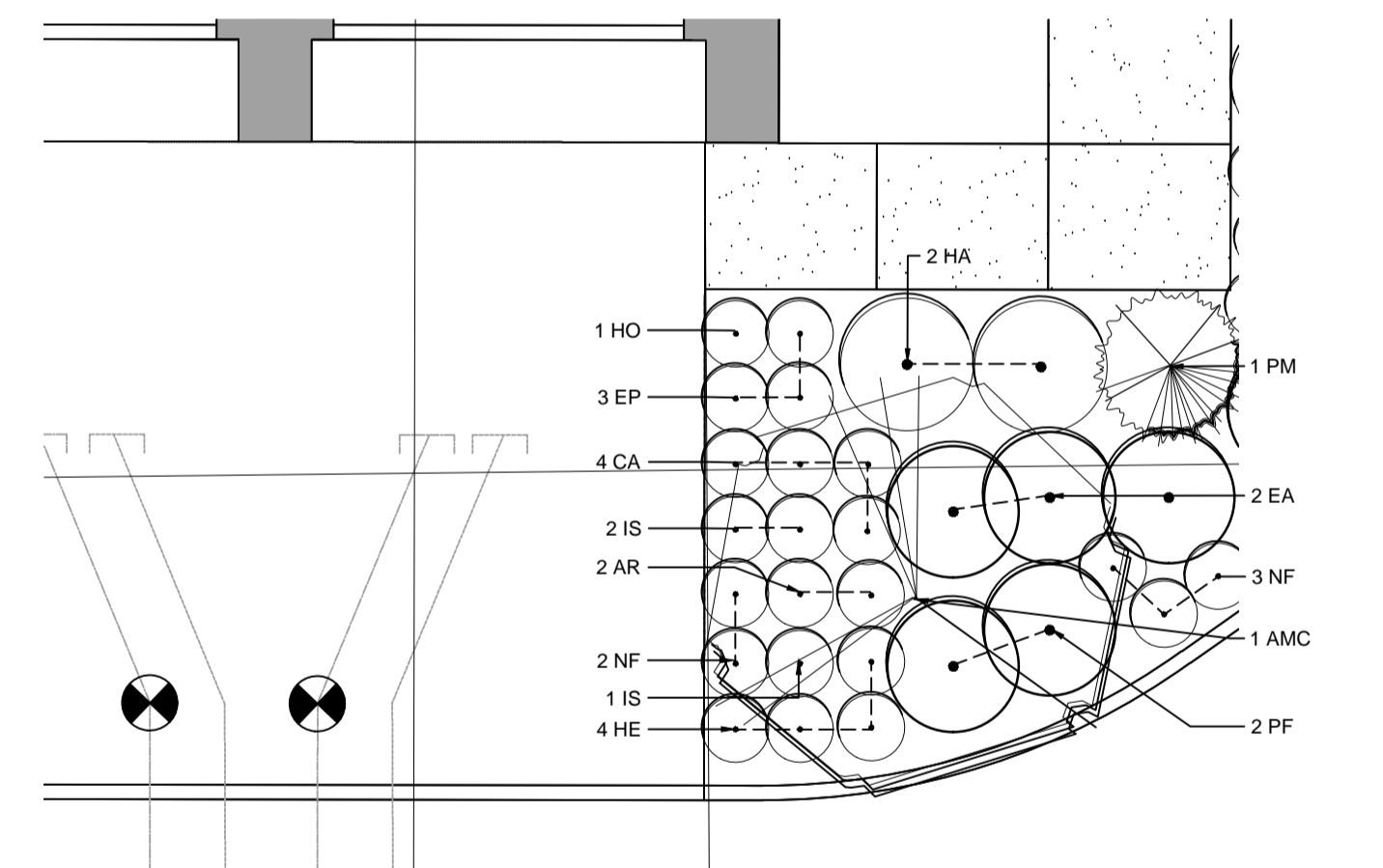
NOTE: MIRROR PLANTING WHERE REQUIRED SO THAT PERENNIAL BORDER FACES DRIVEWAY. THIS PROPOSED LANDSCAPE TEMPLATE WILL APPLY TO NINE (9) FRONT YARDS.

1 TYPICAL PLANTING BED ENLARGEMENT - DOUBLE UNIT 1:50



NOTE: MIRROR PLANTING WHERE REQUIRED SO THAT PERENNIAL BORDER FACES DRIVEWAY. THIS PROPOSED LANDSCAPE TEMPLATE WILL APPLY TO FIVE (5) FRONT YARDS.

2 TYPICAL PLANTING BED ENLARGEMENT - SINGLE/END UNIT 1:50



NOTE: MIRROR PLANTING WHERE REQUIRED SO THAT PERENNIAL BORDER FACES DRIVEWAY. THIS PROPOSED LANDSCAPE TEMPLATE WILL APPLY TO TWO (2) CORNER ENTRANCE UNITS.

3 TYPICAL PLANTING BED ENLARGEMENT - ENTRANCE UNIT 1:50

### Legend

- PROPOSED DECIDUOUS TREE
- PLANT CALLOUT #AA
- PROPOSED CONIFEROUS TREE
- PROPOSED SHRUB BED
- PROPOSED PERENNIAL BED
- EXISTING DECIDUOUS TREE
- EXISTING CONIFEROUS TREE
- H/S HYDRO SEEDING C/W 150mm TOPSOIL
- T/SOD SOD C/W 100mm TOPSOIL
- PROPOSED WOOD FENCE
- PROPOSED CHAINLINK FENCE
- PROPERTY LINE

Approved by the Ontario Municipal Board Per:

Board Secretary

Certified to be in conformity with the Ontario Municipal Board decision dated August 21, 2015, OMB File No. P141061

Felice Petti, P. Eng., Manager  
Development Review, Suburban Services

2. Issued for Site Plan Approval	BD	CG	15.10.27
1. Issued for Site Plan Approval	BD	CG	14.04.15
Issued	By	Appd.	YY.MM.DD
File Name: 160401069-LP.dwg	BD	CG	CG 14.03.06
	Dwn.	Chkd.	Dsgn. YY.MM.DD

Permit-Seal

Client/Project  
TEGA DEVELOPMENTS

19 & 23 BACHMAN TERRACE  
OTTAWA

Title  
LANDSCAPE PLAN

Project No. 160401069	Scale 1:200	0 2 4 6 8 10m
Drawing No. L102	Sheet 2 of 3	Revision 0

SYM	Qty	Botanical Name	Common Name	CAL (mm)	Size	Root	Remarks
<b>DECIDUOUS TREES:</b>							
AMC	24	Amelanchier canadensis	Downy Serviceberry	40		W.B.	
GT	9	Gleditsia triacanthos var. inermis 'Shademaster'	Shademaster Honeylocust	60		W.B.	
<b>CONIFEROUS TREES:</b>							
PG	9	Picea glauca	White Spruce		2400 ht	W.B.	
PN	5	Pinus nigra	Black Pine		2400 ht	W.B.	
PS	1	Pinus strobus	White Pine		2400 ht	W.B.	
TO	6	Thuja occidentalis	White Cedar		2400 ht	W.B.	
<b>DECIDUOUS SHRUBS:</b>							
EA	46	Euonymus alatus 'Compacta'	Dwarf Burning Bush		800 ht.	W.B.	Planted @ 900mm c/c
HA	27	Hydrangea arborescens 'Annabelle'	Annabelle Hydrangea		3 gal	Pot	Planted @ 900mm c/c
PF	61	Potentilla fruticosa 'Goldfinger'	Goldfinger Potentilla		800 ht.	Pot	Planted @ 900mm c/c
<b>CONIFEROUS SHRUBS:</b>							
PM	23	Pinus mugo 'Slowmound'	Slowmound Mugo Pine		800 dia.	Pot	
TOS	10	Thuja occidentalis 'Smaragd'	Emerald Cedar		1500 ht.	Pot	
<b>PERENNIALS:</b>							
AR	49	Astilbe x rosea 'Peach Blossom'	Peach Blossom Astilbe		1 gal	Pot	Planted @ 450mm c/c
CA	94	Calamagrostis x acutiflora 'Overdam'	Variegated Reed Grass		1 gal	Pot	Planted @ 450mm c/c
EP	69	Echinacea purpurea 'Magnus'	Magnus Coneflower		1 gal	Pot	Planted @ 450mm c/c
GM	117	Geranium macrorrhizum	Bigroot Cranesbill		1 gal	Pot	Planted @ 450mm c/c
HE	29	Hemerocallis 'Ruby Stella'	Ruby Stella Daylily		1 gal	Pot	Planted @ 450mm c/c
HO	23	Hosta fortunei 'Aureomarginata'	Golden Variegated Hosta		1 gal	Pot	Planted @ 450mm c/c
IS	55	Iris siberica	Siberian Iris		1 gal	Pot	Planted @ 450mm c/c
NF	52	Nepeta x faassenii 'Walker's Low'	Walker's Low Catmint		1 gal	Pot	Planted @ 450mm c/c

NOTE: FINAL LOCATION OF PROPOSED CONIFER TREES TO BE DETERMINED ONCE THE SITE IS DEVELOPED AND THE RETAINING WALL AND FENCE ARE INSTALLED UPON CONSULTATION WITH CITY PGM AND FORESTRY STAFF.

W:\Projects\160401069\160401069\_Landscape\design\landscape\160401069-LP.dwg  
2015/11/03 9:17 AM By: DB Viles, BCP