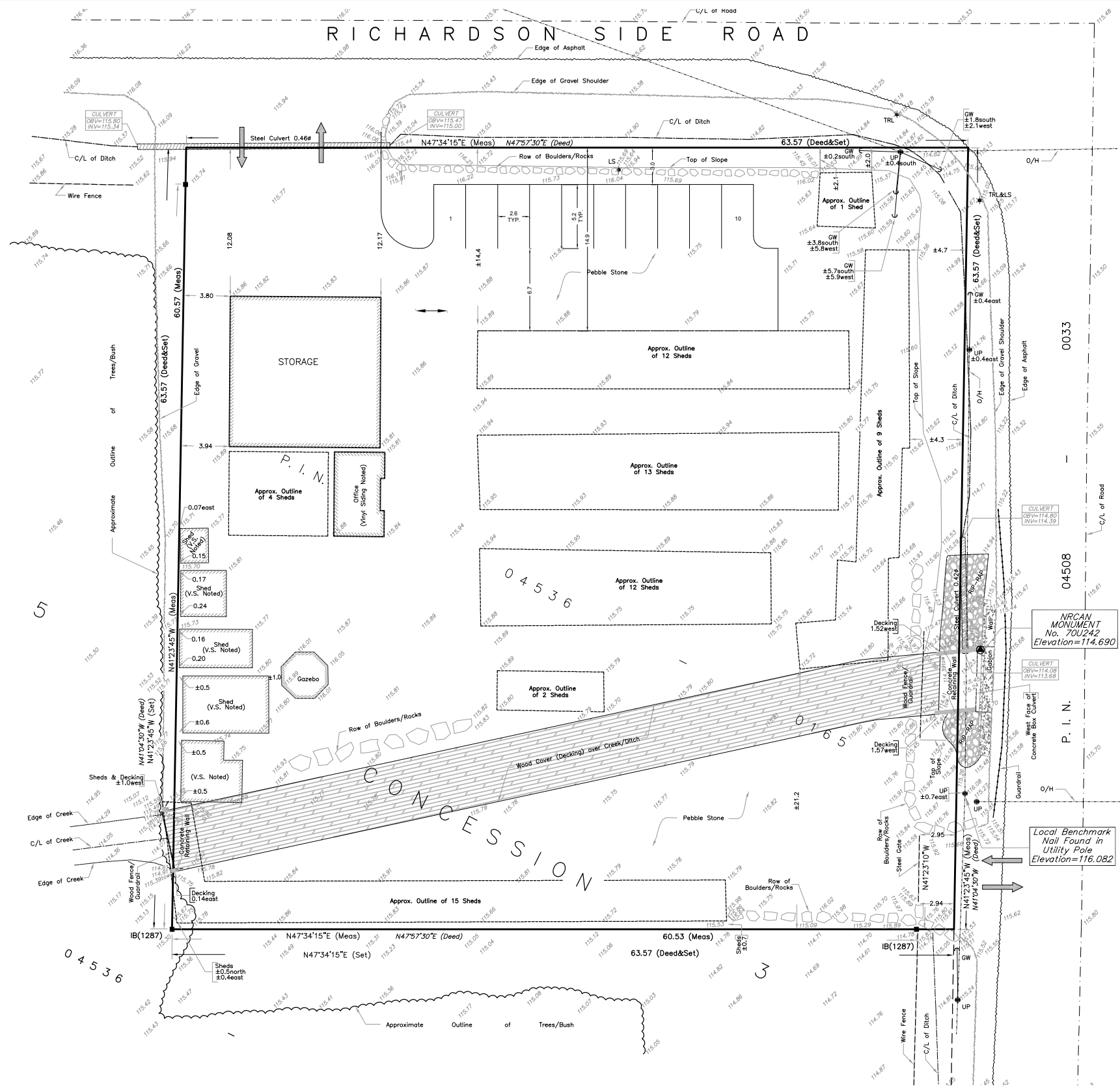


M:\2010\110040\CAD\Planning\Figures\110040-ExistingCond.dwg, Sheet 1.1x17 landscape, Jun 09, 2010 - 8:32am, krasnigi



2491 CARP ROAD ZONING CHART		
Zoning Mechanism	Required	Provided
Lot Area	4,000 m ²	4,000 m ²
Lot Width	30.0m	63.57m
Front Yard Setback	10.0m	12.08m
Interior Side Yard Setback	3.0m	3.8m
Corner Side Yard Setback	6.0m	46.8m
Rear Yard Setback	10.0m	34.8m
Building Height	11.0m	
Lot Coverage	25%	4.40%
Parking (Retail)	6 spaces (3.4/100m ² GFA)	10
Landscaped Buffer	3.0m	3.0m
Display Buildings		
- Front Yard Setback	10.0m	2.0m
- Interior Side Yard Setback	3.0m	1.0m
- Corner Side Yard Setback	6.0m	4.3m
- Rear Yard Setback	1.0m	1.0m

CARP ROAD (ROAD ALLOWANCE BETWEEN CONCESSIONS 2 AND 3)

REGIONAL ROAD No.

ORIGINAL SURVEY PREPARED BY:

FARLEY, SMITH & DENIS SURVEYING LTD.
 ONTARIO LAND SURVEYORS
 190 COLONNADE ROAD, OTTAWA, ONTARIO K2E 7J5 TEL.(613)727-8226 FAX.(613)727-1823

NOVATECH
ENGINEERING
CONSULTANTS LTD.
 ENGINEERS & PLANNERS
 Suite 200, 240 Michael Cowpland Drive
 Ottawa, Ontario, Canada
 K2M 1P6
 Telephone (613) 254-9643
 Facsimile (613) 254-5867
 Email: novainfo@novatech-eng.com

2491 CARP ROAD
 EXISTING CONDITIONS PLAN
 110040 MAY, 2010 110040-EC