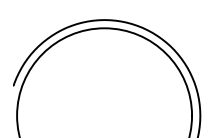
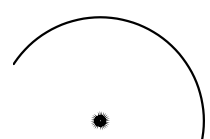


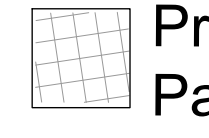
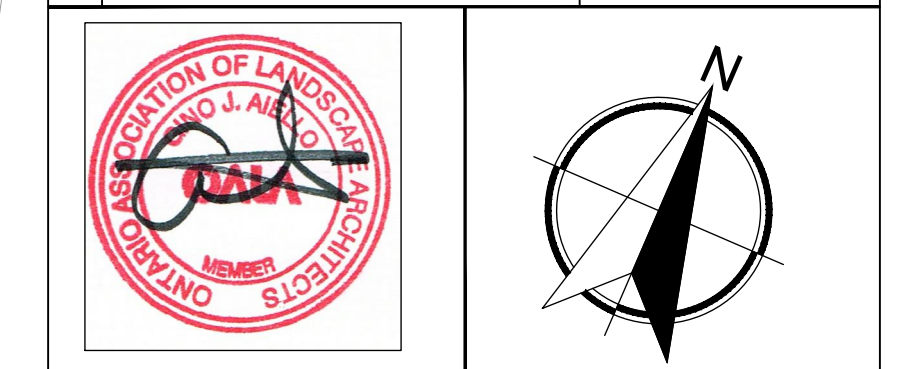


Drawing Remains the Property of/Copyright Reserved by Gino J. Aiello Landscape Architect. Do Not Use or Reproduce Without Approval of Gino J. Aiello.
NOT To Be Used For Construction Unless indicated by Revision: "FOR LANDSCAPE CONSTRUCTION".
Contractor is Responsible for Verification of Site
 Locations of all Utilities. Report any Discrepancies Between Site and Drawing Immediately to Gino J. Aiello. Do NOT Proceed Until Clarified.
 TURF AREAS TO BE SOD CW 150MM DEPTH TOPSOIL ON APPROVED SUBGRADE| SOD TO BE #1 GRADE TURFGRASS NURSERY SOD per NSGA - Fine Fescue/Kentucky Bluegrass Sod | PLANTING MIX TO BE APPROVED BY LANDSCAPE ARCHITECT | PLANT MATERIAL TO MEET CNLA STANDARDS/BE APPROVED BY LANDSCAPE ARCHITECT PRIOR TO PLANTING | ALL MATERIALS & WORK TO BE MAINTAINED UNTIL FINAL ACCEPTANCE. (MOWING TURF, WEEDING BEDS, WATERING TURF & PLANTS) & INCLUDE 1 YEAR WARRANTY FROM DATE OF FINAL ACCEPTANCE | PROVIDE WATERING OF ALL PLANT MATERIAL AS REQUIRED FOR PROPER ESTABLISHMENT, UNTIL END OF WARRANTY PERIOD | REFER TO CIVIL ENGINEER'S DRAWING FOR ELEVATIONS / GRADING|
 The Landscape Plan is to be read in conjunction with the grading, servicing, site and survey plan | Bare root material to be planted in season only | All plant material locations to be staked on site by the landscape contractor and checked by the landscape architect prior to planting | All trees to be preserved on or directly adjacent to the site will be protected | Plant material are to be installed a minimum of 3.0m away from any part of any hydro transformer, 3.0m corridor between a fire hydrant and the curb, a 2.5m radius beside or behind a fire hydrant, 2.0m from any servicing/utility line or structure |

-  Existing Tree to Remain
-  Proposed Deciduous Tree - Type TBD
-  Proposed Planting Bed c/w Shrubs TBD
-  Proposed Riverwash Stone On Filter Cloth
-  Proposed Pedestrian Pavement

2	ZONING AMENDMENT	MAY 21 2019
1	COORDINATION	MAY 2019
No.	Revision	Date



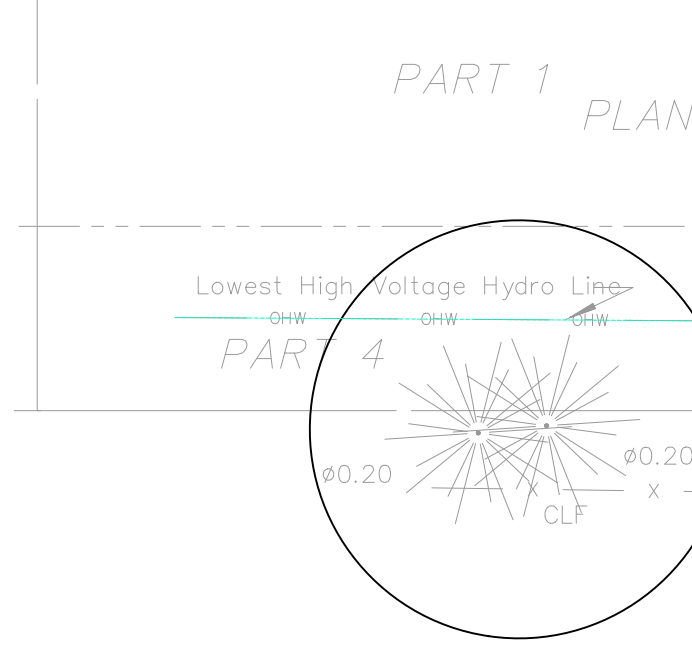
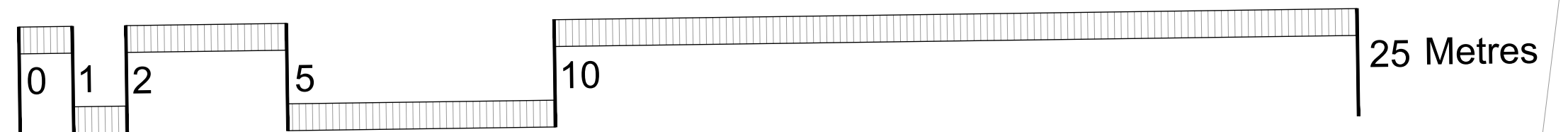
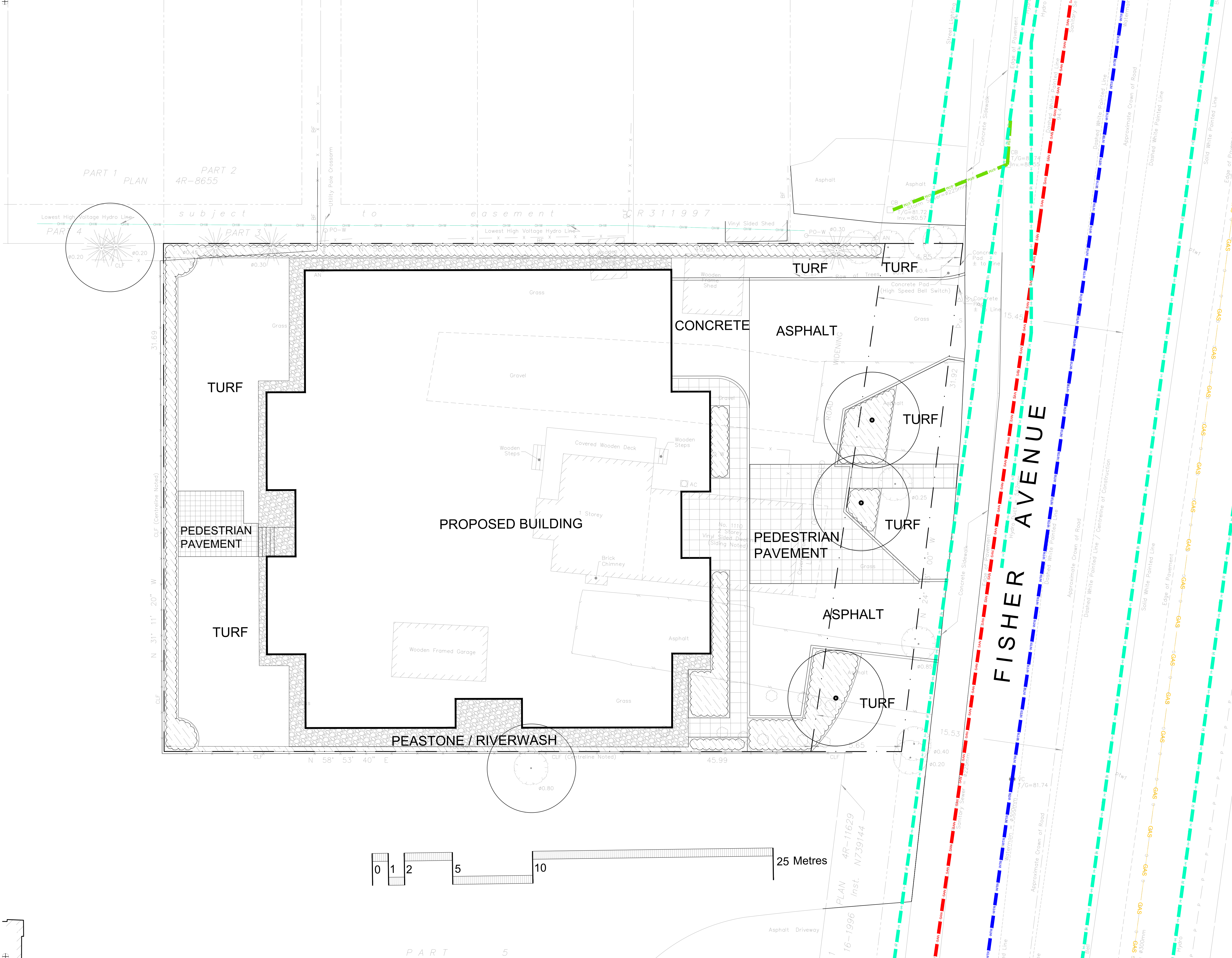
Property Owner **Prestige Design & Construction (FISHER) Ltd.**
 50 CAMELOT DRIVE NEPEAN K2G 5X8

Gino J. Aiello landscape architect www.GJALA.com
 Gino@GJALA.com (613) 852 1343
 110 Didsbury Road Unit # 9 | Ottawa Ontario | K2T 0C2

Project **PROPOSED 9 STOREY RESIDENTIAL BUILDING**
 1110 FISHER AVENUE OTTAWA K1Z 6P7

Drawing **Landscape Plan**

Date: **MAY 2019** Sheet Number
 Scale: **1:100**
 City of Ottawa
 Dwg - **#####** **L1** **D07-###**



PART 1 PLAN
 PART 2 4R-8655
 PART 3
 PART 4
 subject to easement R311997