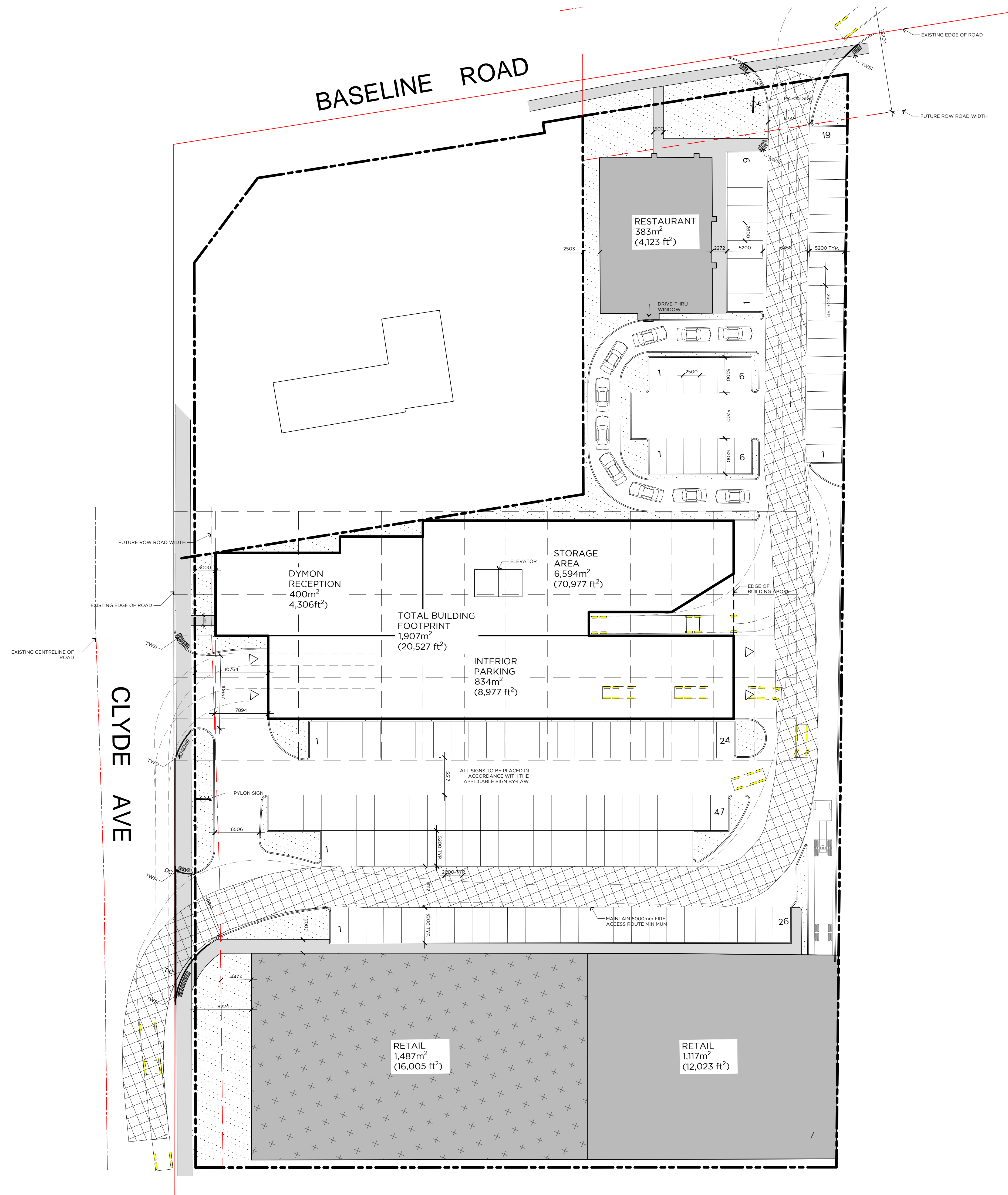


NOTES:
 BASE MAPPING INFORMATION WAS ACQUIRED FROM A SCREEN SHOT OF THE ON-LINE MAP SYSTEM. ALL DIMENSIONS AND AREAS RELATED TO THE BASE MAP SHOULD BE CONSIDERED APPROXIMATE.

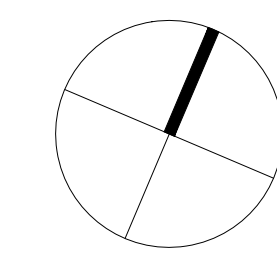
BUILDING STATISTICS

STAND ALONE RETAIL	398 m ² (4,284 sf)	
STAND ALONE RETAIL	1,117 m ² (12,023 sf)	
STAND ALONE RETAIL	1,487 m ² (16,005 sf)	
BUILDING FOOTPRINT	1,907 m² (20,527 sf)	
DYMON RECEPTION	400 m ² (4,306 sf)	5%
INTERIOR PARKING	834 m ² (8,977 sf)	11%
STORAGE AREA	6,594 m ² (70,977 sf)	84%
TOTAL AREA	7,828 m² (84,260 sf)	100%



16	FOR CONSULTATION	06/14/17	BL
15	FOR CONSULTATION	06/09/17	BL
1	FOR CLIENT REVIEW	08/30/16	GV
No.	REVISION	DATE	BY

FOTENN



PROJECT / LOCATION / PROJET / ENDROIT
DYMON SELF STORAGE
 1375 CLYDE
 OTTAWA, ONTARIO

DRAWING / DESSIN
PRELIMINARY SITE PLAN

DESIGNED BY / CONÇU PAR	G.V.	SHEET NO. / FEUILLE No.
DRAWN BY / DESSINÉ PAR	B.L.	D1
CHECKED BY / VÉRIFIÉ PAR	M.T.	
SCALE / ÉCHELLE	1:300	