

SCHEDULE				
AREA (Ha)	PART	LOT	CONCESSION	PIN
1.875	1	PART OF 22	9	PART OF 04449-0114

Part 1: Subject to easement, Inst. N614351.

I REQUIRE THIS PLAN TO BE DEPOSITED UNDER THE LAND TITLES ACT.
DATE: _____

PLAN 4R-
RECEIVED AND DEPOSITED
DATE: _____

EDWARD M. LANCASTER
ONTARIO LAND SURVEYOR

REPRESENTATIVE FOR
LAND REGISTRAR FOR THE
LAND TITLES DIVISION OF
OTTAWA-CARLETON NO. 4.

DRAFT PLAN OF SURVEY OF
PART OF LOT 22
CONCESSION 9
Geographic Township of Goulbourn
CITY OF OTTAWA
Surveyed by Annis, O'Sullivan, Vollebek Ltd.

Scale 1 : 750
30 22.5 15 7.5 0 15 30 Metres

Metric
DISTANCES AND COORDINATES SHOWN ON THIS PLAN
ARE IN METRES AND CAN BE CONVERTED TO FEET BY
DIVIDING BY 0.3048.

Surveyor's Certificate
I CERTIFY THAT :
1. This survey and plan are correct and in accordance with the Surveys Act, the Surveyors Act and the Land Titles Act and the regulations made under them.
2. The survey was completed on the ___ day of _____, 2017.

Date _____ Edward M. Lancaster
Ontario Land Surveyor

- Notes & Legend**
- Denotes Survey Monument Planted
 - Denotes Survey Monument Found
 - SIB Standard Iron Bar
 - SSIB Short Standard Iron Bar
 - IB Iron Bar
 - (WIT) Witness
 - (AOG) Annis, O'Sullivan, Vollebek Ltd.
 - Meas. Measured
 - (P1) (1287) Plan, July 24, 1991
 - (P2) Registered Plan 4M-930
 - (D1) Inst. N614351

Distances shown on this plan are ground distances and can be converted to grid distances by multiplying by the combined scale factor of 0.9999xx.

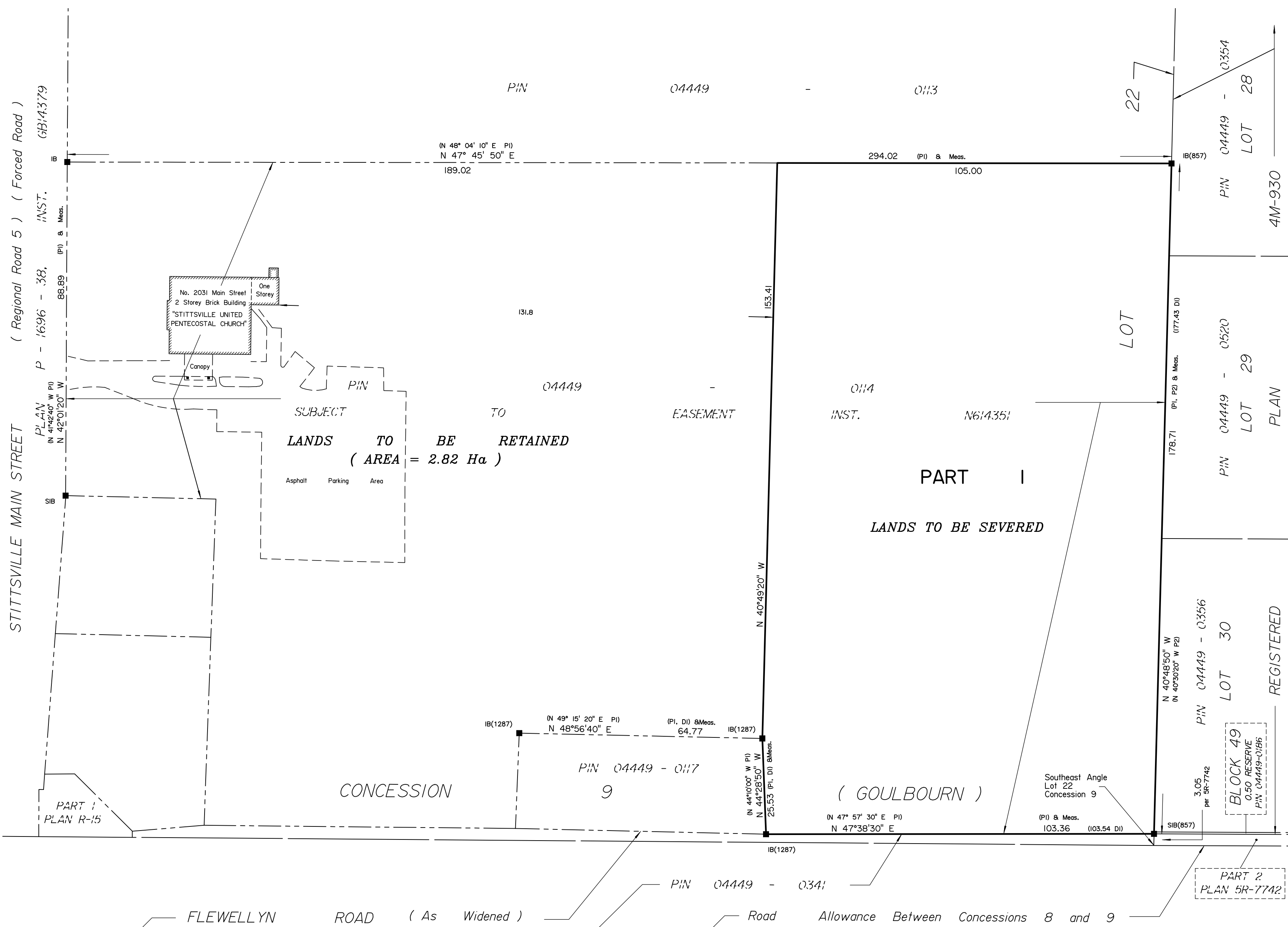
Bearings are grid, derived from Can-Net 2016 Real Time Network GPS observations on reference points A and B, shown hereon, having a bearing of Nxx°xx'xx"W and are referenced to Specified Control Points 01919750705 and 01919770923, MTM Zone 9 (76°30' West Longitude) NAD-83 (original).

Coordinates are derived from Can-Net 2016 Real Time Network GPS observations referenced to Specified Control Points 01919750705 and 01919770923, MTM Zone 9 (76°30' West Longitude) NAD-83 (original).

Coordinate values are to urban accuracy in accordance with O. Reg. 216/10.

01919750705	Northing	5016816.93	Easting	360806.84
01919770923	Northing	5013536.21	Easting	346275.92
Point A	Northing		Easting	
Point B	Northing		Easting	

Caution: Coordinates cannot, in themselves, be used to re-establish corners or boundaries shown on this plan.



ANNIS, O'SULLIVAN, VOLLEBEKK LTD.
14 Concourse Gate, Suite 500
Nepean, Ont. K2E 7S6
Phone: (613) 727-0850 / Fax: (613) 727-1079
Email: Nepean@aovltd.com

Ontario Land Surveyors Job No. 19640-17 Cavanagh P1 L1 22 C9 60 R D1