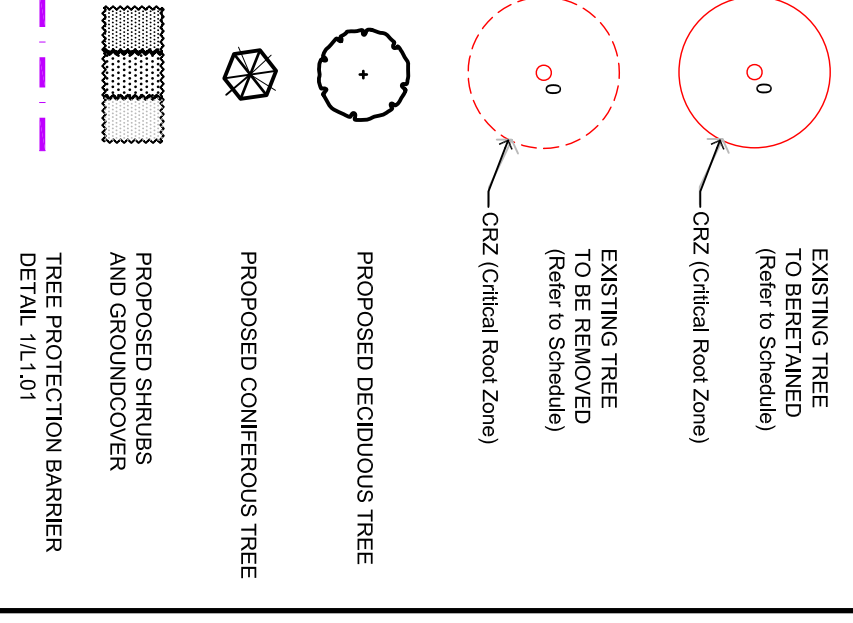
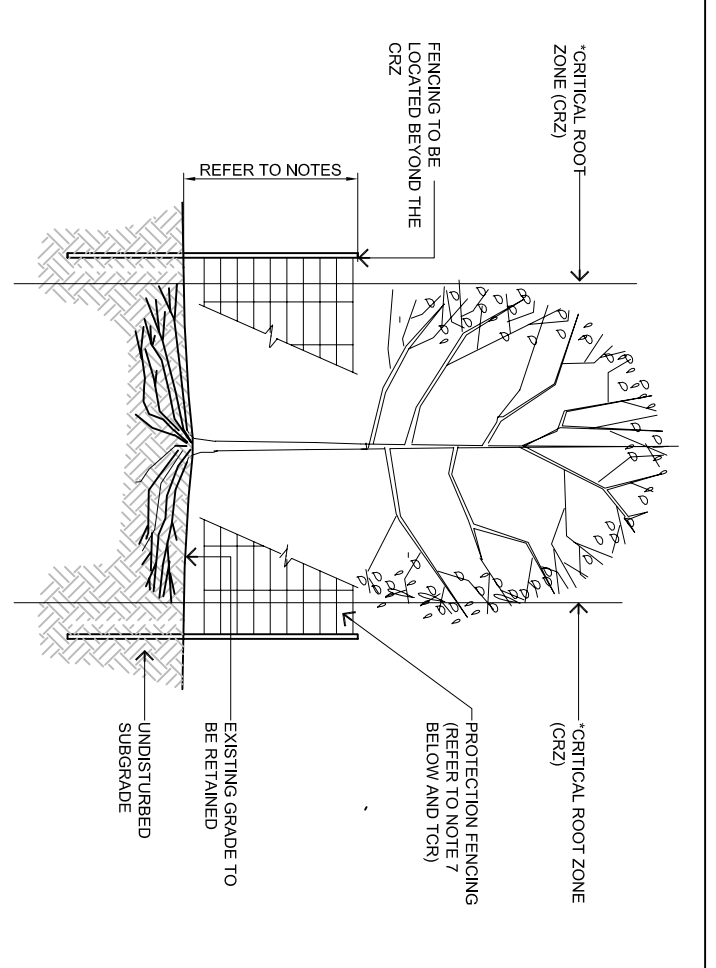
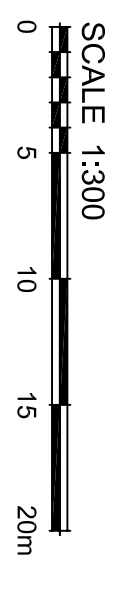
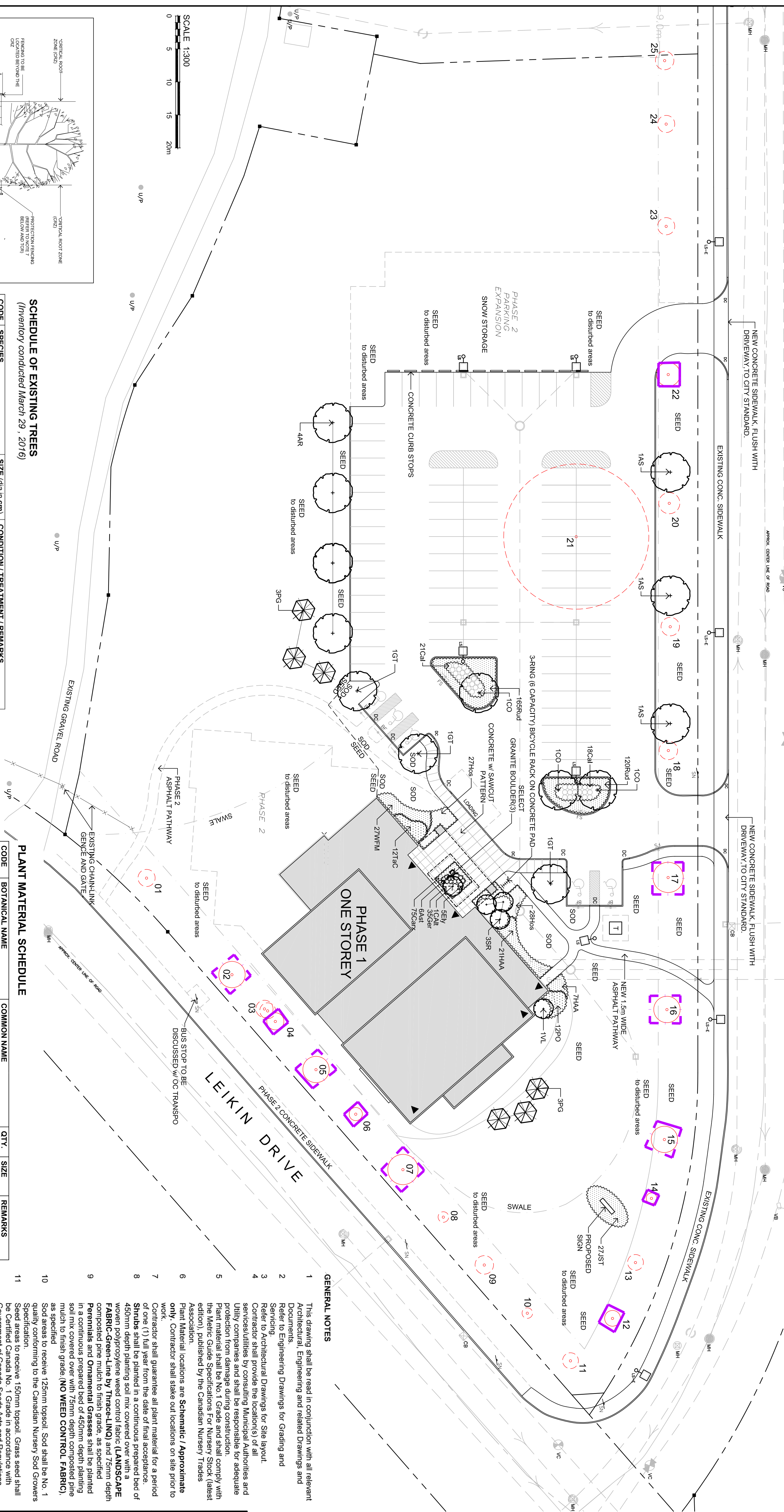


LEGEND / SYMBOL



BILL LEATHEM DRIVE



- NOTES:**
1. THE CRITICAL ROOT ZONE (CRZ) IS ESTABLISHED AS BEING FROM THE DISTANCE FROM THE TRUNK
 2. THE CRZ IS THE DISTANCE FROM THE TRUNK TO THE POINT WHERE THE ROOTS END
 3. THE CRZ IS THE DISTANCE FROM THE TRUNK TO THE POINT WHERE THE ROOTS END
 4. THE CRZ IS THE DISTANCE FROM THE TRUNK TO THE POINT WHERE THE ROOTS END
 5. THE CRZ IS THE DISTANCE FROM THE TRUNK TO THE POINT WHERE THE ROOTS END
 6. THE CRZ IS THE DISTANCE FROM THE TRUNK TO THE POINT WHERE THE ROOTS END
 7. THE CRZ IS THE DISTANCE FROM THE TRUNK TO THE POINT WHERE THE ROOTS END
 8. THE CRZ IS THE DISTANCE FROM THE TRUNK TO THE POINT WHERE THE ROOTS END
 9. THE CRZ IS THE DISTANCE FROM THE TRUNK TO THE POINT WHERE THE ROOTS END
 10. THE CRZ IS THE DISTANCE FROM THE TRUNK TO THE POINT WHERE THE ROOTS END
 11. THE CRZ IS THE DISTANCE FROM THE TRUNK TO THE POINT WHERE THE ROOTS END
 12. THE CRZ IS THE DISTANCE FROM THE TRUNK TO THE POINT WHERE THE ROOTS END
 13. THE CRZ IS THE DISTANCE FROM THE TRUNK TO THE POINT WHERE THE ROOTS END
 14. THE CRZ IS THE DISTANCE FROM THE TRUNK TO THE POINT WHERE THE ROOTS END
 15. THE CRZ IS THE DISTANCE FROM THE TRUNK TO THE POINT WHERE THE ROOTS END
 16. THE CRZ IS THE DISTANCE FROM THE TRUNK TO THE POINT WHERE THE ROOTS END
 17. THE CRZ IS THE DISTANCE FROM THE TRUNK TO THE POINT WHERE THE ROOTS END
 18. THE CRZ IS THE DISTANCE FROM THE TRUNK TO THE POINT WHERE THE ROOTS END
 19. THE CRZ IS THE DISTANCE FROM THE TRUNK TO THE POINT WHERE THE ROOTS END
 20. THE CRZ IS THE DISTANCE FROM THE TRUNK TO THE POINT WHERE THE ROOTS END
 21. THE CRZ IS THE DISTANCE FROM THE TRUNK TO THE POINT WHERE THE ROOTS END
 22. THE CRZ IS THE DISTANCE FROM THE TRUNK TO THE POINT WHERE THE ROOTS END
 23. THE CRZ IS THE DISTANCE FROM THE TRUNK TO THE POINT WHERE THE ROOTS END
 24. THE CRZ IS THE DISTANCE FROM THE TRUNK TO THE POINT WHERE THE ROOTS END
 25. THE CRZ IS THE DISTANCE FROM THE TRUNK TO THE POINT WHERE THE ROOTS END

SCHEDULE OF EXISTING TREES
(Inventory conducted March 29, 2016)

CODE	SPECIES	SIZE (dia in cm)	CONDITION / TREATMENT / REMARKS
01	Ash	13	dead / remove
02	Colorado Spruce	20	good / retain / protect
03	Manitoba Maple (double-stem)	13/12	good / retain / remove to promote growth of adjacent
04	Sugar Maple	13	good / retain / protect
05	Colorado Spruce	20	good / retain / protect
06	Colorado Spruce	23	good / retain / protect
07	Ash	8	dead / remove /
08	Ash	14	dead / remove /
09	Ash	8	dead / remove /
10	Ash	10	dead / remove /
11	Ash	12	good / retain / protect
12	Sugar Maple	12	good / retain / protect
13	Ash	9	poor / retain / protect
14	Sugar Maple	20	good / retain / protect
15	Austrian Pine	20	good / retain / protect
16	Austrian Pine	23	good / retain / protect
17	Austrian Pine	23	good / retain / protect
18	Ash	14	dead / remove /
19	Ash	16	dead / remove /
20	Ash	16	dead / EAB infected / top crown dying / remove /
21	Ash	16	dead / remove /
22	Colorado Spruce	20	good / retain / protect
23	Ash	13	dead / remove /
24	Ash	13	dead / remove /
25	Ash	14	dead / remove /

PLANT MATERIAL SCHEDULE

CODE	BOTANICAL NAME	COMMON NAME	QTY.	SIZE	REMARKS
AR	AGERER RUBRUM	RED MAPLE	4	60mm cal	B&B, single stem
AS	AGER SACCHARUM	SUGAR MAPLE	3	60mm cal	B&B, single stem
CO	GELTIS OCCIDENTALIS	COMMON HONKBERRY	3	60mm cal	B&B, single stem
GT	SKUTLINA TRIACANTHOS	SKYLINE HONEYLOCUST	3	60mm cal	B&B, single stem
QR	QUERCUS RUBRA	RED OAK	1	60mm cal	B&B, single stem
PG	PICEA GLAUCA	WHITE SPRUCE	6	180mm ht.	B&B
CG	CORNUS ALTERNIFOLIA	PAGODA DOGWOOD	1	150mm ht.	B&B, multi-stem
HA	ANNABELLE HYDRANGEA	ANNABELLE HYDRANGEA	28	50cm ht.	pottd., 100cm o/c
PO	PHYSOCARPUS OPLIFOLIUS	COMMON NINEBARK	12	50cm ht.	pottd., 100cm o/c
SR	STRANGLER FICUS	JAPANESE FRET LILAC	1	150cm ht.	B&B, multi-stem
VI	VIBURNUM LENTAGO	NANNYBERRY	3	50cm cal	B&B, multi-stem
WI	WIGELIA FLORIDA MINUET	MINUET WIGELIA	27	50cm ht.	pottd., 50cm o/c
ST	JUNIPERUS SIBIRICA	TAMARIX JUNIFER	27	50cm spr	pottd., 100cm o/c
TAC	TAXUS CANADENSIS	CANADA VEV	12	50cm ht.	pottd., 100cm o/c
AS	ASTER divaricatus	WHITE WOODLAND ASTER	6	15cm pot.	plant 50cm o/c
GE	GERANIUM maculatum	WILD GERANIUM	55	15cm pot.	plant 30cm o/c
HO	HOSTA 'Big Daddy'	Big Daddy HOSTA	55	15cm pot.	plant 75cm o/c
RU	RUBRO-COCA 'Ina'	BROWN-YEDED SUSAN	285	15cm pot.	plant 50cm o/c
OR	ORNAMENTAL GRASSES / SEDGES	KARL FORSTERER REED GRASS	39	15cm pot.	plant 75cm o/c
CA	CAREX edburna	IVORY SEDGE	75	15cm pot.	plant 30cm o/c
EIV	ELIVALS Divinix	BOTTLEBRUSH GRASS	5	15cm pot.	plant 60cm o/c

GENERAL NOTES

1. This drawing shall be read in conjunction with all relevant Architectural, Engineering and related Drawings and Documents.
2. Refer to Engineering Drawings for Grading and Servicing.
3. Refer to Architectural Drawings for Site layout.
4. Note to All: All work shall be done in accordance with the specifications of the Municipality of North York and the Municipality of York.
5. Utility companies and shall be responsible for adequate protection from damage during construction.
6. Plant material shall be No. 1 Grade and shall comply with the Metric Guide Specifications For Nursery Stock (latest edition), published by the Canadian Nursery Trades Association.
7. Plant Material locations are Schematic / Approximate only. Contractor shall stake out locations on site prior to work.
8. Contractor shall guarantee all plant material for a period of one (1) full year from the date of final acceptance.
9. Shrubs shall be planted in a continuous prepared bed of 450mm depth planting soil mix covered over with a woven polypropylene weed control fabric (LANDSCAPE FABRIC-Green Line by Thrace-LINO) and 75mm depth Permalite and Ornamental Grasses shall be planted in a continuous prepared bed of 450mm depth planting soil mix covered over with 75mm depth composted pine mulch to finish grade. (NO WEED CONTROL FABRIC), as specified.
10. Sod areas to receive 125mm topsoil. Sod shall be No. 1 quality conforming to the Canadian Nursery Sod Growers Specification.
11. Seed areas to receive 150mm topsoil. Grass seed shall be Certified Canada No. 1 Grade in accordance with Government of Canada Seeds Act and Regulations.
12. Replant all areas damaged or disturbed beyond the written approval from the Consultant.
13. Plant Material substitutions shall not be permitted without written approval from the Consultant.
14. Install fencing to protect existing trees to be retained. (Refer to drawing for details.)

Contractor shall check and verify all dimensions on site and report all errors and/or omissions to the Consultant.

Do not scale Drawing.

Copyright reserved. This Drawing is the exclusive property of Levstek Consultants Inc. and shall not be used without consent.

LEVSTEK CONSULTANTS
A. N. D. S. C. A. R. E. B. R. E. S. T. R. A. T. E. R. S.
1971 HEBB CREEK DRIVE, TORONTO, ONTARIO M2A 2W8
416-491-8888

ASSOCIATION OF LANDSCAPE ARCHITECTS
REGISTERED PROFESSIONAL ARCHITECTS

Project: **SALVATION ARMY CHURCH BARRHAVEN**
102 BILL LEATHEM DRIVE

Drawing Title: **LANDSCAPE PLAN PHASE 1**

Client: **SA**

Design: **MGB**

Date: **MAR 2016**

Scale: **1:300**

Project No.: **1114**

Drawing No.: **L1.01**