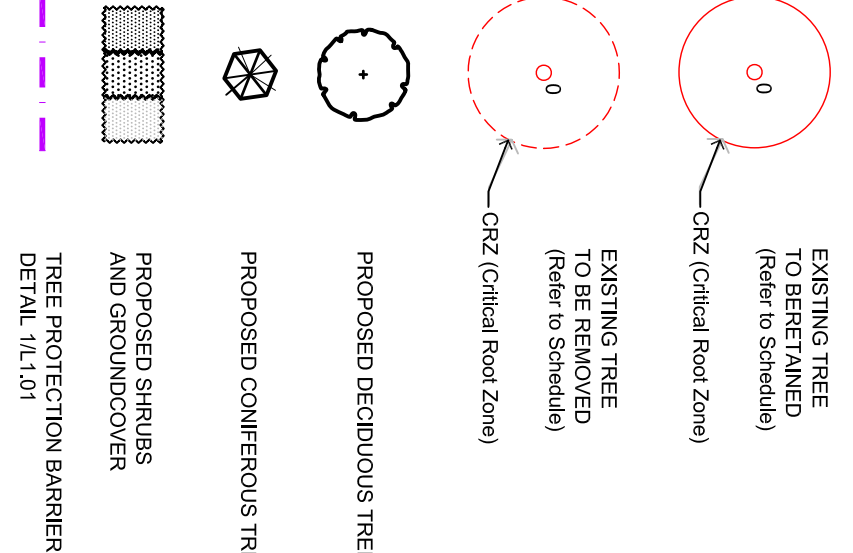
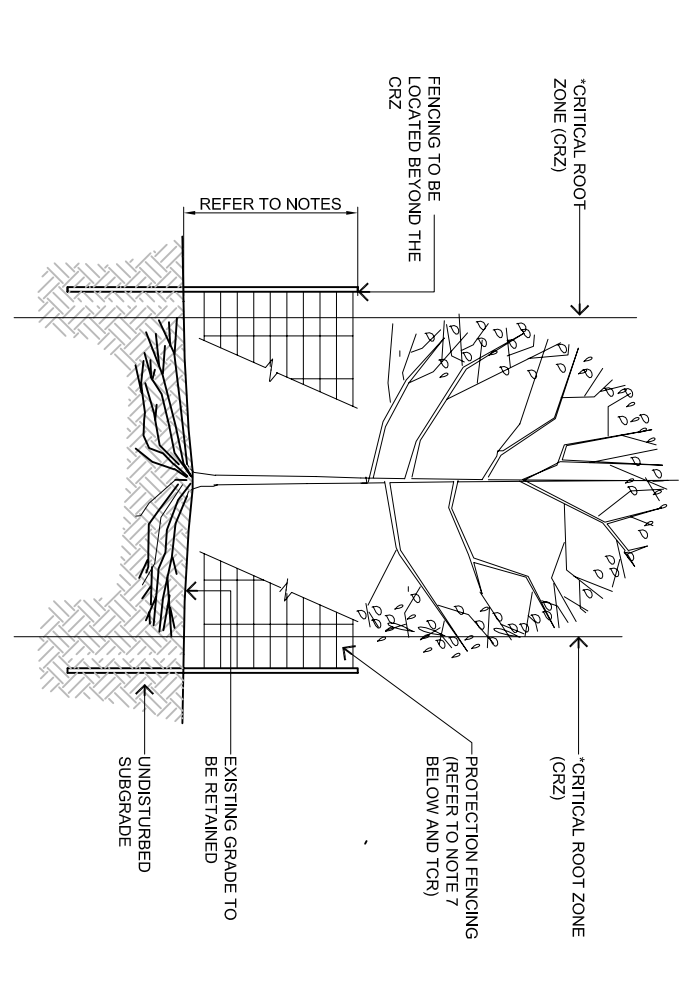
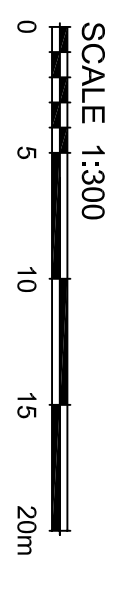
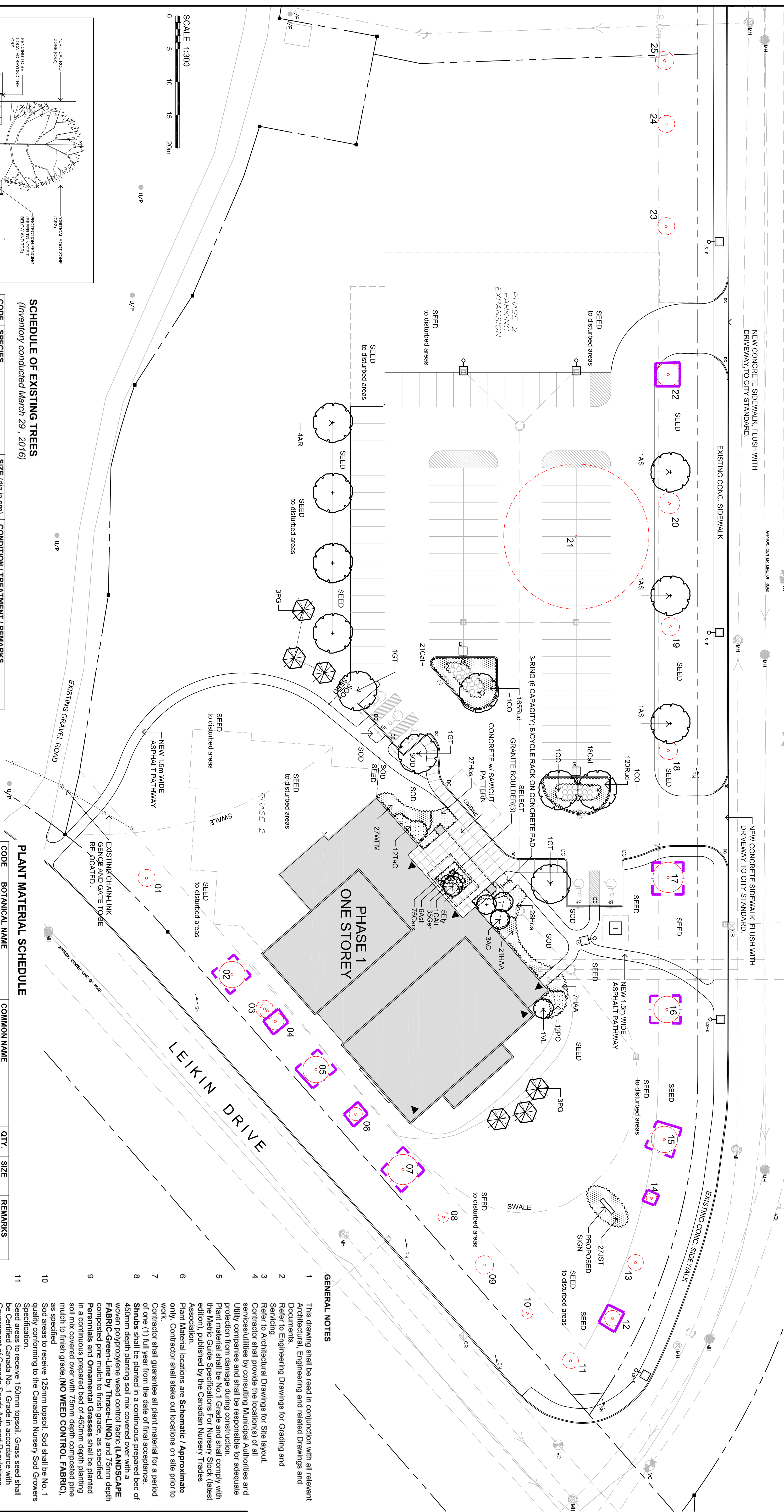


LEGEND / SYMBOL



BILL LEATHEM DRIVE



- NOTES:**
1. THE CRITICAL ROOT ZONE (CRZ) IS ESTABLISHED AS BEING THE DISTANCE FROM THE TRUNK...
 2. THE CRZ IS THE DISTANCE FROM THE TRUNK TO THE POINT WHERE THE ROOTS ARE CONCENTRATED...
 3. THE CRZ IS THE DISTANCE FROM THE TRUNK TO THE POINT WHERE THE ROOTS ARE CONCENTRATED...
 4. THE CRZ IS THE DISTANCE FROM THE TRUNK TO THE POINT WHERE THE ROOTS ARE CONCENTRATED...
 5. THE CRZ IS THE DISTANCE FROM THE TRUNK TO THE POINT WHERE THE ROOTS ARE CONCENTRATED...
 6. THE CRZ IS THE DISTANCE FROM THE TRUNK TO THE POINT WHERE THE ROOTS ARE CONCENTRATED...
 7. THE CRZ IS THE DISTANCE FROM THE TRUNK TO THE POINT WHERE THE ROOTS ARE CONCENTRATED...
 8. THE CRZ IS THE DISTANCE FROM THE TRUNK TO THE POINT WHERE THE ROOTS ARE CONCENTRATED...
 9. THE CRZ IS THE DISTANCE FROM THE TRUNK TO THE POINT WHERE THE ROOTS ARE CONCENTRATED...
 10. THE CRZ IS THE DISTANCE FROM THE TRUNK TO THE POINT WHERE THE ROOTS ARE CONCENTRATED...
 11. THE CRZ IS THE DISTANCE FROM THE TRUNK TO THE POINT WHERE THE ROOTS ARE CONCENTRATED...
 12. THE CRZ IS THE DISTANCE FROM THE TRUNK TO THE POINT WHERE THE ROOTS ARE CONCENTRATED...
 13. THE CRZ IS THE DISTANCE FROM THE TRUNK TO THE POINT WHERE THE ROOTS ARE CONCENTRATED...
 14. THE CRZ IS THE DISTANCE FROM THE TRUNK TO THE POINT WHERE THE ROOTS ARE CONCENTRATED...
 15. THE CRZ IS THE DISTANCE FROM THE TRUNK TO THE POINT WHERE THE ROOTS ARE CONCENTRATED...
 16. THE CRZ IS THE DISTANCE FROM THE TRUNK TO THE POINT WHERE THE ROOTS ARE CONCENTRATED...
 17. THE CRZ IS THE DISTANCE FROM THE TRUNK TO THE POINT WHERE THE ROOTS ARE CONCENTRATED...
 18. THE CRZ IS THE DISTANCE FROM THE TRUNK TO THE POINT WHERE THE ROOTS ARE CONCENTRATED...
 19. THE CRZ IS THE DISTANCE FROM THE TRUNK TO THE POINT WHERE THE ROOTS ARE CONCENTRATED...
 20. THE CRZ IS THE DISTANCE FROM THE TRUNK TO THE POINT WHERE THE ROOTS ARE CONCENTRATED...
 21. THE CRZ IS THE DISTANCE FROM THE TRUNK TO THE POINT WHERE THE ROOTS ARE CONCENTRATED...
 22. THE CRZ IS THE DISTANCE FROM THE TRUNK TO THE POINT WHERE THE ROOTS ARE CONCENTRATED...
 23. THE CRZ IS THE DISTANCE FROM THE TRUNK TO THE POINT WHERE THE ROOTS ARE CONCENTRATED...
 24. THE CRZ IS THE DISTANCE FROM THE TRUNK TO THE POINT WHERE THE ROOTS ARE CONCENTRATED...
 25. THE CRZ IS THE DISTANCE FROM THE TRUNK TO THE POINT WHERE THE ROOTS ARE CONCENTRATED...

SCHEDULE OF EXISTING TREES
(Inventory conducted March 29, 2016)

CODE	SPECIES	SIZE (dia in cm)	CONDITION / TREATMENT / REMARKS
01	Ash	13	dead / remove
02	Colorado Spruce	20	good / retain / protect
03	Manitoba Maple (double-stem)	13/12	good / retain / remove to promote growth of adjacent
04	Sugar Maple	13	good / retain / protect
05	Colorado Spruce	20	good / retain / protect
06	Colorado Spruce	10	good / retain / protect
07	Ash	8	dead / remove /
08	Ash	14	dead / remove /
09	Ash	8	dead / remove /
10	Ash	14	dead / remove /
11	Ash	12	good / retain / protect
12	Sugar Maple	12	good / retain / protect
13	Ash	9	poor / retain / protect
14	Sugar Maple	20	good / retain / protect
15	Austrian Pine	20	good / retain / protect
16	Austrian Pine	23	good / retain / protect
17	Austrian Pine	23	good / retain / protect
18	Ash	14	dead / remove /
19	Ash	16	dead / remove /
20	Ash	16	dead / remove /
21	Ash	16	dead / remove /
22	Colorado Spruce	20	good / retain / protect
23	Ash	13	dead / remove /
24	Ash	13	dead / remove /
25	Ash	14	dead / remove /

PLANT MATERIAL SCHEDULE

CODE	BOTANICAL NAME	COMMON NAME	QTY.	SIZE	REMARKS
AR	AGERER RUBRUM	RED MAPLE	4	60mm cal	B&B, single stem
AS	AGELIS SACCCHARUM	SUGAR MAPLE	3	60mm cal	B&B, single stem
CO	GELTIS OCCIDENTALIS	COMMON HICKBERRY	3	60mm cal	B&B, single stem
GT	SKYLINE VIA TRIACANTHOS	SKYLINE HONEYLOCUST	3	60mm cal	B&B, single stem
QR	QUERCUS RUBRA	RED OAK	1	60mm cal	B&B, single stem
PG	PICEA GLAUCA	WHITE SPRUCE	6	180cm ht.	B&B
AC	AMELANCHIER CANADENSIS	DOVY SERVICEBERRY	3	150cm ht.	B&B, multi-stem
CA	CORNUS AL TERRIFOLIA	PANCOGA DOGWOOD	1	150cm ht.	B&B, multi-stem
HA	AMMABELLE	AMMABELLE HYDRANGEA	28	50cm ht.	poiled, 100cm o/c
PO	PHYSOCARPUS OPLILIFOLIUS	COMMON NINEBARK	12	50cm ht.	poiled, 100cm o/c
VI	VIBURNUM LENTAGO	NANNYBERRY	1	150cm ht.	B&B, multi-stem
WI	WIGELIA FLORIDA MINULET	MINULET WIGELIA	27	50cm spr	poiled, 50cm o/c
JA	JUNIPERUS SIBIRICA	TAMARISK JUNIFER	27	50cm spr	poiled, 100cm o/c
TAC	TAXUS CANADENSIS	CANADA VEW	12	50cm ht.	poiled, 100cm o/c
AS	ASTER divaricatus	WHITE WOODLAND ASTER	6	15cm pot.	plant 50cm o/c
GE	GERANIUM maculatum	WILD GERANIUM	35	15cm pot.	plant 30cm o/c
HO	HOSTA Big Daddy	Big Daddy HOSTA	55	15cm pot.	plant 30cm o/c
RH	RUBRO-COCA trita	BROWN-EYED SUSAN	285	15cm pot.	plant 50cm o/c
OR	ORNAMENTAL GRASSES / SEDGES	KARL FORSTERER REED GRASS	39	15cm pot.	plant 75cm o/c
CA	CAREX edulis	IVORY SEDGE	75	15cm pot.	plant 30cm o/c
EIV	ELIVALS Divinix	BOTTLEBRUSH GRASS	5	15cm pot.	plant 60cm o/c

GENERAL NOTES

1. This drawing shall be read in conjunction with all relevant Architectural, Engineering and related Drawings and Documents.
2. Refer to Engineering Drawings for Grading and Servicing.
3. Refer to Architectural Drawings for Site layout.
4. Contractor shall provide all necessary Municipal and Utility services and shall be responsible for adequate protection from damage during construction.
5. Plant Material shall be No. 1 Grade and shall comply with the Metric Guide Specifications For Nursery Stock (latest edition), published by the Canadian Nursery Trades Association.
6. Plant Material locations are Schematic / Approximate only. Contractor shall stake out locations on site prior to work.
7. Contractor shall guarantee all plant material for a period of one (1) full year from the date of final acceptance.
8. Shrubs shall be planted in a continuous prepared bed of 450mm depth planting soil mix covered over with a woven polypropylene weed control fabric (LANDSCAPE FABRIC-Green Line by Thrace-LINO) and 75mm depth Permaline and Ornamental Grasses shall be planted in a continuous prepared bed of 450mm depth planting soil mix covered over with 75mm depth composted pine mulch to finish grade. (NO WEED CONTROL FABRIC), as specified.
9. Sod areas to receive 125mm topsoil. Sod shall be No. 1 quality conforming to the Canadian Nursery Sod Growers Specification.
10. Seed areas to receive 150mm topsoil. Grass seed shall be Certified Canada No. 1 Grade in accordance with Government of Canada Seeds Act and Regulations. Retain all areas damaged or disturbed beyond the Plant Material substitutions shall not be permitted without written approval from the Consultant.
11. Provide protection for existing trees to be retained. Install fencing to drip-line (canopy) of each tree or grouping of trees. (if close together). No excavation, filling, storage of materials, disposal of chemicals or waste, vehicle traffic or other activity which could cause root zone disturbance or compaction, shall take place within the protected area.
12. Where limbs of trees are removed to accommodate construction work, they shall be done in accordance with accepted arboricultural practice.
13. Where root systems become exposed due to excavation, carefully trim damaged roots and provide temporary mulch until backfill is undertaken. Keep roots moist at all times.
14. Construct walls or retaining walls if grades around trees are to be modified. Root feed all existing trees after construction.
15. Contractor shall advise Consultant a minimum of 48hrs. prior to proceeding landscape work and any required Field Reviews.
16. THIS PLAN HAS BEEN PREPARED FOR MUNICIPAL SITE PLAN APPROVAL ONLY AND MAY NOT BE USED FOR ANY OTHER PURPOSE.

Contractor shall stake out and verify all dimensions on site and report all errors and/or omissions to the Consultant.

Do not scale Drawing.

Copyright reserved. This Drawing is the exclusive property of Levstek Consultants Inc.

Do not reuse without consent.

LEVSTEK CONSULTANTS
A. N. D. S. C. A. R. E. B. R. E. S. T. R. A. T. E. S.
1971 HERRY CREEK RD. OLIVER, ALBERTA T0A 2W8
403.463.8888

ASSOCIATION OF LANDSCAPE ARCHITECTS
CMAA
REGISTERED PROFESSIONAL ARCHITECTS

Project: **SALVATION ARMY CHURCH BARRHAVEN 102 BILL LEATHEM DRIVE**

Drawing Title: **LANDSCAPE PLAN PHASE 1**

Client: **SALVATION ARMY CHURCH BARRHAVEN**

Design: **MGB**

Date: **MAR 2016**

Scale: **1:300**

Project No.: **1114**

Drawing No.: **L1.01**