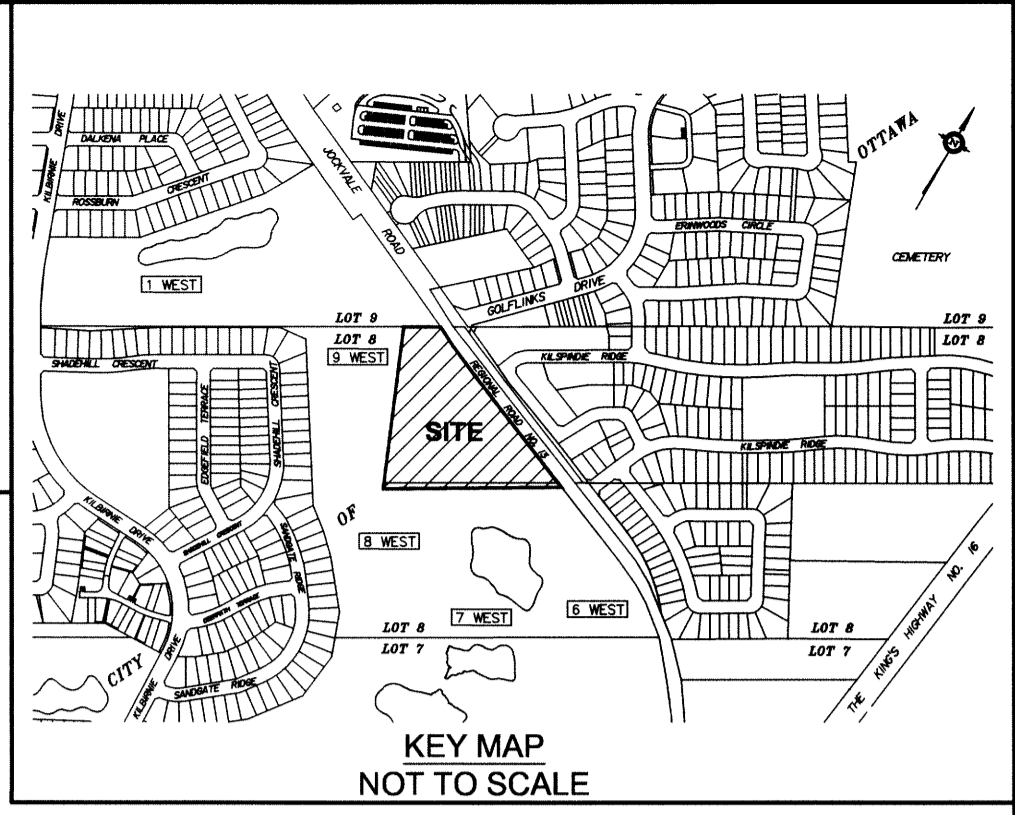




SUBJECT TO THE CONDITIONS, IF ANY, SET FORTH IN OUR LETTER DATED \_\_\_\_\_

THIS DRAFT PLAN IS APPROVED BY THE CITY OF OTTAWA UNDER SECTION 51 OF THE PLANNING ACT. THIS \_\_\_\_\_ DAY OF \_\_\_\_\_

FELICE PETTI, P. ENG., MANAGER  
DEVELOPMENT REVIEW, SUBURBAN SERVICES  
PLANNING AND GROWTH MANAGEMENT DEPARTMENT  
CITY OF OTTAWA



DRAFT PLAN OF SUBDIVISION OF  
**PART OF LOT 8  
CONCESSION 2 ( RIDEAU FRONT )**  
Geographic Township of Nepean  
**CITY OF OTTAWA**  
Prepared by Annis , O'Sullivan , Vollebakk Ltd.

Scale 1 : 500

Metric  
DISTANCES SHOWN ON THIS PLAN ARE IN METRES AND  
CAN BE CONVERTED TO FEET BY DIVIDING BY 0.3048

**SURVEYOR'S CERTIFICATE**

I CERTIFY THAT:  
The boundaries of the lands to be subdivided and their relationship to adjoining lands have been accurately and correctly shown.

April 22 / 2016 *Edward M. Lancaster*  
Date Edward M. Lancaster  
ONTARIO LAND SURVEYOR

**OWNER'S CERTIFICATE**

This is to certify that I am the agent for the owners of the lands to be subdivided and that this plan was prepared in accordance with my instructions.

Date \_\_\_\_\_  
Uniform Urban Developments  
I have the authority to bind the corporation

**ADDITIONAL INFORMATION REQUIRED UNDER SECTION 51-17 OF THE PLANNING ACT**

(a) see plan  
(b) see plan  
(c) see plan  
(d) multi-family residential housing, park, openspace  
(e) see plan  
(f) see plan  
(g) see plan  
(h) City of Ottawa  
(i) see soils report  
(j) see plan  
(k) sanitary, storm sewers, municipal water, bell, hydro, cable and gas to be available  
(l) see plan

**ANNIS, O'SULLIVAN, VOLLEBEKK LTD.**  
14 Concourse Gate, Suite 500  
Nepean, Ont. K2E 7S6  
Phone: (613) 727-0850 / Fax: (613) 727-1079  
Email: Nepean@annisov.com

Ontario  
Land Surveyors

Reg. No. 17071-16 Uniform P.L.18 C2 RF NP DFS F N