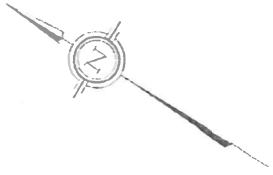


TOPOGRAPHICAL PLAN OF SURVEY OF
 LOTS 1, 2, 3, 4, 5, 6 AND 7
 REGISTERED PLAN NO. 392
 AND PARTS OF BLOCKS 2, 3 AND 4
 REGISTERED PLAN NO. 22
 ALL FORMERLY IN THE TOWNSHIP OF NESEBY,
 NOW IN THE CITY OF OTTAWA,
 REGIONAL MUNICIPALITY OF OTTAWA - CARLETON

Scale 1 : 250



NOTES AND LEGEND

SYMBOLS BY WHICH THE SURVEY IS SHOWN ON THE CITY OF OTTAWA CENTRAL REGISTRY.
 (1) THE SURVEY IS SHOWN BY A DOTTED LINE WITH THE WORDS "REGISTERED PLAN NO. 392" THEREON.
 (2) THE PARTS OF BLOCKS 2, 3 AND 4 WHICH ARE INCLUDED IN THIS SURVEY ARE SHOWN BY A DOTTED LINE WITH THE WORDS "REGISTERED PLAN NO. 22" THEREON.
 (3) THE PARTS OF BLOCKS 2, 3 AND 4 WHICH ARE NOT INCLUDED IN THIS SURVEY ARE SHOWN BY A DOTTED LINE WITH THE WORDS "REGISTERED PLAN NO. 22" THEREON.

- 1. B.L. POLE
- 2. S.W. POLE
- 3. S.W. POLE
- 4. S.W. POLE
- 5. S.W. POLE
- 6. S.W. POLE
- 7. S.W. POLE
- 8. S.W. POLE
- 9. S.W. POLE
- 10. S.W. POLE
- 11. S.W. POLE
- 12. S.W. POLE
- 13. S.W. POLE
- 14. S.W. POLE
- 15. S.W. POLE
- 16. S.W. POLE
- 17. S.W. POLE
- 18. S.W. POLE
- 19. S.W. POLE
- 20. S.W. POLE
- 21. S.W. POLE
- 22. S.W. POLE
- 23. S.W. POLE
- 24. S.W. POLE
- 25. S.W. POLE
- 26. S.W. POLE
- 27. S.W. POLE
- 28. S.W. POLE
- 29. S.W. POLE
- 30. S.W. POLE
- 31. S.W. POLE
- 32. S.W. POLE
- 33. S.W. POLE
- 34. S.W. POLE
- 35. S.W. POLE
- 36. S.W. POLE
- 37. S.W. POLE
- 38. S.W. POLE
- 39. S.W. POLE
- 40. S.W. POLE
- 41. S.W. POLE
- 42. S.W. POLE
- 43. S.W. POLE
- 44. S.W. POLE
- 45. S.W. POLE
- 46. S.W. POLE
- 47. S.W. POLE
- 48. S.W. POLE
- 49. S.W. POLE
- 50. S.W. POLE

SURVEYORS CERTIFICATE

I HEREBY CERTIFY THAT THE SURVEY SHOWN ON THIS PLAN WAS MADE BY ME OR UNDER MY SUPERVISION AND TO THE BEST OF MY KNOWLEDGE AND BELIEF IT ACCURATELY REPRESENTS THE ACTUAL SURFACE OF THE LAND SHOWN THEREON.

DATE: 1950

Robert A. Tisdall
 Robert A. Tisdall
 Ontario Land Surveyor

ANNIS & O'SULLIVAN LTD.
 DISTRICTS: any liability as to the accuracy of the contents of this survey, which is a preliminary and advisory in nature, shall be limited to the current accuracy of the contents hereof.

OCT 5 1950

REGISTERED PLAN NO. 392

REGISTERED PLAN NO. 22

REGISTERED PLAN NO. 22

REGISTERED PLAN NO. 22

REGISTERED PLAN NO. 22

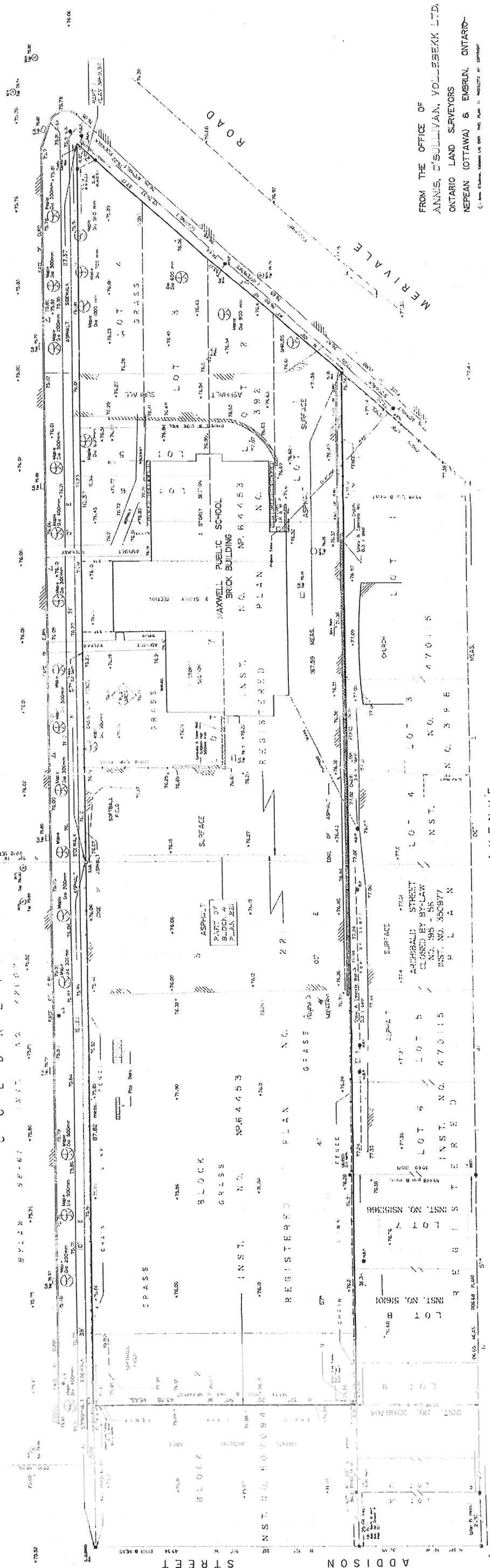
REGISTERED PLAN NO. 22

AVENUE

COLDREY

STREET

ADDISON



FROM THE OFFICE OF
 ANNIS, O'SULLIVAN, VOLLEBECK LTD.
 ONTARIO LAND SURVEYORS
 NEPEAN (OTTAWA) & EMBRUN, ONTARIO