

TOPOGRAPHICAL PLAN OF SURVEY
LOTS 12, 13, 14, 15, 16 AND
PART OF LOT 17
(North Slater Street)
AND
LOTS 14 & 15
(South Albert Street)
REGISTERED PLAN 3922
CITY OF OTTAWA
 Surveyed by Annis, O'Sullivan, Vollebek Ltd.

Scale 1 : 200
 8.0 6.0 4.0 2.0 0 2.0 4.0 6.0 8.0 Meters

Metric
 DISTANCES SHOWN ON THIS PLAN ARE IN METRES AND
 CAN BE CONVERTED TO FEET BY DIVIDING BY 0.3048

Surveyor's Certificate
 I CERTIFY THAT:
 1. This survey and plan are correct and in accordance with the regulations made under them.
 2. This survey was completed on the 28th day of March, 2014.

Edward M. L. Lavoie
 Edward M. Lavoie
 Ontario Land Surveyor

Notes & Legend

- Utilities**
- Survey Monument Found
 - SIB Standard Iron Bar
 - IB Iron Bar
 - CC Cut Cross
 - CP Concrete Pin
 - (WIT) Witness
 - Meas. Measured
 - (AOS) Annis, O'Sullivan, Vollebek Ltd. (AOS) Plan dated March 31, 2011
 - (P1) (AOS) Plan dated 1985 (Topo)
 - (P2) Plan-AR-25778
 - (P4) Plan-AR-10209
 - (P5) Plan D-52
 - (M-ST) Maintenance Hole (Storm Sewer)
 - (M-S) Maintenance Hole (Sanitary)
 - (M-B) Maintenance Hole (Bell)
 - (M-T) Maintenance Hole (Traffic)
 - (M-H) Maintenance Hole (Hydro)
 - (M-G) Maintenance Hole (Gas)
 - (M-VC) Valve Chamber (Watermain)
 - (S) Underground Storm Sewer
 - (S-W) Underground Sanitary Sewer
 - (U) Underground Water
 - (P) Underground Power
 - (G) Underground Gas
 - (UP) Utility Pole
 - (LS) Light Standard
 - (CB) Catch Basin
 - (FH) Fire Hydrant
 - (WV) Water Valve
 - (WSP) Water Stand Post
 - (GV) Gas Valve
 - (GM) Gas Meter
 - (TSP) Traffic Signal Post
 - (D) Deciduous Tree
 - (B) Bolivar
 - (S) Sign
 - (CLF) Chain Link Fence
 - (BF) Board Fence
 - (PW) Post and Wire
 - (WRF) Wood Retaining Wall
 - (CRW) Concrete Retaining Wall
 - (OW) Overhead Wires
 - (D) Diameter
 - (E) Location of Elevations
 - (C) Top of Concrete Curb Elevation
 - (C) Centreline
 - (CL) Property Line

NOTE #1: The Location of All Sight Triangles and Street Widening are Preliminary and must be approved by The City of Ottawa before any design work is undertaken.

SITE AREA 0.4920 HECTARES

Topographic data was collected under the following conditions:
 - Spot heights were collected using a Leica total station.
 - Elevation of some topographic data that is otherwise visible.

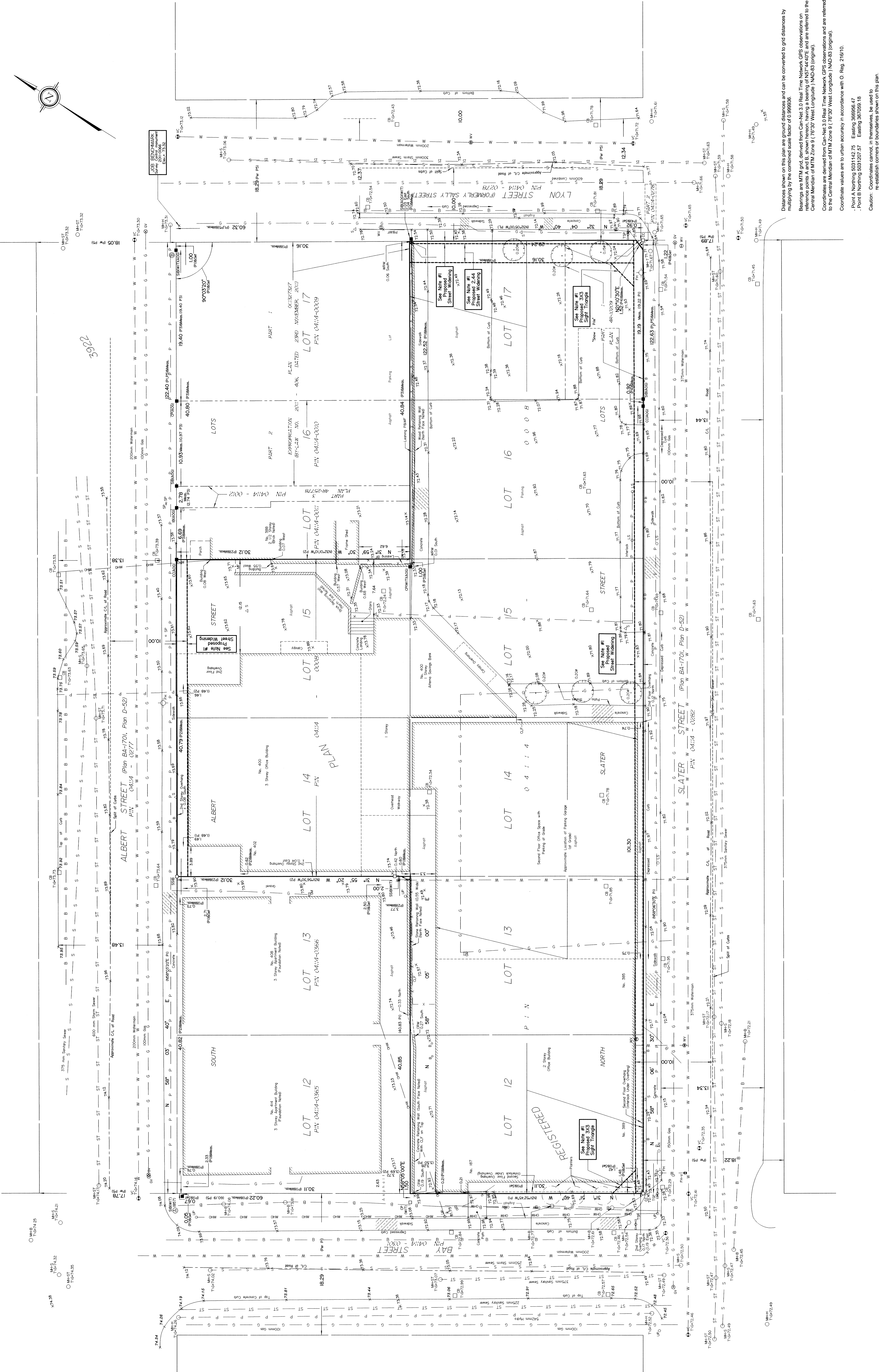
ELEVATION NOTES

1. Elevations shown are geoid and are referred to the CSVD028 geoid datum.
2. It is the responsibility of the user of this information to verify that the job benchmark has not been altered or disturbed and that its relative elevation and description agrees with the information shown on this drawing.

UTILITY NOTES

1. This drawing cannot be accepted as acknowledging all of the utilities and it will be the responsibility of the user to contact the respective utility authorities for confirmation.
2. Only visible surface utilities were located.
3. A field location of underground utilities by the permit utility authority is required.
4. Underground utilities shown on this plan are compiled from the City of Ottawa Plans D-1-18, D-1-19, D-1-24, & H-36-F.

Coordinates values are to urban accuracy in accordance with O. Reg. 216/10.
 - Point A Northing 5031142.75 Easting 368956.47
 - Point B Northing 5031207.57 Easting 367059.18
 Caution: Coordinates cannot, in themselves, be used to re-establish corners or boundaries shown on this plan.



ANNIS, O'SULLIVAN, VOLLEBEK LTD.
 14 Concourse Gate, Suite 500
 Nepean, Ont. K2E 7S8
 Phone: (613) 727-0560 / Fax: (613) 727-1079
 Land Surveyors (Ont. Reg. 44581-4, 44582-4, 44583-4, 44584-4, 44585-4, 44586-4, 44587-4, 44588-4, 44589-4, 44590-4, 44591-4, 44592-4, 44593-4, 44594-4, 44595-4, 44596-4, 44597-4, 44598-4, 44599-4, 44600-4)