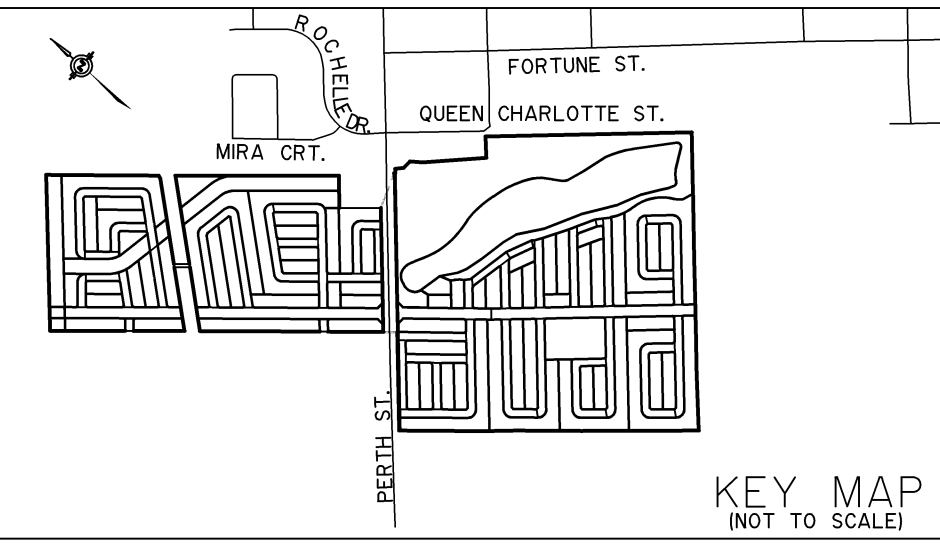


SUBJECT TO THE CONDITIONS, IF ANY SET FORTH IN OUR LETTER DATED 20 _____ THIS DRAFT PLAN IS APPROVED BY THE CITY OF OTTAWA UNDER SECTION 5(1) OF THE PLANNING ACT, THIS _____ DAY OF _____ 20____

Derrick Moodie
Manager Development Review
Planning and Growth Management Department
Infrastructure Services and Community Sustainability
City of Ottawa



DRAFT PLAN OF SUBDIVISION OF
UNITS 13, 15, 16, 20, 21,
AND PART OF UNIT 14, 17 AND 23
INDEX PLAN 4D-21
AND
PART OF UNITS 1, 2 AND 3
AND UNITS 4, 5, 6 AND 7
INDEX PLAN 4D-25
(GEOGRAPHIC TOWNSHIP OF GOULBOURN)
NOW IN THE
CITY OF OTTAWA

SCALE 1:1500
METRIC DISTANCES AND/OR COORDINATES SHOWN ON THIS PLAN ARE IN METRES AND CAN BE CONVERTED TO FEET BY DIVIDING BY 0.3048.

Additional Information
As required under section 5(1)(7) of the Planning Act R.S.O. 2001

(a) As shown on this Plan.
(b) As shown on this Draft and Key Plan.
(c) To be used in accordance with the Schedule of Land Use.
(d) Full municipal services.
(e) See notes report.
NOTE: Contours relate to Canadian Geodetic Datum.

Owner's Authorization
Richmond Village (North) Limited and Richmond Village (South) Limited, being the registered owners of the subject lands hereby authorize J.D. Barnes Limited to prepare and submit this draft plan of subdivision for approval.

Date: _____
Frank Caro, PRESIDENT

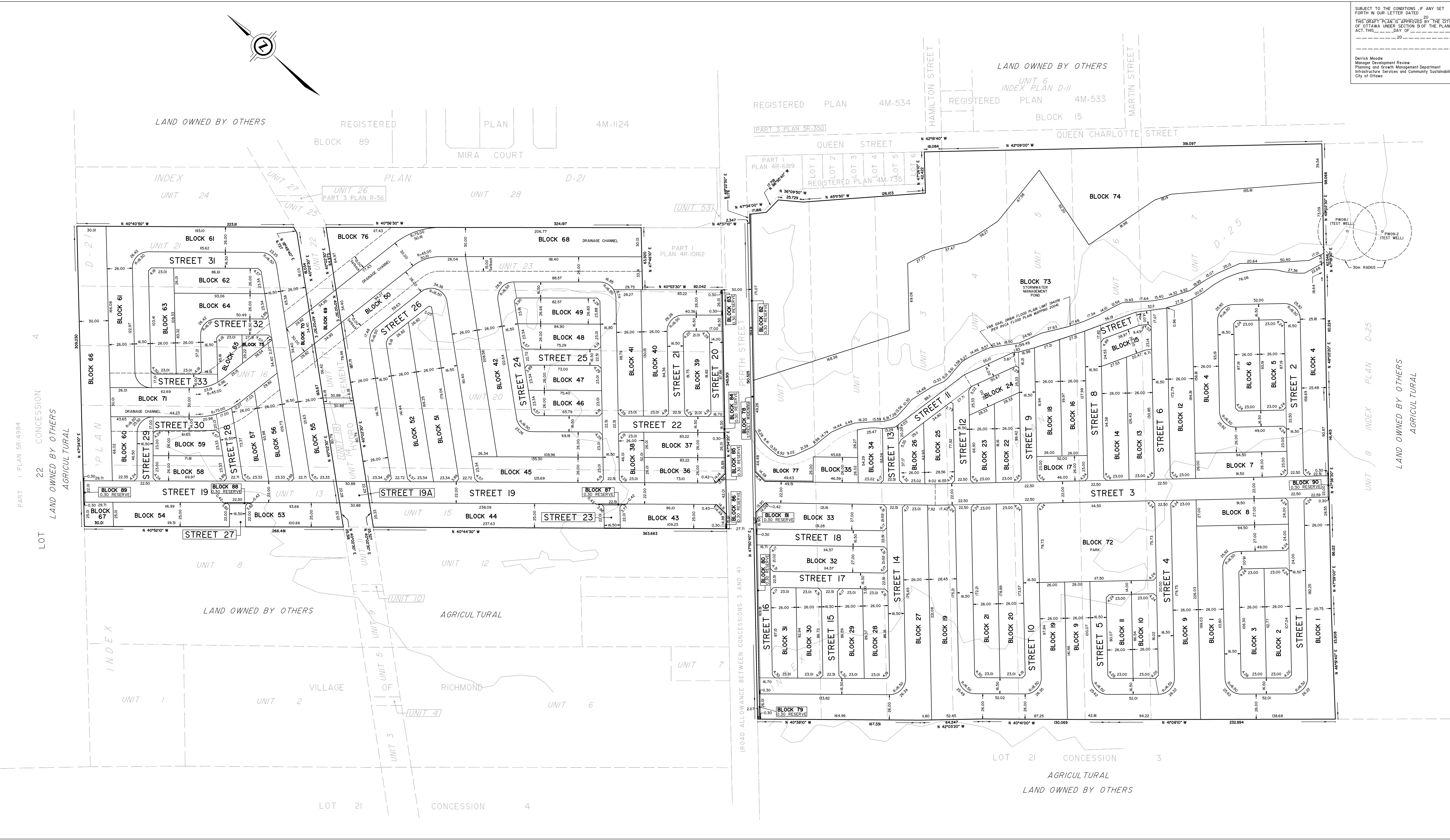
Surveyor's Certificate
I hereby certify that the boundaries of the lands to be subdivided as shown on this Plan and their relationship to the adjacent lands are correctly and accurately shown.

Date: JULY 25, 2011
George Zervos O.L.S.
J.D. Barnes Limited

Blocks	Land Use	Units	Area (hectares)
Blocks 16 to 65	Residential		252 ha.
Blocks 66 to 71	Drainage Channel		25 ha.
Block 72	Park		10 ha.
Block 73	Pond		5.9 ha.
Blocks 74, 75, 76 and 77	Open Space		6.3 ha.
Block 78	Street Widening		0.1 ha.
Blocks 79 to 90	Reserves		1.9 ha.
Streets			1.9 ha.
TOTAL			330 ha.

J.D. BARNES SURVEYING PLANNING LIMITED MAPPING
LAND INFORMATION SPECIALISTS
2400 DON REID DRIVE, SUITE 204, OTTAWA, ON K1H 1E1
T: (613) 731-7244 F: (613) 731-8955 www.jdbarnes.com

DRAWN BY: RDW/QC CHECKED BY: REFERENCE NO.: 10-10-314-00-DRAFT
FILE: k:\101033400\draft\314.dgn DATED: JULY 22, 2011 PLOTTED: 04 DEC 2011



PART 1 PLAN 5R-41984
22 CONCESSION
LAND OWNED BY OTHERS
AGRICULTURAL

LOT 21 CONCESSION 4
AGRICULTURAL
LAND OWNED BY OTHERS

LOT 21 CONCESSION 4
AGRICULTURAL
LAND OWNED BY OTHERS

INDEX PLAN D-25
INDEX PLAN D-21

ROAD ALLOWANCE BETWEEN CONCESSIONS 3 AND 41

LOT 21 CONCESSION 3
AGRICULTURAL
LAND OWNED BY OTHERS