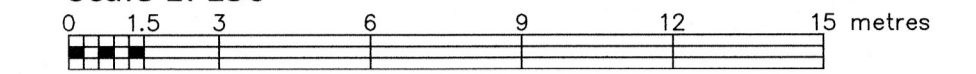


PART OF BLOCK C REGISTERED PLAN 86 CITY OF OTTAWA

FARLEY, SMITH & DENIS SURVEYING LTD. 2026

Scale 1: 150



Metric Note

Distances and/or coordinates on this plan are in metres and can be converted to feet by dividing by 0.3048.

Distance Note

Distances shown on this plan are ground distances and can be converted to grid distances by multiplying by the combined scale factor of 0.99997.

Bearing Note

Bearings hereon are grid bearings derived from the Can-Net Real Time Network and are referred to the Central Meridian of MTM Zone 9 (76°30' West Longitude) Nad-83 (Original).

Elevation Notes

- 1. Elevations shown are geodetic and are referred to Geodetic Datum CGVD-1978 -1978.
2. It is the responsibility of the user of this information to verify that the job benchmark has not been altered or disturbed and that its relative elevation and description agrees with the information shown on this drawing.

Utility Notes

- 1. This drawing cannot be accepted as acknowledging all of the utilities and it will be the responsibility of the user to contact the respective utility authorities for confirmation.
2. Only visible surface utilities were located.
3. Underground utility data derived from City of Ottawa utility sheet reference: 250952, VFO1-802-101-3 & 7712&P.
4. Sanitary and storm sewer grades and inverts were compiled from: City of Ottawa Utility Sheets.
5. A field location of underground plant by the pertinent utility authority is mandatory before any work involving breaking ground, probing, excavating etc.
6. Not all overhead wires/transformers adjacent to the property have been located, the nearest overhead wire locations are shown on the plan.

Notes & Legend

- Denotes Survey Monument Planted
SIB Survey Monument Found
SSIB Standard Iron Bar
IB Short Standard Iron Bar
(Wit) Iron Bar
(Wit) Witness
Meas Measured
(P1) Registered Plan 86
(P2) Plan 5R-9367
(P3) Plan by (AOG) dated June 10, 2015 (Job No. 13544-15)
(P4) Plan 5R-1140
(P5) Plan by (990) dated September 20, 1976 (Ref No. GL-86-64)
M+ST Maintenance Hole (Storm)
M+S Maintenance Hole (Sanitary)
ST Underground Storm Sewer
S Underground Sanitary Sewer
W Underground Water
OHV Overhead Wires
UP Utility Pole
AN Anchor
CSP Corrugated Steel Pipe
DM Gas Meter
AC Air Conditioner
Ø Diameter
RF Stone Retaining Wall
SRW Invert
T/G Top of Grate
T/P Top of Pipe
U/Eave Underside of Eave
TpFdn Top of Foundation
CL Centreline
+65.00 Location of Elevations
+65.00 Top of Retaining Wall Elevation
Property Line
Deciduous Tree - The Symbol shown denotes location and trunk diameter only. Size of its' root system/overhead canopy may be smaller/larger than the symbol size depicted on this plan.
Coniferous Tree - The Symbol shown denotes location and trunk diameter only. Size of its' root system/overhead canopy may be smaller/larger than the symbol size depicted on this plan.

Site Area=669.0 sq.m.

Table with 2 columns: Overhead Wire Elevations at Location 1, Overhead Wire Elevations at Location 2. Rows include Wire A, Wire B, and Wire C.

TOPOGRAPHIC DATA WAS COLLECTED UNDER WINTER CONDITIONS. SNOW COVER AND ICE PRECLUDE DETERMINING LOCATION AND ELEVATION OF SOME TOPOGRAPHICAL DATA THAT IS OTHERWISE VISIBLE.

WARNING NO PERSON MAY COPY, REPRODUCE, DISTRIBUTE OR ALTER THIS PLAN IN WHOLE OR IN PART WITHOUT THE WRITTEN PERMISSION OF FARLEY, SMITH & DENIS SURVEYING LTD. © FARLEY, SMITH & DENIS SURVEYING LTD., 2026.

Surveyor's Certificate

- I certify that:
1. This survey and plan are correct and in accordance with the Surveys Act, the Surveyors Act and the Regulations made under them.
2. The survey was completed on the 14th day of January, 2026.

Date: Feb. 5/26 Daniel Robinson Ontario Land Surveyor

This plan of survey relates to AOLS Plan Submission Form Number V-120516

FARLEY, SMITH & DENIS SURVEYING LTD.

ONTARIO LAND SURVEYORS CANADA LAND SURVEYORS

Unit 275, 30 COLONNADE ROAD, OTTAWA, ONTARIO K2E 7J6 TEL. (613) 727-8226 E-mail: info@fdsurveys.ca

FILE No.: 404-25

