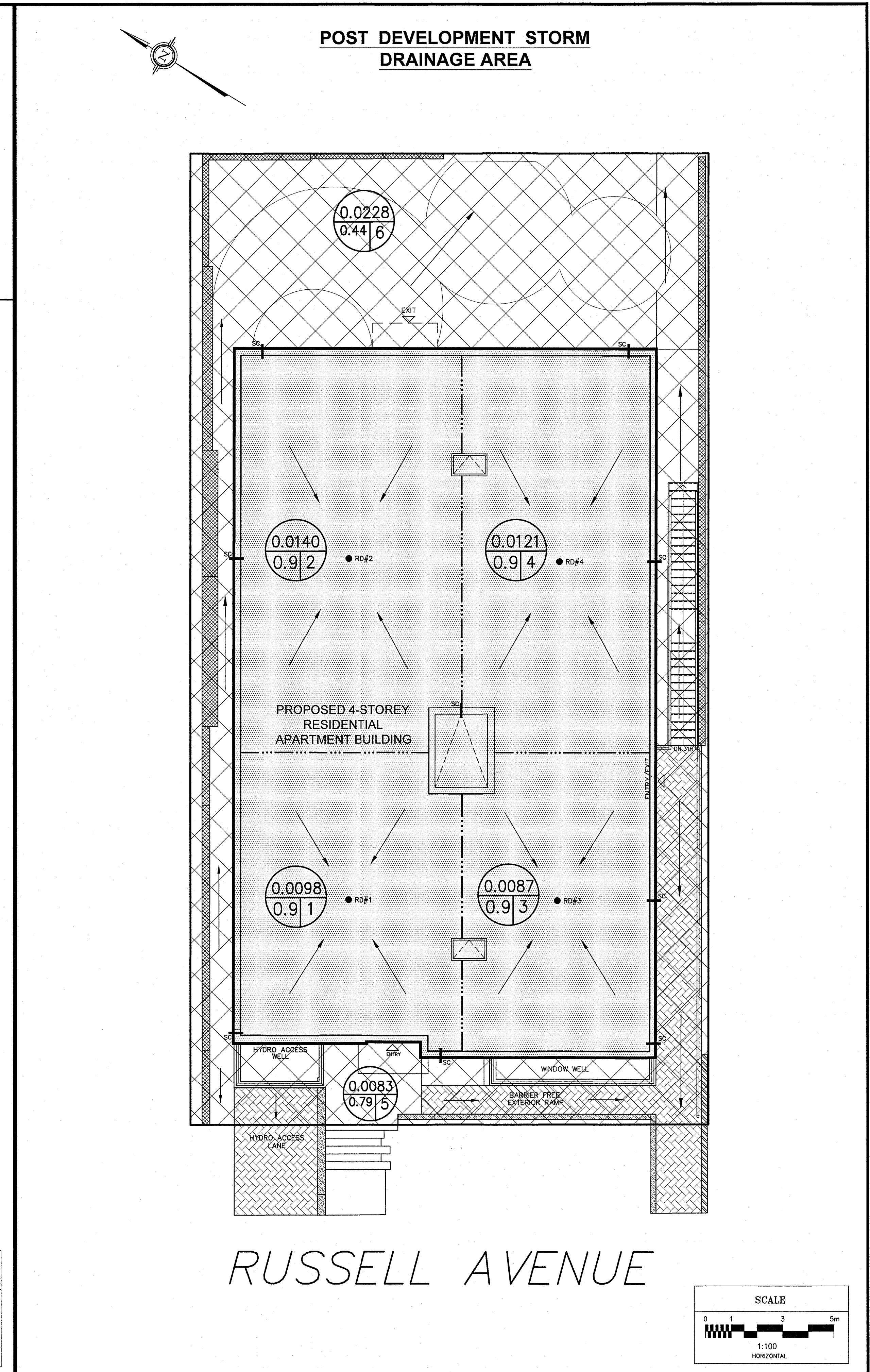
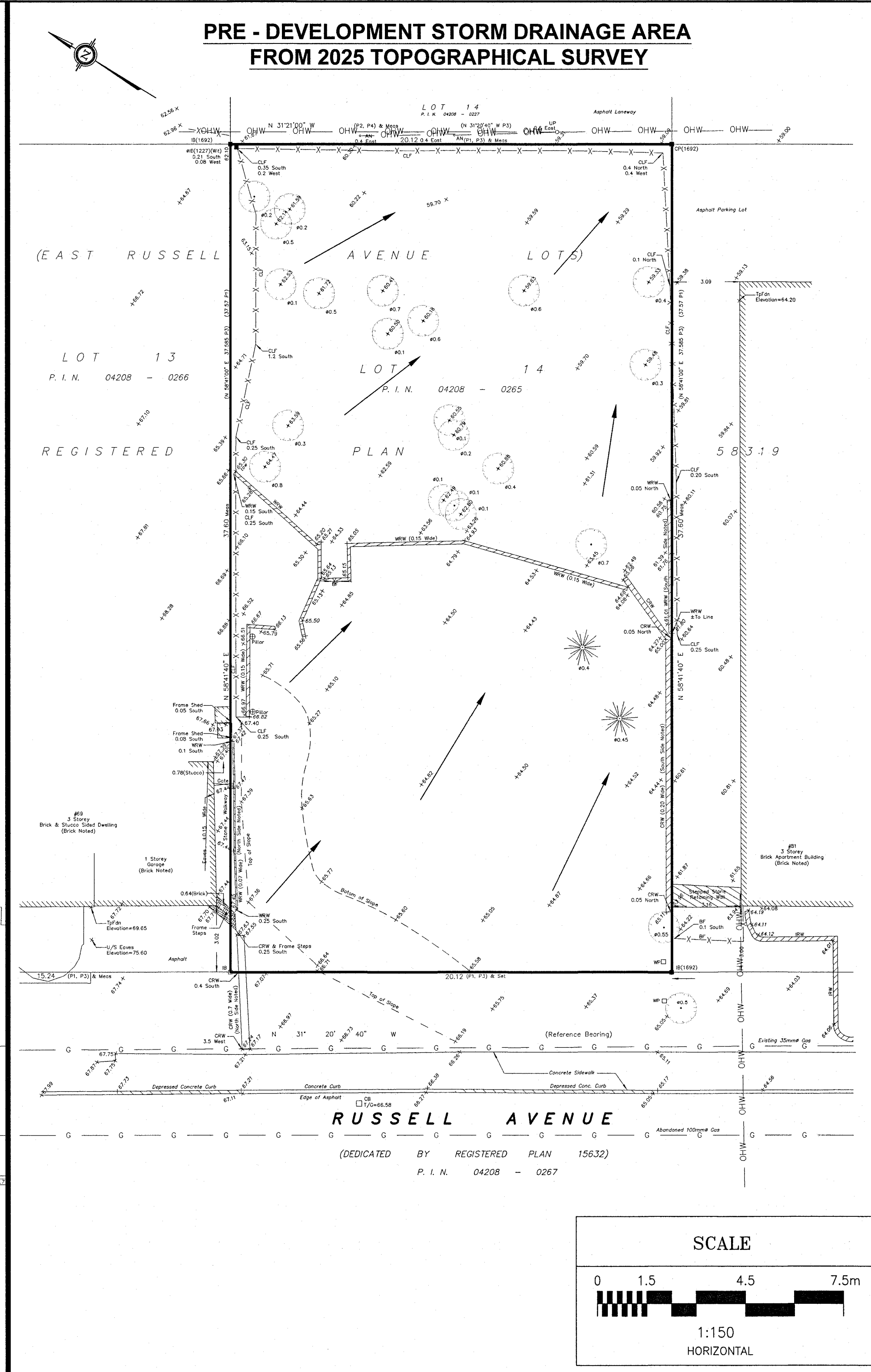
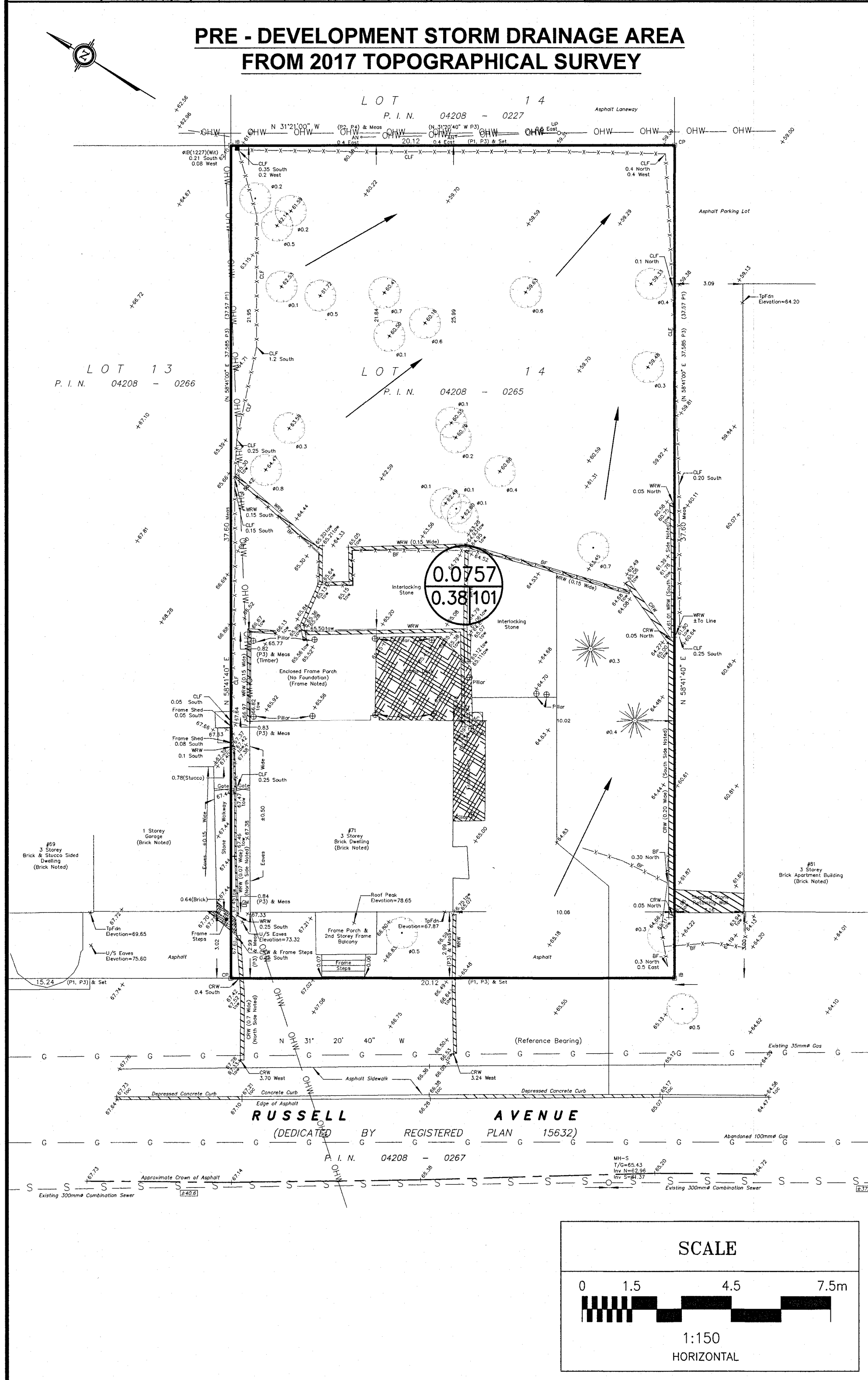


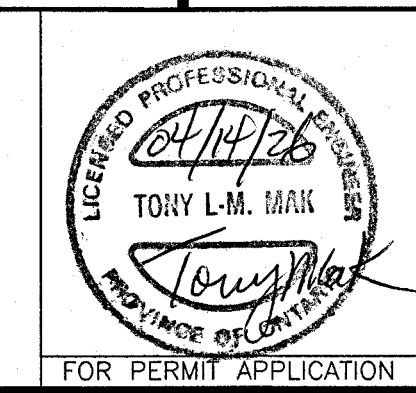
**NOTES**

- NODE #1, NODE #2, NODE #3, AND NODE #4 REPRESENTS. BUILDING ROOF AREA (SWM CONTROLLED AREA).
- NODE #5 REPRESENTS UNCONTROLLED DRAINAGE AREA DRAINING TO THE FRONT OF THE LOT.
- NODE #6 REPRESENTS UNCONTROLLED DRAINAGE AREA DRAINING TO THE REAR OF THE LOT.
- NODE #101 REPRESENTS PRE-DEVELOPMENT DATA FROM 2025.
- NODE #102 REPRESENTS PRE-DEVELOPMENT DATA FROM 2017.



No.	REVISION	DATE	BY
1	REVISIONS AS PER ARCHITECT'S REVIEW COMMENTS AND REVISED SITE PLAN OF APRIL 10, 2025	04/14/25	TLM

DESIGN	T.L.M.
CHECKED	T.L.M.
DRAWN BY	P.M.
CHECKED	T.L.M.
APPROVED	T.L.M.



PROJECT: 71 RUSSELL AVENUE  
 LOT 14  
 EAST SIDE OF RUSSELL AVENUE  
 REGISTERED PLAN 58319  
 CITY OF OTTAWA

DRAWING TITLE: STORM DRAINAGE AREA PLAN

T.L. MAK ENGINEERING CONSULTANTS LTD.  
 CONSULTING ENGINEERS

PROJECT No. 825-96  
 DATE: DECEMBER 2025  
 DRAWING No. D-1

D07-12-26-0014

#19441