

Distances shown on this plan are ground distances and can be converted to grid distances by multiplying by the combined scale factor of 0.99999x.

Bearings are grid, derived from Can-Net 2016 Real Time Network GPS observations on reference points A and B, shown hereon and are referenced to Specified Control Points: 01919680005 and 01919680105, MTM Zone 9 (76°30' West Longitude) NAD-83 (original).

For Comparison Purposes Bearings on Plan P1, P2, P3 are astronomic.

Coordinates are derived from Can-Net 2016 Real Time Network GPS observations referenced to Specified Control Points 01919680005 and 01919680105, MTM Zone 9 (76°30' West Longitude) NAD-83 (original).

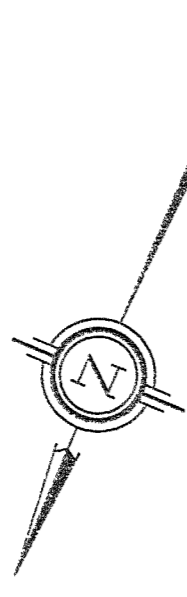
Coordinate values are to urban accuracy in accordance with O. Reg. 216/10.

. 01919680005 Northing 5027191.26 Easting 361496.76
 . 01919680105 Northing 5024915.16 Easting 373971.65
 . Point A Northing 5028559.43 Easting 363484.39
 . Point B Northing 5028694.00 Easting 363392.25

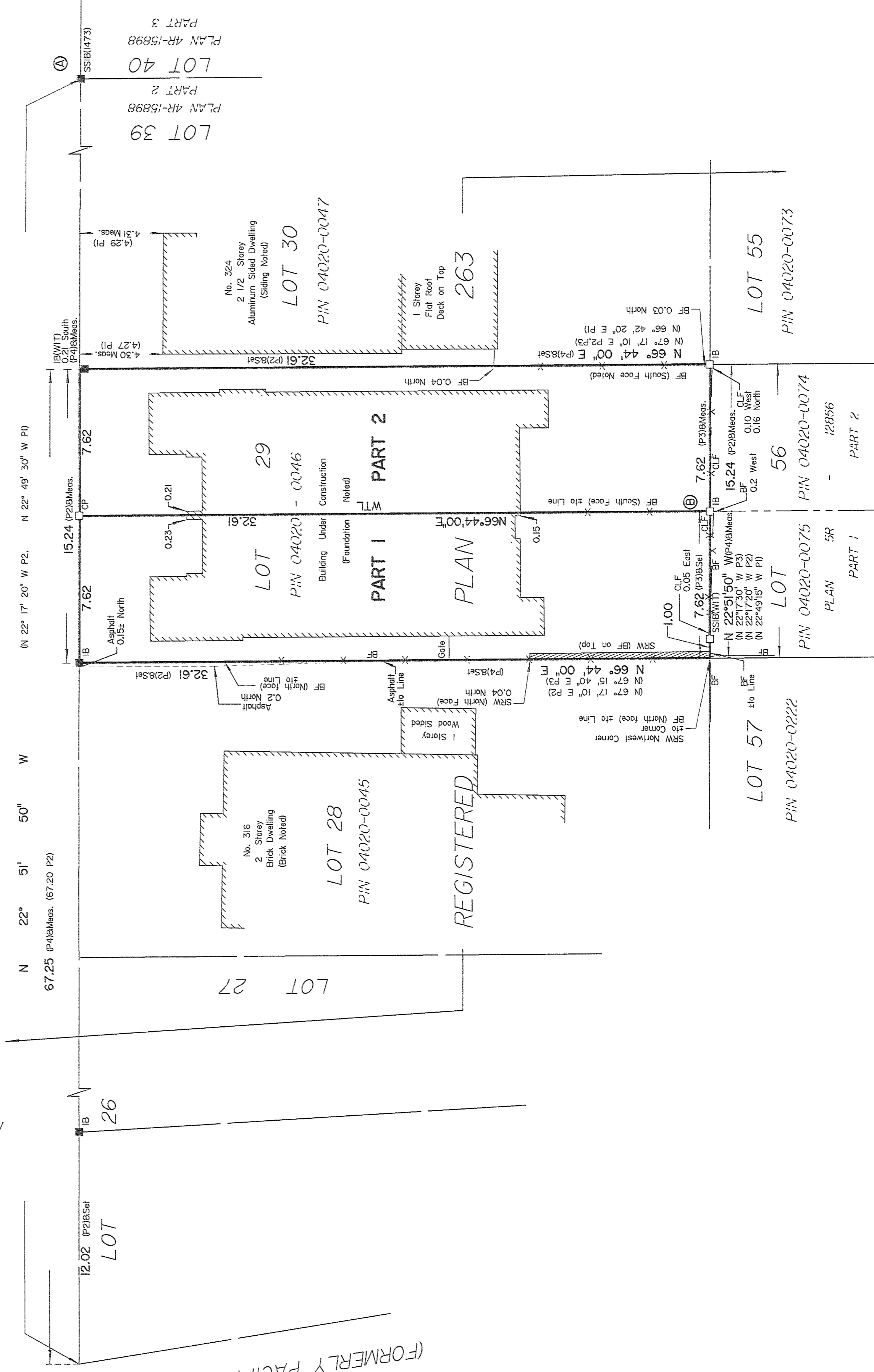
Caution: Coordinates cannot, in themselves, be used to re-establish corners or boundaries shown on this plan.

TWEEDSMUIR AVENUE
(Formerly Xavier Avenue)

PIN 04020-0018



SCOTT STREET
(FORMERLY PACIFIC STREET)



PLAN 4R-33556
RECEIVED AND DEPOSITED
DATE: Feb 23, 2021

I REQUIRE THIS PLAN TO BE DEPOSITED UNDER THE LAND TITLES ACT.
DATE: Feb 23, 2021

V. ANDREW SHELP
ONTARIO LAND SURVEYOR

REPRESENTATIVE FOR
LAND REGISTRAR FOR THE
LAND TITLES DIVISION OF
OTTAWA-CARLETON NO. 4.

SCHEDULE			
PART	LOT	PLAN	PIN
1	ALL OF 29	263	ALL OF 04020-0046
2			

PLAN OF SURVEY OF
LOT 29
REGISTERED PLAN 263
CITY OF OTTAWA

Surveyed by Annis, O'Sullivan, Vollebek Ltd.

Scale 1 : 200



Metric

DISTANCES AND COORDINATES SHOWN ON THIS PLAN ARE IN METRES AND CAN BE CONVERTED TO FEET BY DIVIDING BY 0.3048.

Surveyor's Certificate

I CERTIFY THAT:

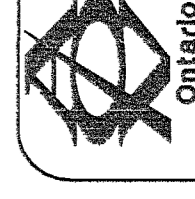
- This survey and plan are correct and in accordance with the Surveys Act, the Surveyors Act and the Land Titles Act and the regulations made under them.
- The survey was completed on the 5th day of February, 2021.

Feb 10/21
Date

V. Andrew Shelp
Ontario Land Surveyor

Notes & Legend

- Survey Monument Planted
- Survey Monument Found
- SIB Standard Iron Bar
- SSIB Short Standard Iron Bar
- IB Iron Bar
- CP Concrete Pin
- (WIT) Witness
- Meas. Measured
- (AOG) Annis, O'Sullivan, Vollebek Ltd.
- (P) Registered Plan 263
- (P1) (AOG) Plan January 29, 1988
- (P2) (AOG) Plan April 27, 1990
- (P3) Plan 5R-12856
- (P4) (AOG) Plan May 31, 2018
- WTL Centerline of Wall +/- to Line
- BF Board Fence
- CLF Chain Link Fence
- SRW Stone Retaining Wall



ANNIS, O'SULLIVAN, VOLLEBEKK LTD.
14 Concourse Gate, Suite 500
Nepean, Ont. K2E 7S6
Phone: (613) 727-0850 / Fax: (613) 727-1079
Email: nsg@annsvol.com