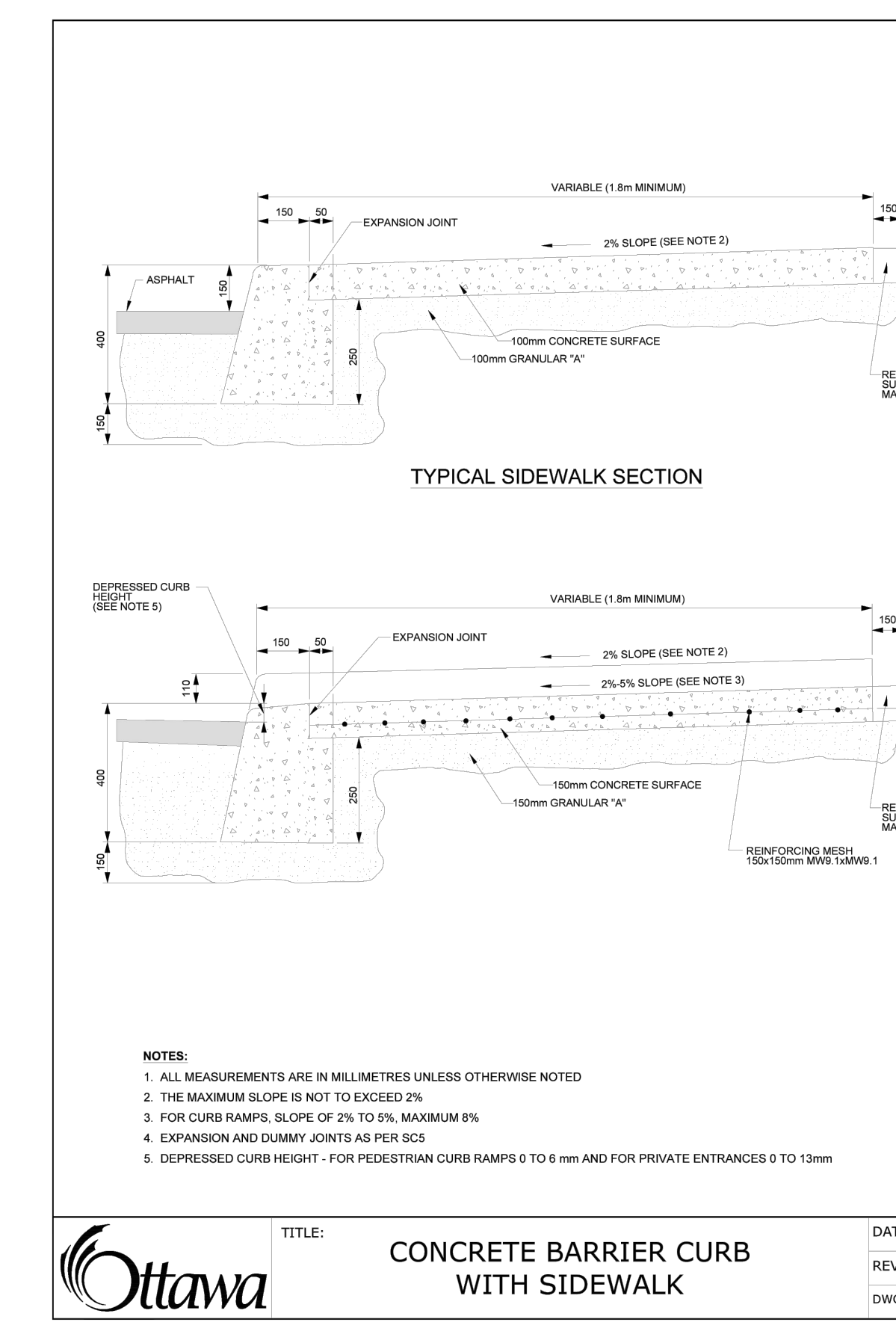
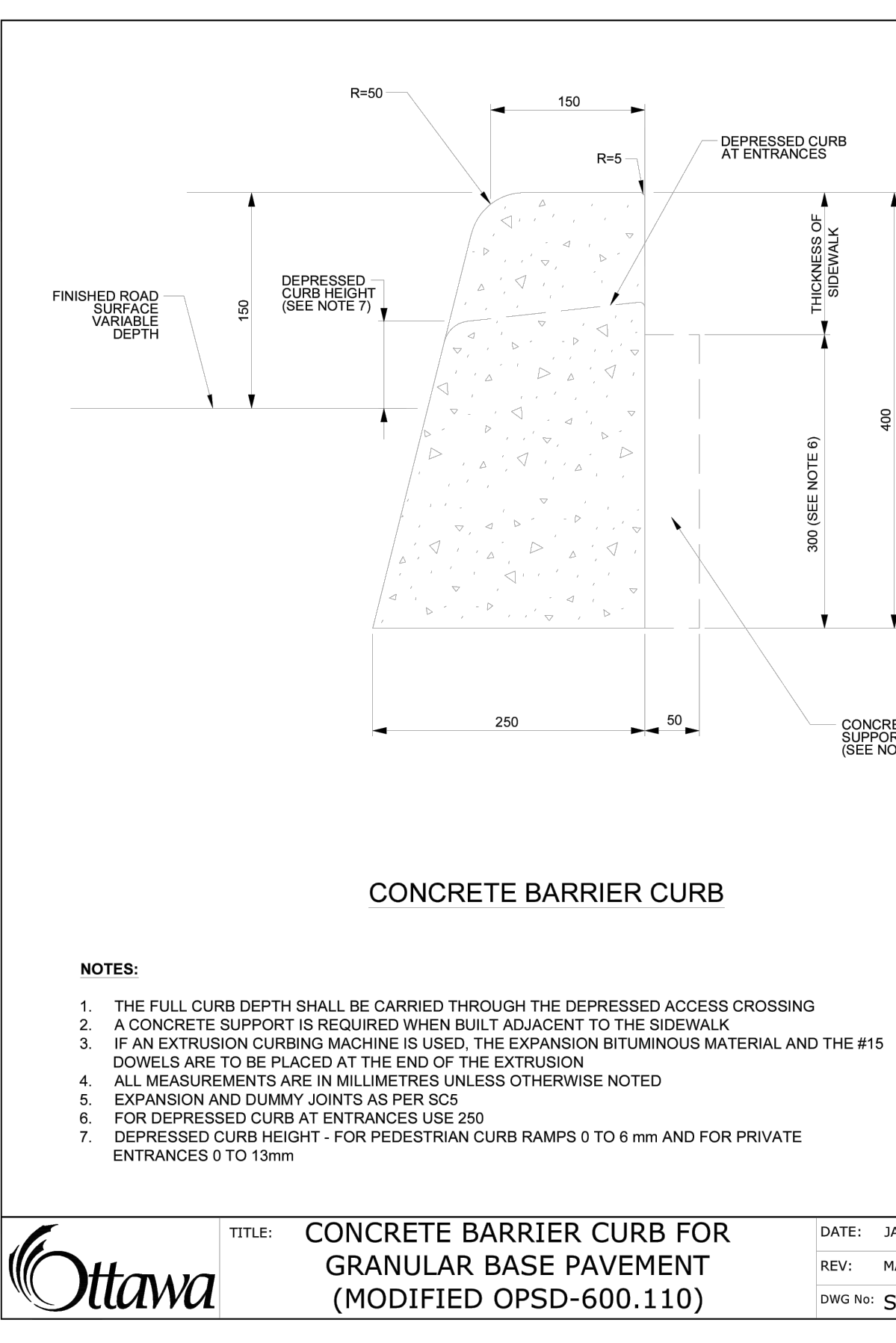
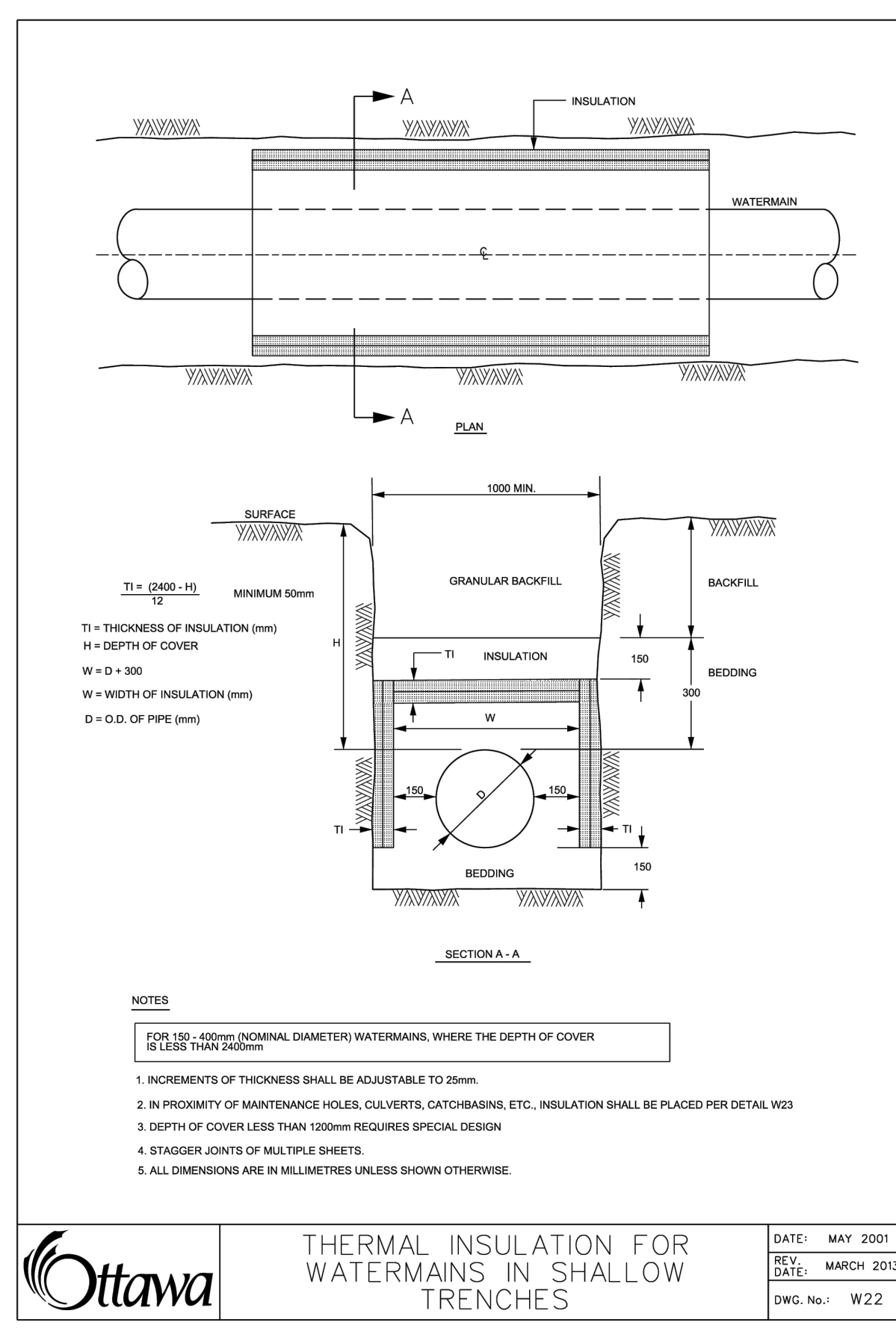
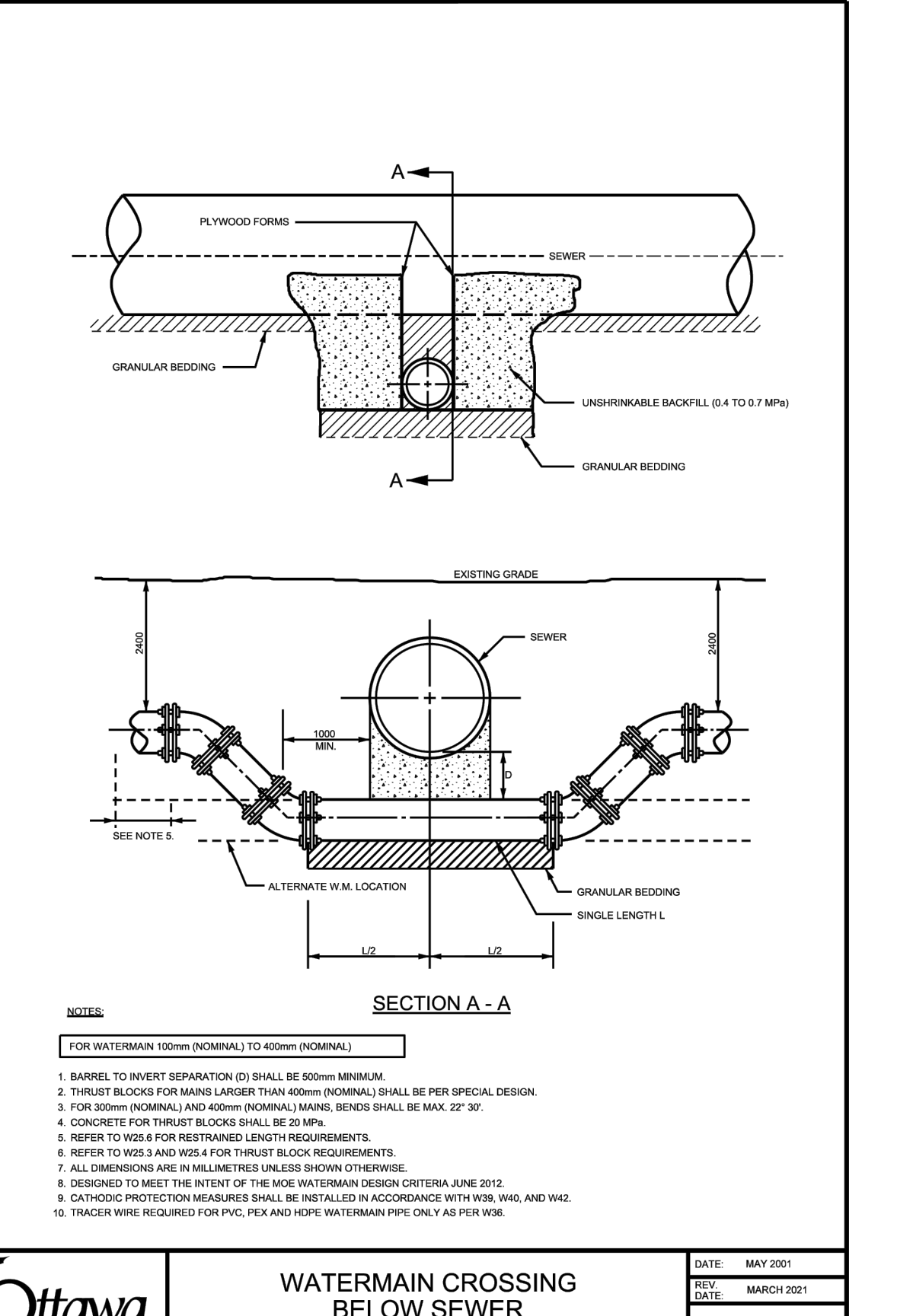
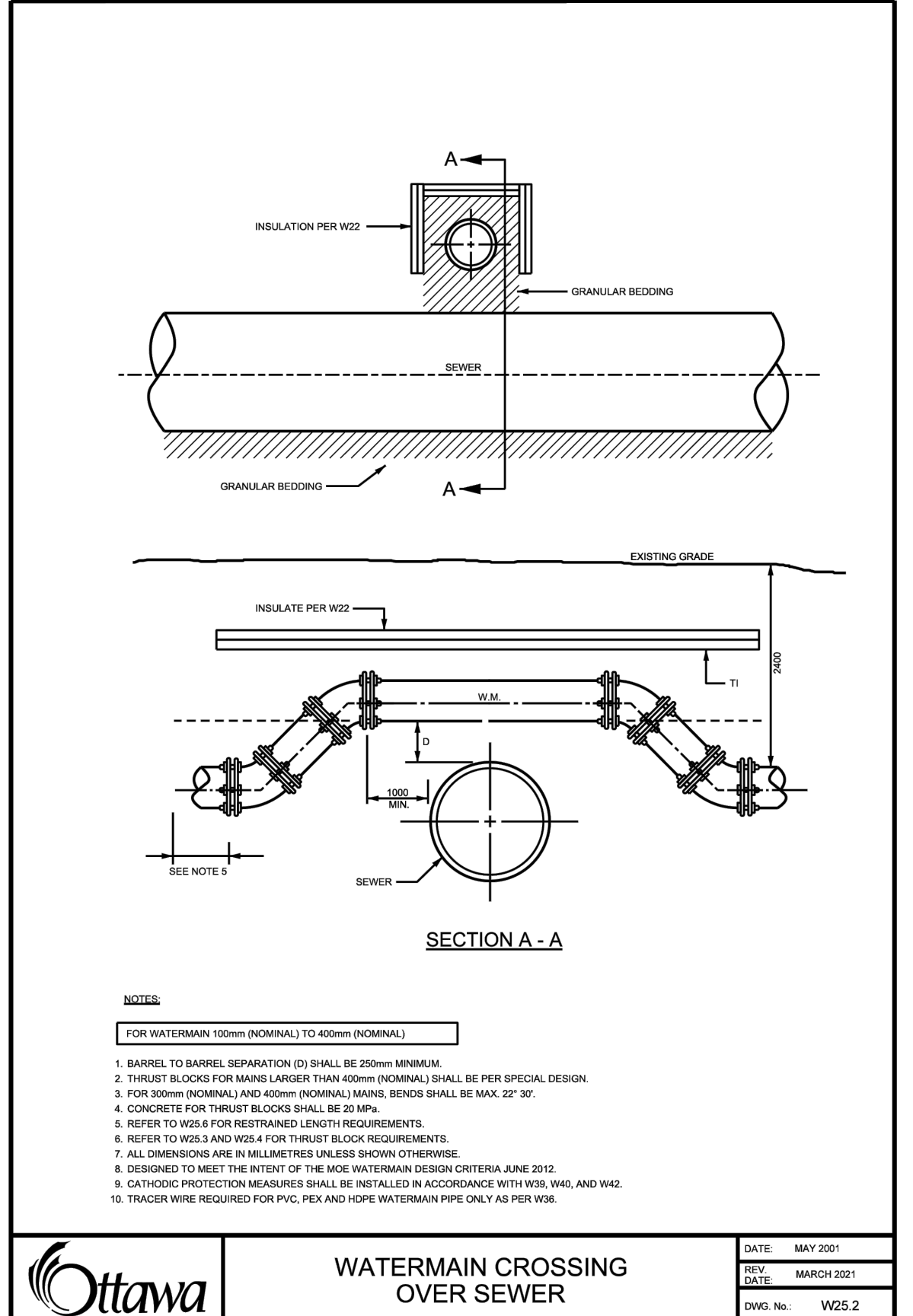
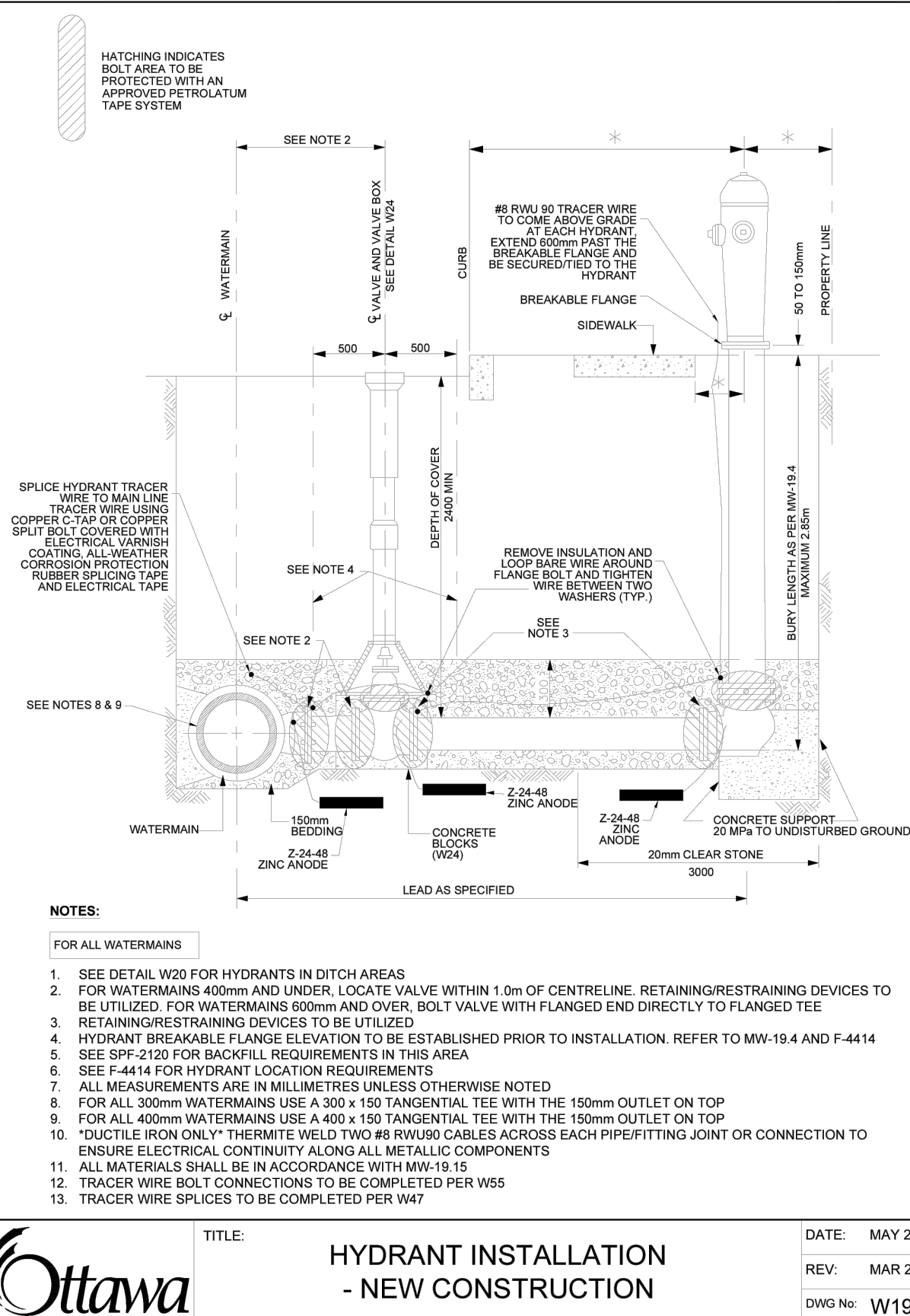
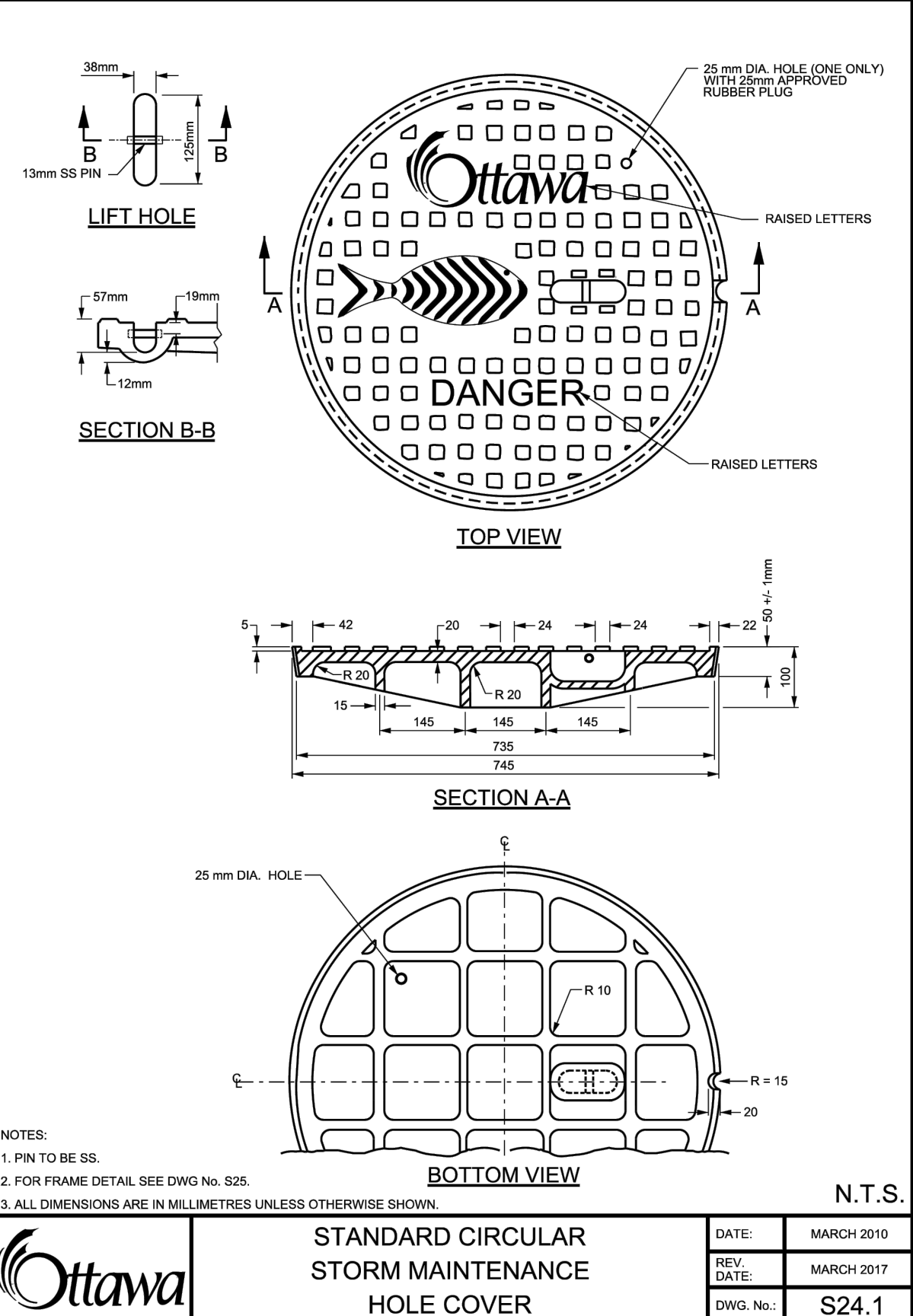
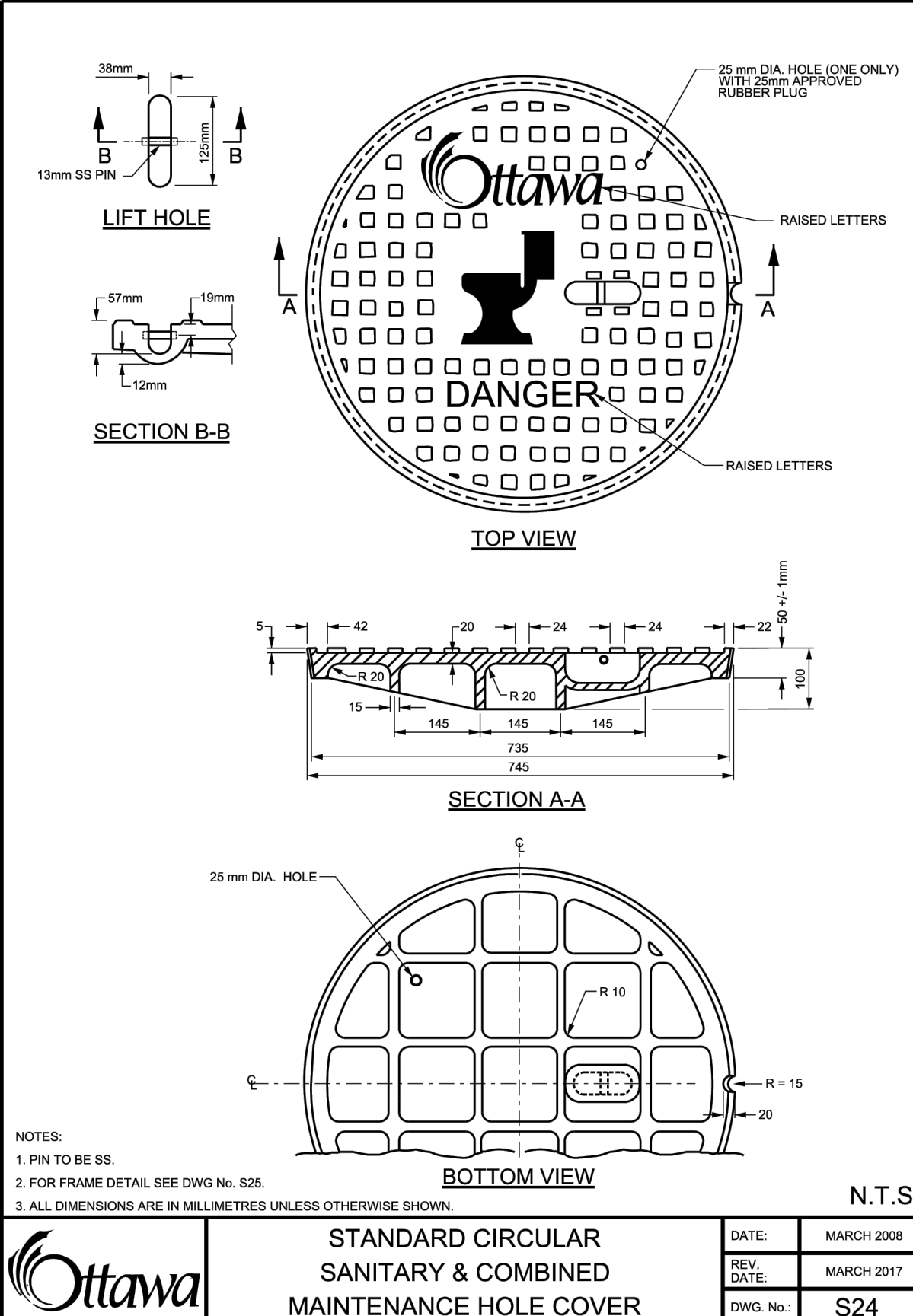
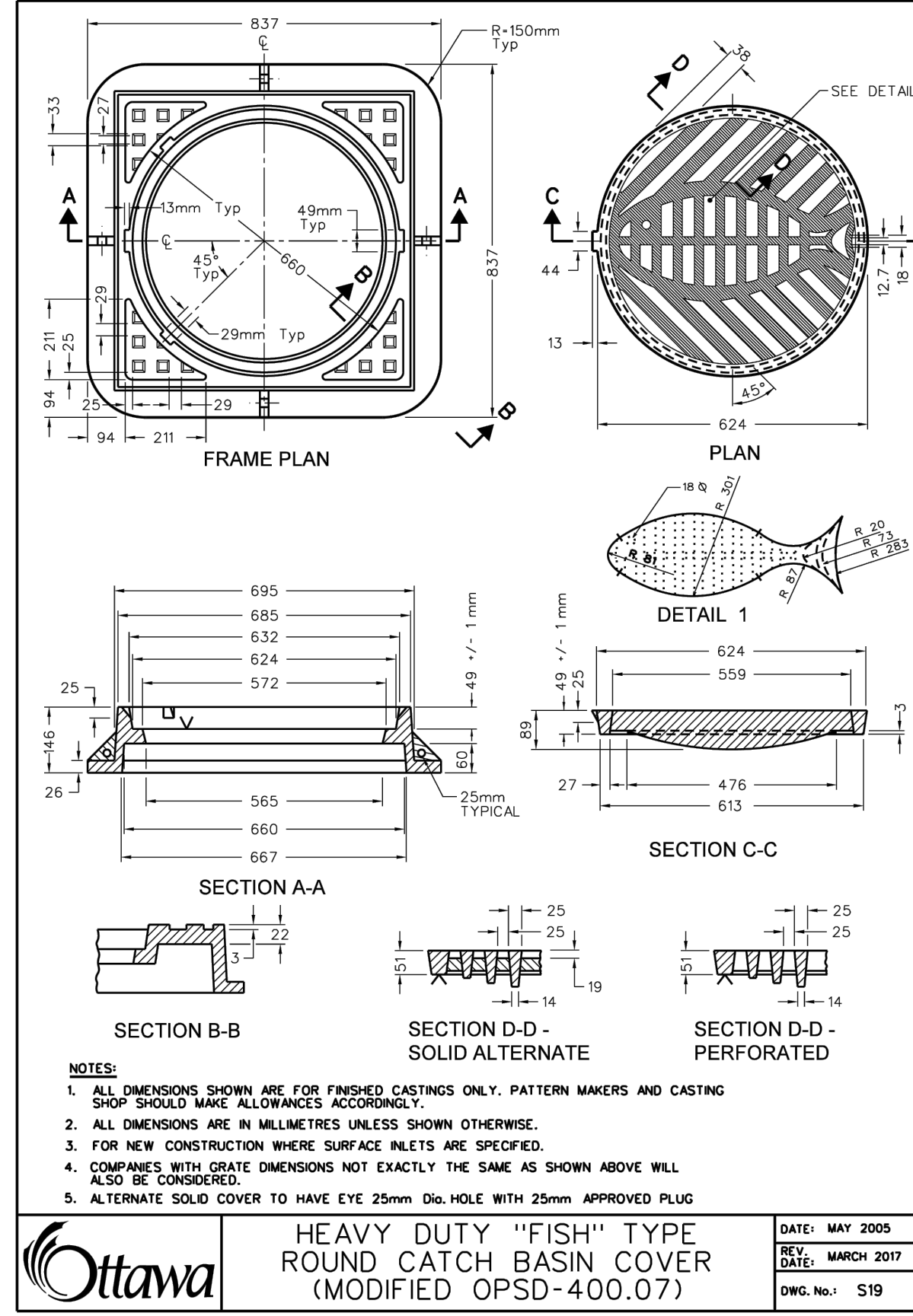
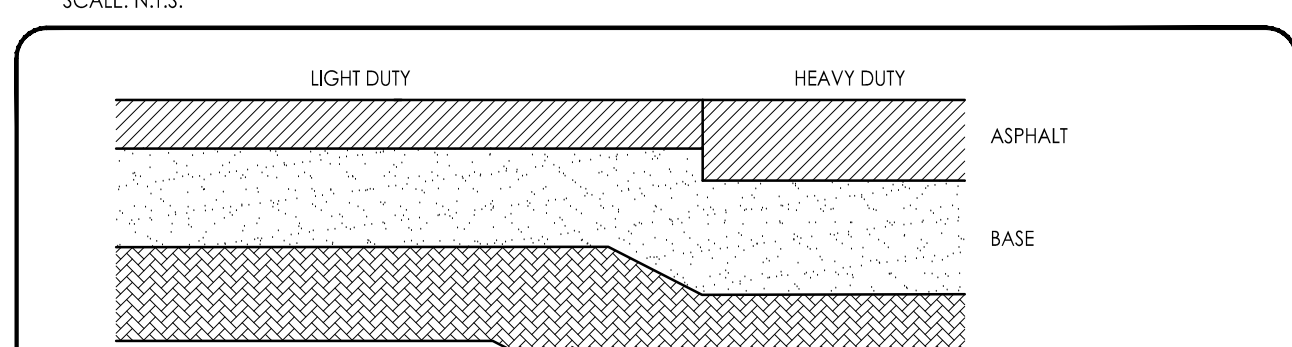
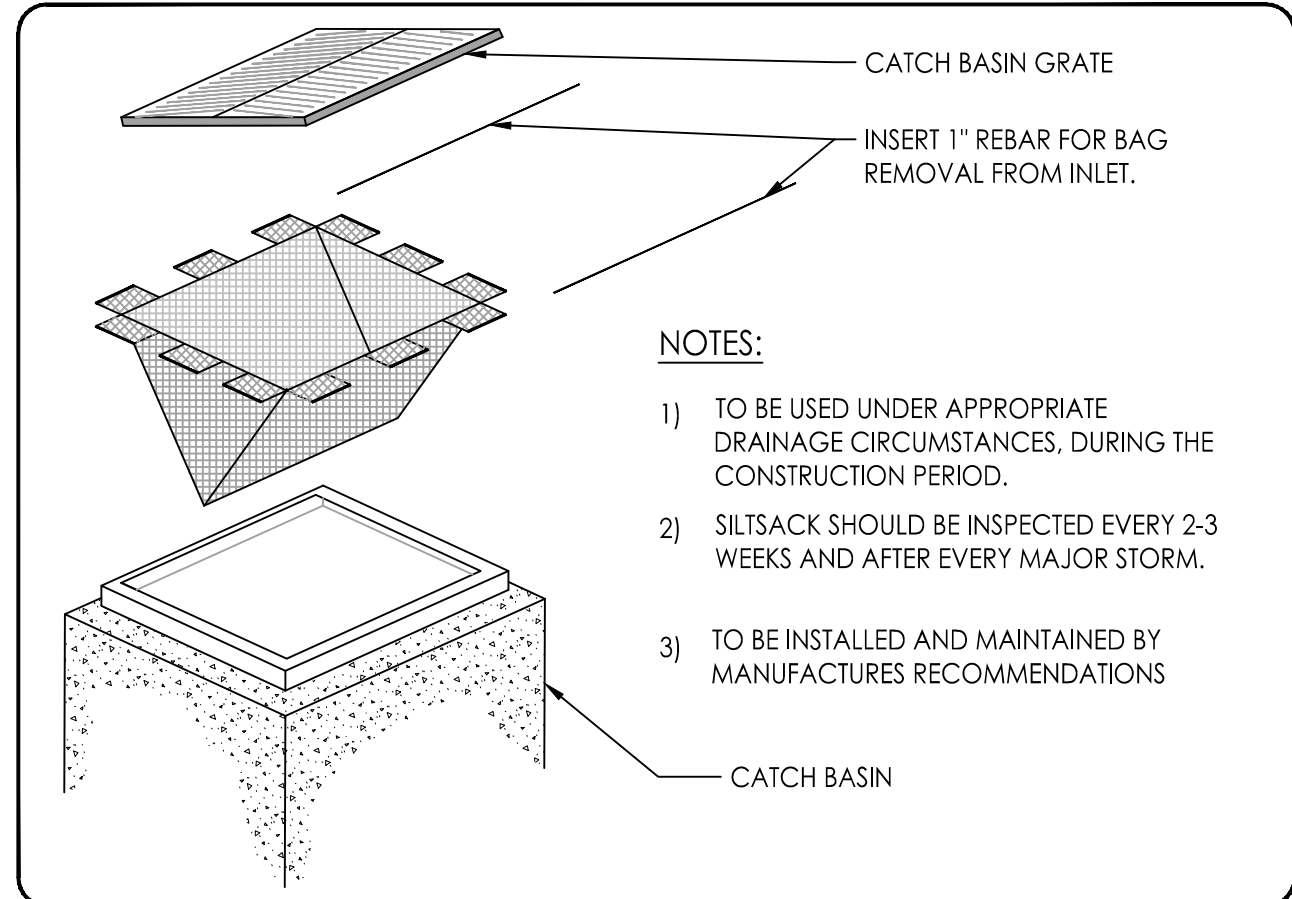
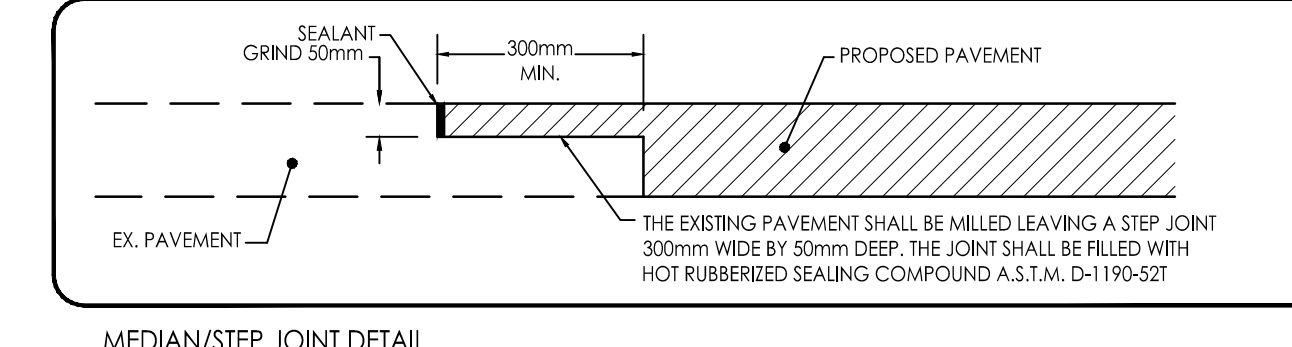
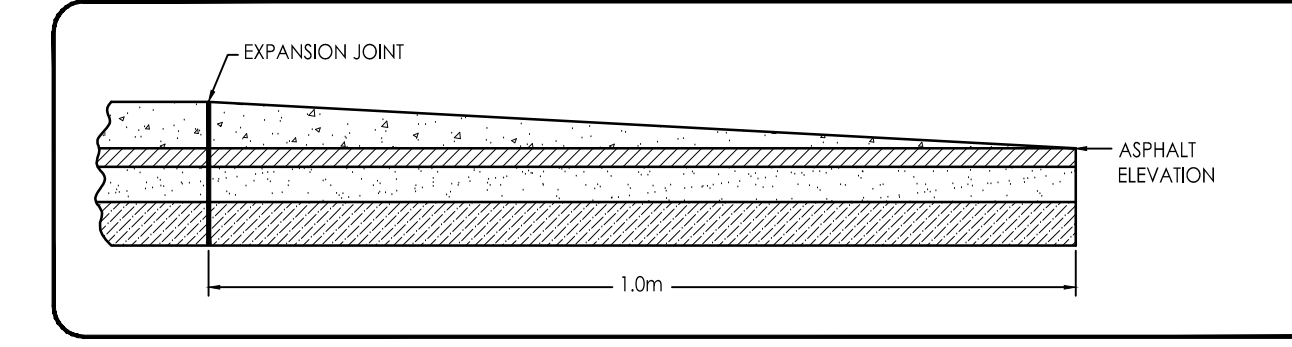
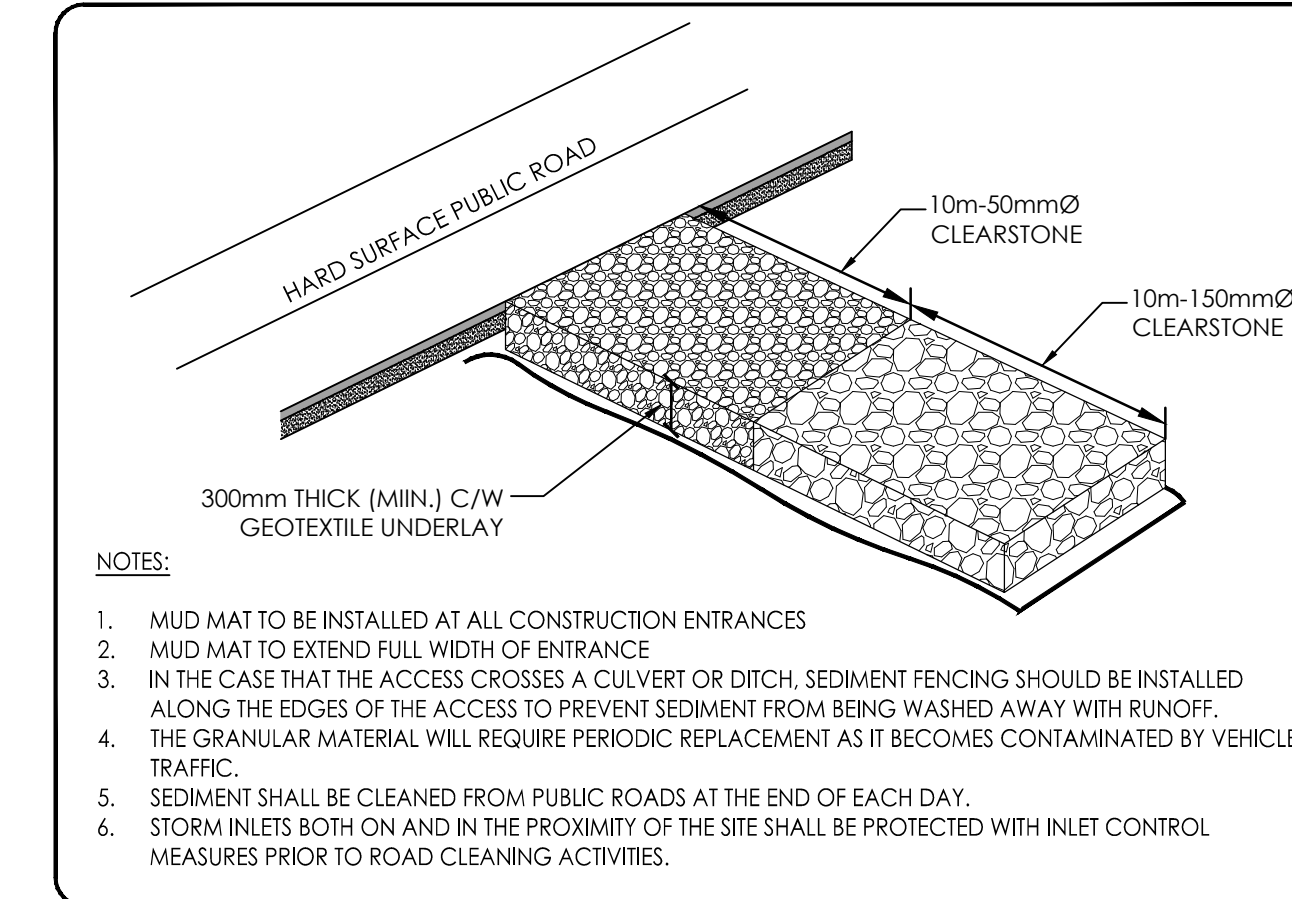
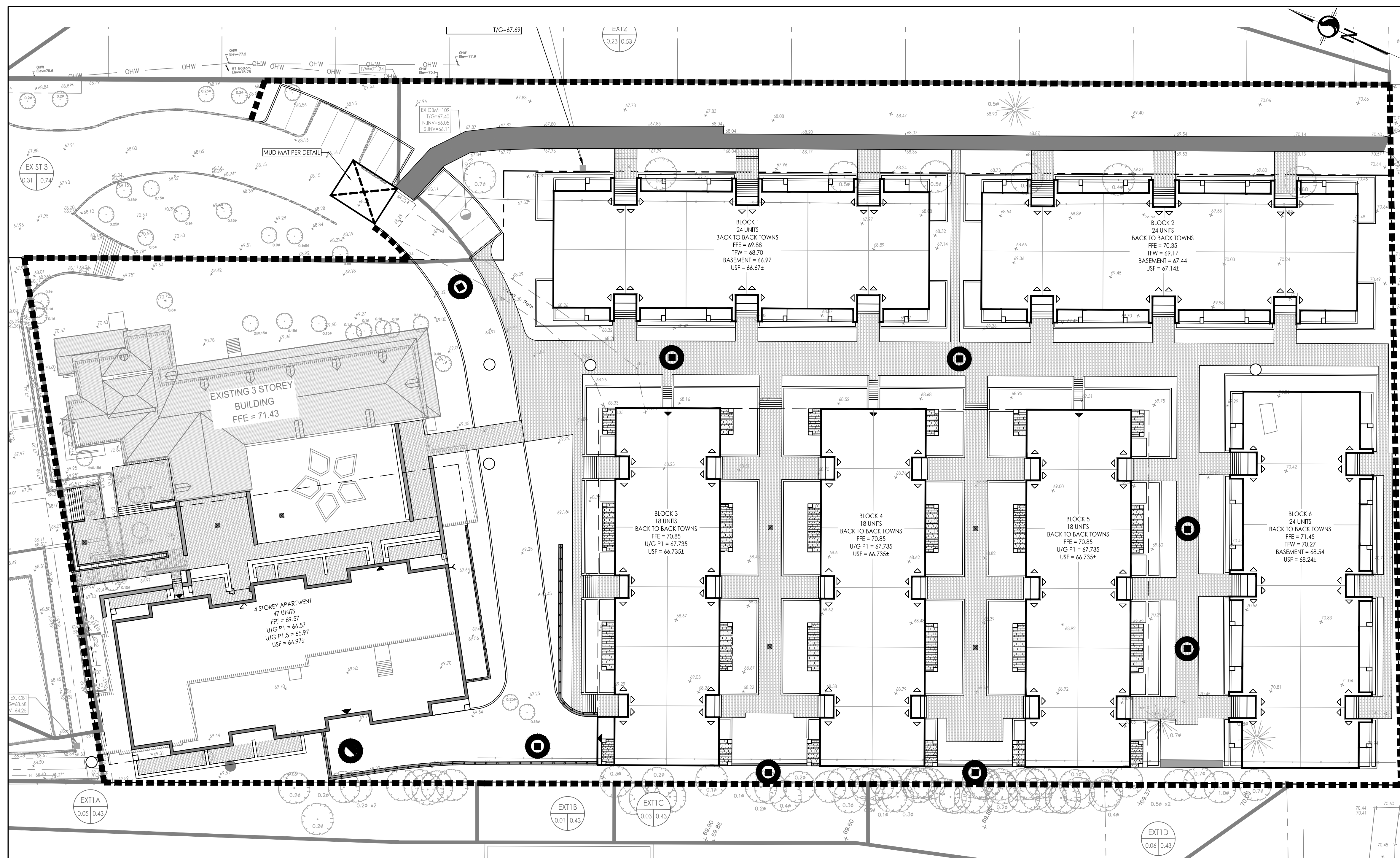


- CONTRACTOR TO PROVIDE EROSION AND SEDIMENT CONTROL (BEST MANAGEMENT PRACTICES) DURING CONSTRUCTION OF THE PROJECT.
- EROSION MUST BE MINIMIZED AND SEDIMENTS MUST BE REMOVED FROM CONSTRUCTION SITE DRAINAGE DITCHES TO PREVENT CONTAMINATION OF NEARBY SURFACE WATER. CONSTRUCTION EROSION AND SEDIMENTATION SHOULD BE CONTROLLED BY THE FOLLOWING TECHNIQUES:
1. LIMIT THE EXTENT OF EXPOSED SOILS AT ANY GIVEN TIME.
 2. REVEGETATE EXPOSED AREAS AND SLOPES AS SOON AS POSSIBLE.
 3. MINIMIZE AREAS TO BE CLEARED AND GRUBBED.
 4. PROTECT EXPOSED SLOPES WITH PLASTIC OR SYNTHETIC MULCHES.
 5. INSTALL CATCH BASIN INLETS OR EQUIVALENT IN ALL PROPOSED CATCH BASINS AND CATCH BASIN MANHOLES AND IN ALL EXISTING CATCH BASINS THAT WILL RECEIVE RUNOFF FROM THE SITE.
 6. A SILT FENCE SHALL BE INSTALLED AROUND THE PERIMETER OF ALL AND ANY STOCKPILES OF MATERIAL, TO BE USED OR DRAINING FROM THE SITE, TO BE DETERMINED.
 7. A VEGETATION INSPECTION SHALL BE DONE ONLY ON EROSION CONTROL MEASURES AND CLEARED OF ANY ACCUMULATED DEBRIS AS REQUIRED. THE DEPOSITS SHALL BE DISPOSED OFF SITE PER THE REQUIREMENTS OF THE CONTRACT.
 8. SEDIMENT CONTROL BARRIERS MAY ONLY BE REMOVED TEMPORARILY WITH APPROVAL OF THE CONTRACT ADMINISTRATOR. THE MEASURES IN PLACE SHOULD BE MAINTAINED AND MONITORED AT ALL TIMES. BARRIERS SHALL BE INSTALLED AT NIGHT WHEN CONSTRUCTION COMPLETED AND REMOVAL OF DEBRIS FROM THE BARRIERS SHALL BE DONE IMMEDIATELY. BARRIERS SHALL BE MAINTAINED AND REPAIRED AS NECESSARY TO PREVENT EXISTING STORM AND SANITARY SEWER SYSTEMS OR CONTAMINATION OF NEARBY AREAS.
 9. NO REPLETING OR CLEANING OF EQUIPMENT IS PERMITTED NEAR ANY EXISTING WATERWAY.
 10. CONTRACTOR SHALL REMOVE SEDIMENT CONTROL MEASURES WHEN, IN THE OPINION OF THE CONTRACT ADMINISTRATOR, THE MEASURES IN PLACE SHOULD BE REMOVED. UNCONTROLLED MEASURES SHALL BE PERMANENTLY REMOVED WITHOUT PRIOR WRITTEN AUTHORIZATION FROM THE CONTRACT ADMINISTRATOR.
 11. THE CONTRACTOR SHALL PERIODICALLY, OR WHEN REQUESTED BY THE CONTRACT ADMINISTRATOR, CLEAR OUT ACCUMULATED SEDIMENTS AS REQUIRED.
 12. THE CONTRACTOR SHALL IMMEDIATELY REPORT TO THE PROJECT AND ACCIDENTAL DISCHARGE OF SEDIMENT MATERIAL INTO THE WATERCOURSE. APPROPRIATE RESPONSE MEASURES, INCLUDING ANY REQUIRED BEST MANAGEMENT PRACTICES, SHALL BE CARRIED OUT BY THE CONTRACTOR AT HIS/HER OWN COST.
 13. CONTRACTOR SHALL INSTALL MUD MATS AT BOTH ENTRANCES TO THE SITE.
 14. STORMWATER SHALL BE COVERED WITH HYDRO-SEED AND MULCH.
 15. THE CONTRACTOR SHALL MONITOR SITE CONDITIONS AND ADJUST, REPAIR, OR INSTALL ADDITIONAL BEST MANAGEMENT PRACTICES AS NECESSARY. BEST MANAGEMENT PRACTICES SHALL BE MAINTAINED TO ALLOW TIMELY MODIFICATIONS.



Revision	By	Appr.	Date
0	ISSUED FOR SPA	MJS	07/26/04
1	REVISION	By	07/26/04
2	REVISION	By	07/26/04
3	REVISION	By	07/26/04
4	REVISION	By	07/26/04
5	REVISION	By	07/26/04
6	REVISION	By	07/26/04
7	REVISION	By	07/26/04
8	REVISION	By	07/26/04
9	REVISION	By	07/26/04
10	REVISION	By	07/26/04

Client/Project	Scale
JORDAN TANNIS CONCORD PROPERTIES 114 RICHMOND ROAD RESIDENTIAL DEVELOPMENT OTTAWA, ON, CANADA	1:300
Permit-Seal	0 3 6 9 12m
Project No. 160402212	Scale 0 3 6 9 12m
Drawing No. Sheet	Revision
ECDS-1	4 of 6