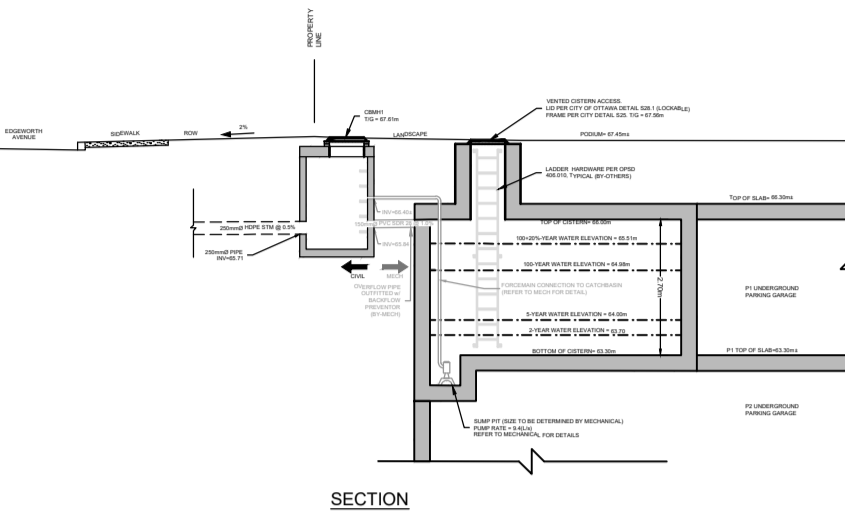
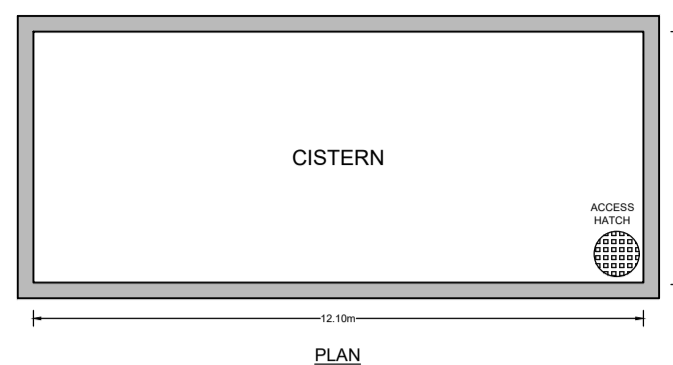
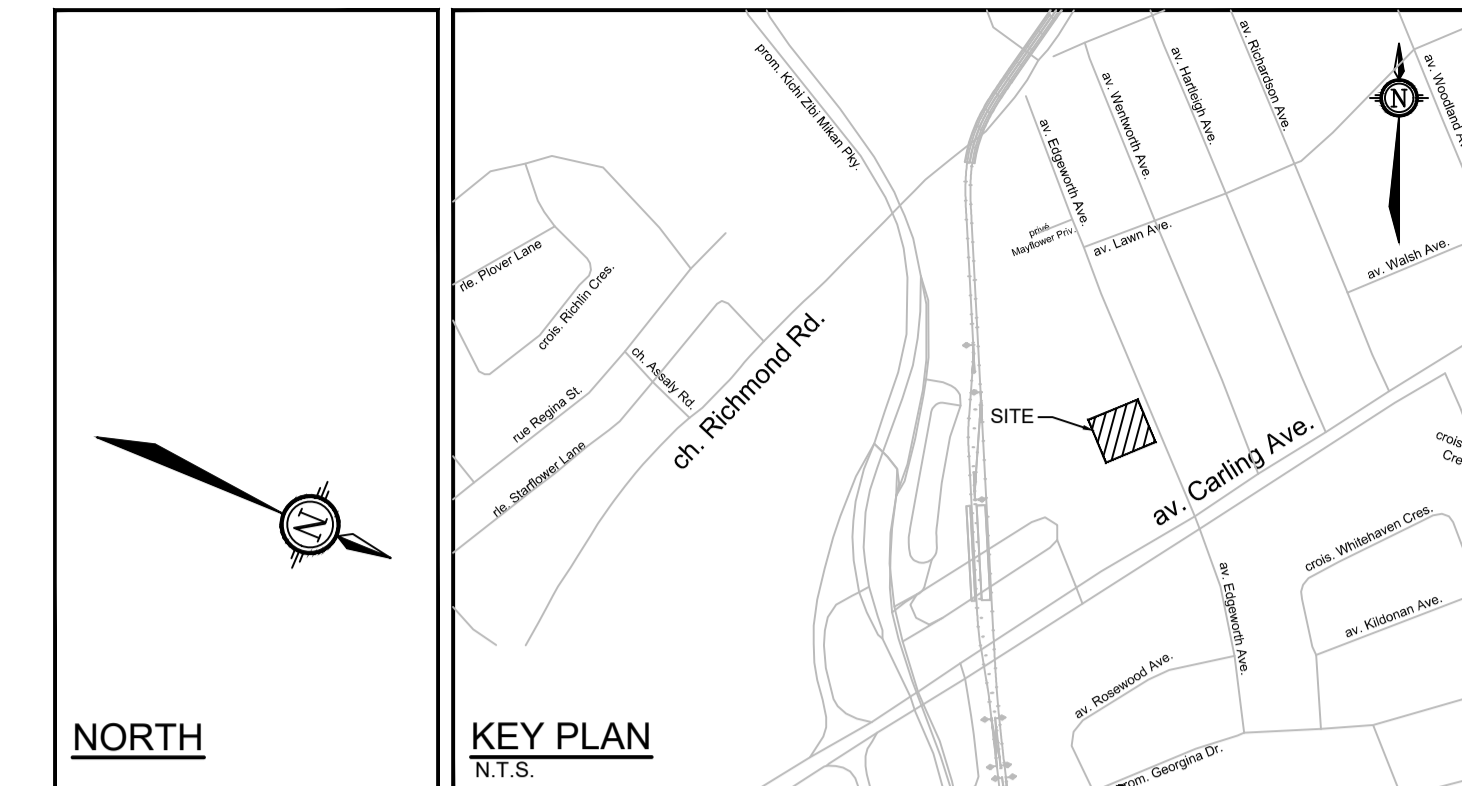
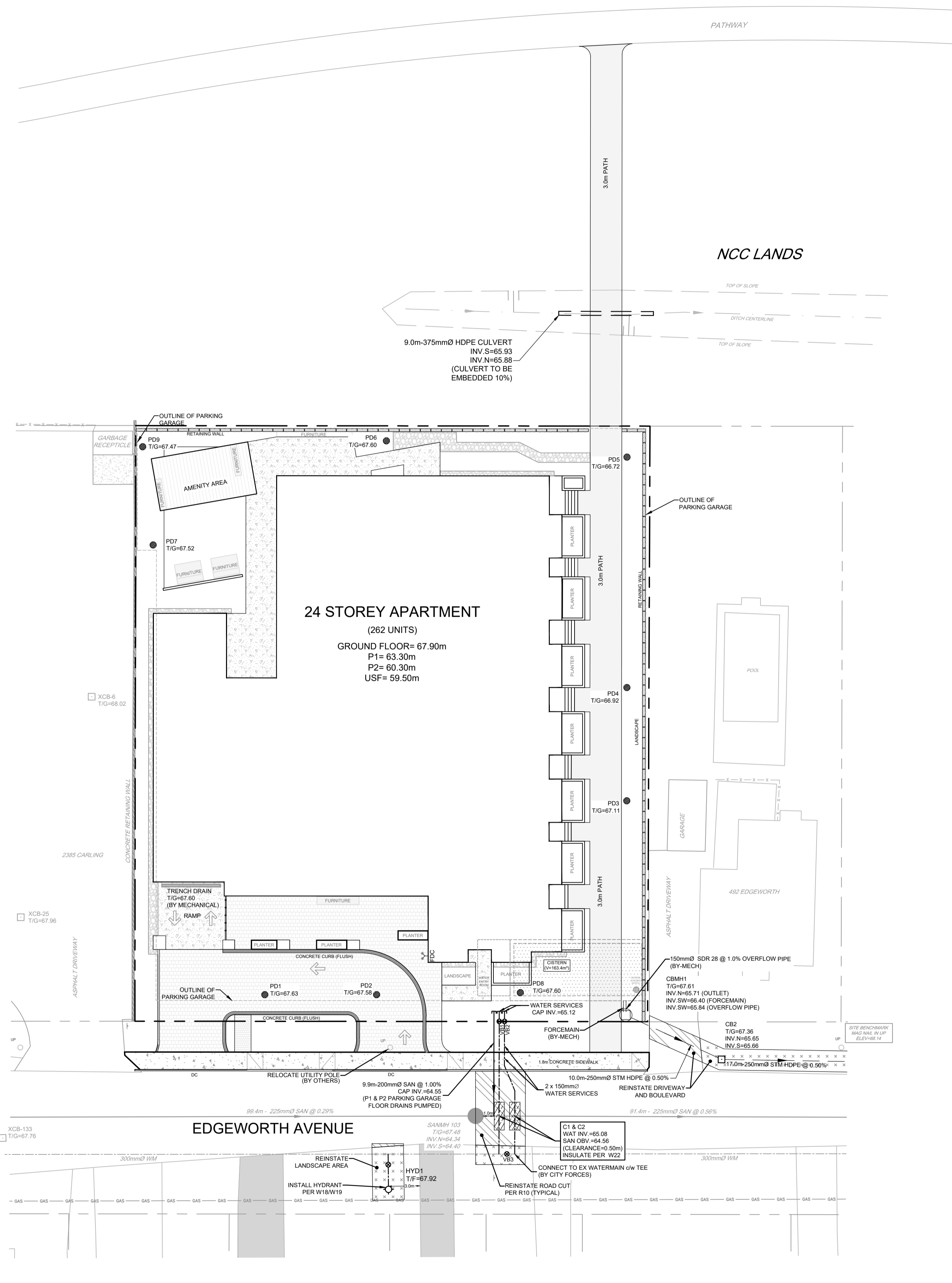


**CISTERN DESIGN**  
1:150



CISTERN ANALYSIS			
DESIGN EVENT	DISCHARGE RATE	REQUIRED STORAGE VOLUMES	PROVIDED
1:2 YR	9.4 L/s	24.2 m <sup>3</sup>	>163.4 m <sup>3</sup>
1:5 YR		42.4 m <sup>3</sup>	
1:100 YR		101.6 m <sup>3</sup>	
1:100+20%		133.7 m <sup>3</sup>	

NOTES:  
1. REFER TO ARCHITECTURAL AND MECHANICAL PLANS FOR DETAILS.



**LEGEND**

	SANITARY MANHOLE, SEWER & FLOW DIRECTION		HYDRANT C/W VALVE & LEAD
	STORM SEWER & FLOW DIRECTION		CAP
	WATER SERVICE AND DIAMETER		PODIUM DRAIN
	VALVE & VALVE BOX		FIRE DEPARTMENT CONNECTION
	WATERMAIN AND DIAMETER		RETAINING WALL
	PROPOSED CATCHBASIN		

- GENERAL NOTES:**
- DIMENSIONS AND LAYOUT INFORMATION SHALL BE CONFIRMED PRIOR TO COMMENCEMENT OF CONSTRUCTION.
  - THE ORIGINAL TOPOGRAPHY AND GROUND ELEVATIONS, SERVICING AND SURVEY INFORMATION SHOWN ON THIS PLAN ARE SUPPLIED FOR INFORMATION PURPOSES ONLY. IT SHALL BE THE RESPONSIBILITY OF THE CONTRACTOR TO VERIFY THE ACCURACY OF ALL INFORMATION OBTAINED FROM THIS PLAN.
  - CO-ORDINATE AND SCHEDULE ALL WORK WITH OTHER TRADES AND CONTRACTORS.
  - BEFORE COMMENCING CONSTRUCTION, PROVIDE PROOF OF COMPREHENSIVE ALL RISK AND OPERATIONAL LIABILITY INSURANCE INCLUDING BLASTING, INSURANCE POLICY TO NAME THE OWNER, ENGINEER AND THE CITY AS CO-INSURED.
  - CONNECT TO EXISTING SYSTEMS AS DETAILED, INCLUDING ALL RESTORATION WORK NECESSARY TO REINSTATE SURFACES TO EXISTING CONDITIONS OR BETTER.
  - DETERMINE THE EXACT LOCATION, SIZE, MATERIAL AND ELEVATION OF ALL EXISTING UTILITIES PRIOR TO COMMENCING CONSTRUCTION. PROTECT AND ASSUME RESPONSIBILITY FOR ALL EXISTING UTILITIES WHETHER OR NOT SHOWN ON THESE DRAWINGS.
  - OBTAIN AND PAY FOR ALL NECESSARY PERMITS AND APPROVALS BEFORE COMMENCING CONSTRUCTION.
  - RESTORE ALL TRENCHES AND SURFACE FEATURES TO EXISTING CONDITIONS OR BETTER AND TO THE SATISFACTION OF MUNICIPAL AUTHORITIES.
  - REMOVE FROM SITE ALL DEBRIS AND EXCESS EXCAVATED MATERIAL UNLESS OTHERWISE INSTRUCTED BY THE ENGINEER.
  - ALL ELEVATIONS ARE GEODETIC AND UTILIZE METRIC UNITS.
  - REFER TO GEOTECHNICAL INVESTIGATION OTT-23002437-80 - FINAL REPORT, PREPARED BY EXP SERVICES FOR SUBSURFACE CONDITIONS AND CONSTRUCTION RECOMMENDATIONS.
  - PERFORATED PIPE SUB-DRAINS TO BE PROVIDED AT SUBGRADE LEVEL EXTENDING FROM THE ROADSIDE CATCHBASIN FOR A DISTANCE OF 3.0m, PARALLEL TO THE CURB IN TWO DIRECTIONS.

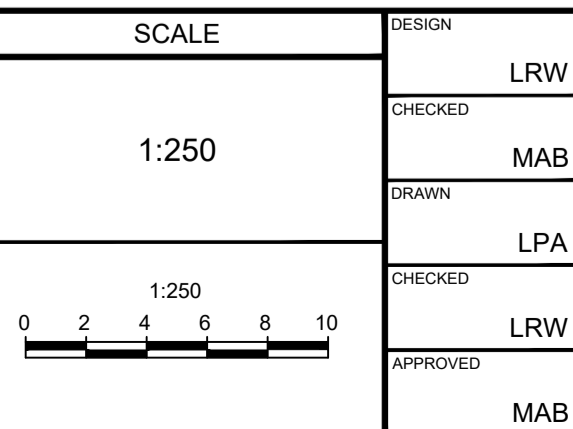
- SEWER NOTES:**
- SPECIFICATIONS:  
ITEM: STORM SEWER  
SPEC. No.: HDPE  
REFERENCE: (CLASS SPECIFIED ON PROFILE DRAWINGS)
  - INSULATE ALL PIPES (SAN/STM) THAT HAVE LESS THAN 1.5m COVER WITH 50mmX1200mm HI-40 INSULATION. PROVIDE 150mm CLEARANCE BETWEEN PIPE AND INSULATION.
  - PIPE BEDDING, COVER AND BACKFILL ARE TO BE COMPACTED TO AT LEAST 95% OF THE STANDARD PROCTOR MAXIMUM DRY DENSITY. THE USE OF CLEAR CRUSHED STONE AS A BEDDING LAYER SHALL NOT BE PERMITTED.
  - SEWER SERVICE CONNECTIONS PER CITY OF OTTAWA DETAILS S11 AND S11.1.
  - THE SITE SERVICING CONTRACTOR SHALL PERFORM FIELD TESTS FOR QUALITY CONTROL OF ALL SANITARY SEWERS. LEAKAGE TESTING SHALL BE COMPLETED IN ACCORDANCE WITH OPS5 410.07.16 AND 407.07.24. DYE TESTING IS TO BE COMPLETED ON ALL SANITARY SERVICES TO CONFIRM PROPER CONNECTION TO THE SANITARY SEWER MAIN. THE FIELD TESTS SHALL BE PERFORMED IN THE PRESENCE OF THE ENGINEER.
  - CONTRACTOR TO TELEPHONE (CCTV) ALL PROPOSED SEWERS, 200mm OR GREATER PRIOR TO BASE COURSE ASPHALT. UPON COMPLETION OF CONTRACT, THE CONTRACTOR IS RESPONSIBLE TO FLUSH AND CLEAN ALL SEWERS & APPURTENANCES.
  - BUILDING FOUNDATION DRAIN PUMPED TO STORM SERVICE DOWNSTREAM OF CISTERN CLEAN OUT.
  - PODIUM DRAINS ROUTED TO CISTERN (BY MECHANICAL).

- WATERMAIN NOTES:**
- GENERAL:  
ITEM: WATERMAIN TRENCHING  
REFERENCE: CITY OF OTTAWA  
THERMAL INSULATION IN SHALLOW TRENCHES  
CITY OF OTTAWA  
WATERMAIN CROSSING BELOW SEWER / OVER SEWER  
W22 / W25.2  
CITY OF OTTAWA
  - THE WATERMAIN SHALL BE PVC DR 18 PER MATERIAL SPECIFICATION MW-18.1, UNLESS OTHERWISE INDICATED.
  - SUPPLY AND CONSTRUCT ALL WATERMANS AND APPURTENANCES IN ACCORDANCE WITH CITY OF OTTAWA STANDARDS AND SPECIFICATIONS. EXCAVATION, INSTALLATION, BACKFILL AND RESTORATION OF ALL WATERMANS BY THE CONTRACTOR. CONNECTIONS AND SHUT-OFFS AT THE MAIN AND CHLORINATION OF THE WATER SYSTEM SHALL BE PERFORMED BY CITY OFFICIALS.
  - WATERMAIN SHALL BE MINIMUM 2.4m DEPTH BELOW GRADE UNLESS OTHERWISE INDICATED.
  - PROVIDE MINIMUM 0.50m CLEARANCE BETWEEN OUTSIDE OF PIPES AT ALL CROSSINGS.

NOTE:  
THE POSITION OF ALL POLE LINES, CONDUITS, WATERMANS, SEWERS AND OTHER UNDERGROUND AND OVERGROUND UTILITIES AND STRUCTURES IS NOT NECESSARILY SHOWN ON THE CONTRACT DRAWINGS, AND WHERE SHOWN, THE ACCURACY OF THE POSITION OF SUCH UTILITIES AND STRUCTURES IS NOT GUARANTEED. BEFORE STARTING WORK, DETERMINE THE EXACT LOCATION OF ALL SUCH UTILITIES AND STRUCTURES AND ASSUME ALL LIABILITY FOR DAMAGE TO THEM.

No.	REVISION	DATE	BY
2.	REVISED PER CITY COMMENTS	MAR 24/26	MAB
1.	ISSUED WITH SITE PLAN APPLICATION	OCT 08/25	MAB

DESIGN	LRW
CHECKED	MAB
DRAWN	LPA
CHECKED	LRW
APPROVED	MAB



**FOR REVIEW ONLY**

L.R. WILSON  
100160065  
PROVINCE OF ONTARIO

M.A. BISSETT  
2026.03.24  
PROVINCE OF ONTARIO

**NOVATECH**  
Engineers, Planners & Landscape Architects  
Suite 200, 240 Michael Cowpland Drive  
Ottawa, Ontario, Canada K2M 1P6

Telephone (613) 254-9643  
Facsimile (613) 254-5867  
Website www.novatech-eng.com

CITY OF OTTAWA  
500 & 508 EDGEWORTH AVENUE

**SERVICING PLAN**

PROJECT No. 121109  
REV # 2  
DRAWING No. 121109-GP

M:\2021\121109\CAD\CAD\121109-GP.dwg, Layout1-PLANS-A.1, Mar. 28, 2026, 2:33pm, jbanz