

GENERAL NOTES:

- DO NOT SCALE DRAWINGS;
- NOTES ARE APPLICABLE TO ALL DRAWINGS IN THE SET;
- Fotenn Consultants Inc. IS NOT RESPONSIBLE FOR ACCURACY OF BASE INFORMATION;
- REFER TO CIVIL ENGINEERING DRAWINGS FOR GRADING & SITE SERVICING INFORMATION;
- THE CONTRACTOR IS RESPONSIBLE FOR CONFIRMING SITE CONDITIONS AND REPORTING ANY DISCREPANCIES TO THE LANDSCAPE ARCHITECT;
- THE CONTRACTOR IS RESPONSIBLE FOR CONFIRMING EXACT LOCATIONS OF ALL UNDERGROUND SERVICES AND OBTAINING CLEARANCE FROM ALL APPLICABLE UTILITIES. PROPOSED WORKS FOUND TO BE IN CONFLICT WITH UNDERGROUND SERVICES MAY BE ADJUSTED AT THE DIRECTION OF THE LANDSCAPE ARCHITECT;
- LANDSCAPE ELEMENTS SHOWN ARE SUBJECT TO THE FINAL LOCATION OF UNDERGROUND SERVICES AND UTILITIES;
- DO NOT INSTALL TREES ON PROPERTY / LOT LINES OR WITHIN DRAINAGE EASEMENTS;
- PERFORM WORK IN ACCORDANCE WITH DETAILS AND SPECIFICATIONS;
- ALL PLANT MATERIAL SHALL BE No. 1 NURSERY STOCK AND SHALL MEET OR EXCEED THE SPECIFICATION OF THE Canadian Standards for Nursery Stock, AS PUBLISHED BY THE Canadian Nursery Landscape Association;
- SPECIES SUBSTITUTIONS ARE NOT PERMITTED WITHOUT PRIOR WRITTEN APPROVAL OF THE LANDSCAPE ARCHITECT.

IMPORTANT NOTICE FOR CONTRACTOR:

THE CITY OF OTTAWA REQUIRES A Certificate of Completion (F1) Landscape Works TO BE SUBMITTED AND SEALED BY THE LANDSCAPE ARCHITECT. CONTRACTORS ARE RESPONSIBLE FOR FAMILIARIZING THEMSELVES WITH THE REQUIREMENTS OF THIS PROCESS AND PROVIDING SUFFICIENT NOTICE TO THE LANDSCAPE ARCHITECT TO CONDUCT SITE REVIEWS DURING INSTALLATION OF TREES. THE 1 YEAR WARRANTY PERIOD SHALL NOT COMMENCE UNTIL THE LANDSCAPE ARCHITECT HAS SUBMITTED THE F1 Certificate.

PRIOR TO INSTALLATION OF TREES, THE DEVELOPER WILL CONTACT THE PLANNING AND GROWTH MANAGEMENT AND FORESTRY SERVICES TO REVIEW THE SPECIES AND LOCATION OF TREES.

Copyright Reserved
The Copyrights to all designs and drawings are the property of Fotenn Consultants Inc. Unauthorized reproduction or use is forbidden. DO NOT SCALE DRAWING

Copyright réservés
Les droits d'auteur à tous les modèles et dessins sont la propriété de Fotenn Consultants Inc. Reproduction ou utilisation non autorisée est interdite. NE PAS L'ÉCHELLE DE DESSIN

Client / Client



key plan / plan repère



legend / légende

- PROPERTY LINE
- DECIDUOUS TREES (SEE PLANTING NOTES & SCHEDULE FOR SPECIES AND QUANTITIES)
- CONIFEROUS TREES (SEE PLANTING SCHEDULE FOR SPECIES AND QUANTITIES)
- 1.8m HIGH PRIVACY FENCE
- PRIVACY SCREEN ON RETAINING WALL PROVIDE ENGINEER-STAMPED SHOP DRAWINGS FOR CONNECTION / FASTENING POINTS TO RETAINING WALL
- PAVING TYPE 1 - ASPHALT
- PAVING TYPE 2 - CONCRETE
- PAVING TYPE 3 - UNIT PAVERS
- PAVING TYPE 4 - DECKING
- PAVING TYPE 5 - GRANULAR
- RIVERWASH STONE DRIP STRIP
- PLANTING AREA
- LAWN - ARTIFICIAL TURF

rev'n	description / la description	yyyy/mm/dd
04	re-issue for ZBLA	2026/03/23
03	issue for ZBLA	2025/11/03
02	issue for coordination	2025/08/06
01	issue for Client review	2025/07/16
00	issue for Client review	2025/07/15

FOTENN Planning + Design
420 O'Connor Street
Ottawa, ON, CANADA K2P 1W4
613.730.5709
fotenn.com

north / le nord stamp / le cachet

project / projet
500 & 508 EDGEWORTH AVENUE

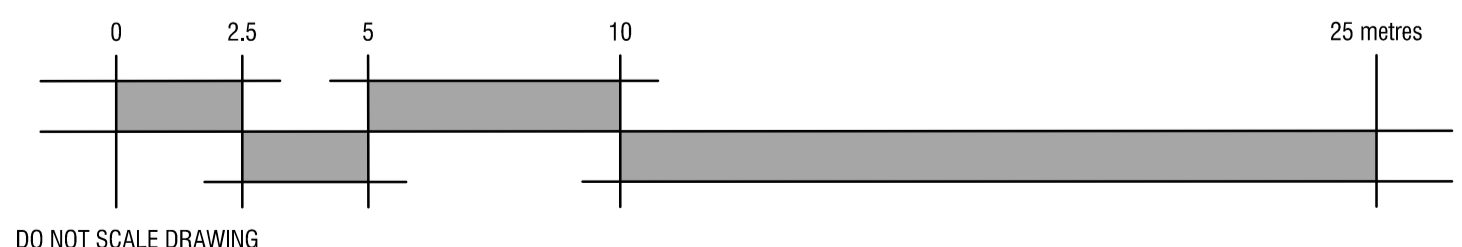
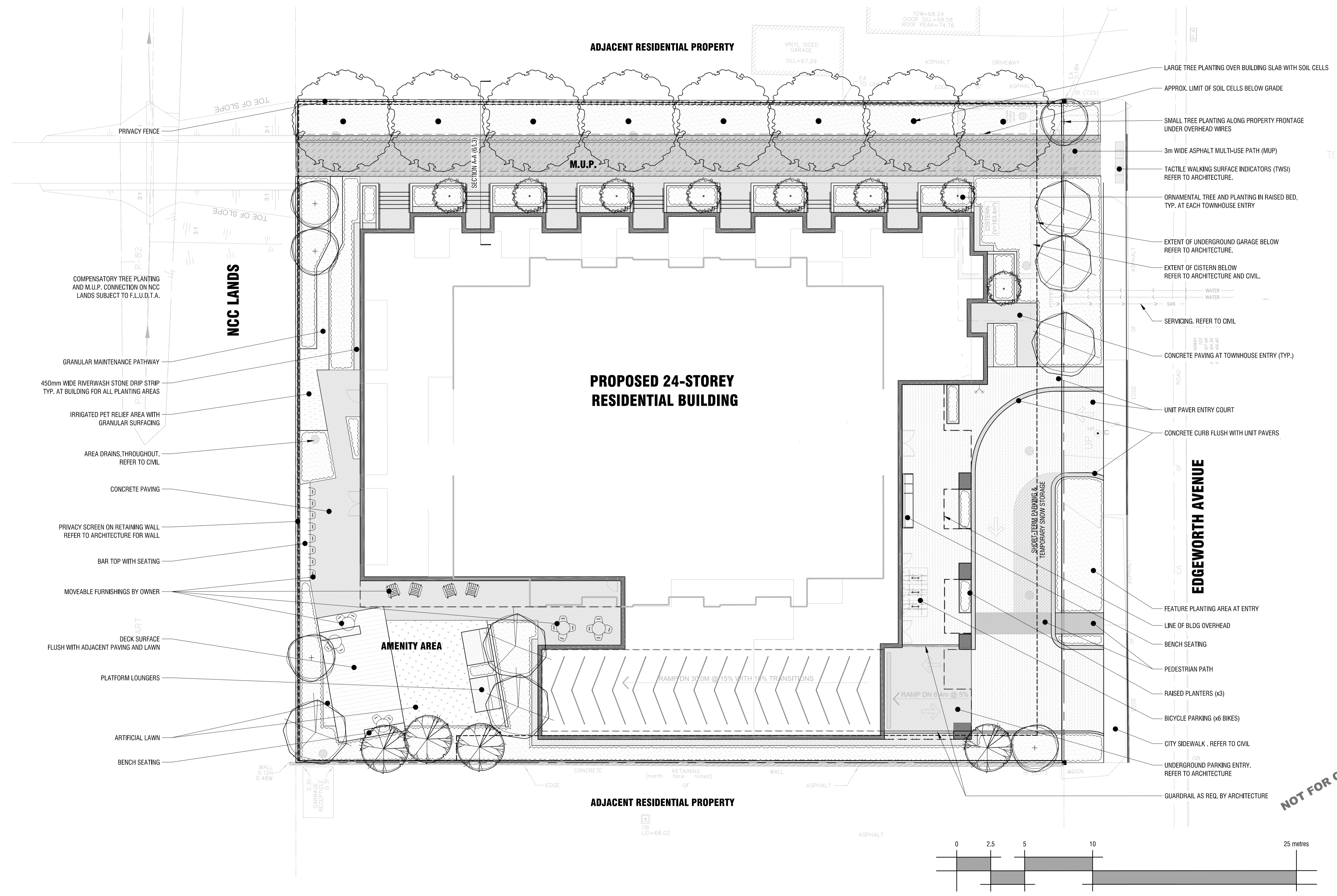
drawing / dessin

LANDSCAPE PLAN

designed / conçu	drawn / dessiné	reviewed / examiné
BM / DF	BM	DF
date	project number / No. du projet	
JAN 2025	-	

drawing number / No. du dessin

L1



DO NOT SCALE DRAWING

NOT FOR CONSTRUCTION

1 LANDSCAPE PLAN
L1 1:150

PLOT INFORMATION: DWG NAME: P:\PROJECTS\Ottawa\Newest\500 and 508 Edgeworth Ave\landscape\Architectural\Site\Drawings\500&508Edgeworth-SHEET-Landscape.dwg PLOT DATE: 2025-02-23 10:26 AM SHEET SIZE: ISO Full (841x1190mm) PLOTTED BY: Benama, Michael LAST SAVED BY: benama