

**BIRD SAFE TREATMENTS (APPLICABLE TO ALL ELEVATIONS):**

**a) Reduced Reflectivity at Grade**  
Highly reflective glass is avoided within the first 16 metres above grade, where the majority of bird collisions occur. Spandrel panels, fritted glazing, and opaque materials are prioritized at podium levels.

**b) Landscape Placement Coordination**  
Trees and dense plantings are coordinated with façade treatments to avoid creating the illusion of reflected habitat. Where vegetation is located directly adjacent to glazing, bird-safe glass treatment is specified. No clear glass corners are located directly adjacent to major tree clusters.

**c) Avoidance of Through-Building Views**  
Ground-floor amenity areas and lobbies are designed to prevent direct "see-through" conditions. Where transparency is required, glazing includes bird-safe markers.

**Podium-Level Bird-Safe Glazing**  
Since collisions are most frequent within the lower 16 m:  
Glazing incorporates visible markers using frit, ceramic patterns, acid-etched, or UV-patterned glass.  
Pattern density follows the 2x4 rule (maximum 50mm x 100mm spacing).  
Spandrel and solid panels are increased along heavily landscaped frontages.  
Glass at corners is treated to eliminate transparent edge conditions.  
Guardrails use fritted or opaque laminated glass rather than clear glazing.

MATERIAL LEGEND			
<b>A</b>	BRICK Manufacturer: TBT Color: TBD	<b>E</b>	SPANDREL PANEL Manufacturer: TBT Color: TBD
<b>B</b>	CURTAIN WALL Manufacturer: TBD Color: Clear Glass	<b>W1</b>	WINDOW Manufacturer: TBT
<b>C</b>	CONCRETE Manufacturer: TBD Color: TBD	<b>W2</b>	WINDOW Manufacturer: TBD
<b>D</b>	BRICK Manufacturer: TBD Color: TBD	<b>W3</b>	WINDOW Manufacturer: TBD
		<b>W4</b>	WINDOW Manufacturer: TBD
		<b>D1</b>	PATIO DOOR Manufacturer: TBD
		<b>D2</b>	GARAGE DOOR Manufacturer: TBD 4.6m H x 6.3m W
		<b>D3</b>	GARAGE DOOR Manufacturer: TBD 4.6m H x 3m W
		<b>D4</b>	LOBBY / COMM. ENTRANCE DOOR Manufacturer: TBD Color: Clear Glass
		<b>D5</b>	EXIT DOOR Manufacturer: TBD Color: TBD

NOTE: Bird-safe glazing treatment provided on all exterior glazing within the first 16m above grade and adjacent to significant landscape features, in accordance with CSA A460.19 and City of Ottawa High-Rise Design Guidelines.

NOTES GÉNÉRALES General Notes

1. Ces documents d'architecture sont la propriété exclusive de NEUF architect(e)s et ne peuvent être utilisés, reproduits ou copiés sans autorisation écrite préalable. / These architectural documents are the exclusive property of NEUF architect(e)s and cannot be used, copied or reproduced without written pre-authorization.

2. Les dimensions apparaissant aux documents doivent être vérifiées par l'entrepreneur avant le début des travaux. / All dimensions which appear on the documents must be verified by the contractor before to start the work.

3. Veuillez aviser l'architecte de toute dimension erreur et/ou divergences entre ces documents et ceux des autres professionnels. / The architect must be notified of all errors, omissions and discrepancies between these documents and those of the others professionals.

4. Les dimensions sur ces documents doivent être lues et non mesurées. / The dimensions on these documents must be read and not measured.

ARPEUTEUR Surveyor  
**Annis, O'Sullivan, Vollebek Ltd.**  
14 Concourse Gate, Ottawa ON K2E 7S6  
T 613 727 0850 Aovltd.com

PROMOTEUR Developer  
**Vuze Construction**  
Laperrière Ave 1600, Ottawa ON K1Z 6P5  
T 619 664 4195 Vuzeconstruction.com

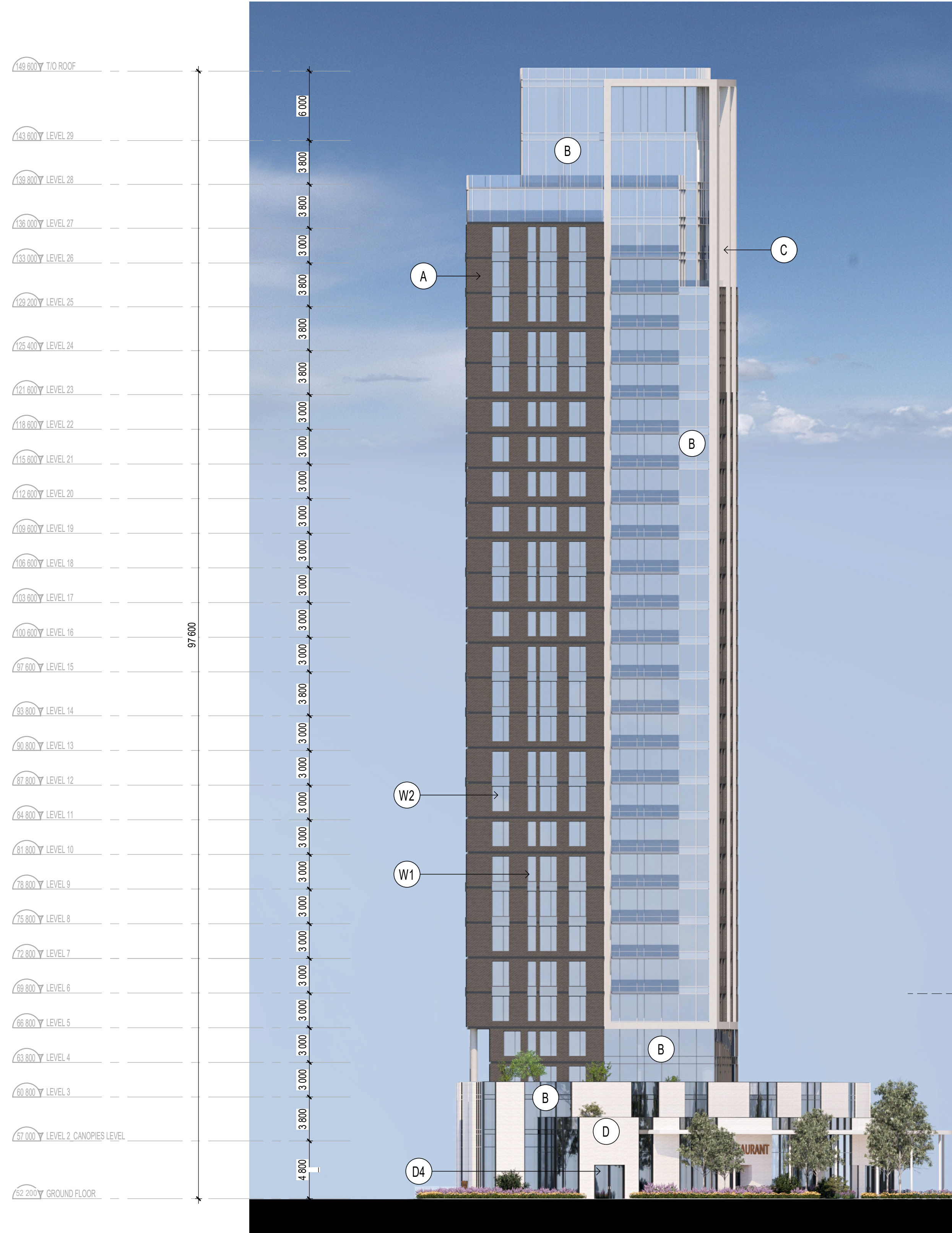
PLANIFICATEUR Planner  
**Fotenn Planning and Design**  
420 O'Connor Street, Ottawa ON K2P 0P4  
T 613 730 5709 Fotenn.com

ARCHITECTURE DE PAYSAGE Landscape Architect  
**Projet Paysage**  
24 Montroyal West Suite 204, Montreal QC H2T 2S2  
T 514 849 7700 Projetpaysage.com

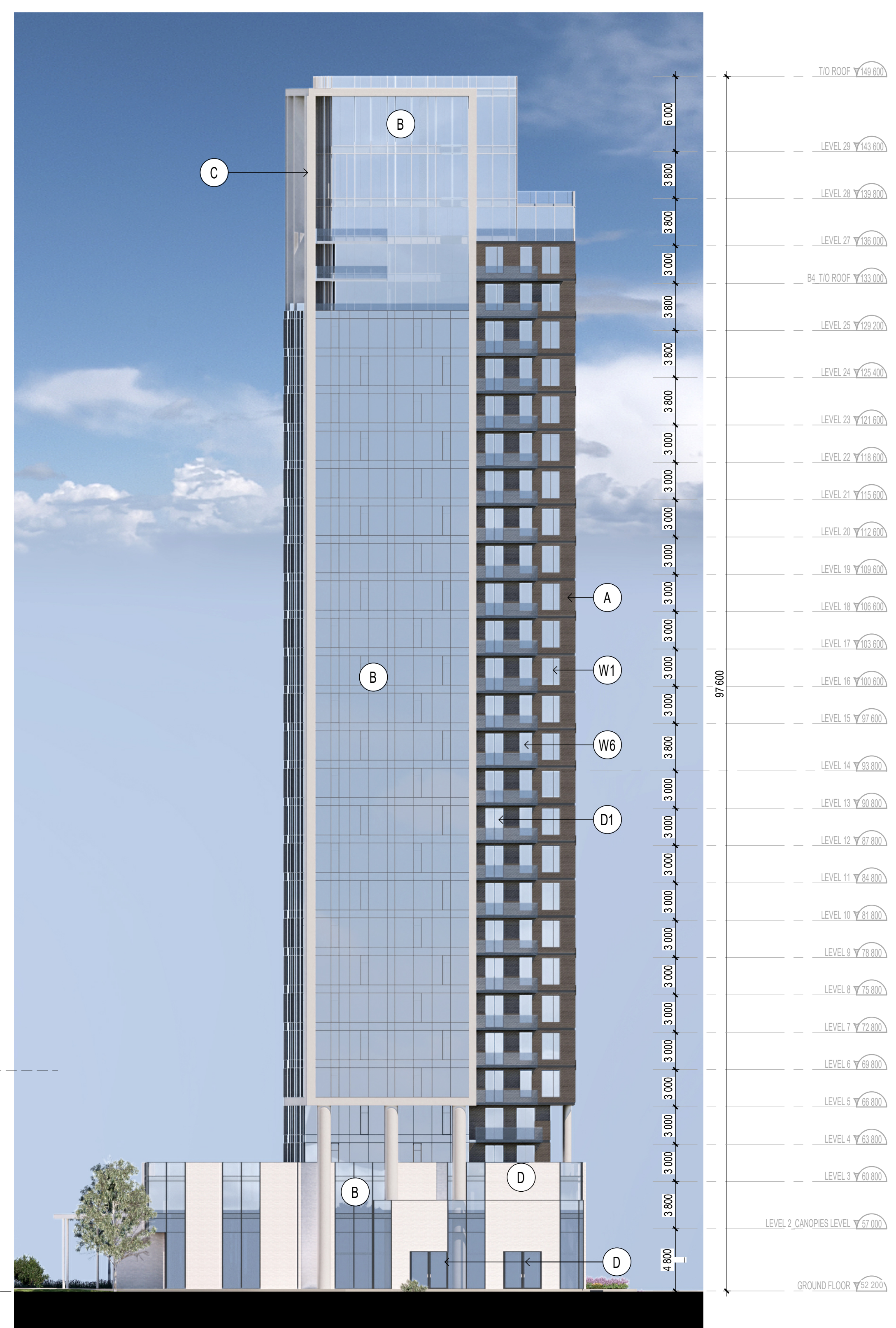
CIVIL Civil  
**EXP**  
1001 Boulevard De Maisonneuve Ouest, Bureau 800, Montreal QC H3A 3C2  
T 514 931 1080 Exp.com

ARCHITECTES Architect  
**NEUF architect(e)s** SENCRL  
630, St-Jacques, Montréal, Québec H3B 1S6  
T 514 847 1117 NEUFarchitectes.com

SCEAU / Seal



**SOUTH ELEVATION\_B1**  
1:250



**NORTH ELEVATION\_B1**  
1:250

NOTES

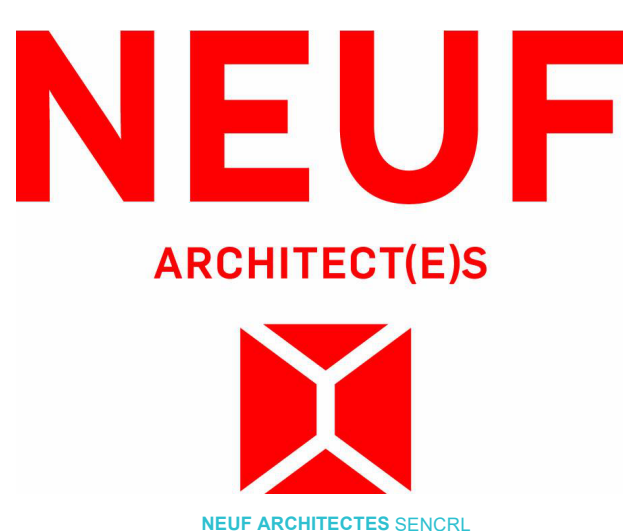
FILE NUMBER D02-02-25-0038 & D07-12-25-0073  
PLAN NUMBER # 19417

ARCHITECTURE DE PAYSAGE Landscape Architect  
**Projet Paysage**  
24 Montroyal West Suite 204, Montreal QC H2T 2S2  
T 514 849 7700 Projetpaysage.com

CIVIL Civil  
**EXP**  
1001 Boulevard De Maisonneuve Ouest, Bureau 800, Montreal QC H3A 3C2  
T 514 931 1080 Exp.com

ARCHITECTES Architect  
**NEUF architect(e)s** SENCRL  
630, St-Jacques, Montréal, Québec H3B 1S6  
T 514 847 1117 NEUFarchitectes.com

SCEAU / Seal



CLIENT Client

OUVRAGE Project  
**1015 TWEDDLE ROAD,  
ORLÉANS, ON, K4A 3P4**

EMPLACEMENT Location NO PROJET No.  
OTTAWA, ON 13383

NO	RÉVISION	DATE (aa-mm-jj)
0	SPA SUBMISSION	2025.05.30
1	SPA RESUBMISSION	2025.09.26
2	SPA RESUBMISSION	2025.11.22

DESSINÉ PAR Drawn by  
AT

VERIFIÉ PAR Checked by  
AC

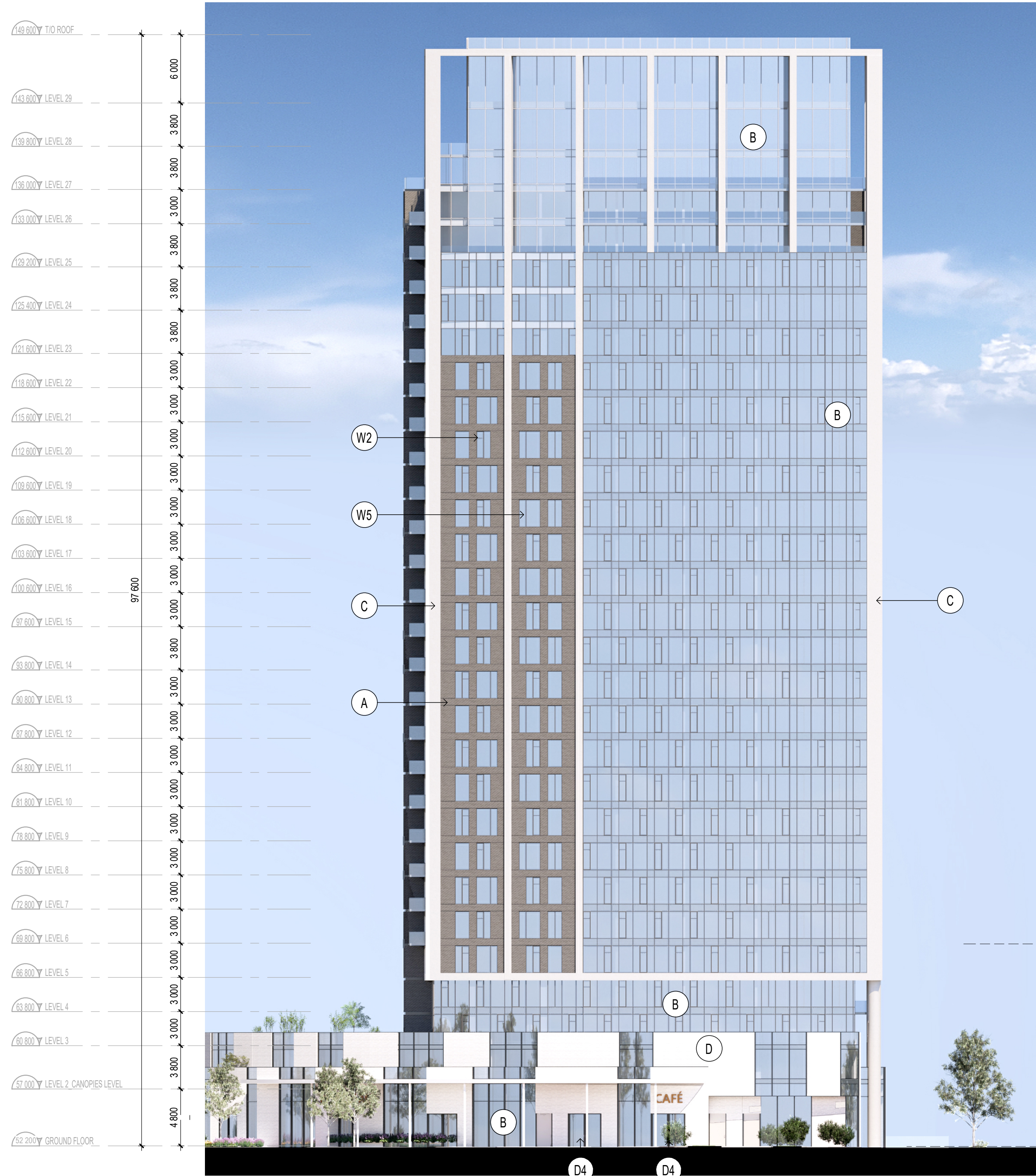
DATE (aa.mm.jj) 30/05/25

ECHELLE Scale As indicated

TITRE DU DESSIN Drawing Title

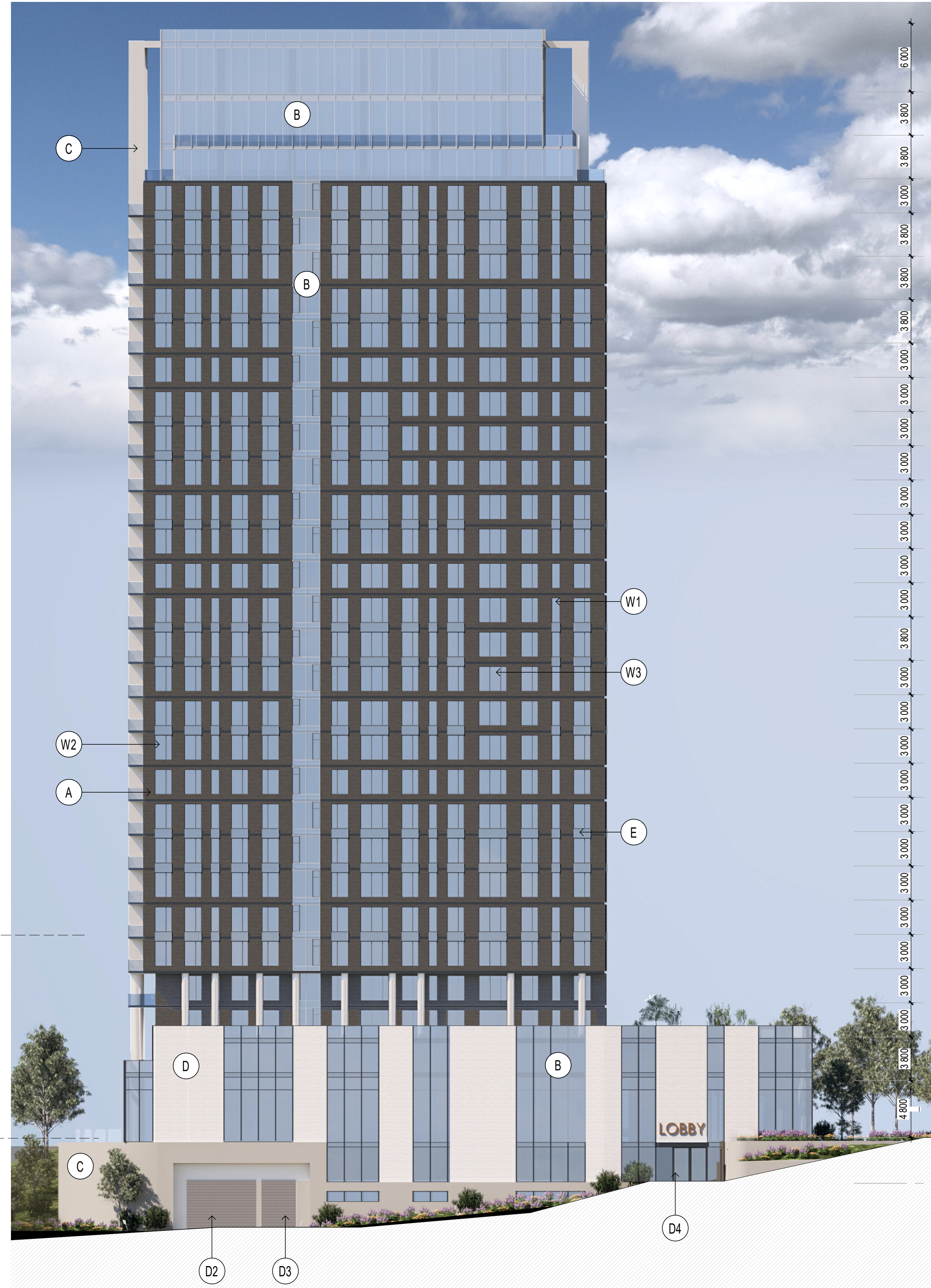
**ELEVATIONS - B1**

Autodesk Docs://13383\_1015 TWEDDLE RD\_R24/TRIM\_13383\_ARC\_PRE\_A23\_IMPLANTATION\_R24.rvt



**EAST ELEVATION\_B1**  
1: 250

2  
002



**WEST ELEVATION\_B1**  
1: 250

1  
002

MATERIAL LEGEND			
(A) BRICK Manufacturer: TBT Color: TBD	(E) SPANDREL PANEL Manufacturer: TBT Color: TBD	(W4) WINDOW Manufacturer: TBD	(D4) LOBBY / COMM ENTRANCE DOOR Manufacturer: TBD Color: Clear Glass
(B) CURTAIN WALL Manufacturer: TBD Color: Clear Glass	(W1) WINDOW Manufacturer: TBT	(D1) PATIO DOOR Manufacturer: TBD	(D5) EXIT DOOR Manufacturer: TBD Color: TBD
(C) CONCRETE Manufacturer: TBD Color: TBD	(W2) WINDOW Manufacturer: TBD	(D2) GARAGE DOOR Manufacturer: TBD 4.6m H x 6.3m W	
(D) BRICK Manufacturer: TBD Color: TBD	(W3) WINDOW Manufacturer: TBD	(D3) GARAGE DOOR Manufacturer: TBD 4.6m H x 3m W	

NOTE: Bird-safe glazing treatment provided on all exterior glazing within the first 16m above grade and adjacent to significant landscape features, in accordance with CSA A460:19 and City of Ottawa High-Rise Design Guidelines.

NOTES GÉNÉRALES General Notes

- Ces documents d'architecture sont la propriété exclusive de NEUF architecte(s) et ne peuvent être utilisés, reproduits ou copiés sans autorisation écrite préalable. / These architectural documents are the exclusive property of NEUF architecte(s) and cannot be used, copied or reproduced without written pre-authorization.
- Les dimensions apparaissant aux documents doivent être vérifiées par l'entrepreneur avant le début des travaux. / All dimensions which appear on the documents must be verified by the contractor before to start the work.
- Veuillez aviser l'architecte de toute dimension erreur et/ou divergences entre ces documents et ceux des autres professionnels. / The architect must be notified of all errors, omissions and discrepancies between these documents and those of the others professionals.
- Les dimensions sur ces documents doivent être lues et non mesurées. / The dimensions on these documents must be read and not measured.

ARPEUTEUR Surveyor  
**Annis, O'Sullivan, Vollebek Ltd.**  
14 Concourse Gate, Ottawa ON K2E 7S6  
T 613 727 0850 Aovild.com

PROMOTEUR Developer  
**Vuze Construction**  
Laperrière Ave 1600, Ottawa ON K1Z 6P5  
T 619 664 4195 Vuzeconstruction.com

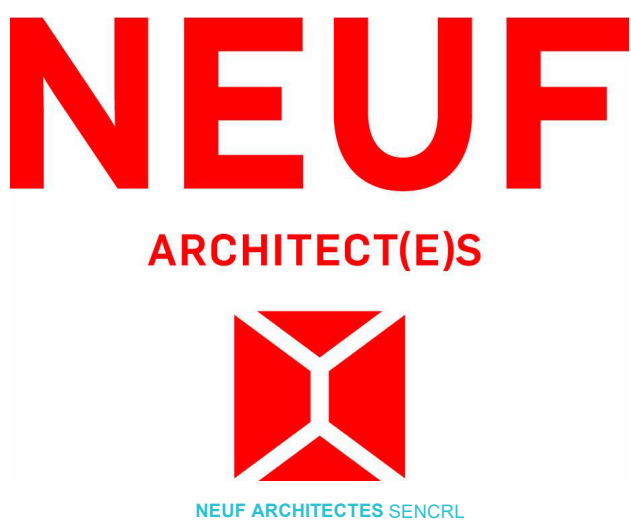
PLANIFICATEUR Planner  
**Fotenn Planning and Design**  
420 O'Connor Street, Ottawa ON K2P 0P4  
T 613 730 5709 Fotenn.com

ARCHITECTURE DE PAYSAGE Landscape Architect  
**Projet Paysage**  
24 Montroyal West Suite 204, Montreal QC H2T 2S2  
T 514 849 7700 Projetpaysage.com

CIVIL Civil  
**EXP**  
1001 Boulevard De Maisonneuve Ouest, Bureau 800, Montreal QC H3A 3C2  
T 514 931 1080 Exp.com

ARCHITECTES Architect  
**NEUF architect(e)s** SENCRIL  
630, St-J. René-Lévesque O. 32e étage, Montreal QC H3B 1S6  
T 514 847 1117 NEUFarchitectes.com

SCEAU / Seal



CLIENT Client

OUVRAGE Project  
**1015 TWEDDLE ROAD,  
ORLÉANS, ON, K4A 3P4**  
EMPLACEMENT Location NO PROJET No.  
OTTAWA, ON 13383

NO	RÉVISION	DATE (aa-mm-jj)
0	SPA SUBMISSION	2025.05.30
1	SPA RESUBMISSION	2025.09.26
2	SPA RESUBMISSION	2025.11.22

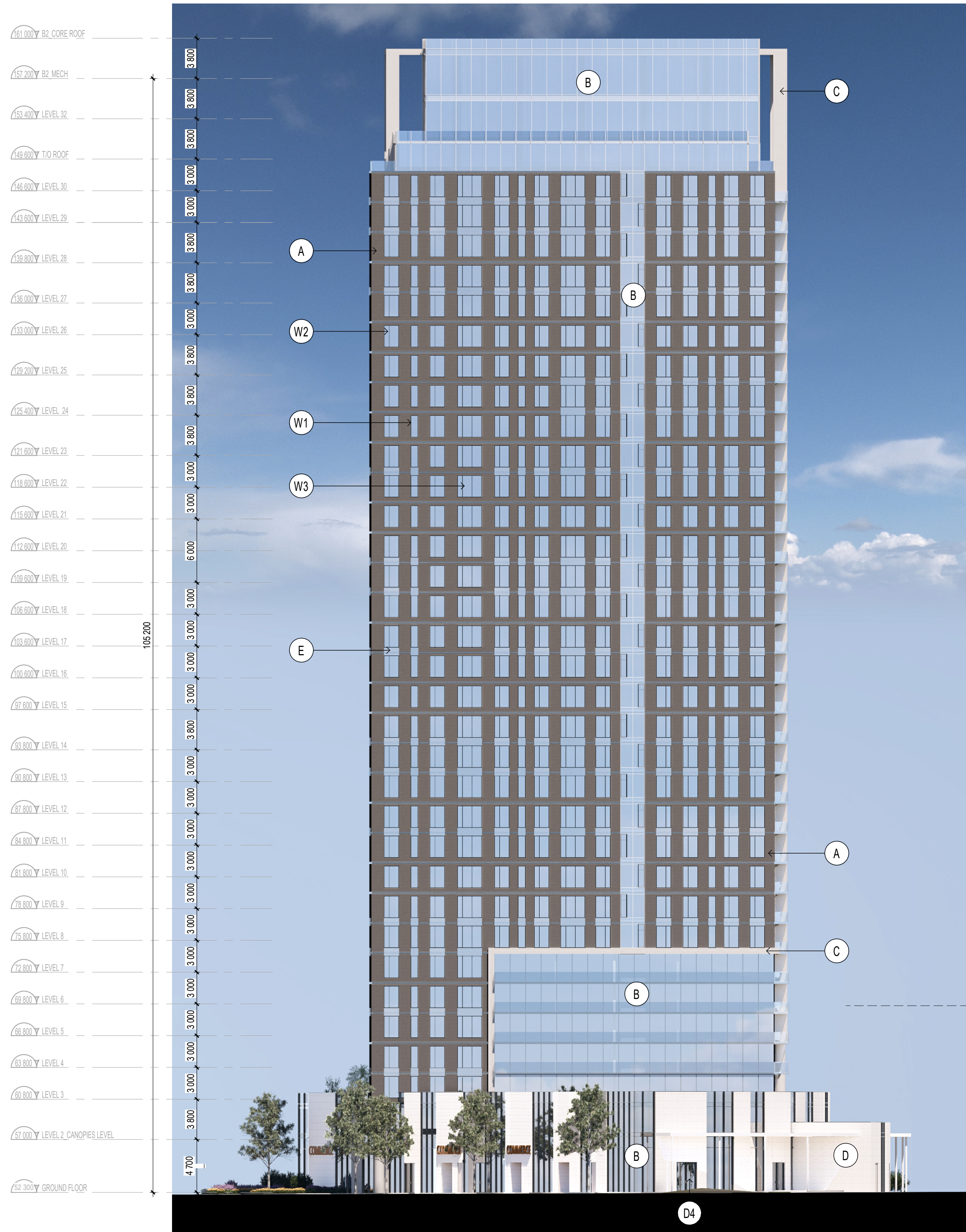
DESSINÉ PAR Drawn by  
AT  
DATE (aa.mm.jj)  
30/05/25  
TITRE DU DESSIN Drawing Title

VERIFIÉ PAR Checked by  
AC  
ECHELLE Scale  
As indicated

**ELEVATIONS - B1**

RÉVISION Revision NO. DESSIN Dwg Number  
**2** **002**

NOTES  
FILE NUMBER D02-02-25-0038 & D07-12-25-0073  
PLAN NUMBER # 19417



EAST ELEVATION\_B2

1:250

2  
003



WEST ELEVATION\_B2

1:250

1  
003

MATERIAL LEGEND			
<b>A</b> BRICK Manufacturer: TBT Color: TBD	<b>E</b> SPANDREL PANEL Manufacturer: TBT Color: TBD	<b>W4</b> WINDOW Manufacturer: TBD	<b>D4</b> LOBBY / COMM ENTRANCE DOOR Manufacturer: TBD Color: Clear Glass
<b>B</b> CURTAIN WALL Manufacturer: TBD Color: Clear Glass	<b>W1</b> WINDOW Manufacturer: TBT	<b>D1</b> PATIO DOOR Manufacturer: TBD	<b>D5</b> EXIT DOOR Manufacturer: TBD Color: TBD
<b>C</b> CONCRETE Manufacturer: TBD Color: TBD	<b>W2</b> WINDOW Manufacturer: TBD	<b>D2</b> GARAGE DOOR Manufacturer: TBD 4.6m H x 6.3m W	
<b>D</b> BRICK Manufacturer: TBD Color: TBD	<b>W3</b> WINDOW Manufacturer: TBD	<b>D3</b> GARAGE DOOR Manufacturer: TBD 4.6m H x 3m W	

NOTE: Bird-safe glazing treatment provided on all exterior glazing within the first 16m above grade and adjacent to significant landscape features, in accordance with CSA A460.19 and City of Ottawa High-Rise Design Guidelines.

NOTES

FILE NUMBER D02-02-25-0038 & D07-12-25-0073  
PLAN NUMBER # 19417

NOTES GÉNÉRALES General Notes

- Ces documents d'architecture sont la propriété exclusive de NEUF architect(e)s et ne peuvent être utilisés, reproduits ou copiés sans autorisation écrite préalable. / These architectural documents are the exclusive property of NEUF architect(e)s and cannot be used, copied or reproduced without written pre-authorization.
- Les dimensions apparaissant aux documents doivent être vérifiées par l'entrepreneur avant le début des travaux. / All dimensions which appear on the documents must be verified by the contractor before to start the work.
- Veuillez aviser l'architecte de toute dimension erreur et/ou divergences entre ces documents et ceux des autres professionnels. / The architect must be notified of all errors, omissions and discrepancies between these documents and those of the others professionals.
- Les dimensions sur ces documents doivent être lues et non mesurées. / The dimensions on these documents must be read and not measured.

ARPENTEUR Surveyor  
**Annis, O'Sullivan, Vollebek Ltd.**  
14 Concourse Gate, Ottawa ON K2E 7S6  
T 613 727 0850 Aovltd.com

PROMOTEUR Developer  
**Vuze Construction**  
Laperrière Ave 1600, Ottawa ON K1Z 6P5  
T 619 664 4195 Vuzeconstruction.com

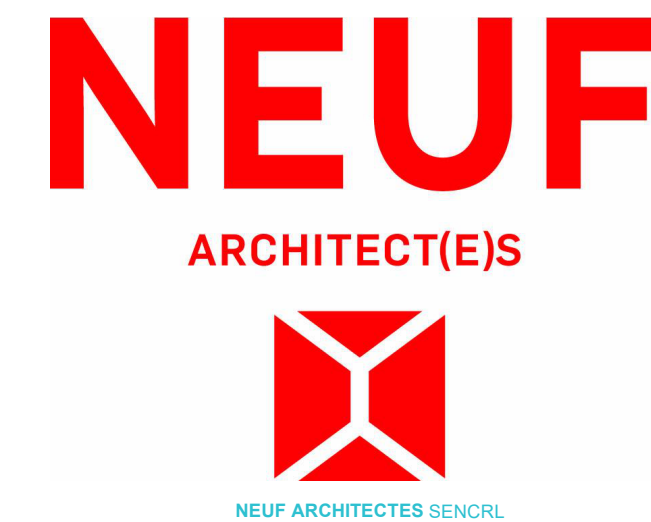
PLANIFICATEUR Planner  
**Fotenn Planning and Design**  
420 O'Connor Street, Ottawa ON K2P 0P4  
T 613 730 5709 Fotenn.com

ARCHITECTURE DE PAYSAGE Landscape Architect  
**Projet Paysage**  
24 Montroyal West Suite 201, Montreal QC H2T 2S2  
T 514 849 7700 Projetpaysage.com

CIVIL Civil  
**EXP**  
1001 Boulevard De Maisonneuve Ouest, Bureau 800, Montreal QC H3A 3C2  
T 514 931 1080 Exp.com

ARCHITECTES Architect  
**NEUF architect(e)s** SENCRIL  
630, boul. René-Lévesque O. 32e étage, Montreal QC H3B 1S6  
T 514 847 1117 NEUFarchitectes.com

SCEAU / Seal



CLIENT Client

OUVRAGE Project  
**1015 TWEDDLE ROAD,  
ORLÉANS, ON, K4A 3P4**

EMPLACEMENT Location NO PROJET No.  
OTTAWA, ON 13383

NO	RÉVISION	DATE (aa-mm-jj)
0	SPA SUBMISSION	2025.05.30
1	SPA RESUBMISSION	2025.09.26
2	SPA RESUBMISSION	2025.11.22

DESSINÉ PAR Drawn by  
AT

VERIFIÉ PAR Checked by  
AC

DATE (aa.mm.jj) 30/05/25

ECHELLE Scale As indicated

TITRE DU DESSIN Drawing Title

ELEVATIONS - B2

REVISION Revision NO. DESSIN Dwg Number  
**2** **003**

Autodesk Docs://13383\_1015 TWEDDLE RD\_R24/TRIM\_13383\_ARC\_PRE\_A23\_IMPLANTATION\_R24.rvt



NORTH ELEVATION\_B2  
1:250



SOUTH ELEVATION\_B2  
1:250

MATERIAL LEGEND			
<b>A</b> BRICK Manufacturer: TBT Color: TBD	<b>E</b> SPANDREL PANEL Manufacturer: TBT Color: TBD	<b>W4</b> WINDOW Manufacturer: TBD	<b>D4</b> LOBBY / COMM ENTRANCE DOOR Manufacturer: TBD Color: Clear Glass
<b>B</b> CURTAIN WALL Manufacturer: TBD Color: Clear Glass	<b>W1</b> WINDOW Manufacturer: TBT	<b>D1</b> PATIO DOOR Manufacturer: TBD	<b>D5</b> EXIT DOOR Manufacturer: TBD Color: TBD
<b>C</b> CONCRETE Manufacturer: TBD Color: TBD	<b>W2</b> WINDOW Manufacturer: TBD	<b>D2</b> GARAGE DOOR Manufacturer: TBD 4.6m H x 6.3m W	
<b>D</b> BRICK Manufacturer: TBD Color: TBD	<b>W3</b> WINDOW Manufacturer: TBD	<b>D3</b> GARAGE DOOR Manufacturer: TBD 4.6m H x 3m W	

NOTE: Bird-safe glazing treatment provided on all exterior glazing within the first 16m above grade and adjacent to significant landscape features, in accordance with CSA A460:19 and City of Ottawa High-Rise Design Guidelines.

NOTES GÉNÉRALES General Notes

- Ces documents d'architecture sont la propriété exclusive de NEUF architecte(s) et ne peuvent être utilisés, reproduits ou copiés sans autorisation écrite préalable. / These architectural documents are the exclusive property of NEUF architecte(s) and cannot be used, copied or reproduced without written pre-authorization.
- Les dimensions apparaissant aux documents doivent être vérifiées par l'entrepreneur avant le début des travaux. / All dimensions which appear on the documents must be verified by the contractor before to start the work.
- Veuillez aviser l'architecte de toute dimension erreur et/ou divergences entre ces documents et ceux des autres professionnels. / The architect must be notified of all errors, omissions and discrepancies between these documents and those of the others professionals.
- Les dimensions sur ces documents doivent être lues et non mesurées. / The dimensions on these documents must be read and not measured.

ARPENTEUR Surveyor  
**Annis, O'Sullivan, Vollebek Ltd.**  
14 Concourse Gate, Ottawa ON K2E 7S6  
T 613 727 0850 Aovltd.com

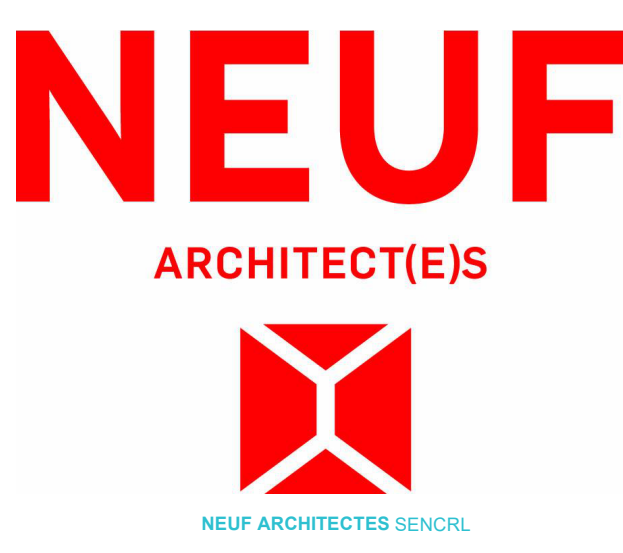
PROMOTEUR Developer  
**Vuze Construction**  
Laperrière Ave 1600, Ottawa ON K1Z 6P5  
T 619 664 4195 Vuzeconstruction.com

PLANIFICATEUR Planner  
**Fotenn Planning and Design**  
420 O'Connor Street, Ottawa ON K2P 0P4  
T 613 730 5709 Fotenn.com

ARCHITECTURE DE PAYSAGE Landscape Architect  
**Projet Paysage**  
24 Montroyal West Side St., Montreal QC H2T 2S2  
T 514 849 7700 Projetspaysage.com

CIVIL Civil  
**EXP**  
1001 Boulevard De Maisonneuve Ouest, Bureau 800, Montreal QC H3A 3G2  
T 514 931 1080 Exp.com

ARCHITECTES Architect  
**NEUF architect(e)s** SENCRL  
630, boul. René-Lévesque O. 32e étage, Montréal QC H3B 1S6  
T 514 847 1117 NEUFarchitectes.com



CLIENT Client

OUVRAGE Project  
**1015 TWEDDLE ROAD,  
ORLÉANS, ON, K4A 3P4**

EMPLACEMENT Location NO PROJET No.  
OTTAWA, ON 13383

NO	RÉVISION	DATE (aa-mm-jj)
0	SPA SUBMISSION	2025.05.30
1	SPA RESUBMISSION	2025.09.26
2	SPA RESUBMISSION	2025.11.22

DESSINÉ PAR Drawn by  
AT

VERIFIÉ PAR Checked by  
AC

DATE (aa.mm.jj) 30/05/25

ECHELLE Scale  
As indicated

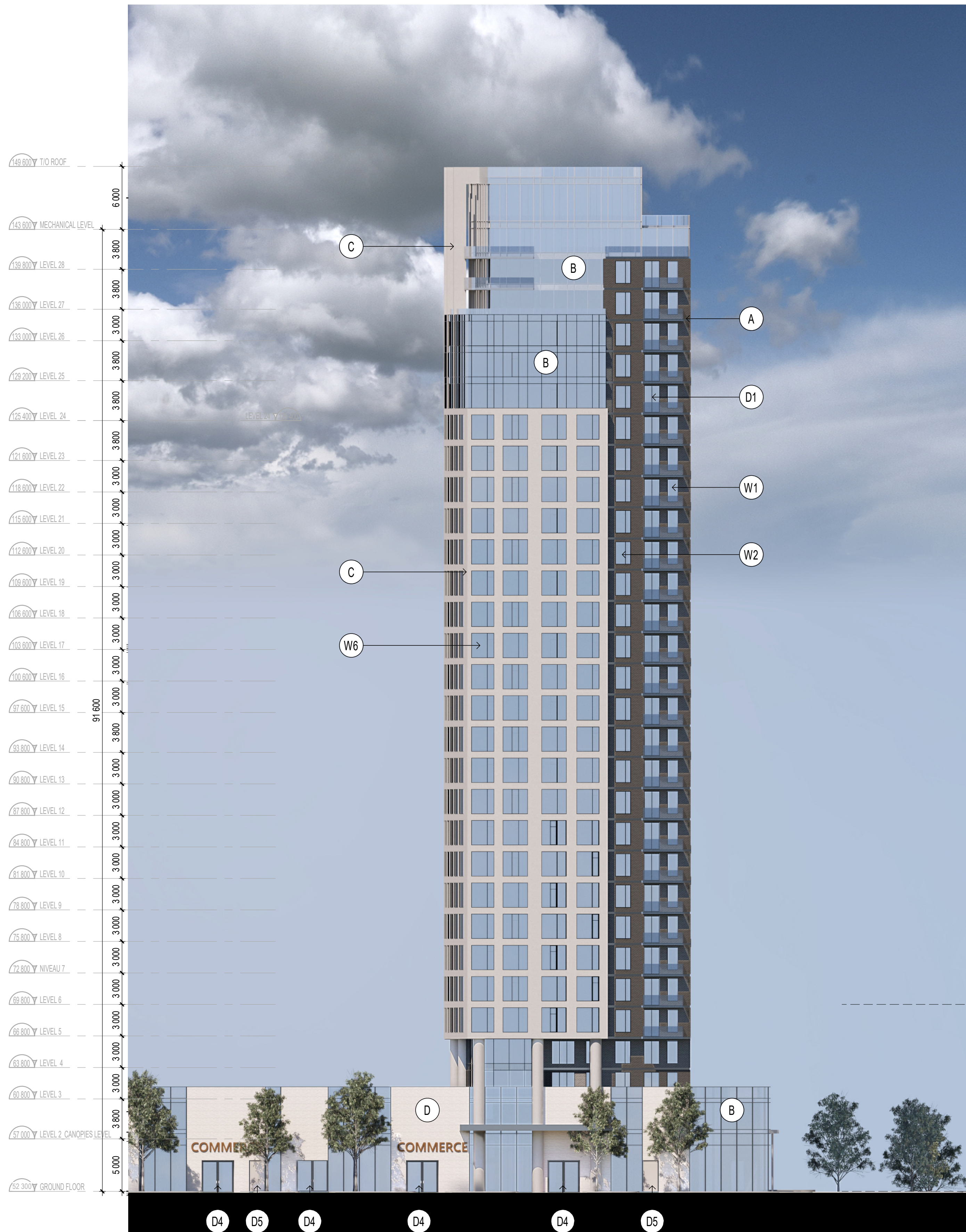
TITRE DU DESSIN Drawing Title

**ELEVATIONS - B2**

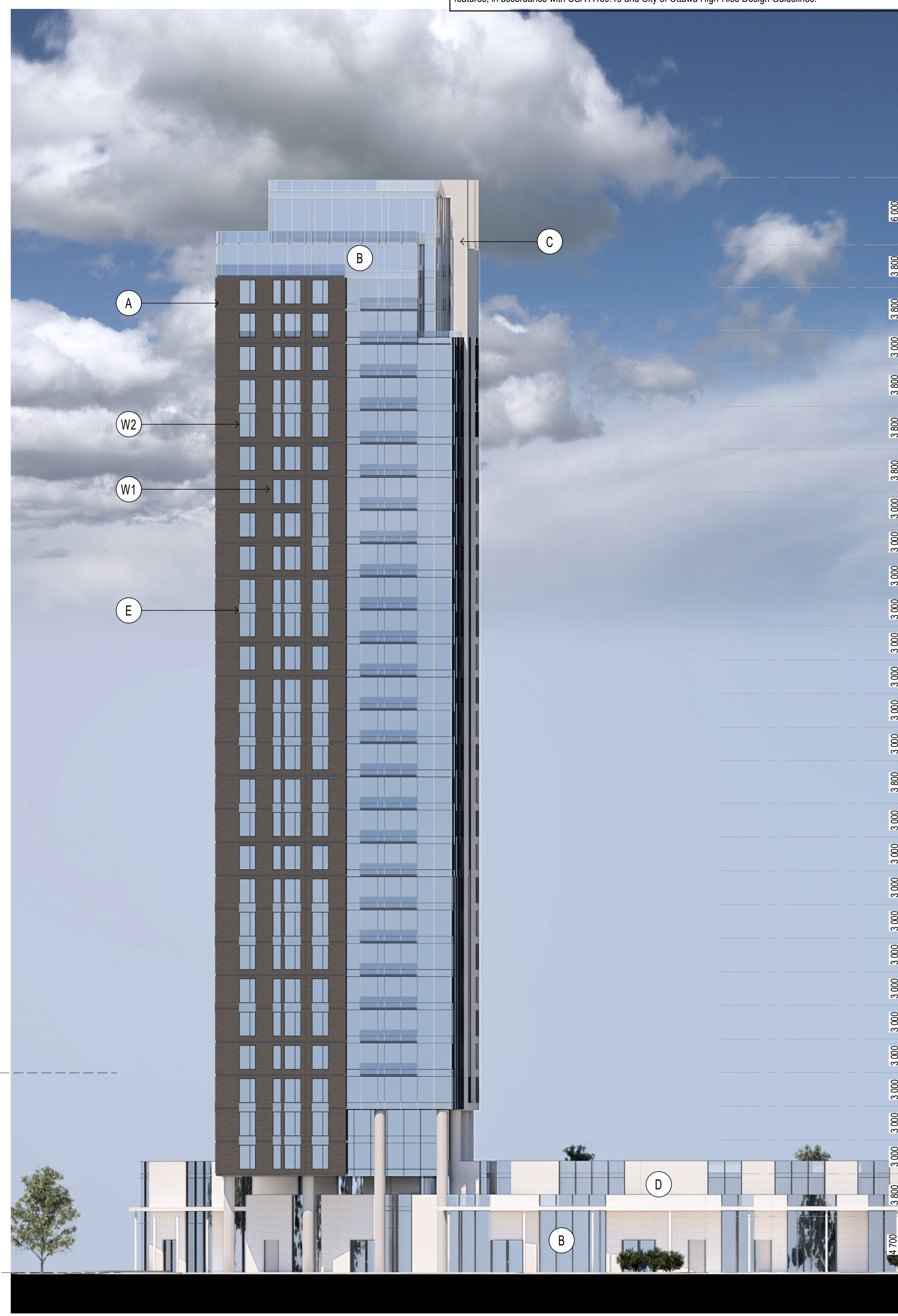
RÉVISION Revision NO. DESSIN Dwg Number  
**2** **004**

NOTES  
FILE NUMBER D02-02-25-0038 & D07-12-25-0073  
PLAN NUMBER # 19417

Autodesk Docs://13383\_1015 TWEDDLE RD\_R24/TRIM\_13383\_ARC\_PRE\_A23\_IMPLANTATION\_R24.rvt



**NORTH ELEVATION\_B3**  
1:250



**SOUTH ELEVATION\_B3**  
1:250

MATERIAL LEGEND			
<b>A</b> BRICK Manufacturer: TBT Color: TBD	<b>E</b> SPANDREL PANEL Manufacturer: TBT Color: TBD	<b>W4</b> WINDOW Manufacturer: TBD	<b>D4</b> LOBBY / COMM ENTRANCE DOOR Manufacturer: TBD Color: Clear Glass
<b>B</b> CURTAIN WALL Manufacturer: TBD Color: Clear Glass	<b>W1</b> WINDOW Manufacturer: TBT	<b>D1</b> PATIO DOOR Manufacturer: TBD	<b>D5</b> EXIT DOOR Manufacturer: TBD Color: TBD
<b>C</b> CONCRETE Manufacturer: TBD Color: TBD	<b>W2</b> WINDOW Manufacturer: TBD	<b>D2</b> GARAGE DOOR Manufacturer: TBD 4.6m H x 6.3m W	
<b>D</b> BRICK Manufacturer: TBD Color: TBD	<b>W3</b> WINDOW Manufacturer: TBD	<b>D3</b> GARAGE DOOR Manufacturer: TBD 4.6m H x 3m W	

NOTE: Bird-safe glazing treatment provided on all exterior glazing within the first 16m above grade and adjacent to significant landscape features, in accordance with CSA A460.19 and City of Ottawa High-Rise Design Guidelines.

**NOTES GÉNÉRALES / General Notes**

- Ces documents d'architecture sont la propriété exclusive de NEUF architecte et ne peuvent être utilisés, reproduits ou copiés sans autorisation écrite préalable. / These architectural documents are the exclusive property of NEUF architecte and cannot be used, copied or reproduced without written pre-authorization.
- Les dimensions apparaissant aux documents doivent être vérifiées par l'entrepreneur avant le début des travaux. / All dimensions which appear on the documents must be verified by the contractor before to start the work.
- Veuillez aviser l'architecte de toute dimension erreur et/ou divergences entre ces documents et ceux des autres professionnels. / The architect must be notified of all errors, omissions and discrepancies between these documents and those of the others professionals.
- Les dimensions sur ces documents doivent être lues et non mesurées. / The dimensions on these documents must be read and not measured.

**ARPENITEUR / Surveyor**  
**Annis, O'Sullivan, Vollebek Ltd.**  
14 Concourse Gate, Ottawa ON K2E 7S6  
T 613 727 0850 Aovltd.com

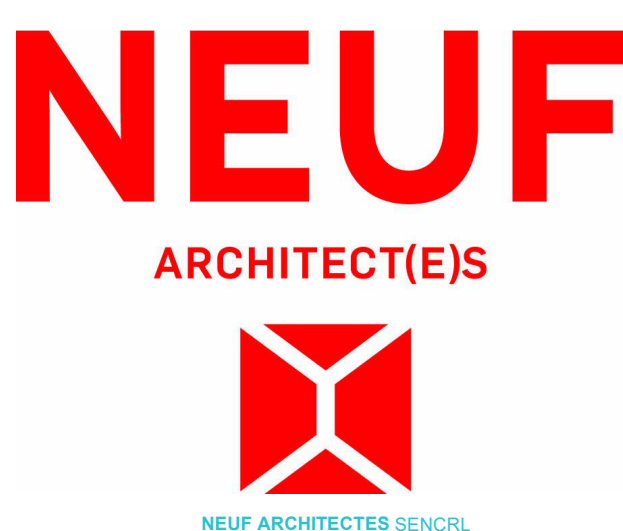
**PROMOTEUR / Developer**  
**Vuze Construction**  
Laperrière Ave 1600, Ottawa ON K1Z 6P5  
T 619 664 4195 Vuzeconstruction.com

**PLANIFICATEUR / Planner**  
**Fotenn Planning and Design**  
420 O'Connor Street, Ottawa ON K2P 0P4  
T 613 730 5709 Fotenn.com

**ARCHITECTURE DE PAYSAGE / Landscape Architect**  
**Projet Paysage**  
25 Montroyal West Side Sq, Montreal QC H2T 2S2  
T 514 849 7700 Projetspaysage.com

**CIVIL / Civil**  
**EXP**  
1001 Boulevard De Maisonneuve Ouest, Bureau 800, Montreal QC H3A 3G2  
T 514 931 1080 Exp.com

**ARCHITECTES / Architect**  
**NEUF architect(e)s** SENCRL  
630, St-Jacques, Montréal, Québec H3B 1S6  
T 514 847 1117 NEUFarchitectes.com



**CLIENT / Client**

**OUVRAGE / Project**  
**1015 TWEDDLE ROAD,  
ORLÉANS, ON, K4A 3P4**

**EMPLACEMENT / Location**  
OTTAWA, ON

**NO PROJET / No.**  
13383

NO	RÉVISION	DATE (aa-mm-jj)
0	SPA SUBMISSION	2025.05.30
1	SPA RESUBMISSION	2025.09.26
2	SPA RESUBMISSION	2025.11.22

**DESSIN PAR / Drawn by**  
AT

**VERIFIÉ PAR / Checked by**  
AC

**DATE (aa-mm-jj)**  
30/05/25

**ECHELLE / Scale**  
As indicated

**ELEVATIONS - B3**

Autodesk Docs://13383\_1015 TWEDDLE RD\_R24/TRIM\_13383\_ARC\_PRE\_A23\_IMPLANTATION\_R24.rvt



EAST ELEVATION\_B3

1:250

2/006



WEST ELEVATION\_B3

1:250

1/006

MATERIAL LEGEND			
<b>A</b> BRICK Manufacturer: TBT Color: TBD	<b>E</b> SPANDREL PANEL Manufacturer: TBT Color: TBD	<b>W4</b> WINDOW Manufacturer: TBD	<b>D4</b> LOBBY / COMM ENTRANCE DOOR Manufacturer: TBD Color: Clear Glass
<b>B</b> CURTAIN WALL Manufacturer: TBD Color: Clear Glass	<b>W1</b> WINDOW Manufacturer: TBT	<b>D1</b> PATIO DOOR Manufacturer: TBD	<b>D5</b> EXIT DOOR Manufacturer: TBD Color: TBD
<b>C</b> CONCRETE Manufacturer: TBD Color: TBD	<b>W2</b> WINDOW Manufacturer: TBD	<b>D2</b> GARAGE DOOR Manufacturer: TBD 4.6m H x 6.3m W	
<b>D</b> BRICK Manufacturer: TBD Color: TBD	<b>W3</b> WINDOW Manufacturer: TBD	<b>D3</b> GARAGE DOOR Manufacturer: TBD 4.6m H x 3m W	

NOTE: Bird-safe glazing treatment provided on all exterior glazing within the first 16m above grade and adjacent to significant landscape features, in accordance with CSA A460:19 and City of Ottawa High-Rise Design Guidelines.

NOTES	
FILE NUMBER	D02-02-25-0038 & D07-12-25-0073
PLAN NUMBER	# 19417

NOTES GÉNÉRALES General Notes

- Ces documents d'architecture sont la propriété exclusive de NEUF architect(e)s et ne peuvent être utilisés, reproduits ou copiés sans autorisation écrite préalable. / These architectural documents are the exclusive property of NEUF architect(e)s and cannot be used, copied or reproduced without written pre-authorization.
- Les dimensions apparaissant aux documents doivent être vérifiées par l'entrepreneur avant le début des travaux. / All dimensions which appear on the documents must be verified by the contractor before to start the work.
- Veuillez aviser l'architecte de toute dimension erreur et/ou divergences entre ces documents et ceux des autres professionnels. / The architect must be notified of all errors, omissions and discrepancies between these documents and those of the others professionals.
- Les dimensions sur ces documents doivent être lues et non mesurées. / The dimensions on these documents must be read and not measured.

ARPEUTEUR Surveyor  
**Annis, O'Sullivan, Vollebakk Ltd.**  
 14 Concourse Gate, Ottawa ON K2E 7S6  
 T 613 727 0850 Aovltd.com

PROMOTEUR Developer  
**Vuze Construction**  
 Lapierre Ave 1600, Ottawa ON K1Z 8P5  
 T 619 664 4195 Vuzeconstruction.com

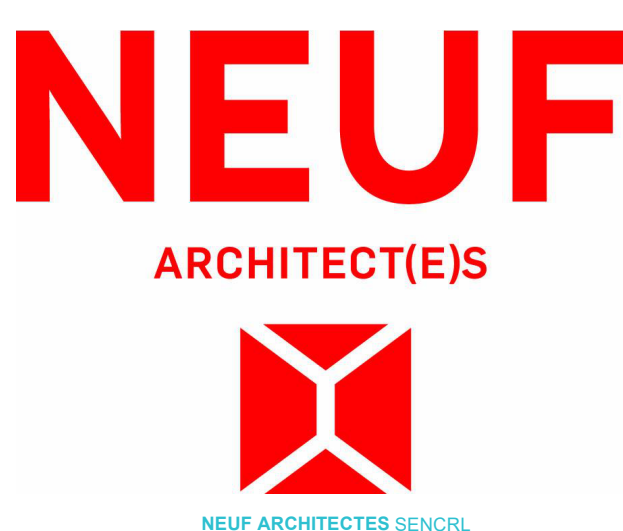
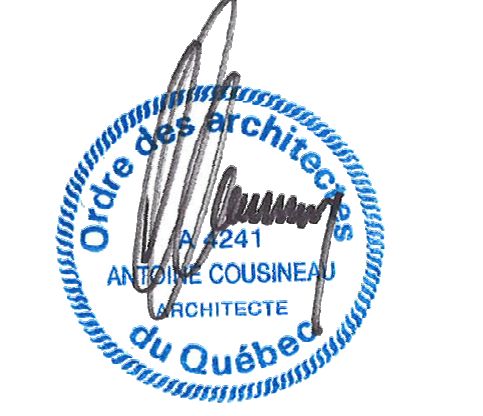
PLANIFICATEUR Planner  
**Fotenn Planning and Design**  
 420 O'Connor Street, Ottawa ON K2P 0P4  
 T 613 730 5709 Fotenn.com

ARCHITECTURE DE PAYSAGE Landscape Architect  
**Projet Paysage**  
 24 Metcalf West Side St., Montreal QC H2T 2S2  
 T 514 849 7700 Projetspaysage.com

CIVIL Civil  
**EXP**  
 1001 Boulevard De Maisonneuve Ouest, Bureau 800, Montreal QC H3A 3C2  
 T 514 931 1080 Exp.com

ARCHITECTES Architect  
**NEUF architect(e)s** SENCRL  
 630, St-Jacques, Rens-Lévesque C. 32e étage, Montreal QC H3B 1S6  
 T 514 847 1117 NEUFarchitectes.com

SCEAU / Seal



CLIENT Client

OUVRAGE Project  
**1015 TWEDDLE ROAD,  
 ORLÉANS, ON, K4A 3P4**

EMPLACEMENT Location NO PROJET No.  
 OTTAWA, ON 13383

NO	RÉVISION	DATE (aa-mm-jj)
0	SPA SUBMISSION	2025.05.30
1	SPA SUBMISSION	2025.09.26
2	SPA SUBMISSION	2025.11.22

DESSINÉ PAR Drawn by  
 AT

VERIFIÉ PAR Checked by  
 AC

DATE (aa.mm.jj) 30/05/25

ECHELLE Scale  
 As indicated

TITRE DU DESSIN Drawing Title

**ELEVATIONS - B3**

RÉVISION Revision NO. DESSIN Dwg Number  
**2 006**

MATERIAL LEGEND			
<b>A</b> BRICK Manufacturer: TBT Color: TBD	<b>E</b> SPANDREL PANEL Manufacturer: TBT Color: TBD	<b>W4</b> WINDOW Manufacturer: TBD	<b>D4</b> LOBBY / COMM ENTRANCE DOOR Manufacturer: TBD Color: Clear Glass
<b>B</b> CURTAIN WALL Manufacturer: TBD Color: Clear Glass	<b>W1</b> WINDOW Manufacturer: TBT	<b>D1</b> PATIO DOOR Manufacturer: TBD	<b>D5</b> EXIT DOOR Manufacturer: TBD Color: TBD
<b>C</b> CONCRETE Manufacturer: TBD Color: TBD	<b>W2</b> WINDOW Manufacturer: TBD	<b>D2</b> GARAGE DOOR Manufacturer: TBD 4.6 m H x 6.3 m W	
<b>D</b> BRICK Manufacturer: TBD Color: TBD	<b>W3</b> WINDOW Manufacturer: TBD	<b>D3</b> GARAGE DOOR Manufacturer: TBD 4.6 m H x 3 m W	

NOTE: Bird-safe glazing treatment provided on all exterior glazing within the first 16m above grade and adjacent to significant landscape features, in accordance with CSA A460.19 and City of Ottawa High-Rise Design Guidelines.

**NOTES GÉNÉRALES / General Notes**

- Ces documents d'architecture sont la propriété exclusive de NEUF architect(e)s et ne peuvent être utilisés, reproduits ou copiés sans autorisation écrite préalable. / These architectural documents are the exclusive property of NEUF architect(e)s and cannot be used, copied or reproduced without written pre-authorization.
- Les dimensions apparaissant aux documents doivent être vérifiées par l'entrepreneur avant le début des travaux. / All dimensions which appear on the documents must be verified by the contractor before to start the work.
- Veuillez aviser l'architecte de toute dimension erreur et/ou divergences entre ces documents et ceux des autres professionnels. / The architect must be notified of all errors, omissions and discrepancies between these documents and those of the others professionals.
- Les dimensions sur ces documents doivent être lues et non mesurées. / The dimensions on these documents must be read and not measured.

**ARPENTEUR / Surveyor**  
**Annis, O'Sullivan, Vollebek Ltd.**  
 14 Concourse Gate, Ottawa ON K2E 7S6  
 T 613 727 0850 Aovildt.com

**PROMOTEUR / Developer**  
**Vuze Construction**  
 Laperrière Ave 1600, Ottawa ON K1Z 8P5  
 T 619 664 4195 Vuzeconstruction.com

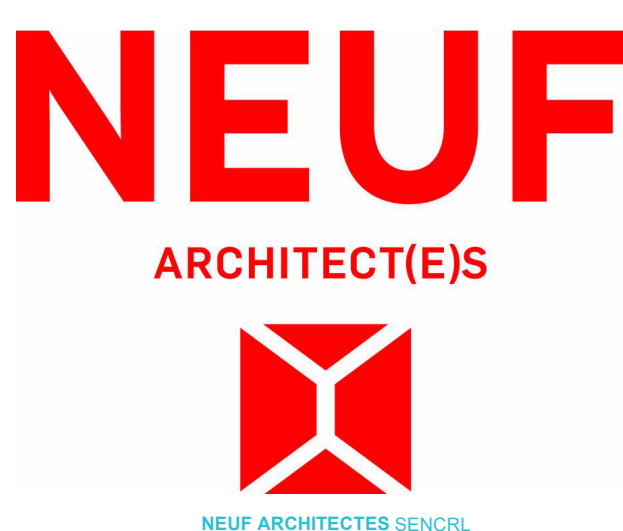
**PLANIFICATEUR / Planner**  
**Fotenn Planning and Design**  
 420 O'Connor Street, Ottawa ON K2P 0P4  
 T 613 730 5709 Fotenn.com

**ARCHITECTURE DE PAYSAGE / Landscape Architect**  
**Projet Paysage**  
 24 Montroyal West Suite 204, Montreal QC H2T 2S2  
 T 514 849 7700 Projetspaysage.com

**CIVIL / Civil**  
**EXP**  
 1001 Boulevard De Maisonneuve Ouest, Bureau 800, Montreal QC H3A 3C9  
 T 514 931 1080 Exp.com

**ARCHITECTES / Architect**  
**NEUF architect(e)s** SENCRL  
 630, boul. René-Lévesque O, 32e étage, Montreal QC H3B 1S6  
 T 514 847 1117 NEUFArchitectes.com

**SCEAU / Seal**



**CLIENT / Client**

**OUVRAGE / Project**  
**1015 TWEDDLE ROAD, ORLÉANS, ON, K4A 3P4**

EMPLACEMENT Location NO PROJET No.  
 OTTAWA, ON 13383

NO	RÉVISION	DATE (aa-mm-jj)
0	SPA SUBMISSION	2025.05.30
1	SPA SUBMISSION	2025.09.26
2	SPA SUBMISSION	2025.11.22

DESSINÉ PAR Drawn by  
 AT

VERIFIÉ PAR Checked by  
 AC

DATE (aa.mm.jj) 30/05/25  
 ECHELLE Scale As indicated

**ELEVATIONS - B4**

RÉVISION Revision NO. DESSIN Dwg Number  
**2 007**



**EAST ELEVATION\_B4** 1:250 2  
007



**WEST ELEVATION\_B4** 1:250 1  
007

**NOTES**  
 FILE NUMBER D02-02-25-0038 & D07-12-25-0073  
 PLAN NUMBER # 19417

**BIRD SAFE TREATMENTS (APPLICABLE TO ALL ELEVATIONS):**

**a) Reduced Reflectivity at Grade**

Highly reflective glass is avoided within the first 16 metres above grade, where the majority of bird collisions occur.

Spandrel panels, fritted glazing, and opaque materials are prioritized at podium levels.

**b) Landscape Placement Coordination**

Trees and dense plantings are coordinated with façade treatments to avoid creating the illusion of reflected habitat.

Where vegetation is located directly adjacent to glazing, bird-safe glass treatment is specified.

No clear glass corners are located directly adjacent to major tree clusters.

**c) Avoidance of Through-Building Views**

Ground-floor amenity areas and lobbies are designed to prevent direct "see-through" conditions.

Where transparency is required, glazing includes bird-safe markers.

**Podium-Level Bird-Safe Glazing**

Since collisions are most frequent within the lower 16 m:

Glazing incorporates visible markers using frit, ceramic patterns, acid-etched, or UV-patterned glass.

Pattern density follows the 2x4 rule (maximum 50mm x 100mm spacing).

Spandrel and solid panels are increased along heavily landscaped frontages.

Glass at corners is treated to eliminate transparent edge conditions.

Guardrails use fritted or opaque laminated glass rather than clear glazing.

**MATERIAL LEGEND**

<b>A</b> BRICK Manufacturer: TBT Color: TBD	<b>E</b> SPANDREL PANEL Manufacturer: TBT Color: TBD	<b>W4</b> WINDOW Manufacturer: TBD	<b>D4</b> LOBBY / COMM ENTRANCE DOOR Manufacturer: TBD Color: Clear Glass
<b>B</b> CURTAIN WALL Manufacturer: TBD Color: Clear Glass	<b>W1</b> WINDOW Manufacturer: TBT	<b>D1</b> PATIO DOOR Manufacturer: TBD	<b>D5</b> EXIT DOOR Manufacturer: TBD Color: TBD
<b>C</b> CONCRETE Manufacturer: TBD Color: TBD	<b>W2</b> WINDOW Manufacturer: TBD	<b>D2</b> GARAGE DOOR Manufacturer: TBD 4.6m H x 6.3m W	
<b>D</b> BRICK Manufacturer: TBD Color: TBD	<b>W3</b> WINDOW Manufacturer: TBD	<b>D3</b> GARAGE DOOR Manufacturer: TBD 4.6m H x 3m W	

NOTE: Bird-safe glazing treatment provided on all exterior glazing within the first 16m above grade and adjacent to significant landscape features, in accordance with CSA A460.19 and City of Ottawa High-Rise Design Guidelines.



NORTH ELEVATION\_B4

1: 250

2 / 008



SOUTH ELEVATION\_B4

1: 250

1 / 008

**NOTES**

FILE NUMBER D02-02-25-0038 & D07-12-25-0073  
PLAN NUMBER # 19417

**NOTES GÉNÉRALES / General Notes**

- Ces documents d'architecture sont la propriété exclusive de NEUF architecte et ne peuvent être utilisés, reproduits ou copiés sans autorisation écrite préalable. / These architectural documents are the exclusive property of NEUF architecte and cannot be used, copied or reproduced without written pre-authorization.
- Les dimensions apparaissant aux documents doivent être vérifiées par l'entrepreneur avant le début des travaux. / All dimensions which appear on the documents must be verified by the contractor before to start the work.
- Veuillez aviser l'architecte de toute dimension eneur et/ou divergences entre ces documents et ceux des autres professionnels. / The architect must be notified of all errors, omissions and discrepancies between these documents and those of the others professionals.
- Les dimensions sur ces documents doivent être lues et non mesurées. / The dimensions on these documents must be read and not measured.

ARPEUTEUR / Surveyor  
**Annis, O'Sullivan, Vollebakk Ltd.**  
14 Concourse Gate, Ottawa ON K2E 7S6  
T 613 727 0850 Aovild.com

PROMOTEUR / Developer  
**Vuze Construction**  
Laperrière Ave 1600, Ottawa ON K1Z 6P5  
T 619 664 4195 Vuzeconstruction.com

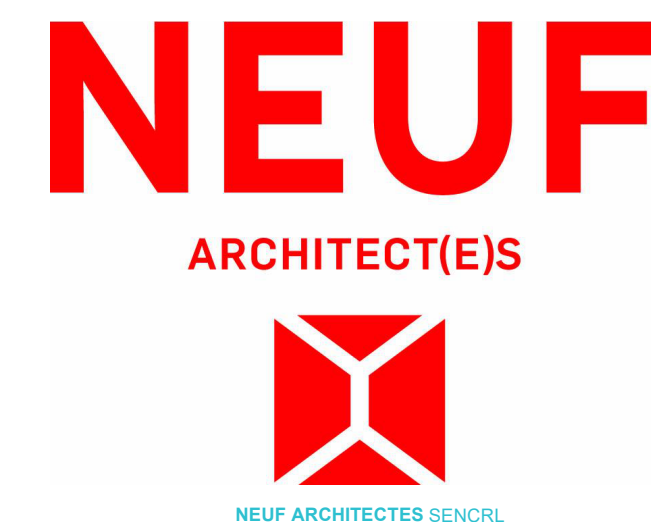
PLANIFICATEUR / Planner  
**Fotenn Planning and Design**  
420 O'Connor Street, Ottawa ON K2P 0P4  
T 613 730 5709 Fotenn.com

ARCHITECTURE DE PAYSAGE / Landscape Architect  
**Projet Paysage**  
24 Montroyal West Suite 201, Montreal QC H2T 2S2  
T 514 849 7700 Projetspaysage.com

CIVIL / Civil  
**EXP**  
1001 Boulevard De Maisonneuve Ouest, Bureau 800, Montreal QC H3A 3C8  
T 514 931 1080 Exp.com

ARCHITECTES / Architect  
**NEUF architect(e)s** SENCLR  
630, boul. René-Lévesque O, 32e étage, Montreal QC H3B 1S6  
T 514 847 1117 NEUFarchitectes.com

SCEAU / Seal



CLIENT / Client

OUVRAGE / Project  
**1015 TWEDDLE ROAD,  
ORLÉANS, ON, K4A 3P4**

EMPLACEMENT / Location  
**OTTAWA, ON**

NO	RÉVISION	DATE (aa-mm-jj)
0	SPA SUBMISSION	2025.05.30
1	SPA RESUBMISSION	2025.09.26
2	SPA RESUBMISSION	2025.11.22

DESSINÉ PAR / Drawn by  
**AT**

VERIFIÉ PAR / Checked by  
**AC**

DATE (aa.mm.jj)  
**30/05/25**

ECHELLE / Scale  
**As indicated**

**ELEVATIONS - B4**

RÉVISION / Revision  
**2**

NO. DESSIN / Dwg Number  
**008**