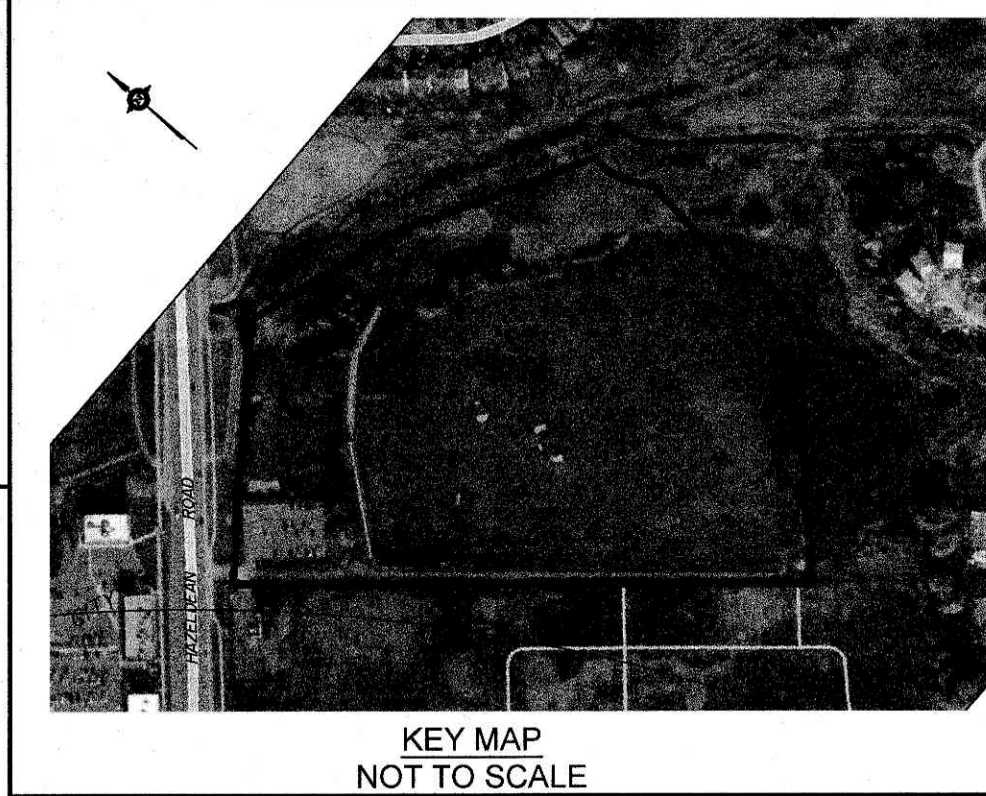


AREA SCHEDULE			
PROPOSED USE	LOT \ BLOCK	AREA (Ha)	AREA (Ac)
SINGLE UNITS	1-80	2.354	5.81
TOWNHOMES	65-75	1.166	2.88
AMENITY AREA	78	0.204	0.50
HIGH DENSITY	61	1.365	3.37
PUMP STATION	63	0.016	0.04
OPEN AREA	62	2.697	6.66
PATHWAY	64, 76	0.055	0.14
PRIVATE ROAD	77	0.887	2.19
TOTAL		8.744	21.80

SUBJECT TO THE CONDITIONS, IF ANY, SET FORTH IN OUR LETTER DATED _____

THIS DRAFT PLAN IS APPROVED BY THE CITY OF OTTAWA UNDER SECTION 51 OF THE PLANNING ACT.
THIS _____ DAY OF _____ 20____

KERSTEN NITSCHKE, MCIIP, RPP, ACTING MANAGER
DEVELOPMENT REVIEW/WEST
PLANNING, DEVELOPMENT AND BUILDING SERVICES
DEPARTMENT, CITY OF OTTAWA



DRAFT PLAN OF SUBDIVISION OF
PART OF LOT 29
CONCESSION 11
Geographic Township of Goulbourn
and
BLOCKS 35 AND 59
REGISTERED PLAN 4M-1723
CITY OF OTTAWA
Prepared by Annis, O'Sullivan, Vollebakk Ltd.

Scale 1: 750

Metric
DISTANCES SHOWN ON THIS PLAN ARE IN METRES AND
CAN BE CONVERTED TO FEET BY DIVIDING BY 0.3048

SURVEYOR'S CERTIFICATE

I CERTIFY THAT:
The boundaries of the lands to be subdivided and their relationship to
adjoining lands have been accurately and correctly shown.

Jan. 13, 2026
Date
Mirel Aradau
ONTARIO LAND SURVEYOR

OWNER'S CERTIFICATE

This is to certify that I am the owner / agent of the lands to be subdivided and that
this plan was prepared in accordance with my instructions.

January 15, 2026
Date
Double Deck Regional Inc.
I have authority to bind the corporation

ADDITIONAL INFORMATION REQUIRED UNDER SECTION 51-17 OF THE PLANNING ACT

- see plan
- see plan
- see plan
- single family, multi-family residential housing, park land
- see plan
- see plan
- see plan
- City of Ottawa
- see soils report
- see plan
- sanitary, storm sewers, municipal water, bell, hydro, cable and gas to be available
- see plan

NOTES

Bearings are grid and are referred to the Central Meridian
of MTM Zone 9 (76°30' West Longitude) NAD-83 (original).

ELEVATION NOTES

1. Elevations shown are geodetic and are referred to the CGVD28 geodetic datum.